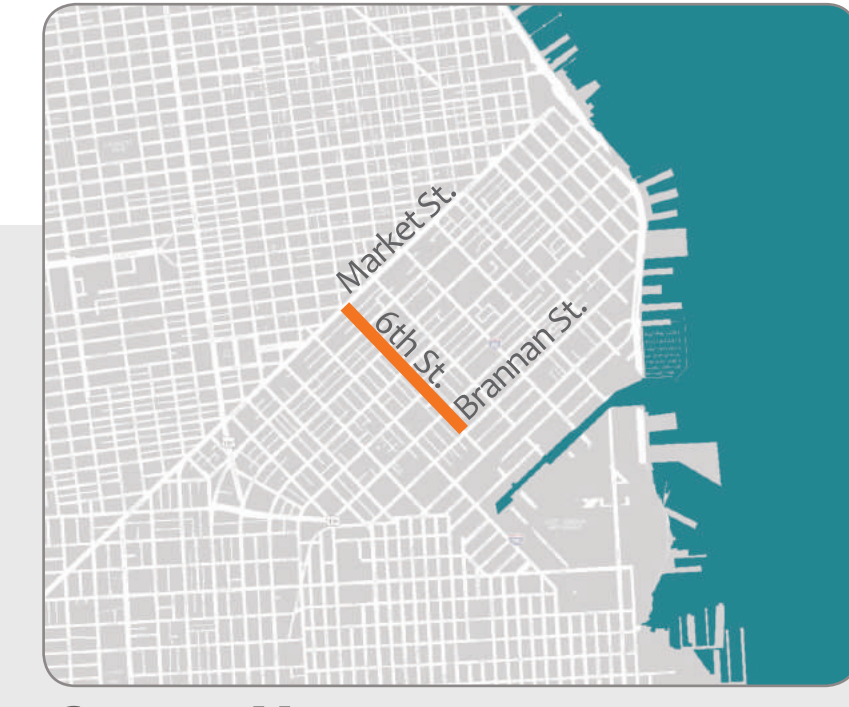
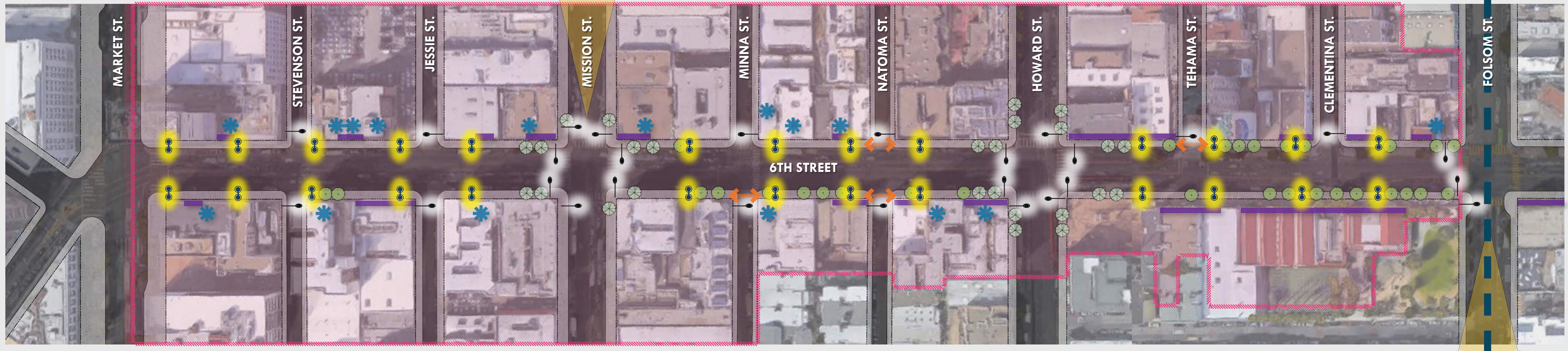


Site Analysis | INVENTORY

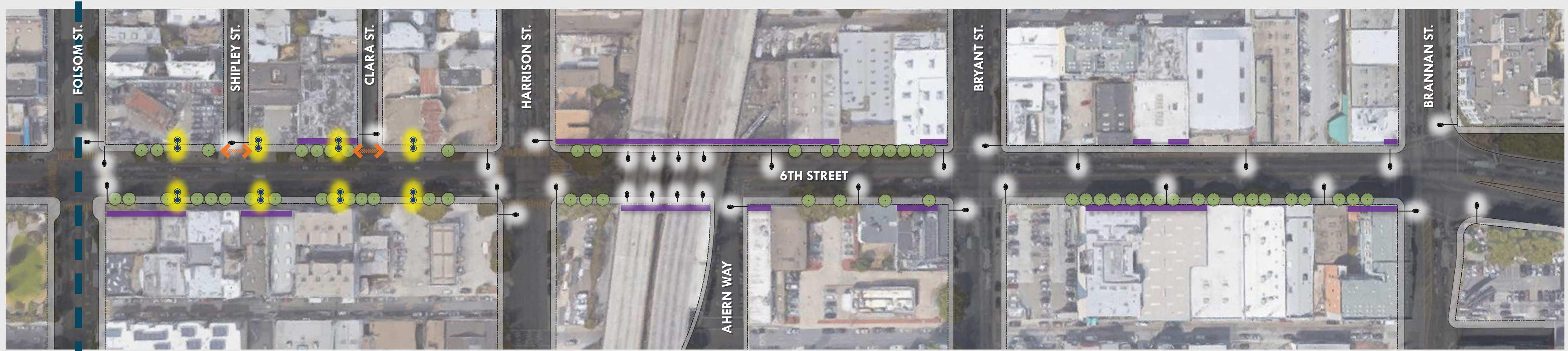
EXISTING CONDITIONS



“ZONE 1”



“ZONE 2”



LEGEND

- Central Market Community Benefit District
- Teardrop Street Lighting
- Raised or Special Paving at Alleyway Crosswalks
- Street Tree
- Overhead Street Light
- Properties with Known or Possible Subsidiwalk Basements
- Street Tree- Palm
- Solid or Blank Facades/Property Frontage

SCALE: 1"=80'-0"

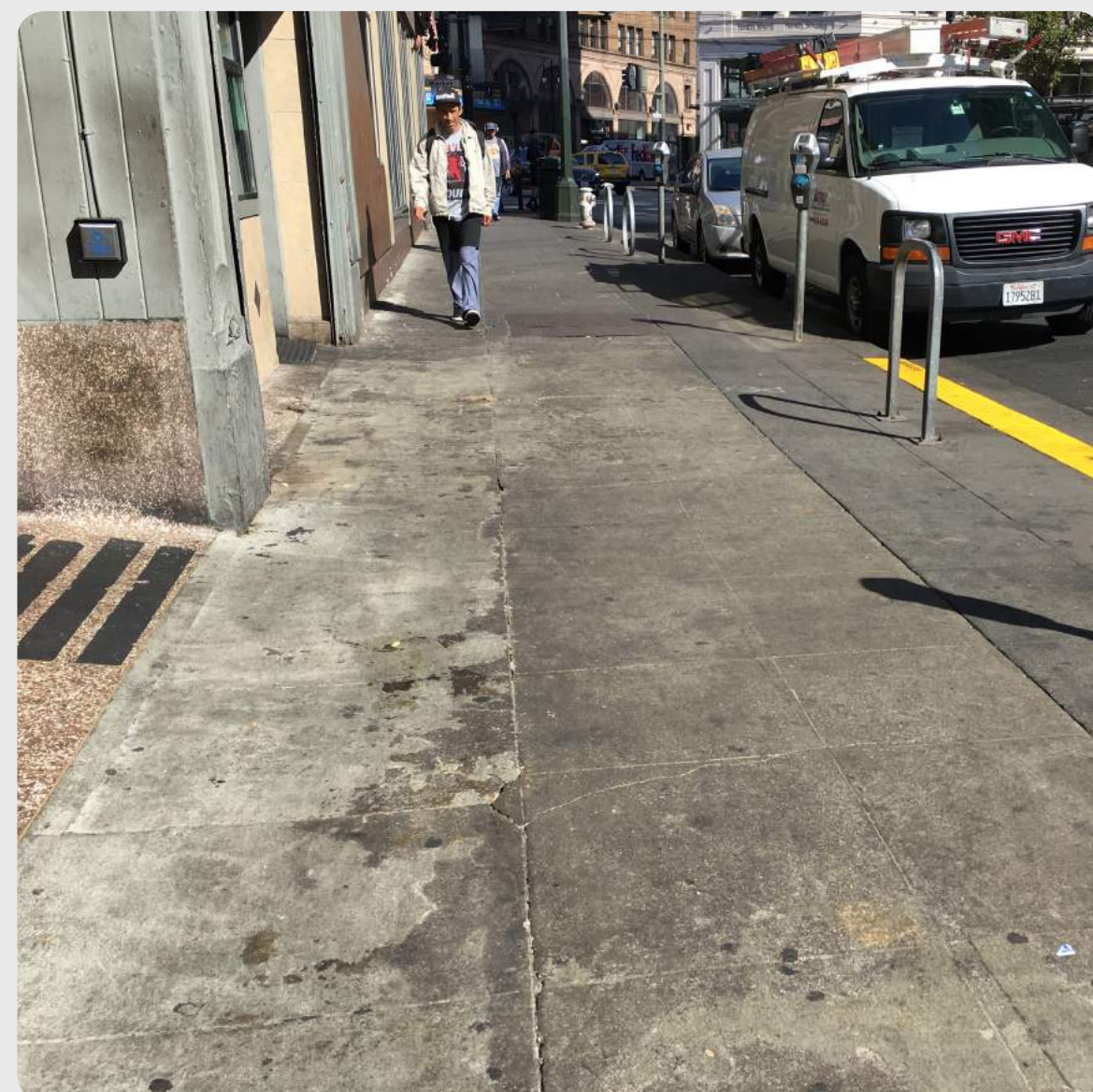
EXISTING CONDITIONS & STREET CHARACTER



Holophane Memphis Teardrop Street Lighting to Remain



Narrow Sidewalks
 • 10' typical width 5' clear at pinch-points



Existing Sidewalk Condition
 • Sub-sidewalk Basements (typ. Market to Howard)



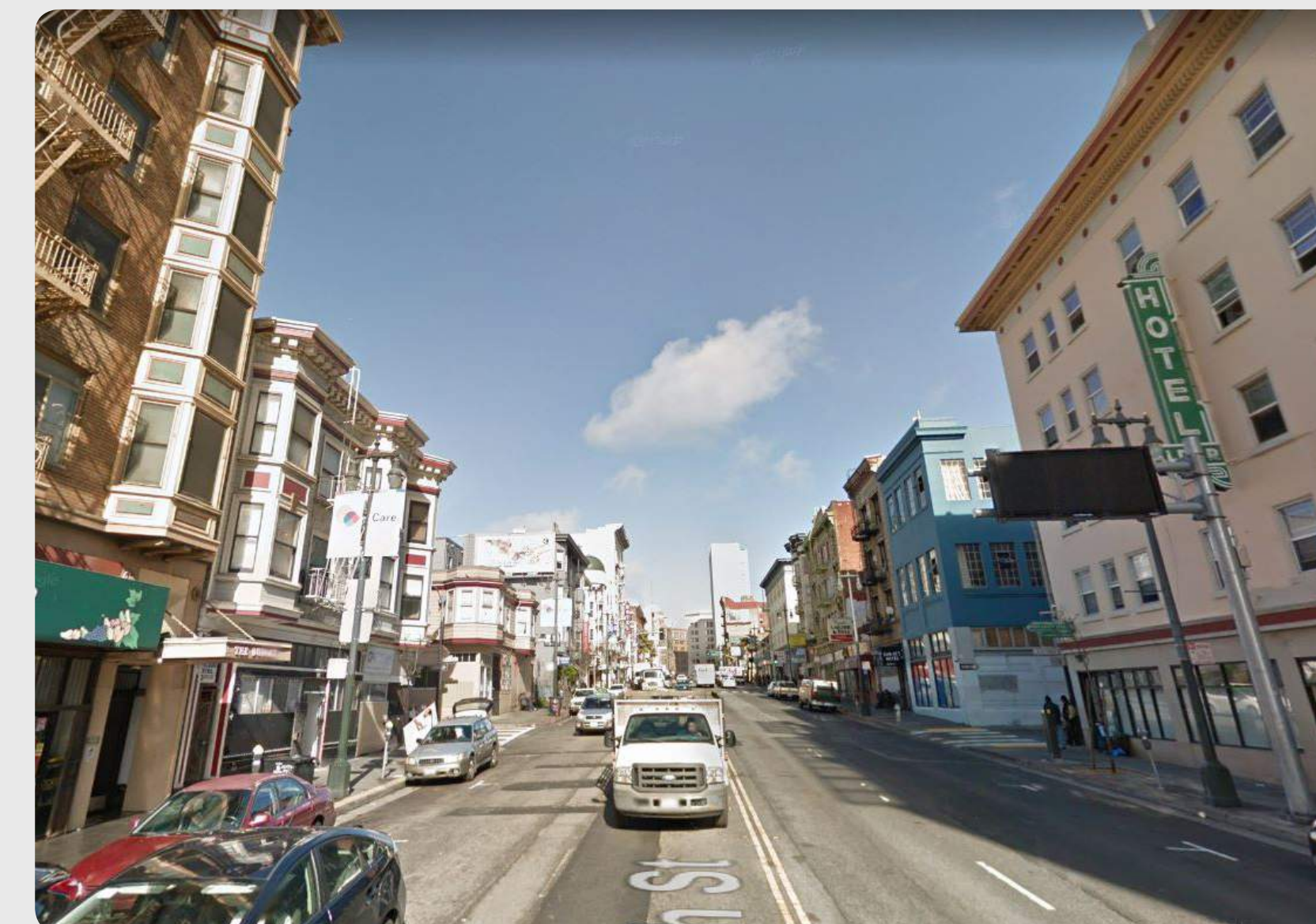
Vehicular-scaled Infrastructure



Historic Character



Vacant Tree Pits



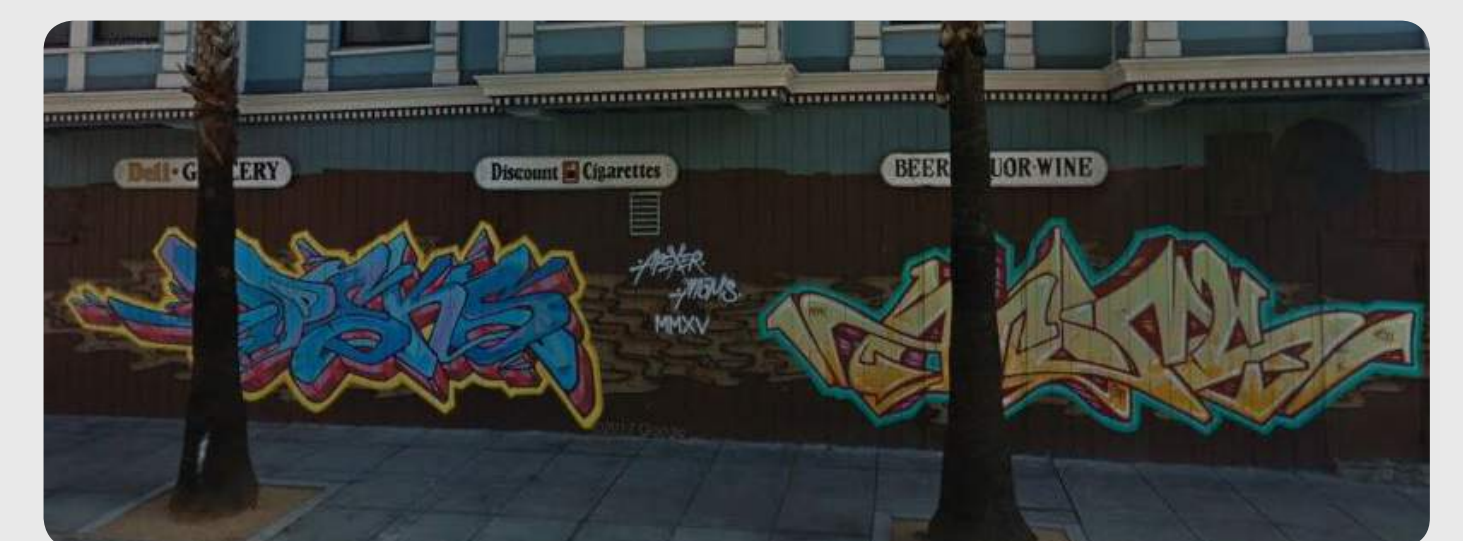
Lack of Street Trees



Identity & Arts



Cultural Groups/ Programs



Graffiti Attracting Facades

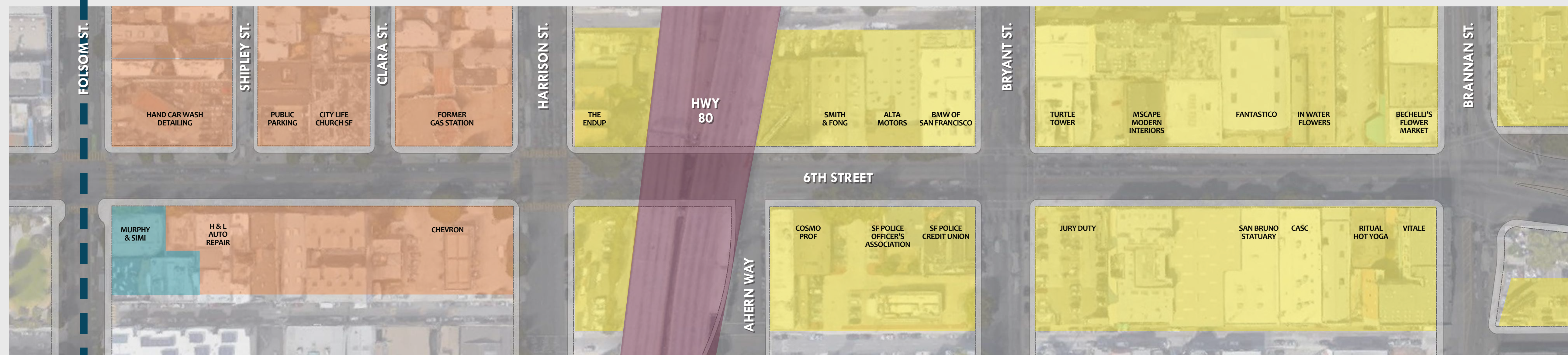


EXISTING CONDITIONS

“ZONE 1”



“ZONE 2”



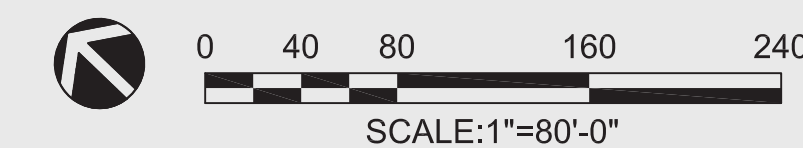
LEGEND/
LAND USE

- Retail (Commercial, Industry, Service)
- Neighborhood Commercial Districts
- Residential

- Mixed Use
- Public / Institutional
- Caltrans Right-of-Way

Annual “Two Blocks of Art” Programming

Source: http://default.sfplanning.org/zoning/zoning_map.pdf



COMMENTS

“Is there anything you’d like to share with us about 6th Street?”

POLICY OVERVIEW

TRANSIT FIRST POLICY

-SF CITY CHARTER SECTION 8A.115

“Decisions regarding the use of limited public street and sidewalk space shall encourage the use of public rights of way by pedestrians, bicyclists, and public transit.”

COMPLETE STREETS POLICY

-PUBLIC WORKS CODE 2.4.13

“..a project involving the planning, construction, reconstruction, or repaving of a public right-of-way, such project shall include...transit, pedestrian, and bicycle improvements”

BETTER STREETS POLICY

-SF ADMIN CODE SECTION 98

“..all City Departments shall coordinate their various determinations regarding the planning, design, and use of public rights-of-way...”

REFERENCE PROJECTS:

Similar Streetscape Projects Completed Recently in SF:



Cesar Chavez

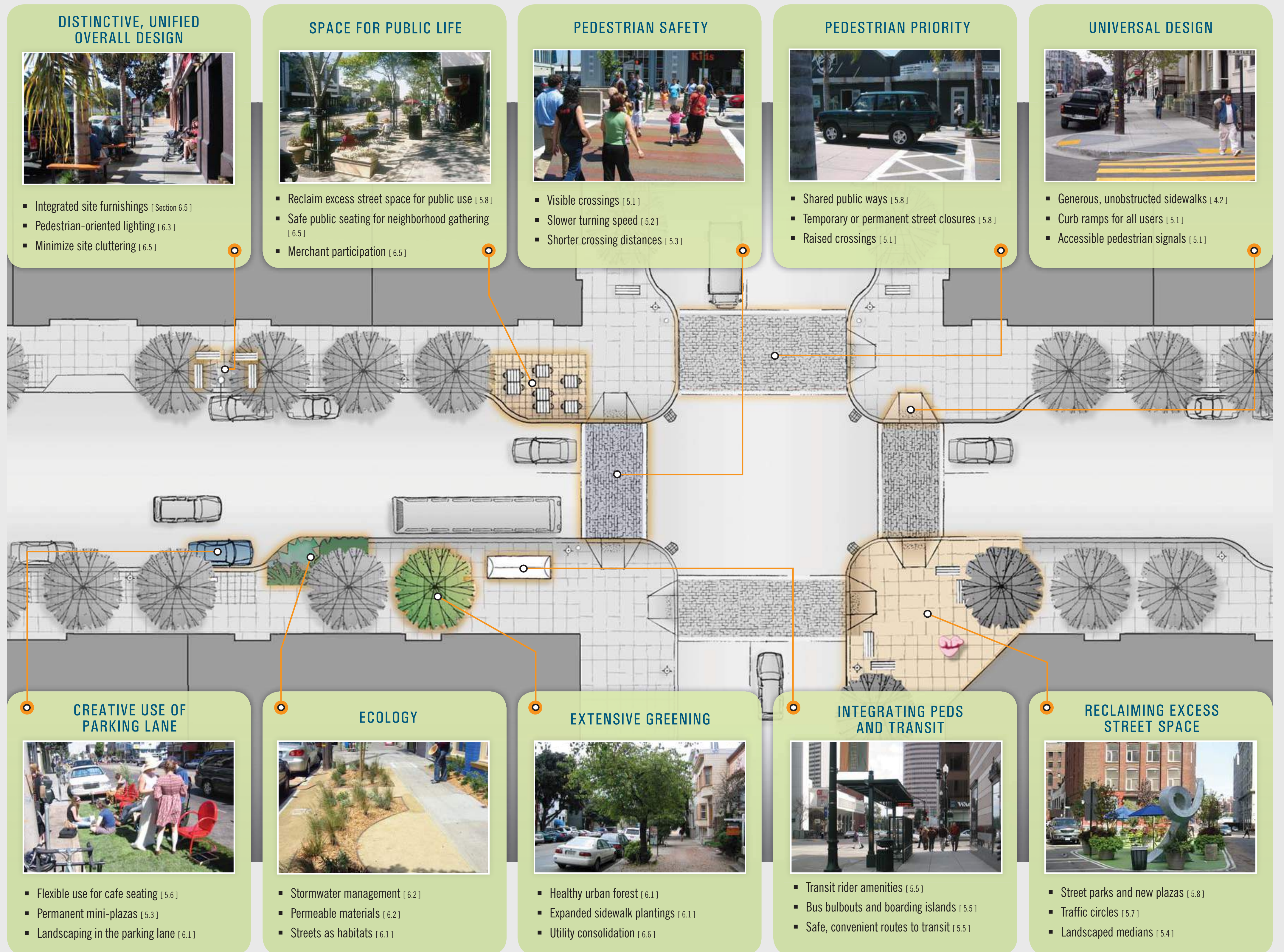
- Castro Street (Market to 19th)
- Valencia Street (15th to 19th)
- Cesar Chavez Street (Guerrero to Hampshire)
- Broadway Street (Columbus to Battery)
- Jefferson Street (Hyde to Jones)
- Taraval Street (46th to Great Highway)
- Irving Street (19th to 27th)



Taraval



Jefferson



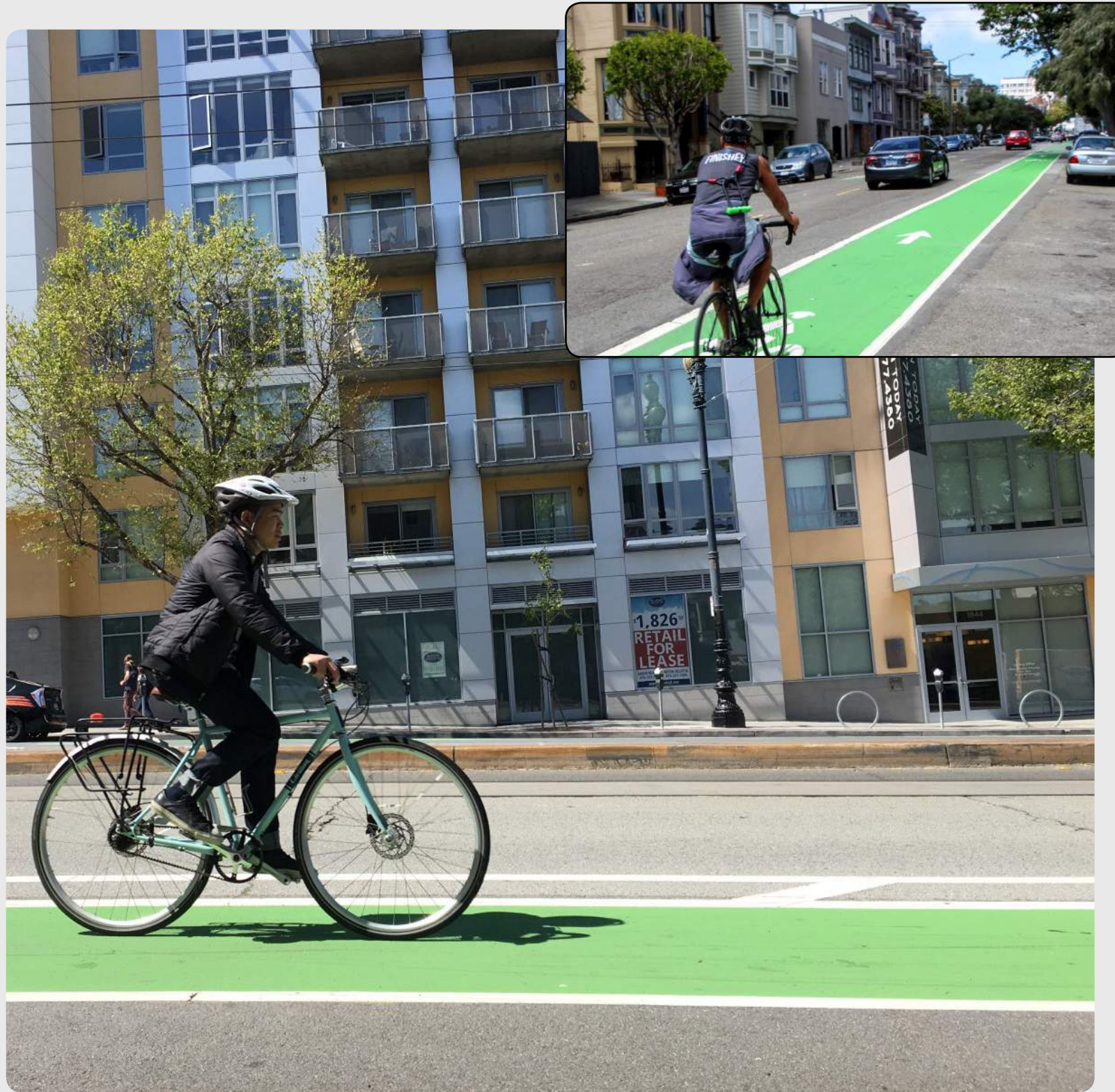
Source: SF Better Streets Plan

1 Streetscape Opportunities

CORRIDOR-WIDE IMPROVEMENTS

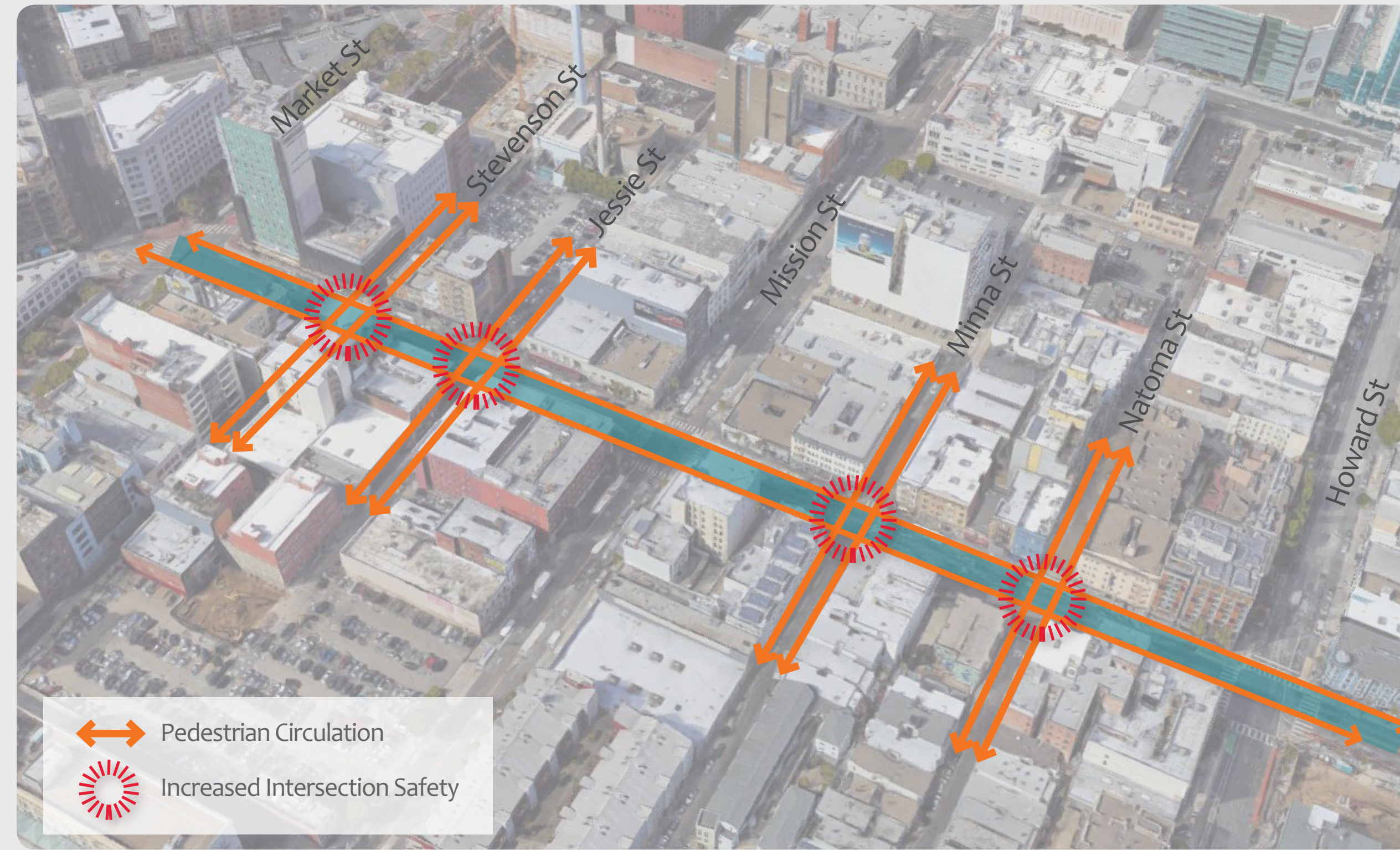
SFMTA.COM/6THSTREET

BICYCLE INFRASTRUCTURE



Dedicated Bike Lanes

ALLEYWAY CONNECTIONS



New Signalized Mid-Block Crossings
Increased Pedestrian Circulation & Safety



Highlight Alleyways



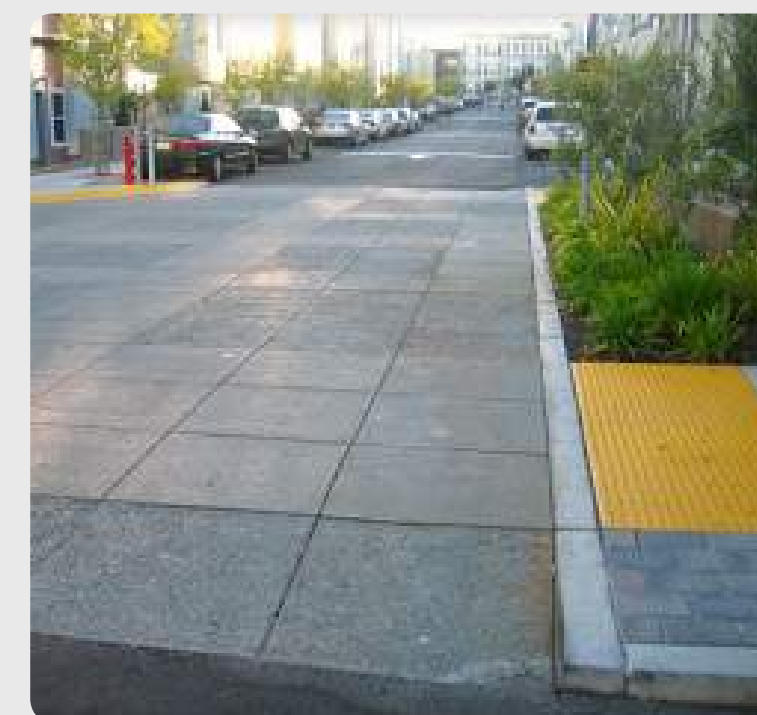
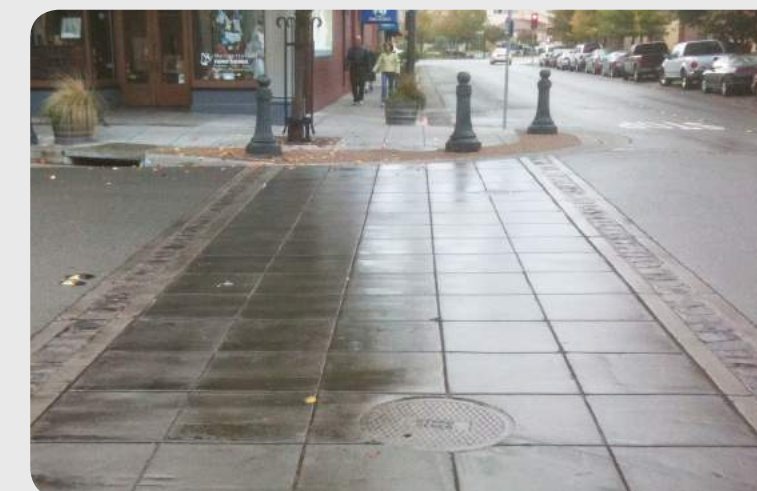
PEDESTRIAN EXPERIENCE



Bulb-outs for Safer Pedestrian Crossings



Sidewalk Widening
(Above) Sidewalk Widening at Valencia St



Raised Sidewalk Crossing at Alleyways
Opportunity for Special Paving, (Above) Valencia St, Adair St, Newcomb Ave and other examples



2 Streetscape Opportunities

STREET TREES



Infill Street Trees

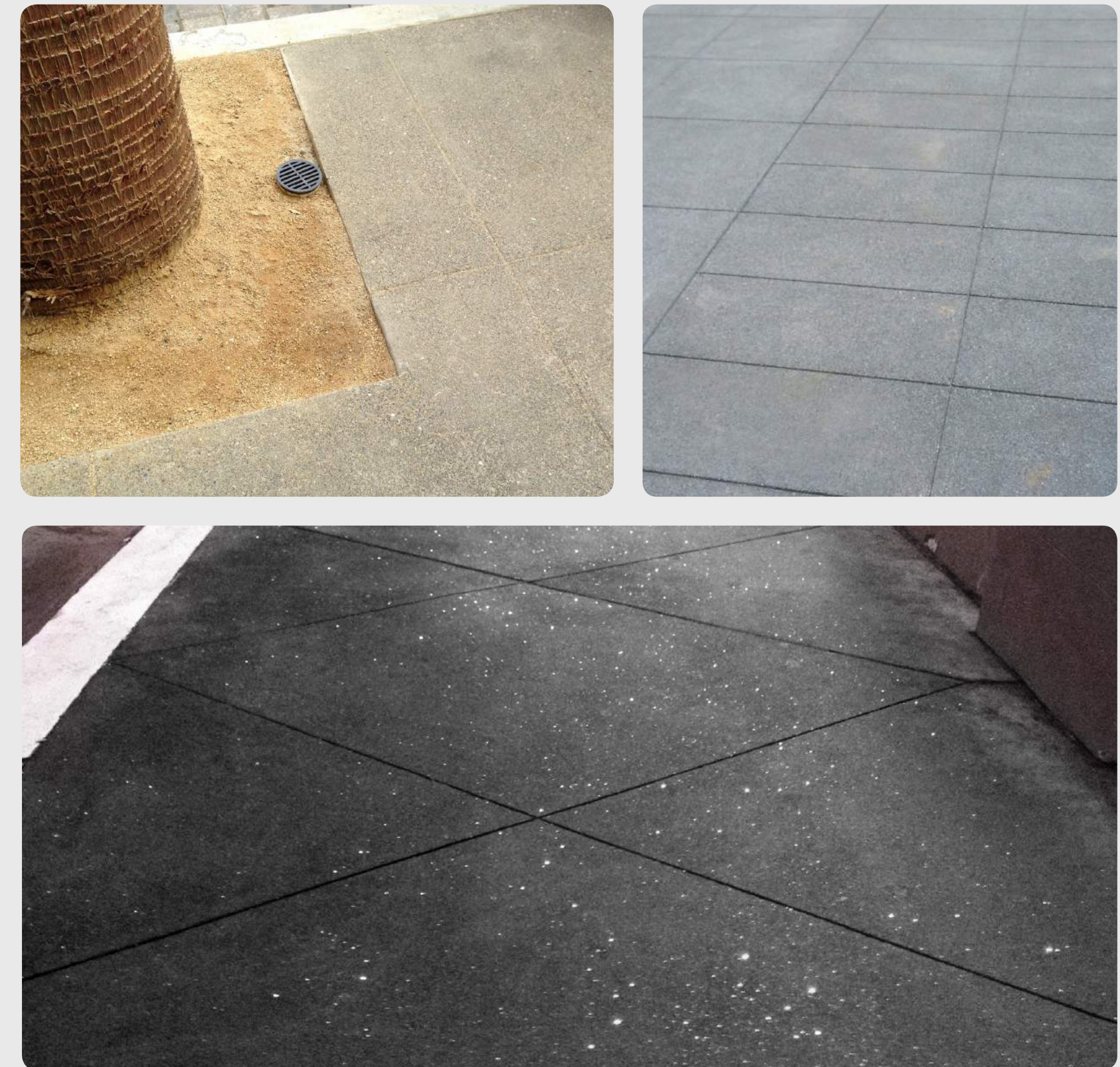


The Value of Planting & Protecting Urban Trees

A mature tree in an urban area provides up to \$162,000 in ecosystem services

- Trees absorb carbon dioxide (up to 25 lbs of CO₂ per year)
- Trees produce oxygen
- Trees reduce up to 60% of particulate pollution in the air
- Trees provide erosion control and act as flood control agents
- Trees provide habitat for birds and beneficial insects
- People are more likely to shop on streets that are planted with trees
- Clean & green settings experience less crimes such as vandalism, graffiti, & litter
- Trees act as traffic calming agents (drivers perceive the streets as more narrow)

PAVING OPPORTUNITIES



New Concrete Sidewalks
w/ Integral Color and Special Finish

SITE AMENITIES



Trash Receptacles

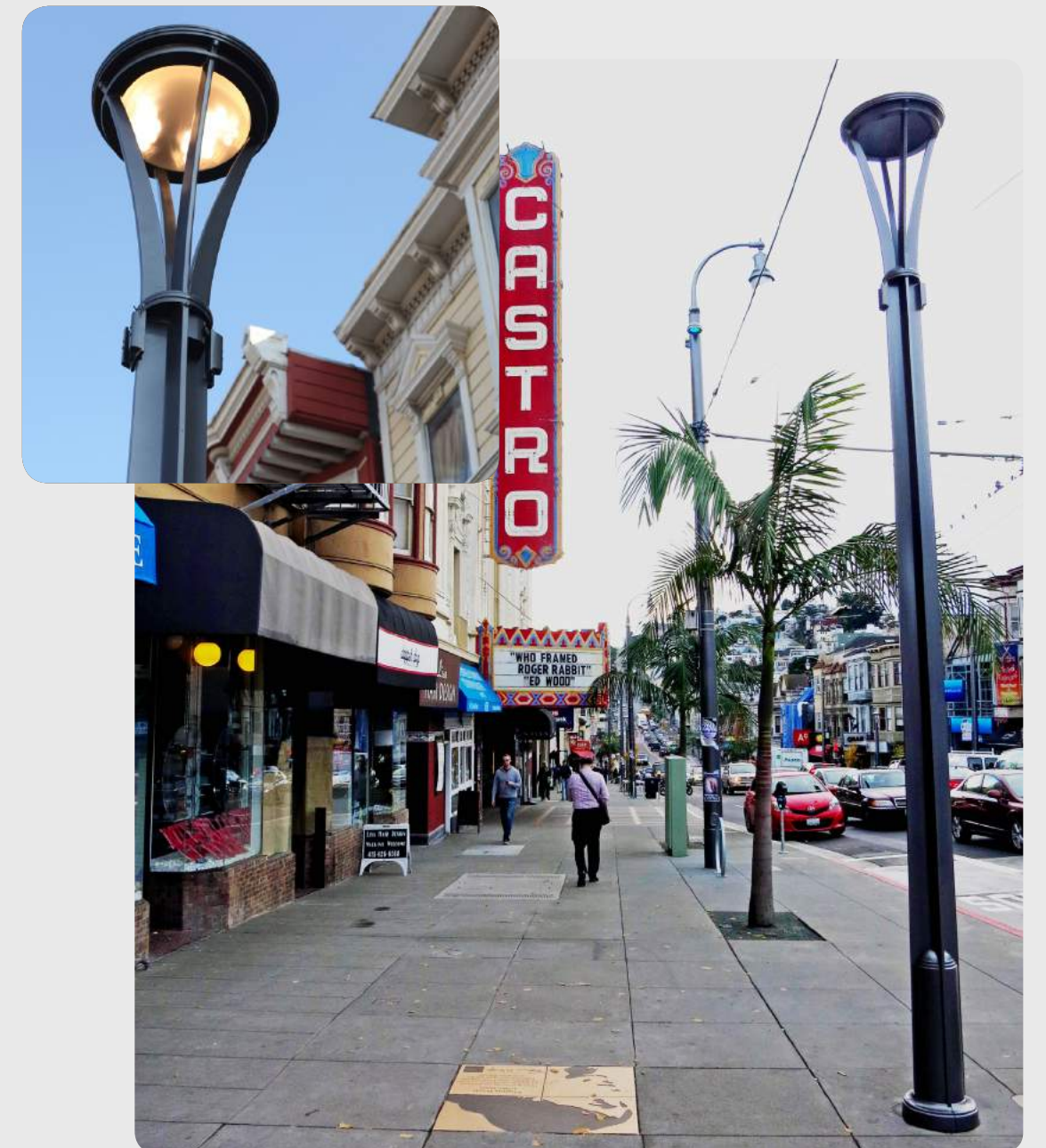


Bike Racks

PEDESTRIAN SCALE LIGHTING



Historic Pedestrian Fixture
Typ. 16' Height



Modern Pedestrian Fixture
Typ. 16' Height

SITE FURNISHINGS



Informal Seating at Key Locations



3 Streetscape Opportunities

NEIGHBORHOOD IDENTIFIERS

SFMTA.COM/6THSTREET

NEIGHBORHOOD IDENTIFIERS



Vertical Community Gateway/
Neighborhood Identifier*



Custom Thermoplastic Crosswalks*
Between Standard White Continentals



Note: Images are for representation and not to be taken literally. Exact design of special paving in crosswalk would require review and approval from SFMTA



Special Paving Area at Bulb-Outs*

6TH STREET 'LIGHT DISTRICT'



Light Projection Opportunities*



Sculptural Lighting/ Light Columns*



*Note: Elements would require a Community Steward/ Partnership for maintenance and programming purposes.