



Better BART and the M85 San Francisco Track Closure:

Daly City – Glen Park

June, 28, 2015

Teresa Tapia -Service Planner
and Bus Bridge Manager



Outline

- **Background**
- **Description**
- **Tentative Dates**
- **Service Plan**
- **Questions and Comments**



Background

- BART is 45 years old and key infrastructure is in need of maintenance and repair;
- BART has developed the Better BART program to address these maintenance needs, improve safety and modernize the infrastructure to provide service for the next 40 years.





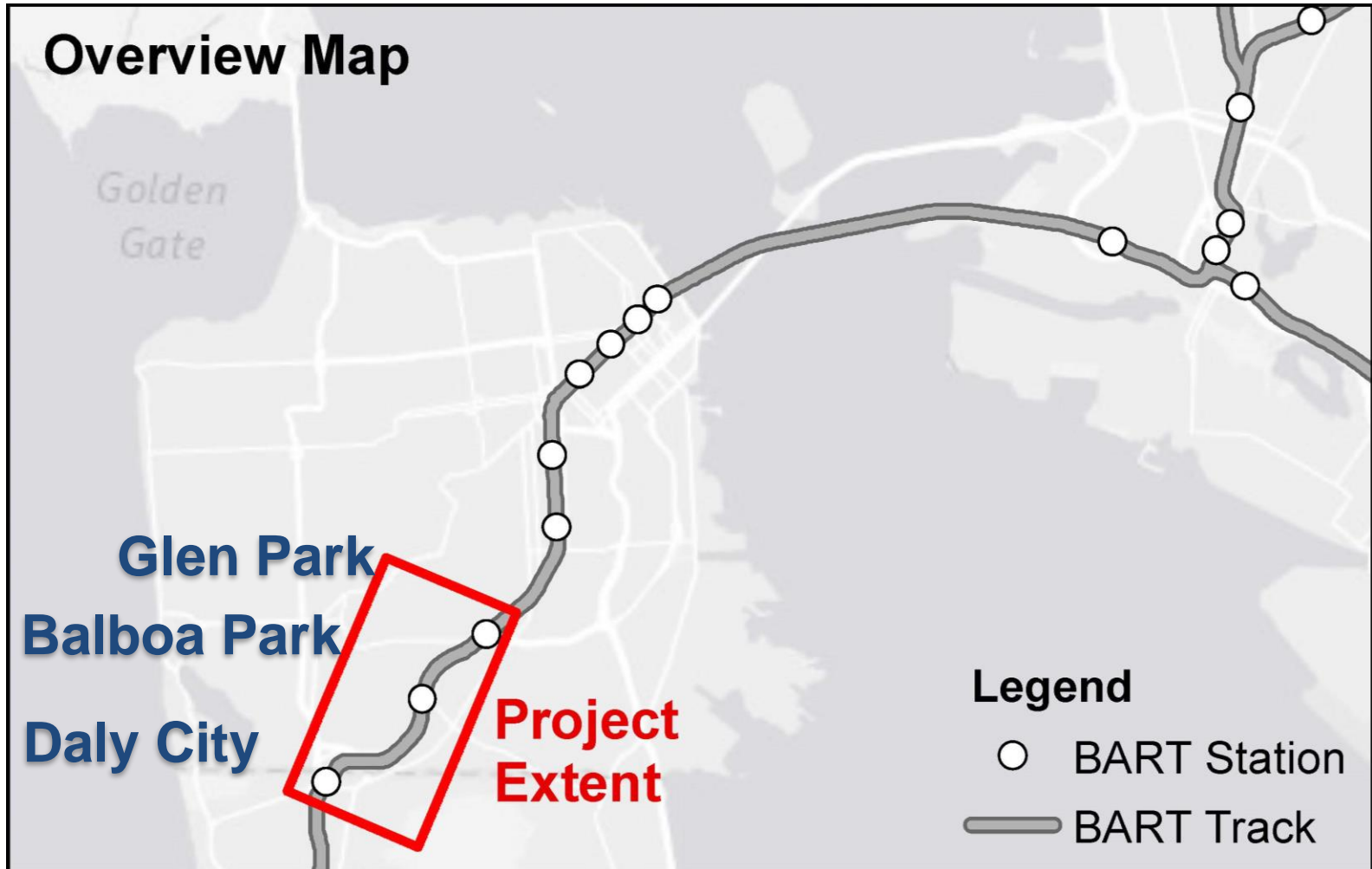
Background

- Daly City –Glen Park corridor is a key part of the system;
- Approximately 100,000 riders travel through the corridor on an average weekday;
- The M85 is an important “Interlocking,” located between Daly City and Balboa Park, has approach the end of its useful life and must be replaced





Closure Description





Closure Description

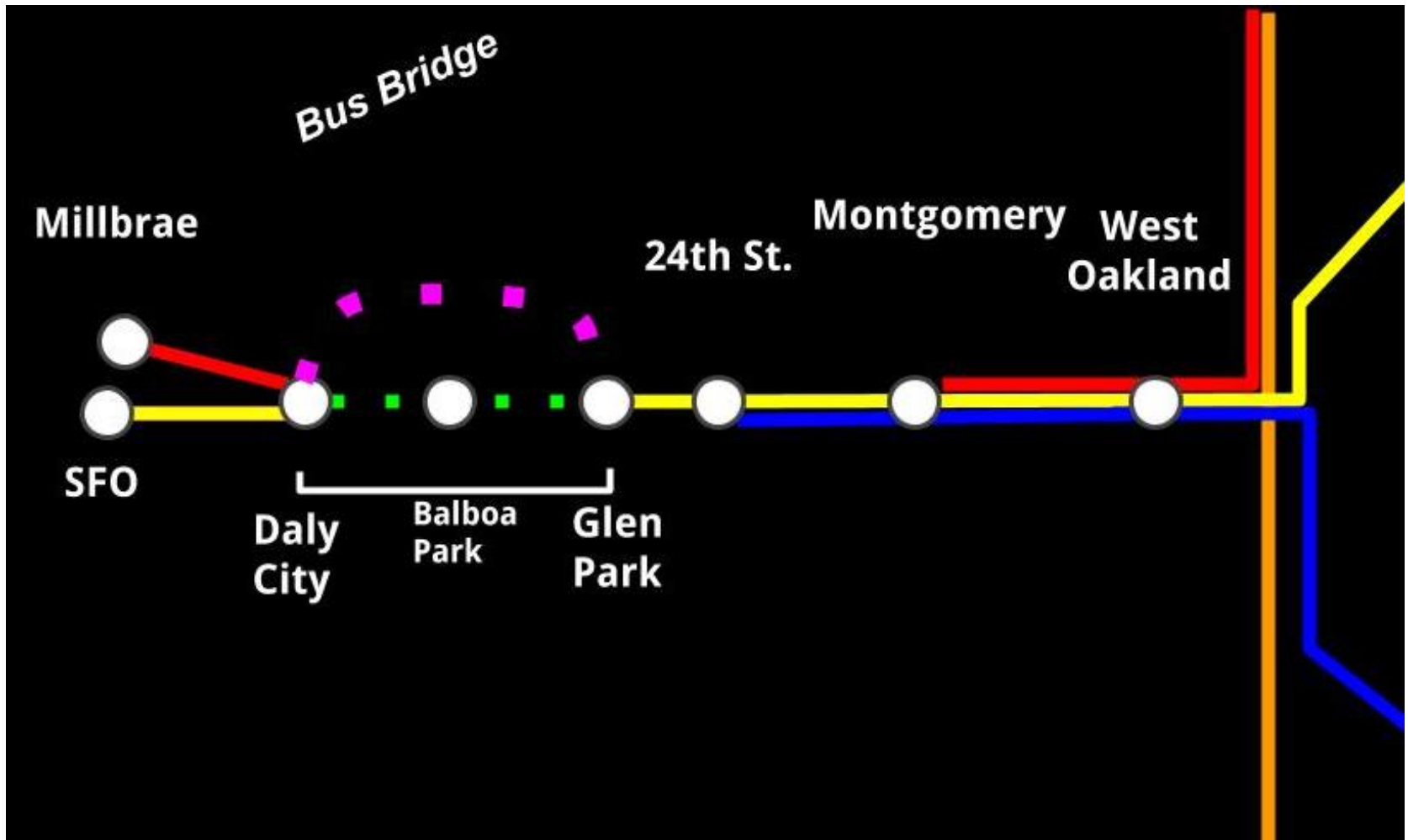
We maximize the amount of work for every shutdown

- Refurbishment of the M85 Interlocking
- Replacement of railroad track between Daly City and Glen Park, including the installation of dampers to reduce noise; and
- Completion of a critical phase of the Balboa Park Eastside Connections Project and other maintenance needs such as track side trimming.

The work would be completed over Seven (non-consecutive) weekends beginning July 30-31st and ending early October 2016



Track Closure: Service Plan



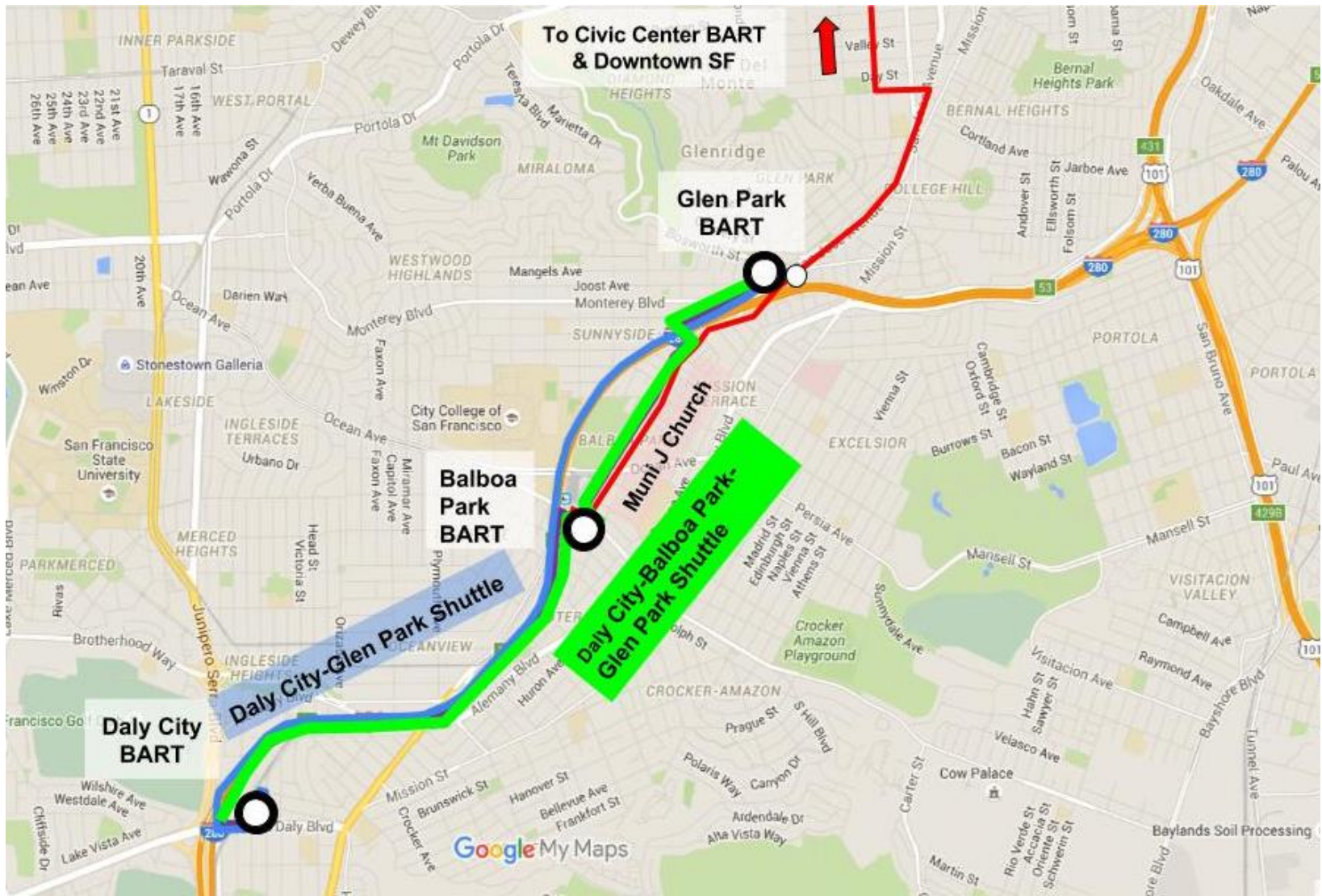


Track Closure: Service Plan

- On the southern part of the closure – there will be shuttle service to both Millbrae and SFO;
- On the northern part of the closure the Pittsburg Bay Point/SFO (Yellow) will operate to Glen Park;
- The Dublin-Pleasanton line would operate to 24th Street;
- The Richmond-Daly City line (Red) to Montgomery; and
- The Fremont-Daly City line (Green) will not be operating during closures.



Track Closure: Service Plan





Track Closure: Service Plan

Bus Service

- Express bus service - provided by Samtrans between Glen Park and Daly City (handle 65-70% of travel);
- Local bus service - provided by Muni to shuttle Balboa Park residents to Daly City & Glen Park;

Stations & Connections

- Details like pick-up locations are still being developed;
- To support operations, Daly City Upper lot and Glen Park surface lot will be closed;
- Many transit alternatives in the area: Caltrain, Muni (J Church, 14R Mission, 49 Mission-Van Ness), Samtrans (292 and 122);

Expect delays of 20-40 minutes as a result of the closure.



Questions and Comments



Thank You for your time.