



Folsom Streetscape Project

2nd Street to Embarcadero

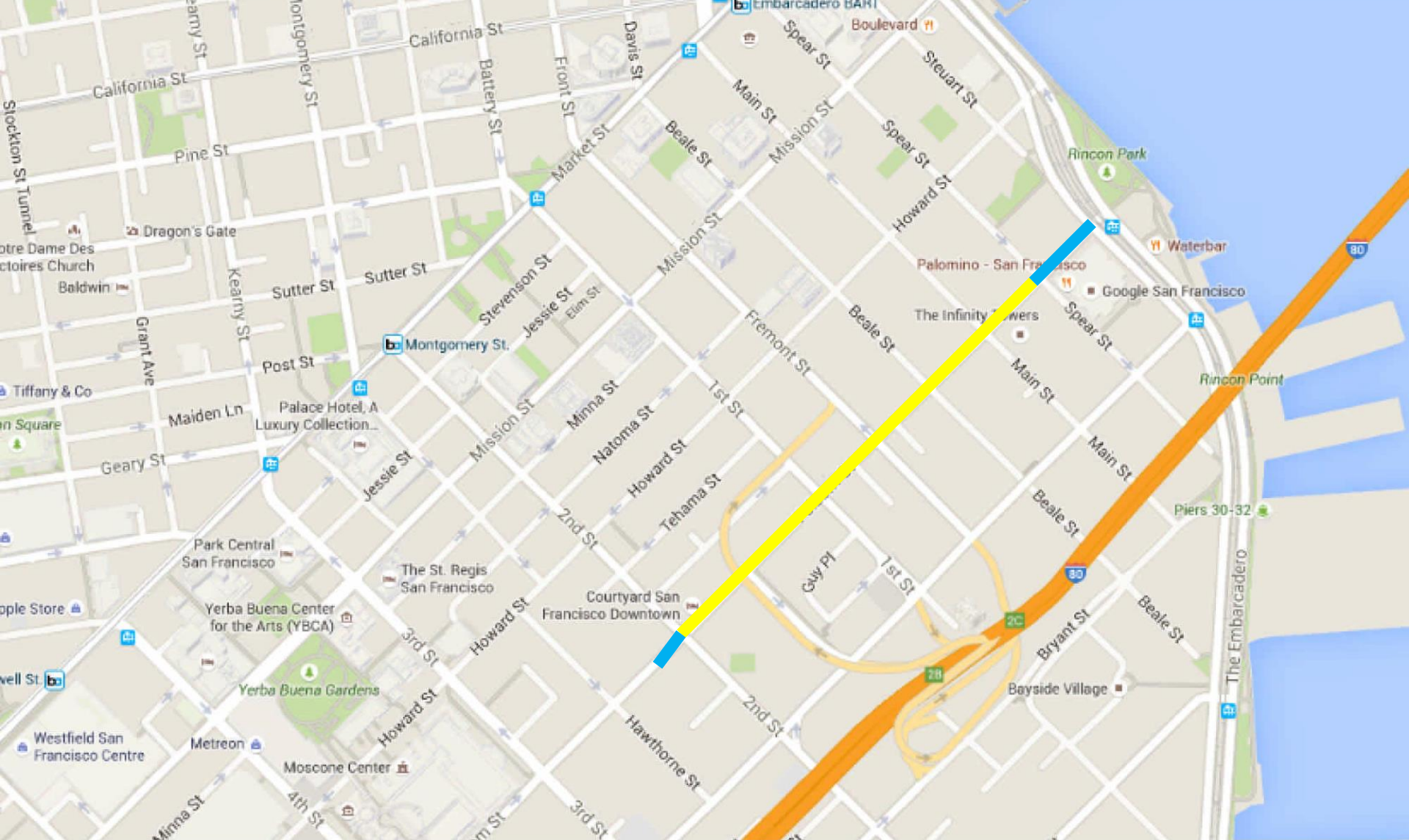
SFMTA Citizens Advisory Council

August 4, 2016



Embarcadero Freeway Terminal Separator Structure



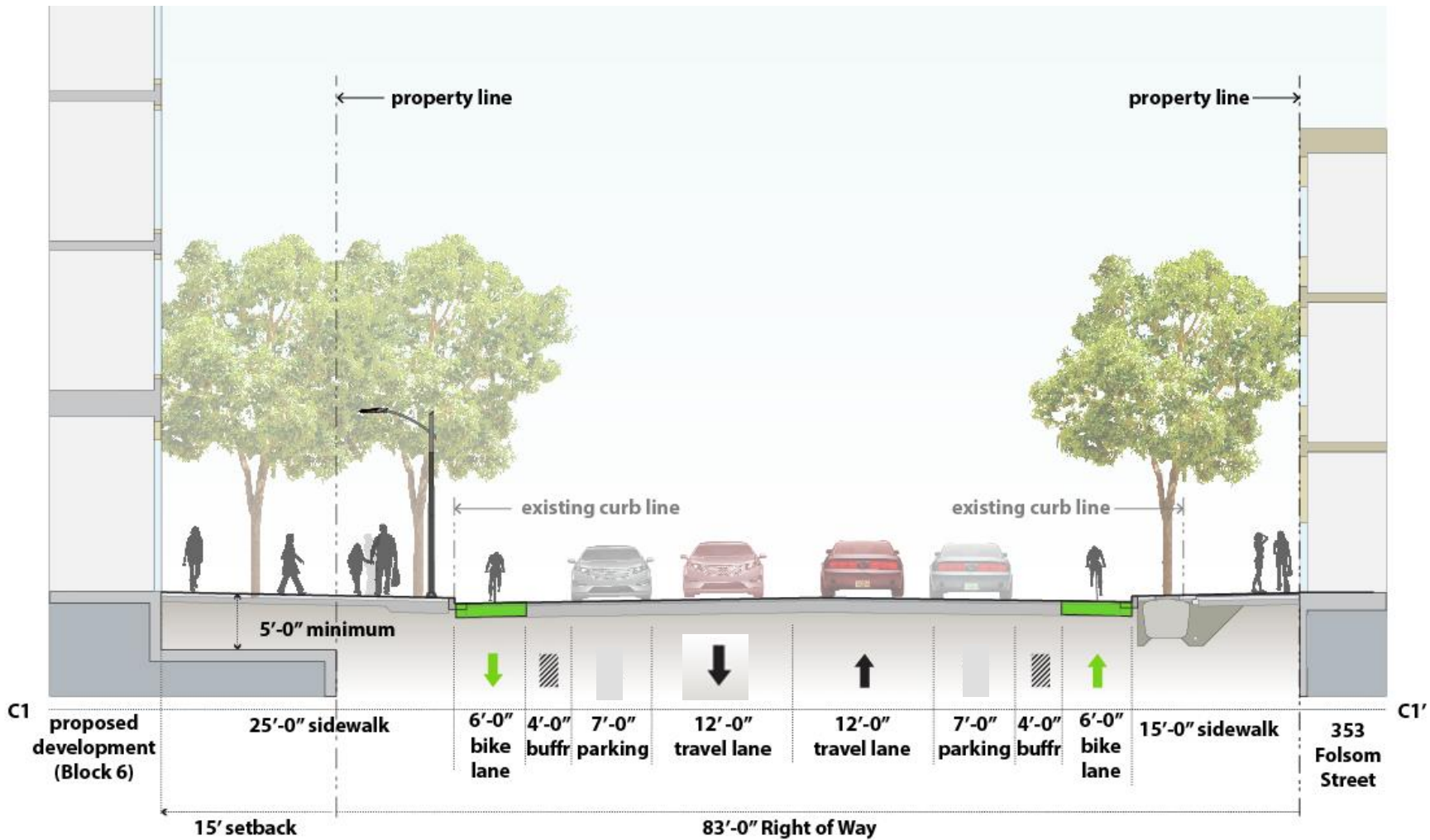


Widened sidewalks, rain gardens, and protected bike lanes
Protected bike lanes only



Folsom Streetscape

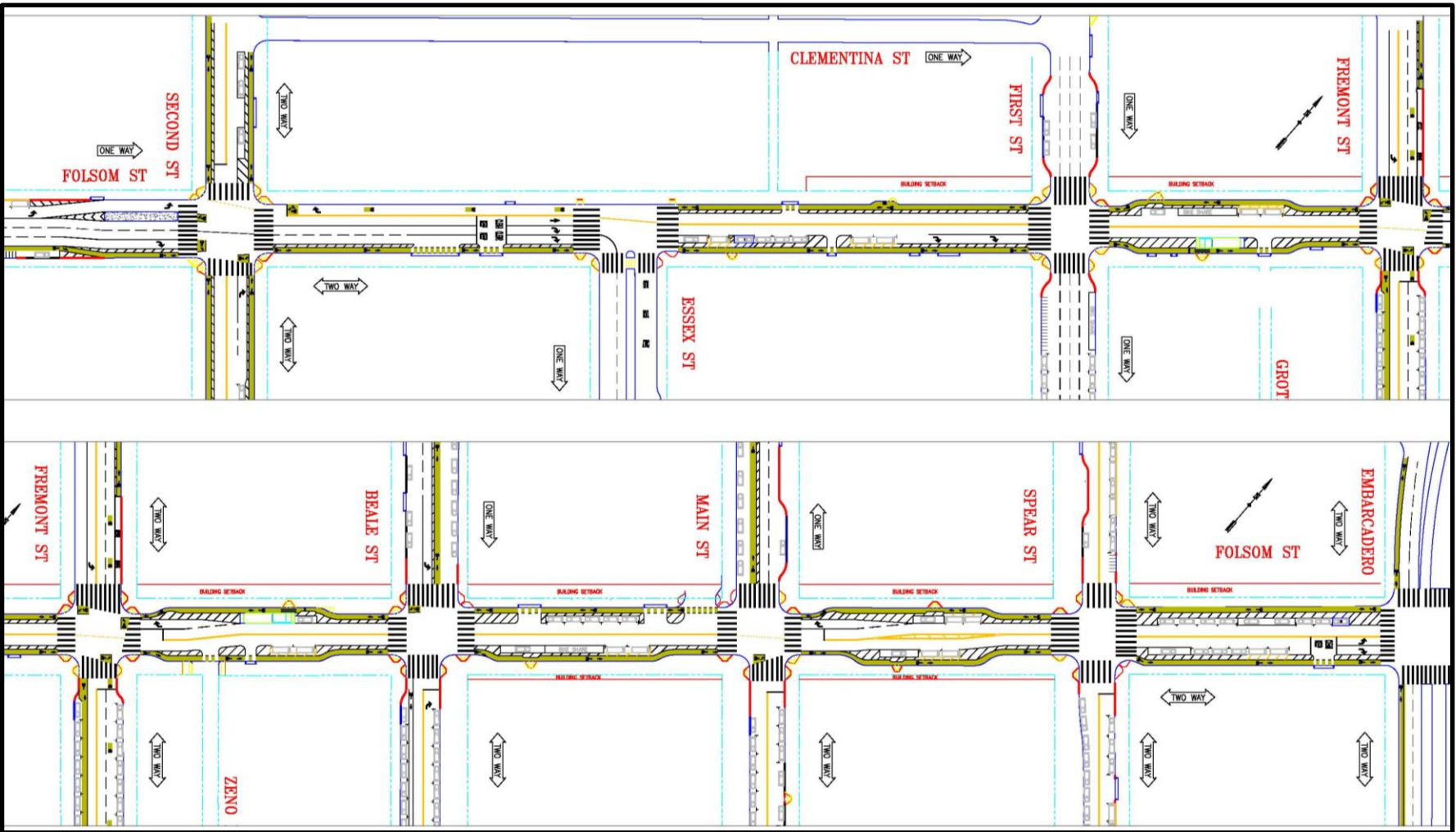
Final Striping



Typical Folsom St. Section (2018 Striping):
Fremont to Beale



Folsom Streetscape – Second Street to Embarcadero



Project Timeline

- 1989:** Loma Prieta earthquake damages Embarcadero Freeway
- 1991:** Freeway removed
- 2005:** Rincon Hill Plan & Transbay Redevelopment Area adopted
- 2006:** Transbay Streetscape and Open Space Plan
- 2012:** Transit Center District Plan adopted
- 2013-2015:** Design refinement
- 2016:** Legislation
- 2017:** Folsom Street construction
- 2018:** Completion



Development Blocks: 1, 6, 8, 9, and 201 Folsom

TRANSBAY REDEVELOPMENT PROJECT AREA



Under-Ramp Park
Acres: 2.5
Construction Start: 2016



Block 9
Developer(s): Essex/ BRIDGE
Market-Rate Units: 436
Affordable Units: 109
Total Units: 545
Construction Start: 2016
Completion: 2019



**Rene Cazenave/
Block 11A**
Developer(s): BRIDGE/
CHP
Affordable Units: 120
Total Units: 120
Construction Start: 2011
Completion: 2013



Block 8
Developer(s): Related/TNDC
Market-Rate Units: 404
Affordable Units: 150
Total Units: 554
Construction Start: 2016
Completion: 2019



Parcel T
Developer(s): Boston Properties/Hines
Office Sq. Ft.: 1.4 Million
Construction Start: 2014
Completion: 2017



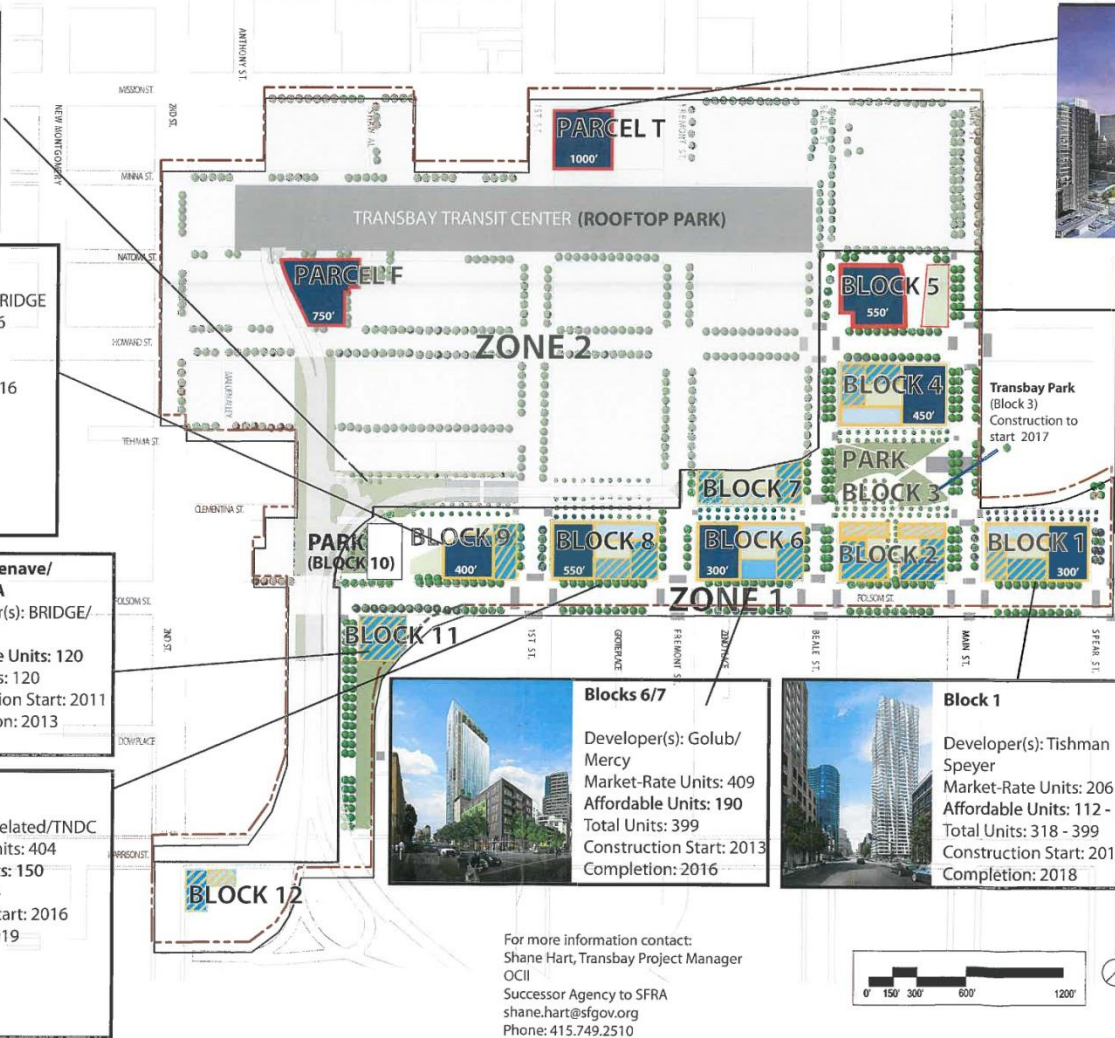
Block 5
Developer(s): Golub/
John Buck
Office Sq. Ft.: 787,000 SF
Construction Start: 2016
Completion: 2019



Blocks 6/7
Developer(s): Golub/
Mercy
Market-Rate Units: 409
Affordable Units: 190
Total Units: 399
Construction Start: 2013
Completion: 2016



Block 1
Developer(s): Tishman Speyer
Market-Rate Units: 206 - 258
Affordable Units: 112 - 141
Total Units: 318 - 399
Construction Start: 2016
Completion: 2018



TRANSBAY REDEVELOPMENT PROJECT AREA

- TRANSBAY REDEVELOPMENT PROJECT AREA
- ZONE 1
- ZONE 2

LAND USE (SUBJECT TO CHANGE)

- AFFORDABLE HOUSING
- MARKET RATE HOUSING
- COMMERCIAL

OPEN SPACE

- OPEN SPACE (PUBLICLY OWNED)
- OPEN SPACE (PRIVATELY OWNED)

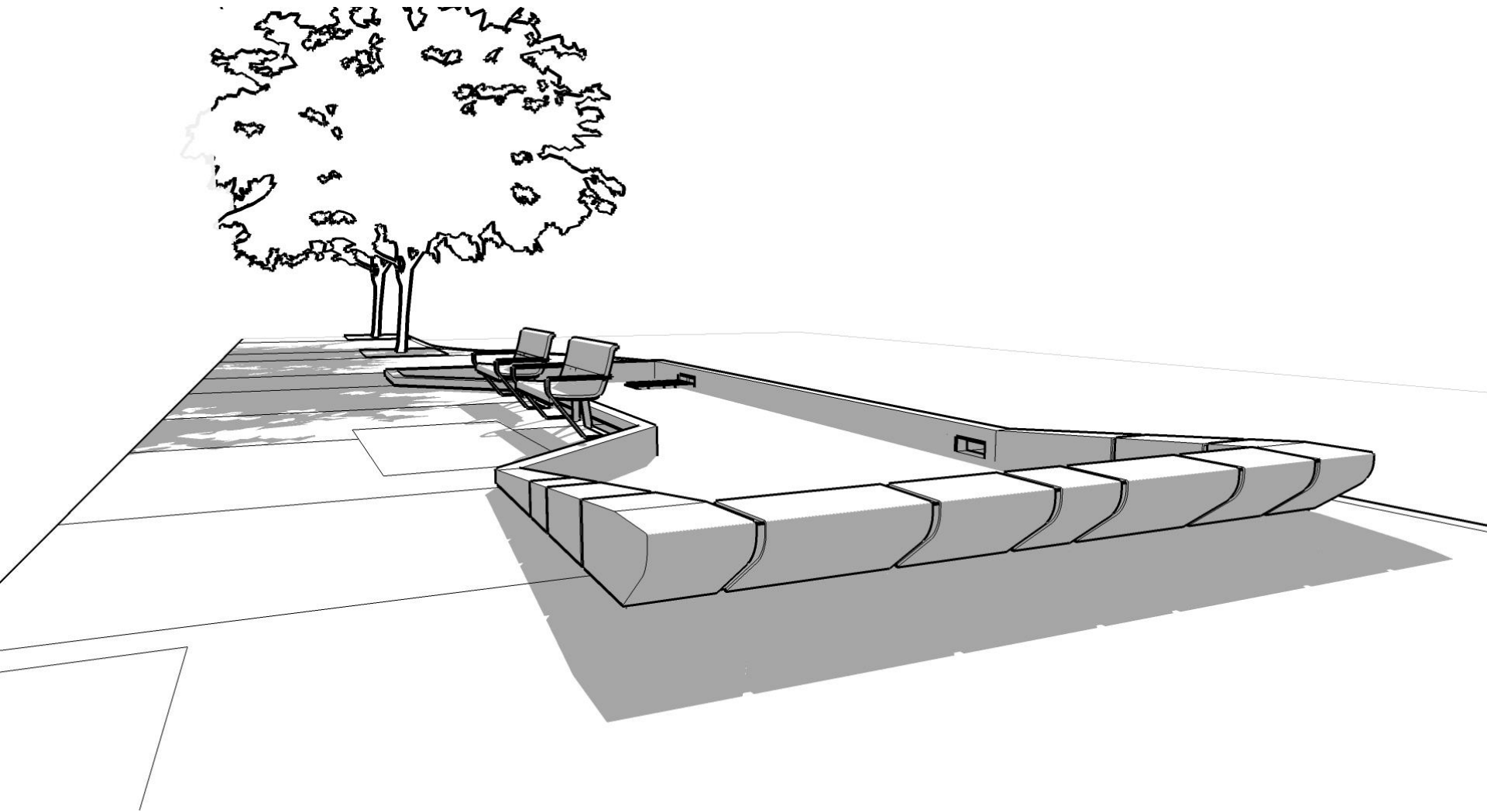
PROPOSED HEIGHT LIMITS (MIN AND MAX)

- Townhomes: 35-50'
- Podium 1: 40-65'
- Podium 2: 50-85'
- Mid-Rise: 65-165'
- Towers (Height Varies)

For more information contact:
Shane Hart, Transbay Project Manager
OCII
Successor Agency to SFRA
shane.hart@sfgov.org
Phone: 415.749.2510




Folsom Streetscape




Folsom Streetscape

8'-0" WIDE GRANITE BAND




Granite Paver
 12"x48"x1.5" Coldspring granite
 Academy Black
 Thermal Finish on top surface
 Sawn sides and bottom
 Mortar set on concrete subslab

CONCRETE PAVING WITH INTEGRAL COLOR



Concrete sidewalk infill
 Davis Colors - Sierra 61078
 Sawcut control joints
 Medium sandblast finish

PERMEABLE GRAVEL AT TREE PIT



Resinset Gravel
 Gravel-lok
 5'-6" x 8'-0" area at street trees
 Dove Grey Pebbles

BIKE RACK

Welle
 'Circular Bike Rack with Square Tube'



Folsom Streetscape

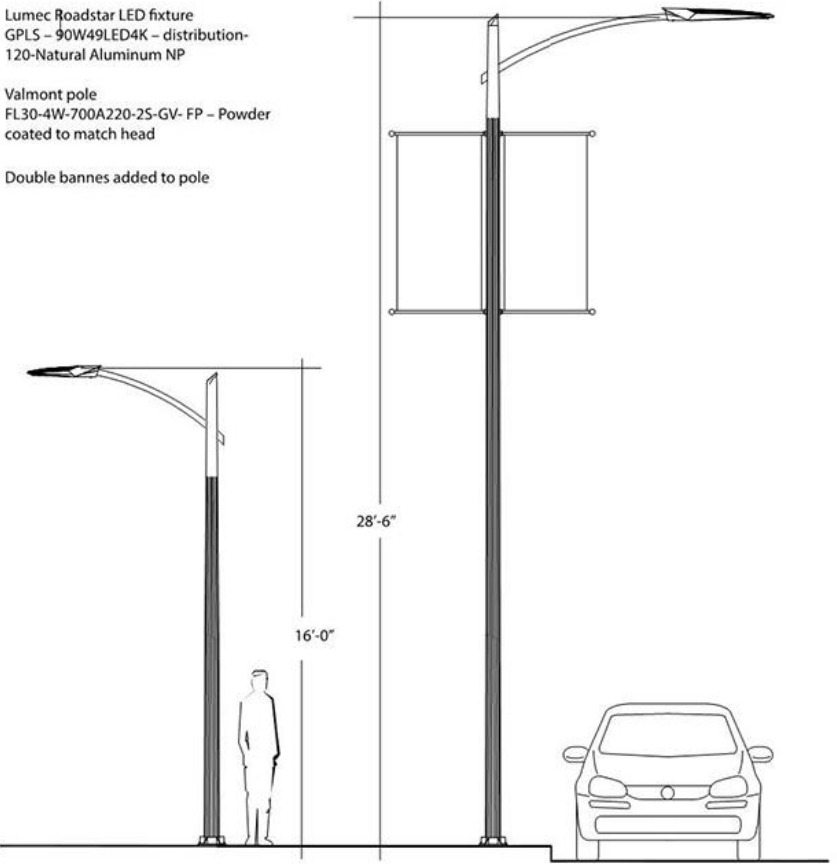
VEHICULAR AND PEDESTRIAN HEIGHT STREETLIGHTS

Lumec Roadstar fixture with Valmont pole

Lumec Roadstar LED fixture
GPLS - 90W49LED4K - distribution-
120-Natural Aluminum NP

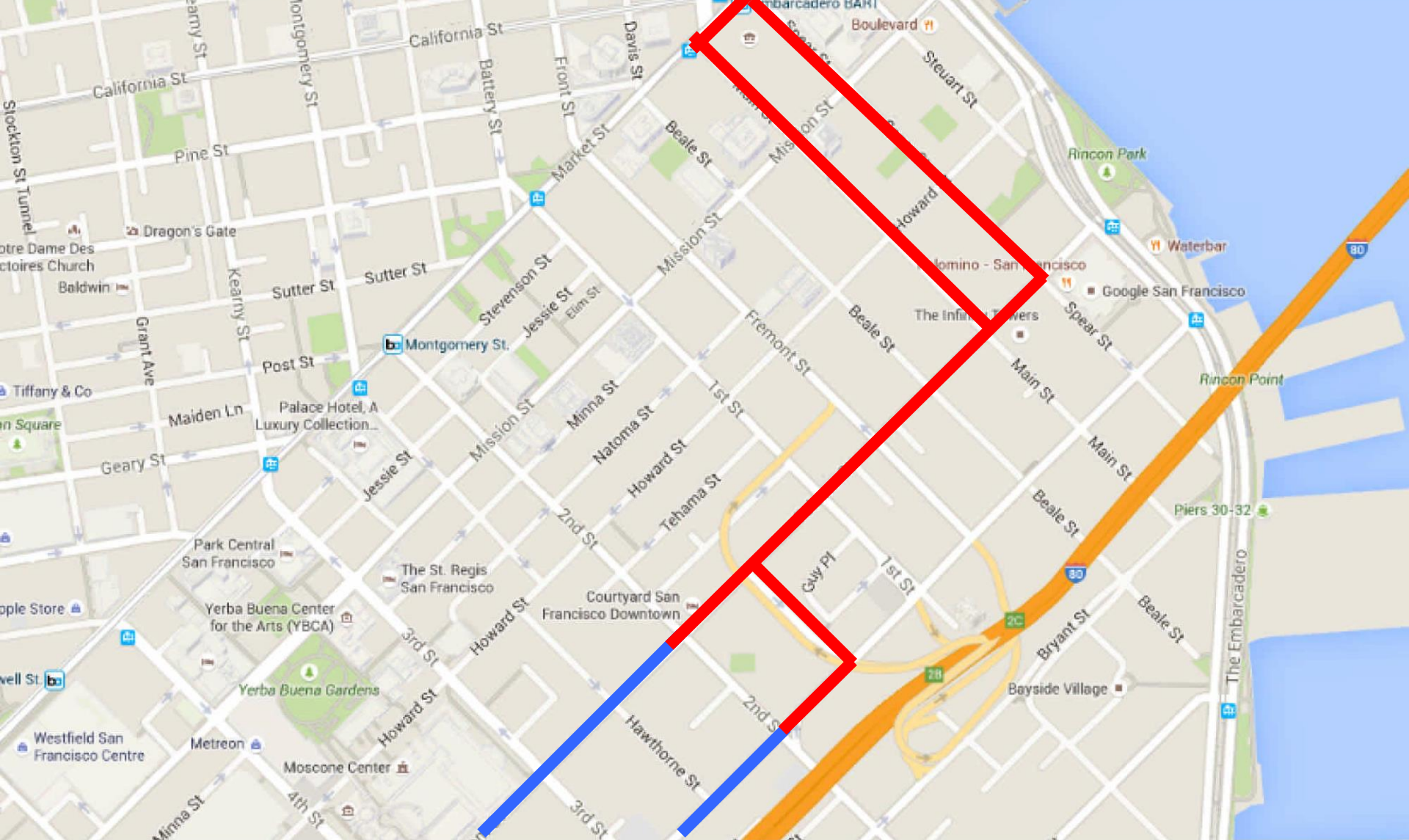
Valmont pole
FL30-4W-700A220-2S-GV- FP - Powder
coated to match head

Double bannes added to pole



LOPHOSTEMON CONFERTUS Brisbane Box





Existing Muni 12 Folsom
Extension

