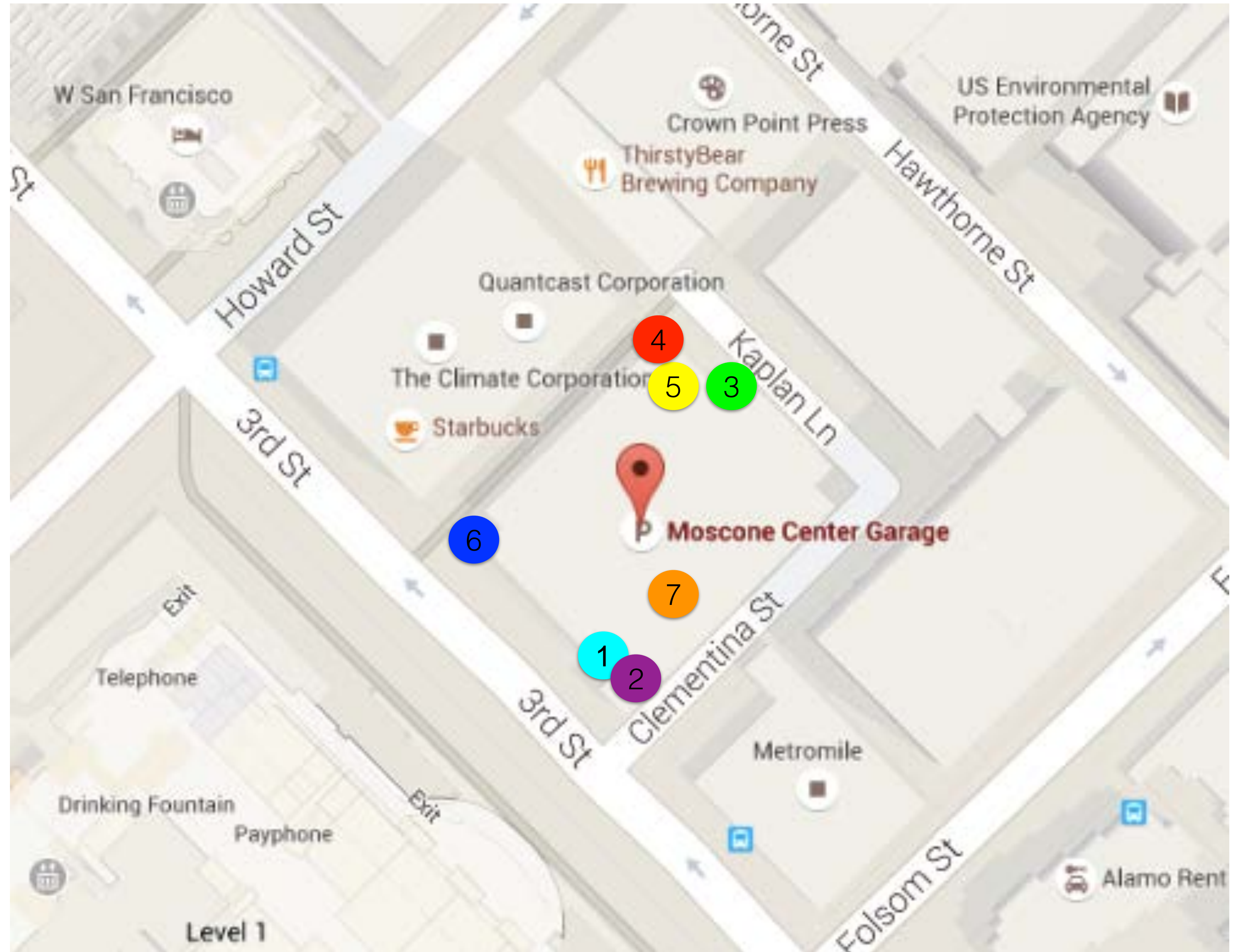


SITES UNSEEN

MOSCONE GARAGE LOCATION MAP

Artwork will be installed:

- 1 on four walls at the top of the tower located at the southeast corner of the garage
- 2 on a wall located on the side of the southeast tower of the garage, facing Clementina Street East
- 3 on a ground-level freestanding wall located at the rear of the garage, facing Kaplan Lane
- 4 on a portion of a wall located on the northwest corner of the garage, on the corner of Kaplan Lane facing Howard Street
- 5 on a low perimeter wall located on the rooftop of the garage, on the Kaplan Lane side of the building
- 6 on a portion of a breezeway structure located on the southwest corner of the garage, on the corner of 3rd St
- 7 on the interior of the garage, inside the stairwell that connects Floors 2 & 3

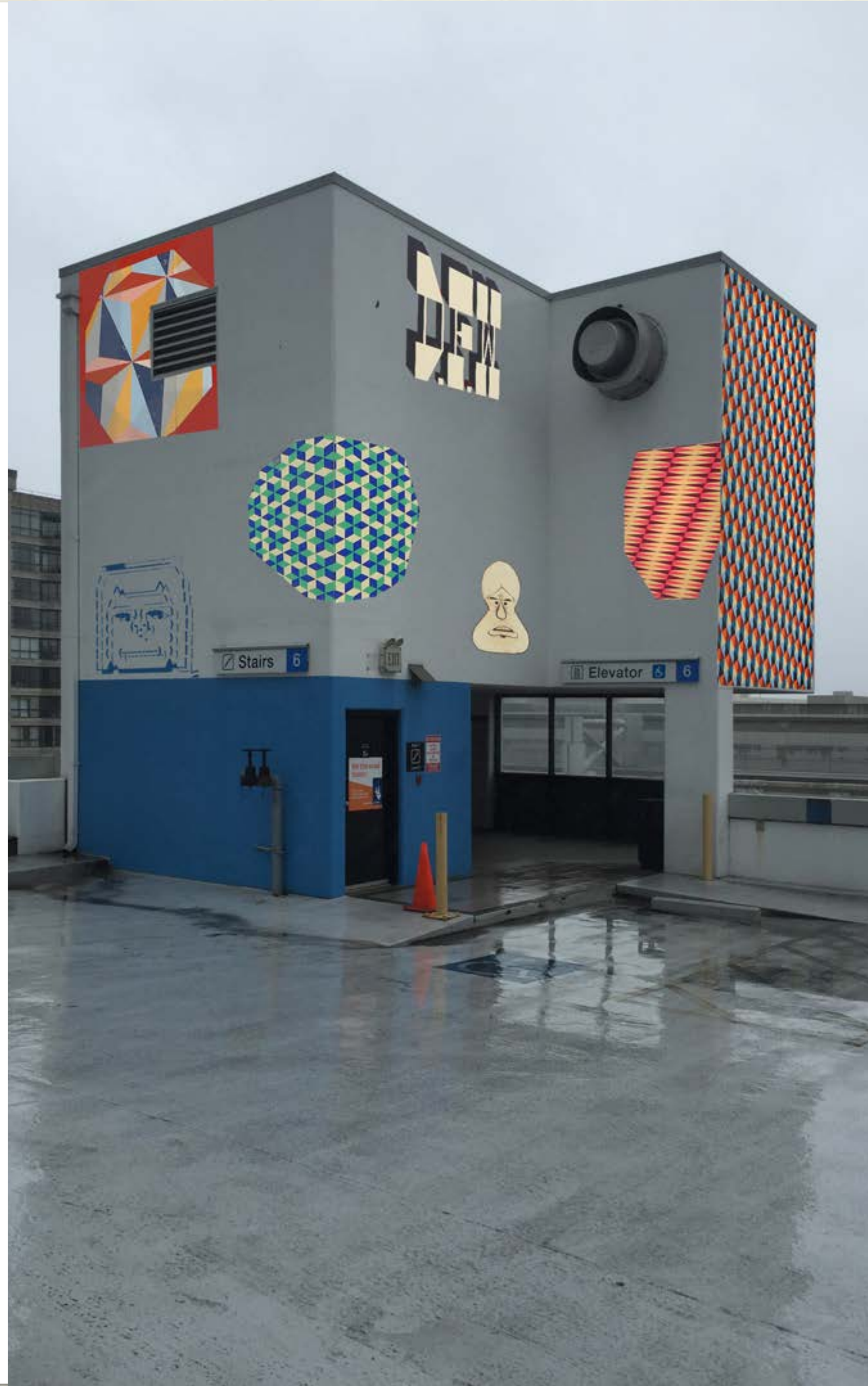


1

SITES UNSEEN

MOSCONE GARAGE

CORNER OF CLEMENTINA ST (EAST) & 3RD ST



Artwork will be installed at the top of the tower located at the southeast corner of the garage, on four walls, three of which measure approximately 10' (W) x 15' (H), one of which is approximately 6' (W) x 15' (H)

MOSCONE GARAGE
CORNER OF CLEMENTINA
STREET EAST & 3RD
STREET

Artwork will be installed at ground-level on a wall located on the side of the southeast tower of the garage, facing Clementina Street East. Painted element will measure approximately 3' (W) x 2' (H)



LOCATION #2 MOVED
VAC Approval requires
mural face Third St.



3

SITES UNSEEN

MOSCONE GARAGE KAPLAN LANE



Artwork will be installed on a ground-level freestanding wall located at the rear of the garage, facing Kaplan Lane, measuring approximately 15' (W) x 7' (H)

MOSCONE GARAGE

CORNER OF KAPLAN
LANE & WALKWAY TO
3RD ST

Artwork will be installed on a portion of a wall located on the northwest corner of the garage, on the corner of Kaplan Lane facing Howard Street, measuring approximately 12' (W) x 8' (H)

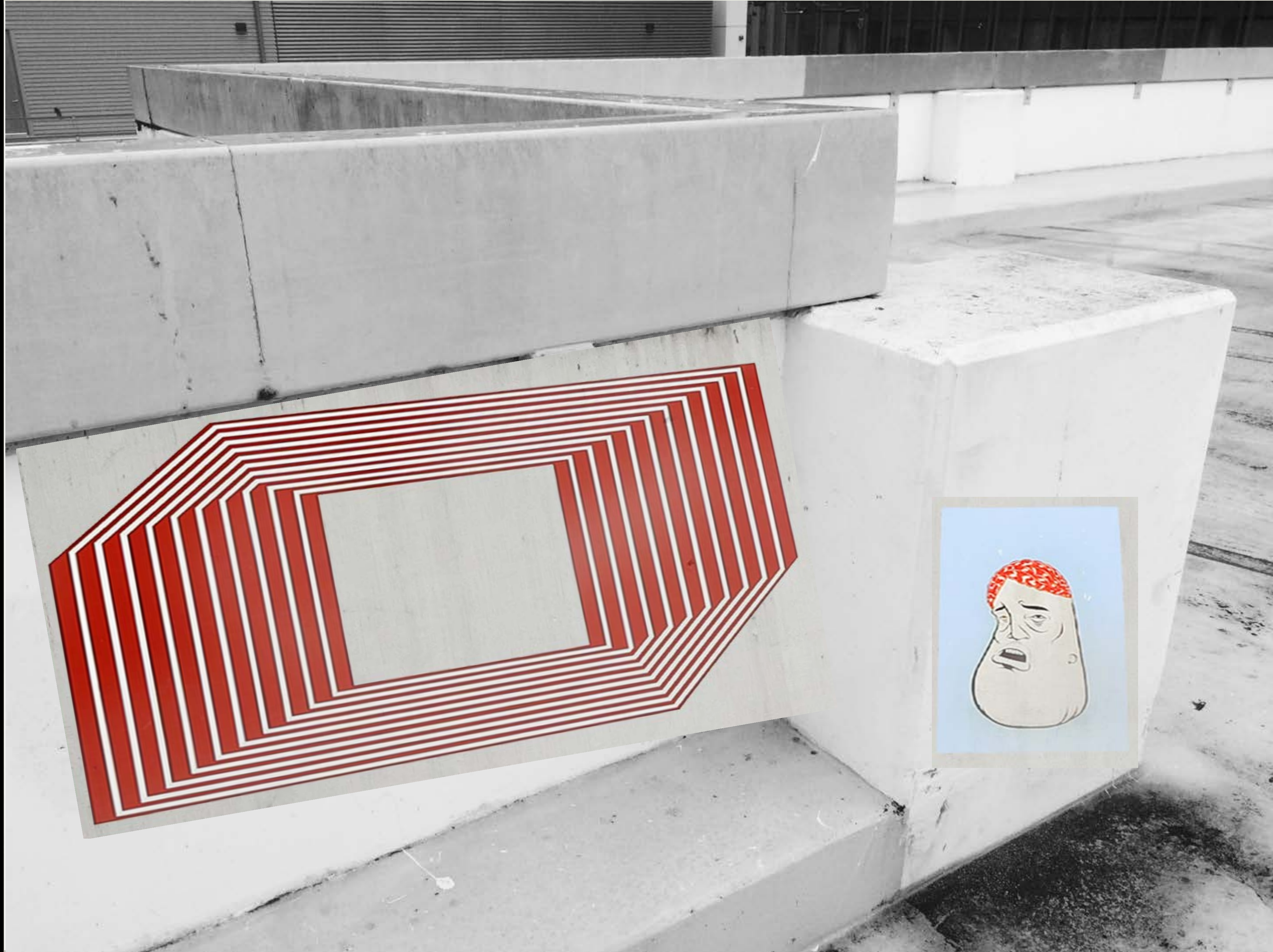


5

SITES UNSEEN

MOSCONE GARAGE

ROOFTOP, FACING
KAPLAN LANE



Smaller elements of the artwork will be installed on a low perimeter wall located on the rooftop of the garage, on the Kaplan Lane side of the building. approximately 4' (W) x 2' (H)

MOSCONE GARAGE

CORNER OF WALKWAY & 3RD STREET

Artwork will be placed on a portion of a breezeway structure located on the southwest corner of the garage, on the corner of 3rd Street, installed starting at approximately 10' above street level and extending to a total height of approximately 15' and a width of approximately 20'



7

SITES UNSEEN

MOSCONE GARAGE INTERIOR STAIRCASE



Smaller elements of the artwork will be hand-painted by the artist on the interior of the garage, inside the stairwell that connects Floors 2 & 3.

Locations 1, 2, 3, 5, 6, and 7 and part of Location 4 will be executed in acrylic and spray paint using vinyl stencils, and will be finished with a hard clear coat to protect the artworks from damage and provide UV protection. An anti-graffiti and urine-repellent coat will be applied on top of the hard clear coat to facilitate cleaning and maintenance.

The text element in Location 4 will be executed on a thin (approximately 3/8") plywood substrate primed and painted on all sides as the base for the upper artwork. The artwork will be painted on the boards and then put them in place one at a time. Holes will be drilled in the wood panels and a hammer drill used to penetrate the concrete about 2 inches deep. Wedge anchors with washers or lag shields with screws will be used to hold the wood to the the concrete.

