



SFMTA

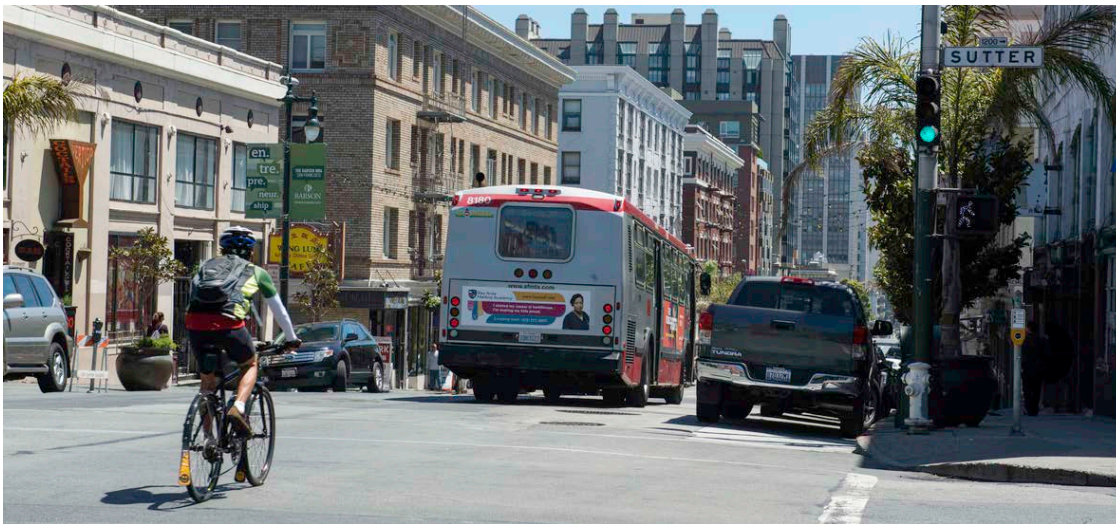
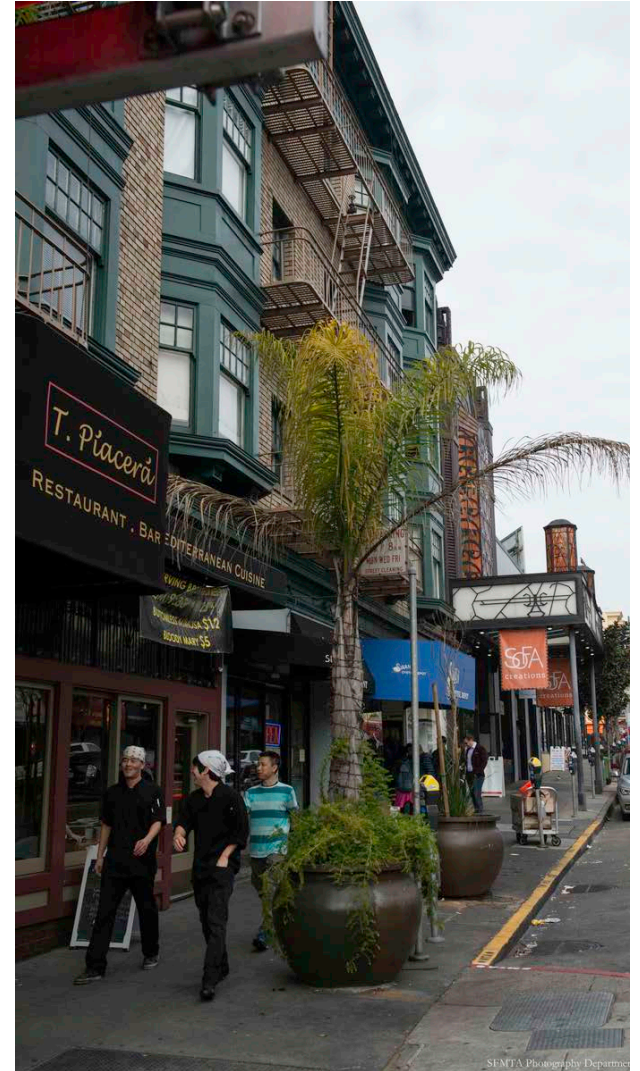
Municipal
Transportation
Agency

Polk Streetscape Project

March 3rd, 2015

SFMTA Board of Directors

Polk Street Today



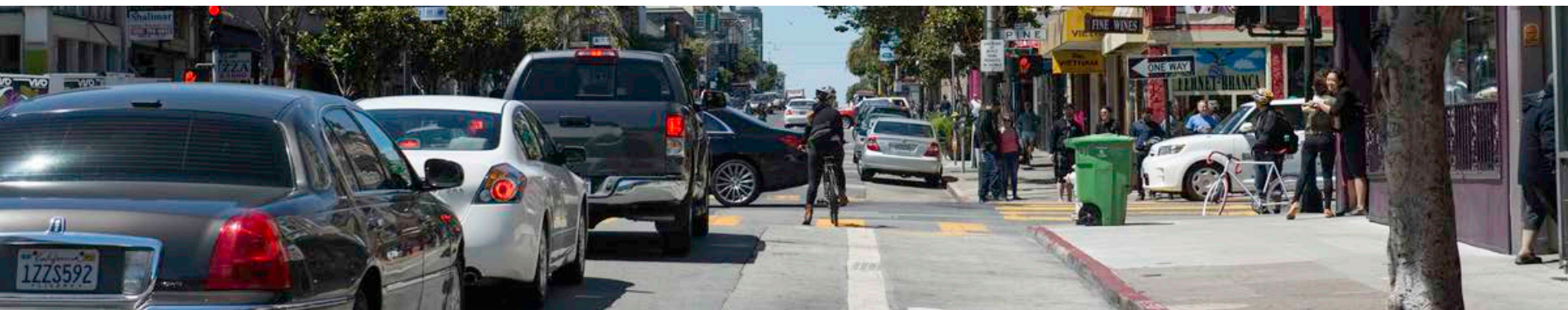
Transportation on Polk

How People Get There

Mode choice	Share of Total
Walk	55%
Transit	21%
Drive	17%
Bicycle	7%

5-Year Collision History

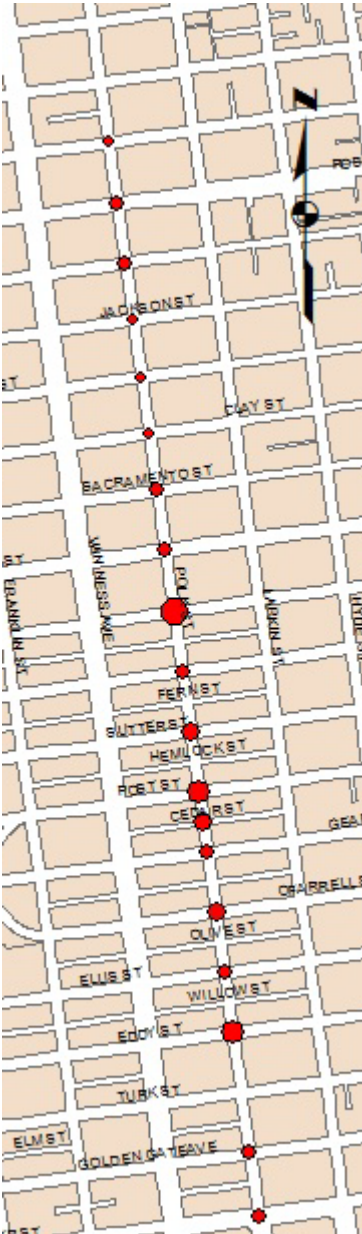
Pedestrian	Bicycle	5-Year Total
53	69	122



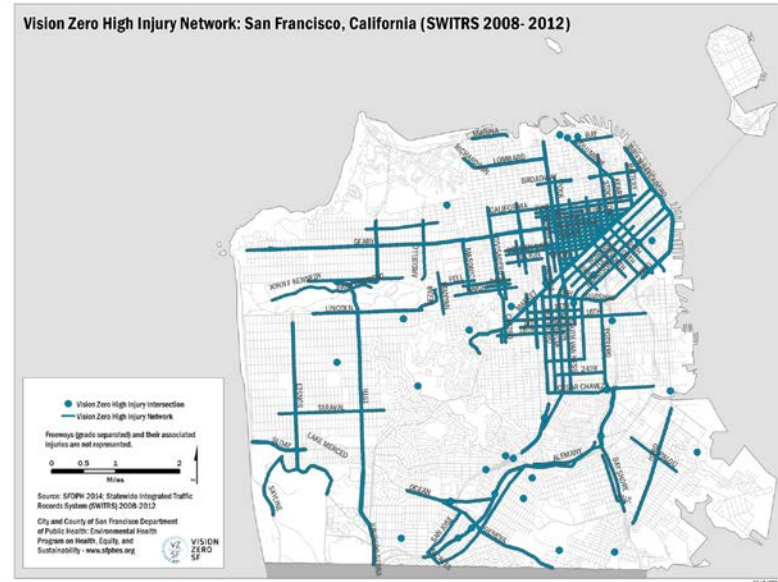
Bicyclists



Pedestrians



Vision Zero



Community Involvement

- 5 community meetings
- 6 walking audits
- 50+ focused meetings with community groups & stakeholders



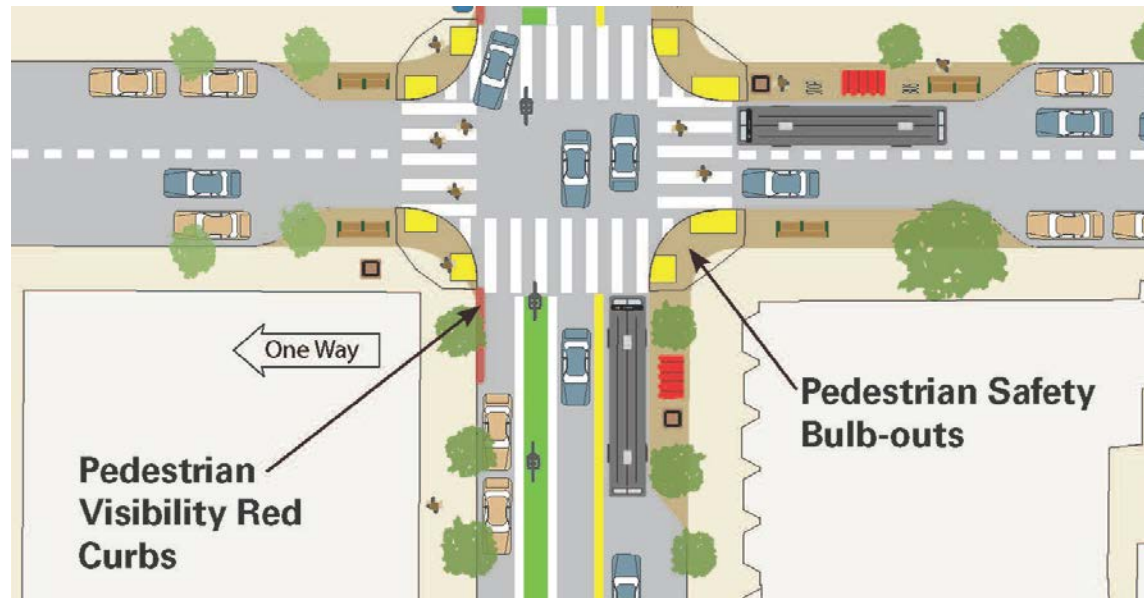
Project Overview

Comprehensive street safety & beautification improvements



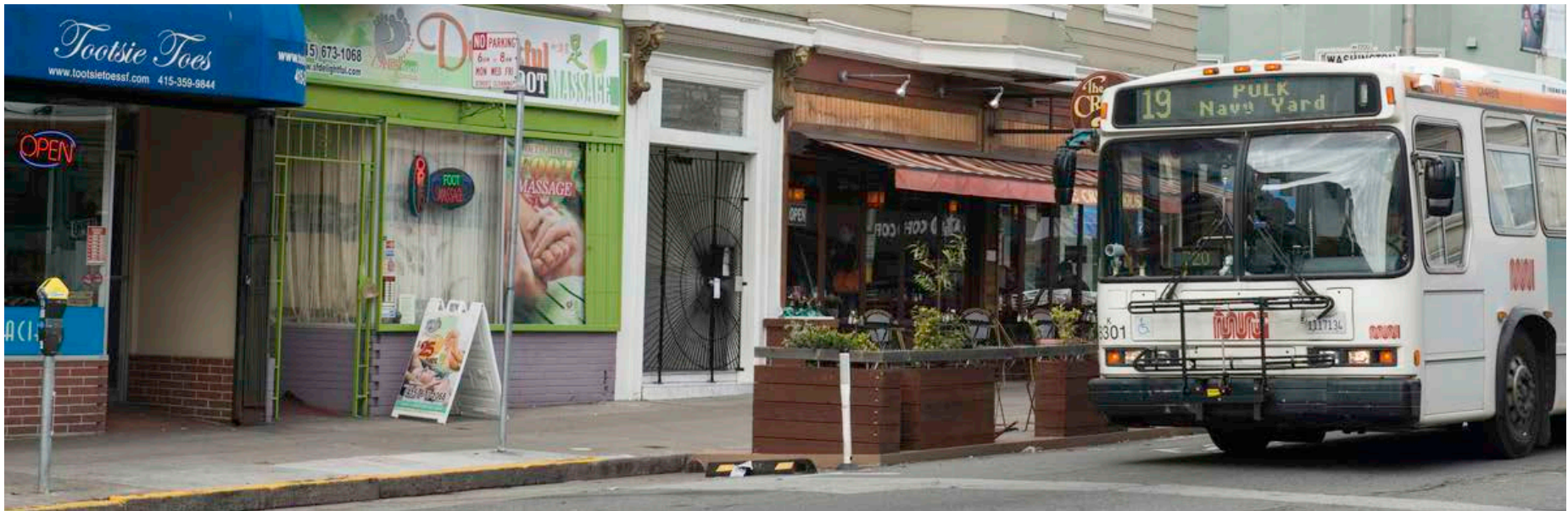
Pedestrian Safety Improvements

- High-visibility crosswalks
- “Daylighting” near intersections
- Bulb-outs at key corners
- Signal timing to slow vehicles or prioritize pedestrians at key locations

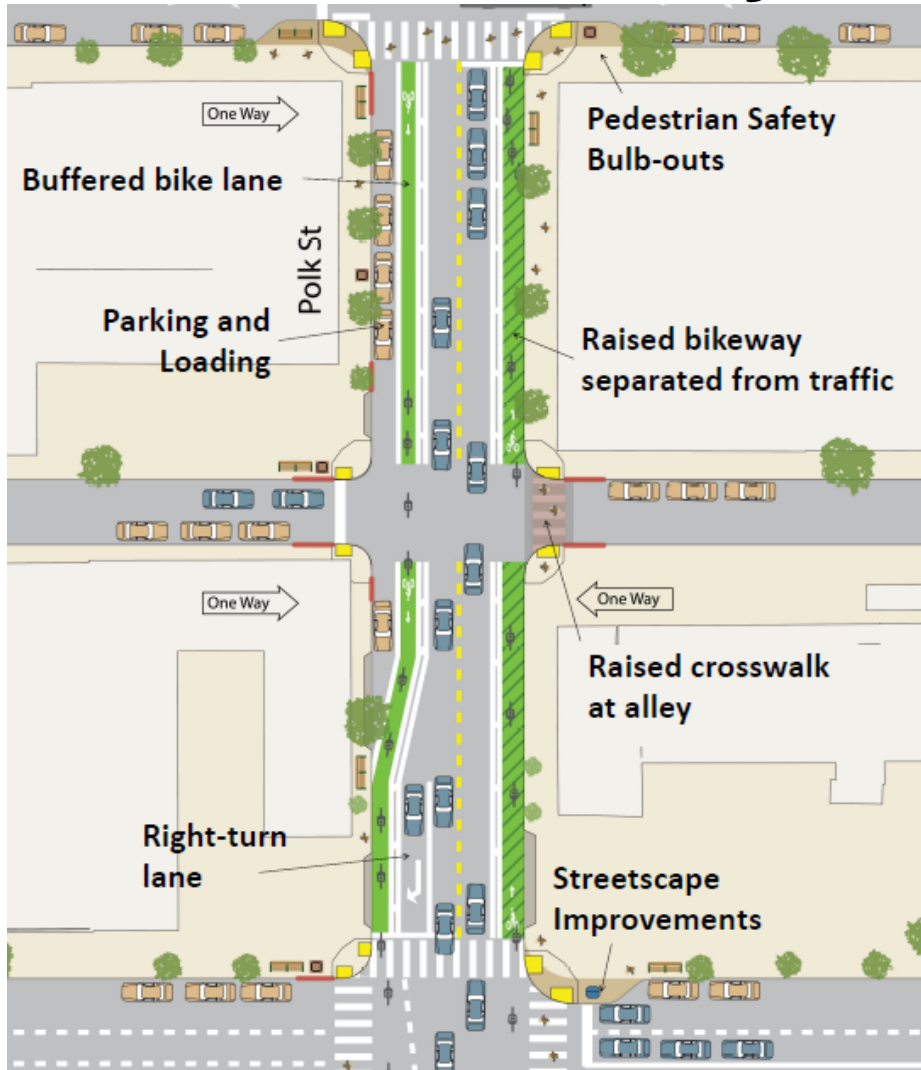


Transit Improvements

- Bus stop consolidation (7 stops)
- Bus stop relocation to far side (4 stops)
- Bus bulbs (3)
- Left and right turn lanes (9 locations)



Bikeway Improvements

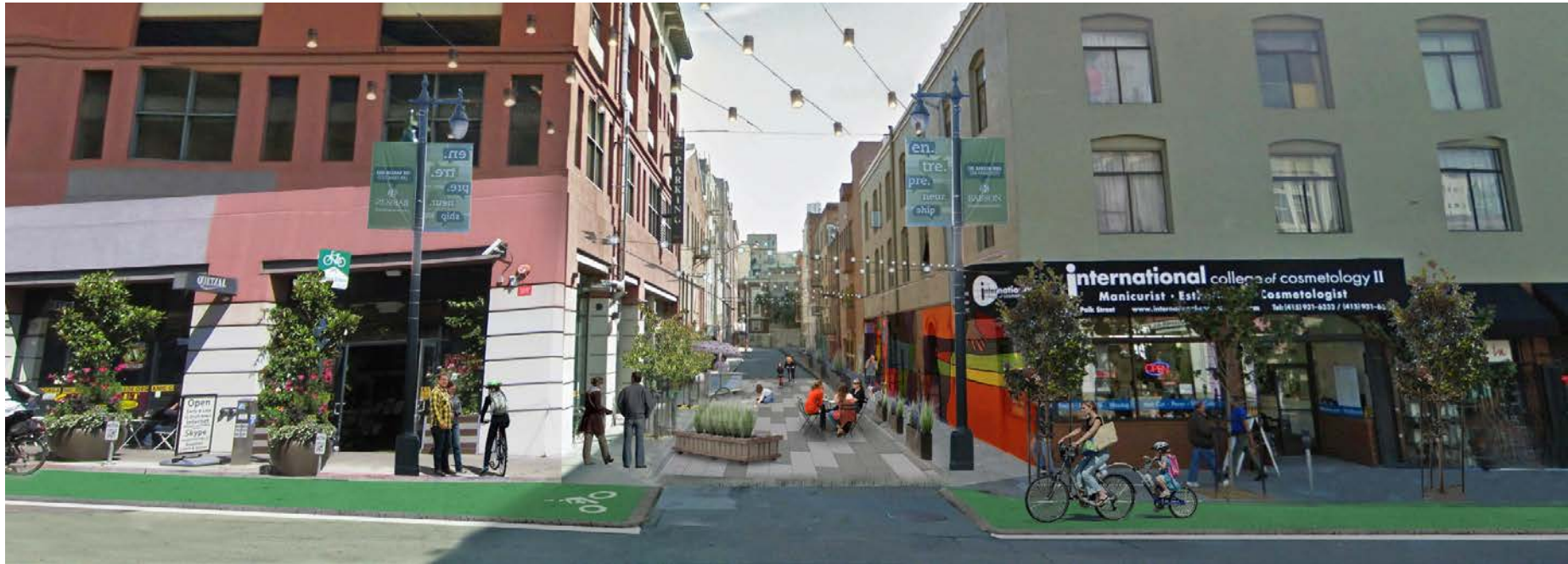


McAllister to Pine



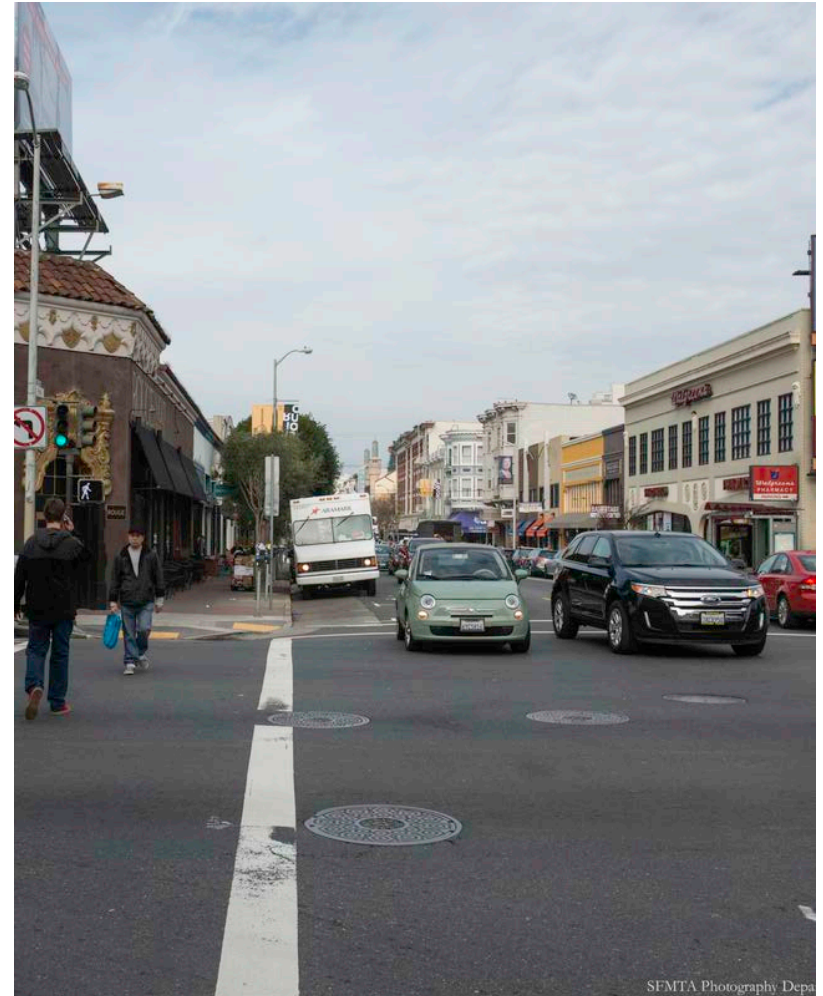
Pine to Union

Public Realm Improvements



Parking and Driving

- Retain about 70% of parking on Polk Street and 92% of parking within a one block radius
- Improve commercial loading along the whole corridor
- Provide more short-term parking
- Open up more hourly parking spaces at the SFMTA garage on Polk/Bush
- Add 30 accessible parking spaces



Project Evaluation

1 Year Post-Project	2-5 Years Post-Project
Transit Efficiency	Collisions
Bicycle Counts	Economic Impacts
Traffic Counts	
Commercial Loading	
Illegal Parking	
Intercept Surveys	



Project Timeline

Planning: 2012-2014

Environmental Review:

- 2014 (complete)

Detailed Design:

- Start Fall 2014
- Finish (est) Fall 2015

Construction:

- Start: (est) Summer 2016



Early Implementation

- Temporary bulbouts at high-crash locations
- “Daylighting” red visibility curbs
- Southbound bike lane
- Bicycle safety improvements at intersections
- Commercial loading improvements

