



**SFMTA**

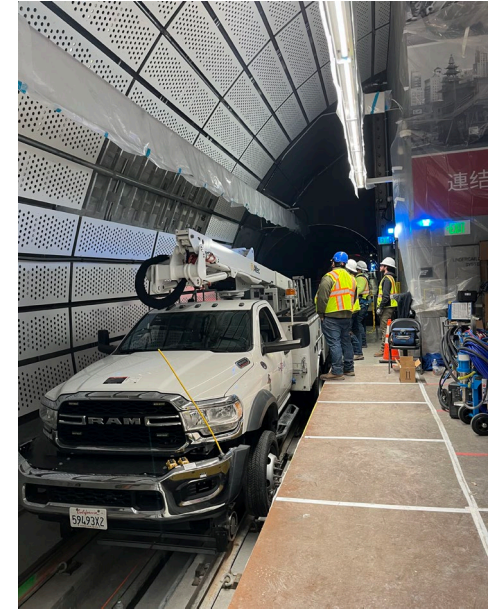
# **Streets Quarterly Update January to March 2025**

**SFMTA Board of Directors**

**April 1, 2025**

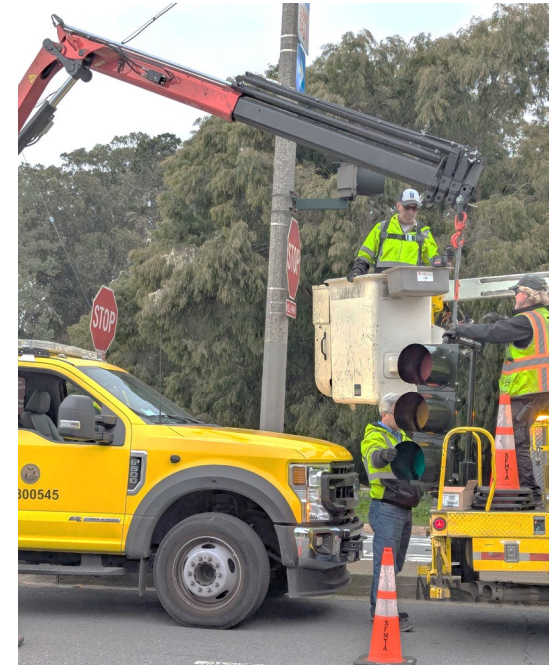
# Central Subway Water Mitigation

- Completed grouting of cavern and back of house areas successfully
- Finalizing work at the elevator near fare gates
- Evaluation in 4-6 weeks to see if additional work is needed



# Great Highway Closure

- Since January, three new traffic signals have been installed to manage rerouted traffic
  - 41st & Lincoln,
  - Sloat & Skyline
  - Skyline & Great Highway
- Collaborated with Public Works to fully repave Sunset Boulevard, to improve driving conditions
- Reconfigured intersections
  - Lincoln & Great Highway
  - Sloat & Great Highway
- New bike connections from Golden Gate Park and Sloat to Great Highway



# Great Highway Closure Next Steps

- Actively monitoring traffic on Lincoln, Sunset and Sloat, along with residential avenues to identify areas for improvement
  - Adjusting signal timing and signage on detour routes
  - Traffic data collection this spring
- Removing deteriorating signal infrastructure on Great Highway
- Advancing next phase capital improvements
  - Signals at 45th and Lincoln & La Playa at Lincoln
  - Park 'gateway' treatment improvements at Great Highway at Lincoln
  - Improving Zoo driveway access at Sloat/ Great Highway



# Signals Installed

## New Traffic Signals

- 41st Ave & Lincoln Way (Temporary)
- Buchanan St & Golden Gate Ave
- Golden Gate Ave & Octavia St
- Sloat Blvd & Skyline Blvd

## New Pedestrian Countdown Signals

- 19th St. & Folsom St
- 21st St. & Folsom St
- 22nd St. & Folsom St
- 23rd St & Folsom St

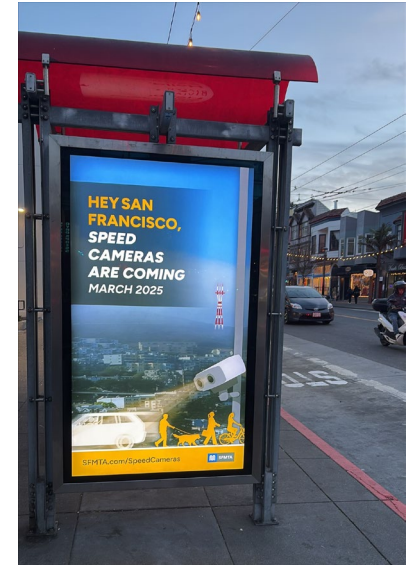
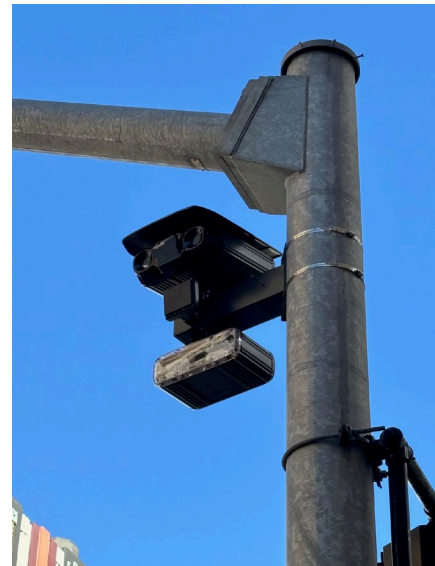
## New Rectangular Rapid Flashing Beacons

- Buchanan St & Fulton St
- Buchanan St & Turk St



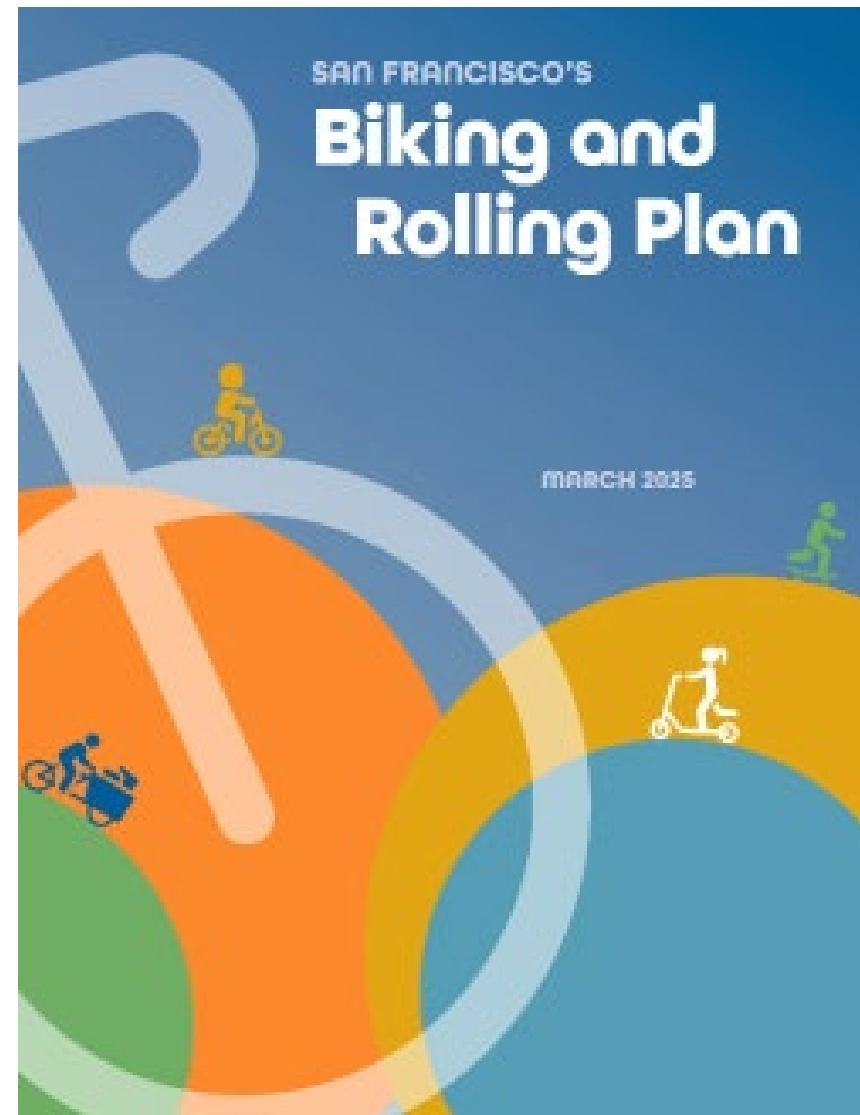
# Speed Safety Cameras Launch & Next Steps

- First city in California to install speed cameras under five-year pilot program
- Kicked off public education campaign in January across the city on billboards, Muni bus shelters, and an extensive digital ad campaign
- Installed all cameras with the first batch going live on March 20th across the city
- Additional cameras will be activated in the next several months
- Data collection next



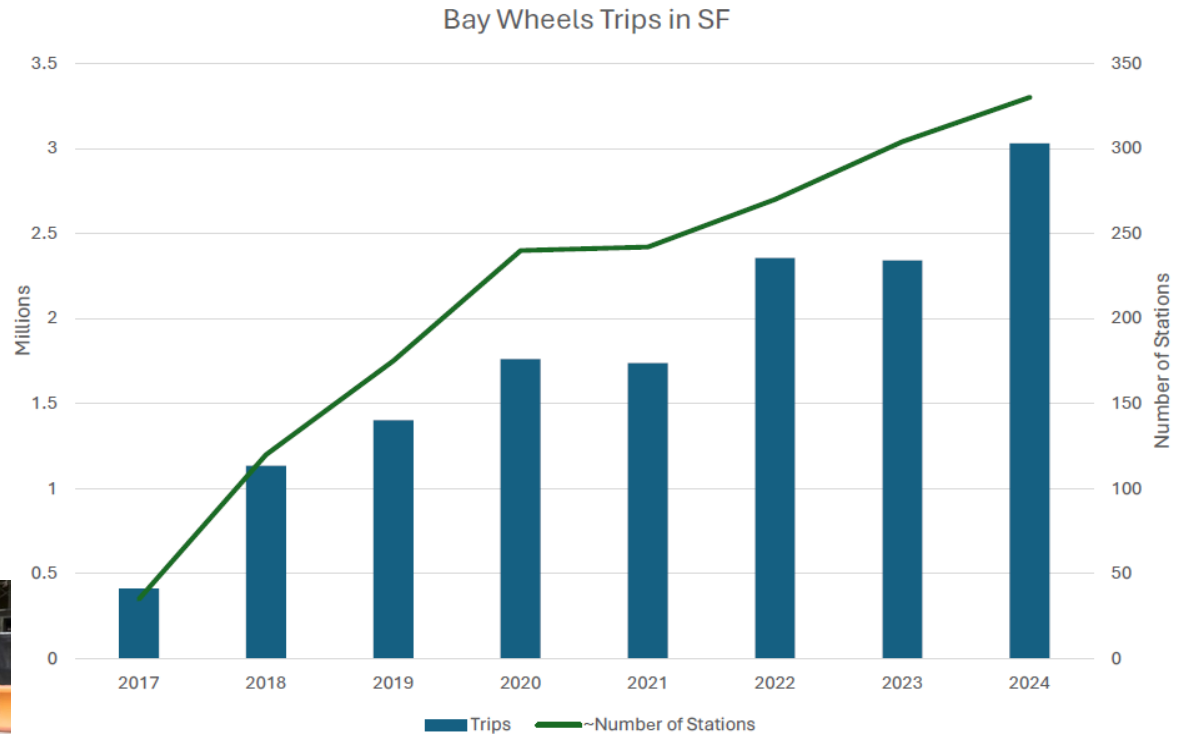
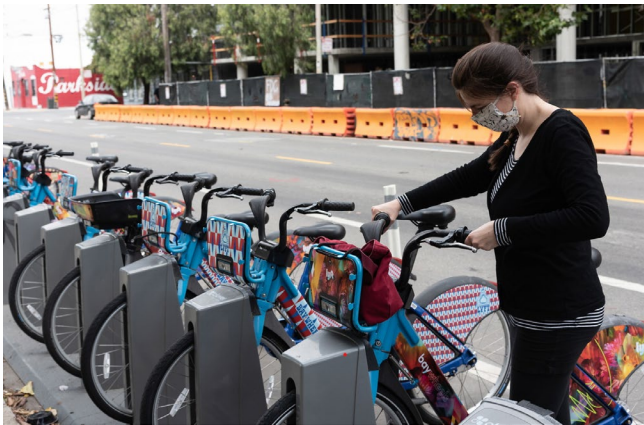
# Biking and Rolling Plan Adoption

- Long-range roadmap toward a network that ensures every San Franciscan is within ¼ mile of an all-ages-and-abilities bikeway
- Prioritized upgrading existing routes, closing network gaps, and enhancing access to schools and key destinations in first projects
- Focused on engagement and co-developing projects in neighborhoods where past projects have been particularly divisive with historically marginalized communities
- Projects to be moving forward over the next year or so are identified in the CIP



# Bikeshare

- More than 330 stations citywide
- 3,000 total bikes – pedal bikes, eBikes and hybrid
- Working with the Metropolitan Transportation Commission (MTC) on future of bikeshare



Served a record 3 million trips in 2024



# Slow Streets Recently Completed

Traffic diverter on Minnesota at 19th St



New, more robust paddle in testing (Lyon St) Street murals on Lyon, other Slow Streets

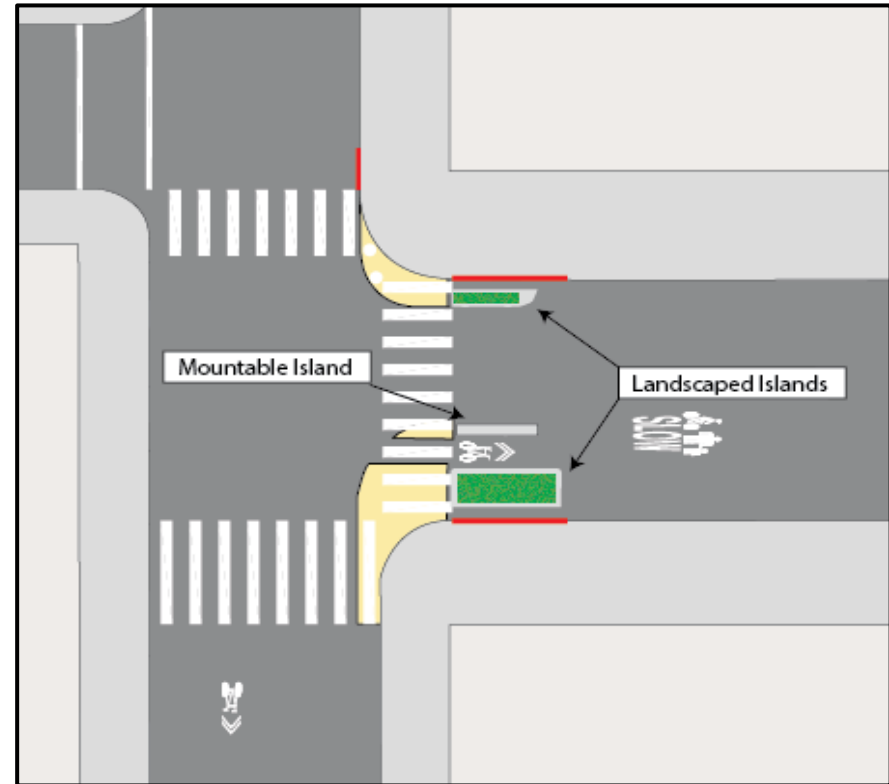


# Slow Street Next Steps

Murals on Sanchez (illustrative example)



Landscaped bulb islands (Sanchez at 30th)



# Slow Street Next Steps

Traffic calming + Painted Safety Zones  
(20<sup>th</sup> Street)



Diverter upgrades on Page Street  
(Page/Divisadero shown)



# Quick Builds Work Recently Completed

Lake Merced Transit Boarding Islands

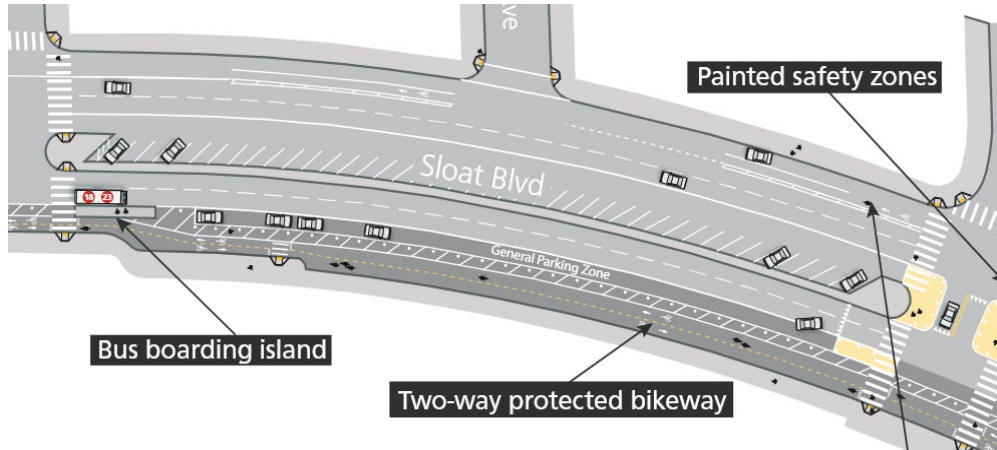


Beale Street at Howard Street



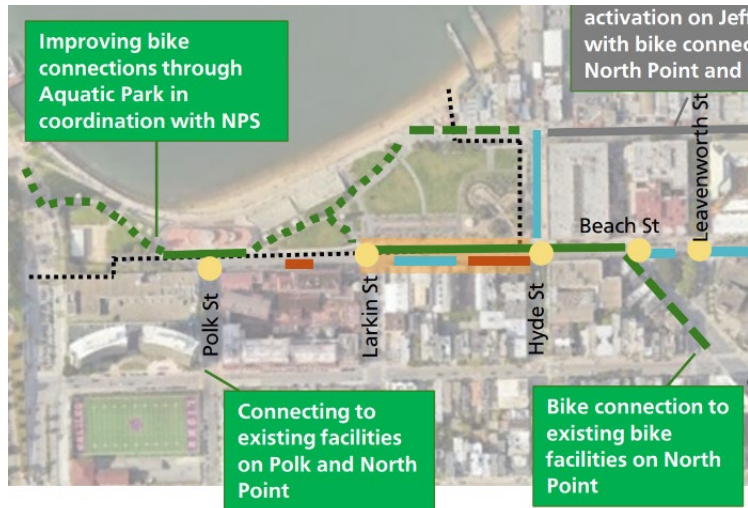
7<sup>th</sup>/Folsom  
Bike Signal

# Quick Builds – Next Steps



Sloat, Skyline to 47<sup>th</sup>  
(Spring 2025)

Beach, Leavenworth to Van Ness  
(Spring 2025)



Alemany (westbound),  
Ellsworth to Putnam (Spring 2025)



# Valencia Construction Underway



# Streetscape Projects Underway

## Taylor Street wrapping up



## 6<sup>th</sup> Street (Market to Folsom)



## Folsom Streetscape (2<sup>nd</sup> to 11<sup>th</sup>)



## Beale St Streetscape (Tehama to Folsom)

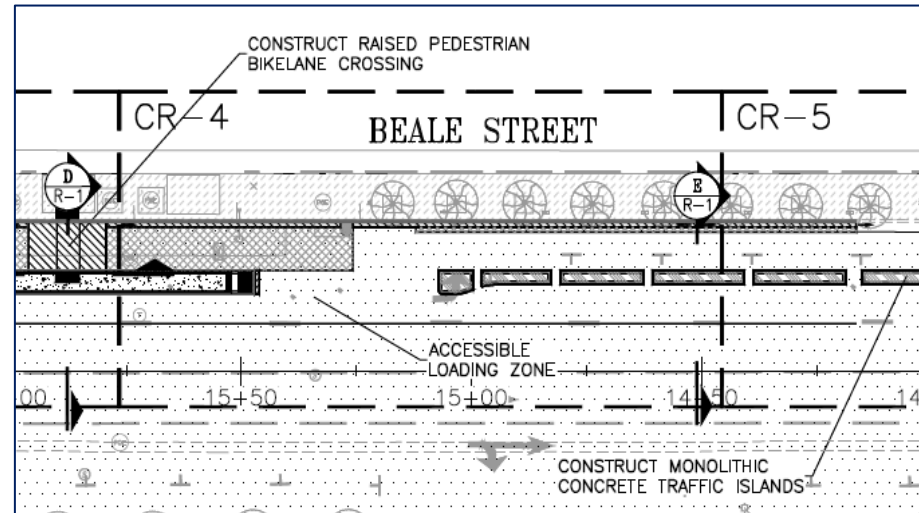


# Streetscape Projects Starting Construction

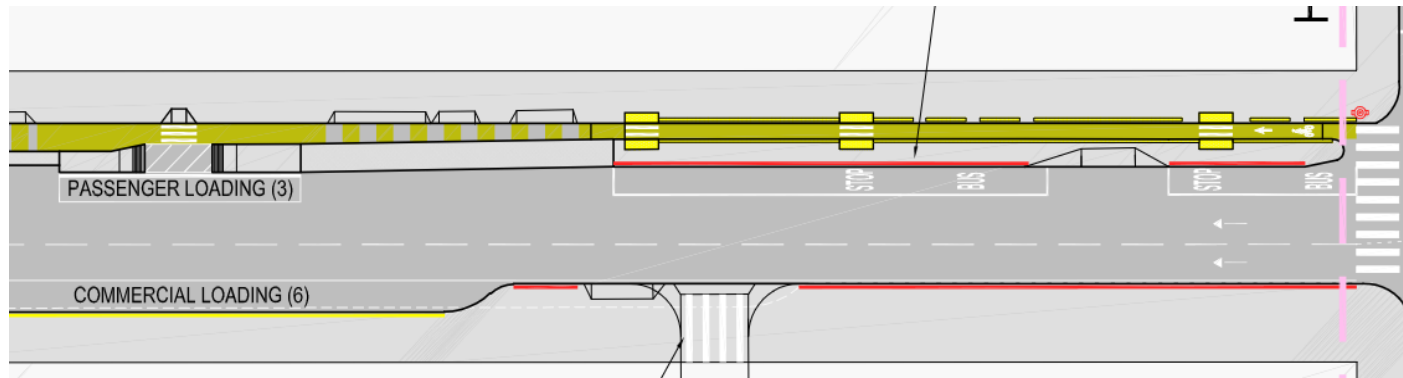
13<sup>th</sup> Street (Folsom to Duboce)



Beale Phase 1  
(Market to Howard)



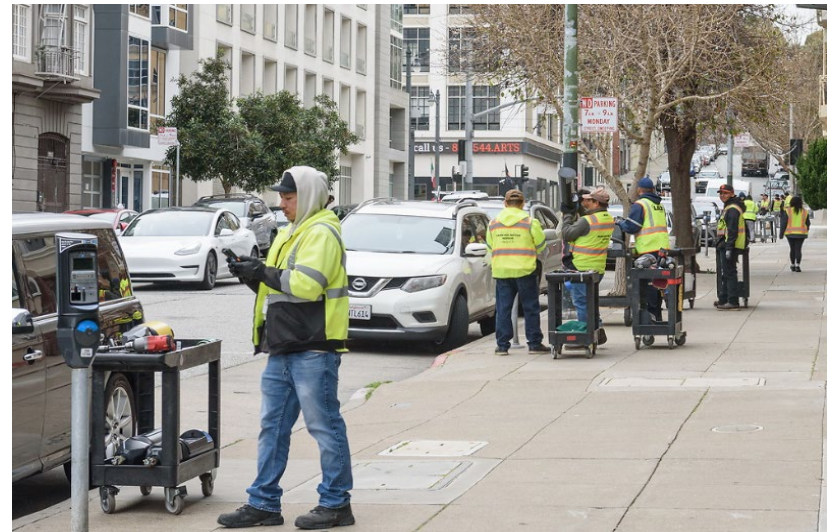
Main Street  
(Howard to Market)





# Meter Modernization Project Completed

- Completed three-year project of replacing all parking meters in the City.
- Almost three thousands single-space meters were replaced during the last quarter.
- Recycled old meter hardware in most environmentally friendly manner.
- New meters are much easier for public to use and for SFMTA to maintain.
- All new meters operate with solar panels and rechargeable batteries.
- Finished replacing all the meter housings coin vault doors that have been in use since 2002.



# Loading Zones Rightsizing

- In the last year +
  - Reduced the backlog from 766 to 39
  - Collected payment for 478 zones (66%) and rescinded 249 (34%)
  - Collected about \$550,000 in previously unpaid fees
  - Moved about 450 spaces to general parking by rescinding unused loading zones



# Vision Zero: Our Commitment to Street Safety

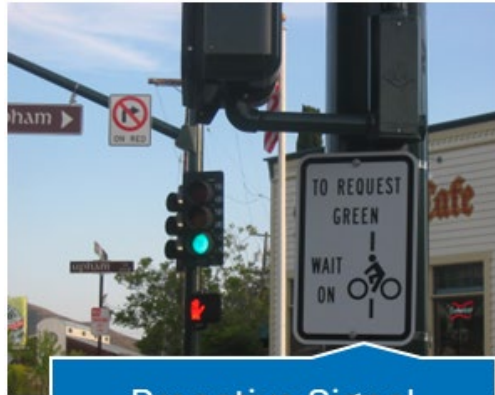
- Renewed commitment to Vision Zero, focusing on three core ideas:
  - Design and enforce safe speeds for people walking, biking and driving
  - Provide protection for the most vulnerable road users
  - Ensure that transit, walking, biking, and driving are safe, predictable, and comfortable



Quick-Build Program



Left Turn Safety



Proactive Signal Changes



Reduced Speed Limits

# Thank you