



SFMTA

Building Progress: Potrero Yard Neighborhood Working Group

October 2024 | Meeting #46



BUILDING PROGRESS

Detailed Agenda

1. Member & SFMTA Announcements — 10 minutes
2. Public Art – 15 minutes
3. Working Group Update – 15 minutes
4. Community Engagement Update – 10 minutes
5. Project Update – 10 minutes
6. Bus Yard Updates – 10 minutes
7. Next Steps — 5 minutes
8. Public comment - members of the public who wish to participate in the meeting virtually will be placed on mute, regardless of joining via video or by phone, until the Public Comment section.





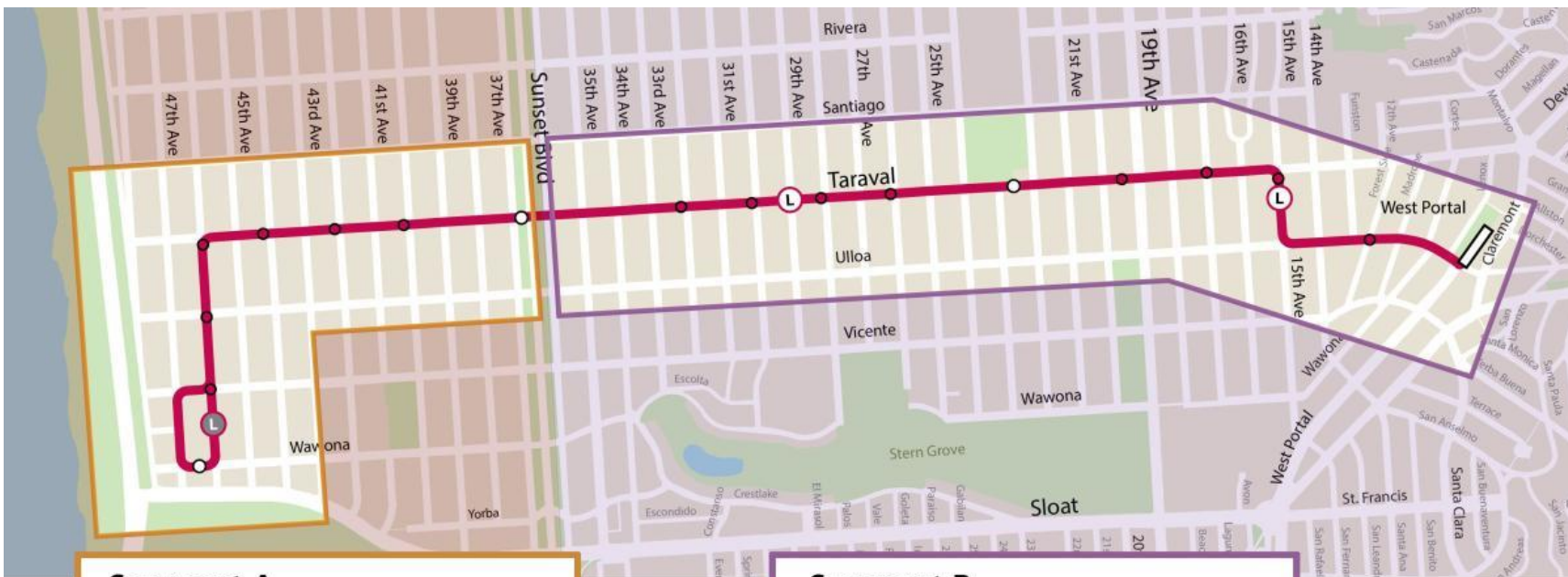
Member and SFMTA Announcements

John Angelico, SFMTA



BUILDING PROGRESS

SFMTA Announcement: L Taraval Trains are Back



Segment A

SF Zoo to Sunset Blvd

Construction 2019 - July 2021

Completed on schedule

Segment B

Sunset Blvd to West Portal

Construction January 2022 - Fall 2024

Completed on schedule

- On Saturday, Sep. 28, L Taraval trains resumed service between Embarcadero Station and SF Zoo. You will once again be able to enjoy a **one-seat ride from downtown to the beach.**
- Trains are scheduled to arrive every 10 minutes on weekdays and every 12 minutes on weekends.
- Board trains at the platform or street. L Bus service is discontinued.



Announcements: Working Group

Working Group members please share upcoming events or activities with the Working Group, SFMTA, and PNC.



Public Art Update

Jackie von Treskow, SFAC




Potrero Yard Modernization Public Art Program
Artist Selection Update | Potrero Yard Neighborhood Working Group | Tuesday, October 8, 2024



17th Street Bus Ramp
Artist Conceptual Design Proposals


CELESTE BYERS & SPENCER KEETON CUNNINGHAM
INTEGRATED GLASS ARTWORK PROPOSAL FOR THE POTRERO YARD BUS RAMP ON 17th STREET




ARTWORK DESCRIPTION

The design is dedicated to the city's MUNI employees, and the vehicles and legacy of its public transportation. At the mural's center is a trolley driven by a retired local legend ("Nate"), of whom we learned through a driver union administrator. Left of center is a MUNI map of Potrero Yard, the map and its interconnected bus lines evoke constellations in the night sky above, and the interconnectiveness of the city below - maintained by two hard-working MUNI mechanics. A yellow Flicker flies into the night sky from a pre-colonial Bay Area landscape (far left), featuring contemporary Ohlone rowing Tule boats, a precursor to MUNI's legacy. They row in the shadow of a gigantic Matigya Poppy and under a patterned sky, inspired by the contemporary traditional basket weaving of Linda Yamane. To the right of the center, the mural celebrates the strength of San Francisco's early female bus drivers inspired by a historical photo display near Potrero Yard's drivers' break room. Second from right is a bus shelter, before which a Douglas Iris grows, connecting seamlessly to the inside of a bus featuring an Ohlone youth wearing traditional regalia, honoring their continued presence and stewardship of the land. On the far right lies a cityscape with a setting sun inspired by the MUNI Mechanica's union logo. Youth and adult feet passes connect the different generations that ride MUNI. Finally, elements celebrating native flora, native-inspired patterns, historical MUNI transfers through the decades, "legacy drivers," and other historical MUNI contributors can be seen interwoven throughout the mural.


SYMBOLS: ABSTRACTED ELEMENTS



SYMBOLS: DRAWN ELEMENTS



ELEVATION



Celeste Byers & Spencer Keeton Cunningham
Migration

Integrated Glass Artwork Proposal for the Potrero Yard Bus Ramp on 17th Street



This design is dedicated to the city's MUNI employees, and the vehicles and legacy of its public transportation. At the mural's center is a trolley driven by a retired local legend ("Nate"), of whom we learned through a driver union administrator. Left of center is a MUNI map of Potrero Yard, the map and its interconnected bus lines evoke constellations in the night sky above, and the interconnectiveness of the city below - maintained by two hard-working MUNI mechanics. A yellow Flicker flies into the night sky from a pre-colonial Bay Area landscape (far left), featuring contemporary Ohlone rowing Tule boats, a precursor to MUNI's legacy. They row in the shadow of a gigantic Matigya Poppy and under a patterned sky, inspired by the contemporary traditional basket weaving of Linda Yamane. To the right of the center, the mural celebrates the strength of San Francisco's early female bus drivers inspired by a historical photo display near Potrero Yard's drivers' break room. Second from right is a bus shelter, before which a Douglas Iris grows, connecting seamlessly to the inside of a bus featuring an Ohlone youth wearing traditional regalia, honoring their continued presence and stewardship of the land. On the far right lies a cityscape with a setting sun inspired by the MUNI Mechanica's union logo. Youth and adult feet passes connect the different generations that ride MUNI. Finally, elements celebrating native flora, native-inspired patterns, historical MUNI transfers through the decades, "legacy drivers," and other historical MUNI contributors can be seen interwoven throughout the mural.

Precita Eyes Muralists: Susan Cervantes, Fred Alvarado, Monica Magtoto & Eli Lippert.

Precita Eyes Muralists Association
We Move the City

MUNI in Motion
An ode to the routes that raised us in our city by the Bay.
TWIN WALLS MURAL COMPANY Elaine Chu and Marina Perez-Wong

Integrated Glass Artwork Proposal for the Potrero Yard Bus Ramp on 17th Street



In our 20+ decades the city and its modes of transportation have always been reflective of cultural and political change. Our diversity, our collective struggles and triumphs, the celebrations we share and the care we have for one another are reflected in a way unlike any other part of the world. We aim to celebrate this connectivity by honoring a woven tapestry of people and places throughout time in San Francisco, starting at Potrero Yard.

Our design needs have led us to begin with an indigenous Ohlone landscape and ending with a trolley bus weaving through a clear sky, a symbol of hope for our future and respect for our past. The flow into modern urban shapes that stretch across our mural are inspired by a platform in an Ohlone basket weaver's Linda Yamane, a friend of the Ohlone Nation.

Our primary goal is to better better elements of this beautiful land we share as well as working on our own personal health and the health of our community. Connection is an important factor in creating lasting change in many cultures, weaving in an act of reciprocity, health and wholeness as a root and connecting bridge of wellbeing, broken connections, the sun, trees, water and by extension the forest and people within them as well as elements in the natural world as small symbols of how our collective energy is woven into the fabric, or in this case fabric, of life.

The heart of this mural is people, an showcase connections between passengers, bus riders, drivers and pedestrians. We celebrate our human landscape as it shifts, highlighting local communities of color and nostalgically recalling San Francisco's of the 1960s up to the present across space and time.

MUNI is not just a mode of transportation for getting there, place to place. It is a portal for moving San Francisco through different times, it can be a place of comfort, a place of friendship, a place to rest and reflect, or a place of entertainment. One can take a bus that begins Downtown and ends in the Marina District, having passed by some of the iconic buildings in San Francisco and meeting someone who claims to have "dined with Socrates" in "The Campanile has an unforgettable MUNI story and we are all connected through these genes. MUNI is inseparable from San Francisco and the paths it weaves through us. Its history, our connections, art, and history. Our intention for this design is to capture the spirit of San Francisco, composing a visual narrative that celebrates our past, embraces our present, and believes in towards a brighter future.

We were inspired by many artists including Diego Rivera, David Alfaro Siqueiros, Jorge González Cambrinos, Dr. Rosa Anguiano who grew up in San Francisco and was one of the first Black women to be a MUNI conductor and the muralist Gary Meigs, Cheryl Grimes and Barbara Cameron who painted "When the Sun Was on the Mountains" on the second location of the American Indian Cultural Center (AICC) on 16th and Valencia Streets.

Twin Walls Mural Company
Muni in Motion



POTRERO YARD MODERNIZATION PROJECT | 17th STREET BUS RAMP
ARTIST REVIEW PANEL TWO SUMMARY

MEETING DATE

August 28, 2024

VOTING SELECTION PANELISTS

Chris Jauregui, Vice President, Plenary Americas (shared vote with Yancey Clayton)
Fátima Ramirez, Executive Director, Acción Latina
John Angelico, Public Information Officer, SFMTA (shared vote with Kerstin Magary)
Jolene Yee, Community Representative, Friends of Franklin Square Park
Kerstin Magary, Deputy Program Manager, SFMTA (shared vote with John Angelico)
Mary Chou, Civic Art Collection and Public Art Director, SFAC
Mary Travis-Allen, Community Representative, American Indian Cultural District
Rhiannon Evans MacFadyen, Curator, Artist, Consultant
Trisha Lagaso Goldberg, Independent Curator
Yancey Clayton, Principal/Associate Director, Arcadis IBI Group (shared vote with Chris Jauregui)

PROCESS

Three artist finalists presented their proposals for the Potrero Yard Modernization 17th Street Bus Ramp Public Art Project. The Artist Review Panel discussed the finalists' proposals and scored each artist on the following criteria (1= low score):

Artistic Merit (1-10)
Relevant Skills and Experience (1-5)
Meets Project and Civic Art Collection Goals (1-10)
Appropriate to Site (1-5)

RESULTS

Twin Walls Mural Company	253
Celeste Byers & Spencer Keeton Cunningham	205
Precita Eyes Muralist Association	203

Artist Review Panel Two Composition

San Francisco Arts Commission

Mary Chou, Director of Public Art Program and Civic Art Collection

SFMTA Representatives

John Angelico, Public Information Officer, Building Progress Program

*Kerstin Magary, Section Director, CSO Facilities and Real Property Management,
Deputy Building Progress Program Manager*

Design Team Representatives

Yancey Clayton, Principal/Associate Director, Arcadis IBI Group

Chris Jauregui, Vice President, Plenary Americas

Arts Professionals

Rhiannon Evans MacFadyen, Curator, Artist, Consultant

Trisha Lagaso Goldberg, Artist and Independent Curator

Fátima Ramirez, Executive Director, Acción Latina

Community Representatives

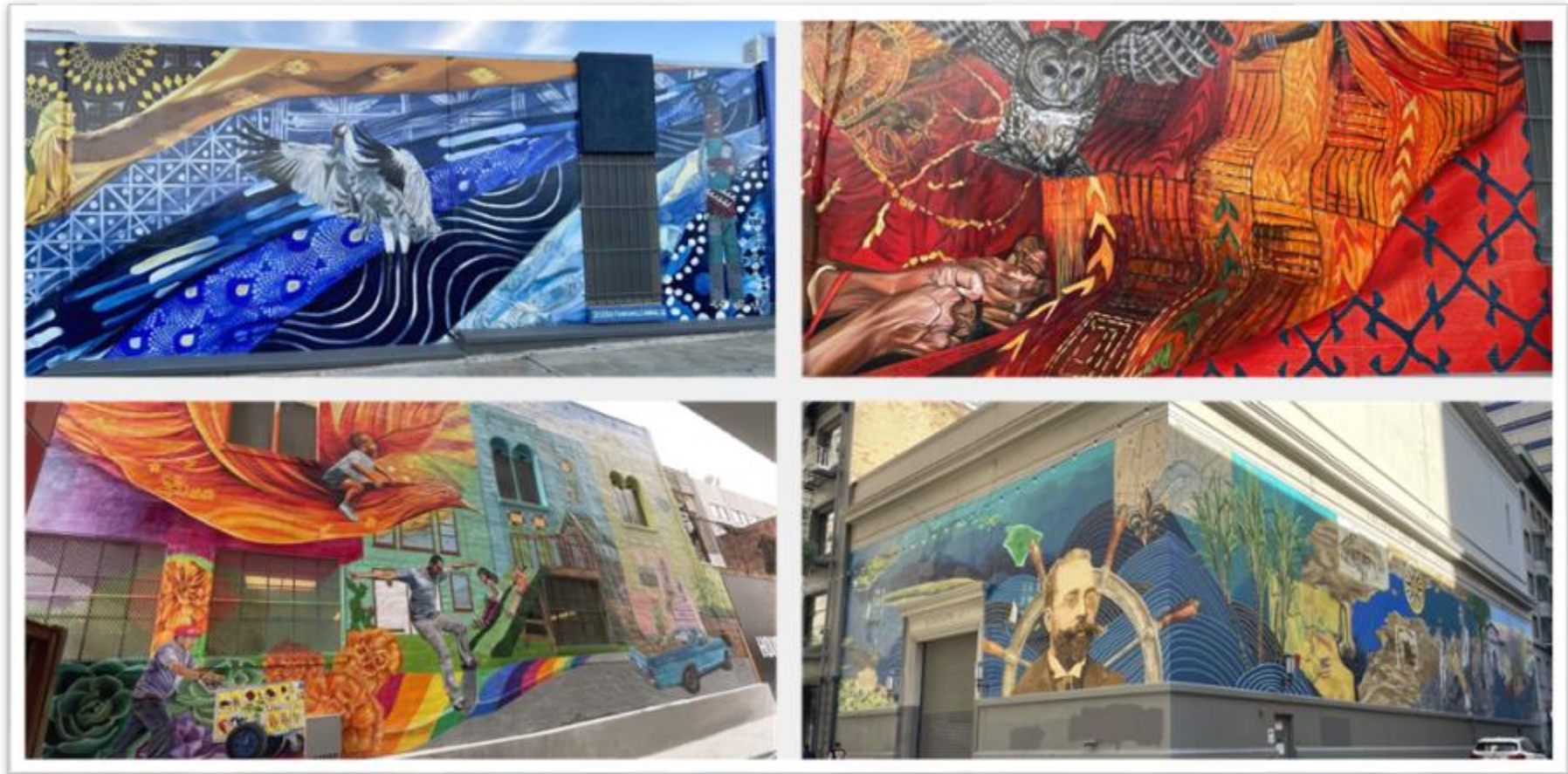
Mary Travis-Allen, Potrero Neighborhood Working Group, American Indian Cultural District

Jolene Yee, Potrero Neighborhood Working Group, Friends of Franklin Square Park

Twin Walls Mural Company



Twin Walls Mural Company (Elaine Chu and Marina Perez-Wong) is committed to addressing the perspectives of community, from human rights, highlighting injustices through the lens of oppressed people and revealing ancestral traumas to celebrating life through culture and color. Manifesting health, healing and connection, TWMC also encourages environmental stewardship.



MUNI in Motion

An ode to the routes that raised us in our city by the Bay.

TWIN WALLS MURAL COMPANY Elaine Chu and Marina Perez-Wong

Integrated Glass Artwork Proposal for the Potrero Yard Bus Ramp on 17th Street



In our 7x7 universe the city and its modes of transportation have always been reflective of cultural and political changes. Our diversity, our collective struggles and triumphs, the celebrations we share and the care we have for one another are valued in a way unlike any other part of the world. We aim to celebrate this connectivity by illustrating a woven tapestry of people and places throughout time in San Francisco, starting at Potrero Division.

Our design reads from right to left beginning with an indigenous Yelamu Ramaytush Ohlone landscape and ending with native birds soaring through a clear sky, a symbol of hope for our future and respect for our past. The five criss-cross pattern shapes that stretch across our mural are inspired by a pattern in an Ohlone basket woven by Linda Yemane, a descendent of the Ohlone tribe.

Our primary goal is to foster better stewards of this beautiful land we share as well as working on our own personal health and the healing of our communities. Connection is an important factor in creating lasting change. In many cultures weaving is an art of recognizing health and wholeness as a root and overcoming blockages of seemingly broken connections. We use lines/ cables and by extension the buses and people within them as well as elements in the natural world as visual symbols of how our collective energy is woven into the fabric, or in this case basket, of life.

The color palate we chose consists of greens, earth tones, reds and orange hues. The greens serve to channel sustainability and healing energy. Earth tones depict the roots that provide stability and balance. The reds and oranges are a tribute to two colors most associated with our unique city and historic SF MUNI.

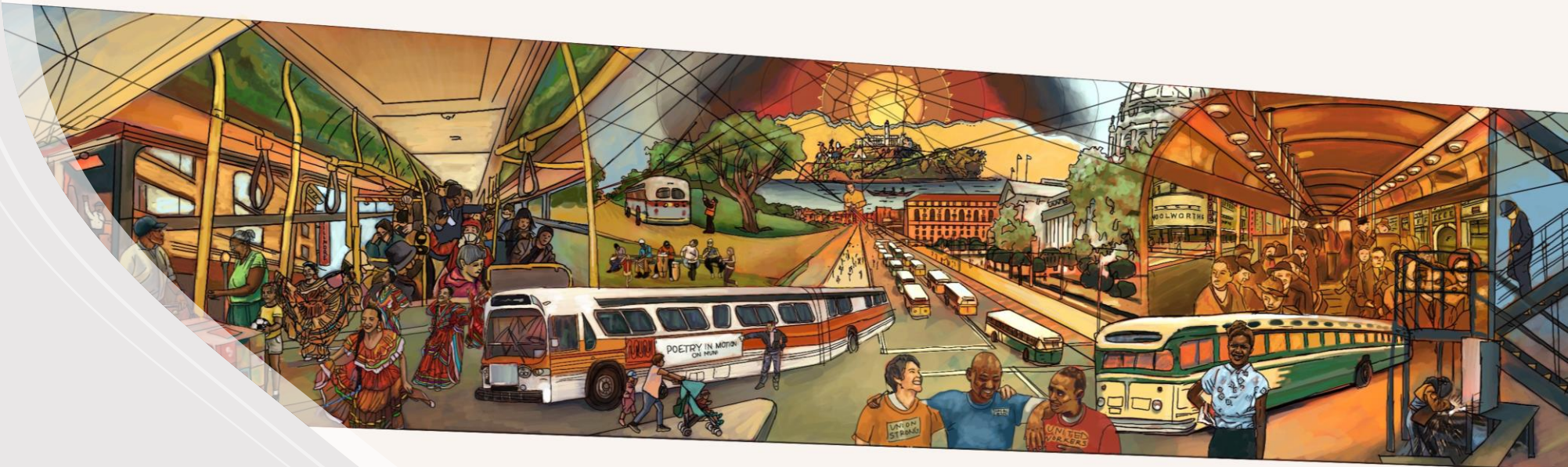
The heart of this mural is people; we showcase connections between passengers, bus riders, drivers and pedestrians. We celebrate our home landscape as it shifts, highlighting local communities of today and nostalgically recalling San Francisco of the 1940s up to the present across space and time.

MUNI is not just a mode of transportation for getting from place to place. It is a portal for viewing San Francisco through different lenses. It can be a place of comfort, a place of friendship, a place to rest and reflect, or a place of entertainment. One can take a bus that begins Downtown and ends in the Marina District, having passed by some of the oldest buildings in San Francisco and meeting someone who claims to have "jammed with Santana in '75." Everyone has an unforgettable MUNI story and we are all connected through these gems. MUNI is inseparable from San Francisco and the paths it weaves through on its routes unite communities, art, and history. Our intention for this design is to capture the spirit of San Francisco, composing a visual narrative that celebrates our past, embraces our present, and beckons us towards a brighter future.



We were inspired by many artists including Diego Rivera, David Alfaro Siqueiros, Jorge Gonzalez Camarena, Dr. Maya Angelou who grew up in San Francisco and was one of the first black women to be a Muni conductor and the muralists Gary McGill, Sheryl Graves and Barbara Cameron who painted "When the Buffalo Were on the Mountains" on the second location of the American Indian Cultural Center (AICC) on 16th and Valencia Streets.









Potrero Yard Modernization Public Art Project
17th Street Bus Ramp Integrated Glass Artwork
Recommended Artist + Proposal
Twin Walls Mural Company | *Muni in Motion*



Potrero Yard Modernization Public Art Project
Mariposa Stairwell Integrated Glass Artwork
Recommended Artist + Proposal



Mariposa Stairwell
Artist Conceptual Design Proposals

Hogar Integrated Glass Artwork for Potrero Yard Stairwell on Mariposa or York Street

THE STORY
The concept is inspired by Adal de Vela (1942) sculptures from the Central Mexican states of Mexico and Morelos. These clay sculptures feature brightly painted tree trunks that depicting people, animals and flowers. They suggest images of life in small towns, biblical scenes, or deeply cultural representations of work. In this case, the tree represents the Mission District and the larger San Francisco community. It represents the idea of home, hence the title Hogar (Home).

The Adal imagery which is familiar Mexican artwork that resonates with many of the Latin American cultures represented in the Mission District. While primarily associated by a colorful and vibrant traditional image, it is certainly also a tool to the Mission's beautiful and strong Latino heritage and identity.

The vivid, natural imagery speaks to Muni's mission of providing clean, more environmentally friendly public transportation for our community.

SYMMETRY
The structure of the tree features a symmetrical composition. This reinforces an inherent structure hierarchy. The birds, flowers, animals and objects, representing disorder and chaos, the central of existing before the tree from these concepts of order and disorder speaks to the idea that our home, our community, and the extension Muni, is in a constant flow seeking to create order and harmony amidst the disorder of all hand.

THE FLOWERS
The flowers represent the vibrant colors of the Mission District. The colors of the flowers are inspired by the traditional Mexican folk art of the Mariposa Stairwell.

THE TREE TRUNK
The tree trunk represents the structure of the Mission District. The trunk is made of a dark material, representing the traditional Mexican folk art of the Mariposa Stairwell.

THE BIRDS
The birds represent the vibrant colors of the Mission District. The birds are made of a dark material, representing the traditional Mexican folk art of the Mariposa Stairwell.

THE GOLD
The gold represents the vibrant colors of the Mission District. The gold is made of a dark material, representing the traditional Mexican folk art of the Mariposa Stairwell.

Jet Martinez
Hogar

Potrero Yard Modernization Project: A Transfer to Tomorrow
Artist: Josué Rojas

Transfer to tomorrow is a celebration, a tribute and a prayer for a more responsible tomorrow. This mural invites the viewer to think about the natural world, the city of SF and where—and how—we source our energy and transportation.

Artist Josué Rojas has designed a modern approach to a traditional artform. Embracing the sustainable idea. Sustainability that extends beyond the artwork itself with depictions of wildlife, animals, trees and the natural world. As a reflection of the neighborhood and a tribute throughout all of its work, the artist specifically highlights the working class employees and history of the Muni System. The artist shares both modern and traditional imagery for delivery of bright, fun colors. In addition, abstract patterns and formations are woven into a history of color and flowing motion—a symbol of life. This mural is a celebration of the future for both the neighborhood and the city of San Francisco. It is a tribute to past workers and an honor for future workers and others of Muni.

Transfer to tomorrow is inspired by the history, current and future culture of the environment and transportation innovation. Muni is a vital service, providing equitable access to mobility and is more so a vital lifeline for the city. An abstract form of art to be housed at the site represents a new dawn on the horizon for Muni, this neighborhood and the city of San Francisco. It is a tribute to past workers and an honor for future workers and others of Muni.

The work will be made of hand-made painting, digital art work that will be digitally printed and installed on the brick exterior of the Potrero Yard Modernization Project. The mural proposal is being and digital, the final artwork will be a combination of hand-painted with digital components. The final image will be photographed and will be digitally printed on glass.

In preparing for the design of this piece, artist Josué Rojas speaks to neighbors and stakeholders of the project — Jonathan Corbin, Executive Director of the association of the Mariposa Stairwell, Jorge Diaz, veteran SF Muni worker and union rep, Chris Guadalupe, former Muni worker and union rep, Perla Rodriguez of Q250 Rightwheels and Rodrigo Duran, Executive Director of Central SF — San Francisco's largest outdoor festival.

Sustainable Power:
Hetch Hetchy

A focus on the future & honoring memory

Josué Rojas
A Transfer to Tomorrow

MONDAY ON THE 48
Christopher Burch Integrated Glass Artwork for the Potrero Yard Stairwell on Mariposa or York Street

"Monday on the 48" transcends a bus ride, honoring lives interwoven within this journey. It pays tribute to individuals enriching their neighborhoods despite adversity, celebrating their stories and emphasizing public transportation's integral role in fostering a connected and culturally vibrant San Francisco. This artwork seeks to illuminate unseen yet profound connections between public transportation and cultural resilience, reminding us of the community's power in navigating change.

COMMUNITY ENGAGEMENT
Placeholder images in the mock-up will evolve through deeper community engagement. Collaborating with the Potrero Hill Neighborhood House Organization and the residents of the Potrero Terrace and Annex housing developments will ensure the thoughtful inclusion of residents' photos. Collaboration with indigenous community members, such as Daria Doria and Jorge Guillermo Perez Molina, ensures respectful use of their images and integration of indigenous ceremonial knowledge into the final design.

Christopher Burch
Monday on the 48

Juan R. Fuentes Integrated Glass Artwork for the Potrero Yard Stairwell on Mariposa or York Street

My concept for this glass mural focuses on a young family in the Mission. They are the future Chicanos or Latino children whose families may have migrated to San Francisco in search of a better future. They are on Mission Street possibly celebrating Cinco de Mayo, Carnival, or Día de los Muertos, along with the low-rider community, all a possibility. As a senior artist and grandfather, I'm hoping that when young people in the Mission see this mural and image that they see themselves and it makes them feel proud of their community and culture.

Cultural Symbols
The artwork features a variety of cultural symbols, including a sombrero, a butterfly, and a person. The symbols are set against a dark background with a grid pattern.

Mural References
The artwork is inspired by various mural references, including 'LA MISIÓN' and 'AZTLAN'.

Elevation View
The artwork is shown in an elevation view, highlighting its placement on the stairwell.

Hand-Carved and Printed Glass Tiles
The artwork is made of hand-carved and printed glass tiles.

Potrero Yard Modernization Project
The artwork is part of the Potrero Yard Modernization Project.

Hand-Carved and Printed Glass Tiles
The artwork is made of hand-carved and printed glass tiles.

Juan R. Fuentes
Mariposas en la Misión



POTRERO YARD MODERNIZATION PROJECT | MARIPOSA STAIRWELL
ARTIST REVIEW PANEL TWO SUMMARY

MEETING DATE

August 29, 2024

VOTING SELECTION PANELISTS

Chris Jauregui, Vice President, Plenary Americas (shared vote with Yancey Clayton)
Fátima Ramirez, Executive Director, Acción Latina
John Angelico, Public Information Officer, SFMTA (shared vote with Kerstin Magary)
Jolene Yee, Community Representative, Friends of Franklin Square Park
Kerstin Magary, Deputy Program Manager, SFMTA (shared vote with John Angelico)
Mary Chou, Civic Art Collection and Public Art Director, SFAC
Mary Travis-Allen, Community Representative, American Indian Cultural District
Rhiannon Evans MacFadyen, Curator, Artist, Consultant
Trisha Lagaso Goldberg, Independent Curator
Yancey Clayton, Principal/Associate Director, Arcadis IBI Group (shared vote with Chris Jauregui)

PROCESS

Four artist finalists presented their proposals for the Potrero Yard Modernization Mariposa Stairwell Public Art Project. The Artist Review Panel discussed the finalists' proposals and scored each artist on the following criteria (1= low score):

Artistic Merit (1-10)
Relevant Skills and Experience (1-5)
Meets Project and Civic Art Collection Goals (1-10)
Appropriate to Site (1-5)

RESULTS

Josué Rojas	230
Jet Martinez	225
Juan R. Fuentes	201
Christopher Burch	186

Artist Review Panel Two Composition

San Francisco Arts Commission

Mary Chou, Director of Public Art Program and Civic Art Collection

SFMTA Representatives

John Angelico, Public Information Officer, Building Progress Program

Kerstin Magary, Section Director, CSO Facilities and Real Property Management,

Deputy Building Progress Program Manager

Design Team Representatives

Yancey Clayton, Principal/Associate Director, Arcadis IBI Group

Chris Jauregui, Vice President, Plenary Americas

Arts Professionals

Rhiannon Evans MacFadyen, Curator, Artist, Consultant

Trisha Lagaso Goldberg, Artist and Independent Curator

Fátima Ramirez, Executive Director, Acción Latina

Community Representatives

Mary Travis-Allen, Potrero Neighborhood Working Group, American Indian Cultural District

Jolene Yee, Potrero Neighborhood Working Group, Friends of Franklin Square Park

Josué Rojas



As an artist, educator and Mission native, Josué Rojas has more than 20 years of experience in fine arts, community arts, arts leadership, and bilingual and ethnic media in the San Francisco Bay Area. Throughout his many endeavors, his work and vision have been characterized by a commitment to San Francisco's cherished values of community arts and media, civic engagement, social justice and empowerment for migrant communities and marginalized communities at large.



Potrero Yard Modernization Project: A Transfer to Tomorrow Artist: Josué Rojas

Transfer to tomorrow is a site-specific tribute to the SF Muni workers, the East Mission Neighborhood — past present and future community and the state of the art transportation, housing and educational activities that will take place at the site. The new muni yard and housing will take shape in the context of the rich cultural & historical space that is San Francisco. In San Francisco, we hold a strong tradition of creative culture-bearing and art making. At the same time we are on the cutting edge of technology, innovation in sustainable green practices and the arts.

Transfer to tomorrow: is a celebration, a tribute and a prayer for a more responsible tomorrow.

This mural invites the viewer to think about the natural world, the city of SF and where —and how— we source our energy and transportation.

Artist Josué Rojas has designed a modern approach to a traditional artform. Embarking from the Salvadoran Folk Tapestry in the La Palma style, the artwork is filled with depictions of wildlife, animals, buses and the natural world. As a native of this neighborhood and a Muni rider throughout all of his youth, the artist specifically highlights the working class employees and ridership of the Muni System. The artist utilizes both realistic and posterized imagery for delivery of bright, fun colors. In addition, abstract patterns and formations are woven into a tapestry of color and flowing rainbow — a symbol of hope. This piece is an expression of joy, sure to both tap into nostalgia and inspire young people to know more about their own cultural and natural roots, including the natural history of San Francisco and the Bay Area.

Transfer to tomorrow is inspired by the history, current and future culture of the environment and transportation innovation. Muni is a vital service, providing equitable access to mobility and is seen as a vital lifeline for the city. An all-electric fleet of buses to be housed at the site represents a new dawn on the horizon for Muni, this neighborhood and the city of San Francisco — it is a tribute to past workers and an honor for future workers and riders of Muni.

The work will be made of hand-made painting, digital artwork that will be digitally printed/ manufactured in glass and installed on the South entryway of the Potrero Modernization Yard. The mural proposal is analog and digital, the final artwork will be a combination of hand-painted with digital components. The final image will be photographed and will be digitally printed on glass.

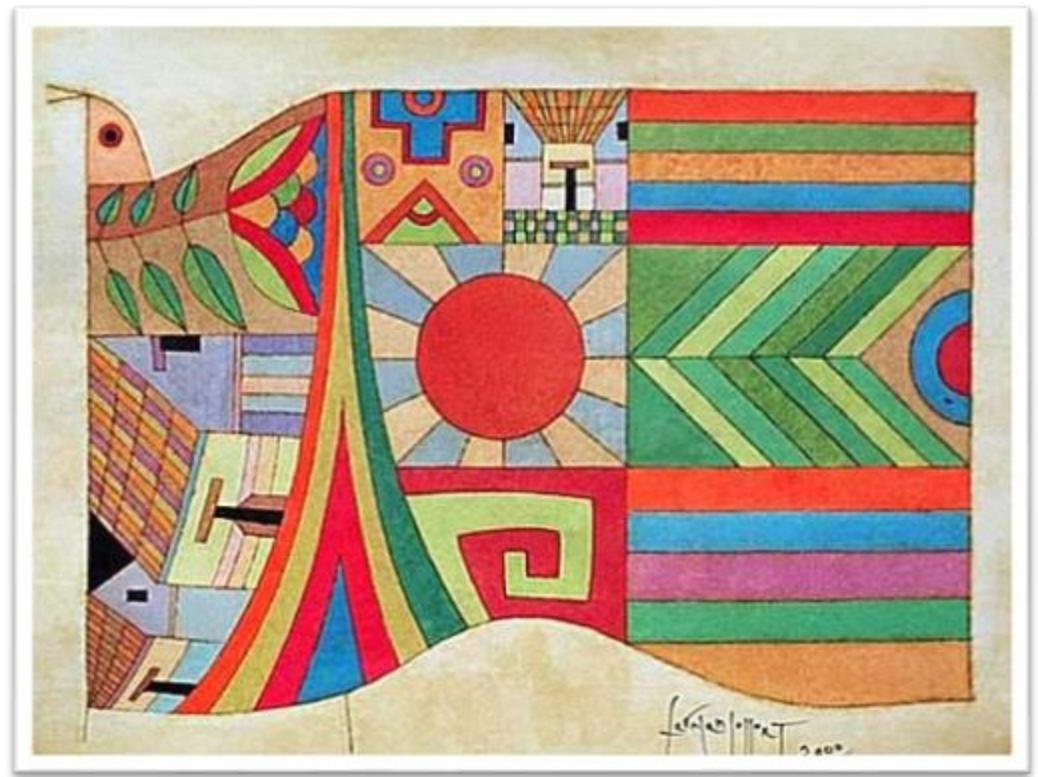
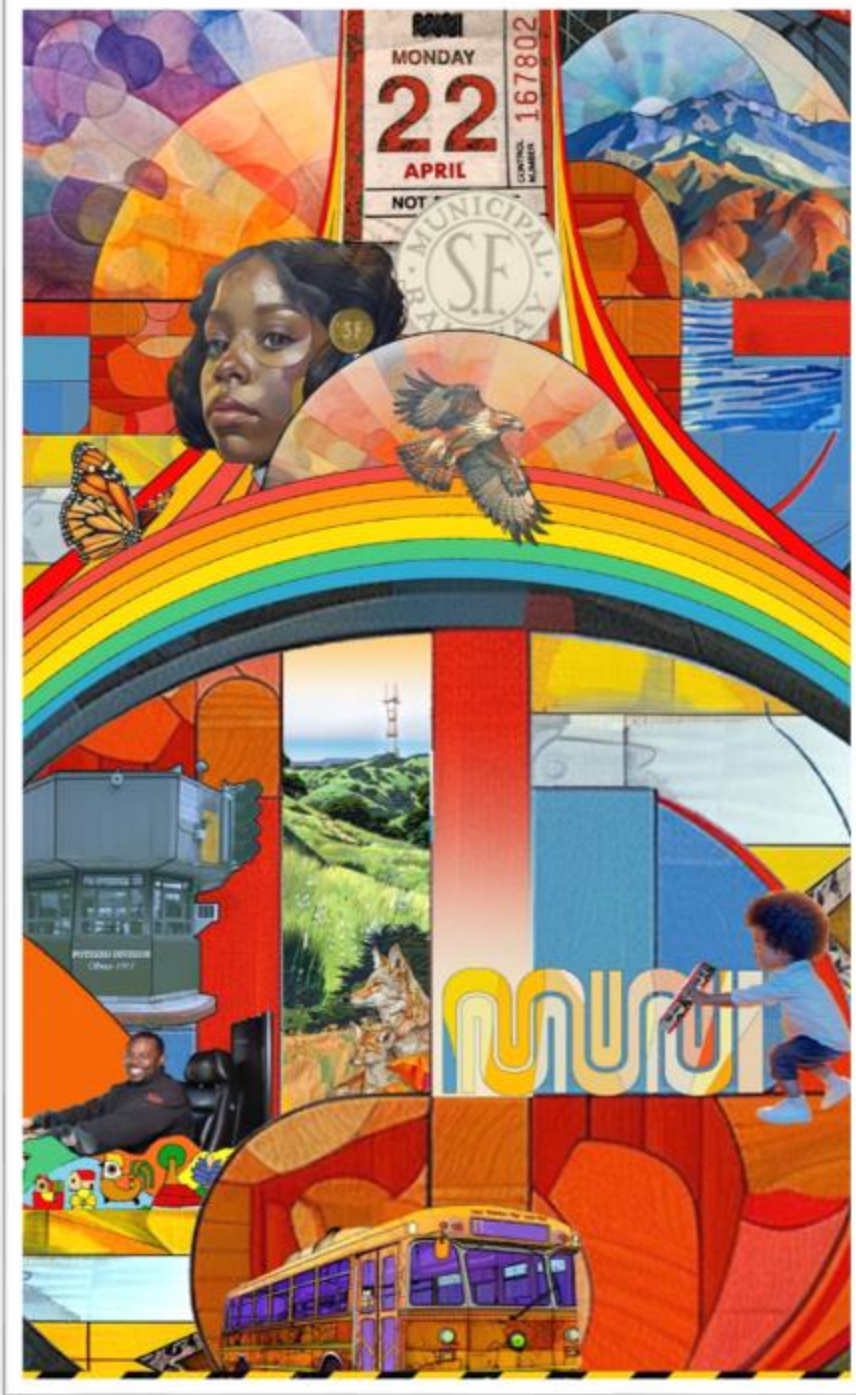
In preparing for the design of this piece, artist Josué Rojas spoke to neighbors and stakeholders of the project — Jonathan Corder, Executive Director of the association of the Rmaytush Ohlone, Jorge Elias, veteran SF Muni worker and union rep, Chris Cuadrado of Horizons unlimited youth services, Pendarvis Harshaw of KQED 'Rightnowish' and Rodrigo Duran, Executive Director of Carnaval SF — San Francisco's largest outdoor festival.



Sustainable Power:
Hetch Hetchy



A focus on the future
& honoring memory



Fernando Llort
Herald of the Dawn





Potrero Yard Modernization Public Art Project
Mariposa Stairwell Integrated Glass Artwork
Recommended Artist + Proposal
Josué Rojas | *A Transfer to Tomorrow*





Potrero Yard Modernization Project Public Art Timeline

Glass Artworks

VAC Approval	September 19
Arts Commission Approval	October 7
Artist Contracting	November 30
Design Development	December 2024 – December 2025

Tile Artwork

Artist Review Panel One	Week of January 13, 2025
Artist Finalist Orientation	Week of January 27
Finalist Proposals Due	March 24
Public Comment Display	April 21 – May 5
Artist Review Panel Two	Week of May 12
VAC Approval	May 21
Art Commission Approval	June 2
Artist Contracting	July 2025

December 2024 – January 2026*

January 2026 – June 2026*

July 2026 – March 2027*

Summer/Fall 2027*

Artwork Design Development phase

Artwork Construction Document phase

Artwork fabrication

Artwork installation

**Contingent on project construction schedule. Subject to change.*



SFMTA

Working Group Updates

Caroline Cabral, SFMTA
Jackson Smith, PNC



BUILDING PROGRESS

New Seat – Youth

- New Youth Seat
 - Students in 9th-12th grade who live and attend school in the city.
 - Priority given to those in ZIP Codes near the project site: 94107, 94110, 94103, and 94124.
- Applications closed on 9/30
 - Outreach: district e-news, on-campus flyers, SF Youth Commission, neighborhood tabling
 - Ten applicants
- Next Steps
 - Interviews the week of October 6
 - Final decisions in time for November onboarding

Potrero Yard Modernization Project

Working Group Youth Seat



Get Involved

- Youth **ages 14-19** or **grades 9-12** living and attending school in San Francisco. Zip codes **94107, 94110, 94103 and 94124** will be prioritized.
- Meetings are held on the second Tuesday of the month from 5:30-7:30 p.m. with dinner provided.

Deadline Extended

Applications are **now due**
Monday, September 30, 2024 at
11:59 p.m. PT.

Questions?

Reach out to Caroline Cabral at
Caroline.Cabral@SFMTA.com

What is it?

A bus yard and community housing project is happening in the Mission. **The Potrero Yard Modernization Project** will replace the obsolete two-story maintenance building and bus yard with a modern bus maintenance and storage garage. The project includes up to 465 units of affordable housing. The Potrero Yard Neighborhood Working Group brings community members, SFMTA staff and the Potrero Neighborhood Collective developer team together to shape public outreach, foster communications and promote community engagement.

The Working Group wants to add a dedicated Youth Seat to incorporate valuable engagement from the perspective of local youth.

Apply



[SFMTA.com/PotreroYardNeighborhood](https://sfmta.com/PotreroYardNeighborhood)





Project Update

Chris Lazaro, SFMTA



BUILDING PROGRESS

Current Legislative Action: PDA Amendment

- Second amendment to the Predevelopment Agreement (PDA) to extend the term of the PDA to **July 31, 2025**
- Increase the maximum Termination Payment by \$5,556,566
 - New total maximum = **\$15,546,566**

Legislative schedule for PDA second amendment

9/24/2024	10/1/2024	10/9/2024	10/22/2024
BOS Legislation Introduction	SFMTA Board	BOS Budget and Finance Committee	Full Board of Supervisors



BUILDING PROGRESS

Future Legislative Action: Project Agreements

Project Agreements will be staggered to match Project phasing.

Bus Facility ① will be built first, scheduled to start construction in 2025

- Timing of form of the agreement: Dec. 2024

Housing and Commercial Components are anticipated to be built in phases

- Each phase is dependent upon available funding and market feasibility.
- Bryant Street Affordable Housing ② construction could start as soon as 2027.
- Podium Housing, ③A ③W located on top of the bus facility, could be built no sooner than 2029, following completion of the bus yard.
- Timing of agreements: Spring 2025



BUILDING PROGRESS

Overall Project Schedule





SFMTA

Community Engagement Update

Myrna Ortiz, PNC



BUILDING PROGRESS

Community Meeting: Saturday, Sept 14, 2024

On Saturday, September 14, the SFMTA and PNC held a Community Walking Tour of the Potrero Yard.



BUILDING PROGRESS

Community Meeting: Saturday, Sept 14, 2024

On Saturday, September 14, the SFMTA and PNC held a Community Walking Tour of the Potrero Yard.





BUS YARD PLANS
PLANOS DEL GARAJE
DE AUTOBUSES

BUS YARD PLANS
PLANOS DEL GARAJE
DE AUTOBUSES

Project Overview
Descripción del Proyecto

Who We Are
Quiénes Somos

Planning

ARCADIS

ARCADIS

ARCADIS

ARCADIS

ARCADIS

ARCADIS

ARCADIS

ARCADIS

ARCADIS

ARCADIS

ARCADIS

ARCADIS

ARCADIS

ARCADIS

ARCADIS

ARCADIS

ARCADIS

ARCADIS

ARCADIS

ARCADIS

ARCADIS

ARCADIS

ARCADIS

ARCADIS

ARCADIS

ARCADIS

STRAIGHT
OUTTA
HERE!
MAYORS 2016!

LÍNEA DE TIEMPO DEL PROYECTO

AERIAL VIEW: PARATRANSIT VARIANT
VISTA AEREA: VARIANTE DE PARATRANSITO

Project Overview
Descripción del Proyecto

BUILDING PROGRESS

Community Engagement: Aug & Sept 2024

The SFMTA and PNC participated in the following community activities in August and September 2024:



**Sunday Streets Mission
on Valencia Street
Aug. 25**

**Fiesta de las
Américas on 24th
Street / Calle 24
Sept. 21**



BUILDING PROGRESS

Community Engagement: Oct 2024

The SFMTA and PNC are looking forward to participating in the following community activities in October 2024:



Coming Up!
Potrero Hill Festival
Saturday, October 19,
10am – 4pm



**Franklin Square
Clean Up Day**
Oct. 5

Any additional community activities that the Working Group recommends that the SFMTA and PNC participate?





Bus Yard Updates

Chris Lazaro, SFMTA



BUILDING PROGRESS

Bus Yard Capacity Updates

	Nov 2022 <i>Original Plan Battery Electric Buses</i>	Oct 2024 <i>Updated Plan Electric Trolley Buses</i>
40'  40'	53	153 (+100)
60'  60'	160	93 (-67) (maintains current capacity)
Total Buses	213	246 (+33)
Total Staff	800+	1,100+ (Not all staff on site at same time)





Next Steps

John Angelico, SFMTA



BUILDING PROGRESS

Next Steps

PNC and the SFMTA have the following community outreach activities planned (subject to change):

- **Potrero Hill Festival: October 19, 2024** (location TBD)
- **Next Working Group meeting (potential): November 19, 2024** (Hybrid) – 3rd Tuesday of November

Please let us know if there are local residents, businesses, organizations, or other community members that may be interested in learning more the Project.



Public Comment

- Do any members of the public wish to comment?
- If you are joining via a computer, please use the raise your hand feature and we will unmute you.
- Joining by phone? We will unmute folks one at a time and call out the last four digits of your phone number.
- Please state your name and organizational affiliation.

BUILDING PROGRESS

Contact Us

John Angelico

Public Information Officer

John.Angelico@SFMTA.com

415.646.4783

Bonnie Jean von Krogh

Building Progress Public Affairs Manager

BonnieJean.vonKrogh@SFMTA.com

415.646.2447

Chris Lazaro

Program Director in Building Progress - Potrero Yard Modernization Project

Chris.Lazaro@SFMTA.com

Potrero Neighborhood Collective

PotreroYard@plenaryamericas.com

Sign Up for Project Updates

[SFMTA.com/PotreroYard](https://www.sfmta.com/PotreroYard)

