



SFMTA

# May 3, 2024

# Engineering Public Hearing

<https://sfmta.com/enghearing>

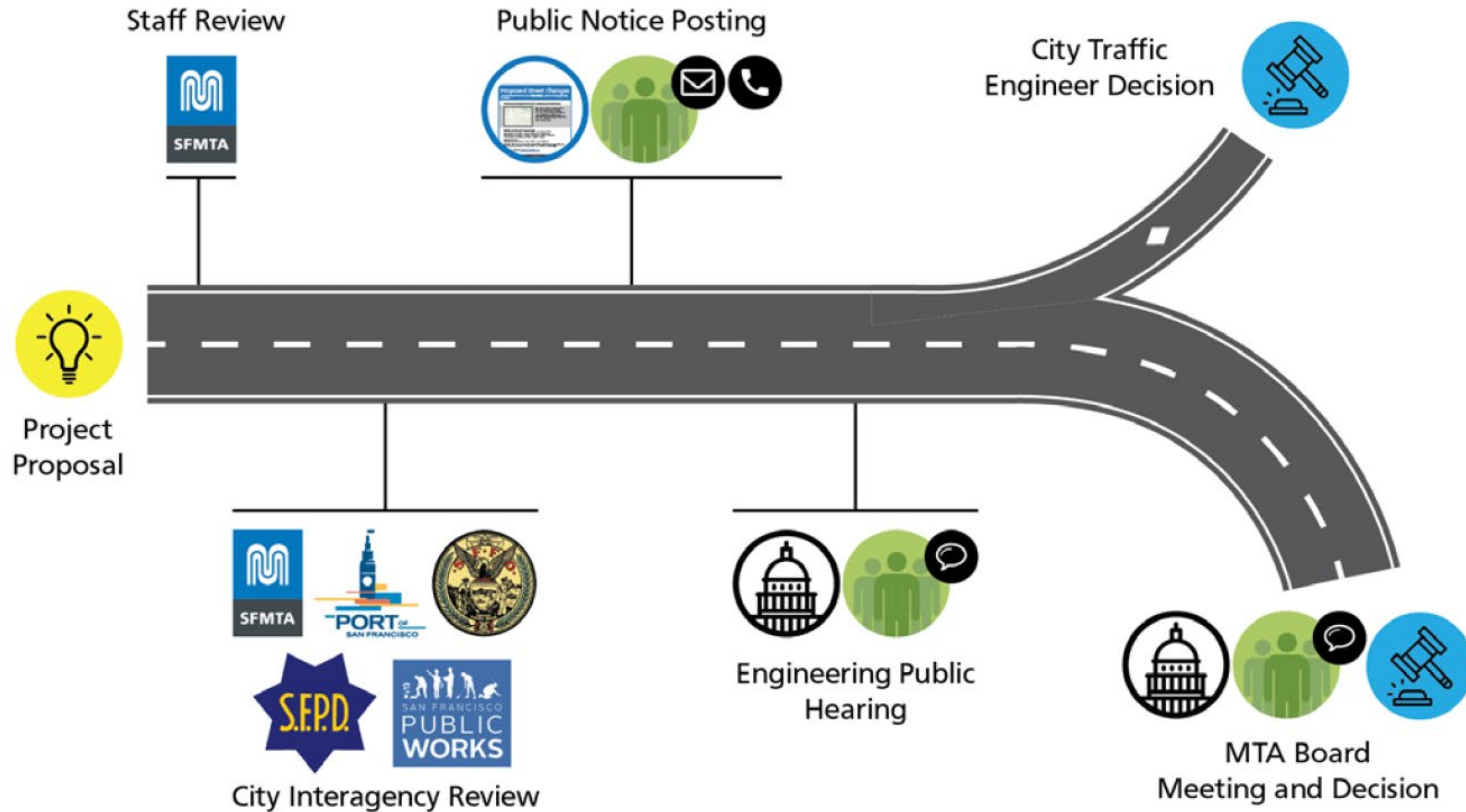
Conference Line: 1-415-523-2709

Conference ID: 836 632 456#

Please sign up to speak at [SFMTA.com/ENGSpeakerCard](https://sfmta.com/ENGSpeakerCard)

# Proposed Street Changes

How does a proposed street change get approved?



<https://www.sfmta.com/committees/engineering-public-hearings>

# Public Hearing Decision Posting

Results will be posted by 5 PM next Friday

<https://sfmta.com/engineering>

Select Meeting  
from List of Past  
Meetings



## Past Meetings & Events for this Committee

- Feb 16** **Engineering Public Hearing Meeting, February 16, 2024**  
The Streets Division of the San Francisco Municipal Transportation Agency will hold an online...
- Feb 2** **Engineering Public Hearing Meeting, February 2, 2024**  
The Streets Division of the San Francisco Municipal Transportation Agency will hold an online...
- Jan 19** **Engineering Public Hearing Meeting, January 19, 2024**  
The Streets Division of the San Francisco Municipal Transportation Agency will hold an online...

[View all past Meetings & Events >](#)



SFMTA

# May 3, 2024

# Engineering Public Hearing

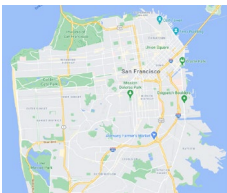
<https://sfmta.com/enghearing>

Conference Line: 1-415-523-2709

Conference ID: 836 632 456#

Please sign up to speak at [SFMTA.com/ENGSpeakerCard](https://sfmta.com/ENGSpeakerCard)

# GENERAL PUBLIC COMMENT

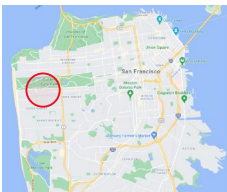


Conference Line: **1-415-523-2709** (conference ID: 836 632 456#)

To comment on an item, press \*5 to raise hand and \*6 to unmute when prompted.

## 1. ESTABLISH – RED ZONE

Irving Street, north side, from 29th Avenue to 20 feet westerly (Supervisor District 4) (Approvable by the City Traffic Engineer) Amy Chun, amy.chun@sfmta.com

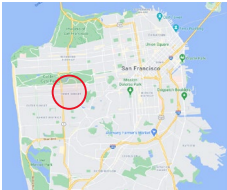


Conference Line: **1-415-523-2709** (conference ID: 836 632 456#)

To comment on an item, press \*5 to raise hand and \*6 to unmute when prompted.

## 2. ESTABLISH – RIGHT TURN ONLY

17th Avenue, northbound and southbound, at Judah Street (Supervisor District 7) (Approvable by the City Traffic Engineer) Ken Kwong, [kenneth.kwong@sfmta.com](mailto:kenneth.kwong@sfmta.com)

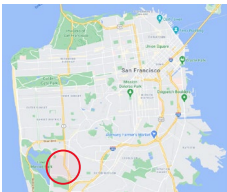
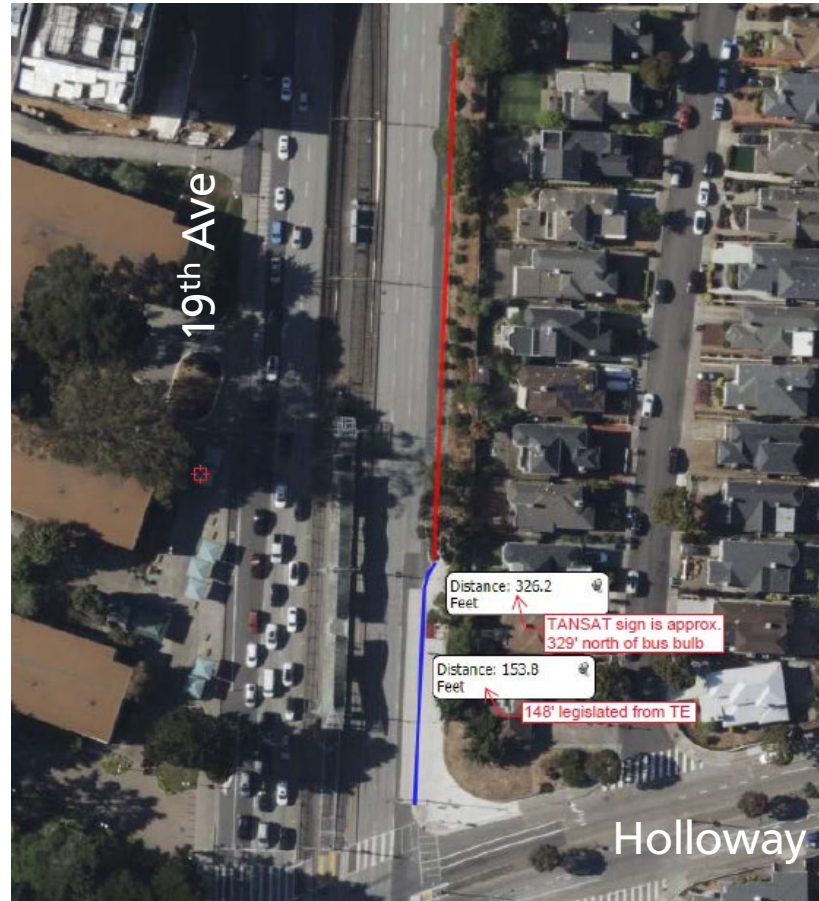


Conference Line: **1-415-523-2709** (conference ID: 836 632 456#)

To comment on an item, press \*5 to raise hand and \*6 to unmute when prompted.

### 3. RESCIND – TOW-AWAY NO STOPPING ANYTIME

19th Avenue, east side, from 148 feet to 477 feet north of Holloway Avenue (Supervisor District 7)  
(Requires approval by the SFMTA Board) Michael Tsai, michael.tsai@sfmta.com



Conference Line: **1-415-523-2709** (conference ID: 836 632 456#)

To comment on an item, press \*5 to raise hand and \*6 to unmute when prompted.

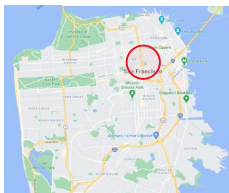
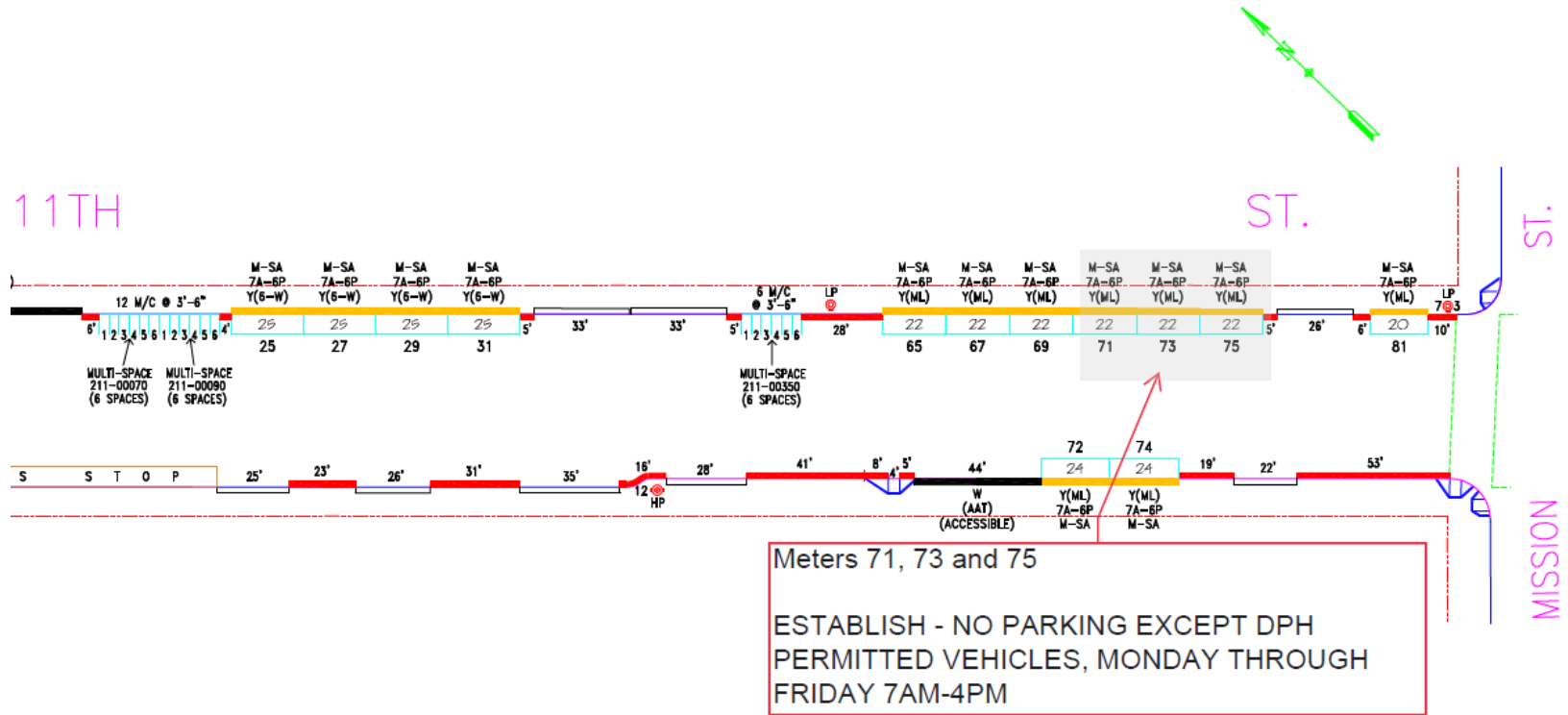


4(a). RESCIND – TOW-AWAY, NO PARKING, EXCEPT SAN FRANCISCO DEPARTMENT OF PUBLIC HEALTH (SFPDH) OR SAN FRANCISCO FIRE DEPARTMENT (SFFD) PERMITTED VEHICLES, 9 AM TO 12 PM, MONDAY THROUGH THURSDAY AND YELLOW ZONE, COMMERCIAL LOADING, 7 AM TO 9 AM AND 12 PM TO 6 PM, MONDAY THROUGH THURSDAY AND 7AM TO 6PM, FRIDAY TO SATURDAY

4(b). ESTABLISH – TOW-AWAY, NO PARKING, EXCEPT SAN FRANCISCO DEPARTMENT OF PUBLIC HEALTH (SFPDH) OR SAN FRANCISCO FIRE DEPARTMENT (SFFD) PERMITTED VEHICLES, 7 AM TO 4 PM, MONDAY THROUGH FRIDAY

11th Street, east side from 67 to 133 feet north of Mission Street

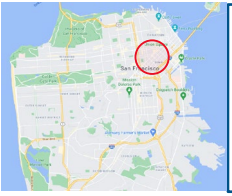
(Supervisor District 6) (Requires approval by the SFMTA Board) Daniel Luu, daniel.luu@sfmta.com



Conference Line: **1-415-523-2709** (conference ID: 836 632 456#)  
 To comment on an item, press \*5 to raise hand and \*6 to unmute when prompted.

**5. ESTABLISH – RESIDENTIAL PERMIT PARKING AREA U (Eligibility only, no signs)  
 1000-1099 block of Howard Street (all addresses not currently part of RPP Area U) (Supervisor District 6)  
 (Requires approval by the SFMTA Board) Gerry Porras, gerry.porras@sfmta.com**

184 6th Street	1044 Howard Street	1082 Howard Street	1001-1009 Howard Street
100 Russ Street	1050 Howard Street	1084-1086 Howard Street	1025 Howard Street
131 Russ Street	1054-1056 Howard Street	1088 Howard Street	1035 Howard Street
1000 Howard Street	1058-1062 Howard Street	1096 Howard Street	1077 Howard Street
1014-1016 Howard Street	1066 Howard Street	195 7th Street	1097 Howard Street
1028 Howard Street	1068-1070 Howard Street		
1032-1036 Howard Street	1074-1076 Howard Street		
1038 Howard Street	1078-1080 Howard Street		



Conference Line: **1-415-523-2709** (conference ID: 836 632 456#)  
 To comment on an item, press \*5 to raise hand and \*6 to unmute when prompted.

**6. ESTABLISH – TOW-AWAY, NO STOPPING, EXCEPT PERMITTED CAR SHARE**

**A. Fillmore Street, median parking strip, from 48 feet to 60 feet north of Chestnut Street**

**B. Gough Street, west side, from 95 feet to 113 feet north of Green Street**

C. Taylor Street, east side, from 20 feet to 38 feet south of Sacramento Street

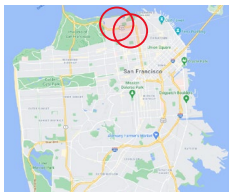
D. Santiago Street, north side, from 20 feet to 38 feet east of 24th Avenue

E. Page Street, south side, from 142 feet to 160 feet east of Buchanan Street

F. Buena Vista Avenue West, east side, from 20 feet to 29 feet south of Haight Street

G. San Jose Avenue, east side, from Niagara Avenue to 36 feet northerly (two car share spaces)

**(Supervisor Districts 2, 3, 4, 5, 8 & 11) (Requires approval by the SFMTA Board) Andy Thornley, andy.thornley@sfmta.com**



Conference Line: **1-415-523-2709** (conference ID: 836 632 456#)

To comment on an item, press \*5 to raise hand and \*6 to unmute when prompted.

## 6. ESTABLISH – TOW-AWAY, NO STOPPING, EXCEPT PERMITTED CAR SHARE

A. Fillmore Street, median parking strip, from 48 feet to 60 feet north of Chestnut Street

B. Gough Street, west side, from 95 feet to 113 feet north of Green Street

C. Taylor Street, east side, from 20 feet to 38 feet south of Sacramento Street

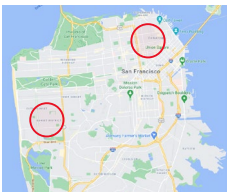
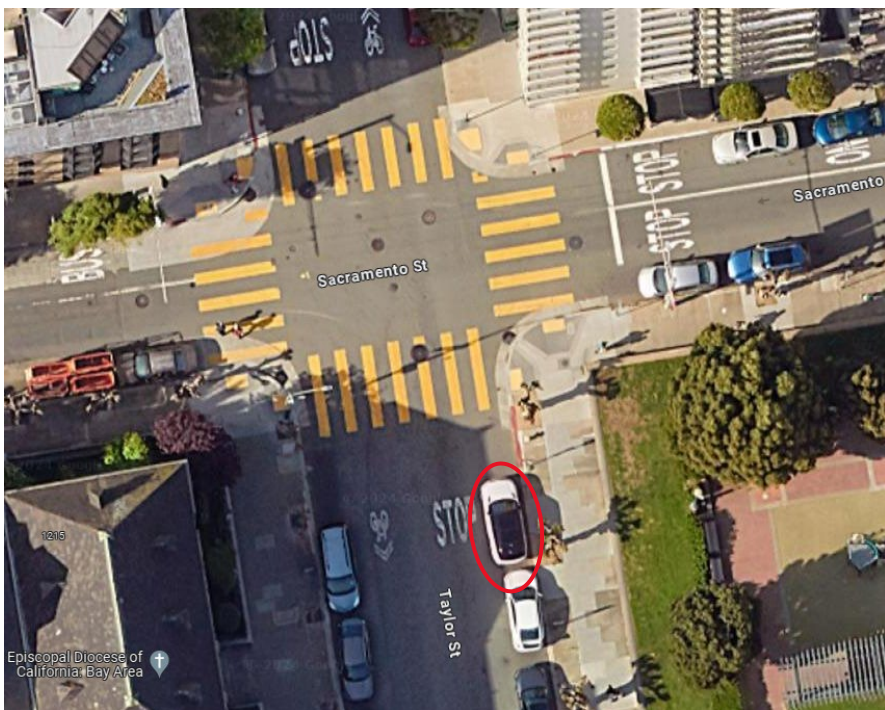
D. Santiago Street, north side, from 20 feet to 38 feet east of 24th Avenue

E. Page Street, south side, from 142 feet to 160 feet east of Buchanan Street

F. Buena Vista Avenue West, east side, from 20 feet to 29 feet south of Haight Street

G. San Jose Avenue, east side, from Niagara Avenue to 36 feet northerly (two car share spaces)

(Supervisor Districts 2, 3, 4, 5, 8 & 11) (Requires approval by the SFMTA Board) Andy Thornley, [andy.thornley@sfmta.com](mailto:andy.thornley@sfmta.com)



Conference Line: **1-415-523-2709** (conference ID: 836 632 456#)

To comment on an item, press \*5 to raise hand and \*6 to unmute when prompted.

## 6. ESTABLISH – TOW-AWAY, NO STOPPING, EXCEPT PERMITTED CAR SHARE

A. Fillmore Street, median parking strip, from 48 feet to 60 feet north of Chestnut Street

B. Gough Street, west side, from 95 feet to 113 feet north of Green Street

C. Taylor Street, east side, from 20 feet to 38 feet south of Sacramento Street

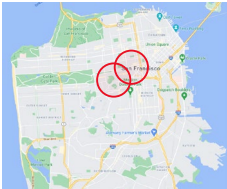
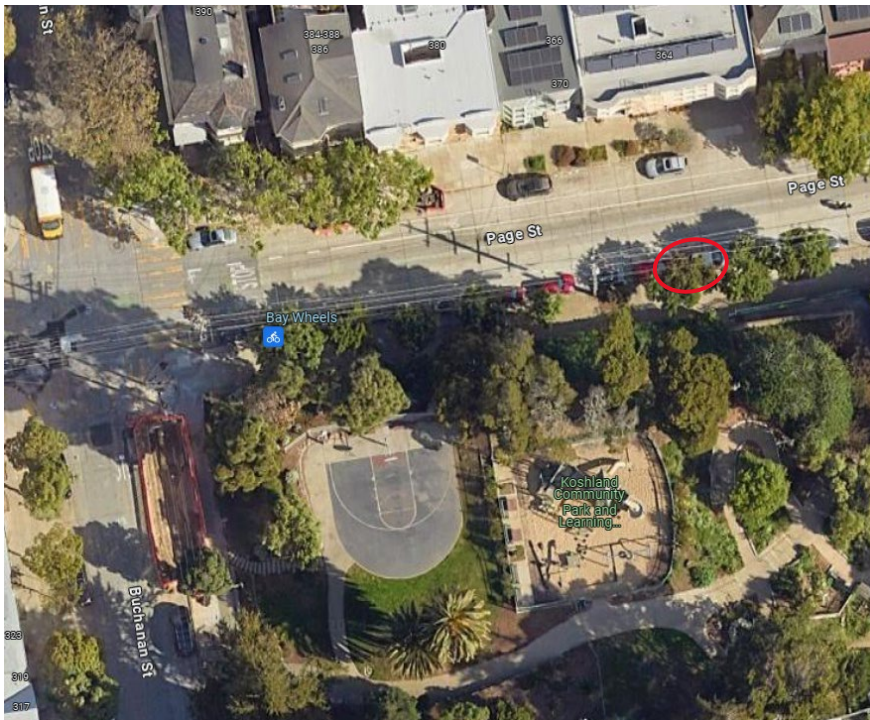
D. Santiago Street, north side, from 20 feet to 38 feet east of 24th Avenue

E. Page Street, south side, from 142 feet to 160 feet east of Buchanan Street

F. Buena Vista Avenue West, east side, from 20 feet to 29 feet south of Haight Street

G. San Jose Avenue, east side, from Niagara Avenue to 36 feet northerly (two car share spaces)

(Supervisor Districts 2, 3, 4, 5, 8 & 11) (Requires approval by the SFMTA Board) Andy Thornley, [andy.thornley@sfmta.com](mailto:andy.thornley@sfmta.com)



Conference Line: **1-415-523-2709** (conference ID: 836 632 456#)

To comment on an item, press \*5 to raise hand and \*6 to unmute when prompted.

## 6. ESTABLISH – TOW-AWAY, NO STOPPING, EXCEPT PERMITTED CAR SHARE

A. Fillmore Street, median parking strip, from 48 feet to 60 feet north of Chestnut Street

B. Gough Street, west side, from 95 feet to 113 feet north of Green Street

C. Taylor Street, east side, from 20 feet to 38 feet south of Sacramento Street

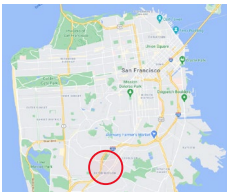
D. Santiago Street, north side, from 20 feet to 38 feet east of 24th Avenue

E. Page Street, south side, from 142 feet to 160 feet east of Buchanan Street

F. Buena Vista Avenue West, east side, from 20 feet to 29 feet south of Haight Street

G. San Jose Avenue, east side, from Niagara Avenue to 36 feet northerly (two car share spaces)

(Supervisor Districts 2, 3, 4, 5, 8 & 11) (Requires approval by the SFMTA Board) Andy Thornley, [andy.thornley@sfmta.com](mailto:andy.thornley@sfmta.com)

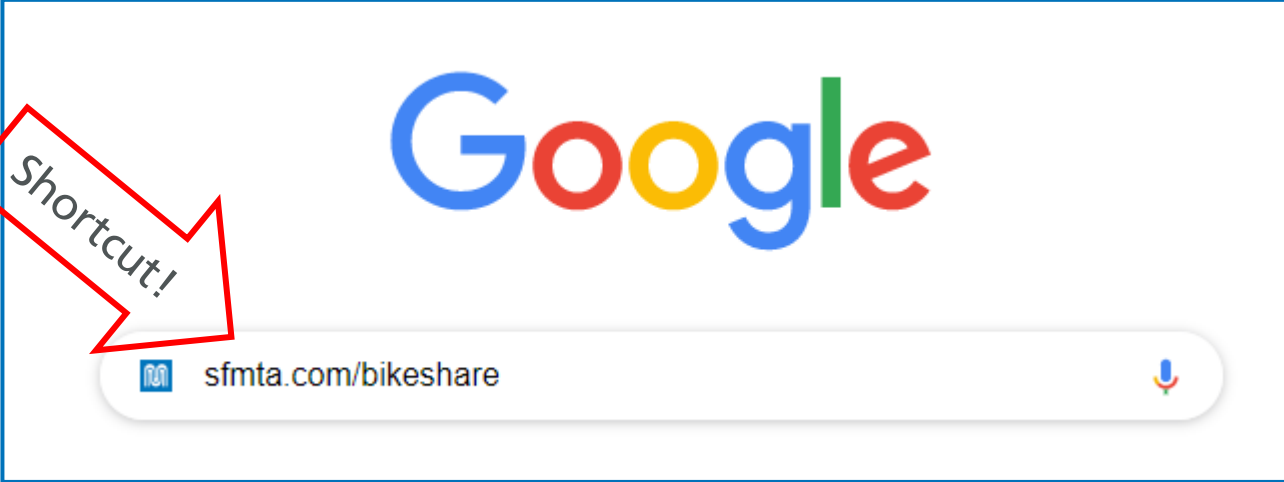


Conference Line: **1-415-523-2709** (conference ID: 836 632 456#)

To comment on an item, press \*5 to raise hand and \*6 to unmute when prompted.



<https://www.sfmta.com/getting-around/bike/bike-share>

A screenshot of a Google search page. The Google logo is centered at the top. Below it is a search bar containing the text "sfmta.com/bikeshare" and a microphone icon on the right. A red arrow points from the search bar to the text "Shortcut!". The entire search bar area is enclosed in a blue rectangular border.

Shortcut!

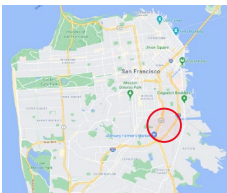
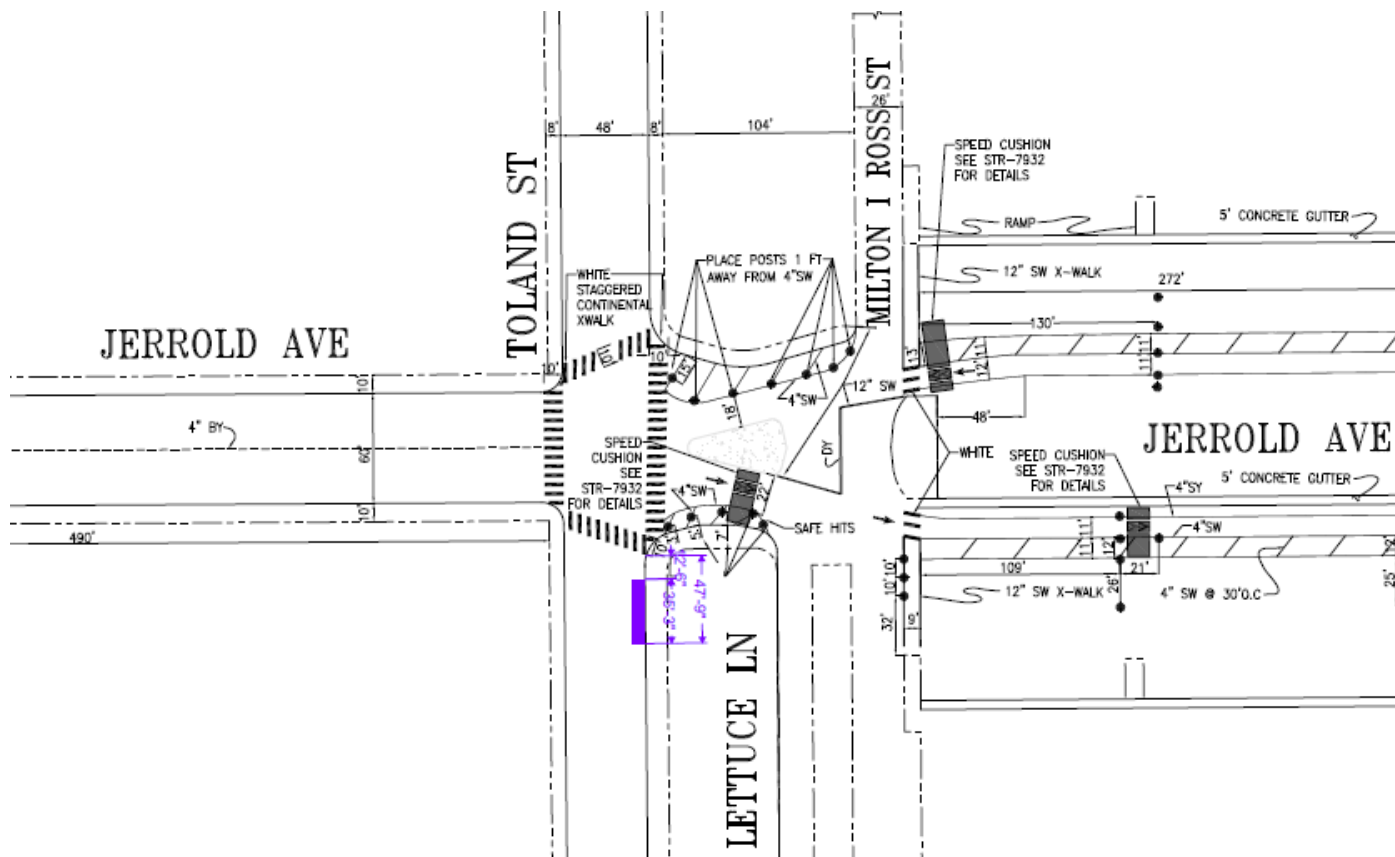
sfmta.com/bikeshare

#### Quick Links

[Overview](#) | [Equity](#) | [Bikeshare's Purpose](#) | [System Planning and Station Siting](#) | [Bay Area Bike Share Pilot](#) | [Stationless Bikeshare](#) | [Bikeshare Data](#)

**7. ESTABLISH – NO STOPPING, EXCEPT BICYCLES  
ESTABLISH – BIKE SHARE STATION**

**Toland Street, east side, from 12 feet to 48 feet south of Jerrold Avenue (36-foot bike share station)  
(Supervisor District 10) (Approvable by the City Traffic Engineer) Laura Stonehill, laura.stonehill@sfmta.com**

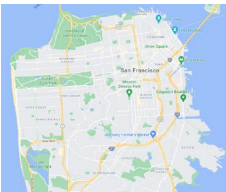


Conference Line: **1-415-523-2709** (conference ID: 836 632 456#)

To comment on an item, press \*5 to raise hand and \*6 to unmute when prompted.



# PUBLIC COMMENT



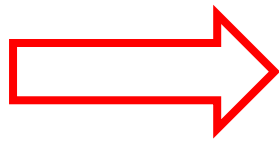
Conference Line: **1-415-523-2709** (conference ID: 836 632 456#)  
To comment on an item, press \*5 to raise hand and \*6 to unmute when prompted.

# Public Hearing Decision Posting

Results will be posted by 5 PM next Friday

<https://sfmta.com/engineering>

Select Meeting  
from List of Past  
Meetings



**Past Meetings & Events for this Committee**

- Feb 16** **Engineering Public Hearing Meeting, February 16, 2024**  
The Streets Division of the San Francisco Municipal Transportation Agency will hold an online...
- Feb 2** **Engineering Public Hearing Meeting, February 2, 2024**  
The Streets Division of the San Francisco Municipal Transportation Agency will hold an online...
- Jan 19** **Engineering Public Hearing Meeting, January 19, 2024**  
The Streets Division of the San Francisco Municipal Transportation Agency will hold an online...

[View all past Meetings & Events >](#)



SFMTA

# Next Engineering Public Hearing May 17, 2024

<https://sfmta.com/enghearing>

Conference Line: 1-415-523-2709

Conference ID: 836 632 456#