



SFMTA

Building Progress: Potrero Yard Neighborhood Working Group

September 2023 | Meeting #36



BUILDING PROGRESS

Detailed Agenda

1. Welcome — 5 minutes
2. Member & SFMTA Announcements — 5 minutes
3. Schedule Update – 5 minutes
4. Public Art Update – 15 minutes
5. Project Updates: 100% Draft Schematic Design – 45 minutes
6. Next Steps — 10 minutes
7. Public comment - members of the public who wish to participate in the meeting virtually will be placed on mute, regardless of joining via video or by phone, until the Public Comment section.



Today's Objectives

- Update on public art plan
- Provide an overview of the draft 100% Schematic Design



SFMTA

Member and SFMTA Announcements

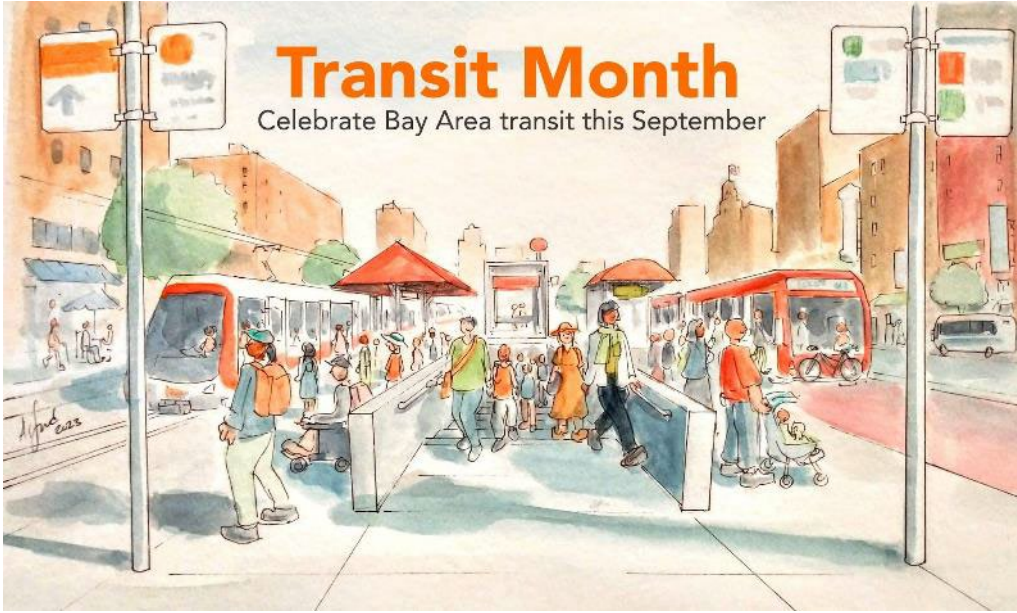
Bonnie Jean von Krogh, SFMTA



BUILDING PROGRESS

Announcements: SFMTA

September is Transit Month!



Moving Pictures: Art and Transit

- Transit-themed art
- Potrero Yard tours
- 22 Fillmore ride to Arepas (5 pm reservation)

When: September 22, 2023, 3:00 p.m.
Where: 1890 Bryant St, SF (at Mariposa)
Register: SFTransitRiders.salsalabs.org/MovingPictures/

MTA Board Welcomes New Directors:



Lydia So



Dominica Henderson

More information on Transit Month can be found at: SFTransitRiders.org/transitmonth/



Announcements: Working Group

Working Group members please share upcoming events or activities with the Working Group, SFMTA, and PNC.



SFMTA

Schedule Updates

Jennifer Trotter, PNC



BUILDING PROGRESS

Schedule Updates

As Project design progresses, in August PNC:

- Hosted an NWG New Member Onboarding session with bus yard tour (08/02)
- Participated in:
 - MEDA's Golden Anniversary Community Resource Fair (08/12)
 - Potrero Hill Day on the Green Event (08/26)
- Hosted Listening Sessions with
 - Black to the Future (08/15)
 - Calle 24 Council (08/29)

Upcoming submittals include:

- 100% final Schematic Design submit to SFMTA (October 5, 2023)
- Final Environmental Impact Report (FEIR) (anticipated Late 2023)

BUILDING PROGRESS

Schedule Updates: 100% Draft Schematic Design Meetings

PNC is planning to present the 100% draft Schematic Design to the public for input at:

- Potrero Yard Neighborhood Working Group (Tuesday, September 12, 2023)
- Staff In-Reach event (Tuesday, September 19, 2023)
- Public Meeting (Wednesday, September 20, 2023)
- Community Listening Sessions (to be scheduled)
- Citywide Listening Sessions (to be scheduled)
- Online - project website (October 2023)



BUILDING PROGRESS

100% Draft Schematic Design Meeting

Reimagine Potrero Yard Reimagina el Potrero Yard 重新想象 Potrero Yard

Wednesday, September 20, 2023 at 5:30 p.m.
Miércoles 20 de septiembre de 2023 a las 5:30 p.m.
2023年9月20日星期三下午5:30

Z SPACE, 450 FLORIDA ST, SAN FRANCISCO



Can't attend? Visit [SFMTA.com/PotreroYard](https://www.sfmta.com/PotreroYard) starting October 4, 2023 to view Community Open House information.
No puede asistir? Visite [SFMTA.com/PotreroYard](https://www.sfmta.com/PotreroYard) a partir del 4 de octubre de 2023 para ver información de la Jornada Comunitaria.

Palm Card

CALL TO ACTION:

- Pass out a palm card
- Hang a Poster
- Like and Share a social media post

**Reimagina Potrero Yard
Reimagina Potrero Yard
重新構想 Potrero Yard**

Jornada Comunitaria
¡Queremos oír de usted!

Community Open House
We want to hear from you!

社區開放日
我們希望聽到您的意見!

Wednesday, Sept. 20, 2023, 5:30 p.m.
Z Space, 450 Florida Street, SF

Posters

**Reimagina Potrero Yard
Reimagina Potrero Yard
重新構想 Potrero Yard**

JORNADA COMUNITARIA
¡Queremos oír de usted!

COMMUNITY OPEN HOUSE
We want to hear from you!

社區開放日
我們希望聽到您的意見!

Wednesday, September 20, 2023, 5:30 p.m.
Z Space, 450 Florida Street, SF

**Reimagina Potrero Yard
Jornada Comunitaria**

**Reimagine Potrero Yard
Open House**

我們希望聽到您的意見!

Wednesday, Sept. 20, 2023, 5:30 p.m.
Z Space, 450 Florida Street, SF

Social Media Post





SFMTA

Public Art Plan - Update

Jackie von Treskow, San Francisco Arts Commission



RFQ and
Qualification
Panel



Artist Review
Panel One



Proposal
Development and
Review Phase



Final Artist
Review Panel

Artist Qualification Panel

- The purpose of the Artist Qualification Panel is to review all project applicants to develop a short list of 15 - 30 applicants, deemed most qualified for the project opportunity.
- This qualified list is submitted for further review to the Artist Review Panel.
- The reviewers who served on the Qualification Panel (other than SFAC staff) serve on the Review Panel for continuity.



Artist Review Panel for Southeast Community Center Plaza Sculpture Project (2019)

Panel Composition

- One (1) SFAC Staff
- One (1) MTA Representative
- One (1) Arts Professional

Time Commitment

- One 1.5-hour orientation meeting
- 7-8 hours application review over the course of three weeks
- One 3-hour panel meeting to review and tally scores

RFQ and
Qualification
Panel



Artist Review
Panel One



Proposal
Development and
Review Phase



Final Artist
Review Panel

Artist Review Panel One

- Reviews 15 - 30 artist applications shortlisted by Artist Qualification Panel based on the scoring criteria provided.
- Identifies three (3) finalists who will be invited to develop site-specific conceptual proposals for each artwork opportunity.



Rúupaywa: Songs of the Watershed (2023) by Walter Kitundu at the Alameda Creek Watershed Center

Panel Composition*

- One (1) Arts Commissioner
- One (1) MTA Representative
- One (1) PNC Representative
- One (1) Community Representative
- Three (3) Arts Professionals

**Same panelists will serve on Review Panel Two.*

Time Commitment

- Two (2) 4-hour panel meetings (one for glass opportunities, one for mosaic opportunity).
- 1-2 hours prior to first panel meeting to review panelist onboarding materials.

RFQ and
Qualification
Panel



Artist Review
Panel One



Proposal
Development and
Review Phase



Final Artist
Review Panel

Artist Orientation Meeting

- Artists Finalists will attend an Orientation Meeting arranged by Commission staff with representatives of the Client agency, Architect Design Team, and Community Representatives.
- All Review Panel members are invited to participate in the orientation meetings. Participation is voluntary.
- Orientation meetings involve a site visit and review of project background materials. The orientation meeting is typically 2 -3 hours in duration.



Artist Orientation Meeting for Alameda Creek Watershed Project (2019)

- To ensure that artists propose feasible and durable artwork of the highest aesthetic quality, staff reviews the development of artwork proposals prior to any public display or submission to the Review Panel.
- Proposals are posted on the Arts Commission website for 2 weeks to allow for public comment. Proposal boards will also be placed on public view at an accessible public location in the neighborhood, as determined in coordination with SFMTA.
- Public comment will be provided to the Review Panel for their consideration. Public comment is not a vote and should not be intended as an accurate representation of the community's preference.

RFQ and
Qualification
Panel



Artist Review
Panel One



Proposal
Development and
Review Phase



Final Artist
Review Panel

Artist Review Panel Two

- Artist Finalists present their proposals and are interviewed by the panel.
- SFAC Public Art Project Manager presents a summary of public comments received on the proposals and results of artist reference checks.
- After deliberation and scoring, one (1) artist finalist/proposal is selected for recommendation to the Arts Commission for each artwork opportunity.



Number 69S (2019) by Leonardo Drew at SFO Harvey Milk Terminal One

Panel Composition

The same panelists serve on both Review Panel One and Two.

Time Commitment

- Two (2) 4-hour panel meetings (one for glass opportunities, one for mosaic opportunity).

The Role of the Panel

- The panel undertakes its deliberations in accordance with SFAC policy and procedures.
- Panel recommendations must be approved by the Arts Commission.
- Panelists are expected to participate during the entire length of the panel meetings to allow for fair consideration and evaluation of all the artists. If a panelist needs to step away from the panel, the meeting may need to be either put on hold until the panelist returns, or cancelled and rescheduled.
- Arts Commissioners, other City agency commissioners, City employees and project team consultants who serve as panel members do so without compensation. Compensation will be paid to Arts Professional and Community Member panel members at the rate of \$50/hour (\$400 a day, or \$200 a half-day).



Untitled (2022) by Jorge Pardo for the Van Ness Bus Rapid Transit Project Geary Street Station



Point of Infinity: Surface of Revolution with Constant Negative Curvature (2023) by Hiroshi Sugimoto on Yerba Buena Island for the Treasure Island Public Art Program

Panelist Role and Responsibilities

- Bring your expertise to the process, such as knowledge of art and artists, architecture, history, values and culture of the community or client department, or other knowledge specific to the project, and share it with the rest of the panel in order to better inform each panelist's decision making.
- Score each application/proposal fairly and judiciously according to the criteria provided.
- Judge the applicant by what is submitted in the artist's application and discussed at the panel.
- Be aware of bias (prejudgment in the evaluation of one group and its members relative to another group); some biases we are aware of and some are implicit or unconscious
 - *Be mindful of the way personal privilege and bias show up in review of artists and their work.*
 - *Be aware of personal, artistic/aesthetic, and cultural preferences.*
- Listen and be open to the perspectives and expertise each person brings to the table.
 - *Panelist should limit sharing of personal/outside knowledge to 'field expertise' rather than prior experience with artist.*
- Frame comments as strengths and areas for improvement as they relate to the scoring criteria and project goals.



SFMTA

Environmental Studies

Bonnie Jean von Krogh, SFMTA



BUILDING PROGRESS

Draft Environmental Impact Report (DEIR): Project Alternatives

The project alternatives considered in the Draft EIR included:

- Proposed Project: DEIR Project
- Alternative A: No Project
- Alternative B: Full Preservation
- Alternative C: Partial Preservation
- Alternative D: Transit Facility Plus Commercial Only



Final EIR: Project Alternatives

- The project alternatives considered in the Final EIR include:
 - **NEW:** FEIR Proposed Project: Refined project (513 units, housing maximization)
 - DEIR Proposed Project: DEIR Project (575 units)
 - Alternative A: No Project
 - Alternative B: Full Preservation
 - Alternative C: Partial Preservation
 - Alternative D: Transit Facility Plus Commercial Only
 - **NEW:** Alternative D Variant: Transit Facility Plus Commercial with Paratransit

Environmental Studies (Preferred Alternative)

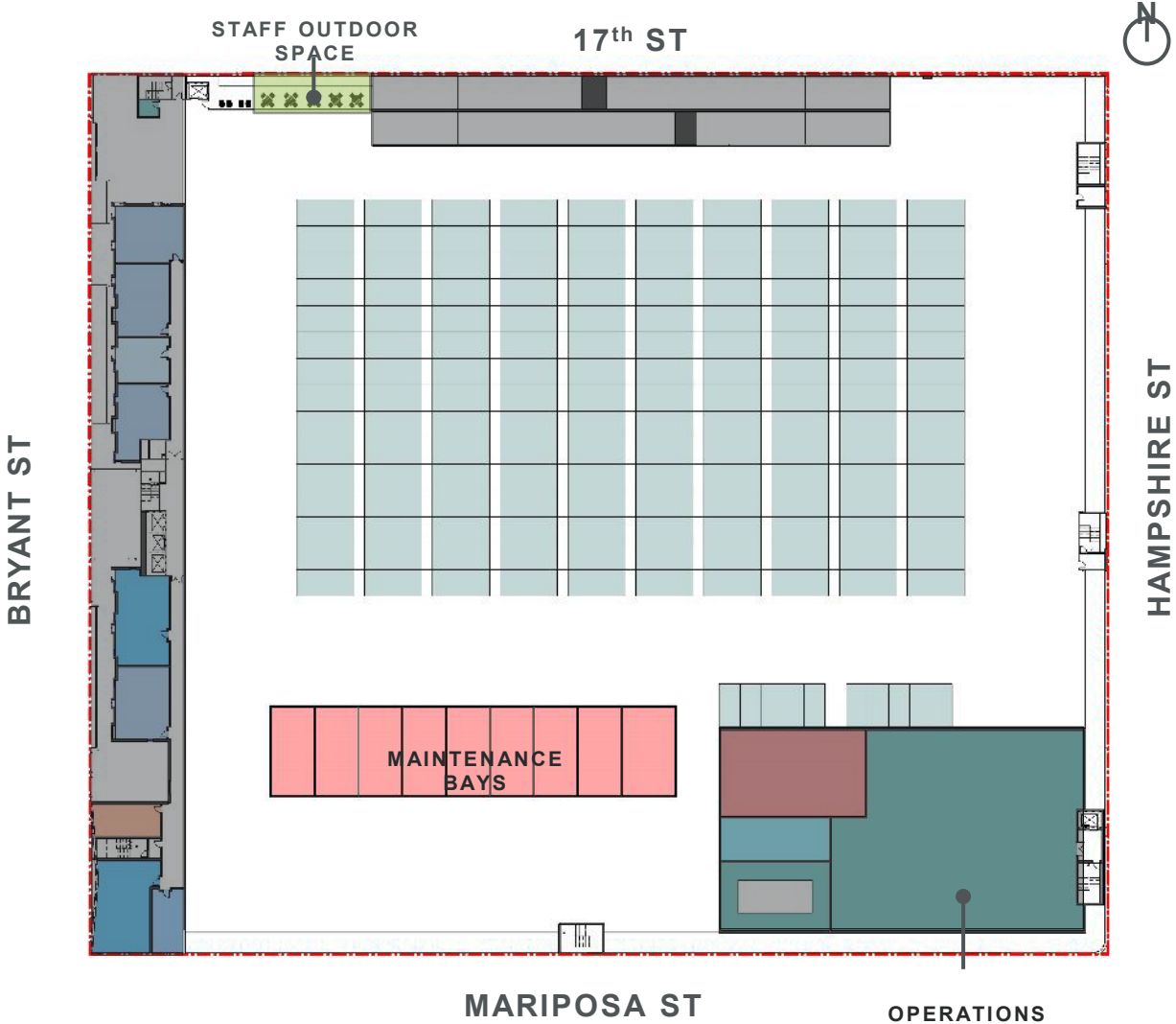


The FEIR proposed project is a refined version of the DEIR proposed project and includes:

- 4 story bus yard
- Up to 513 residential units with up to 13 stories and maximum height of 150 feet
- Approximately 92,000 square feet of open space
- Class 1 bike parking (long term)
- Protected and widened bike lanes with raised crosswalks on 17th Street
- Construction is expected to last 4 years

Final EIR Alternative D Variant with Paratransit

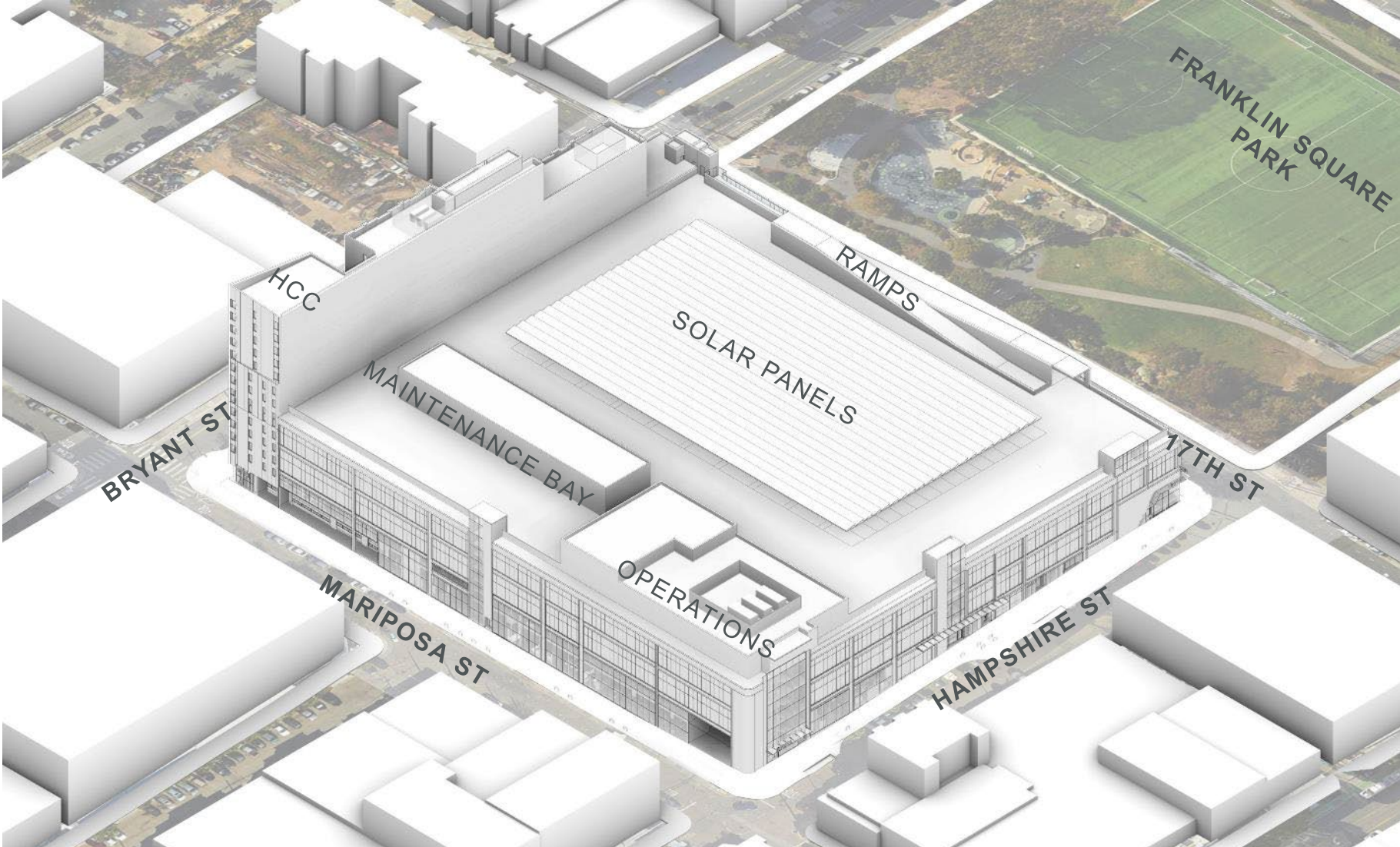
CONCEPTUAL BYC ROOF PLAN



BUILDING PROGRESS

Final EIR Alternative D Variant with Paratransit

CONCEPTUAL
BYC AERIAL
VIEW





SFMTA

Draft 100% Schematic Design

Tony Gill, PNC

Jennifer Moore, PNC





POTRERO YARD

MODERNIZATION PROJECT

URBAN DESIGN AND CONTEXT

BEFORE



Franklin Square
Park

17TH ST

EXISTING
BUS YARD

BRYANT ST

HAMPSHIRE ST

MARIPOSA ST

HARRISON ST

ALABAMA ST

FLORIDA ST

YORK ST

POTRERO AVE

UTAH STREET

BAYSHORE FWY



URBAN DESIGN AND CONTEXT

AFTER



Franklin Square
Park

17TH ST

BRYANT ST

HAMPSHIRE ST

MARIPOSA ST

HARRISON ST

ALABAMA ST

FLORIDA ST

YORK ST

POTRERO AVE

UTAH STREET

BAYSHORE FWY



SITE CONTEXT

Franklin Square
Park

17TH ST

BRYANT ST

HAMPSHIRE ST

MARIPOSA ST

FLORIDA ST

BRYANT ST

YORK ST

HAMPSHIRE ST

POTRERO AVE

UTAH STREET



URBAN DESIGN AND CONTEXT

URBAN EDGE & STREETScape



URBAN DESIGN AND CONTEXT

URBAN EDGE & STREETScape



Franklin Square
Park

BRYANT ST

HAMPSHIRE ST

POTRERO AVE

17TH ST

HCC

Bus Yard

Retail

MARIPOSA ST

FLORIDA ST

BRYANT ST

YORK ST

HAMPSHIRE ST

POTRERO AVE



BUS YARD

BASEMENT

BUS YARD (BYC)

- Garbage/Loading
- Fare Box
- Shared MEP Spaces
- Bay Maintenance Pits

HOUSING COMPONENT (HCC)

- Garbage/Loading
- Support/Storage



FARE BOX & CLIPPER
CARD READER REPAIR
SHOP

BUS YARD

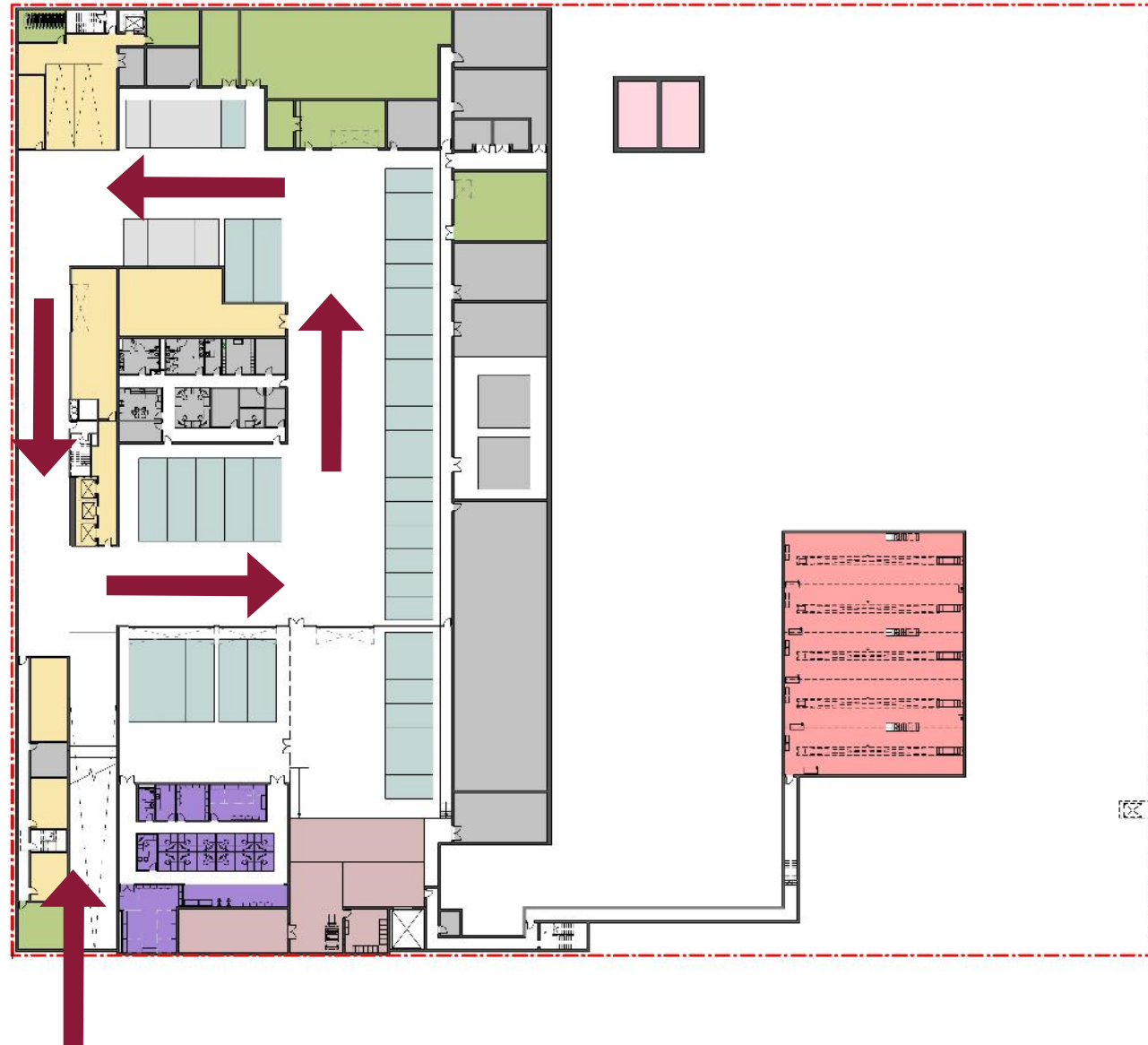
BASEMENT

BUS YARD (BYC)

- Garbage/Loading Circulation
- Fare Box Circulation

HOUSING COMPONENT (HCC)

- Garbage/Loading Circulation
- Support/Storage Circulation



BUS YARD

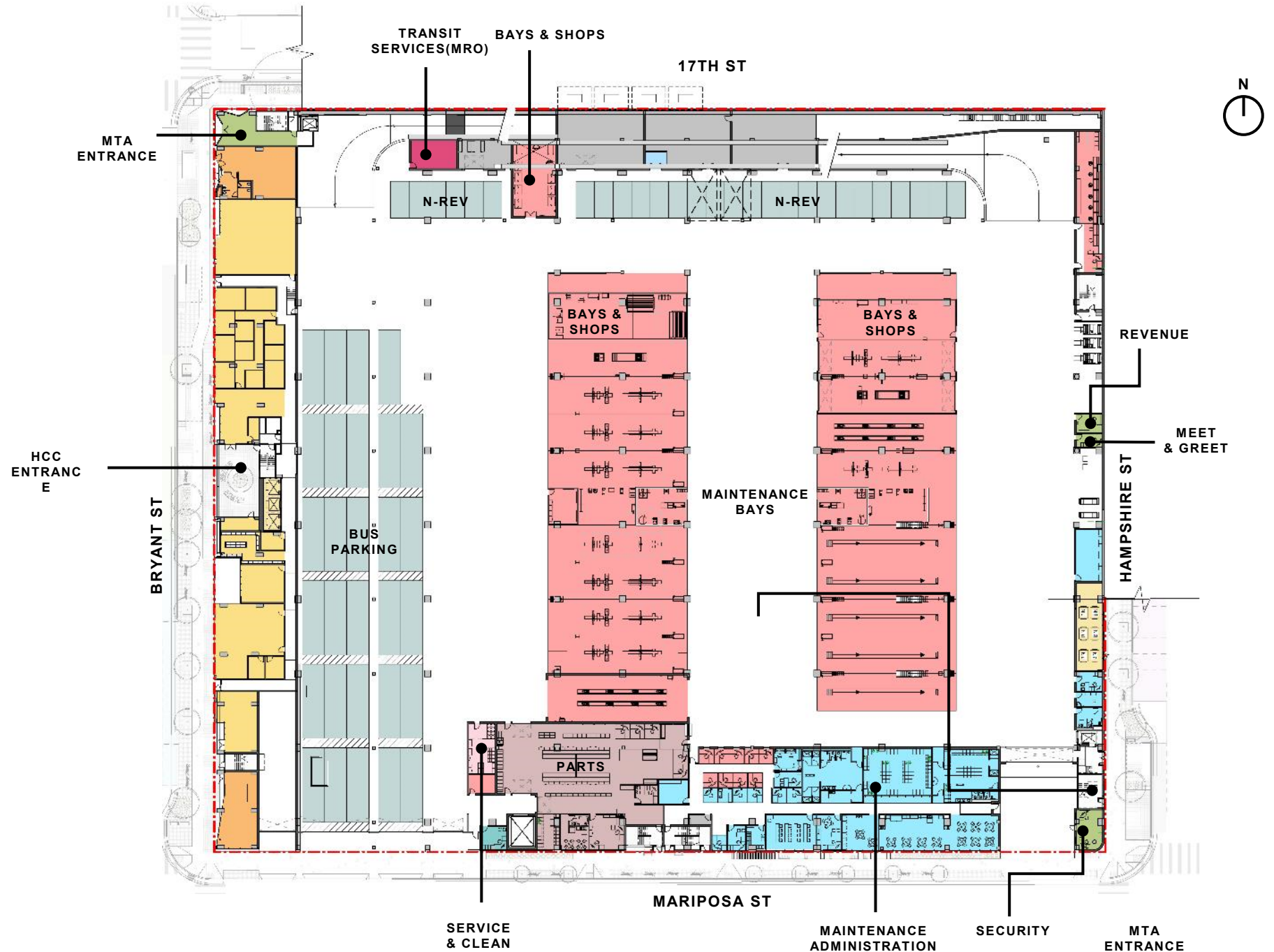
GROUND LEVEL

BUS YARD (BYC)

- Maintenance Bays
- Bus Parking
- Support Spaces

HOUSING COMPONENT (HCC)

- Public Washrooms
- Retail
- Community Space
- HCC Support Spaces



BUS YARD

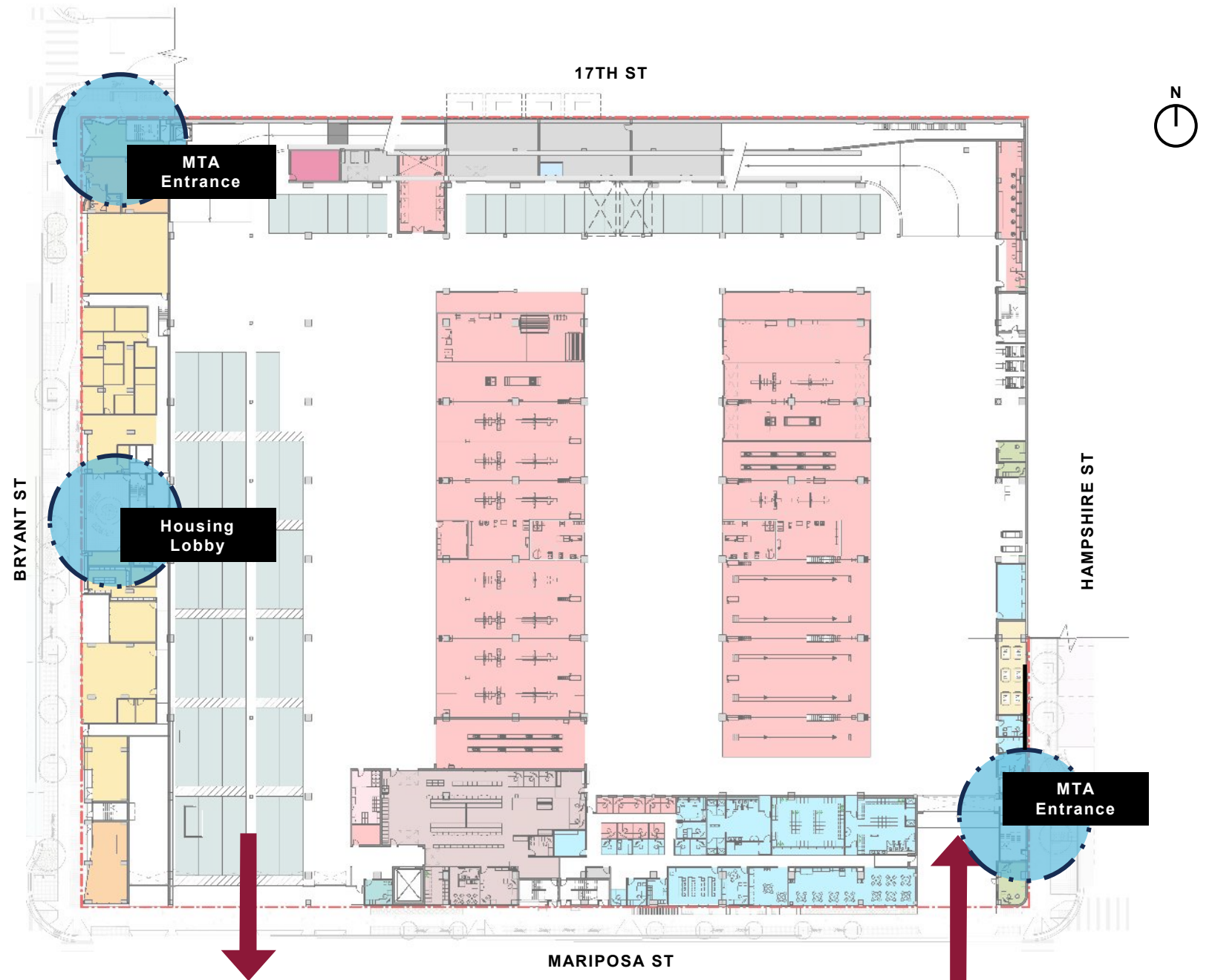
GROUND LEVEL

BUS YARD (BYC)

- 17th St & Bryant St Entry
- Hampshire St & Mariposa St Entry

HOUSING COMPONENT (HCC)

- Bryant St Entry

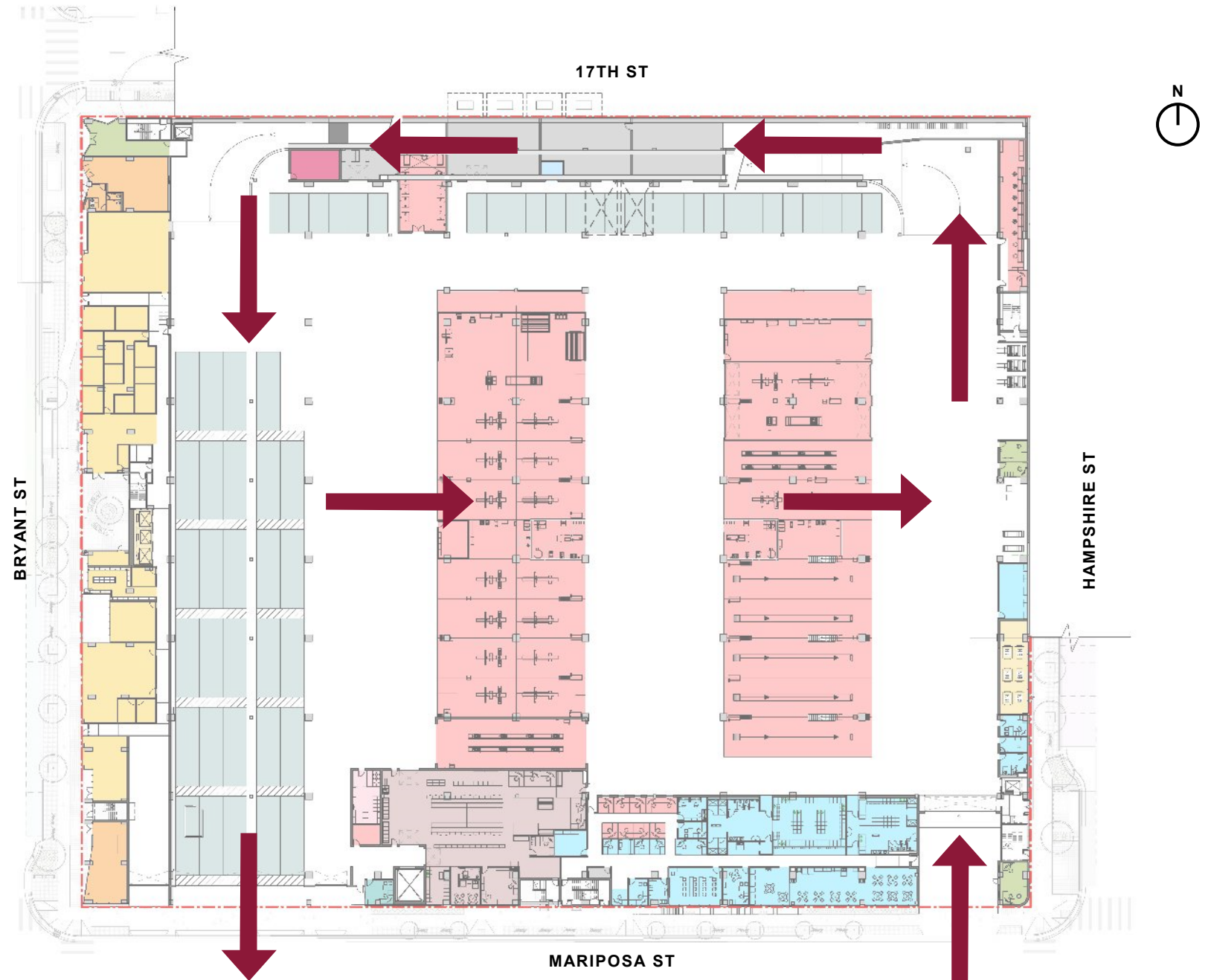


BUS YARD

GROUND LEVEL

BUS YARD (BYC)

- Bus Entry & Exit
- Maintenance
- Internal Movements

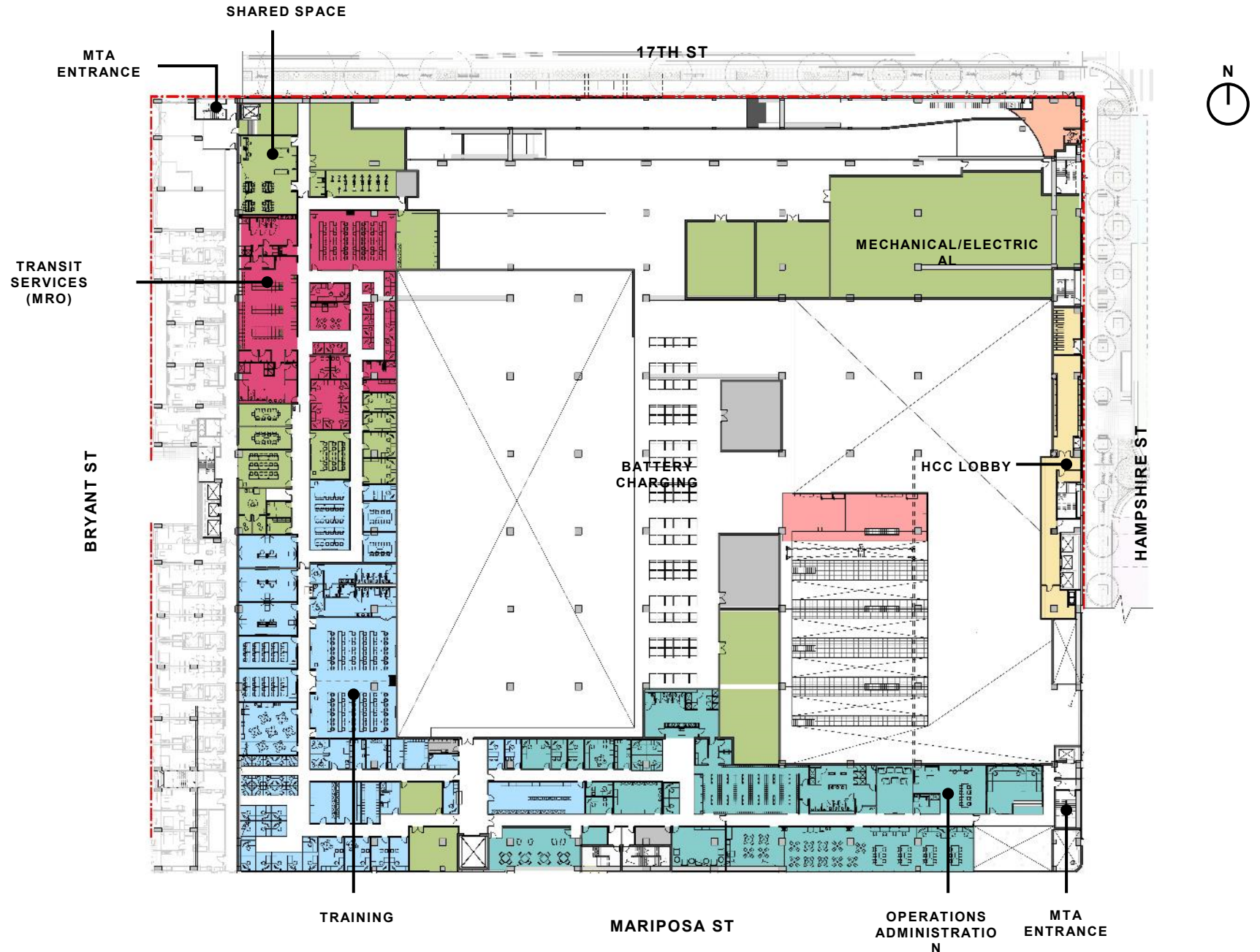


BUS YARD

LEVEL 2

BUS YARD (BYC)

- MTA Operations
- Administrations
- Training
- MTA Shared Spaces



BUS YARD

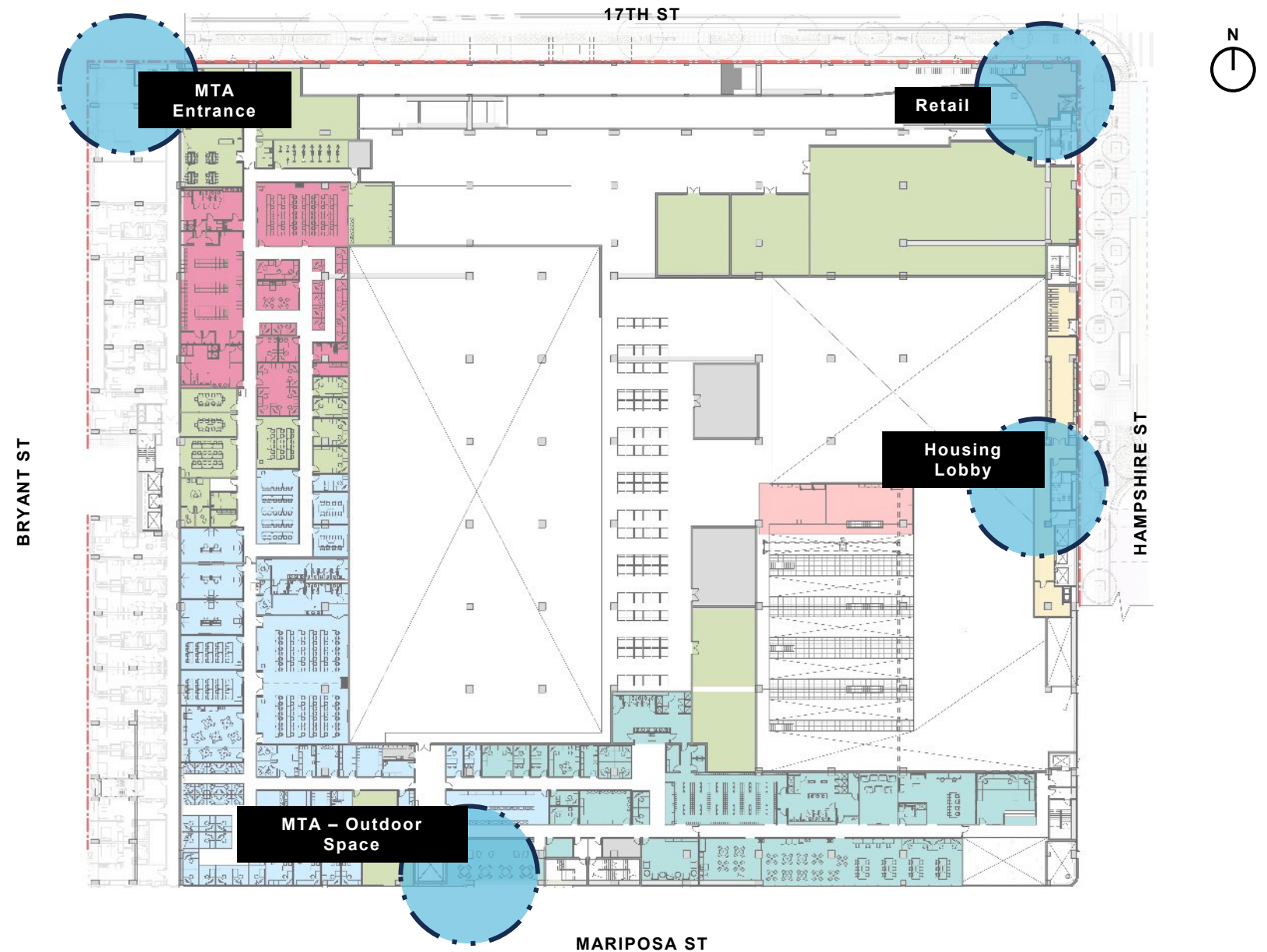
LEVEL 2

BUS YARD (BYC)

- 17th St & Bryant St Entry
- Hampshire St & Mariposa St Entry

HOUSING COMPONENT (HCC)

- Hampshire St Entry



HCC

LEVEL 2

HOUSING COMPONENT (HCC)

- Living Units

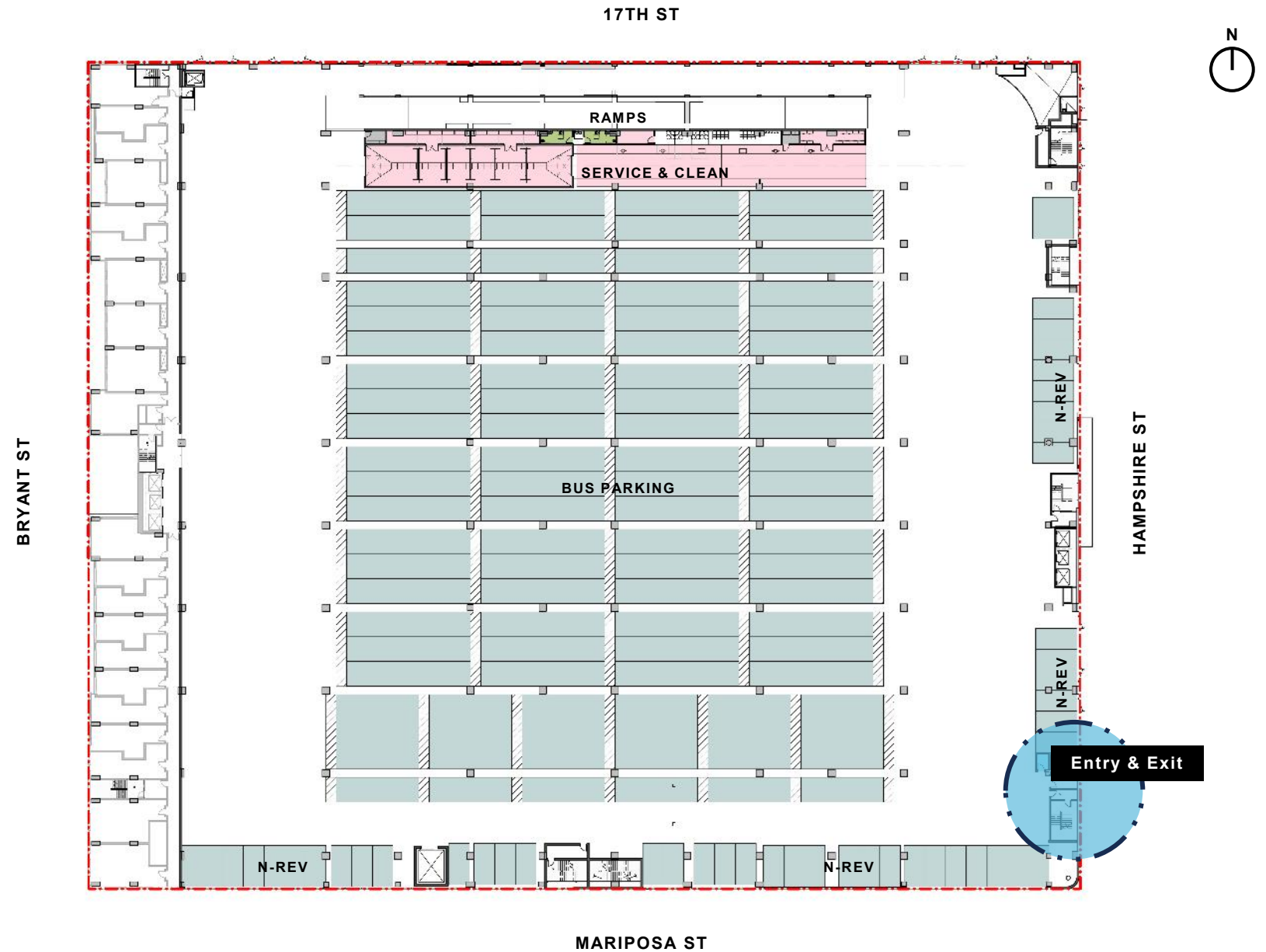


BUS YARD

LEVEL 3

BUS YARD (BYC)

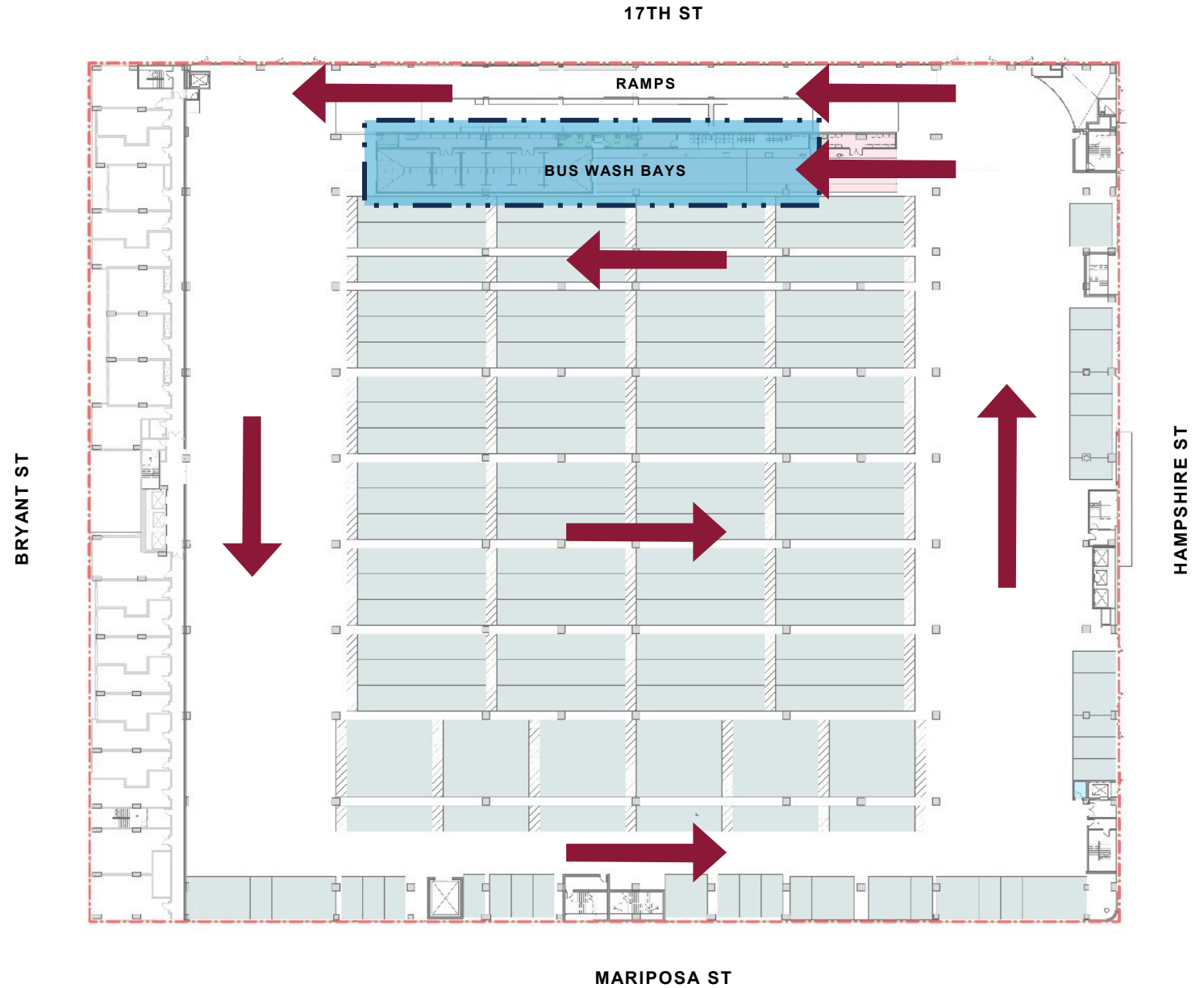
- Bus Parking
- N-REV Parking
- Maintenance Elevator
- Entry/Exit



BUS YARD

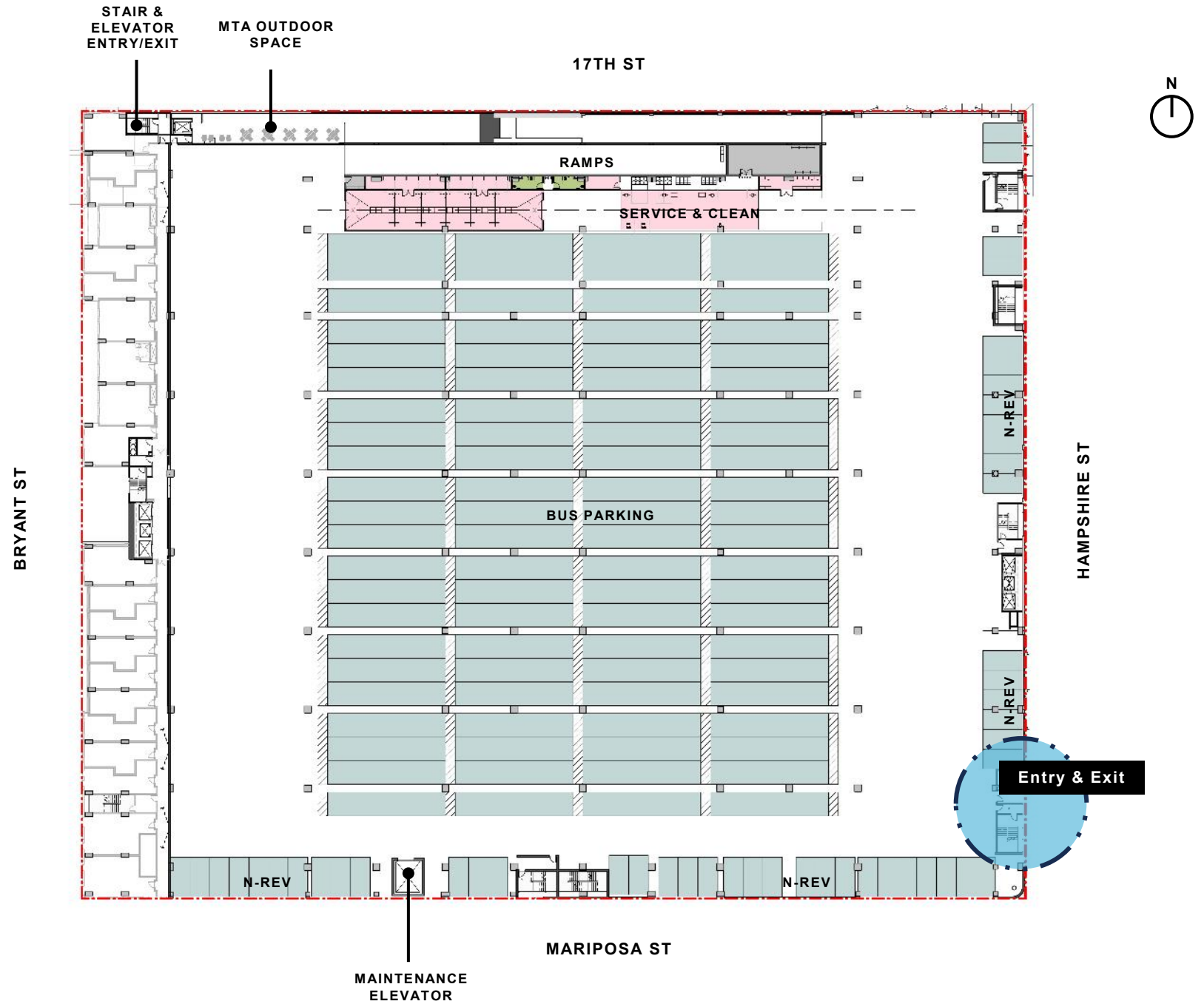
LEVEL 3

- Bus Parking
- Bus Movement & Circulation
- Bus Washing



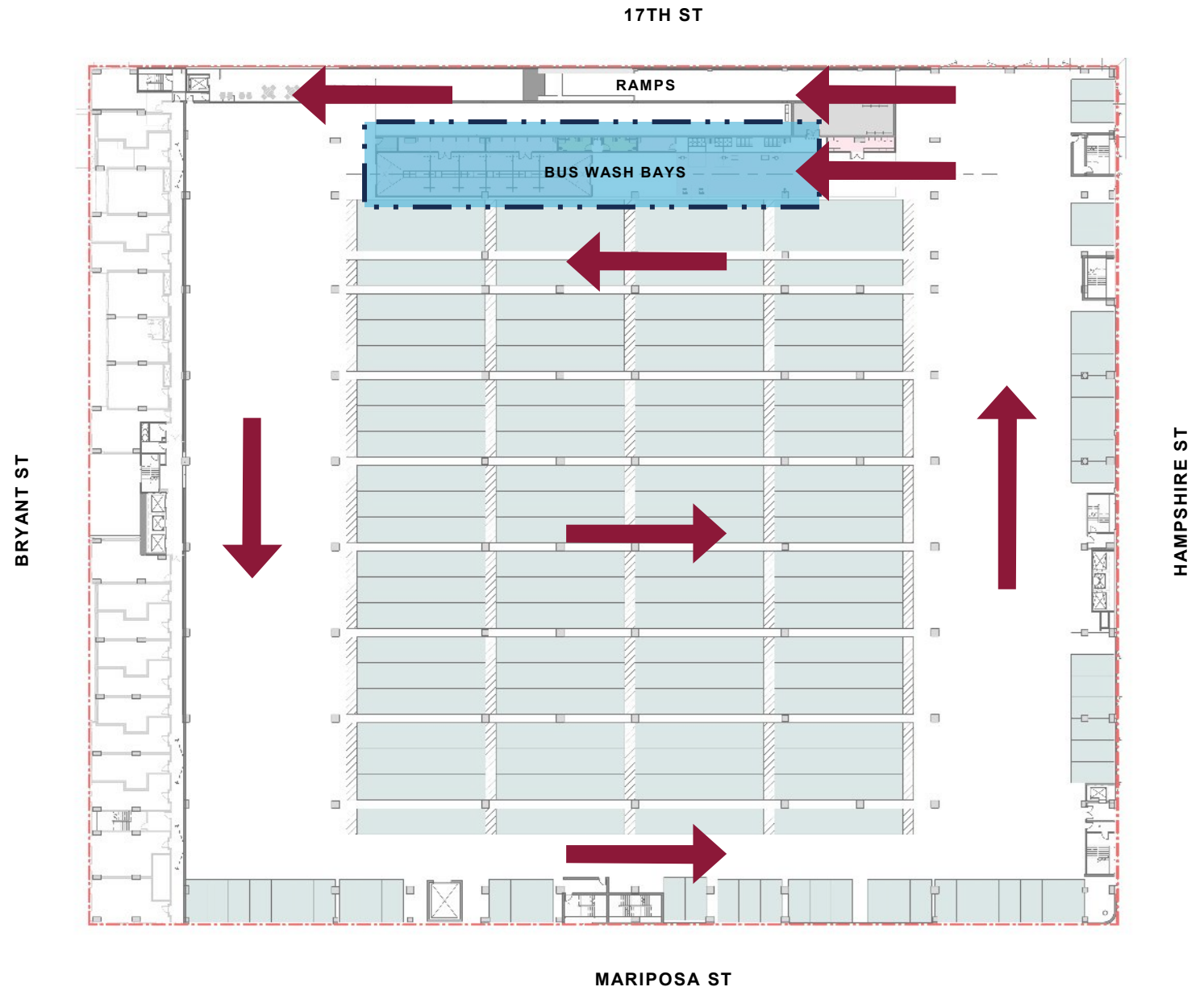
BUS YARD

LEVEL 4

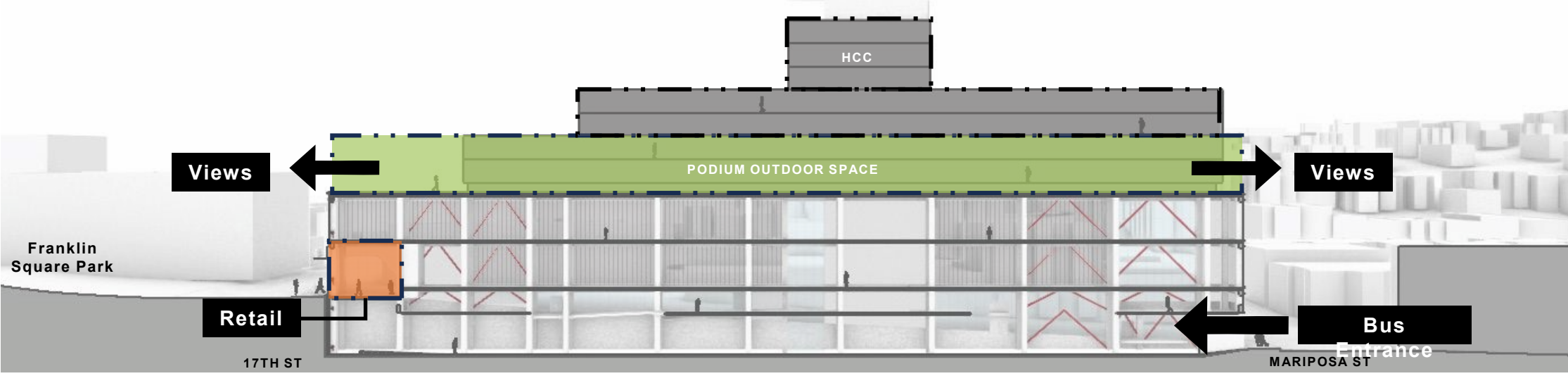
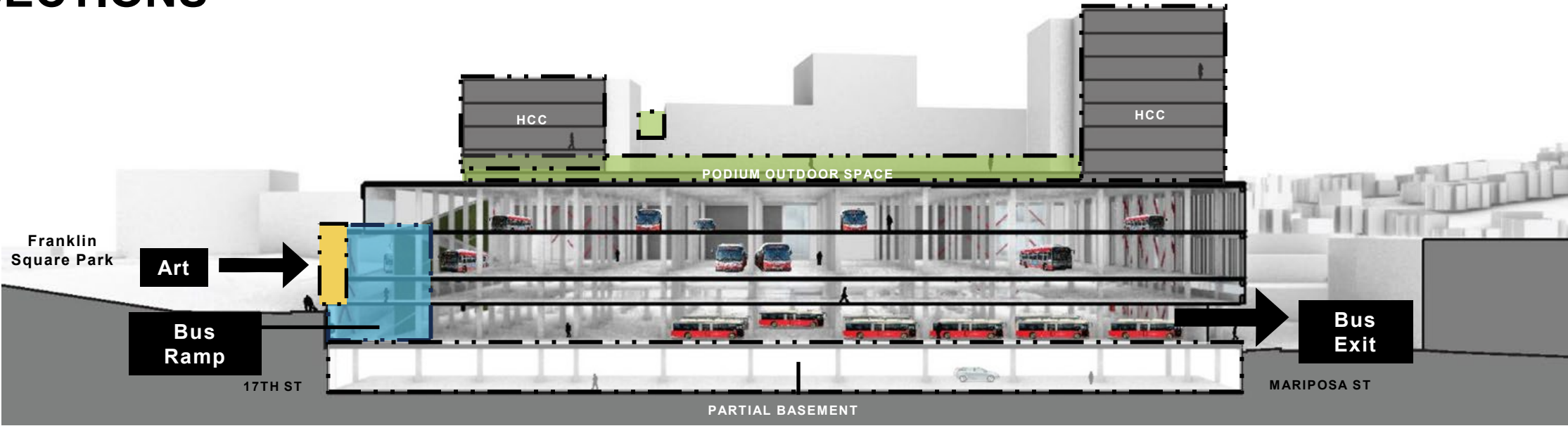


BUS YARD

LEVEL 4



SECTIONS



PODIUM

HOUSING COMPONENT (HCC)

- Living Units
- Outdoor Common Areas
- Activity Spaces



PODIUM

HOUSING COMPONENT (HCC)

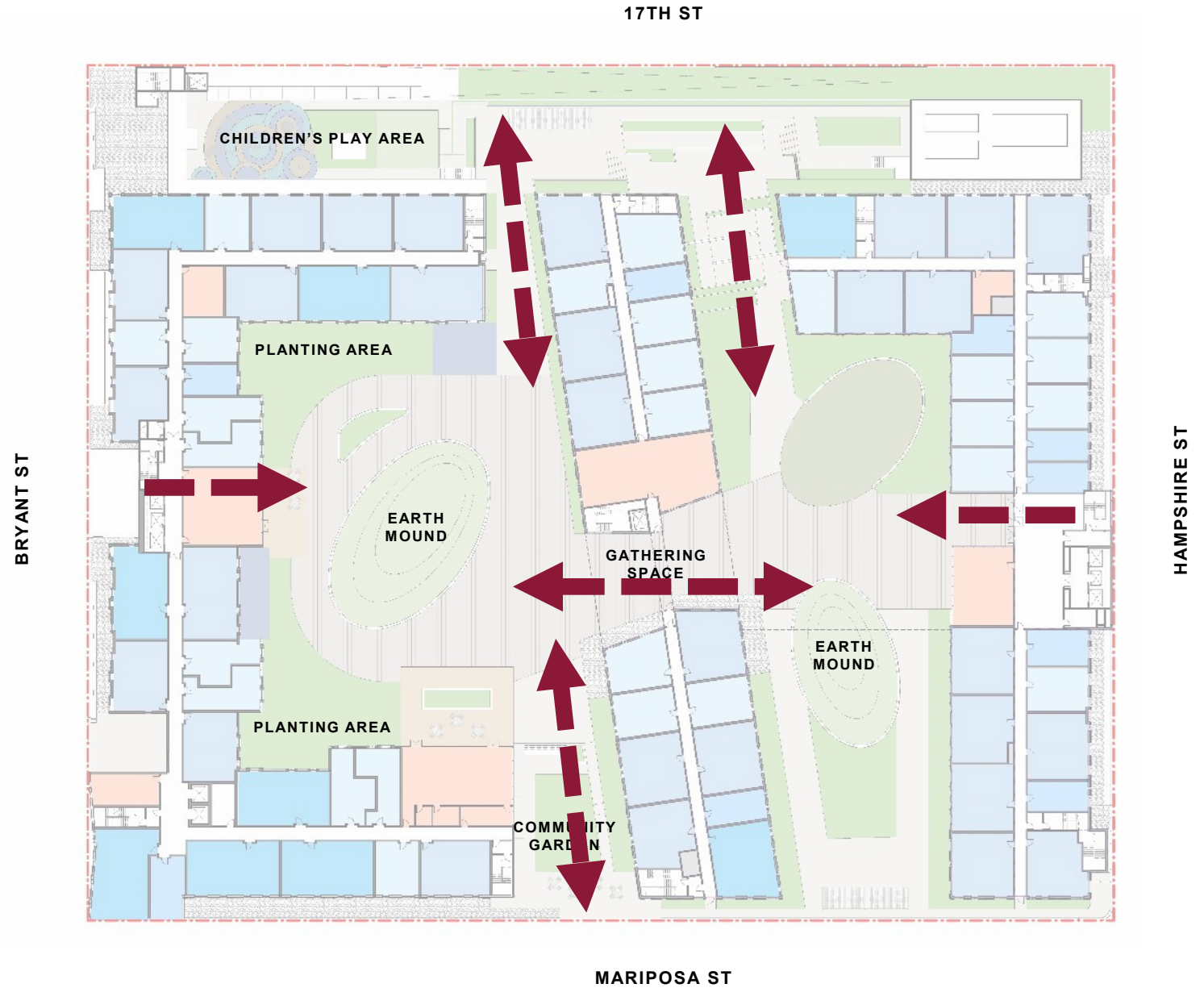
- Bryant St Entry
- Hampshire St Entry



PODIUM

HOUSING COMPONENT (HCC)

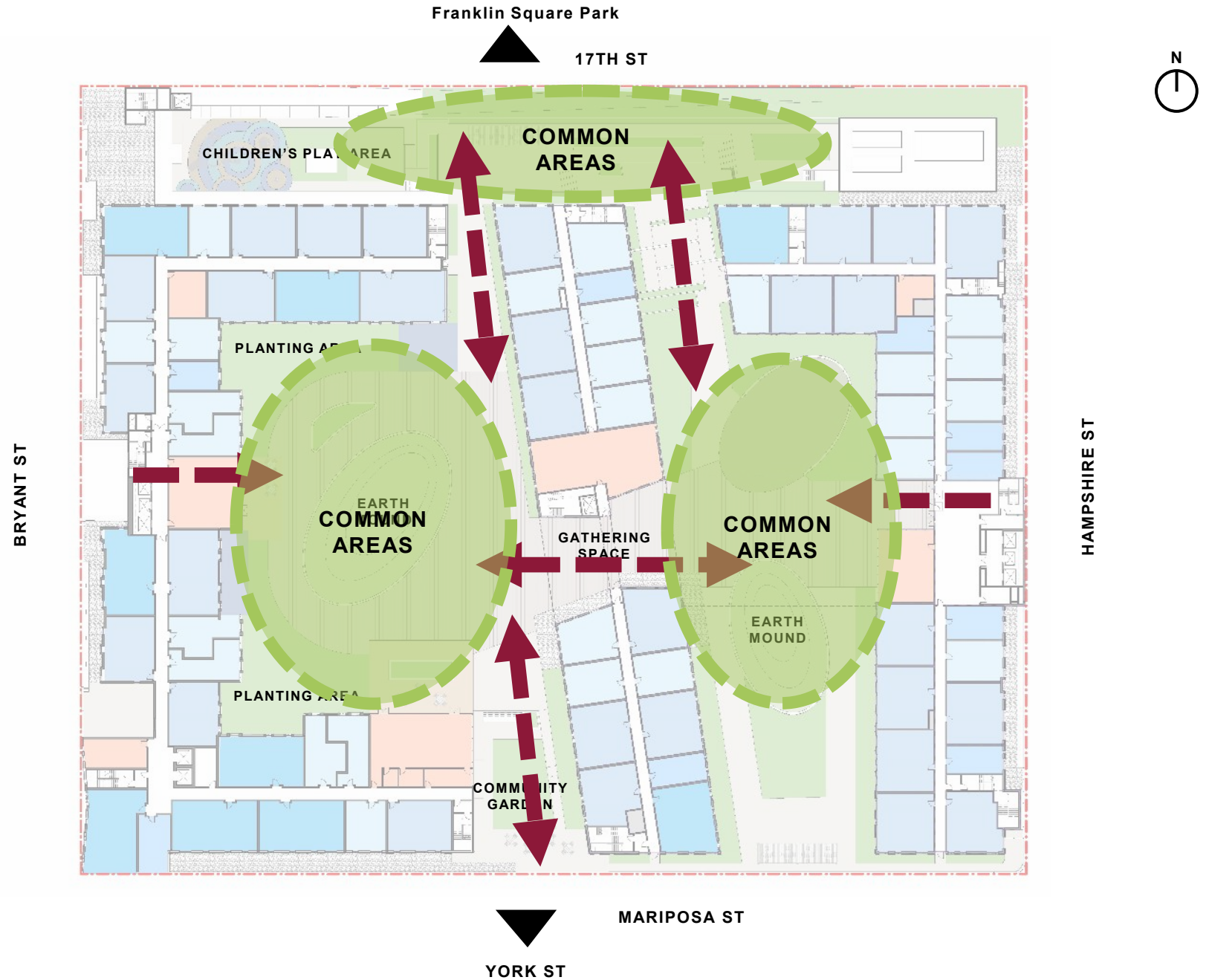
- Connectivity of Common Areas
- Connections (Open)



PODIUM

HOUSING COMPONENT (HCC)

- Connectivity of Spaces
- Connection & Views of Franklin Square Park
- Views South – York St



NORTH ELEVATION

17TH ST



NORTH ELEVATION

WITH ART PROGRAM



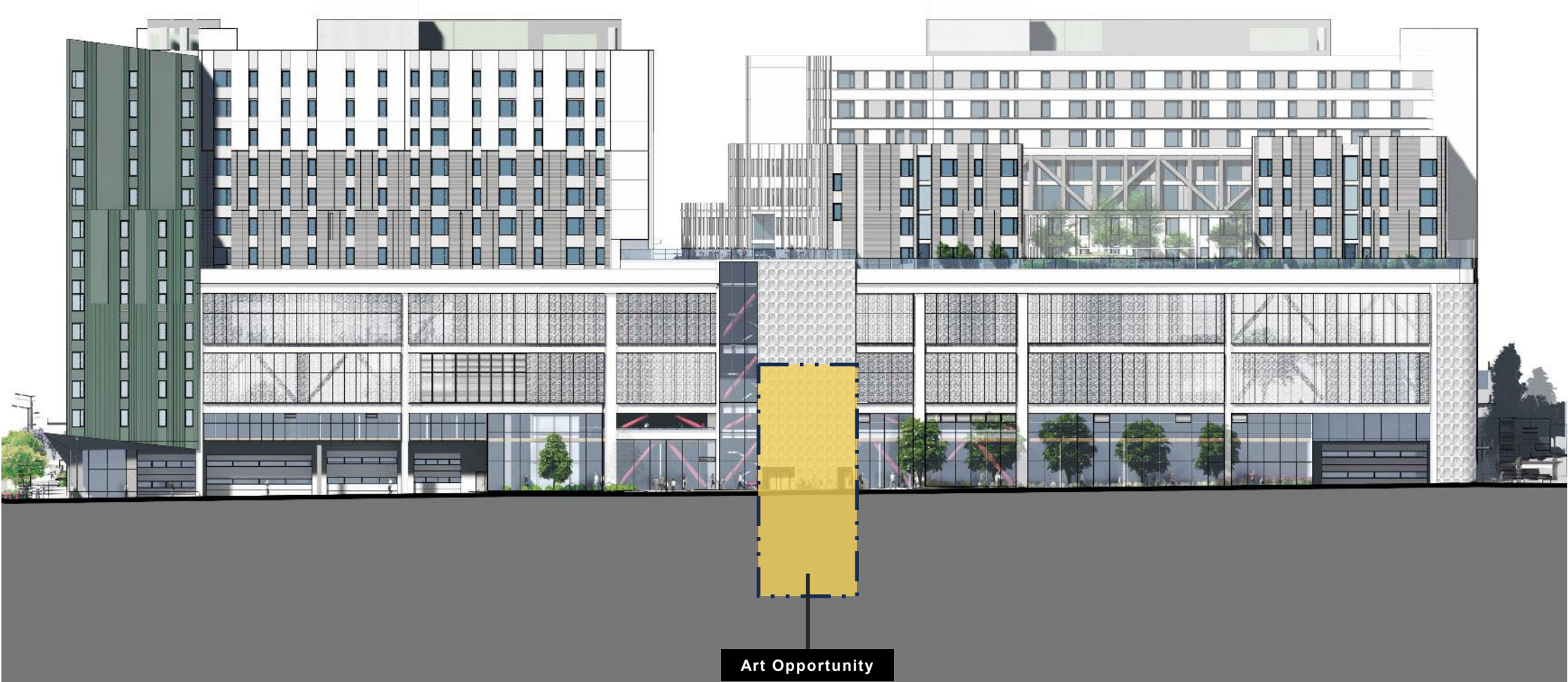
SOUTH ELEVATION

MARIPOSA



SOUTH ELEVATION

WITH ART PROGRAM



EAST ELEVATION

HAMPSHIRE ST



WEST ELEVATION

BRYANT ST



SURVEY RESULTS

CONCRETE & LIGHTING

PNC and the SFMTA conducted a survey of Open Decision Points to the public. The results showed:

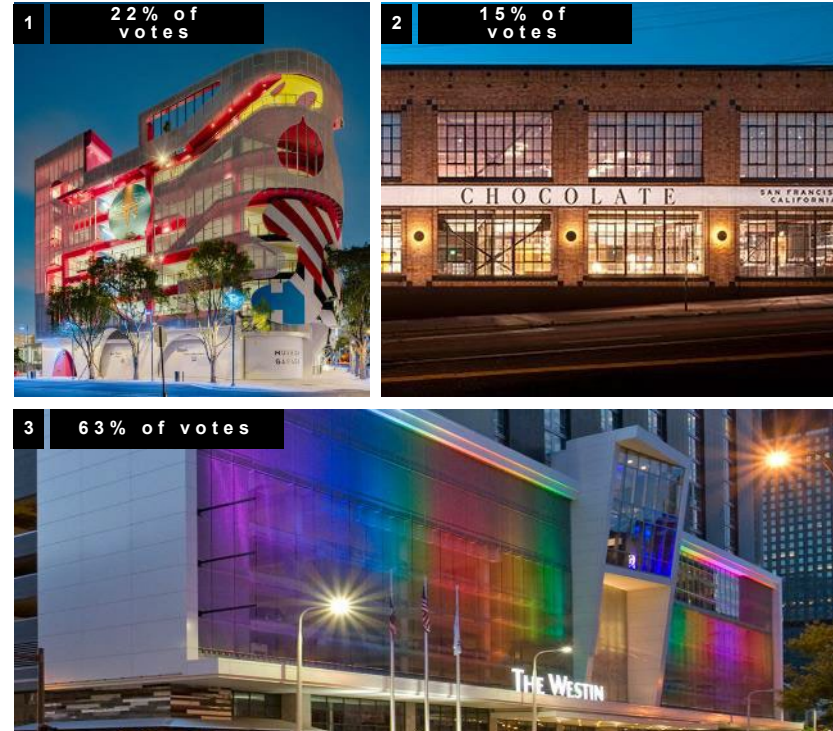
CONCRETE

Most people felt picture #2 was most appropriate for the site:



LIGHTING

Most people felt picture #3 was most appropriate for the site:



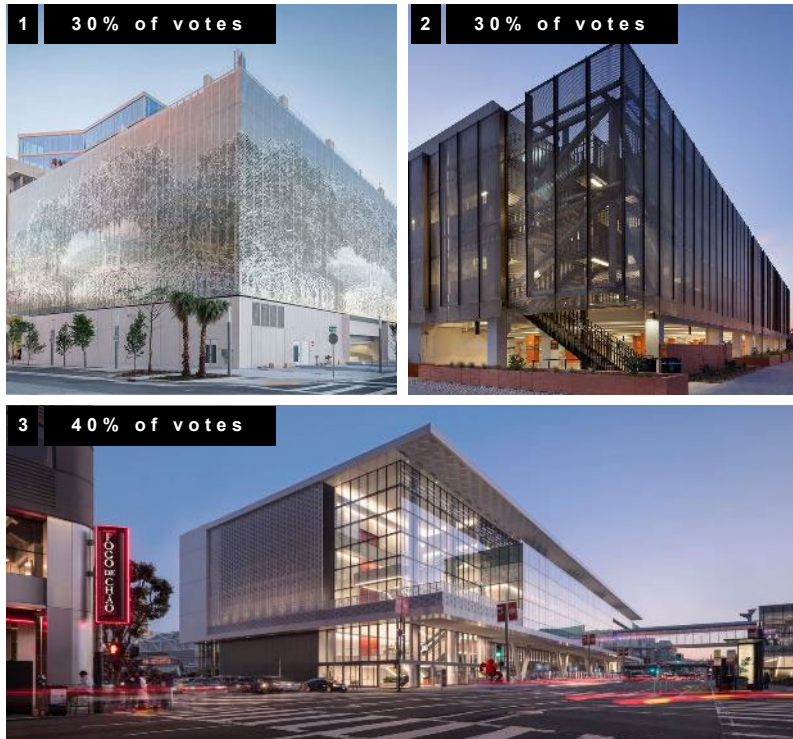
SURVEY RESULTS

GLASS & METAL

PNC and the SFMTA conducted a survey of Open Decision Points to the public. The results showed:

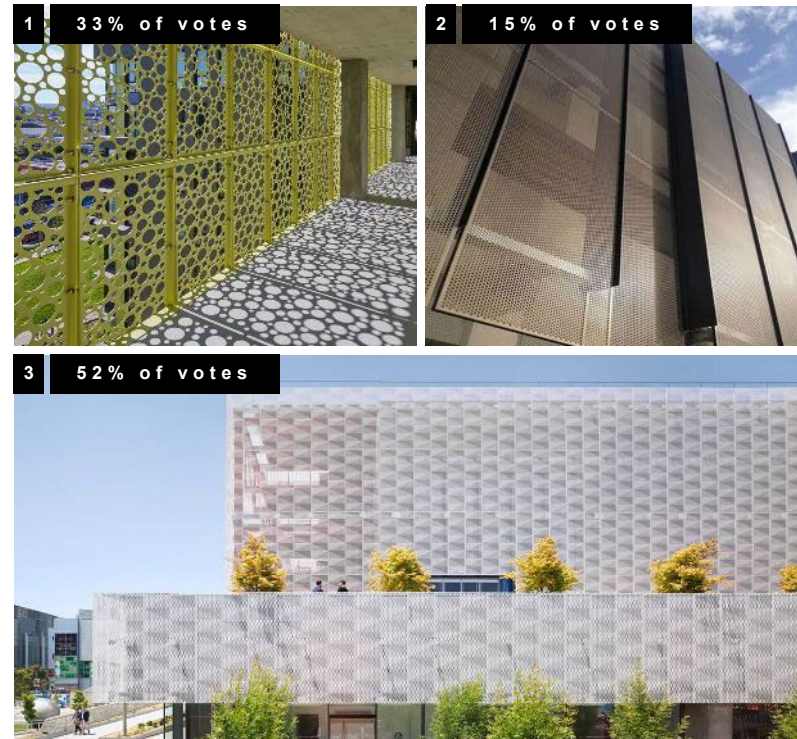
GLASS

Most people felt picture #3 was most appropriate for the site:

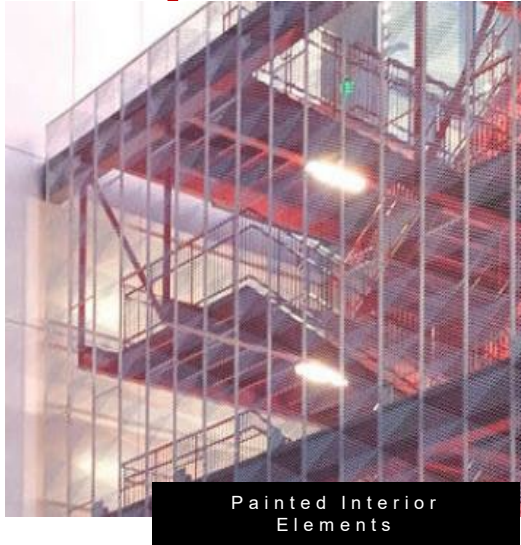
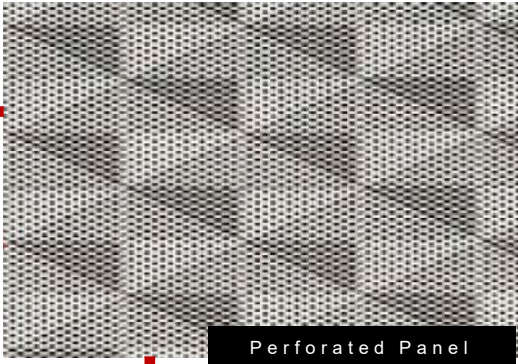
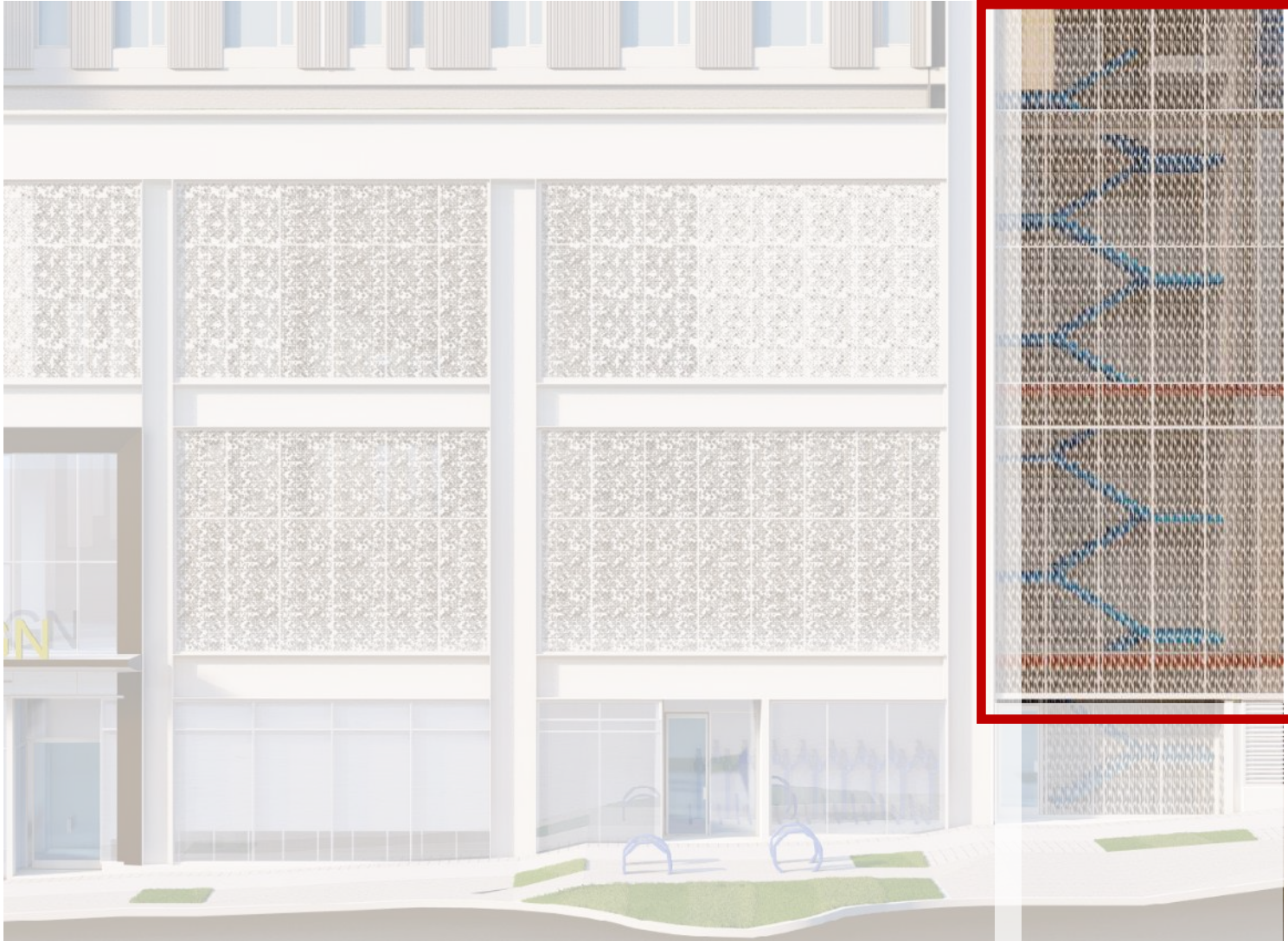
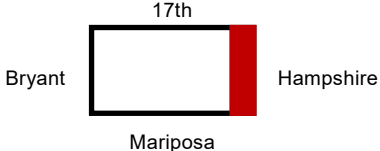


METAL SCREENING

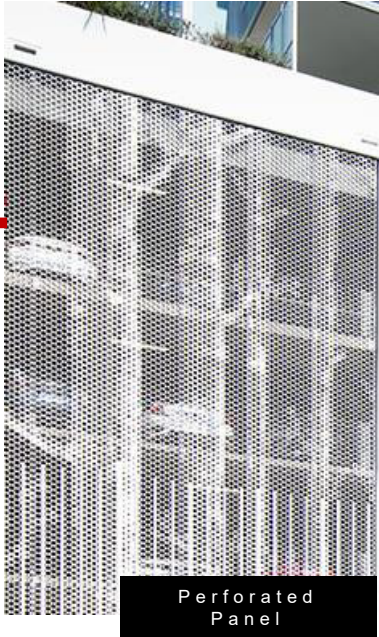
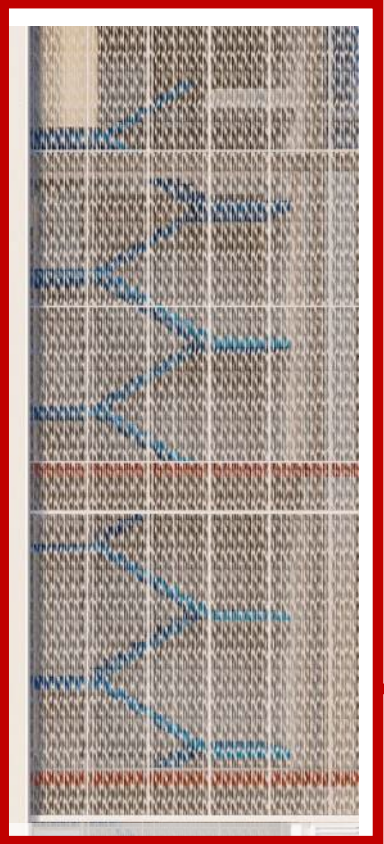
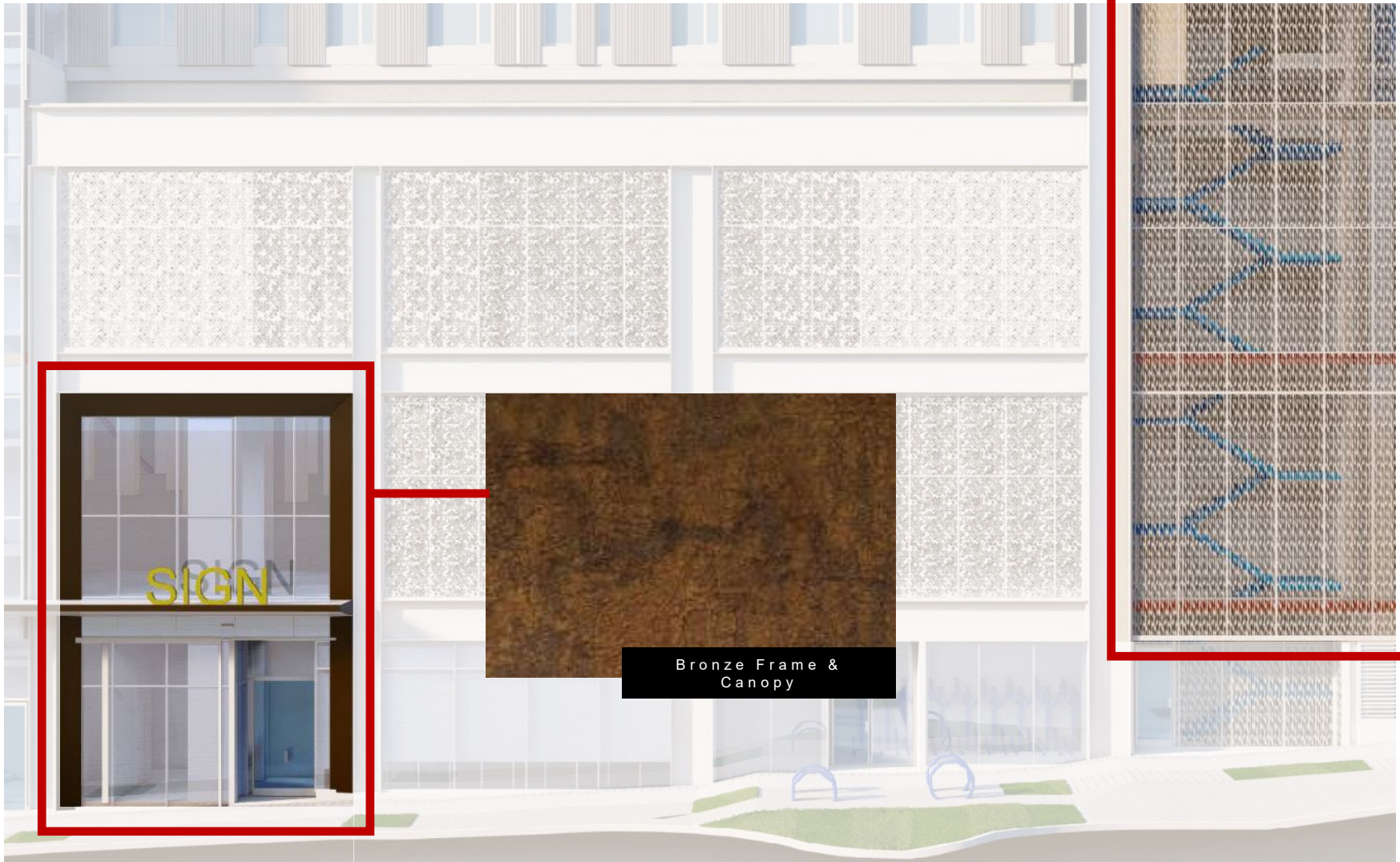
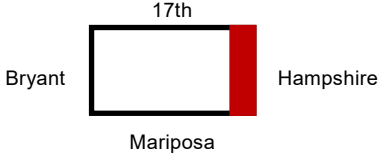
Most people felt picture #3 was most appropriate for the site:



FACADE MATERIALITY

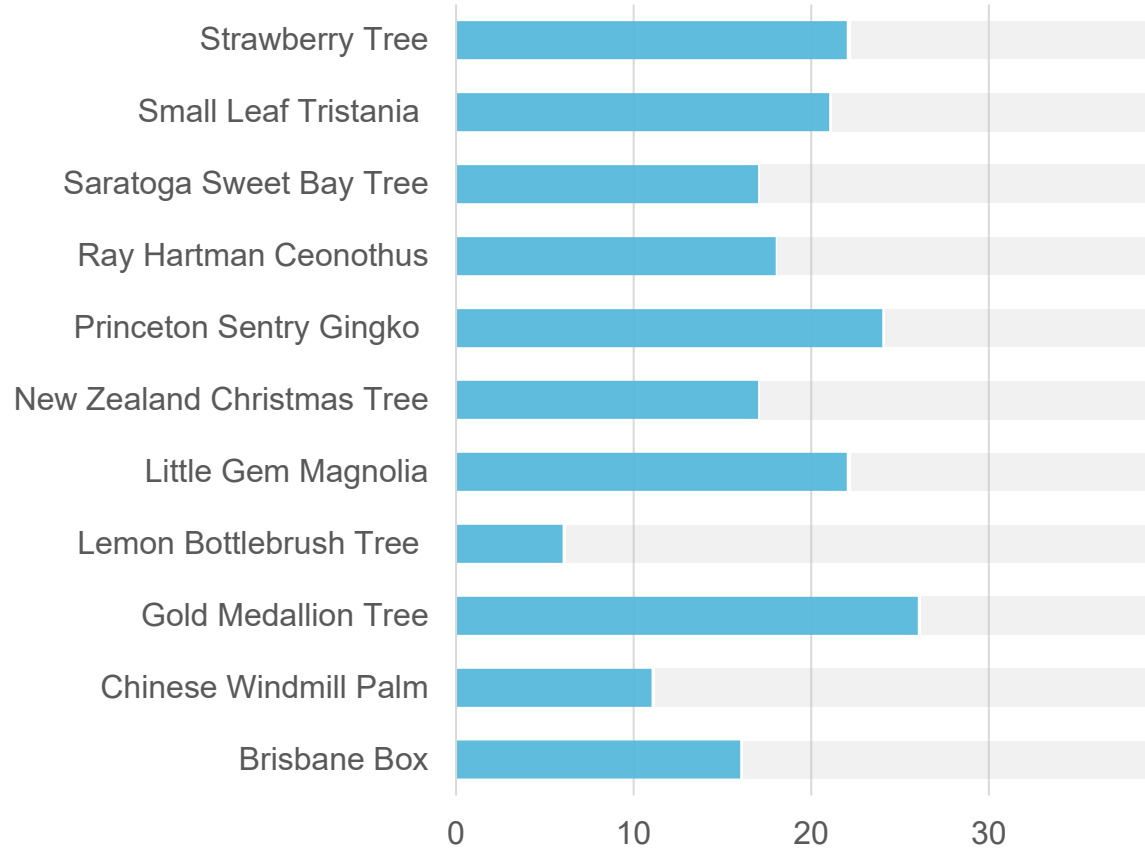


FACADE MATERIALITY



SURVEY RESULTS

TREE SPECIES



The Gold Medallion, Princeton Sentry Gingko and Strawberry Tree were among the most favored tree species for this site.

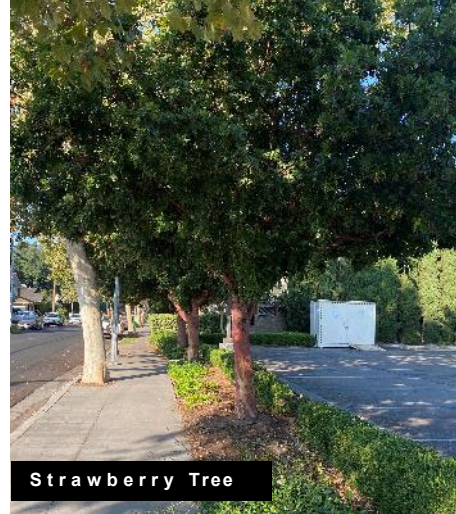


PLANTING PALETTE - TREES

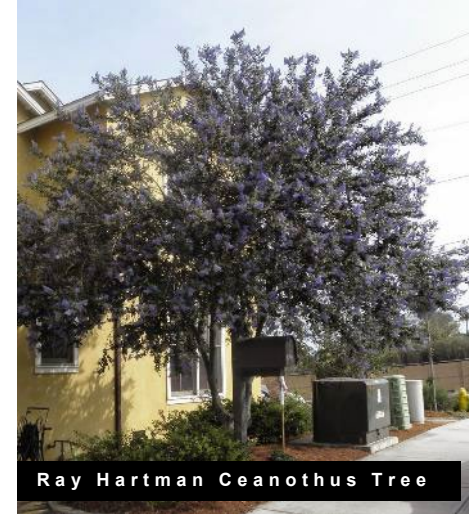
Existing Trees on 17th Street



Gold Medallion Tree



Strawberry Tree



Ray Hartman Ceanothus Tree



Princeton Sentry Ginkgo Tree



Little Gem Magnolia Tree



Jacaranda Tree

PLANTING PALETTE – SHRUBS, GRASSES, PERENNIALS



Dwarf Variegated Mockorange



Mound San Bruno Coffeeberry



Asian Star Jasmine



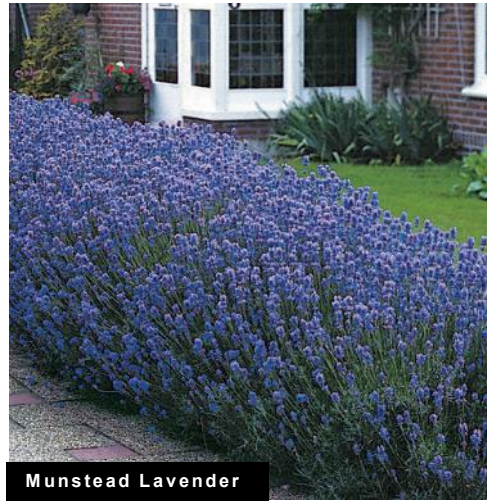
Fortnight Lily



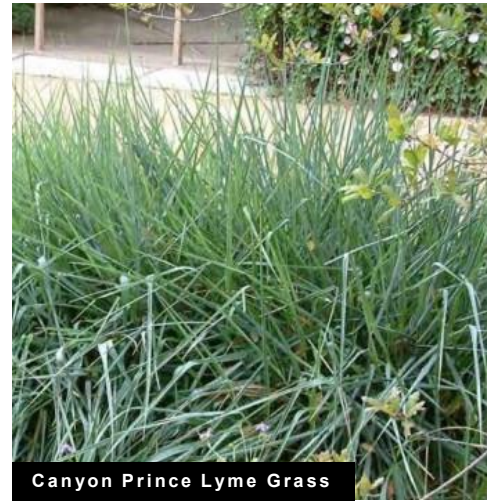
Pardon Me Daylily



Red Yucca



Munstead Lavender



Canyon Prince Lyme Grass



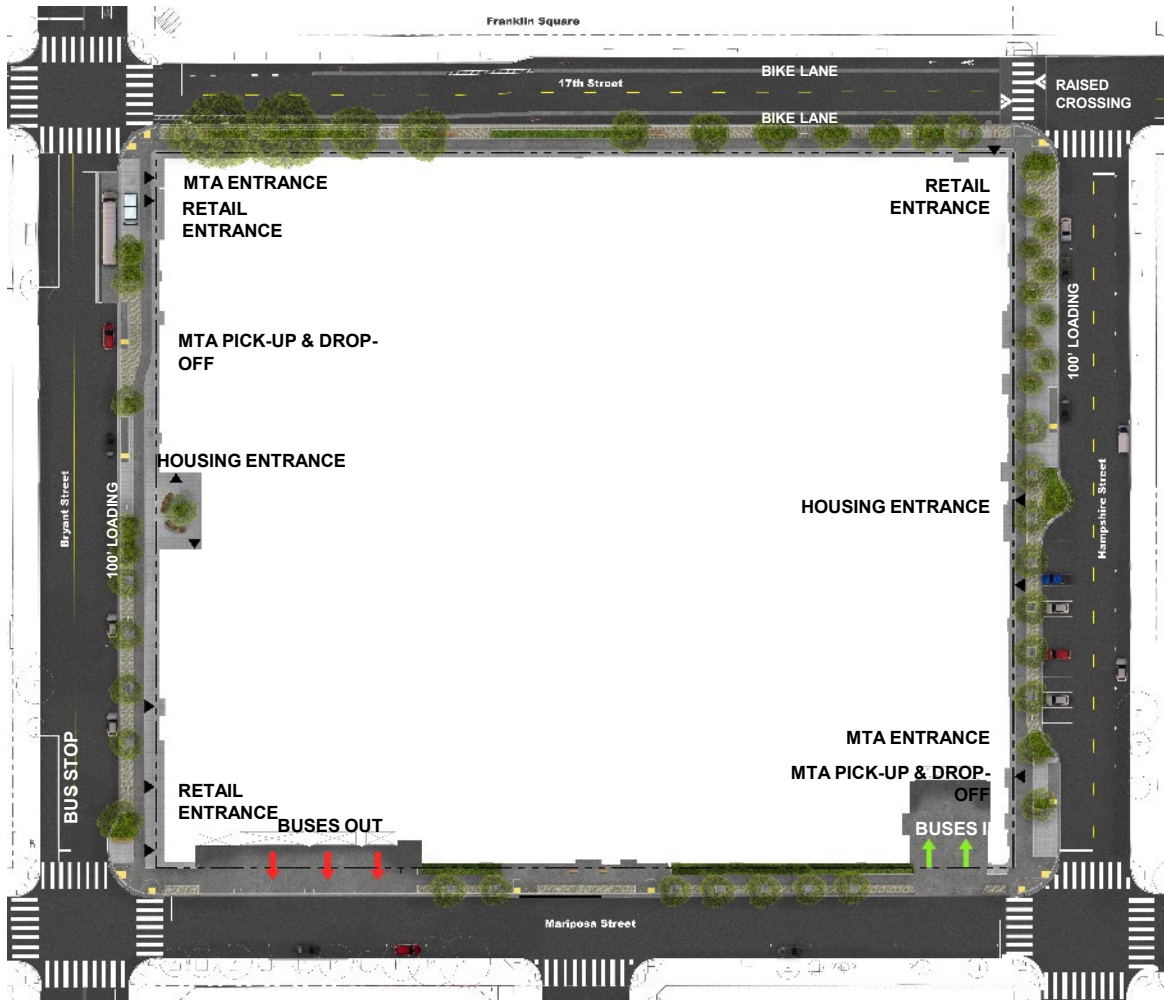
Lomandra

PLANTING PALETTE – FERNS, GRASSES



STREET LEVEL

STREETSCAPE IMPROVEMENTS



LANDSCAPE ENHANCEMENTS

- (8) Existing trees to remain in new planting areas
- (40) Proposed trees in new planting areas
- Enhanced landscapes at housing and bus yard entrances
- Enhanced landscaping on 17th Street between curb & sidewalk

PEDESTRIAN & MOBILITY ENHANCEMENTS

- (37) Bike racks (Square Tube – Arc style)
- (23) Standard benches in seating areas with specialty paving
- (3) Mobile foot cart/ kiosk/flexible open space
- Specialty paving (Frontage Zone & Accent Areas)
- Concrete sidewalk (accessible throughway zone)
- Specialty paving (Furnishing & Edge Zones)
- ADA Transit Stop with Muni Shelter
- On-street parallel parking
- On-street perpendicular parking
- On-street passenger pick-up /drop-off for bus yard
- On-street loading for housing development
- Bus yard vehicular access on Mariposa Street only
- Directional curb ramps and upgraded crossings
- Buffered bike lane on 17th Street

STREET LEVEL

17TH ST

Bike Lanes

Raised Crossings

Franklin Square

17th Street

BIKE LANE

RAISED CROSSING

MTA ENTRANCE
RETAIL ENTRANCE

RETAIL ENTRANCE

KIOSK

KIOSK

KIOSK

Street

Kiosks

Retained Trees



MARIPOSA STREET

PERSPECTIVE



YORK STREET

PERSPECTIVE



BRYANT STREET

PERSPECTIVE



HAMPSHIRE STREET

PERSPECTIVE



HAMPSHIRE STREET

PERSPECTIVE



17TH STREET

PERSPECTIVE



17TH STREET

PERSPECTIVE



17TH STREET

PERSPECTIVE



SFMTA, RETAIL AND PUBLIC RESTROOM

ENTRY



COMMERCIAL

ENTRY



RESIDENTIAL

ENTRY

1881 BRYANT

RESIDENTIAL

ENTRY



PODIUM



PODIUM



PODIUM



PODIUM



PODIUM



PODIUM



PODIUM



VIEW FROM NORTHWEST



PODIUM LANDSCAPE



PODIUM LANDSCAPE



VIEW FROM SOUTHEAST



THANK YOU





SFMTA

Next Steps

Chris Jauregui, Potrero Neighborhood Collective (PNC)



BUILDING PROGRESS

Next Steps

PNC and the SFMTA have the following community outreach activities planned (subject to change):

- Next Working Group meeting: October 3, 2023
- **Public Meeting on September 20, 2023**
- SF County Transportation Authority Community Advisory Committee on September 27, 2023
- Listening Sessions with various community stakeholders including (schedules pending, dates TBD)
- Briefings and focus group sessions with LBE (including Micro-LBE) advocacy organizations and LBEs (schedules pending, dates TBD)



Public Comment

- Do any members of the public wish to comment?
- If you are joining via a computer, please use the raise your hand feature and we will unmute you.
- Joining by phone? We will unmute folks one at a time and call out the last four digits of your phone number.
- Please state your name and organizational affiliation.

BUILDING PROGRESS

Contact Us

John Angelico

Public Information Officer

John.Angelico@SFMTA.com

415.646.4783

Bonnie Jean von Krogh

Building Progress Public Affairs Manager

BonnieJean.vonKrogh@SFMTA.com

415.646.2447

Kerstin Magary

Senior Manager of the SFMTA FIT Facilities and
Strategic Real Estate

Kerstin.Magary@SFMTA.com

Potrero Neighborhood Collective

PotreroYard@plenaryamericas.com

(new email address)

