



SFMTA

# Building Progress: Potrero Yard Neighborhood Working Group

October 2023 | Meeting #37



## BUILDING PROGRESS

# Detailed Agenda

1. Welcome — 5 minutes
2. Member & SFMTA Announcements — 10 minutes
3. Schedule Update – 5 minutes
4. Project Updates: Recent Inreach and Outreach Events – 10 minutes
5. Project Updates: Bike Infrastructure – 45 minutes
6. Project Updates: Housing Update – 10 minutes
7. Public Art Update – 15 minutes
8. Next Steps — 10 minutes
9. Public comment - members of the public who wish to participate in the meeting virtually will be placed on mute, regardless of joining via video or by phone, until the Public Comment section.





# Member and SFMTA Announcements

John Angelico, SFMTA



BUILDING PROGRESS

# Announcements: SFMTA

Sept. 23-24 Muni Heritage Weekend



New SFMTA Podcast



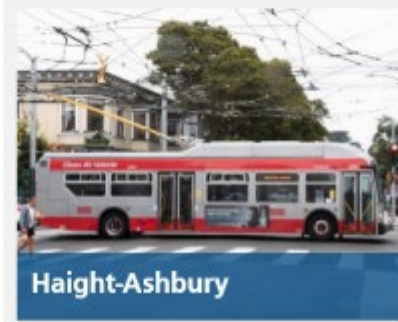
## BUILDING PROGRESS

# Announcements: SFMTA



## Go Local Campaign

Shop, Dine and Explore



[SFMTA.com/GoLocal](https://www.sfmta.com/GoLocal)

## IAP2 USA

## Core Value Awards

### General Project Award

- *Reimagining Potrero Bus Yard*

### Diversity, Inclusion and Culture Core Values Award (and Project of the Year)

- *Honoring Cultural Diversity and  
Connecting Communities: San  
Francisco's Central Subway*



# **Announcements: Working Group**

Working Group members please share upcoming events or activities with the Working Group, SFMTA, and PNC.





# Schedule Updates

Jennifer Trotter, PNC



# BUILDING PROGRESS

## Schedule Updates

As Project design progresses, in September, PNC and the SFMTA:

- Participated in:
  - Fiesta de las Americas (09/16)
  - Transit Month “Moving Pictures: Art and Transit” event with 1890 Bryant Street Studios (9/22)
- Held Listening Sessions with:
  - Hyper Hyper Local Business Group (09/12)
  - San Francisco African American Chamber of Commerce (09/12)
  - SF Bike Coalition (09/21)
  - TogetherSF (09/27)
- Hosted Inreach events with Potrero Yard staff (09/19)
- Hosted a Community Open House at Z Space (09/20)

**Upcoming submittals include:**

- 100% final Schematic Design submit to SFMTA (October 5, 2023)
- Final Environmental Impact Report (FEIR) (anticipated late 2023-early 2024)





# BUILDING PROGRESS Inreach with Potrero Yard Staff



## INREACH EVENTS UPDATE

- 2 early morning sessions
- Staff BBQ open house
- Over 100 staff attended

## BUILDING PROGRESS

# 100% Draft Schematic Design Meeting



## COMMUNITY OPEN HOUSE UPDATE

- About 45 members of the public attended
- Two bus yard tours provided
- All literature made available in English and Spanish
- Live interpretation in Spanish and Chinese made available
- Information from meeting made available on project website this week





# Bike Infrastructure Update

Jennifer Moore, PNC



# Bike Lane Improvements on 17<sup>th</sup> Street

## EXISTING CONDITION

- The existing bike lane is 5' wide and separated by striping and delineator posts for limited portions of the block.
- Bike lane is at road level.



Existing 17<sup>th</sup> Street

# Bike Lane Improvements on 17<sup>th</sup> Street

## EXISTING CONDITION:

### TYPICAL DELINEATOR POST APPLICATION



Source: Separated Bike Lane Planning and Design Guide, Federal Highway Administration



San Francisco, CA (Source: Dianne Yee, Separated Bike Lane Planning and Design Guide, Federal Highway Administration)

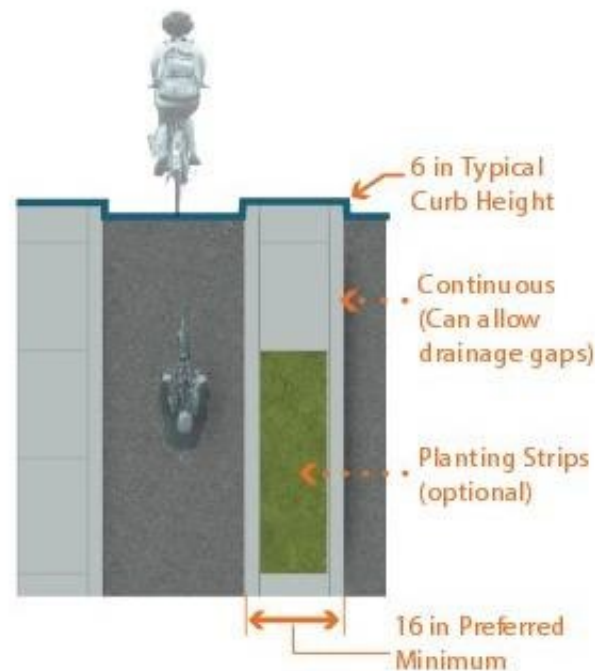
**Delineator Posts:** Flexible delineator posts are one of the most popular types of separation elements due to their low cost, visibility, and ease of installation. However, their durability and aesthetic quality can present challenges and agencies may consider converting these types of buffers to a more permanent style when design and budgets allow. Delineators can be placed in the middle of the buffer area or to one side of the other as site conditions dictate (such as street sweeper width or vehicle door opening).

# Bike Lane Improvements on 17<sup>th</sup> Street

## PROPOSED CONDITION

- Parking removed on north side, allowing for safer bike movements.
- Bike lanes are a minimum of 5' wide but typically 6' in most areas. Width varies due to variation in north curb.
- Bike lane remains at road level, protected by a raised curb (median).
- Concrete curb is 6" high on both sides of 17th Street. It is consistently 2' wide.
- Concrete curb on south side is mountable to allow for emergency vehicle access.

## TYPICAL RAISED MEDIAN APPLICATION



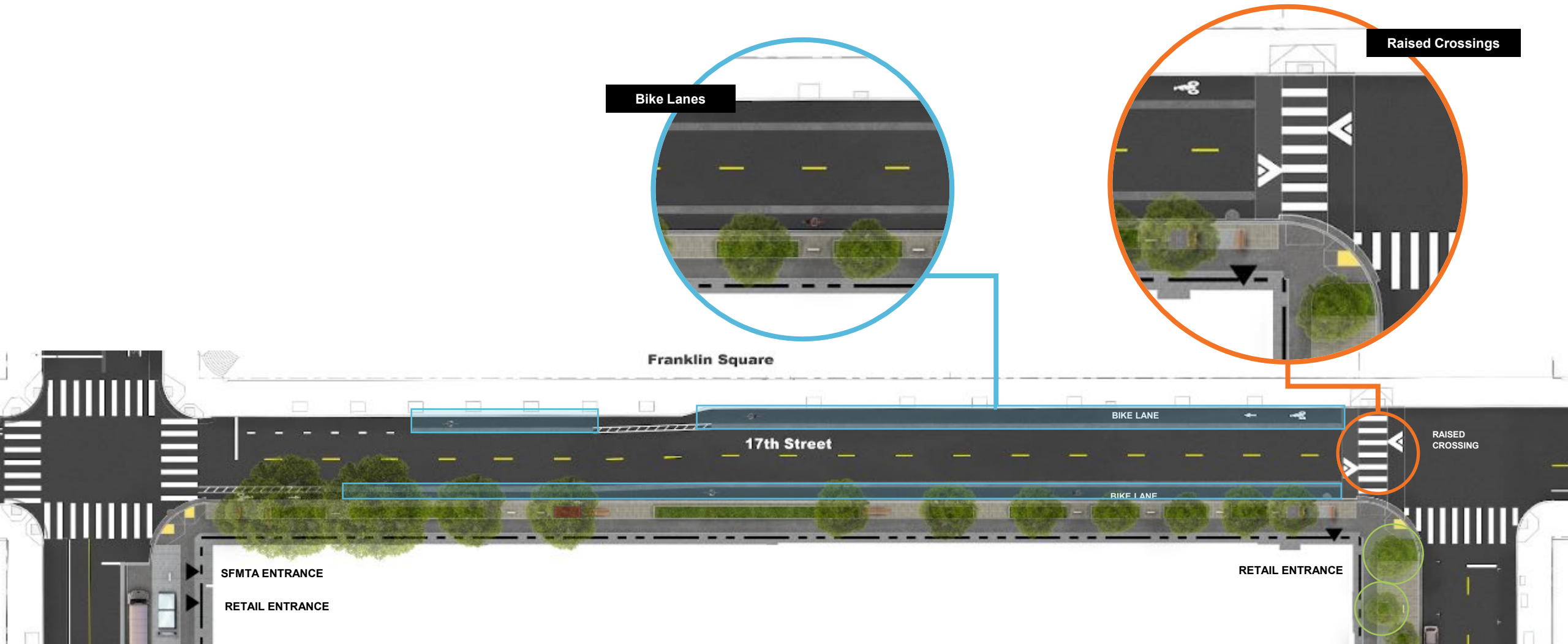
Source: Separated Bike Lane Planning and Design Guide, Federal Highway Administration



Austin, TX (Source: City of Austin, Separated Bike Lane Planning and Design Guide, Federal Highway Administration)

**Raised Median:** Concrete curbs can either be cast in place or precast. This type of buffer element is more expensive to construct and install but provides a continuous raised buffer that is attractive with long-term maintenance required. Mountable curbs are an option where emergency vehicle access may be required.

# Bike Lane Improvements on 17<sup>th</sup> Street



BUILDING PROGRESS

# Bike Lane Improvements on 17<sup>th</sup> Street



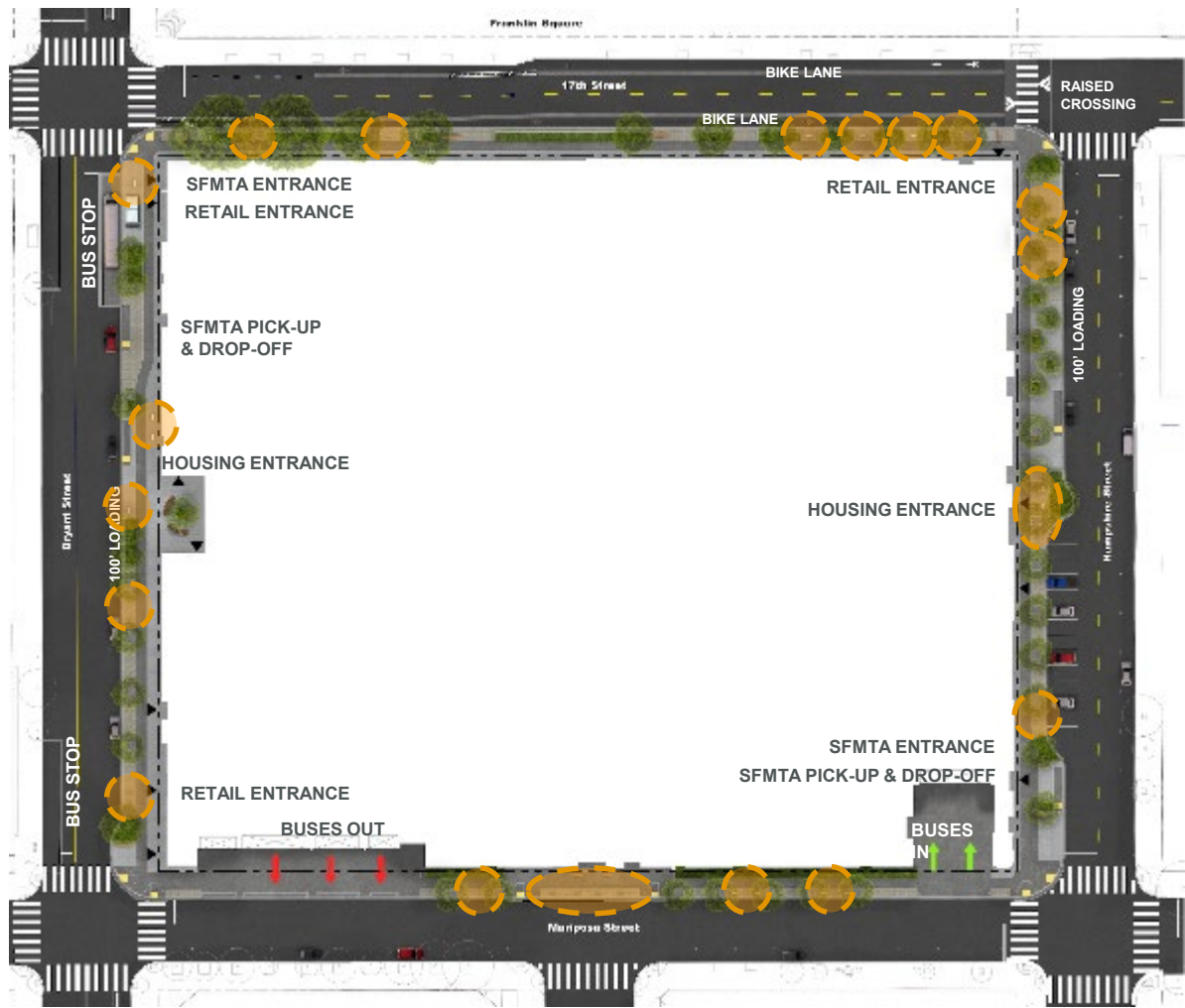
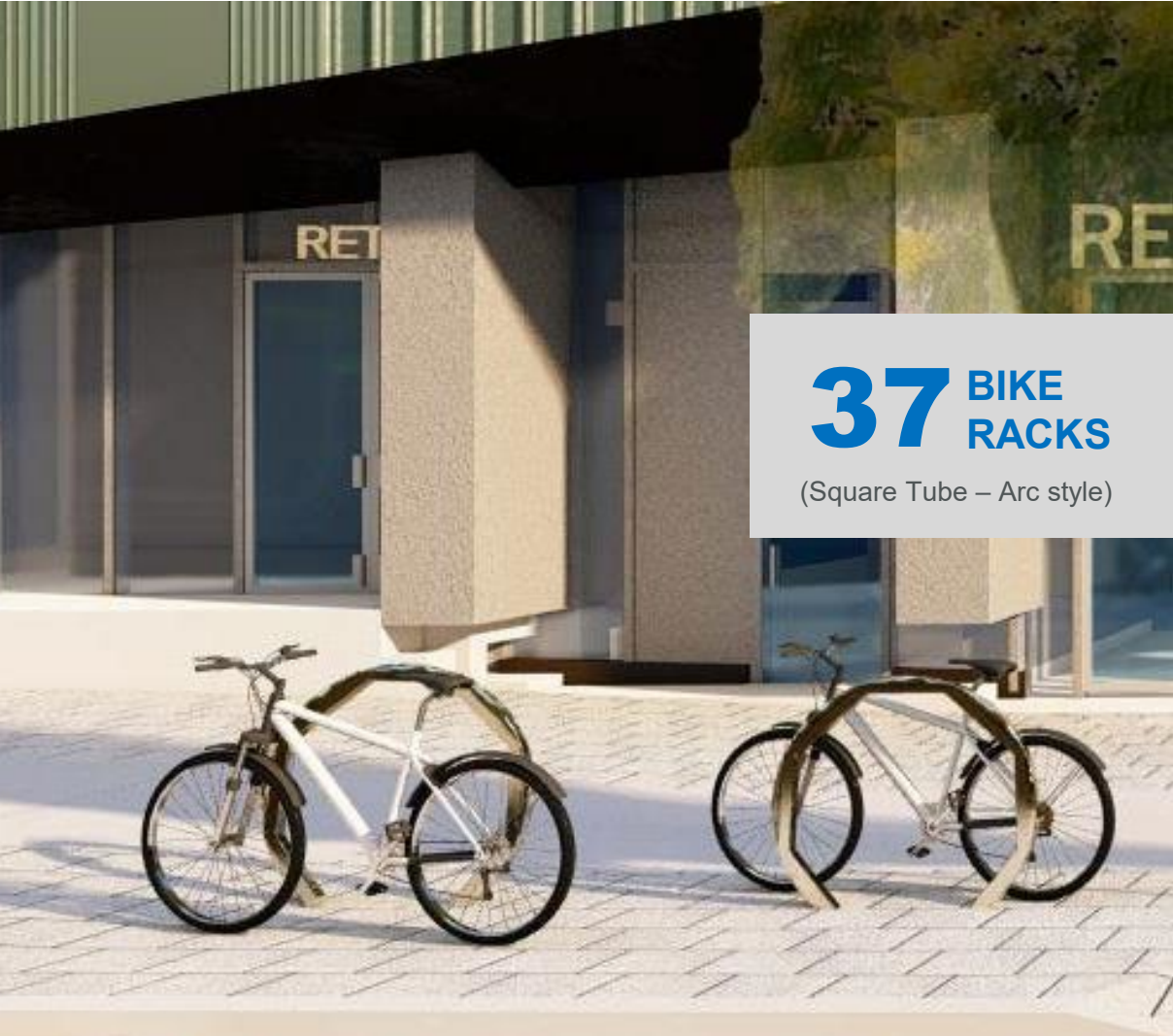


BUILDING PROGRESS

# Sidewalk Improvements on 17<sup>th</sup> Street



# Short Term Bike Parking (Class Two)

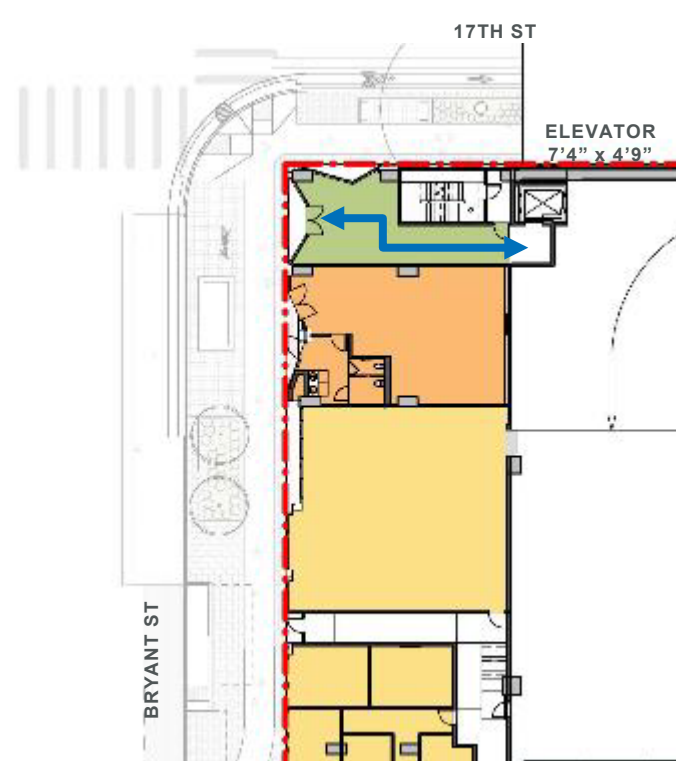


# Long Term Bike Parking (Class One): Basement

## BASEMENT LEVEL

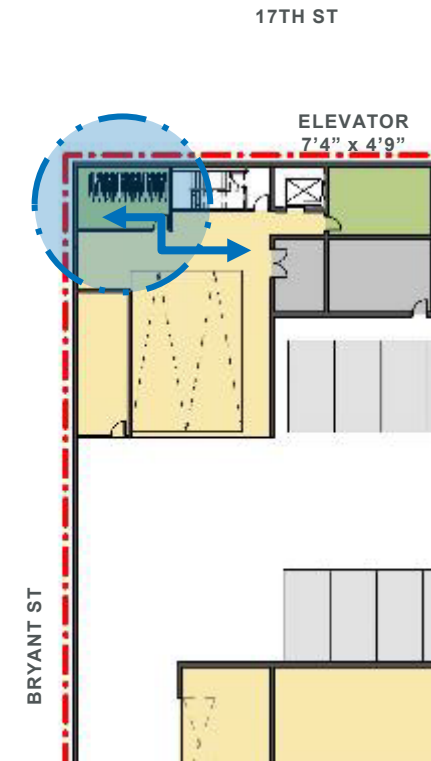
### SFMTA EMPLOYEE LONG TERM BIKE PARKING

- 264 sq ft
- Required: 13 Stalls
- Proposed: 24 Stalls



ENTER AT STREET LEVEL

**STREET LEVEL**  
Enter on Bryant Street and take elevator to Basement level



PARK AT BASEMENT LEVEL

**BASEMENT LEVEL**  
Park in designated room on basement, adjacent to elevator

# Long Term Bike Parking (Class One): Bryant Street Housing

## GROUND LEVEL

### AFFORDABLE AND SENIOR HOUSING LONG TERM BIKE PARKING

- 1,753 sq ft
- Required: 135 Stalls
- Proposed: 140 Stalls



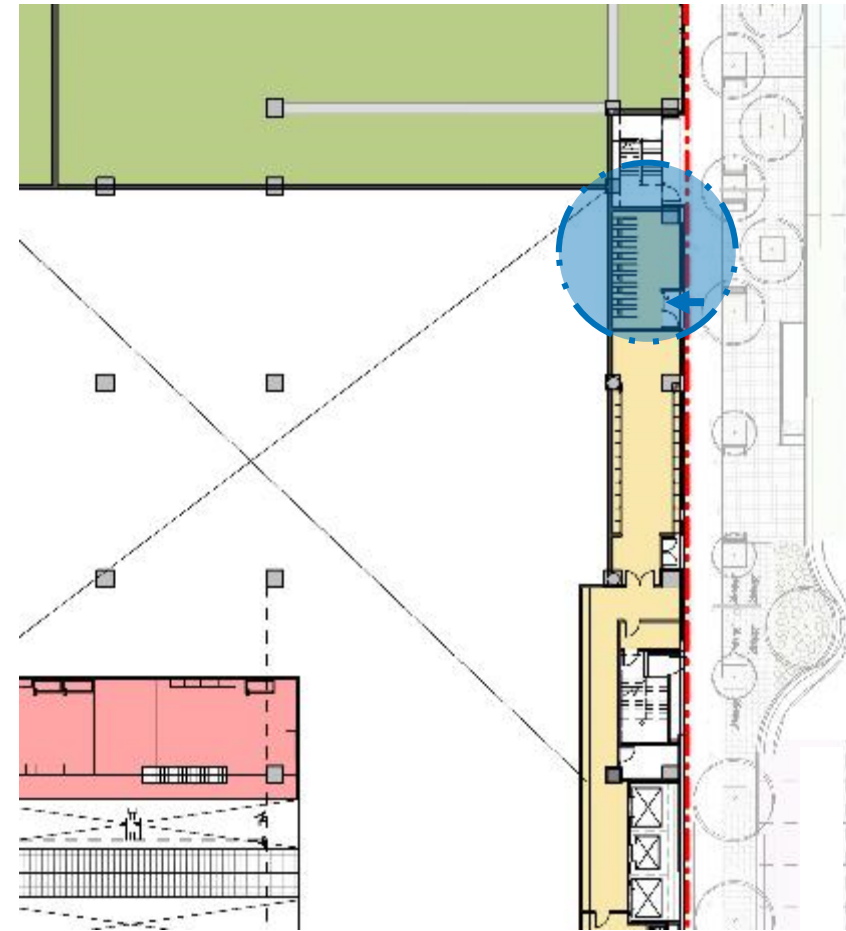
**STREET LEVEL –**  
Enter on Bryant Street near bus stop to access ground floor bike parking

# Long Term Bike Parking (Class One): Hampshire Street Housing – Level 2

LEVEL 2

## WORKFORCE HOUSING LONG TERM BIKE PARKING

- 300 sq ft
- Required: 130 Stalls
- Proposed: 36 Stalls on Level 2  
(+ 132 provided on Level 7 Podium)



STREET LEVEL  
Enter bike room on Hampshire Street

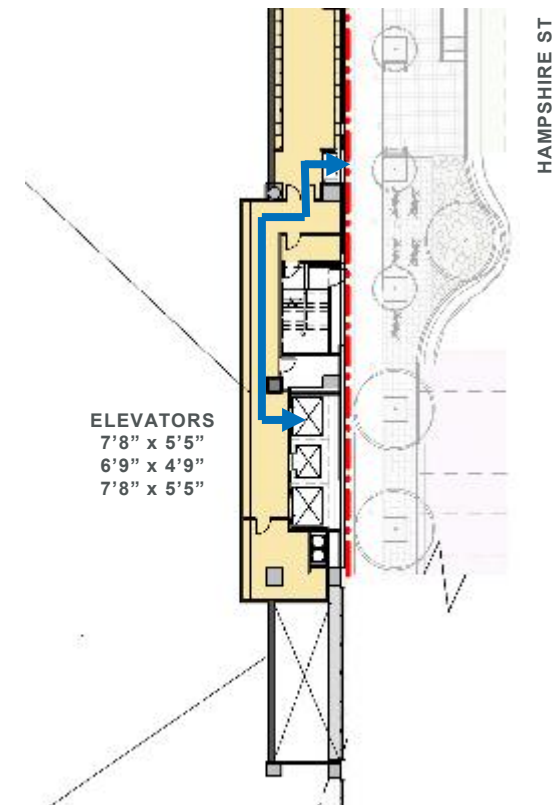
## TRANSPORTATION

# Long Term Bike Parking (Class One)

### PODIUM LEVEL

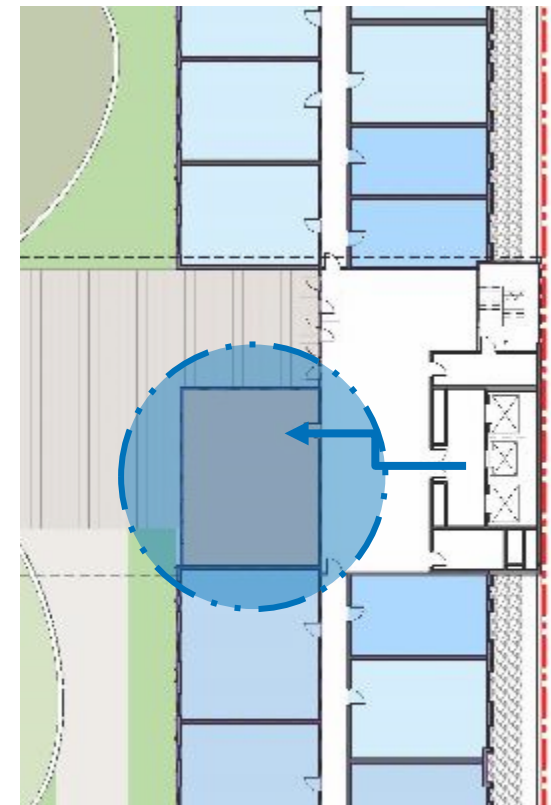
## WORKFORCE HOUSING LONG TERM BIKE PARKING

- 1,085 sq ft
- Required: 130 Stalls
- Proposed: 132 Stalls on Level 7 Podium (+ 36 provided on Level 2)



ELEVATORS  
7'8" x 5'5"  
6'9" x 4'9"  
7'8" x 5'5"

**STREET LEVEL**  
Enter on Hampshire Street and take elevator to Podium level (level 7)



ELEVATORS  
7'8" x 5'5"  
6'9" x 4'9"  
7'8" x 5'5"

**PODIUM LEVEL**  
Park in designated room on podium, adjacent to elevator



# Housing Update

Seth Furman, PNC



## BUILDING PROGRESS

# Bryant Street Housing Type Exploration

The PNC Team is **committed to maximizing the amount of affordable housing** at Potrero Yard and continues to work toward securing the entitlements and CEQA approvals to do so.

To ensure that Potrero Yard is **as competitive as possible** for local, state, and federal funding opportunities that we will begin to apply for in early 2024, MY-T\* is exploring the possibility of transitioning the first affordable housing building from a Senior-Only property to an All-Family property.

This adjustment, if agreed upon, **would not increase the overall unit count nor affect the Potrero Yard Design Guidelines.**



\*MY-T is PNC's affordable housing developers including Mission Economic Development Agency (MEDA), Young Community Developers (YCD), and Tabernacle Community Development Corporation (TCDC).







SFMTA

# Public Art – Community Representative

Bonnie Jean von Krogh, SFMTA



## BUILDING PROGRESS

# Composition of Artist Review Panels

- There will be two (2) Artist Review Panel processes: one for glass opportunities and one for the mosaic tile opportunity
- Each panel composition will include the following seats:
  - One (1) Arts Commissioner
  - One (1) SFMTA Representative
  - One (1) PNC Representative
  - One (1) Community Representative
    - Can be shared by two members who together have one vote
  - Three (3) Arts Professionals



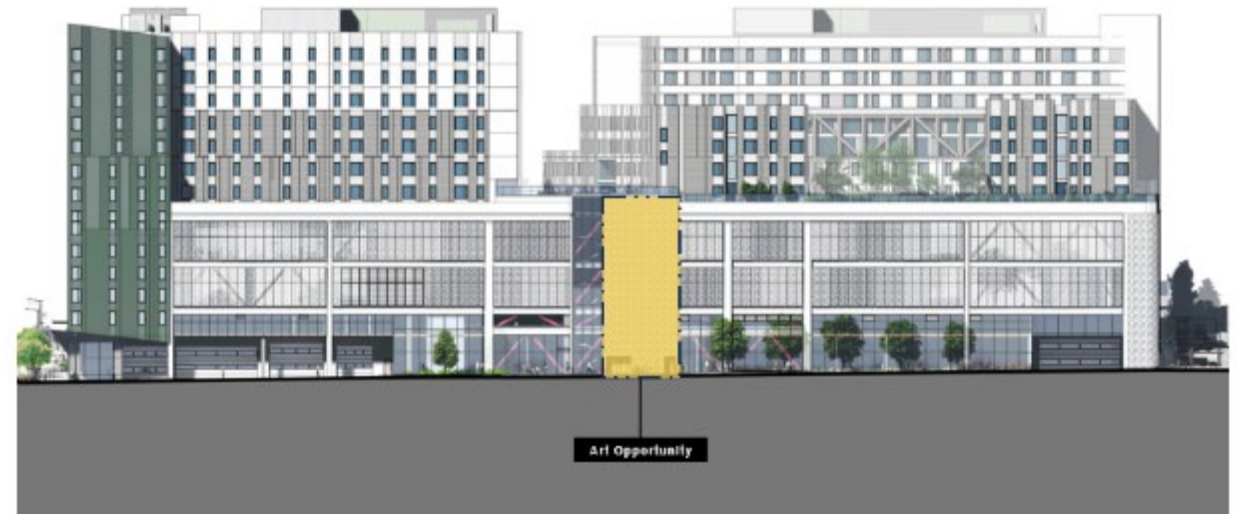
Proposed glass and mosaic tile public art opportunities on 17<sup>th</sup> Street (North Elevation)

## BUILDING PROGRESS

# Participation in Artist Review Panels

Two ways to participate:

- The same Community Representative(s) can serve throughout the entire process for both glass and mosaic tile opportunities
- Or the Artist Review Panel processes for glass opportunities and the mosaic tile opportunity can be split between different Community Representative(s)
- Each Community Representative Panelist(s) would be compensated (\$50/hour)



Proposed glass public art opportunity on Mariposa Street (South Elevation)

RFQ and  
Qualification  
Panel



Artist Review  
Panel One



Proposal  
Development and  
Review Phase



Final Artist  
Review Panel

#### Artist Review Panel One

- Reviews 15 - 30 artist applications shortlisted by Artist Qualification Panel based on the scoring criteria provided.
- Identifies three (3) finalists who will be invited to develop site-specific conceptual proposals for each artwork opportunity.



*Rũupaywa: Songs of the Watershed (2023) by Walter Kitundu at the Alameda Creek Watershed Center*

#### Panel Composition\*

- One (1) Arts Commissioner
- One (1) MTA Representative
- One (1) PNC Representative
- One (1) Community Representative
- Three (3) Arts Professionals

*\*Same panelists will serve on Review Panel Two.*

#### Time Commitment

- Two (2) 4-hour panel meetings (one for glass opportunities, one for mosaic opportunity).
- 1-2 hours prior to first panel meeting to review panelist onboarding materials.

RFQ and  
Qualification  
Panel



Artist Review  
Panel One



Proposal  
Development and  
Review Phase



Final Artist  
Review Panel

### Artist Orientation Meeting

- Artists Finalists will attend an Orientation Meeting arranged by Commission staff with representatives of the Client agency, Architect Design Team, and Community Representatives.
- All Review Panel members are invited to participate in the orientation meetings. Participation is voluntary.
- Orientation meetings involve a site visit and review of project background materials. The orientation meeting is typically 2-3 hours in duration.



Artist Orientation Meeting for Alameda Creek Watershed Project (2019)

- To ensure that artists propose feasible and durable artwork of the highest aesthetic quality, staff reviews the development of artwork proposals prior to any public display or submission to the Review Panel.
- Proposals are posted on the Arts Commission website for 2 weeks to allow for public comment. Proposal boards will also be placed on public view at an accessible public location in the neighborhood, as determined in coordination with SFMTA.
- Public comment will be provided to the Review Panel for their consideration. Public comment is not a vote and should not be intended as an accurate representation of the community's preference.

RFQ and  
Qualification  
Panel



Artist Review  
Panel One



Proposal  
Development and  
Review Phase



Final Artist  
Review Panel

#### Artist Review Panel Two

- Artist Finalists present their proposals and are interviewed by the panel.
- SFAC Public Art Project Manager presents a summary of public comments received on the proposals and results of artist reference checks.
- After deliberation and scoring, one (1) artist finalist/proposal is selected for recommendation to the Arts Commission for each artwork opportunity.



*Number 695 (2019) by Leonardo Drew at SFO Harvey Milk Terminal One*

#### Panel Composition

*The same panelists serve on both Review Panel One and Two.*

#### Time Commitment

- Two (2) 4-hour panel meetings (one for glass opportunities, one for mosaic opportunity).

## BUILDING PROGRESS

# Bring Your Expertise to the Process

Such as knowledge of (listed in alpha order):

- Art and artists
- Architecture
- History, values and culture of the community
- History, values and culture of the SFMTA
- Other knowledge specific to the project



Artist Review Panel for Southeast Community Center Plaza Sculpture Project (2019)

## BUILDING PROGRESS

# Working Group Participation

- Questions/Discussion
- Considerations
  - Arts Program goals: Celebrate the people, values, history and diverse culture of the Potrero Hill and Mission neighborhoods, as well as to highlight SFMTA's mission to promote environmental stewardship and provide reliable, safe, and affordable transportation for all.
  - Knowledge/experience that you bring
  - Understanding of community audiences
  - Diversity of perspectives
  - Need for collaboration and respect
- Nominations
  - Do any members have an interest in participating?
- Selection process
  - Additional self-nominations will be accepted through **October 6th**
  - If more than four (4) members are interested, Working Group members will be asked to take part in an online vote to select up to four (4) Community Representatives for the two (2) Artist Panels processes



Central Subway, Union Square-Market Street Station  
Hughen/Starkweather, *Convergence: Commute Patterns*, 2022  
Glass





# Next Steps

Chris Jauregui, Potrero Neighborhood Collective (PNC)



## BUILDING PROGRESS

# Next Steps

PNC and the SFMTA have the following community outreach activities planned (subject to change):

- Next Working Group meeting: November 7, 2023
- SF County Transportation Authority Community Advisory Committee rescheduled to October 25, 2023
- Listening Sessions with various community stakeholders including (schedules pending, dates TBD)
- Finalizing LBE plan for Bus Yard Infrastructure – draft to be made available to the LBE community via SFMTA Contract Compliance Office (CCO) this Fall 2023



## BUILDING PROGRESS

# Public Comment

- Do any members of the public wish to comment?
- If you are joining via a computer, please use the raise your hand feature and we will unmute you.
- Joining by phone? We will unmute folks one at a time and call out the last four digits of your phone number.
- Please state your name and organizational affiliation.



# BUILDING PROGRESS

## Contact Us

### **John Angelico**

Public Information Officer

[John.Angelico@SFMTA.com](mailto:John.Angelico@SFMTA.com)

415.646.4783

### **Bonnie Jean von Krogh**

Building Progress Public Affairs Manager

[BonnieJean.vonKrogh@SFMTA.com](mailto:BonnieJean.vonKrogh@SFMTA.com)

415.646.2447

### **Kerstin Magary**

Senior Manager of the SFMTA FIT Facilities and Strategic Real Estate

[Kerstin.Magary@SFMTA.com](mailto:Kerstin.Magary@SFMTA.com)

### **Potrero Neighborhood Collective**

[PotreroYard@plenaryamericas.com](mailto:PotreroYard@plenaryamericas.com)

*(new email address)*

Sign Up for Project Updates

[SFMTA.com/PotreroYard](https://SFMTA.com/PotreroYard)

