



SFMTA

L Taraval Improvement Project Segment B

Virtual Open House
January 15, 2022

Agenda

- Introduction of Project Team
- Presentation
- Question and Answer

Project Background

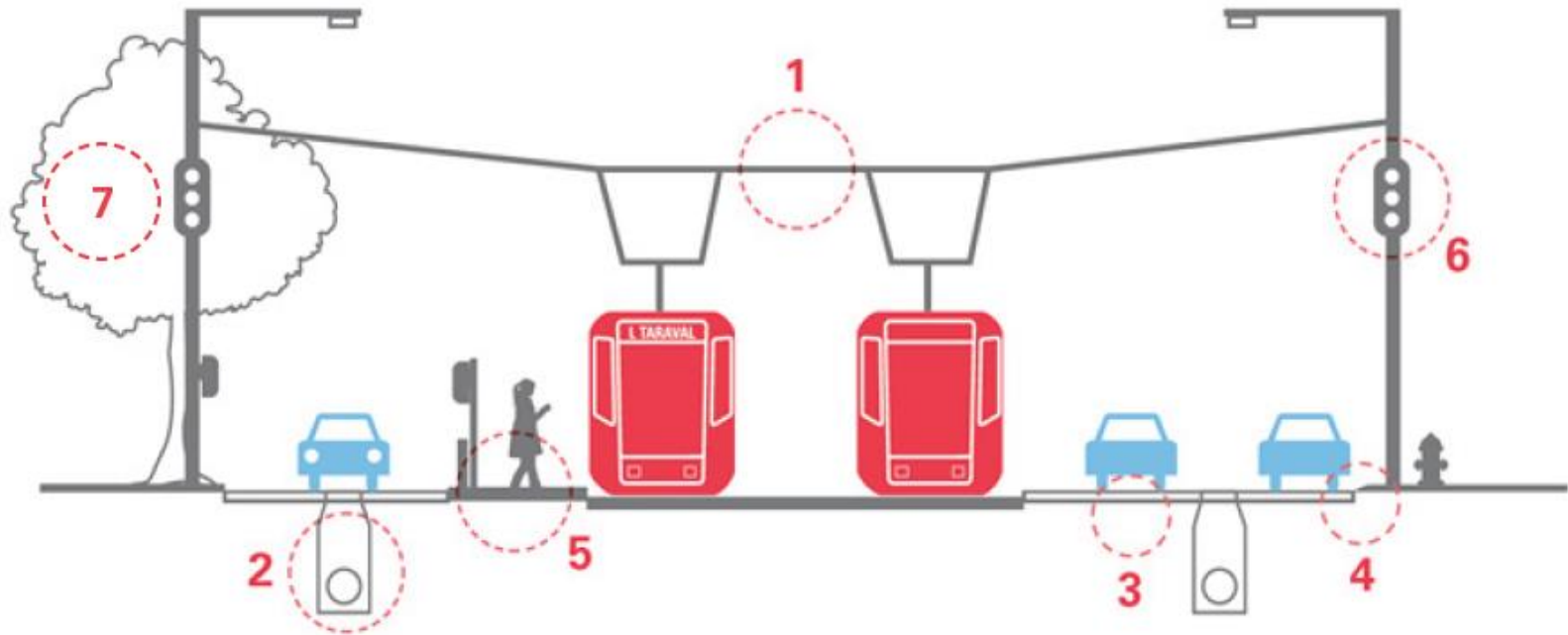
Taraval Street

- Major transit corridor
 - L Taraval carried 33,000+ customers on an average weekday (pre-pandemic)
- Vision Zero High Injury Corridor for pedestrians
 - 46 pedestrian injury collisions in 5 years before project approval
 - 22 were passengers boarding/alighting train at stops without a boarding island

MAKE SAFETY OUR
FIRST STOP ON THE L
TARAVAL



Infrastructure Improvements



1. Rail track and overhead line replacement
2. Water and sewer line replacement
3. Surface repaving
4. Curb ramp upgrades
5. Concrete boarding islands and pedestrian bulbs
6. Traffic signals
7. New trees and landscaping

Project Goals

1. Improve **safety** on Taraval
 - Eliminate injuries in support of Vision Zero
2. Improve **transit reliability** and **comfort**
 - Reduce long waits on the train
3. Improve the **state of good repair** of our transit, sewer and water systems including street restoration
 - Decrease maintenance

Project Benefits

- Sewer and water line replacement and rehabilitation will allow for greater longevity of utility pipes
- Sidewalk bulbouts for safer pedestrian crossing and higher visibility
- Enhanced sidewalks to draw visibility to pedestrian crossing at intersections
- New trees and landscaping

Project Benefits (Cont.)

- Rehabilitation of worn rails, overhead wires and repavement of Taraval Street
- New safety boarding islands for safer boarding/off boarding of Muni customers
- Transit priority traffic signals to improve Muni reliability
- Upgrades to track resulting in a smoother ride for L Taraval customers and less noise for residents and merchants



Community Engagement

Extensive community outreach prior to SFMTA Board initial approval in September 2016



MUNI FORWARD

TARAVAL街即將發生的變化

WHAT'S COMING TO TARAVAL STREET

我們正致力讓TARAVAL街更安全，MUNI的L線更可靠。

WE'RE MAKING TARAVAL STREET SAFER AND MUNI'S L MORE RELIABLE.

從2017年1月起，您在這條交通通道將看到許多變化，例如街道上的新漆以及改良的交通標誌，提醒駕駛人在Muni乘客上下車時停車等候。

這是Taraval升級改良項目的第一階段，該項目預計為期數年。如要了解更多訊息，請到muniforward.com/L/CHI網頁瀏覽詳情！

Starting in January 2017, you'll see a variety of changes on the corridor – from new paint on the street to enhanced signage reminding drivers for loading Muni passengers.

This is the first phase of a multi-year project to upgrade Taraval Street. Learn more at muniforward.com/L/



L TARAVAL RAPID PROJECT MUNIFORWARD

Want More Parking on Your Block?

想要更多停車在你的塊？

CURRENT

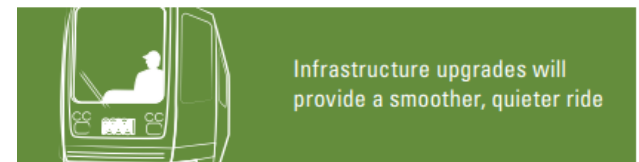
PROPOSED

To add as many as 140 new parking spaces to the Taraval Street area (separate from certain...)

為了在Taraval地區增加多達140個的新停車位，請到muniforward.com/L/CHI網頁瀏覽詳情！



20% TRAVEL TIME SAVINGS means more reliable Muni rides with fewer gaps in service



Infrastructure upgrades will provide a smoother, quieter ride

Community Engagement

Focus group meetings held in 2016 and 2017 to collect feedback on the quick build phase of improvements



Community Engagement

Following additional stakeholder feedback, further changes made to project design in 2017 and 2018

- Preserved eastbound stop next to Safeway at 17th Ave.

L-TARAVAL RAPID PROJECT **MUNIFORWARD**

A SAFER, MORE RELIABLE L TARAVAL

After a robust community process, the SFMTA Board of Directors will vote on a few proposals to make the L Taraval safer and more reliable. Proposed stop removals and time-limited parking on certain blocks of Taraval Street would complement the many project features already approved.

SFMTA Board Meeting December 5, 1:00 p.m. City Hall Room 400

L Taraval Stop Removals:

- **17th Avenue (inbound):** Additional analysis requested by the SFMTA Board after its approval of this L Taraval stop's removal has been completed. Extensive research supports the recommendation to remove the stop, keeping 11 parking spaces.
- **38th Avenue (inbound):** Removal of this stop is recommended due to its proximity to the Sunset Boulevard stop and the fact that it is not possible to build a full boarding platform necessary for safety here.
- **44th Avenue (both directions):** Based on the official SFMTA stop spacing guidelines, this stop is recommended for removal in order to improve transit reliability. If these stops are removed, 12 parking spaces will be restored on the corridor.

Additional Project Features:

- **Boarding island** (Image)
- **Track improvements** (Image)
- **Pedestrian bulb** (Image)

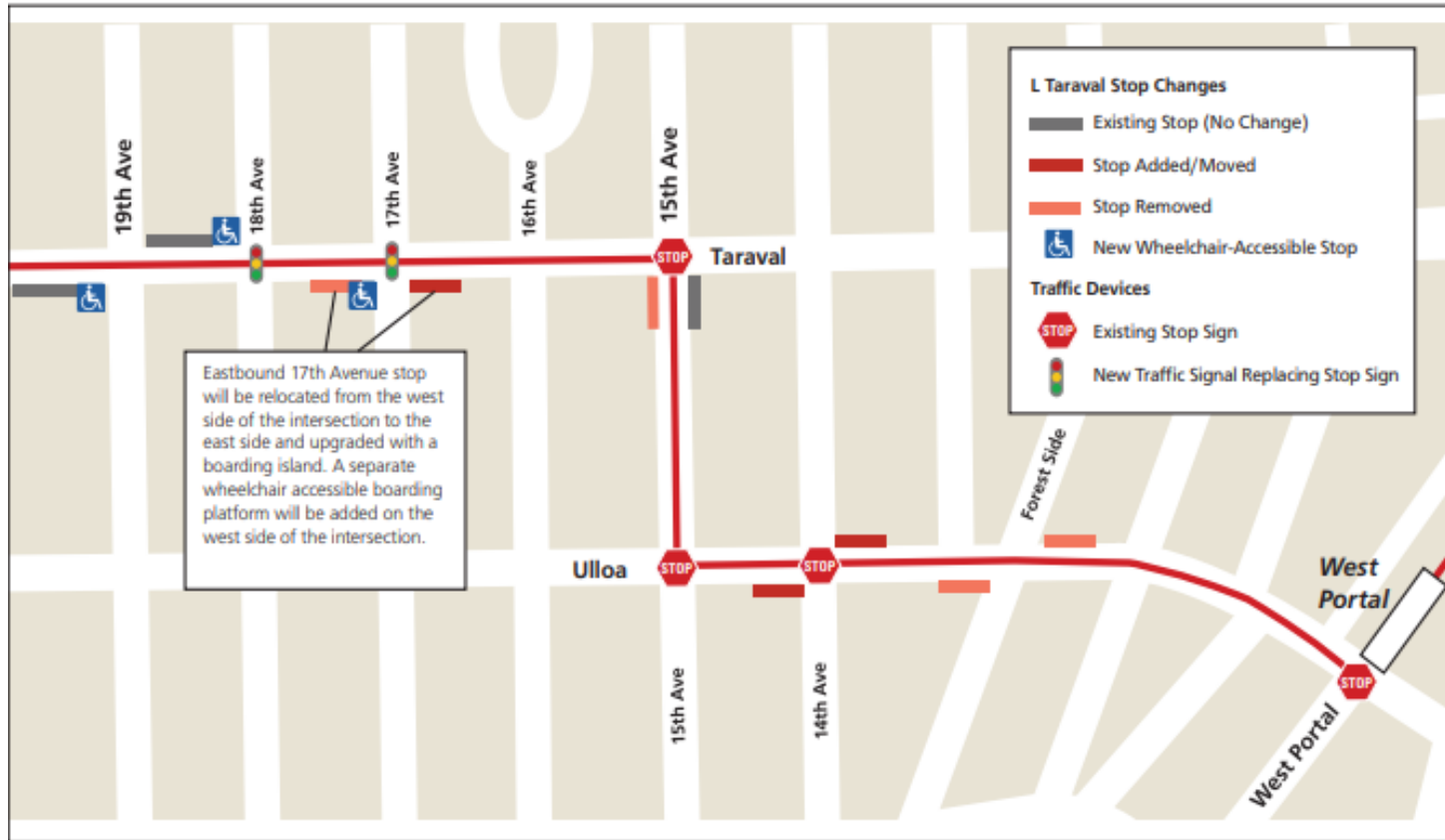
Learn more, read the proposal, and see detailed maps at sfmta.com/LRapid

sfmta.com/LRapid

SFMTA
San Francisco
Muni
Metropolitan
Authority

سان فرانسيسكو
مترو
السلطة
المدينة
المتحدة

Permanent stop changes





Community Engagement

Engaged with community in 2018 and 2019 on detailed design elements for boarding islands, including landscaping and art selections

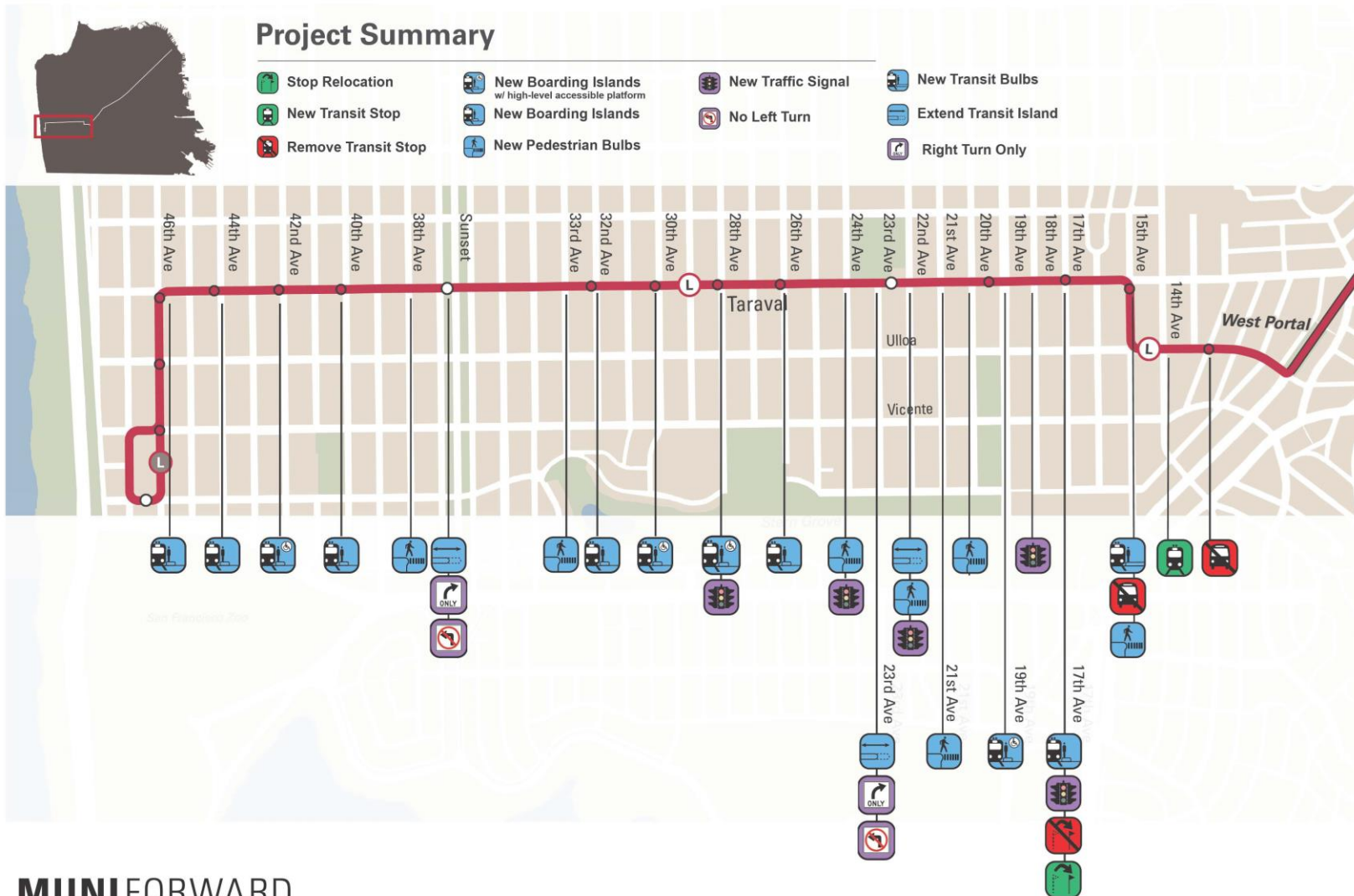


View from boarding island planter

neighborhood people stop street
city safety work art
parking or love
taraval
put good sunset trees area
money beautiful plants color
businesses areas amp



L Taraval Improvement Project



MUNI FORWARD

Boarding Island Improvements

New transit boarding islands with attached high-level accessible platforms

- 19th Ave. (both directions)
- 30th Ave. (eastbound)

New transit boarding islands/bulbs without attached high-level accessible platforms

- 15th/Taraval bulb (westbound)
- 26th Ave. islands (both directions)
- 30th Ave. island (westbound)
- 32nd Ave. islands (both directions)

Boarding Island Improvements (Cont.)

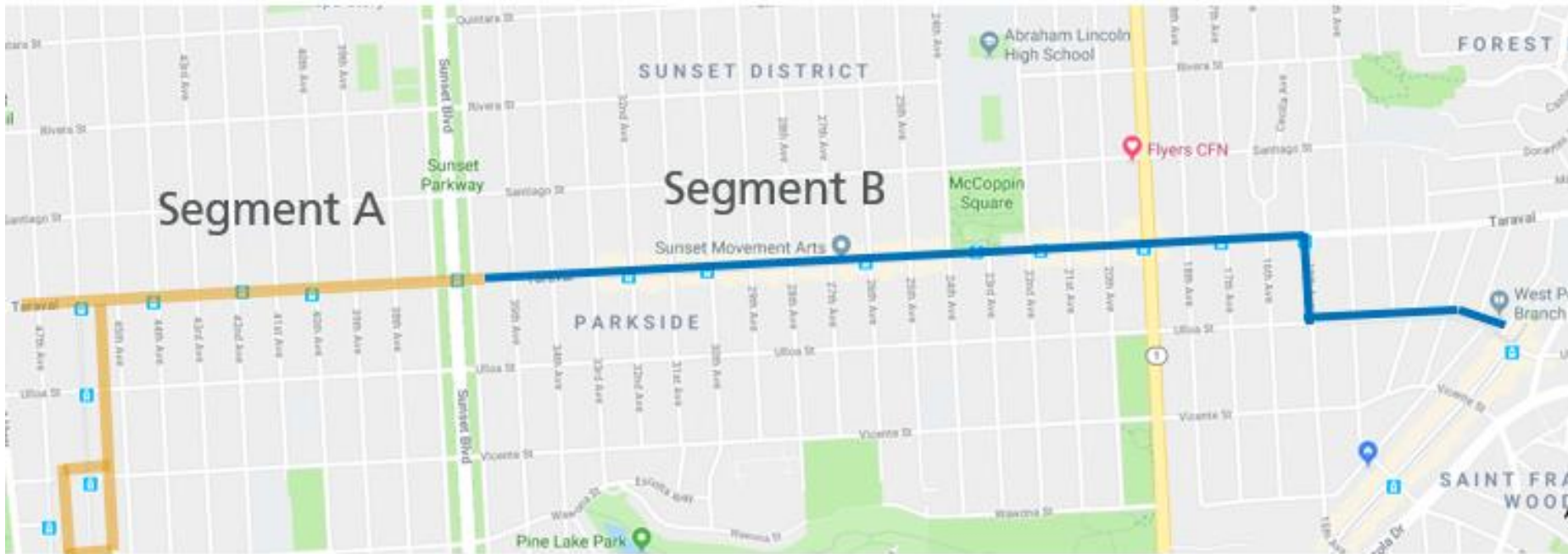
New high-level accessible platforms (standalone)

- 17th Ave. (eastbound)
- 28th Ave. (westbound)
- Existing transit boarding islands that will be extended
 - 22nd Ave. (eastbound)
 - 23rd Ave. (westbound)
 - Sunset Blvd. (westbound)



L Taraval Improvement Project

Construction Segments



Segment A

SF Zoo to Sunset Blvd

Construction 2019 through July 2021

Completed on time and on schedule

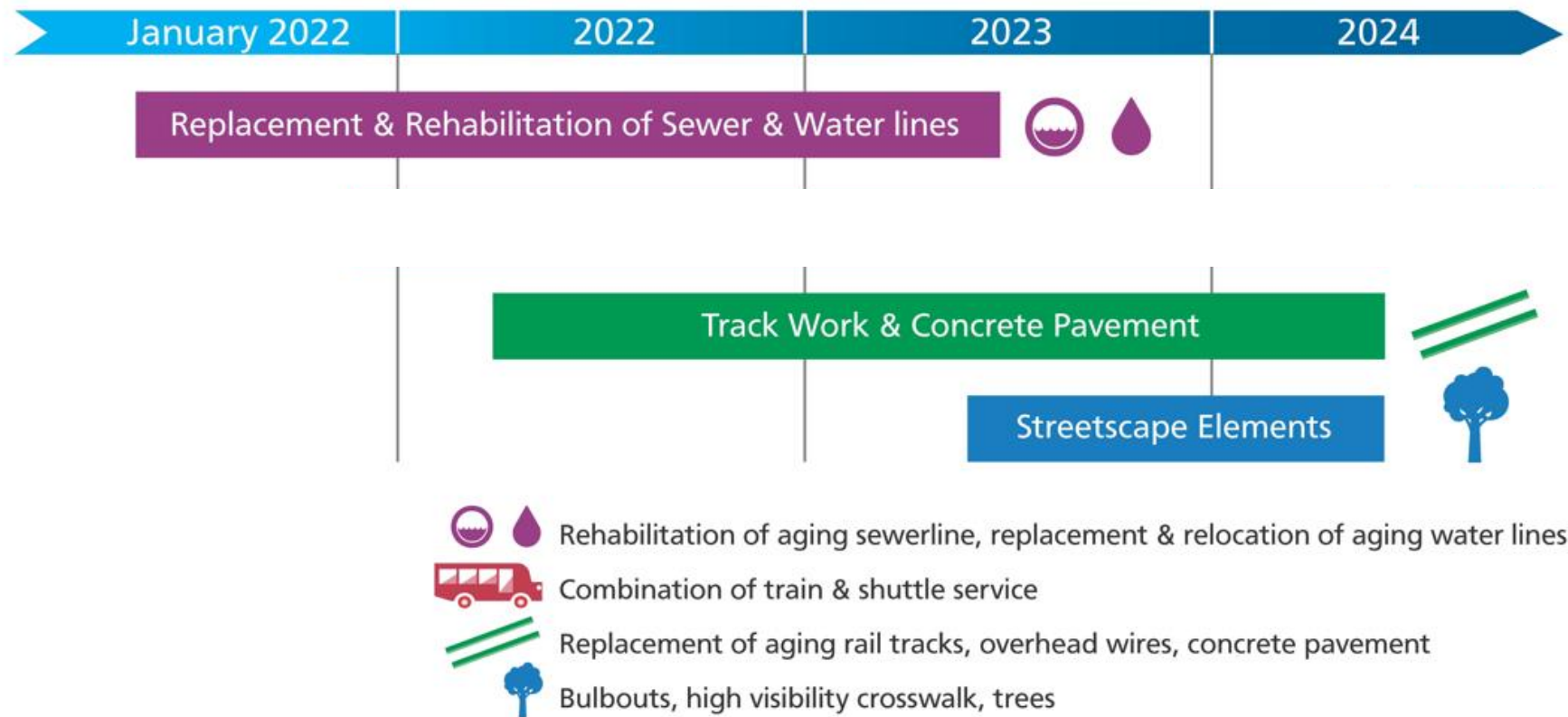
Segment B

Sunset Blvd to West Portal

Construction to begin in January 2022

and continue through Fall 2024

Segment B Sample Timeline



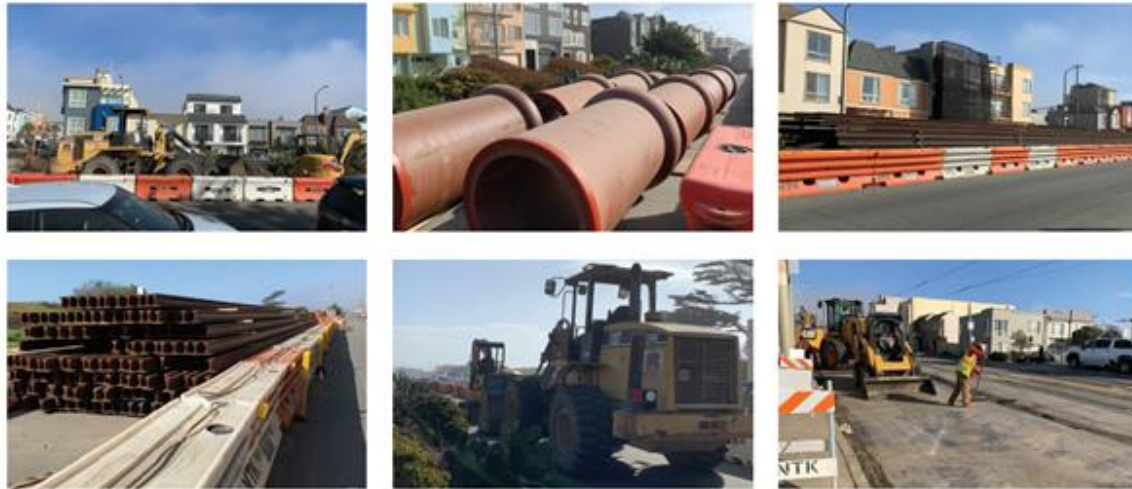
**Subject to change*

Construction Approach Segment B

- Construction along the corridor from curb to curb
- Two crews to work at different locations to gain headway
- We will finish sewer and water work and underground work before moving to middle track construction
- Boarding islands will be constructed following completion of track work
- Civil roadway work outside of the trackway will be toward the end of project completion
- Construction team will prioritize mitigating impacts at commercial blocks

**Subject to change*

Equipment Staging Considerations



- Safe
- Long length
- Close proximity to worksite
- Adjacent to a park
- No sharp corner turns
- Flat or low grade
- Not blocking properties and businesses

Staging Locations

MUNI FORWARD

L Taraval Improvement Project

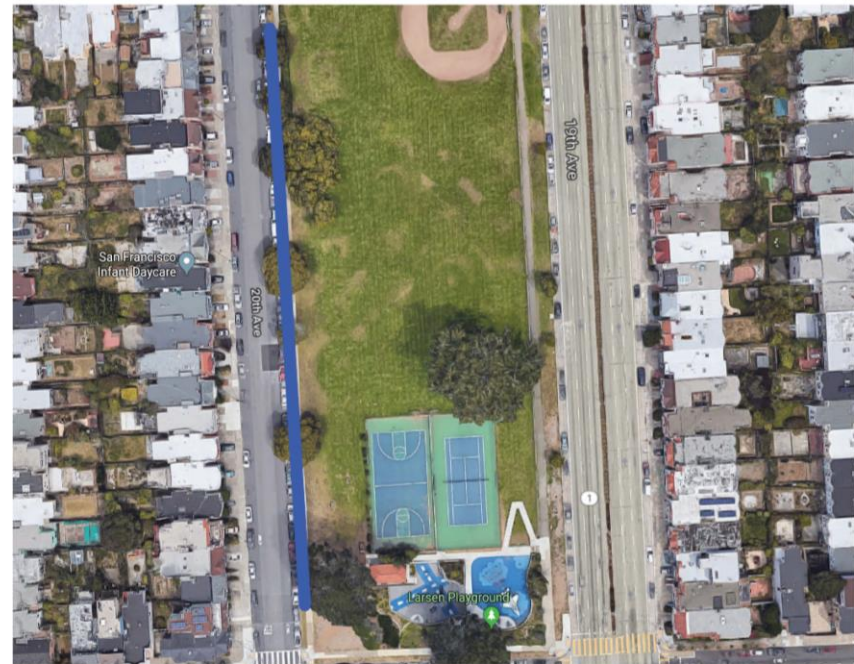


Additional temporary local staging areas to be determined as project progresses

Staging Locations (Cont.)

20th Avenue Between Ulloa and Vicente Street

- East side only as it is adjacent to park
- Grade is ok for staging needs
- Length: 600 ft
- Parking impact: 27 parking spaces

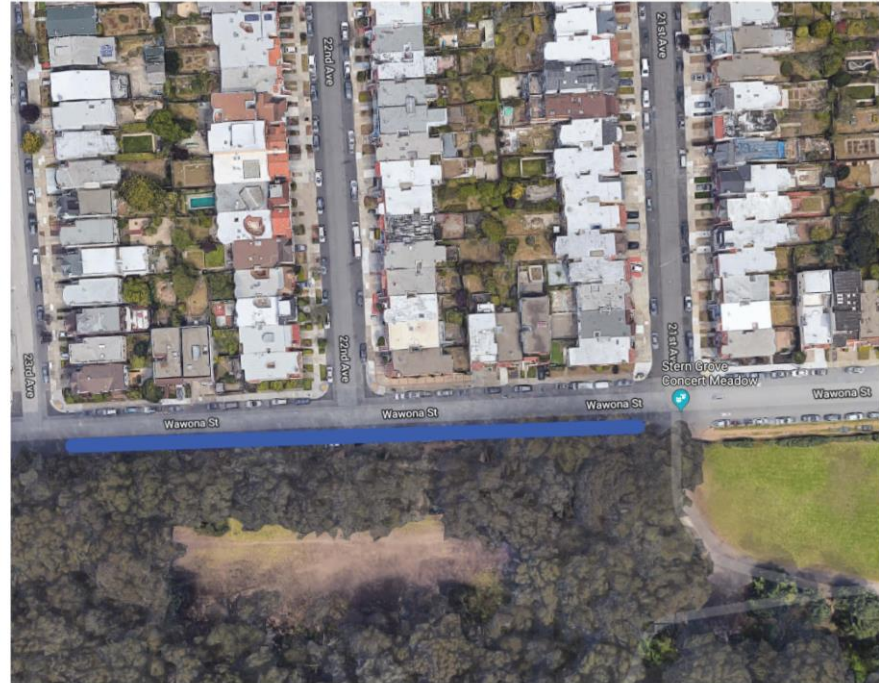


[SFMTA.com/LTaravalProject](https://www.sfmta.com/LTaravalProject)

Staging Locations (Cont.)

Wawona Street Between 21st and 23rd Avenue

- South side only as it is adjacent to park
- Grade is ok for staging needs
- Location length cannot be extended to 28th Avenue as Wawona Street dead ends at 26th Avenue
- Wawona Street between 23rd to 26th Avenue also narrows from 49ft to 28ft in width
- Length: 550 ft
- Parking impact: 25 parking spaces



San Francisco
Water
Power
Sewer

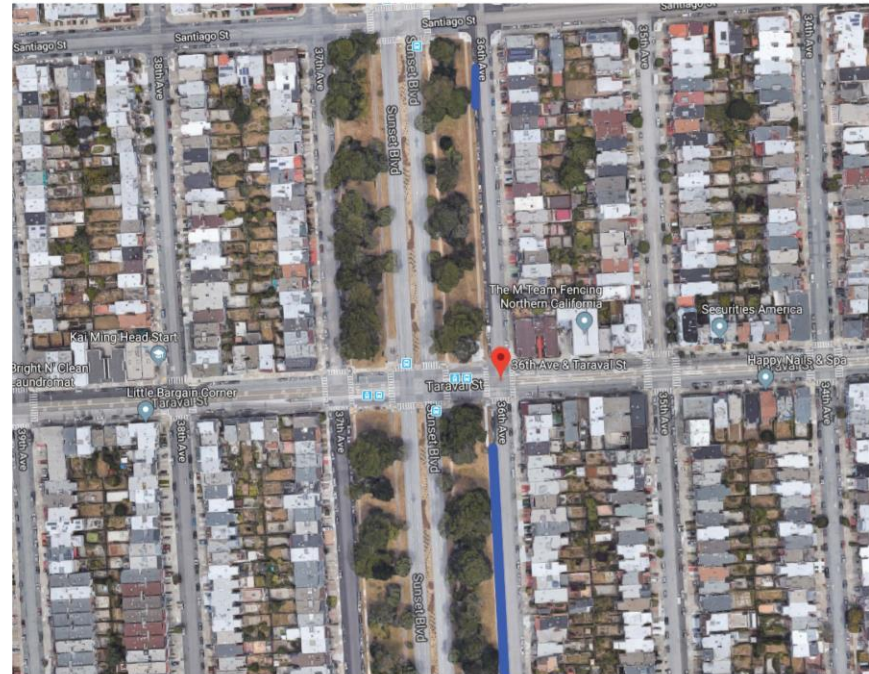


[SFMTA.com/LTaravalProject](https://www.sfmta.com/LTaravalProject)

Staging Locations (Cont.)

36th Avenue Between Taraval and Ulloa Street

- West side only as it is adjacent to park
- Grade is ok for staging needs
- Length: 600 ft
- Parking impact: 27 parking spaces

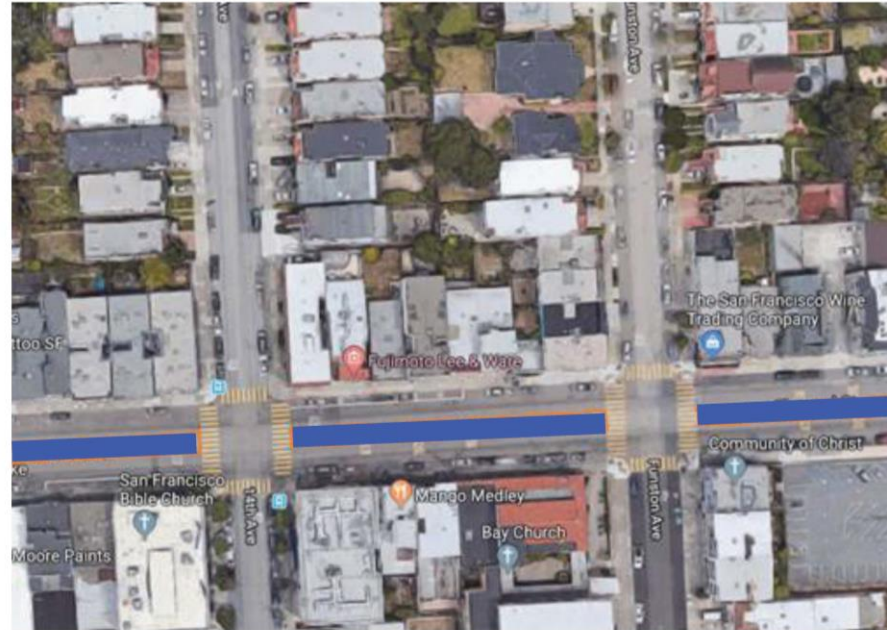


[SFMTA.com/LTaravalProject](https://www.sfmta.com/LTaravalProject)

Staging Locations (Cont.)

Taraval between 12th to 15th Avenue

- In the middle of the blocks as it is wide enough for both equipment and vehicular traffic
- Grade is ok for staging needs
- Length: 600ft
- No impact to parking



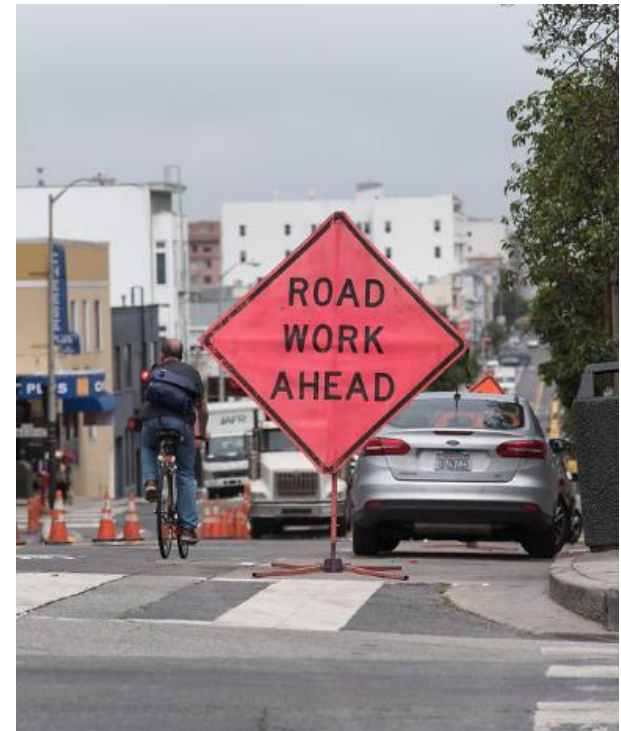
San Francisco
Water
Power
Sewer



[SFMTA.com/LTaravalProject](https://www.sfmta.com/LTaravalProject)

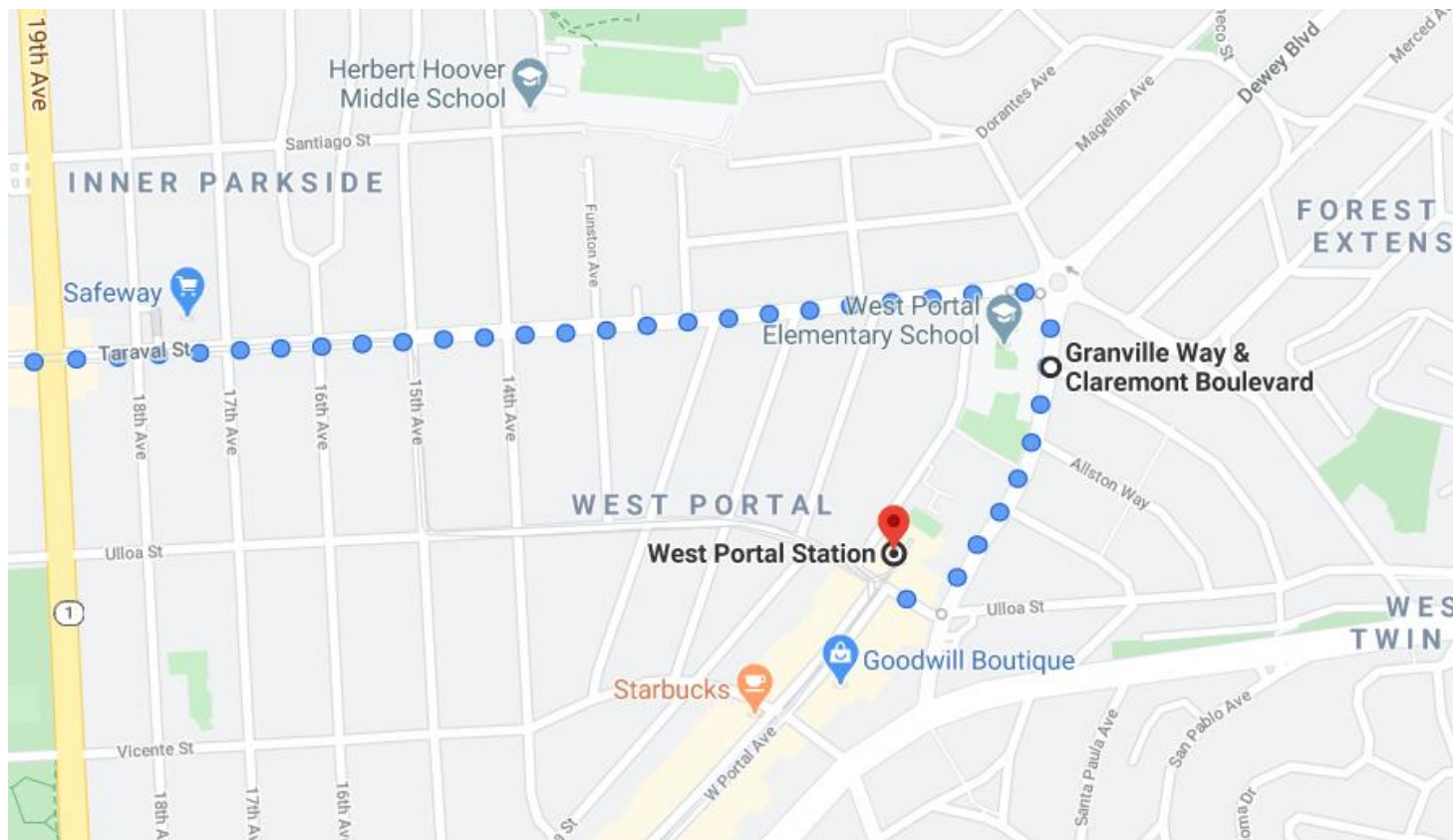
Traffic and Parking Plan

- Flexible and responsive approach to maximize options for all road users
- Retaining as much parking as possible, especially in commercial areas
- Efforts to accommodate loading zones needs for local businesses
- During traffic detours or street closures will issue public notifications for vehicle traffic and provide alternate route info.
- Allow local access when streets and intersections are closed
- Occasional closure of one side a block during pavement work with advanced notice

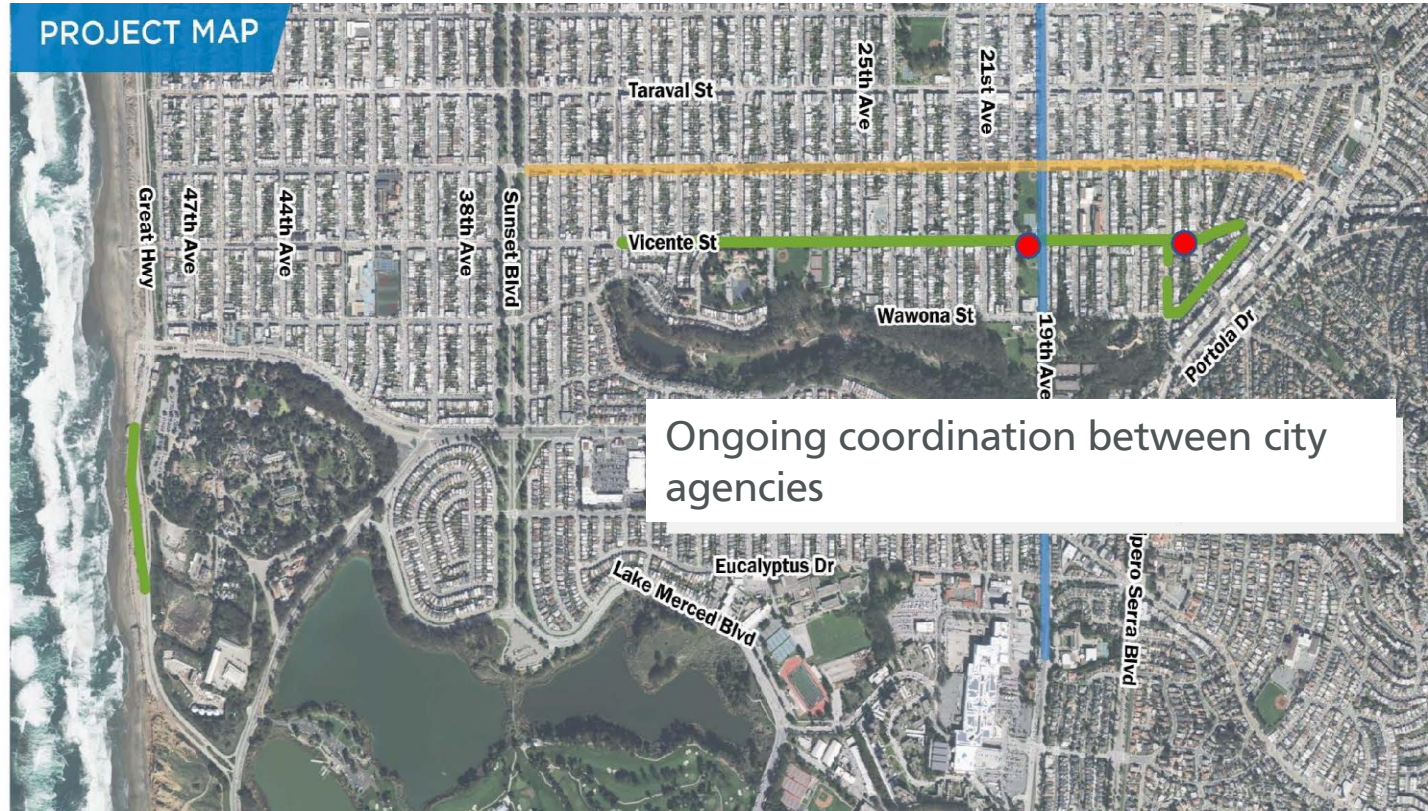


Transit Plan

L Shuttle Bus will continue serving the entire distance of the L Taraval line (SF Zoo > Embarcadero) until further notice.



Project Coordination

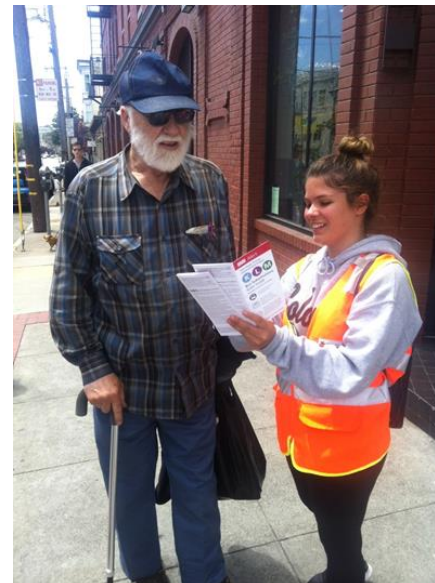


- SFPUC Project Tunnel Portal & Worksite
- Vicente/Wawona Project (SFPUC)
- 19th Avenue Improvements (SFPW)
- L-Taraval Improvements (SFMTA)

Construction Mitigation

Major Elements

- Business Support Services
- Coordination with OEWD
- Open for Business Campaign
- Parking and Traffic Mitigation
- Onsite field office
- Wayfinding signage
- Regular cleaning schedule
- Best practice in housekeeping maintaining clean noise, dust and safe streets
- Ongoing communication
- Ambassador deployment
- Bus Substitution Guides



Business Support:

Segment A Marketing Campaign

Supported By: 支持者:

BEACHSIDE
TARAVAL
Beachside Taraval海

Recover Together, Shop Locally!
一起恢復，本地購物！

#BeachsideTaraval

Where else you can catch a wave in the morning, have a close encounter with your favorite animal in the afternoon, and enjoy delicious restaurants by night – all within walking distance?
還有什麼地方可以在早上衝浪，在下午與您最喜歡的動物相遇，並在晚上享受美味的當地餐廳-全都在步行距離之內？

- Unique branding name “Beachside Taraval” to promote the Taraval businesses west of Sunset Boulevard
- Formation of a Taraval Segment A Working Group to guide SFMTA, OEWD, and consultant, Civic Edge on the direction of the marketing campaign.
 - Supervisor Mar’s Legislative Aides also invited to attend each working group meeting.
- End results:
 - Open for Business/business directory signage
 - A Frames
 - 750 hand sanitizer bottles, plus 50 big bottles
 - Beachside Taraval branded masks
 - Shop Taraval posters
 - Beachside Taraval stickers
 - Shop Taraval/L Taraval tote bags

Segment B Outreach Overview

Pre-Construction

- Announce start of construction and key details
 - Mailer sent to 14,000 addresses in project area
- Project briefs to BOS Districts, MONS, CAC and MAAC
- Social media and email project updates
- @SFMTA Project Page Updates and Blog posting
- Ads in local papers announcing start of construction
- Open houses
- Construction Mitigation Marketing Program in development for merchants
- Project briefings to neighborhood and merchant groups

Segment B Outreach Overview (cont.)

Construction

- Distribute printed materials -flyers, cards, to businesses, residents, neighbors and community stakeholders
- Leaflet the neighborhoods
- Regular email updates about progress and key milestones
- Social media platforms posts
- Wayfinding signage to direct customers
- Blog posts on [SFMTA.com/Blog](https://www.sfmta.com/blog)
- Leverage newsletters sent out by BOS, merchant, neighborhood and advocacy groups

Project Office

Project Office

1444 Taraval Street and 25th Ave.

Construction trailer

West side of 36th Ave. between Taraval Street and Ulloa St.

Contact Information

Website: **SFMTA.com/LTaravalProject**

Sign up for email and text alerts

Email: **LTaravalProject@SFMTA.com**



Q&A

Before you speak:

- Ensure you are in a quiet location
- Speak clearly
- **Turn off** any TVs or radios around you

From a computer:

- Use the **raise hand** feature to let the moderator know that you'd like to speak
- The moderator will allow you to unmute
- **Unmute** yourself by clicking on the **microphone icon**
- After your comment, the moderator will lower your hand and mute

By phone:

- **Dial *9** to inform the moderator that you'd like to speak
- The moderator will allow you to unmute
- **Unmute** yourself by **dialing *6**
- After your comment, the moderator will lower your hand and mute