



SFMTA

# January 8, 2021 Engineering Public Hearing

[SFMTA.com/ENGHearing](https://www.sfmta.com/ENGHearing)

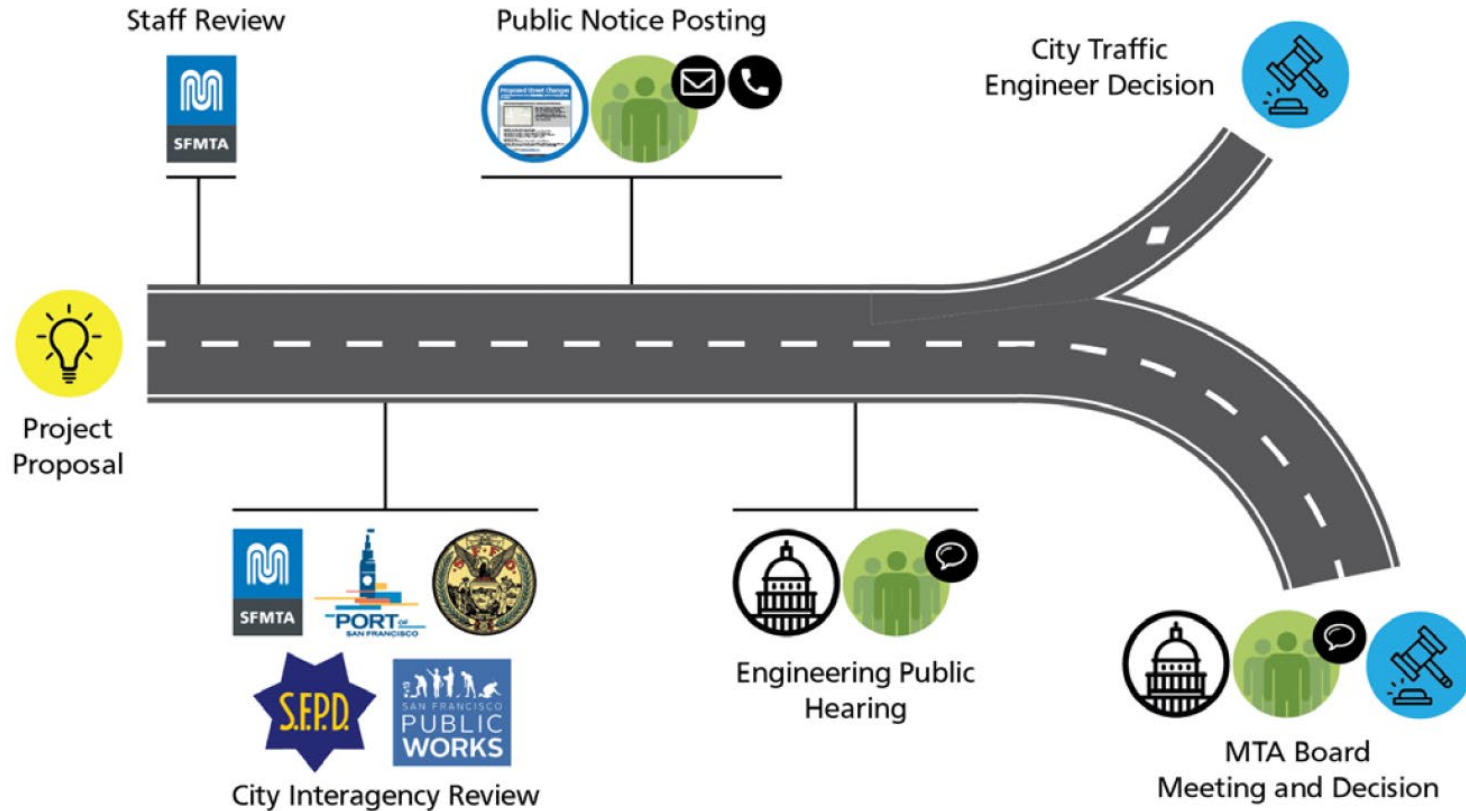
Conference Line: 888-251-2909

Participation Code: 4584731

[SFMTA.com/ENGSpeakerCard](https://www.sfmta.com/ENGSpeakerCard)

# Proposed Street Changes

How does a proposed street change get approved?



<https://www.sfmta.com/committees/engineering-public-hearings>


# Public Hearing Decision Posting

Results will be posted by  
5 PM next Friday

<https://www.sfmta.com/calendar/engineering-public-hearing-meeting-january-8-2021>

## Referenced Materials

Engineering Public Hearing Agenda, July 17, 2020

 [Engineering Public Hearing Agenda, July 17, 2020](#)

Engineering Public Hearing Results, July 17, 2020

 [Engineering Public Hearing Results, July 17, 2020](#)





SFMTA

# January 8, 2021 Engineering Public Hearing

[SFMTA.com/ENGHearing](https://www.sfmta.com/ENGHearing)

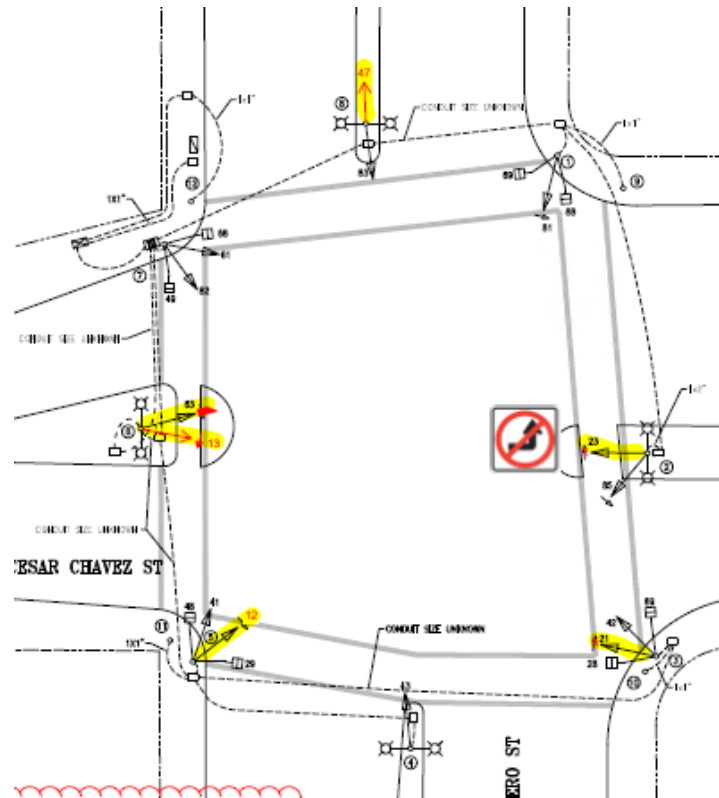
Conference Line: 888-251-2909

Participation Code: 4584731

[SFMTA.com/ENGSpeakerCard](https://www.sfmta.com/ENGSpeakerCard)

# 1. ESTABLISH – NO LEFT TURN

Cesar Chavez Street, eastbound, at Guerrero Street ♦  
(Supervisor Districts 8 and 9) Eric Luu, [eric.luu@sfmta.com](mailto:eric.luu@sfmta.com)



Conference Line: 1- 888-251-2909 (use participation code: 4584731)

To comment on an item, press "1" and then "0" when prompted.

## 2. ESTABLISH – STOP SIGN

Jack London Alley, northbound, at Bryant Street, stopping the stem of this T-intersection ♦ (Supervisor District 6) Amy Chun, Amy.chun@sfmta.com



Conference Line: 1- 888-251-2909 (use participation code: 4584731)

To comment on an item, press "1" and then "0" when prompted.

### 3. ESTABLISH – STOP SIGNS

Lawton Street, westbound and eastbound, at 21st Avenue, making this intersection an all-way STOP ♦ (Supervisor District 4) Jeffrey Tom, [jeffrey.tom@sfmta.com](mailto:jeffrey.tom@sfmta.com)



Conference Line: 1- 888-251-2909 (use participation code: 4584731)

To comment on an item, press "1" and then "0" when prompted.



#### 4. ESTABLISH – NO PARKING ANYTIME

Short Street, north side, from 10 Short Street west property line to 15 feet easterly (restricts parking across driveway of 10 Short Street) ♦ (Supervisor District 8) Alvin Lam, [alvin.lam@sfmta.com](mailto:alvin.lam@sfmta.com)



Conference Line: 1- 888-251-2909 (use participation code: 4584731)

To comment on an item, press "1" and then "0" when prompted.



## 5. ESTABLISH – STOP SIGNS

Clement Street, eastbound and westbound, at 9<sup>th</sup> Avenue, making this intersection an all-way STOP ♦ (Supervisor District 1) [Alvin Lam, Alvin.Lam@sfmta.com](mailto:Alvin.Lam@sfmta.com)



Conference Line: 1- 888-251-2909 (use participation code: 4584731)

To comment on an item, press "1" and then "0" when prompted.

**6(a). RESCIND – ANGLED PARKING**

**Irving Street, north side from 20 feet to 45 feet west of 40th Avenue**

**6(b). ESTABLISH – PARK PARALLEL**

**Irving Street, north side, from 9 feet to 45 feet west of 40th Avenue**

**(Supervisor District 4) Jeffrey Tom, [jeffrey.tom@sfmta.com](mailto:jeffrey.tom@sfmta.com)**



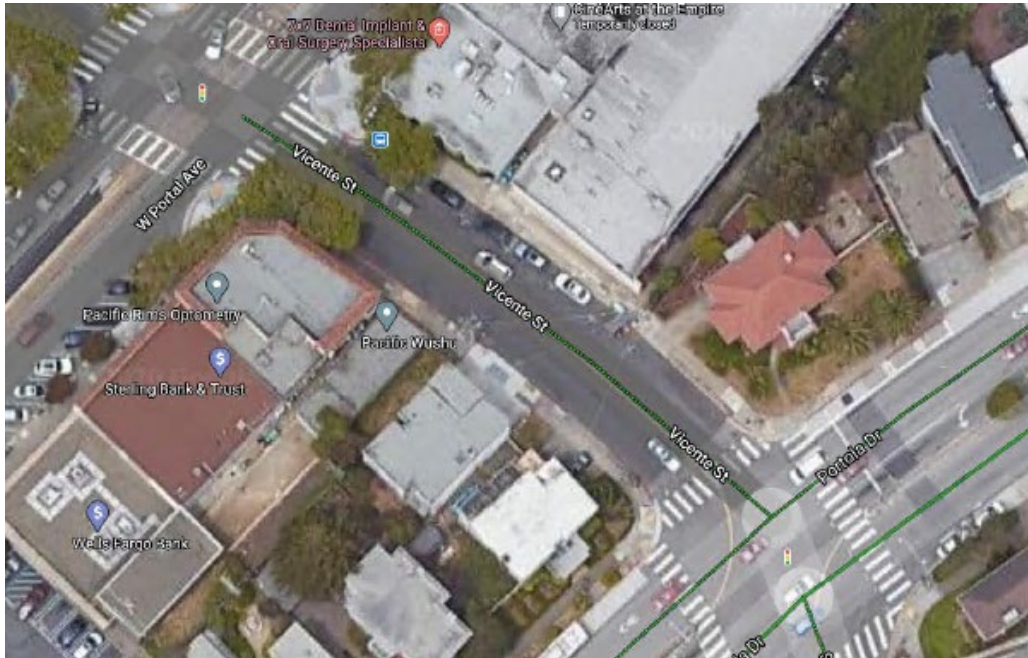
Conference Line: 1- 888-251-2909 (use participation code: 4584731)

To comment on an item, press "1" and then "0" when prompted.

7(a). ESTABLISH - CLASS II BIKEWAY (BIKE LANE)  
Vicente Street, southbound, from West Portal to Portola

7(b). ESTABLISH - CLASS III BIKEWAY  
Vicente Street, northbound, from West Portal to Portola

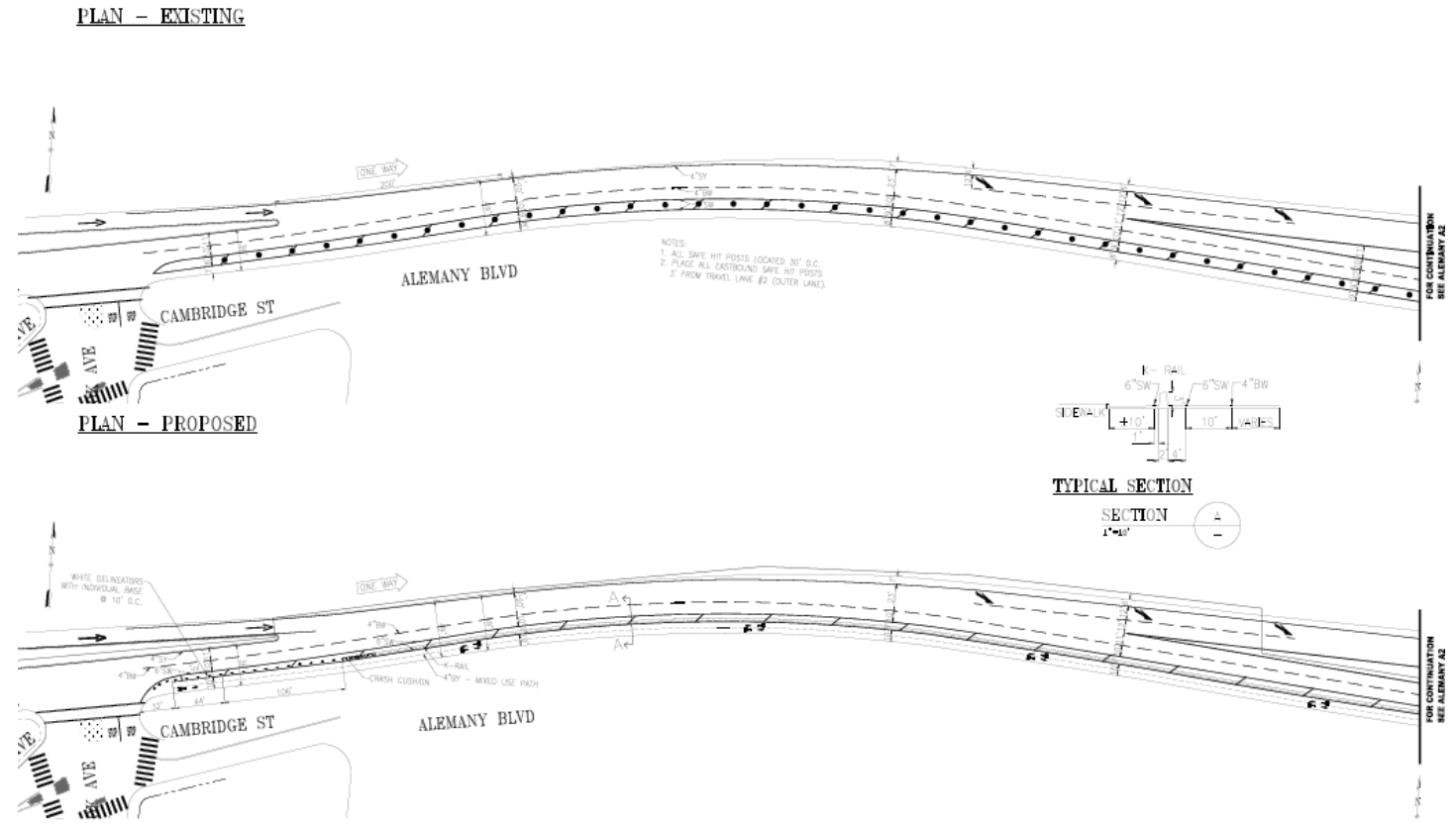
7(c). ESTABLISH - TOW AWAY NO PARKING ANY TIME  
Vicente Street, east side, from Portola 43 feet northerly (33 feet of additional no parking) (Supervisor District 7) Jonathan Chimento, [Jonathan.Chimento@sfmta.com](mailto:Jonathan.Chimento@sfmta.com)



Conference Line: 1- 888-251-2909 (use participation code: 4584731)

To comment on an item, press "1" and then "0" when prompted.

# 8. ESTABLISH - CLASS IV BIKEWAY (TWO-WAY PROTECTED) Alemany Boulevard from Stoneybrook Ave/Cambridge Ave to Crescent Ave/Putnam Ave (Supervisor District 11 & 9) Jonathan Chimento, [jonathan.chimento@sfmta.com](mailto:jonathan.chimento@sfmta.com)

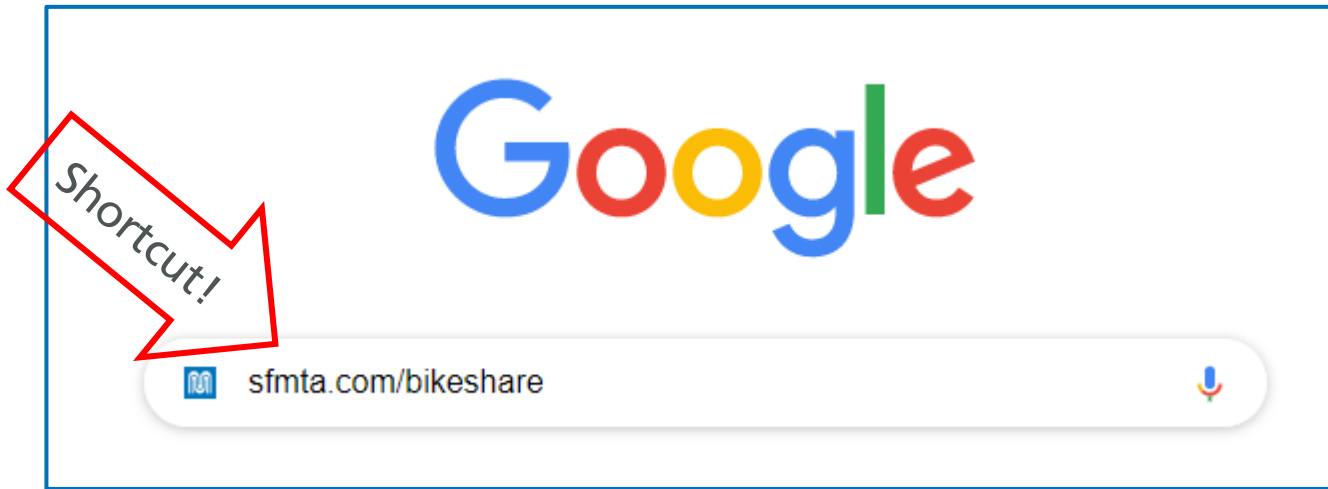


Conference Line: 1- 888-251-2909 (use participation code: 4584731)  
 To comment on an item, press "1" and then "0" when prompted.





<https://www.sfmta.com/getting-around/bike/bike-share>

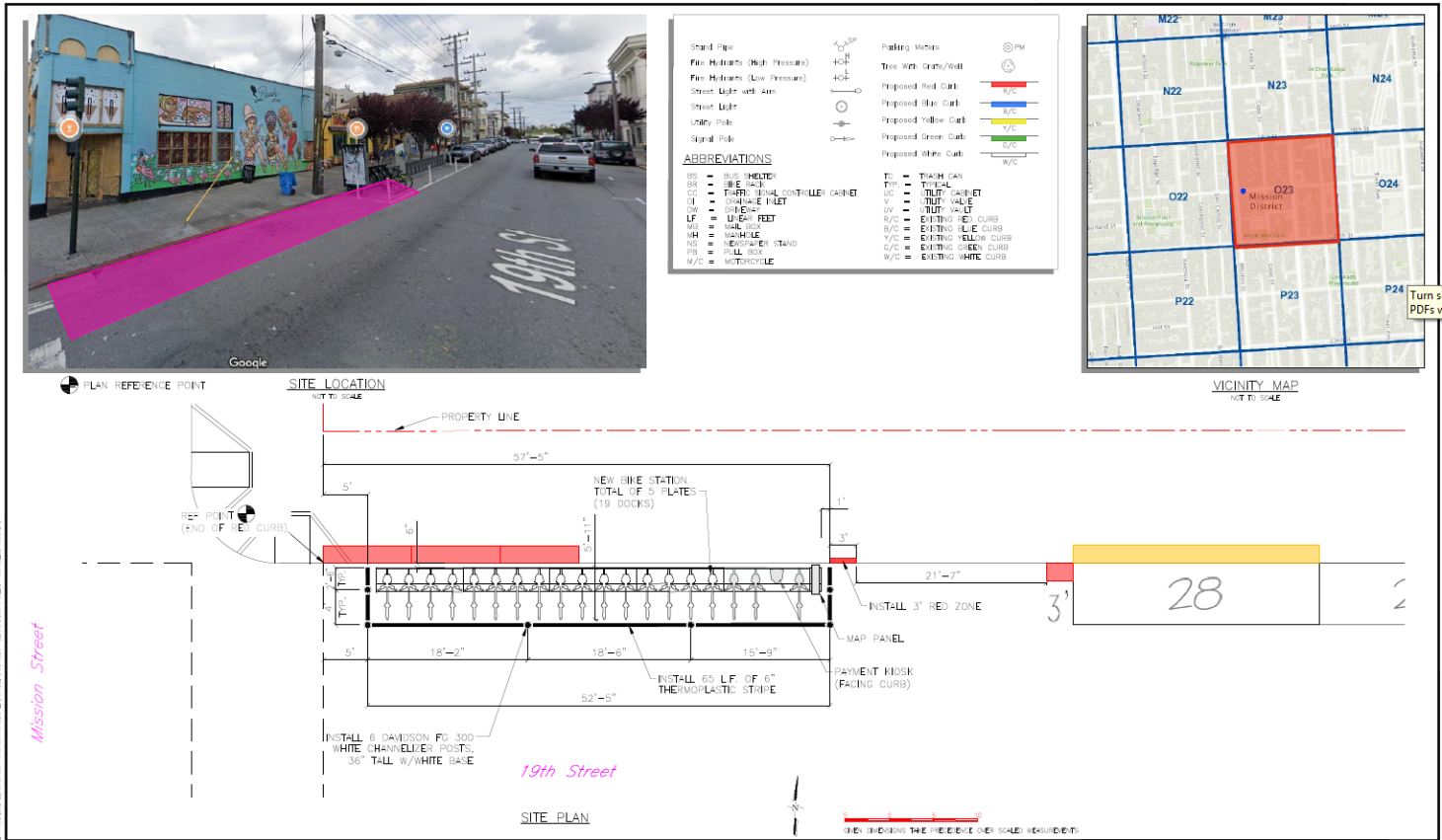


#### Quick Links

[Overview](#) | [Equity](#) | [Bikeshare's Purpose](#) | [System Planning and Station Siting](#) | [Bay Area Bike Share Pilot](#) | [Stationless Bikeshare](#) | [Bikeshare Data](#)

# 9. ESTABLISH – NO STOPPING EXCEPT BICYCLES ESTABLISH – BIKE SHARE STATION

19th Street, north side, from 5 feet to 57.5 feet east of Mission Street (53 foot station) ♦ (Supervisor District 6) Pallavi Panyam, [pallavi.panyam@sfmta.com](mailto:pallavi.panyam@sfmta.com)



Turn s  
PDFs v

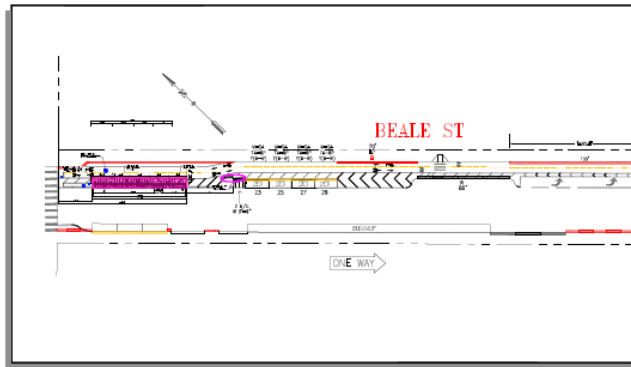
Conference Line: 1- 888-251-2909 (use participation code: 4584731)

To comment on an item, press "1" and then "0" when prompted.



**10(a). ESTABLISH – NO STOPPING EXCEPT BICYCLES  
ESTABLISH – BIKE SHARE STATION**

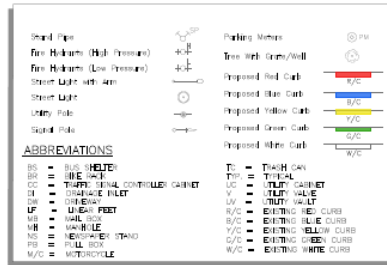
**Beale Street, east side, from 30 feet to 115 feet south of Market Street ♦  
(Supervisor District 6) Elizabeth Chen, elizabeth.chen@sfmta.com**



⊙ = PLAN REFERENCE POINT

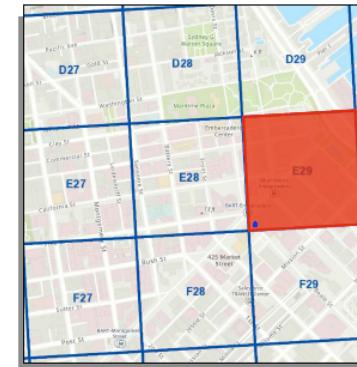
**SITE LOCATION**  
NOT TO SCALE

Source: GrandView Services, JULY 2020

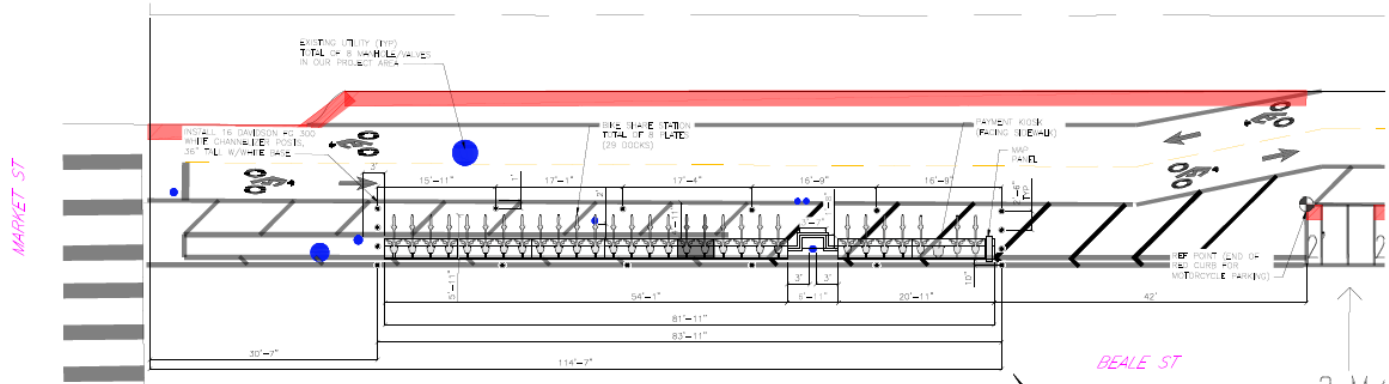


**SITE NOTES**

- ON-STREET STATION
- ADJACENT TO 300 CALIFORNIA ST
- METERED PARKING



**VICINITY MAP**  
NOT TO SCALE



**SITE PLAN**

ONE INCHES TAKE PRECEDENCE OVER SCALE DIMENSIONS

Aerial Overlay prepared by Google Earth, JULY 2020

**Conference Line: 1- 888-251-2909 (use participation code: 4584731)**

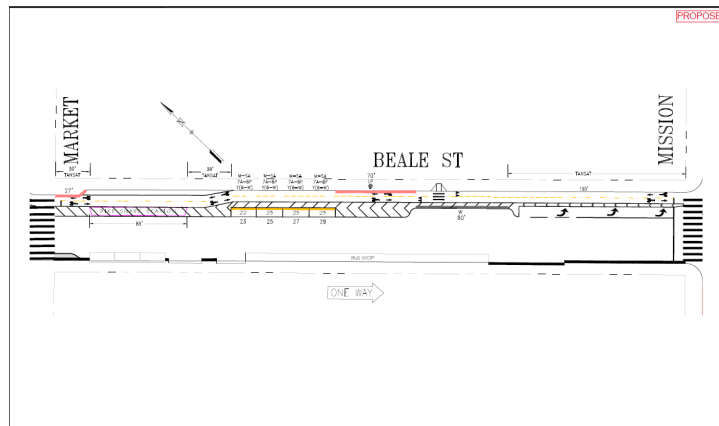
To comment on an item, press "1" and then "0" when prompted.

10(b). ESTABLISH – TOW-AWAY, NO STOPPING ANYTIME  
Beale Street, east side, from Market Street to 30 feet southerly  
Beale Street, east side, from 115 feet to 154 south of Market Street  
Beale Street, east side, from Mission Street to 155 feet northerly

10(c). ESTABLISH – METERED YELLOW ZONE, 6-WHEEL COMMERCIAL LOADING,  
1-HOUR TIME LIMIT, 7 AM TO 6 PM, MONDAY THROUGH SATURDAY  
Beale Street, east side, from 154 feet to 245 feet south of Market Street ♦

10(d). ESTABLISH – RED ZONE  
Beale Street, east side, from 245 feet to 315 feet south of Market Street (fire hydrant  
red zone)

10(e). ESTABLISH – WHITE PASSENGER LOADING ZONE, AT ALL TIMES  
Beale Street, east side, from 315 feet to 395 feet south of Market Street ♦  
(Supervisor District 6) Elizabeth Chen, [elizabeth.chen@sfmta.com](mailto:elizabeth.chen@sfmta.com)



Conference Line: 1- 888-251-2909 (use participation code: 4584731)

To comment on an item, press "1" and then "0" when prompted.


# Public Hearing Decision Posting

Results will be posted by  
5 PM next Friday

<https://www.sfmta.com/calendar/engineering-public-hearing-meeting-december-4-2020>

## Referenced Materials

Engineering Public Hearing Agenda, July 17, 2020

 [Engineering Public Hearing Agenda, July 17, 2020](#)

Engineering Public Hearing Results, July 17, 2020

 [Engineering Public Hearing Results, July 17, 2020](#)

