



SFMTA

October 16, 2020

Engineering Public Hearing

<https://meet.sfmta.com/meetings/ZN6KJBHY>

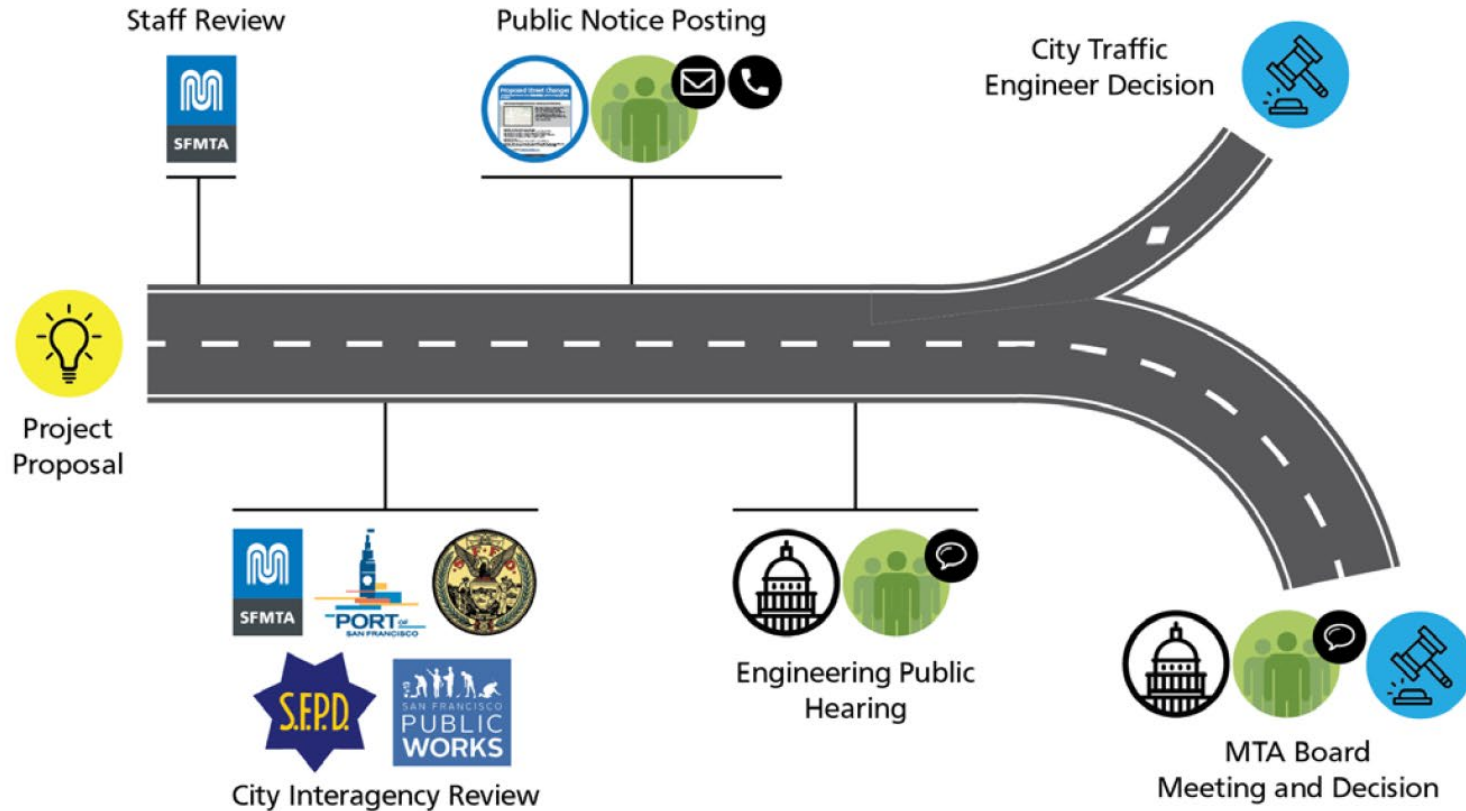
Conference Line: 888-398-2342

Participation Code: 8647385

[SFMTA.com/ENGSpeakerCard](https://sfmta.com/ENGSpeakerCard)

Proposed Street Changes

How does a proposed street change get approved?



<https://www.sfmta.com/committees/engineering-public-hearings>

Public Hearing Decision Posting

Results will be posted by
5 PM next Friday

<https://www.sfmta.com/calendar/engineering-public-hearing-meeting-october-16-2020>

Referenced Materials

Engineering Public Hearing Agenda, July 17, 2020

 [Engineering Public Hearing Agenda, July 17, 2020](#)

Engineering Public Hearing Results, July 17, 2020

 [Engineering Public Hearing Results, July 17, 2020](#)





SFMTA

October 16, 2020

Engineering Public Hearing

<https://meet.sfmta.com/meetings/ZN6KJBHY>

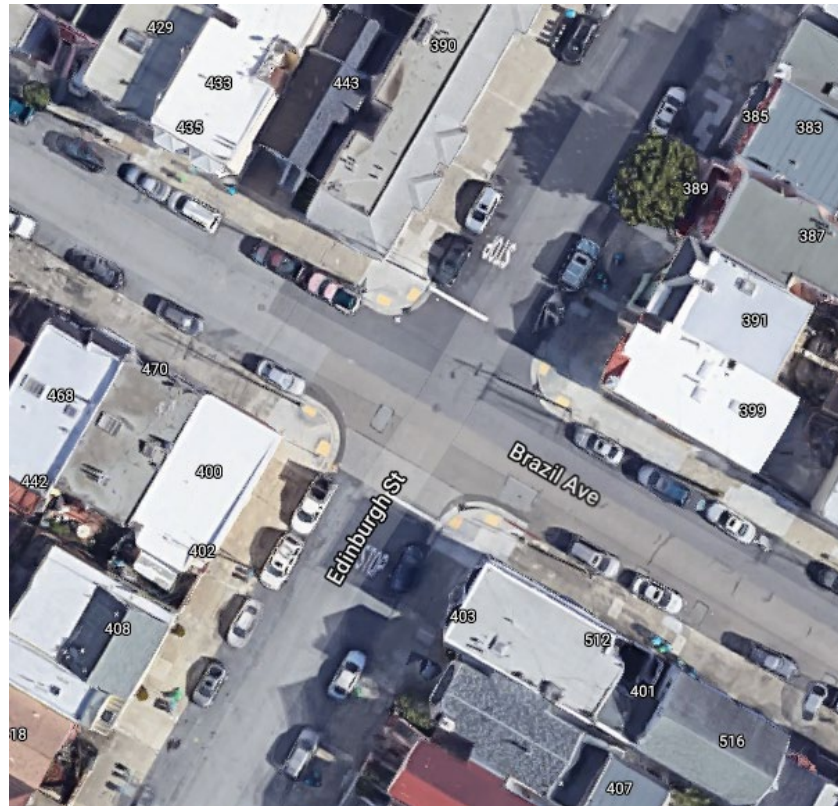
Conference Line: 888-398-2342

Participation Code: 8647385

[SFMTA.com/ENGSpeakerCard](https://www.sfmta.com/ENGSpeakerCard)

1. ESTABLISH - STOP SIGNS

Brazil Avenue, eastbound and westbound, at Edinburgh Street, making this intersection an all-way STOP ♦ (Supervisor District 11) Alvin Lam, Alvin.Lam@sfmta.com

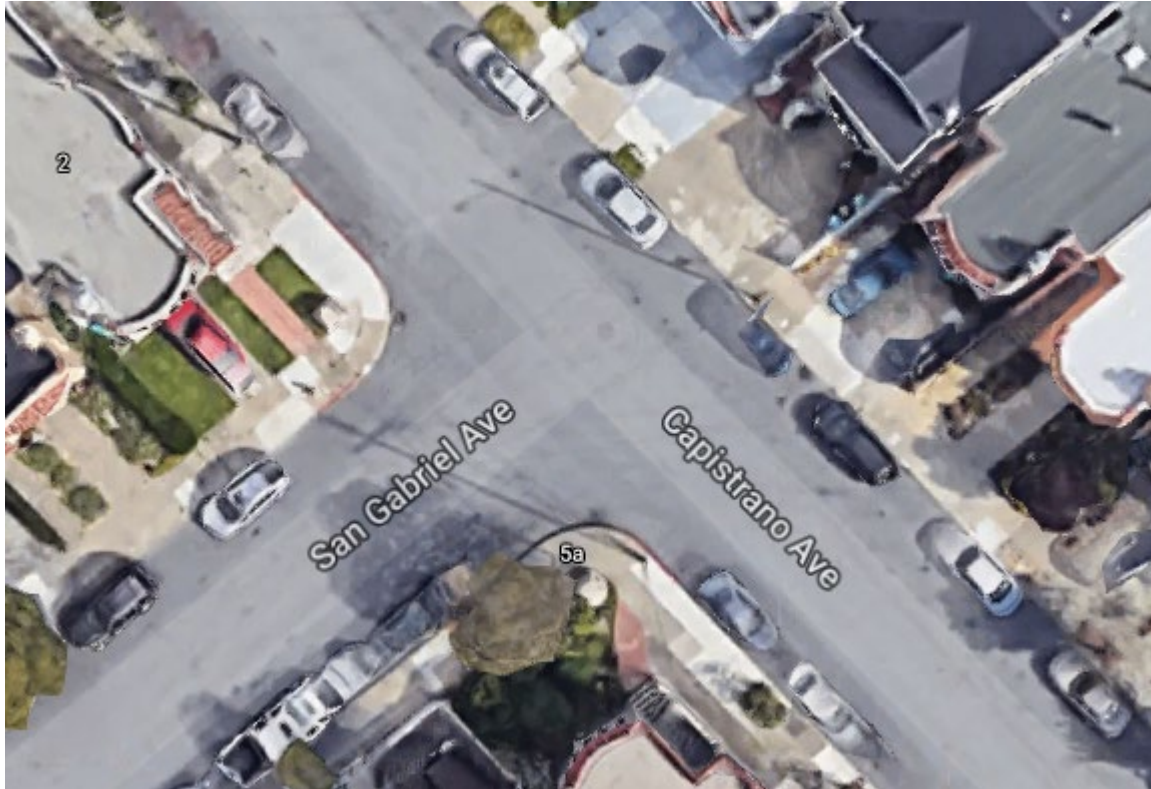


Conference Line: 1- 888-398-2342 (use participation code: 8647385)

To comment on an item, press "1" and then "0" when prompted.

2. ESTABLISH - STOP SIGNS

San Gabriel Avenue, eastbound, at Capistrano Avenue ♦
(Supervisor District 11) Alvin Lam, Alvin.Lam@sfmta.com

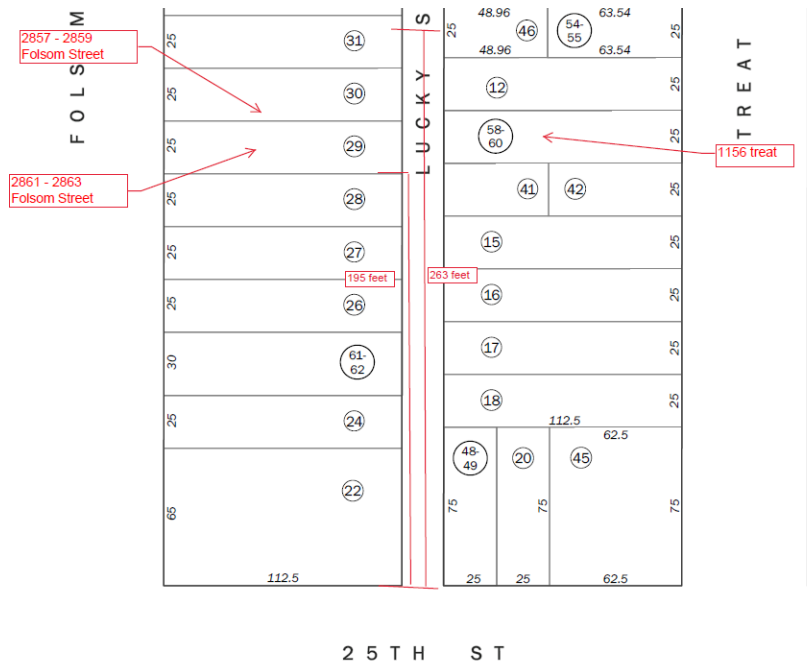


Conference Line: 1- 888-398-2342 (use participation code: 8647385)

To comment on an item, press "1" and then "0" when prompted.

**3. RESCIND - 1-HOUR PARKING, 9 AM TO 6 PM, MONDAY THROUGH SATURDAY,
EXCEPT VEHICLES WITH AREA I PERMITS
ESTABLISH - TOW AWAY, NO STOPPING ANYTIME**

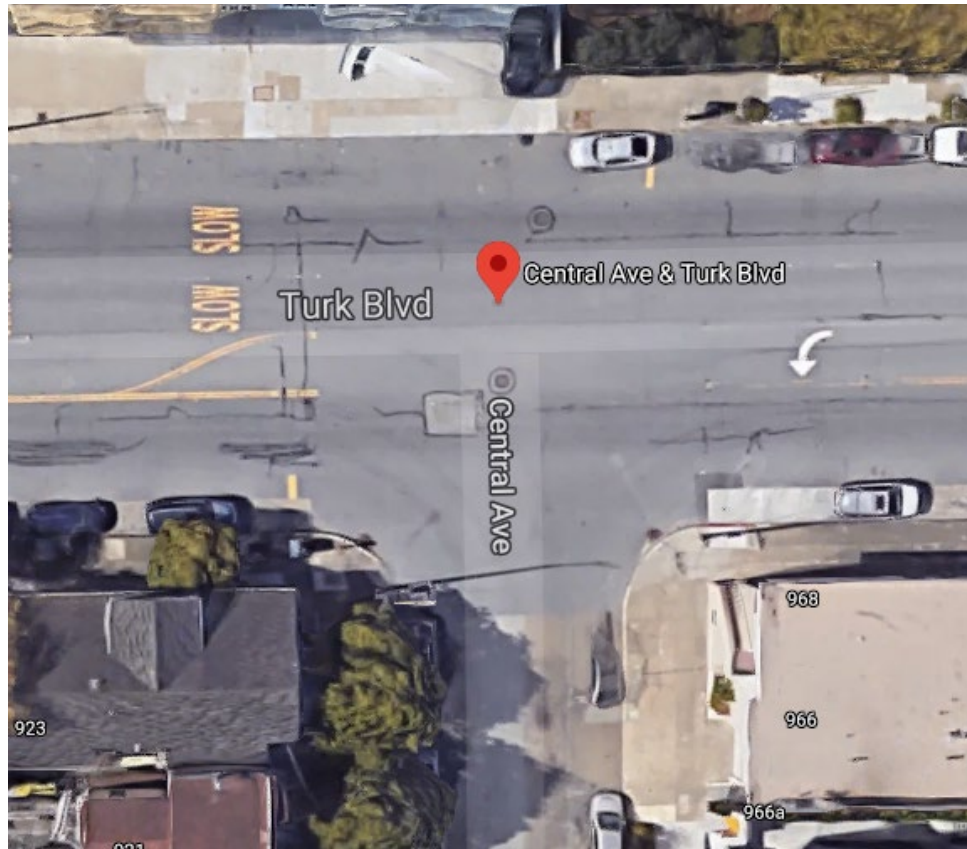
**Lucky Street, west side, from 195 feet to 263 feet north of 25th Street
(residents on both sides of the street remain eligible to purchase residential parking
permits and removes one RPP space) (Supervisor District 9) Alvin Lam,
Alvin.Lam@sfmta.com**



Conference Line: 1- 888-398-2342 (use participation code: 8647385)
To comment on an item, press "1" and then "0" when prompted.

4. ESTABLISH - STOP SIGNS

Central Avenue, northbound, at Turk Boulevard, stopping the stem of this "T" intersection ♦ (Supervisor District 2 and 5) Alvin Lam, Alvin.Lam@sfmta.com



Conference Line: 1- 888-398-2342 (use participation code: 8647385)

To comment on an item, press "1" and then "0" when prompted.

5. RESCIND - 2 HOUR PARKING, 8 AM THROUGH 10 PM, EVERYDAY, EXCEPT VEHICLES WITH AREA U PERMITS ESTABLISH - TOW-AWAY NO STOPPING FIRE LANE
Rogers Street, east side, from 195 to 275 feet south of Folsom Street (eliminates 4 parking spaces) (Supervisor District 6) Jeffrey Tom, jeffrey.tom@sfmta.com



Conference Line: 1- 888-398-2342 (use participation code: 8647385)

To comment on an item, press "1" and then "0" when prompted.

6. ESTABLISH - SPEED HUMPS

28th Street between Church Street and Dolores Street (2 speed humps) ♦
(Supervisor District 8) Daniel Carr, daniel.carr@sfmta.com



Conference Line: 1- 888-398-2342 (use participation code: 8647385)

To comment on an item, press "1" and then "0" when prompted.

7. ESTABLISH – BUS ZONE

Fitzgerald Avenue, south side, from Keith Street to 233 feet easterly (removes 6 parking spaces) (Supervisor District 10) Hester Yu, hester.yu@sfmta.com

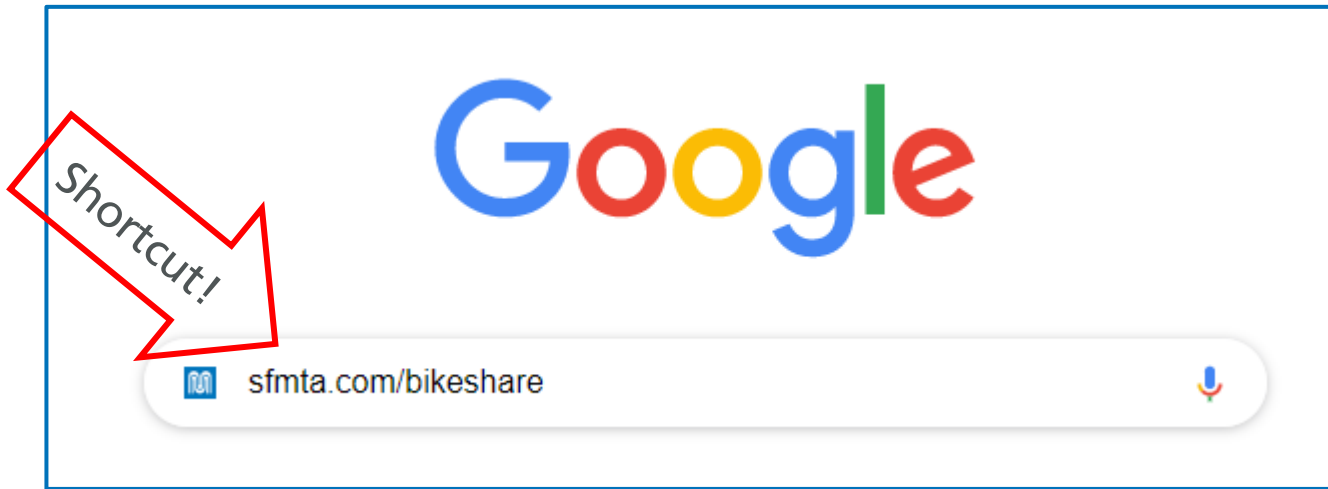


Conference Line: 1- 888-398-2342 (use participation code: 8647385)

To comment on an item, press "1" and then "0" when prompted.



<https://www.sfmta.com/getting-around/bike/bike-share>

A screenshot of a Google search page. The Google logo is centered at the top. Below it is a search bar containing the text 'sfmta.com/bikeshare'. A red arrow points from the search bar to the text 'Shortcut!' written in white. A microphone icon is visible on the right side of the search bar.

Quick Links

[Overview](#) | [Equity](#) | [Bikeshare's Purpose](#) | [System Planning and Station Siting](#) | [Bay Area Bike Share Pilot](#) | [Stationless Bikeshare](#) | [Bikeshare Data](#)

8. ESTABLISH – NO STOPPING EXCEPT BICYCLES

ESTABLISH – BIKE SHARE STATION

7th Street, east side, from 4 feet to 54 feet north of Brannan Street (50-foot bike share station) ♦ (Supervisor District 6) Pallavi Panyam, pallavi.panyam@sfmta.com



Conference Line: 1- 888-398-2342 (use participation code: 8647385)

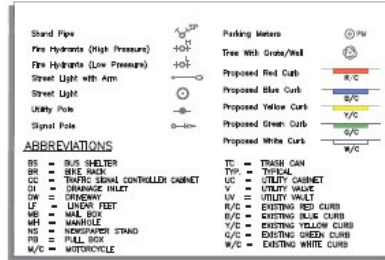
To comment on an item, press "1" and then "0" when prompted.

9. ESTABLISH – NO STOPPING EXCEPT BICYCLES ESTABLISH – BIKE SHARE STATION

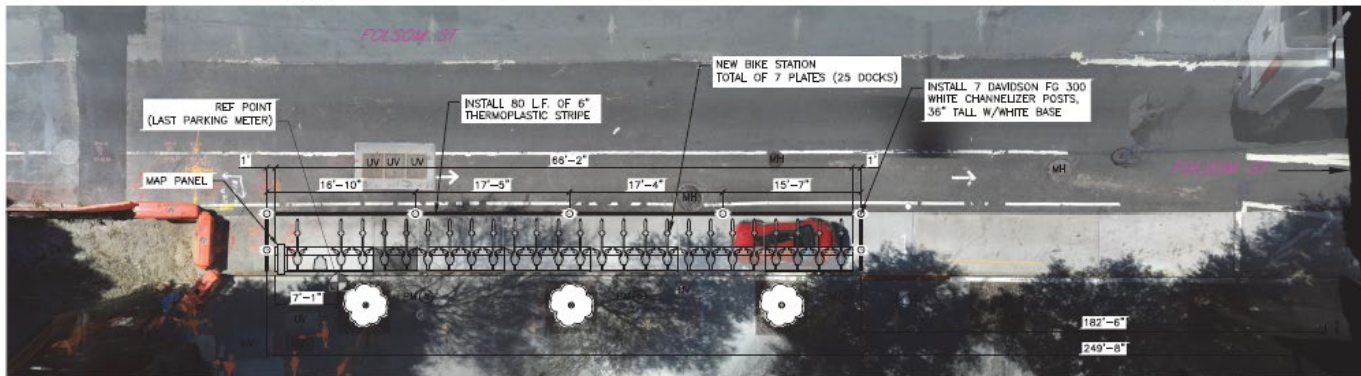
Folsom Street, south side, from 183 feet to 250 feet west of 2nd Street (66-foot bike share station) ♦ (Supervisor District 6) Pallavi Panyam, pallavi.panyam@sfmta.com



PLAN REFERENCE POINT
SITE LOCATION
NOT TO SCALE
Source: GrandView Services, JULY 2020



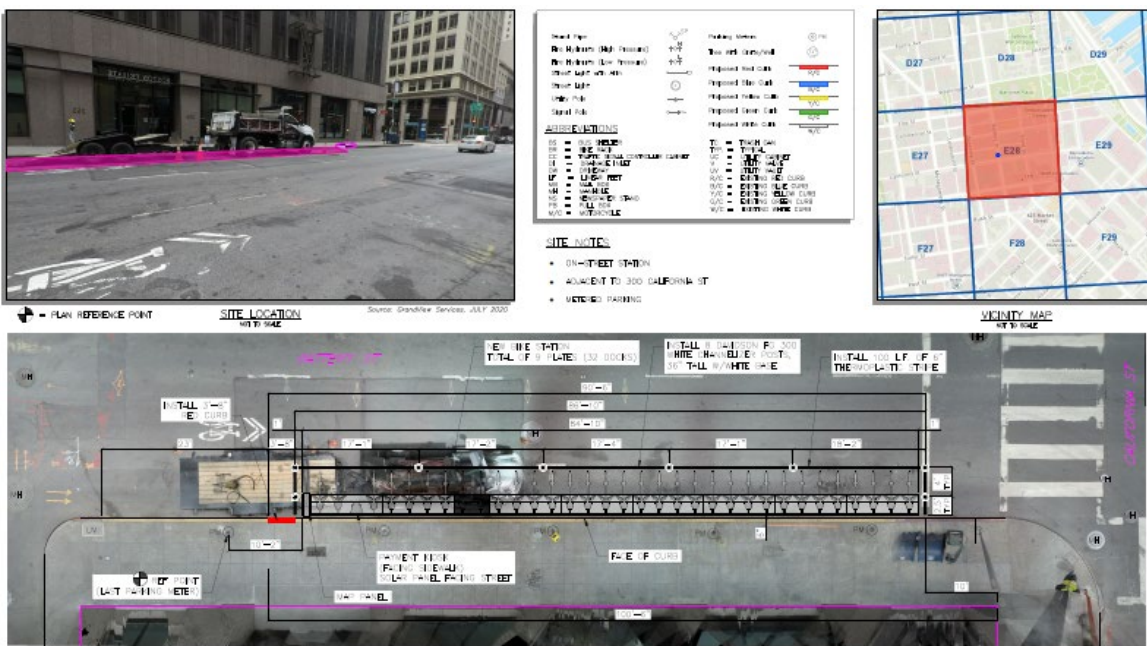
- SITE NOTES**
- ON-STREET STATION
 - ADJACENT TO 631 FOLSOM ST
 - METERED PARKING



Conference Line: 1- 888-398-2342 (use participation code: 8647385)
To comment on an item, press "1" and then "0" when prompted.

10(a). **RESCIND – METERED YELLOW COMMERCIAL LOADING ZONE, 7 AM TO 6 PM, MONDAY THROUGH FRIDAY**
 Battery Street, west side, from 13 feet to 89 feet north of California Street (4 spaces) ♦

10(b). **ESTABLISH – NO STOPPING EXCEPT BICYCLES**
ESTABLISH – BIKE SHARE STATION
 Battery Street, west side, from 13 feet to 91 feet north of California Street
 (84-foot station with red zones on either side) ♦
 (Supervisor District 3) Project Contact: Pallavi Panyam, Pallavi.Panyam@sfmta.com



Conference Line: 1- 888-398-2342 (use participation code: 8647385)
 To comment on an item, press "1" and then "0" when prompted.

11(a). RESCIND – METERED YELLOW COMMERCIAL LOADING ZONE, 7 AM TO 6 PM, MONDAY THROUGH FRIDAY

Grant Avenue, west side, from 3 feet to 47 feet north of Sutter Street (2 spaces) ♦

11(b). RESCIND – METERED YELLOW 6-WHEEL COMMERCIAL LOADING ZONE, 7 AM TO 6 PM, MONDAY THROUGH FRIDAY

Grant Avenue, west side, from 47 feet to 91 feet north of Sutter Street (2 spaces) ♦

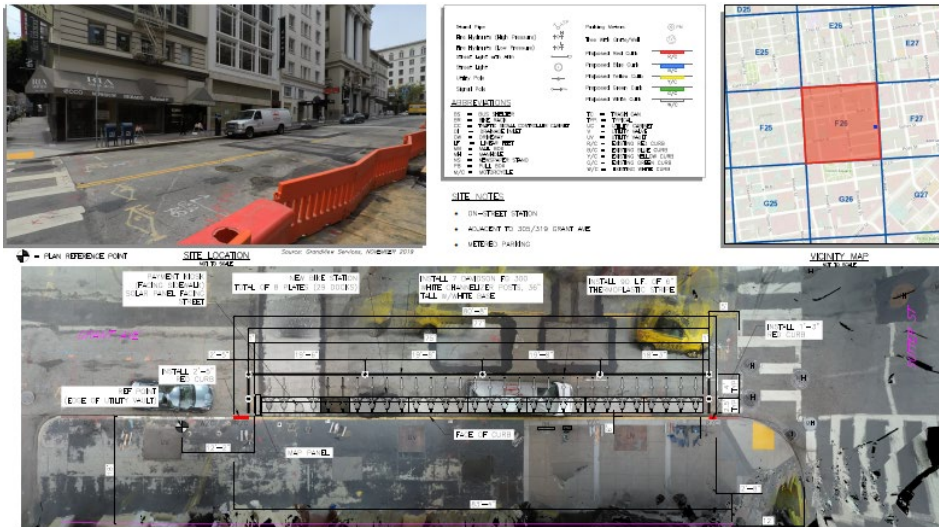
11(c). ESTABLISH - NO STOPPING EXCEPT BICYCLES

ESTABLISH - BIKE SHARE STATION

Grant Avenue, west side, from Sutter Street to 91 feet northerly

(81-foot station with red zones on either side) ♦

(Supervisor District 3) Project Contact: Pallavi Panyam, Pallavi.Panyam@sfmta.com



Conference Line: 1- 888-398-2342 (use participation code: 8647385)

To comment on an item, press "1" and then "0" when prompted.

Public Hearing Decision Posting

Results will be posted by
5 PM next Friday

<https://www.sfmta.com/calendar/engineering-public-hearing-meeting-october-16-2020>

Referenced Materials

Engineering Public Hearing Agenda, July 17, 2020

 [Engineering Public Hearing Agenda, July 17, 2020](#)

Engineering Public Hearing Results, July 17, 2020

 [Engineering Public Hearing Results, July 17, 2020](#)

