



**Welcome!**

**The J Church Improvements Public  
Hearing and Community Meeting will  
begin shortly**

Use [TellMuni@SFMTA.com](mailto:TellMuni@SFMTA.com) to submit a question at any  
time during the presentation



# J Church Transfer Improvements and Shared Spaces Opportunities

**Virtual Meeting and Public Hearing**

**July 25, 2020**

**Michael Rhodes, Project Manager**

# Welcome!

Thank you for joining us to learn more about and provide comment on the J Church Transfer Improvements Project.

This meeting will be recorded for public record and documentation.

Email [TellMuni@SFMTA.com](mailto:TellMuni@SFMTA.com) to provide comments and feedback.

To provide live public comments:

1. Call: 888-363-4734
2. Enter the code **7014320#**.
3. When public comment is open, key in "1" and then "0" to join the queue of people wishing to comment.
4. Each participant will have 2 minutes for public comments



# Instant poll #1: How did you learn about today's hearing?

We will be conducting instant polls today using Poll Everywhere.

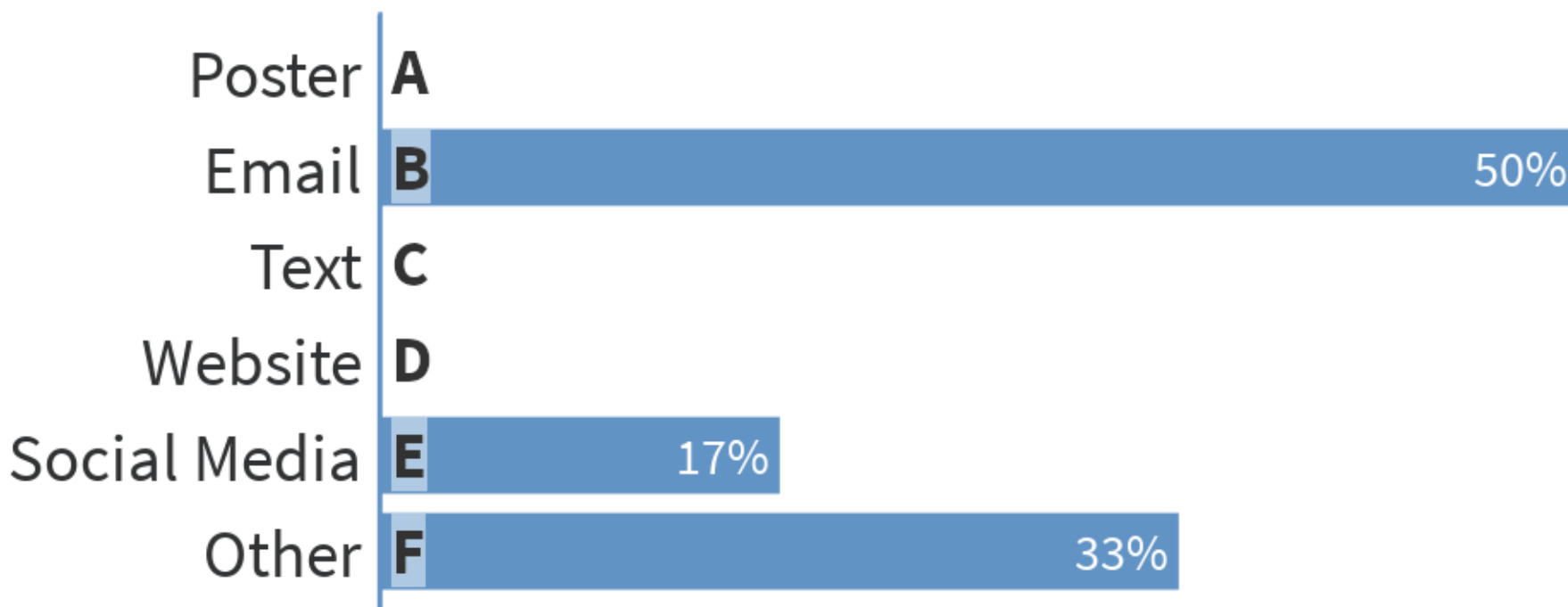
- When the poll is active, you can respond at [Pollev.com/sfmtaride](https://Pollev.com/sfmtaride)
- Text SFMTARIDE to 22333 once to join!



Respond at [Pollev.com/sfmtaride](https://Pollev.com/sfmtaride)

Text **SFMTARIDE** to **22333** once to join, then **A, B, C, D, E...**

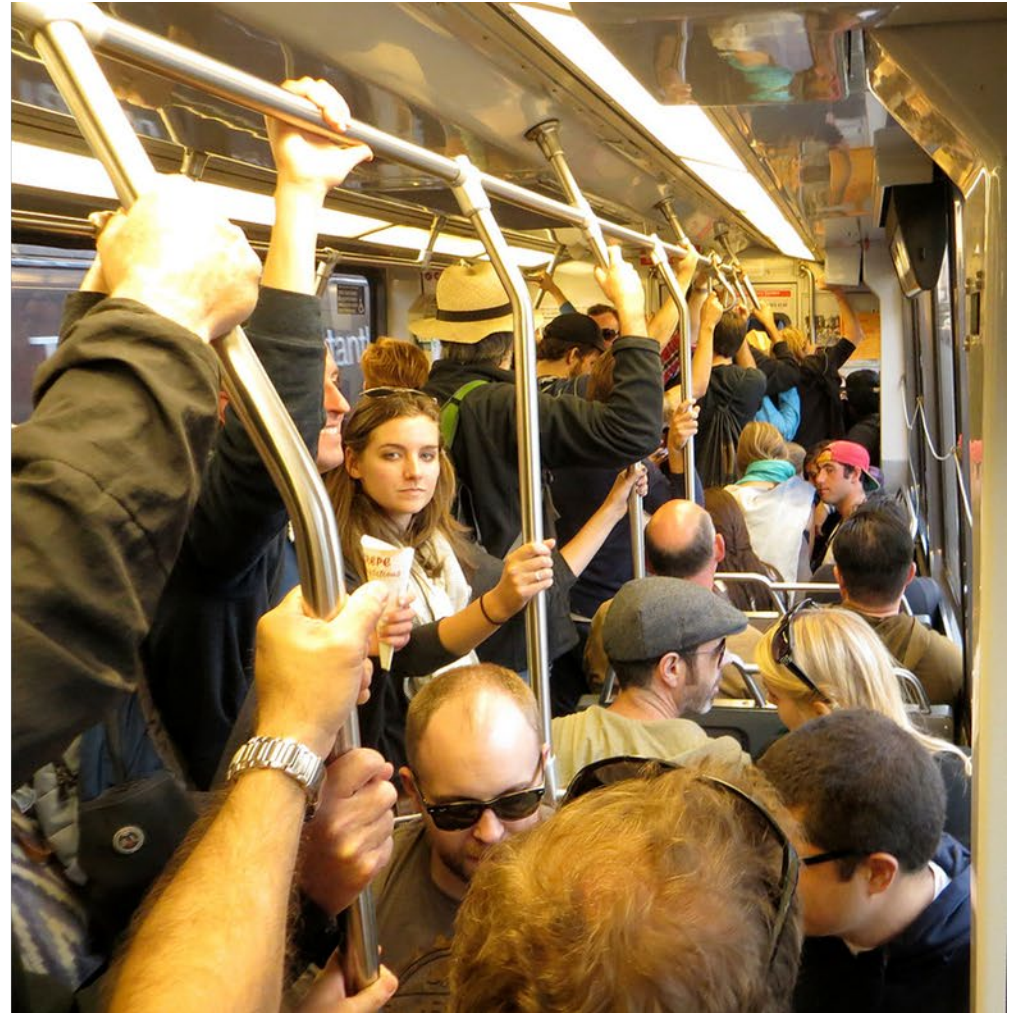
## How did you learn about today's hearing?



# Restoring Rail Service







# Why Remove Lines from the Subway

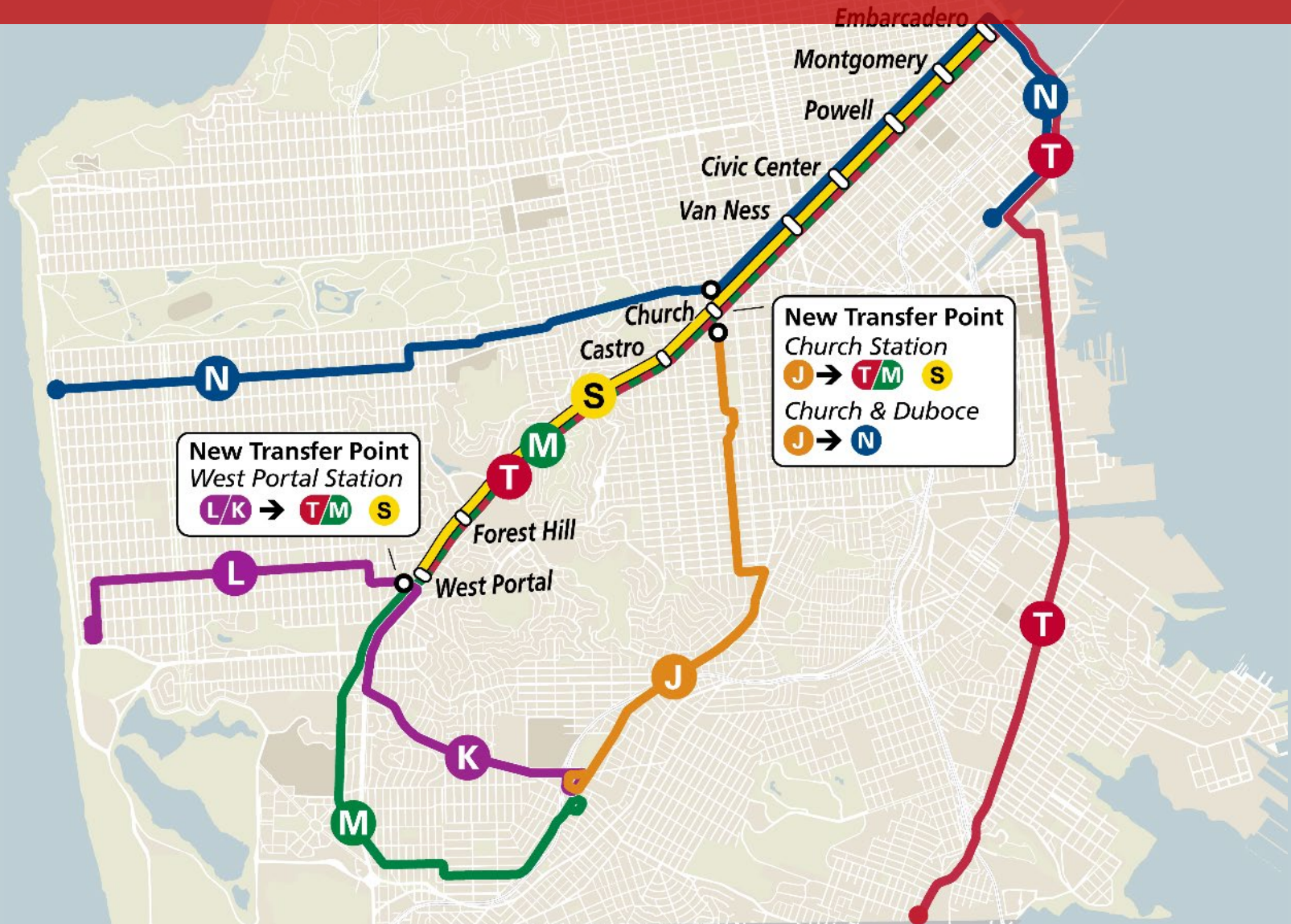
Pre-COVID-19 throughput of subway systems

- Before COVID, we were running more trains per hour in subway than we can process
- Queues of trains waiting at portals
- Slow travel time in the subway

Transit System	Trains/Hour
Muni (scheduled)	42
Muni (actual)	<b>34-40</b>
BART (current)	22
BART (projected with new train control)	30
NYC subway (old train control)	10
NYC subway (new train control)	38
Washington D.C.	26
Philadelphia	15
Boston	15



# J Church to Operate Above-Ground Only



# J Church Transfer Improvements

## Project Scope

- Temporary upgrades to pedestrian infrastructure on Church Street between 15<sup>th</sup> Street and Duboce
- Potential outdoor dining space on Church Street

## Goals

- Ensure a seamless transfer, especially for people with disabilities
- Support local businesses with outdoor dining space, increased foot traffic, reliable transit service, and efficient commercial loading



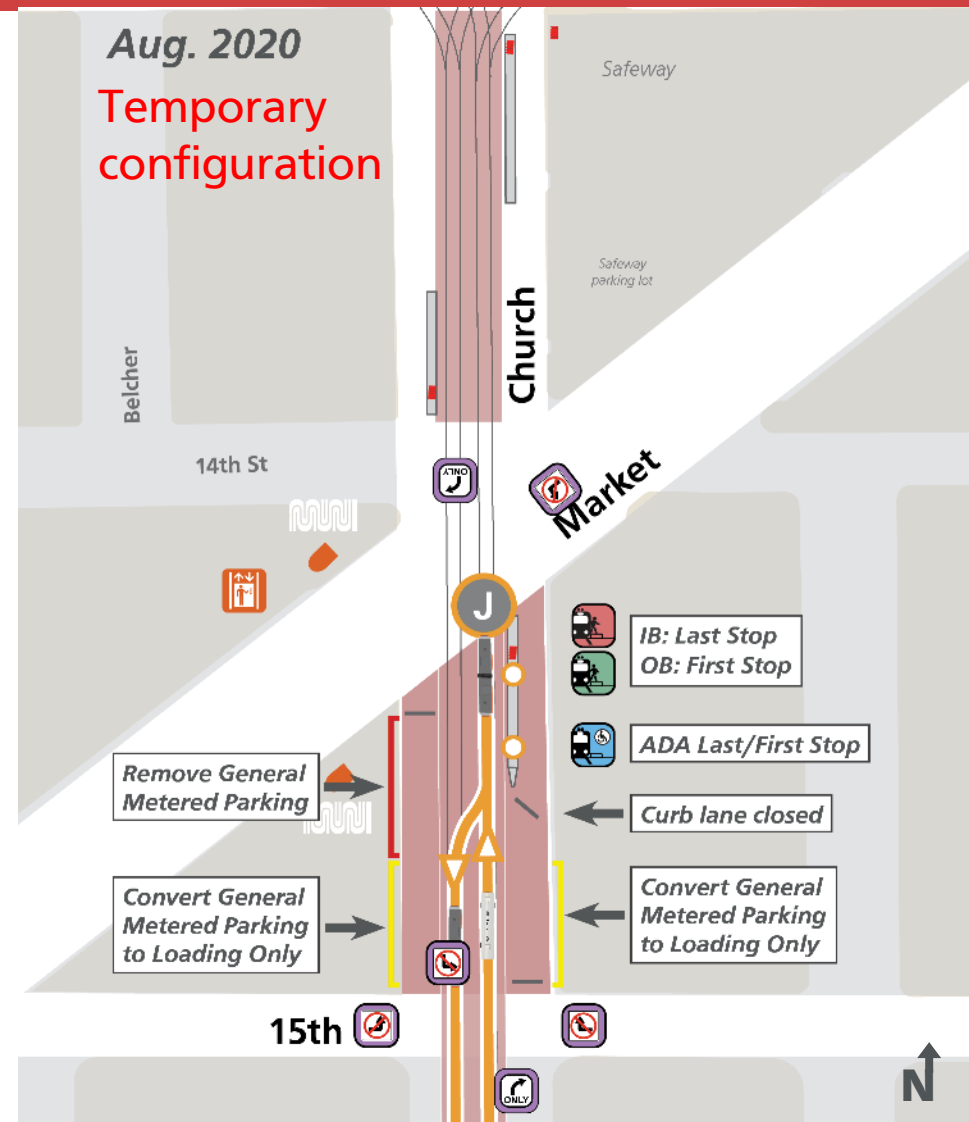
# Phase 1 (August)

## Proposed Initial Configuration

Temporarily uses existing accessible platform and boarding island as the last inbound and first outbound stop

Temporary traffic restrictions on Church between Market and 15<sup>th</sup>

- Create safe environment for passengers transferring between subway and J Church
- Reduce conflicts for J Church trains turning around to ensure reliability
- Maintain access for commercial loading and local access on Church Street, but other vehicles restricted





# Phase 2 (Fall)

## Proposed Medium-Term Temporary Configuration

New temporary accessible platforms

Service extended to Duboce Avenue to provide connection to N Judah

- New temporary accessible platform on Church at Duboce
- New temporary outbound stop on Church south of Market improves connection to subway
- Temporary traffic restrictions maintained between 15<sup>th</sup> and Market to continue providing safe transfer environment





# Accessibility Improvements

- In order to accommodate surface-only configurations for the J Church, we would construct new temporary accessible platforms at Market and Duboce





# Outdoor Dining and Retail Opportunities



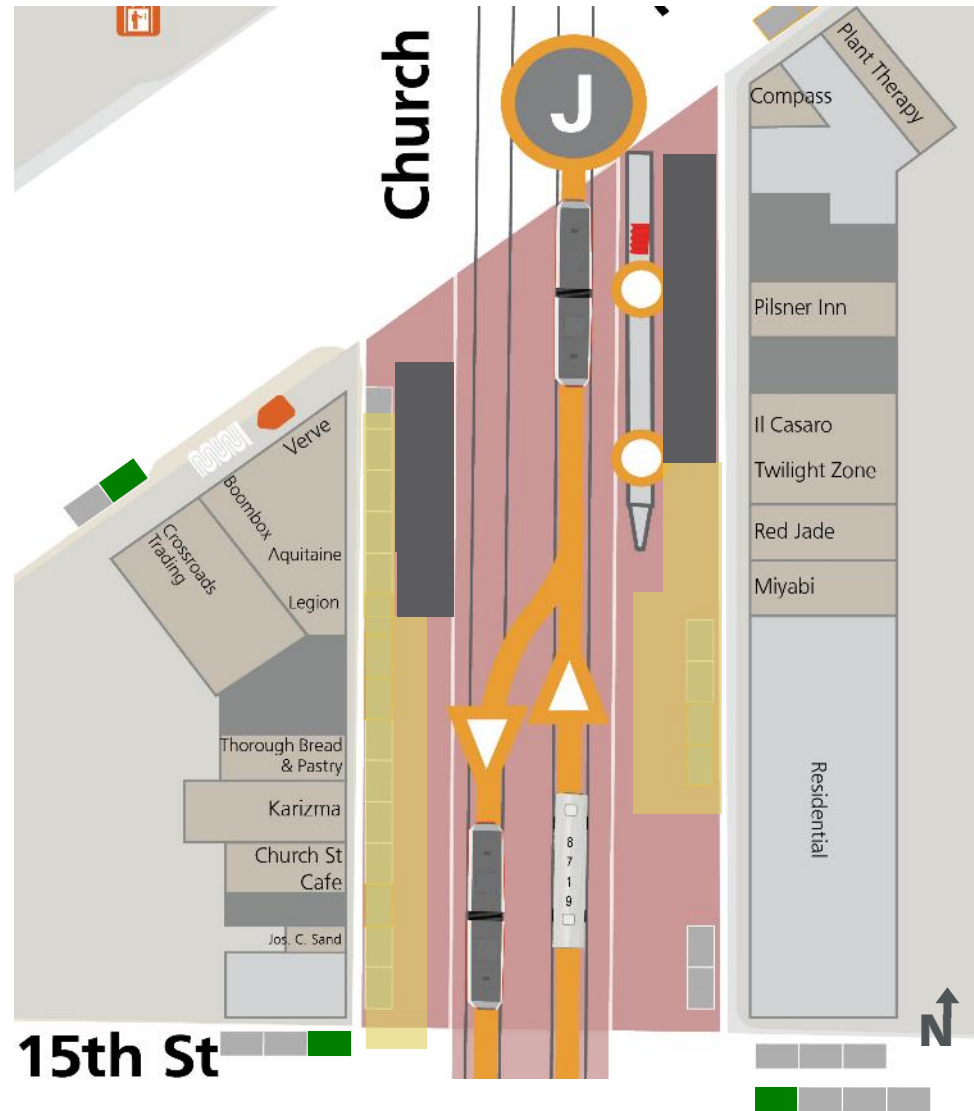


# Outdoor Dining Opportunities

- The project would create opportunities for outdoor dining spaces on the block between 15<sup>th</sup> and Market streets
- Staff are working with merchants to identify potential “Shared Spaces” dining zones and commercial loading solutions

Pedestrian zone

Potential dining zone



# Outdoor Dining Opportunities

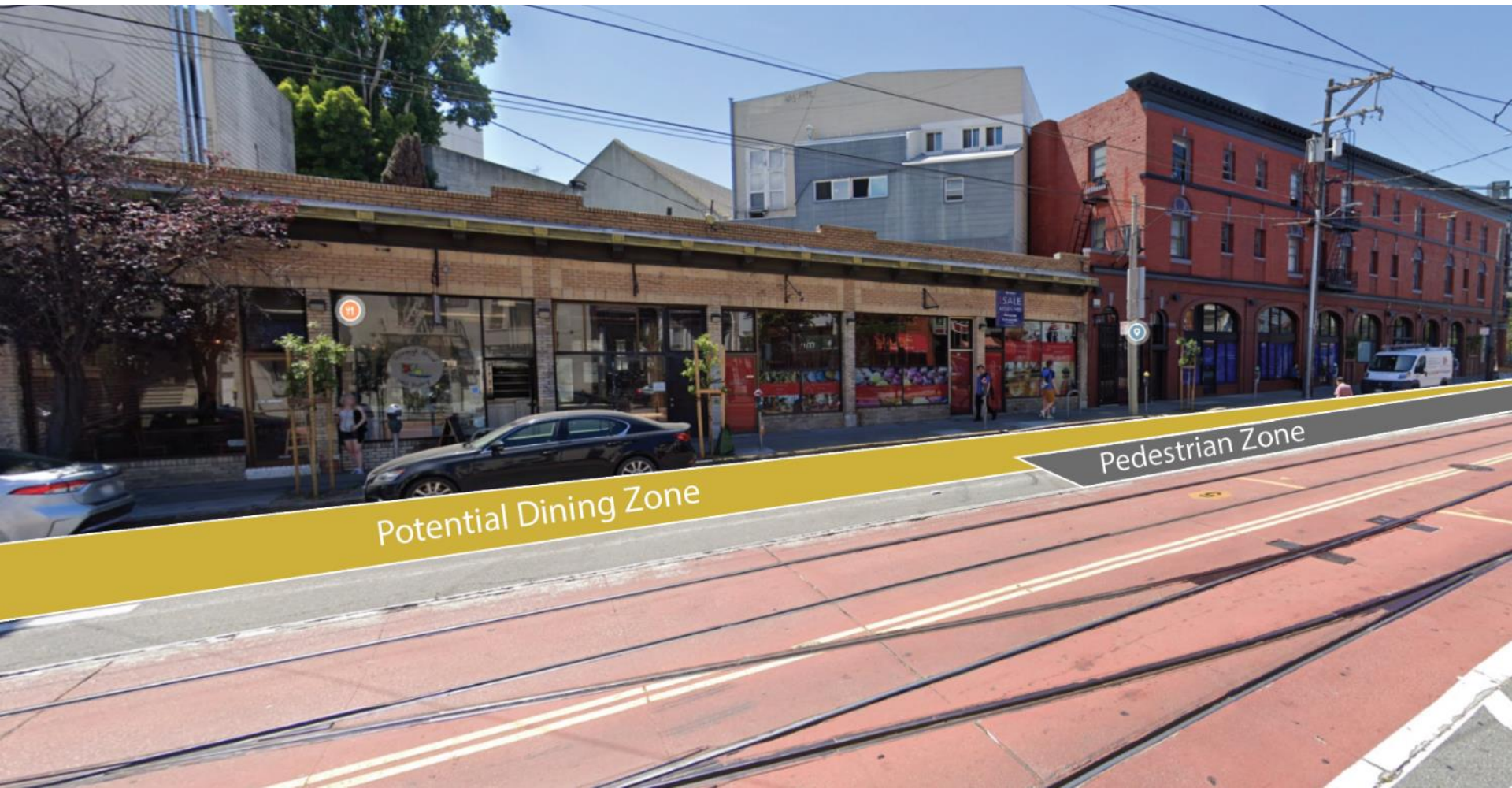


Ped  
Zone

Potential  
Dining  
Zone



# Outdoor Dining Opportunities



# Evaluation and Adjustments

- Community input will shape the evaluation framework, tools and monitoring, with a focus on public health, economic recovery and equity
- Proposal is temporary during the health crisis. Public engagement and evaluation will guide whether and what longer-term improvements are pursued, as well as any near-term adjustments.
- As we evaluate, which metrics are most important?



Photo taken before mask requirements



# Approval and Installation Timeline

- SFMTA is pursuing temporary authorization for these changes as an emergency measure to support public health, safety and economic recovery
- **Today:** Traffic and parking changes considered at public hearing
- **Late August:** Phase 1 implemented for restoration of rail service; ongoing monitoring and evaluation begins
- **Fall:** Phase 2 implemented in fall
- **Future:** Changes removed within 120 days after emergency order is lifted, unless there is a public process to make changes permanent



# Public Comment

## To provide public comment:

1. Call: 888-363-4734
2. Enter the code **7014320#**.
3. When public comment is open, key in "1" and then "0" to join the queue of people wishing to comment.
4. Each participant will have 2 minutes for public comments



# Instant poll #2: During the project's evaluation phase, what is your preferred way to give feedback?

We will be conducting instant polls today using Poll Everywhere.

- When the poll is active, you can respond at [Pollev.com/sfmtaride](https://Pollev.com/sfmtaride)
- Text SFMTARIDE to 22333 once to join!

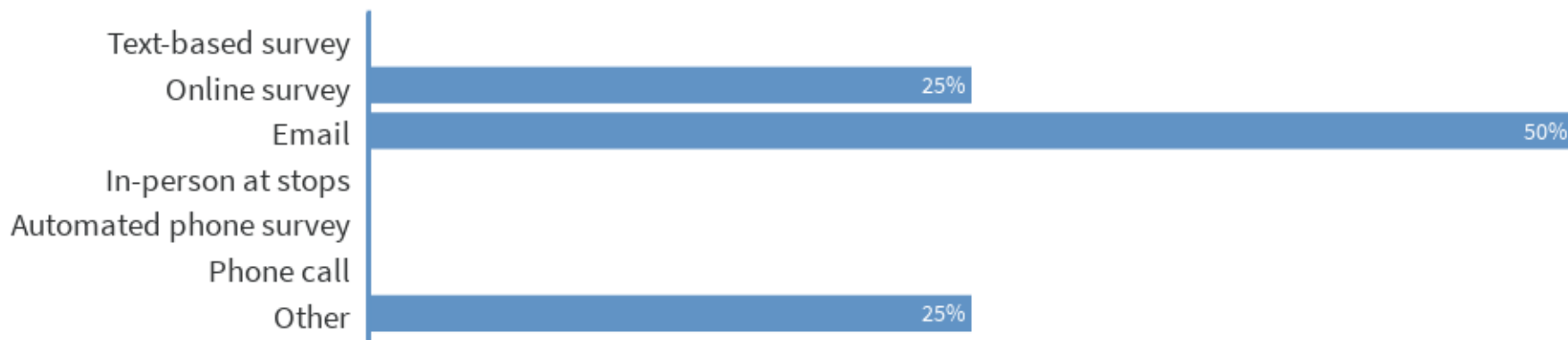




🗨 When poll is active, respond at [PollEv.com/sfmtaride](https://poll-ev.com/sfmtaride)

📱 Text **SFMTARIDE** to **22333** once to join

## What is your preferred way to give feedback on the proposed J Church Transfer Improvements?





# Summary of Feedback

# Instant poll #3: Are the project proposals clear and easy to understand?

We will be conducting instant polls today using Poll Everywhere.

- When the poll is active, you can respond at [Pollev.com/sfmtaride](https://Pollev.com/sfmtaride)
- Text SFMTARIDE to 22333 once to join!



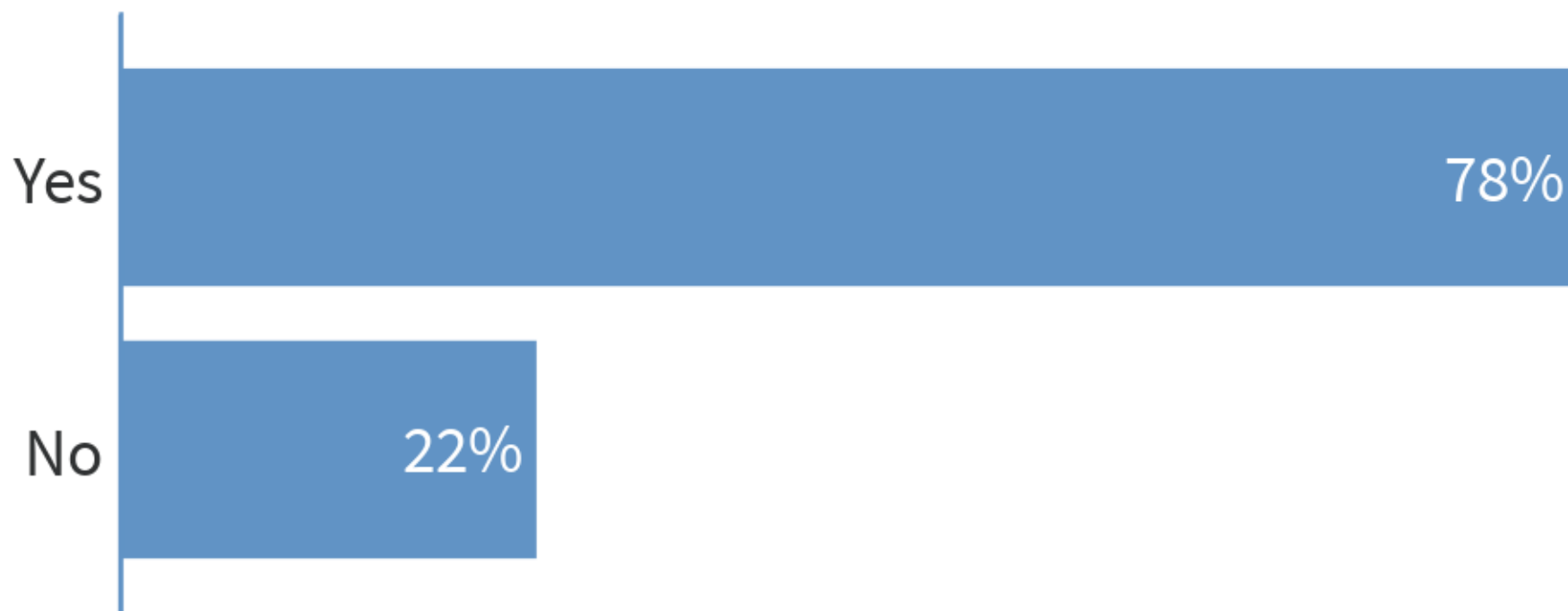




When poll is active, respond at [PolleEv.com/sfmtaride](https://PolleEv.com/sfmtaride)

Text **SFMTARIDE** to **22333** once to join

## Are the project proposals clear and easy to understand?



# Instant poll #4: Were your questions answered today?

We will be conducting instant polls today using Poll Everywhere.

- When the poll is active, you can respond at [Pollev.com/sfmtaride](https://Pollev.com/sfmtaride)
- Text SFMTARIDE to 22333 once to join!





When poll is active, respond at [PolleEv.com/sfmtaride](https://PolleEv.com/sfmtaride)

Text **SFMTARIDE** to **22333** once to join

## Were your questions answered today?



# Thank You

**SFMTA.com/JTransferProject**

[TellMuni@SFMTA.com](mailto:TellMuni@SFMTA.com)

415.646.2109

Please complete our demographic survey:

[bit.ly/SFMTASurvey](http://bit.ly/SFMTASurvey)

