

1: WELCOME

Fulton Street Safety Project

Please help us plan improvements for Fulton Street. This survey should take about 15 minutes to complete.

Let us know what you want to see on Fulton Street!

The San Francisco Municipal Transportation Agency (SFMTA) is considering changes to Fulton Street in the Richmond District in order to improve safety and convenience for all users. This survey will help us understand how Fulton Street residents and other Richmond District neighbors use Fulton to access the Richmond District and Golden Gate Park.

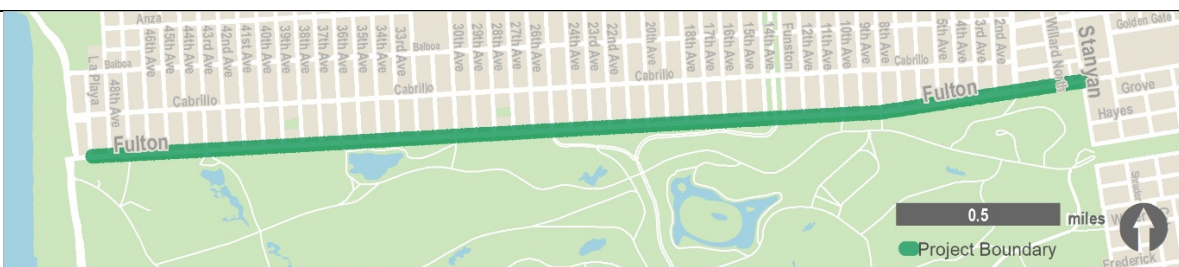


Project Timeline:





- Collect survey input during Fall 2019.
- Share proposals with the community in Winter 2019-20.
- Advance improvements to implementation in 2020.

Help us improve Fulton!

Help us plan improvements to Fulton Street which enhance safety and strengthen connections between the Richmond District and Golden Gate Park.



2: YOUR PRIORITIES

| | |
|--|---|
| <p>Transportation & Safety Goals</p> <p>Let us know which transportation and safety goals for Fulton Street are most important to you.</p> <p>Rank your top items:</p> <p>1. _____</p> <p>2. _____</p> <p>3. _____</p> | |
| <p>Reduce Speeding</p>  | <p>Pedestrian Visibility</p>  |
| <p>Implement measures which can reduce speeding by people driving on Fulton Street.</p> | <p>Daylight the area around corners and crosswalks to make people crossing the street more visible to drivers.</p> |
| <p>Comment: _____</p> <p>_____</p> | <p>Comment: _____</p> <p>_____</p> |
| <p>Sidewalk Space</p>  | <p>Reliable Transit</p>  |
| <p>Maximize space for people walking, using wheelchairs, and waiting for transit.</p> | <p>Ensure that local and rapid buses are able to meet their scheduled run times.</p> |
| <p>Comment: _____</p> <p>_____</p> | <p>Comment: _____</p> <p>_____</p> |

Bicycle Facilities



Provide new facilities such as bike signals to allow for bicycle priority.

Comment: _____

Parking Availability



Preserve on-street parking for private cars.

Comment: _____

Crossing Distances



Reduce the distance pedestrians must cross in the roadway by building curb extensions or bulb-outs.

Comment: _____

Suggest another priority: _____

3: TOUGH DECISIONS

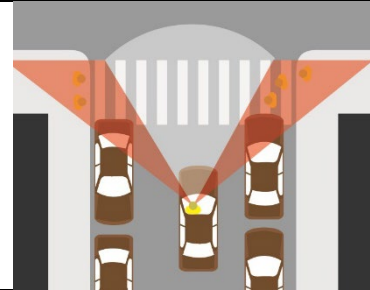
Tell Us What You Would Do

Let us know how you would balance the trade-offs between different alternatives to pursue on Fulton Street.

For each tradeoff, select the arrow that best represents your position.

Daylighting: Improve visibility or preserve parking

Choose the option that best shows which tradeoff you prefer.



<<

<

0

>

>>

Improve pedestrian visibility and safety with red curbs.

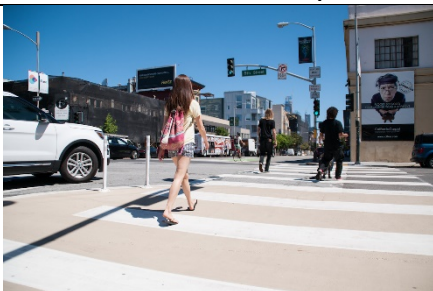
Neutral

Preserve parking near corners and crosswalks.

Optional Comment: _____

Small vs Large: Scale of improvements

Choose the option that best shows which tradeoff you prefer.



<<

<

0

>

>>

More improvements along Fulton with low cost measures (like paint).

Neutral

Fewer but larger enhancements with concrete at one or two intersections.

Optional Comment: _____

Biking: 23rd Avenue Bicycle Route

Choose the option that best shows which tradeoff you prefer.



<<

<

0

>

>>

Direct, signalized access to the Park limiting travel on Fulton.

Neutral

Flatter route, even if it requires biking a longer distance on Fulton.

Optional Comment: _____

Traffic Speeds: Speed and safety

Choose the option that best shows which tradeoff you prefer.



<<

<

0

>

>>

Improve safety by reducing vehicle speeding.

Neutral

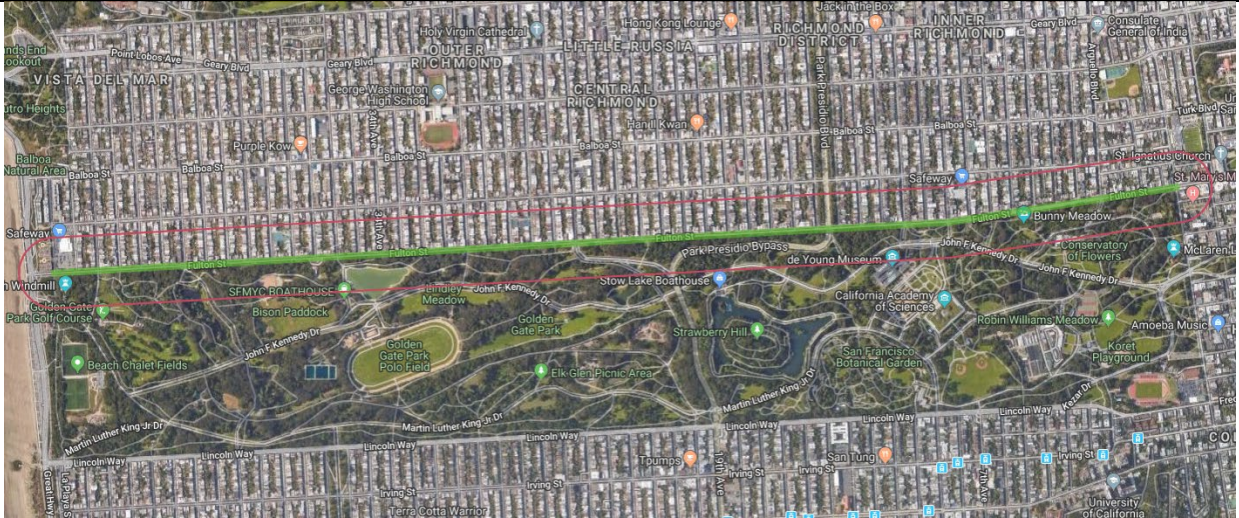
Smaller safety measures which preserve vehicle flow.

Optional Comment: _____

4: MAKE YOUR MAP

Map Your Concerns and Ideas

Let us know where you see issues and opportunities for improvement on Fulton Street, as well as the places you want to travel to and from. Place a marker and add your ideas and concerns.



| | | |
|--|---|--|
| <ul style="list-style-type: none"> ○ Safety Issues ○ Ideas ○ Destinations | <p>Location: _____</p> <p>_____</p> <p>_____</p> | <p>Comment: _____</p> <p>_____</p> <p>_____</p> |
| <ul style="list-style-type: none"> ○ Safety Issues ○ Ideas ○ Destinations | <p>Location: _____</p> <p>_____</p> <p>_____</p> | <p>Comment: _____</p> <p>_____</p> <p>_____</p> |
| <ul style="list-style-type: none"> ○ Safety Issues ○ Ideas ○ Destinations | <p>Location: _____</p> <p>_____</p> <p>_____</p> | <p>Comment: _____</p> <p>_____</p> <p>_____</p> |
| <ul style="list-style-type: none"> ○ Safety Issues ○ Ideas ○ Destinations | <p>Location: _____</p> <p>_____</p> <p>_____</p> | <p>Comment: _____</p> <p>_____</p> <p>_____</p> |

5: THANK YOU

| | |
|--|--|
| Wrap Up | |
| Thank you for your input so far! | |
| <i>Please answer a few optional questions. This helps us understand your input better.</i> | |
| <i>Your private information will be kept private.</i> | |
| Where do you live? <ul style="list-style-type: none"><input type="radio"/> On or near Fulton Street by Golden Gate Park<input type="radio"/> Another part of the Richmond District<input type="radio"/> Another part of San Francisco<input type="radio"/> Somewhere else | How often do you visit the Park using Fulton? <ul style="list-style-type: none"><input type="radio"/> Daily<input type="radio"/> Weekly<input type="radio"/> Monthly<input type="radio"/> Less than once a month |
| What is your age? <ul style="list-style-type: none"><input type="radio"/> 0-18 years<input type="radio"/> 19-29 years<input type="radio"/> 30-39 years<input type="radio"/> 40-49 years<input type="radio"/> 50-64 years<input type="radio"/> 65 years or older | Is your household income over \$50,000 a year? <ul style="list-style-type: none"><input type="radio"/> Yes<input type="radio"/> No<input type="radio"/> Decline to answer |
| How do you identify your ethnic background? <ul style="list-style-type: none"><input type="radio"/> Asian/Pacific Islander<input type="radio"/> Black/African-American<input type="radio"/> Hispanic/Latino/a/x<input type="radio"/> White<input type="radio"/> Other<input type="radio"/> Decline to answer | |
| What else do you want us to know? _____ _____ _____ _____ | |
| Thank you for taking the survey. Your input will help us plan improvements for the Fulton Safety Project. | |
| Return completed surveys to: Email: anna.harkman@sfmta.com Mail: SFMTA, Attn: Anna Harkman 1 S Van Ness Avenue, 7th Floor San Francisco, CA 94103 | |