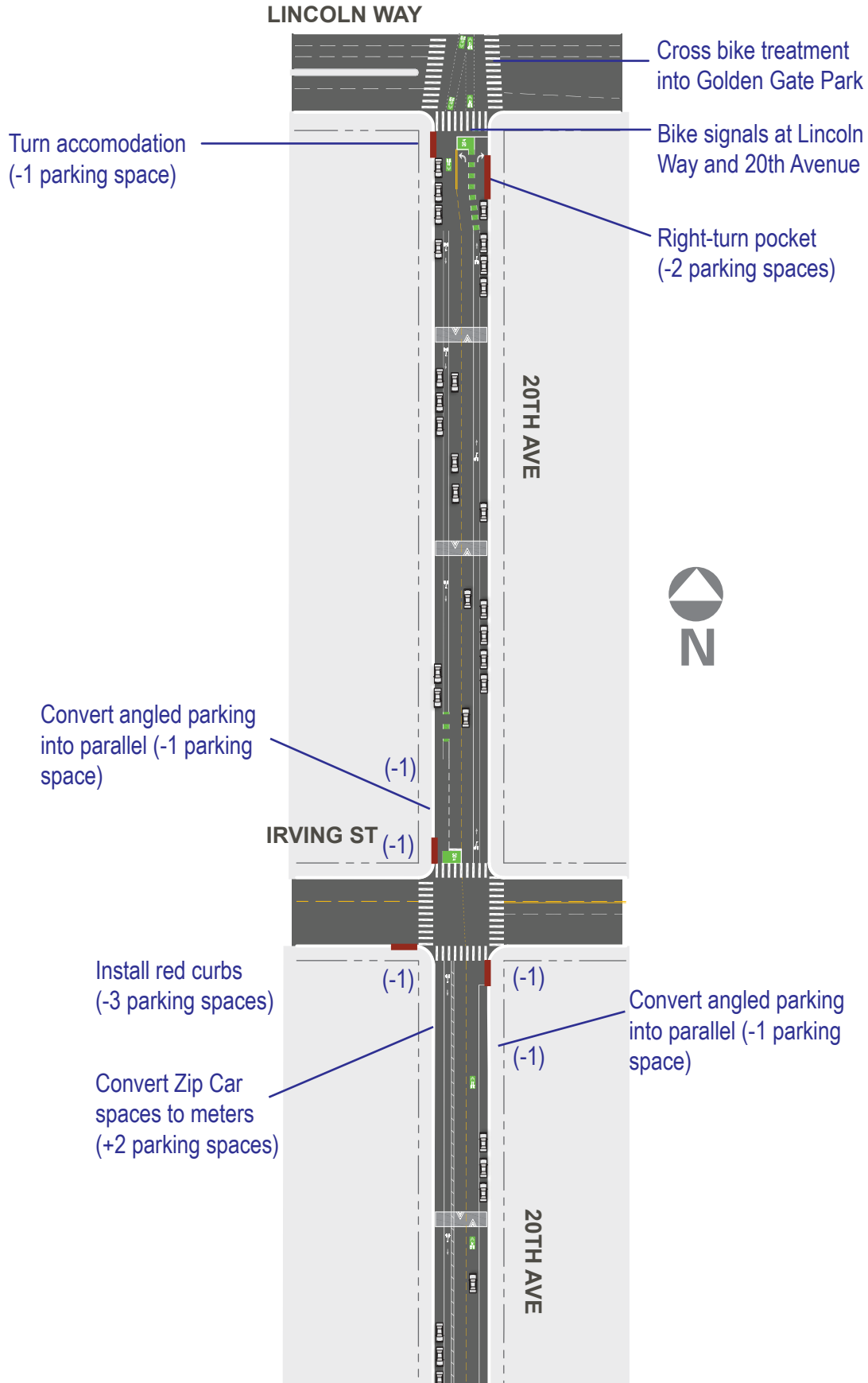




SFMTA

20th Avenue Proposed

*For illustrative purposes only



Bulb-out
(-1 parking space)

JUDAH ST (-1)

Rectangular Rapid
Flashing Beacon

20TH AVE

KIRKHAM ST (-1)

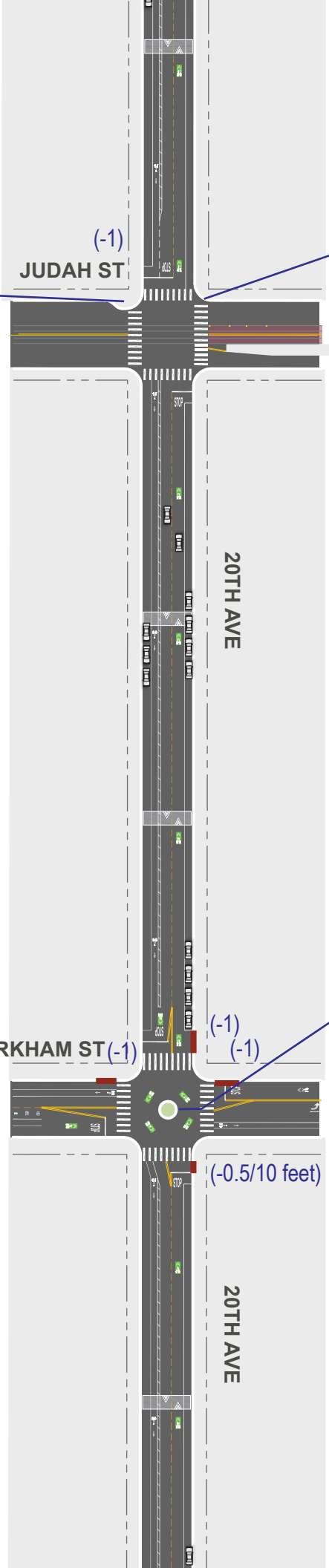
(-1)
(-1)

Traffic Circle

Install red curbs
(-3.5 parking spaces)

(-0.5/10 feet)

20TH AVE



Install red curb
(-2.5 parking spaces)

(-1)
LAWTON ST

(-0.5/10 feet)

(-1)

Convert to back-in angled
parking (-1 parking space)

(-1)

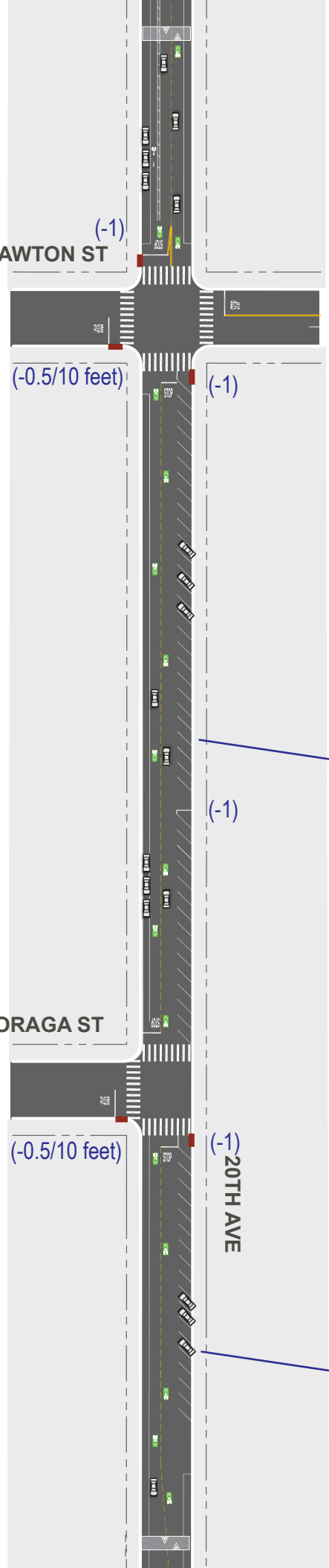
MORAGA ST

Install red curbs
(-1.5 parking spaces)

(-0.5/10 feet)

(-1)
20TH AVE

Convert to back-in angled
parking



(-1)
NORIEGA ST

Install red curbs
(-1 parking spaces)

20TH AVE

Install red curbs
(-2 parking spaces)

(-0.5/10 feet)
ORTEGA ST

(-0.5/10 feet)

(-1)
(-4)

Convert angled parking
to parallel parking
(-4 parking spaces)



20TH AVE

PACHECO ST

New angled parking (+2 parking spaces)

Install red curbs (-2 parking spaces)

(-1)

(-1)

20TH AVE

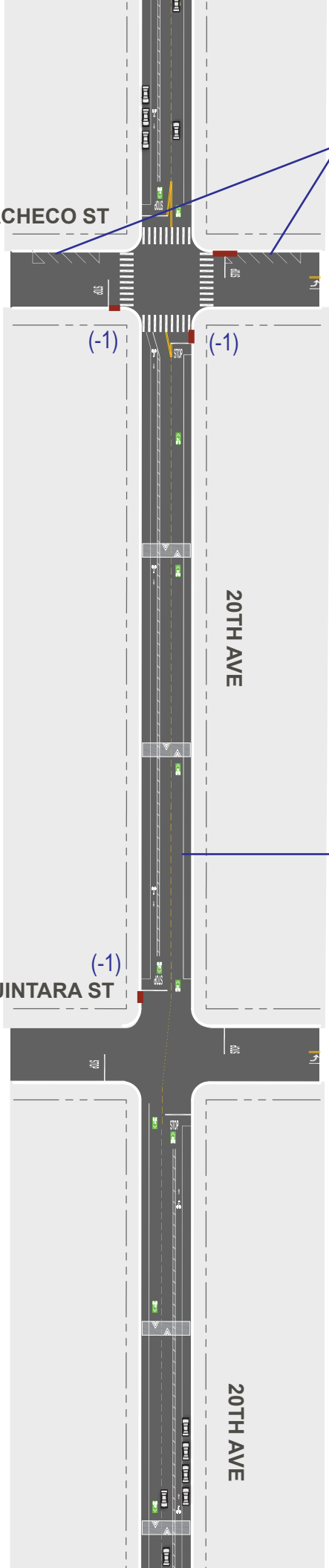
Convert angled parking to parallel parking (- 3 parking spaces)

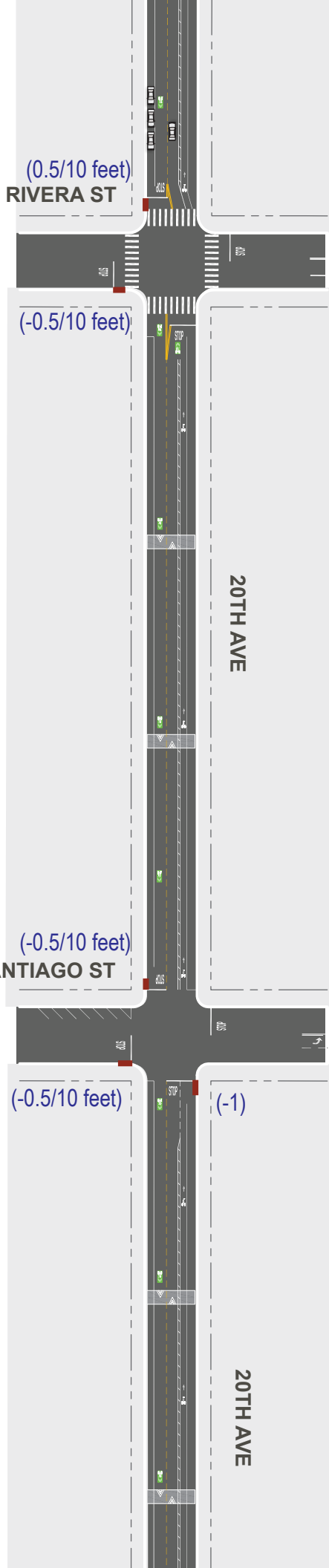
Install red curbs (-1 parking space)

(-1)

QUINTARA ST

20TH AVE





TARAVAL ST

Previously approved bulbs and boarding island (part of Taraval St. Project)

Convert to back-in angled parking

20TH AVE

(-0.5/10 feet)
ULLOA ST
(-1)

Traffic Circle

Install red curbs
(-5.5 parking spaces)

(-0.5/10 feet)
(-1)

(-1)
(-0.5/10 feet)

20TH AVE



VICENTE ST

(-0.5/10 feet)

(-0.5/10 feet)

Install red curbs
(-1 parking space)

20TH AVE

WAWONA ST

