

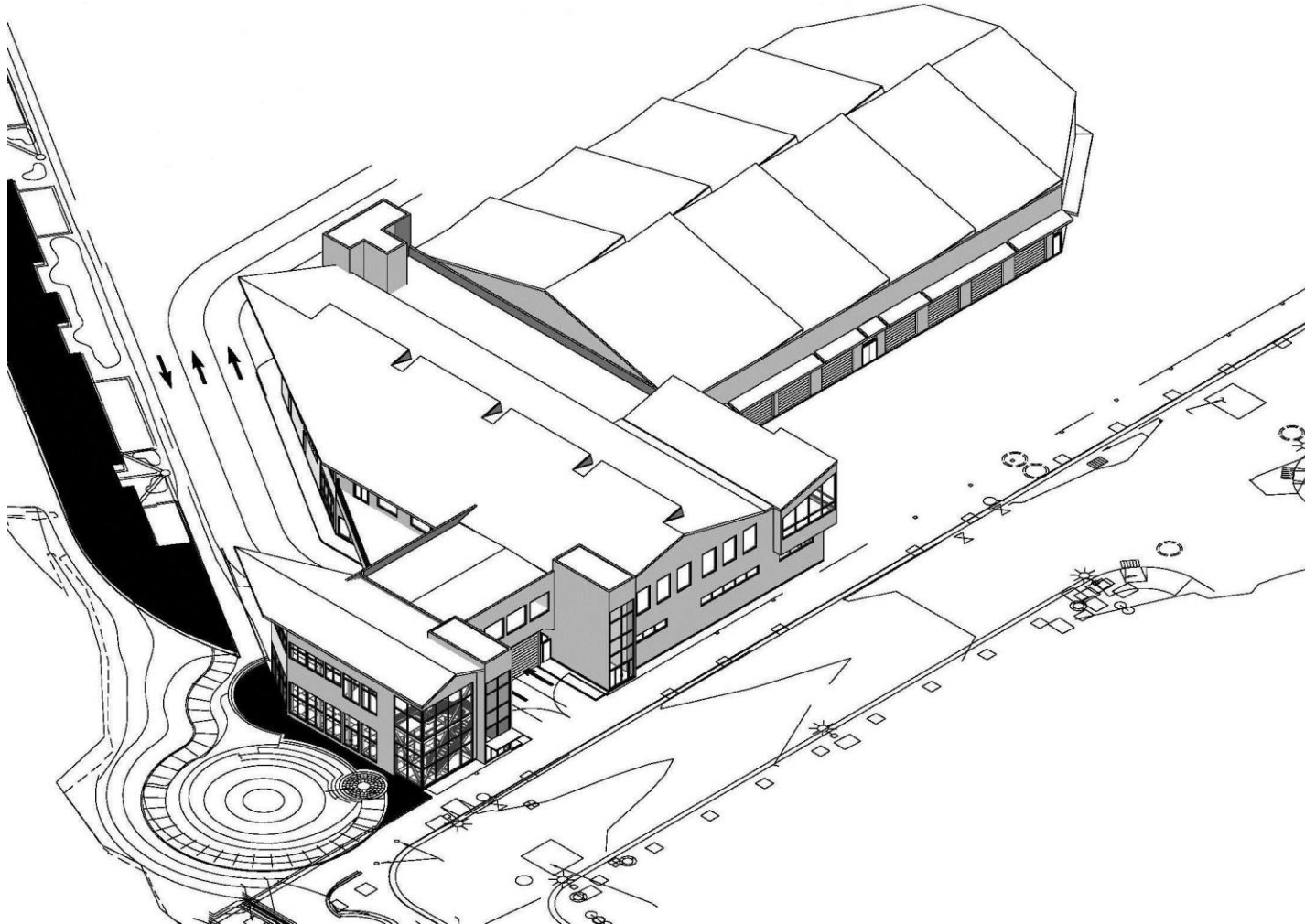


**ISLAIS CREEK
MOTOR COACH
MAINTENANCE &
OPERATIONS FACILITY
Phase II**

**Lisa Chow
Project Manager**



Construction of a two-story, 66,000 square foot operations and maintenance facility for the diesel-electric hybrid articulated buses.





Progress:

- Perform utility relocation
- Drive piles for the north and south buildings
- Began erecting steel for south building

Next Steps:

- Continue with pile cap and grade beam, and electrical pullbox installation and erection of steel structure.



Pile Driving





General Excavation





Pile Installation





Pile Cap Excavation



03/31/2016 10:02



Electrical Pullbox Installation





Steel Erection

