



SFMTA
Municipal
Transportation
Agency

Long Range Transit Planning Update

June 29, 2016
SFMTA EMSC

Rail Capacity Strategy – Near-term Investments

NAME / PROJECT DESCRIPTION	BENEFITS	TIMELINE	COST
West Portal Conflict Reduction: <ul style="list-style-type: none"> Restrict conflicting turn movements Replace magnetized rail segments 	<ul style="list-style-type: none"> Improved Reliability Improved Travel Time 	<3 Years	\$1.5m (Pilot only)
Muni Metro Extension Turnback Track: <ul style="list-style-type: none"> Construct pocket track east of Harrison Street 	<ul style="list-style-type: none"> Improve Passenger Comfort Improve Reliability Improve Travel Time 	4–5 Years	\$8.5m
Muni Metro Extension Surface Train Control System: <ul style="list-style-type: none"> Upgrade existing Transit Signal Priority along Embarcadero from Ferry Portal to 4th and King and south along 3rd Street to 16th Street 	<ul style="list-style-type: none"> Improved Passenger Comfort Improved Reliability Improved Travel Time 	3–5 Years	\$10.5m
Church & Duboce Portal Conflict Reduction: <ul style="list-style-type: none"> Analyze vehicle or turn prohibition and improved pedestrian and bicycle circulation 	<ul style="list-style-type: none"> Improved Reliability Improved Travel Time 	2–5 Years	\$0.5m (Planning only)

RAIL CAPACITY STRATEGY

- West Portal Conflict Reduction
- Muni Metro Extension Turnback Track
- Muni Metro Extension Transit Signal Enhancements/Embarcadero Tramways
- Church and Duboce Portal Conflict Reduction

\$20M

MUNI FORWARD

- 22 Filmore: 16th St Transit Priority Project
- 14 Mission: Downtown Mission Transit Priority Project
- L Taraval: Transit and Streetscape Enhancements
- See Muni Forward Implementation Plan for additional projects

\$225M

MAJOR CORRIDORS

- Van Ness Bus Rapid Transit
- Geary Bus Rapid Transit
- Better Market Street
- M-Line/19th Avenue Core Capacity Project

\$475M

SPOT IMPROVEMENTS

- Transit Spot Improvements & Red Lanes
- Overhead Catenary System

\$115M

Total Need: \$835M

Funding Gap:
\$144M

Estimated Revenue: \$691M

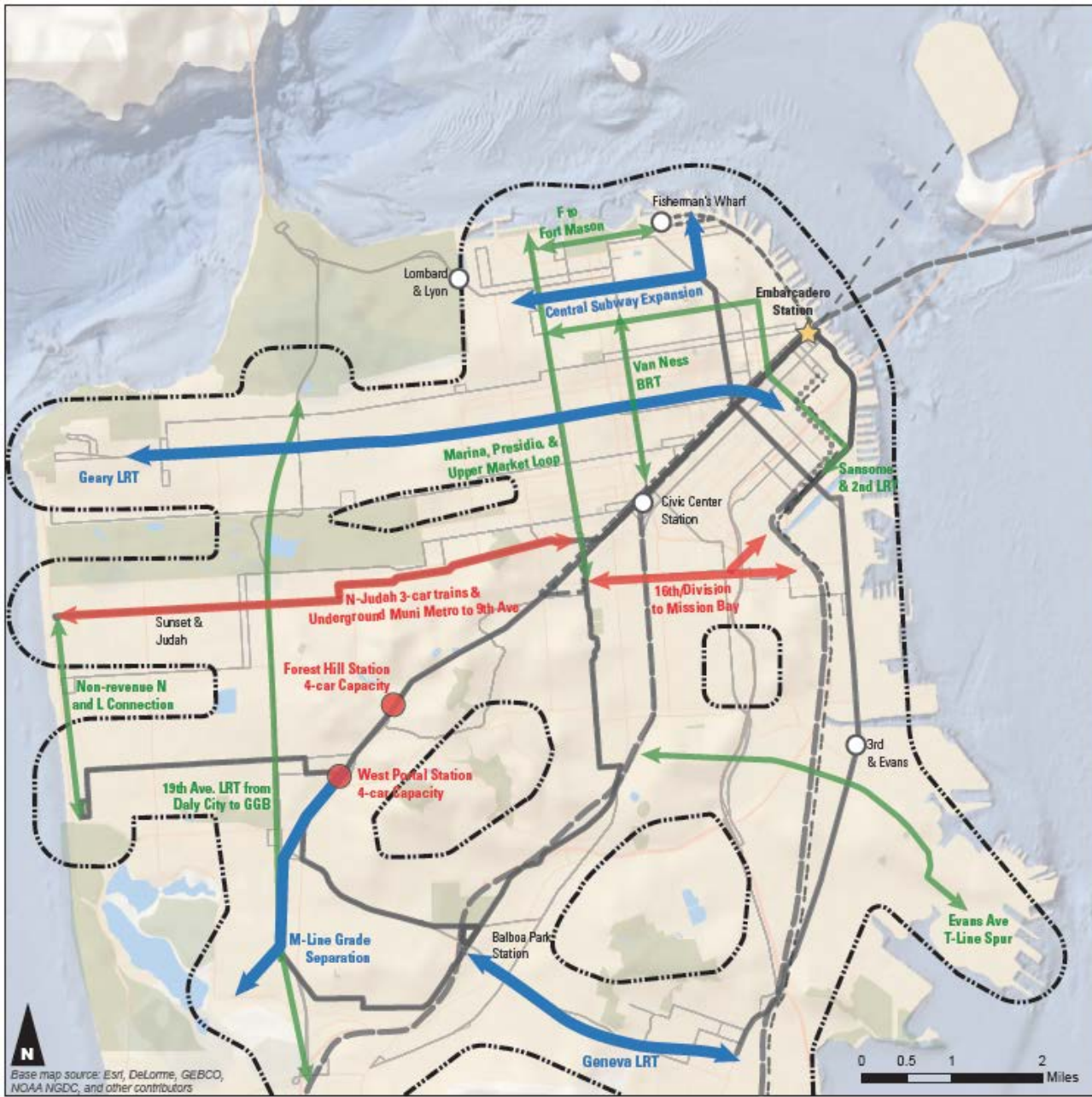


FY 2022-2026



FY 2017-2021

Long-Term Investments



Tier 1



Tier 2

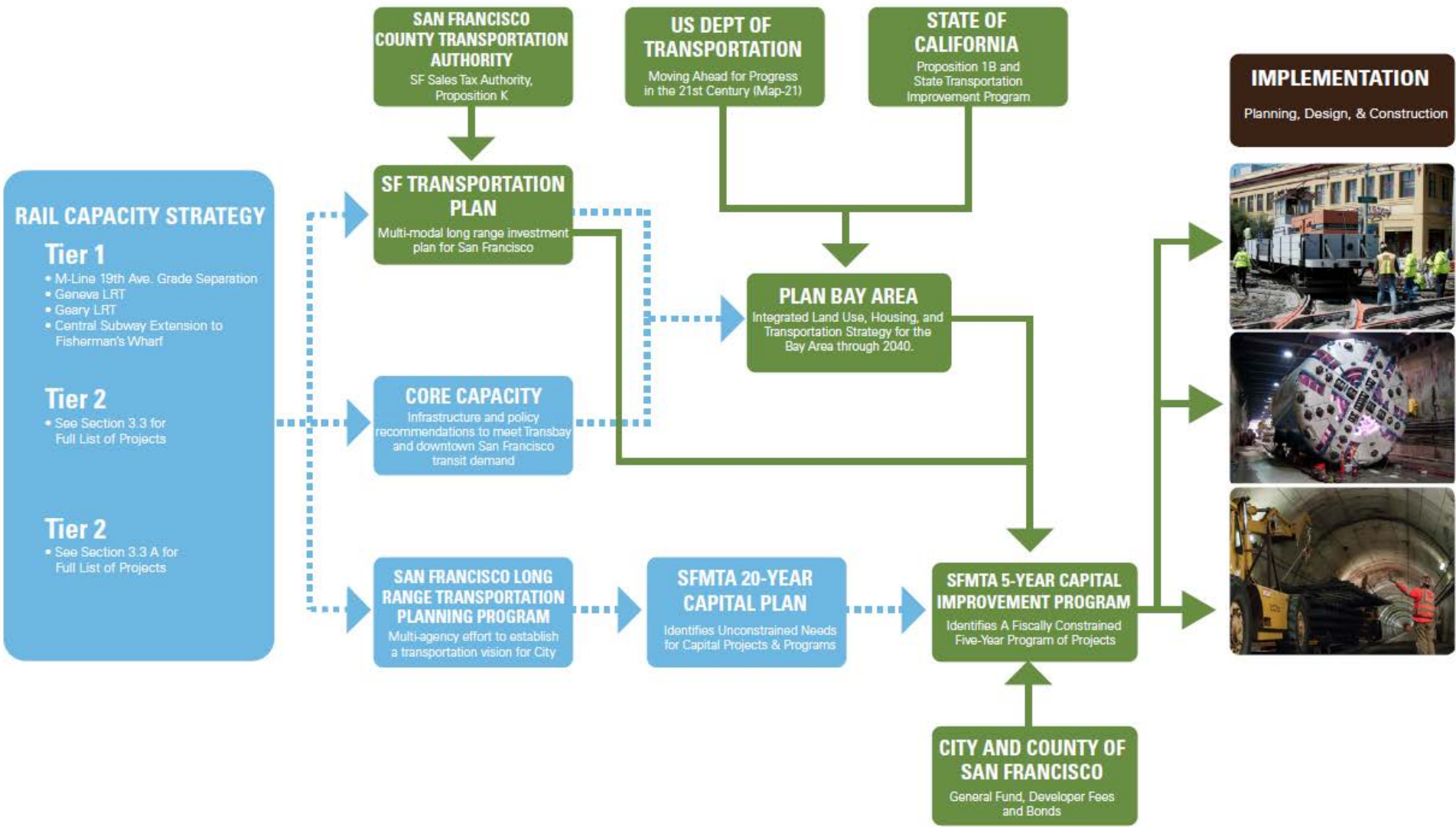


Tier 3



Current and Planned Transit System

- Muni Rapid Bus Network
- Historic Streetcar
- Muni Metro Network
- - - Planned High Speed Rail
- - - Treasure Island Ferry
- Regional Rail (BART/Caltrain)
- ***** Planned Regional Rail



Transbay Corridor Demand and Capacity

Prerequisite Projects By Operator

Transbay Corridor

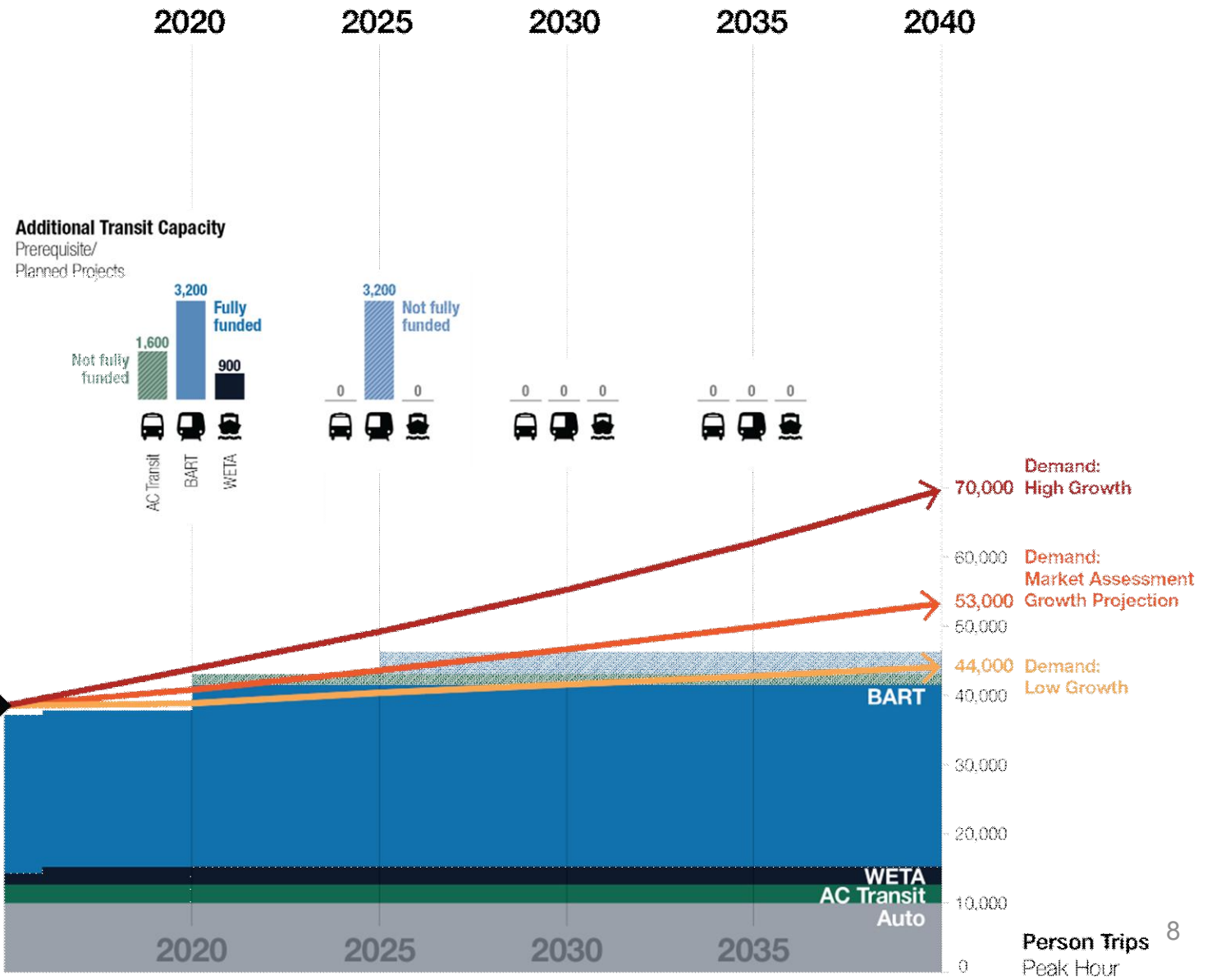
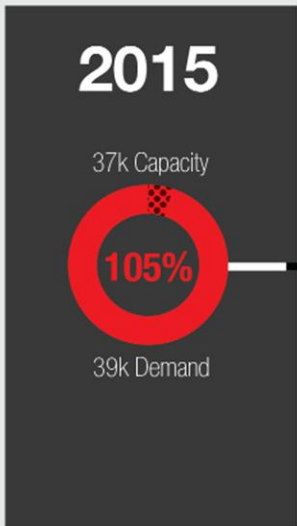
Existing Conditions

Westbound to SF Core
AM Peak Hour

10,000 People in Cars

29,000 Transit Trips

- 2,700 AC Transit & WestCAT bus
- 25,000 BART
- 1,300 WETA ferry



Transbay Corridor Demand Forecast

Transbay Corridor

Existing Conditions
Westbound to SF Core
AM Peak Hour

10,000 People in Cars

29,000 Transit Trips

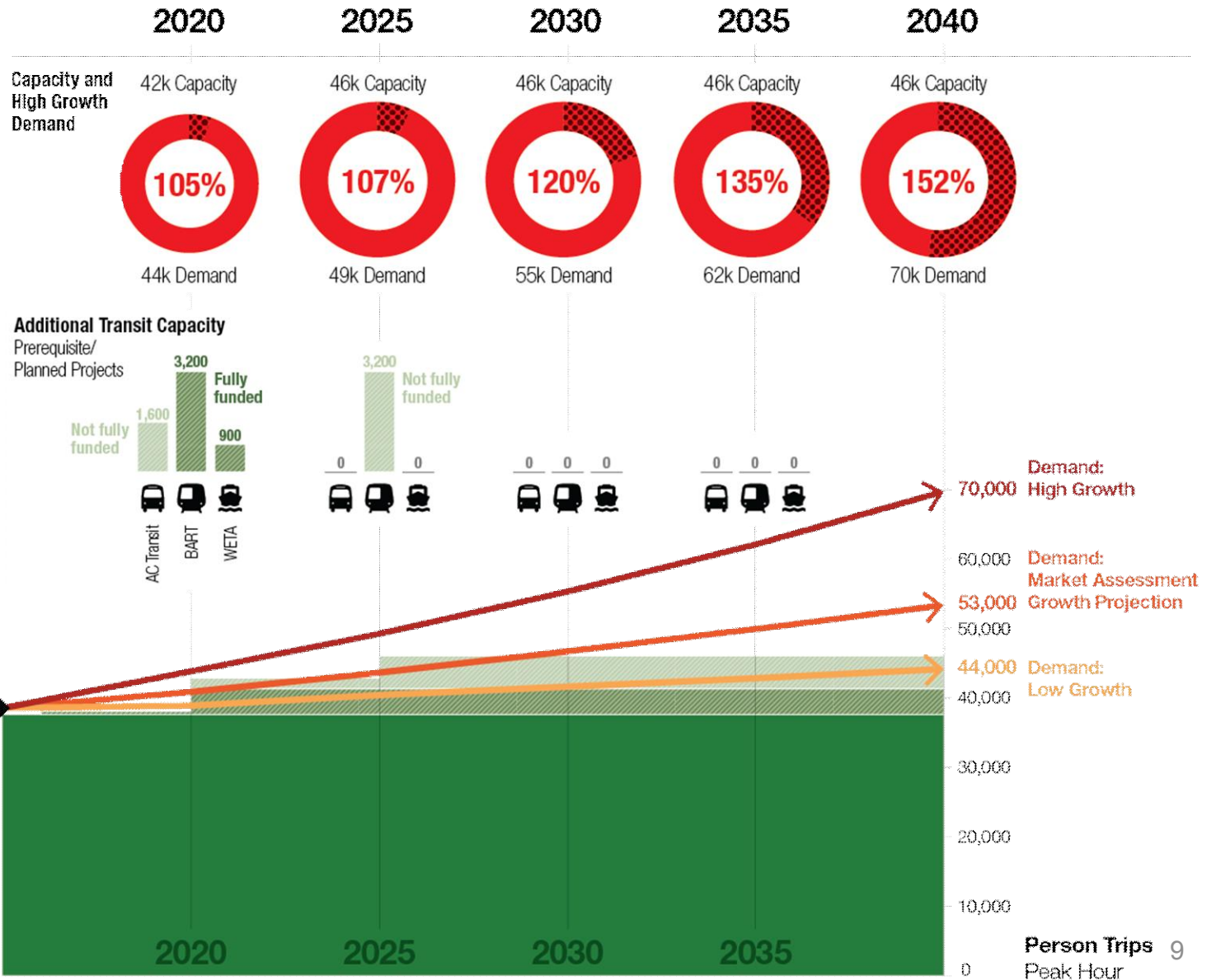
- 2,700 AC Transit & WestCAT bus
- 25,000 BART
- 1,300 WETA ferry

2015

37k Capacity

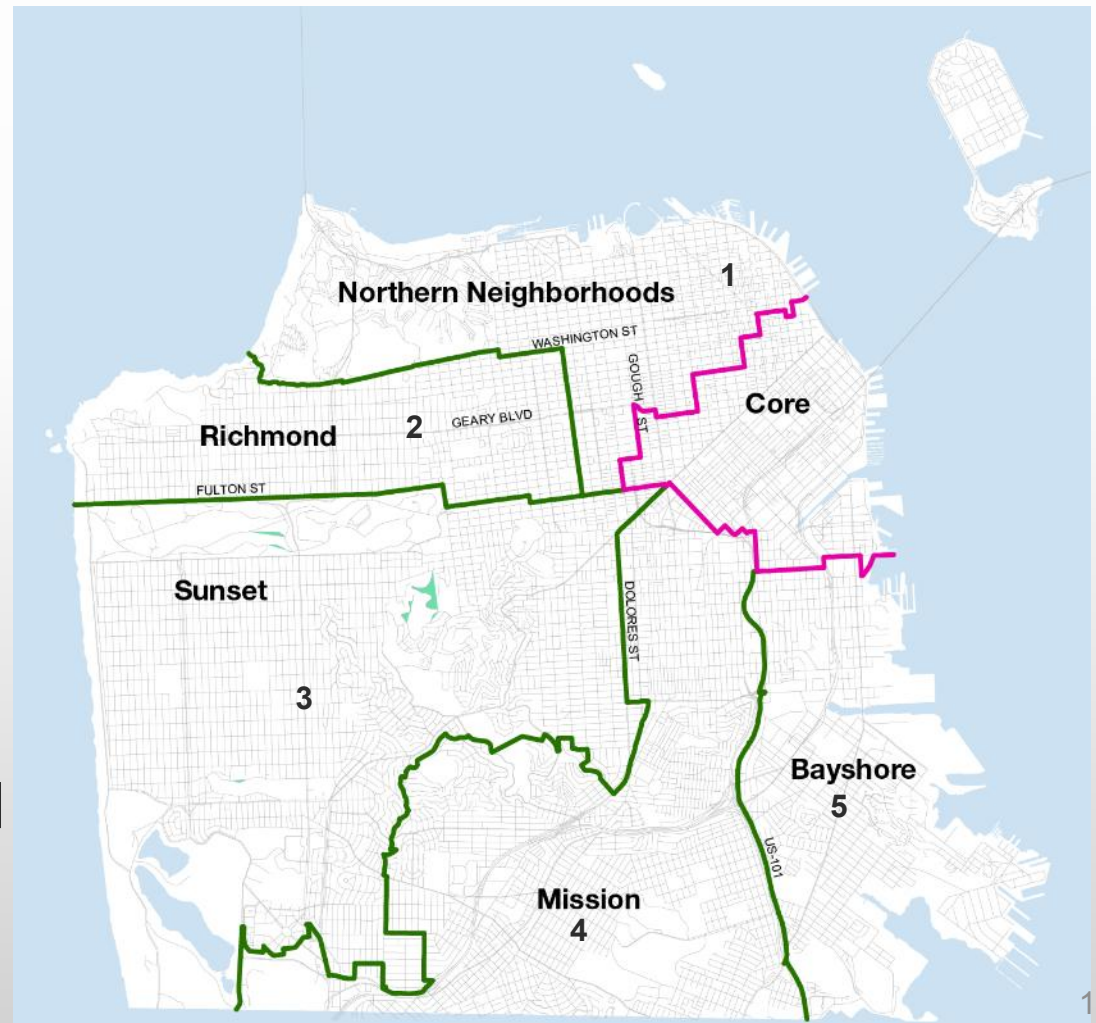


39k Demand



SF Metro Corridor Future Growth

- Similar analysis to Transbay, but capacity/demand assessed in 6 sub-areas
- Richmond & Sunset corridors show projected demand above planned capacity
- Other corridors show future planned capacity above projected demand



Sunset Sub-area Demand Forecast

Sunset Corridor



Existing Conditions

Inbound to SF Core
AM Peak Hour

4,550 People in Cars

8,050 Transit Trips

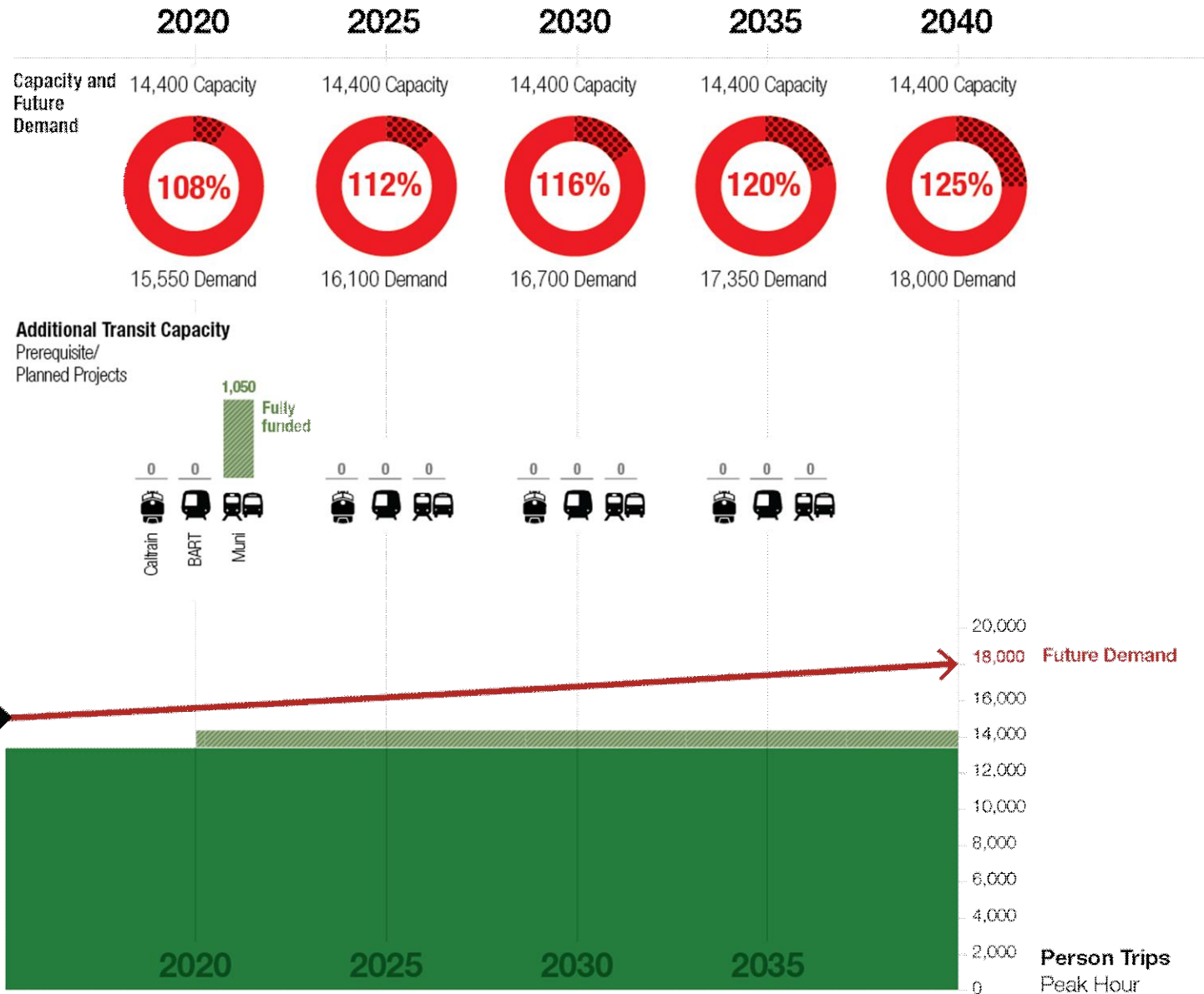
750 Bike/Ped

2015

13,350 Capacity



14,950 Demand



Richmond Sub-area Demand Forecast

Richmond Corridor



Existing Conditions

Inbound to SF Core
AM Peak Hour

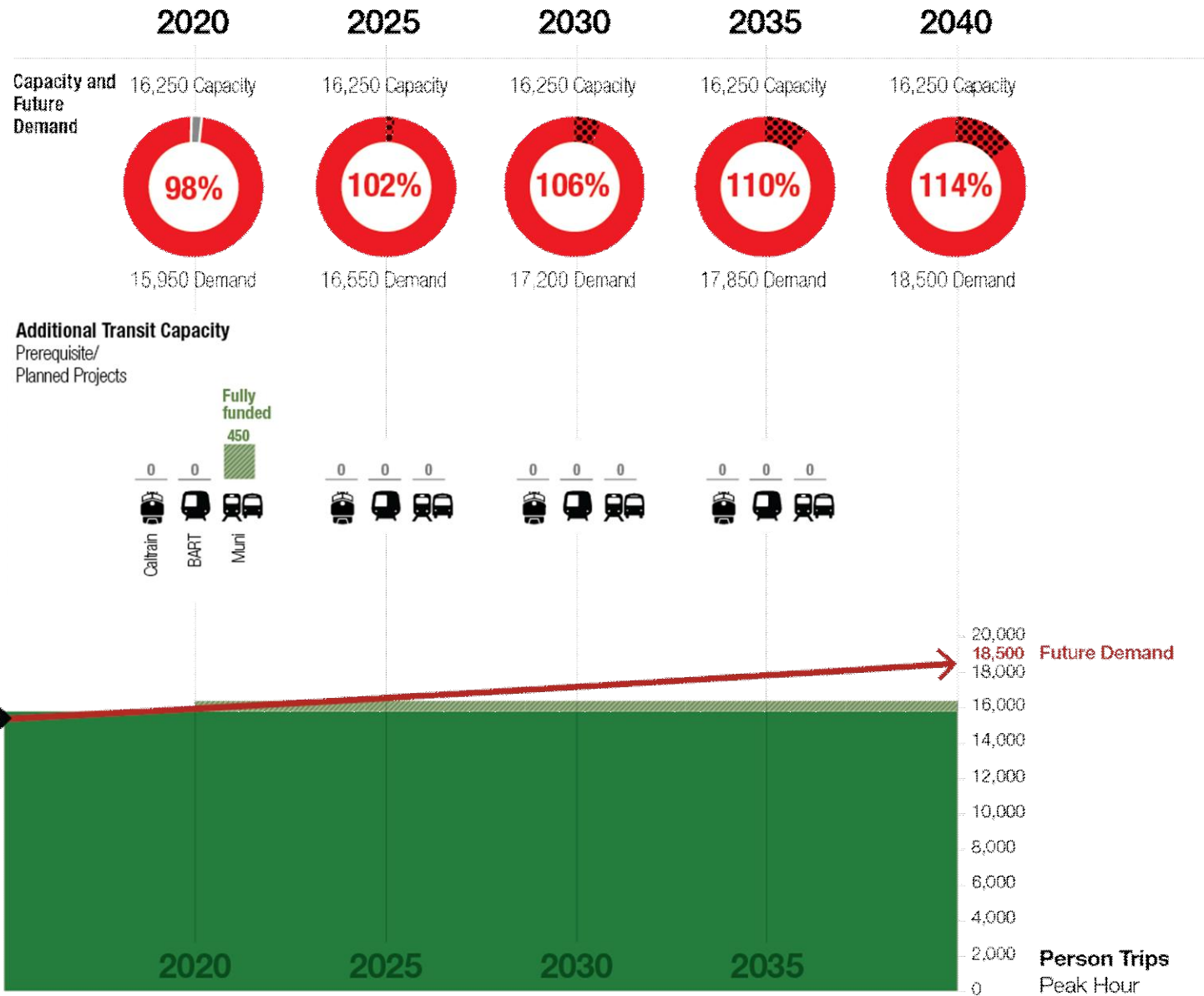
- 4,400 People in Cars
- 6,000 Transit Trips
- 5,400 Bike/Ped

2015

15,800 Capacity



15,350 Demand



Short and Medium Term Packages

SF Metro Packages (short & medium term)

PREREQUISITE PROJECTS

[PLUS]

Projects Common to all Packages

- Solution at Forest Hill and West Portal to enable four-car trains in tunnel
- Geary BRT
- Add and optimize 4-car turn-around capacity at Embarcadero
- SF Better Market Street
- Infrastructure support for service/capacity increases
- System flexibility (e.g. new and enhanced turn-backs)

SF Metro Packages (short & medium term)

PREREQUISITE PROJECTS

PROJECTS COMMON TO ALL PACKAGES

[PLUS]

Package Themes

1a

Longer trains through surface improvements

1b

Longer trains through coupling

2a

Simplified Metro Network

Specific projects pending further definition, feasibility screening, tradeoffs analysis, internal and external stakeholder vetting

Project Schedule

2016

2017

Apr

May

Jun

Jul

Aug

Sept

Oct

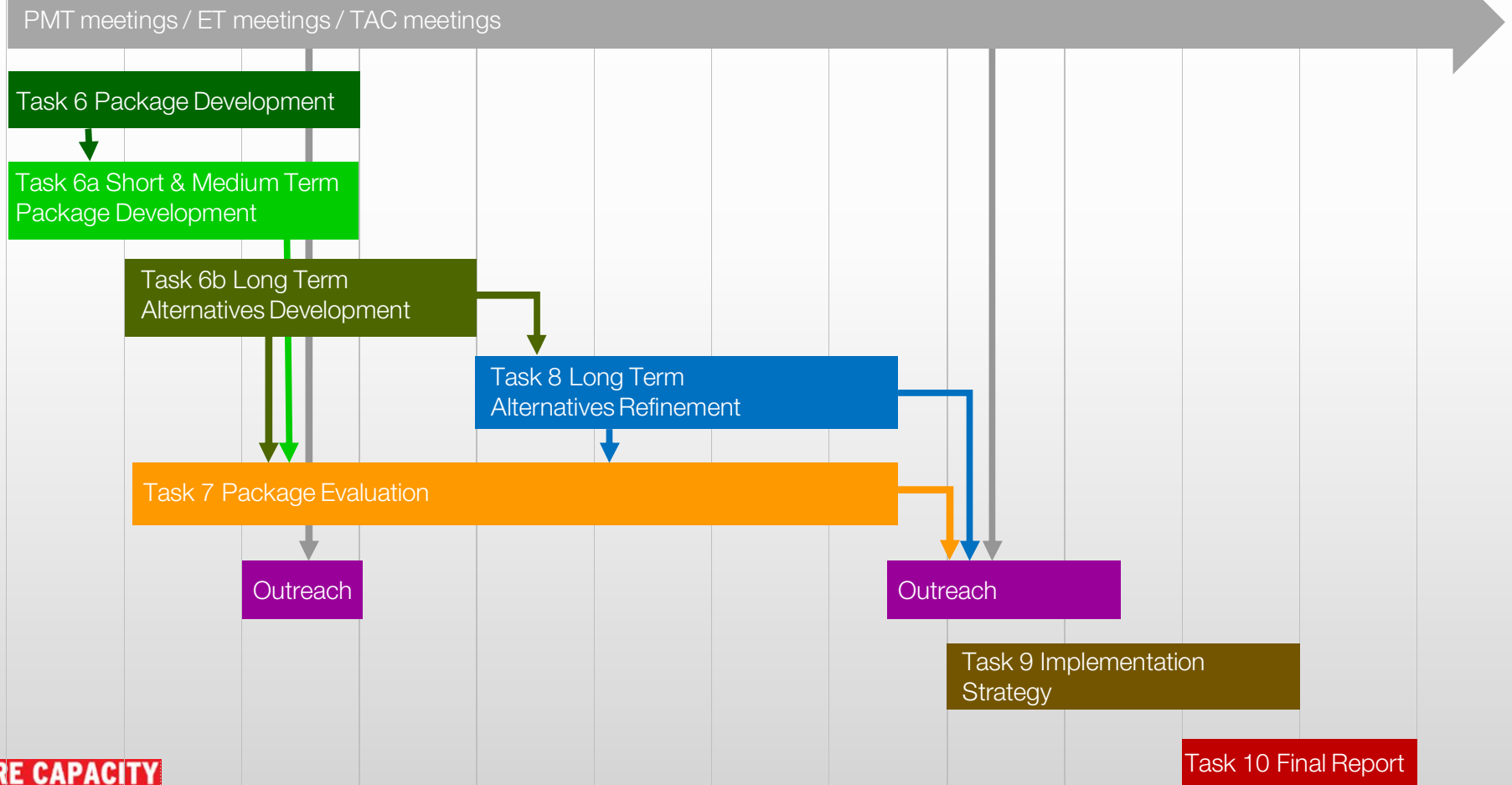
Nov

Dec

Jan

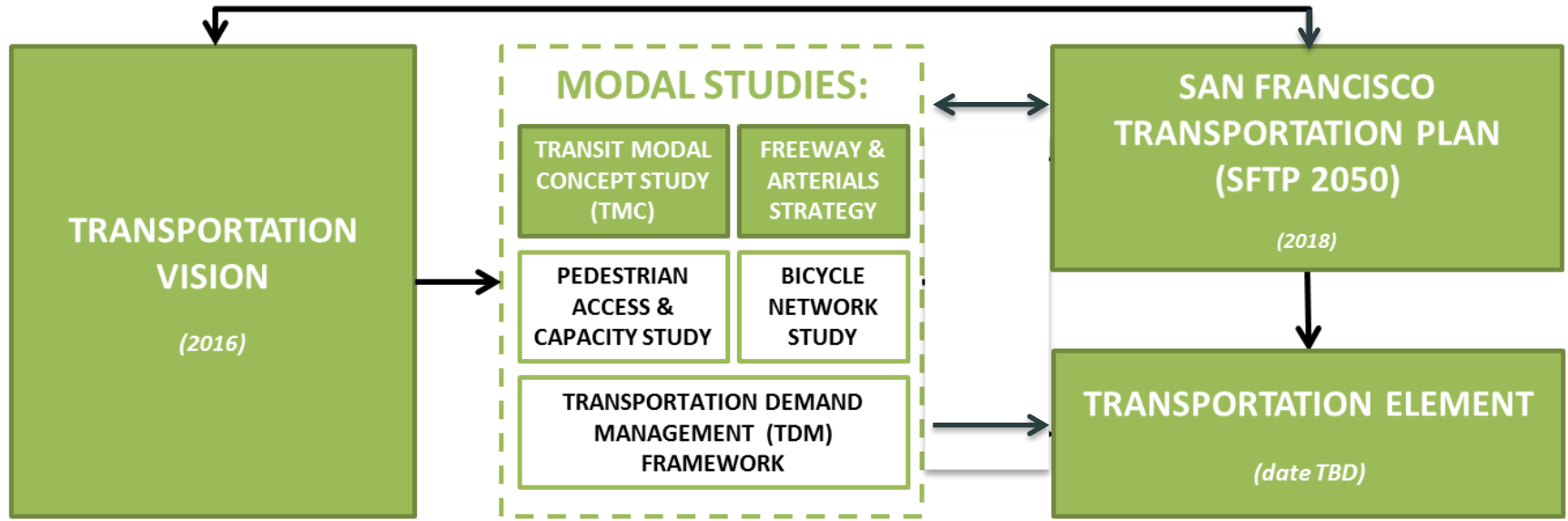
Feb

Mar



SF Long Range Transportation Planning Program

PAST INITIATIVES > RECENT TRENDS > UPCOMING EFFORT



Stakeholder Involvement



SAN FRANCISCO
PLANNING DEPARTMENT



SFMTA
Municipal
Transportation
Agency

- Outreach
- Goals & Objectives – Key Questions
- Research & Best Practices



Grahm Satterwhite
Principal Transportation Planner
Grahm.Satterwhite@sfmta.com