



**SFMTA**  
Municipal  
Transportation  
Agency

# Revised Commuter Shuttle Program

SFMTA Board of Directors  
March 1, 2016

# Commuter Shuttle Program

- This Board approved the Commuter Shuttle Program on November 17, 2015
- The Program improved on the Pilot in the following ways:
  - Large buses restricted to arterial streets
  - Newer, cleaner fleet
  - More enforcement
  - Safety improvements
  - Better data and analysis

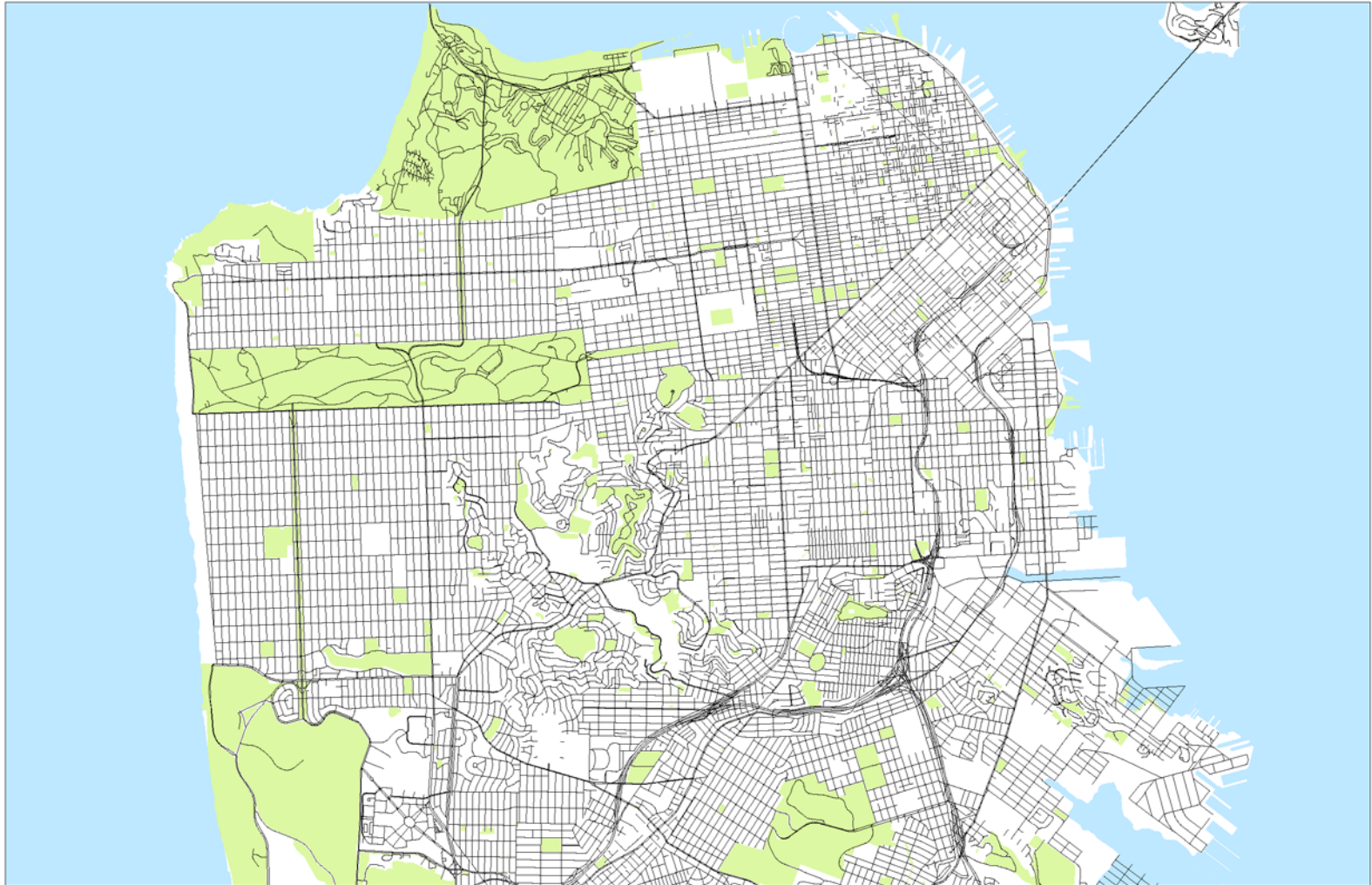
# Program a Model for Regulation

- SF is ground zero for regional commuter shuttles
- Limited authority to regulate and charge
- Innovative solution allows us to create tremendous change in how shuttles operate in SF
- Provides a model for other cities and for other similar forms of transportation

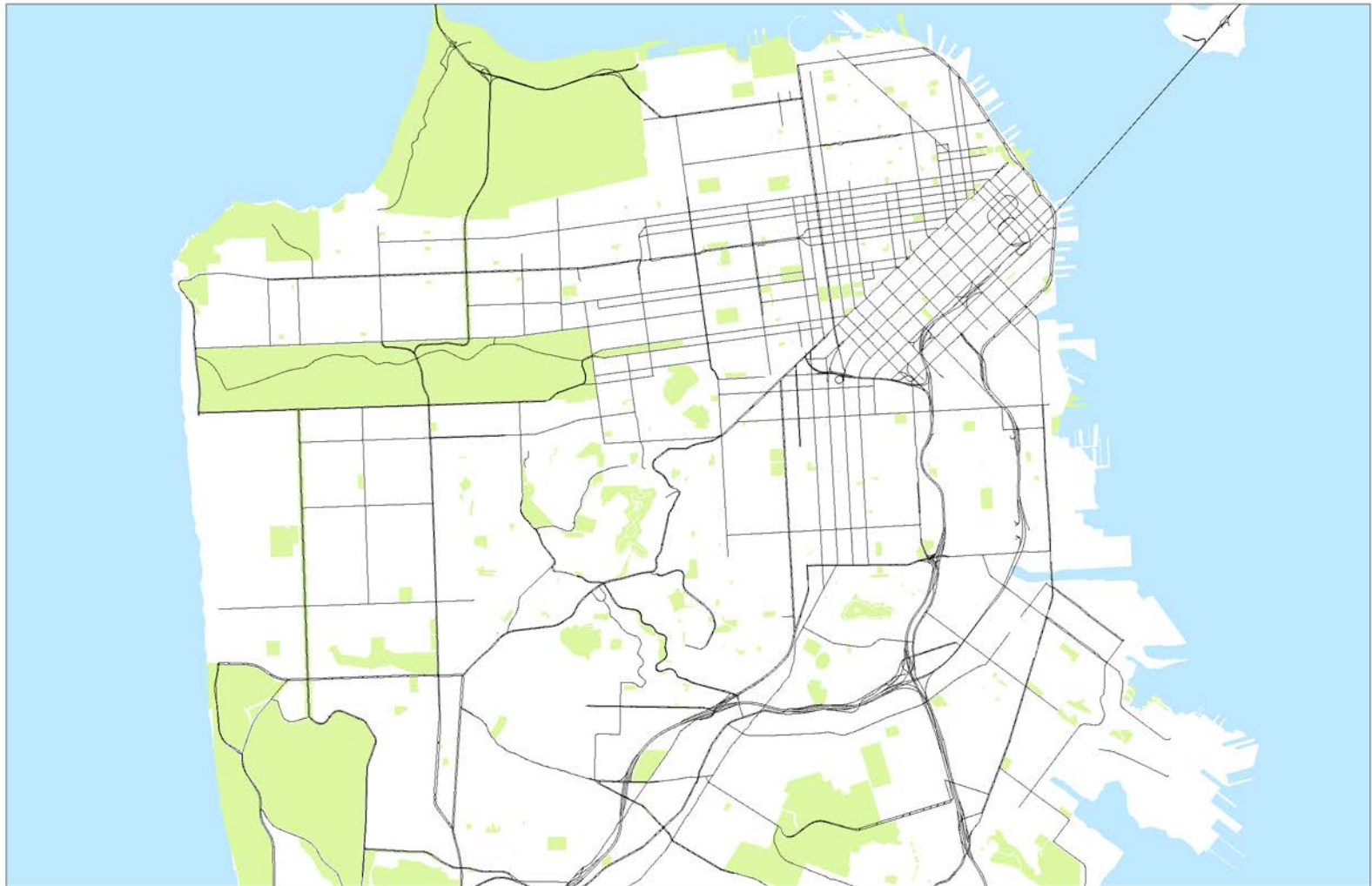
# Program Achievements/Benefits

- Restricted large buses to arterial streets
- Focused loading: fewer locations, fewer impacts
- Newer, cleaner shuttle fleet
- Extensive data collection
- More visible decals and information on shuttles
- Dedicated enforcement team
- Safety improvements
- Labor Harmony
- Increased fees collected to fund the Program

# Program Achievements/Benefits



# Program Achievements/Benefits



# Program Achievements/Benefits

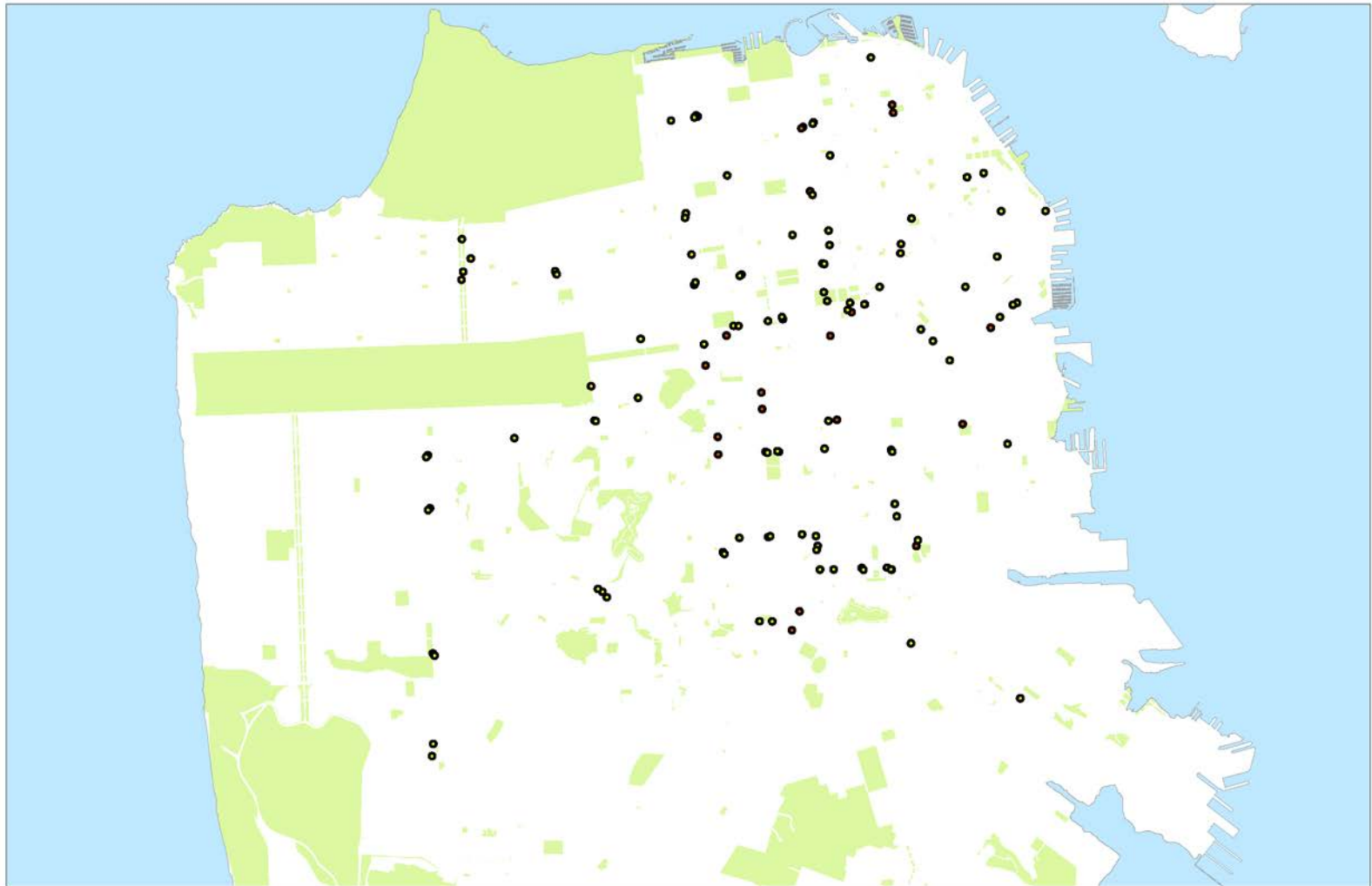
- Restricted large buses to arterial streets
- **Focused loading: fewer locations, fewer impacts**
- Newer, cleaner shuttle fleet
- Extensive data collection
- More visible decals and information on shuttles
- Dedicated enforcement team
- Safety improvements
- Labor Harmony
- Increased fees collected to fund the Program

# Program Achievements/Benefits





# Program Achievements/Benefits



# Program Achievements/Benefits

- Restricted large buses to arterial streets
- Focused loading: fewer locations, fewer impacts
- **Newer, cleaner shuttle fleet**
- Extensive data collection
- More visible decals and information on shuttles
- Dedicated enforcement team
- Safety improvements
- Labor Harmony
- Increased fees collected to fund the Program

# Program Achievements/Benefits



# Program Achievements/Benefits

- Restricted large buses to arterial streets
- Focused loading: fewer locations, fewer impacts
- Newer, cleaner shuttle fleet
- **Extensive data collection**
- More visible decals and information on shuttles
- Dedicated enforcement team
- Safety improvements
- Labor Harmony
- Increased fees collected to fund the Program

# Program Achievements/Benefits





# Program Achievements/Benefits

- Restricted large buses to arterial streets
- Focused loading: fewer locations, fewer impacts
- Newer, cleaner shuttle fleet
- Extensive data collection
- **More visible decals and information on shuttles**
- Dedicated enforcement team
- Safety improvements
- Labor Harmony
- Increased fees collected to fund the Program

# Program Achievements/Benefits

**COMMUTER SHUTTLE PERMIT**

**88-8888**

**2016**

**311**



**SFMTA**  
Municipal  
Transportation  
Agency

**HOW AM I DRIVING?**  
**1-800-000-0000** <sup>Vehicle ID</sup>  
**00000**



# Program Achievements/Benefits

- Restricted large buses to arterial streets
- Focused loading: fewer locations, fewer impacts
- Newer, cleaner shuttle fleet
- Extensive data collection
- More visible decals and information on shuttles
- **Dedicated enforcement team**
- Safety improvements
- Labor Harmony
- Increased fees collected to fund the Program

# Program Achievements/Benefits

- Restricted large buses to arterial streets
- Focused loading: fewer locations, fewer impacts
- Newer, cleaner shuttle fleet
- Extensive data collection
- More visible decals and information on shuttles
- Dedicated enforcement team
- **Safety improvements**
- Labor Harmony
- Increased fees collected to fund the Program

# Program Achievements/Benefits



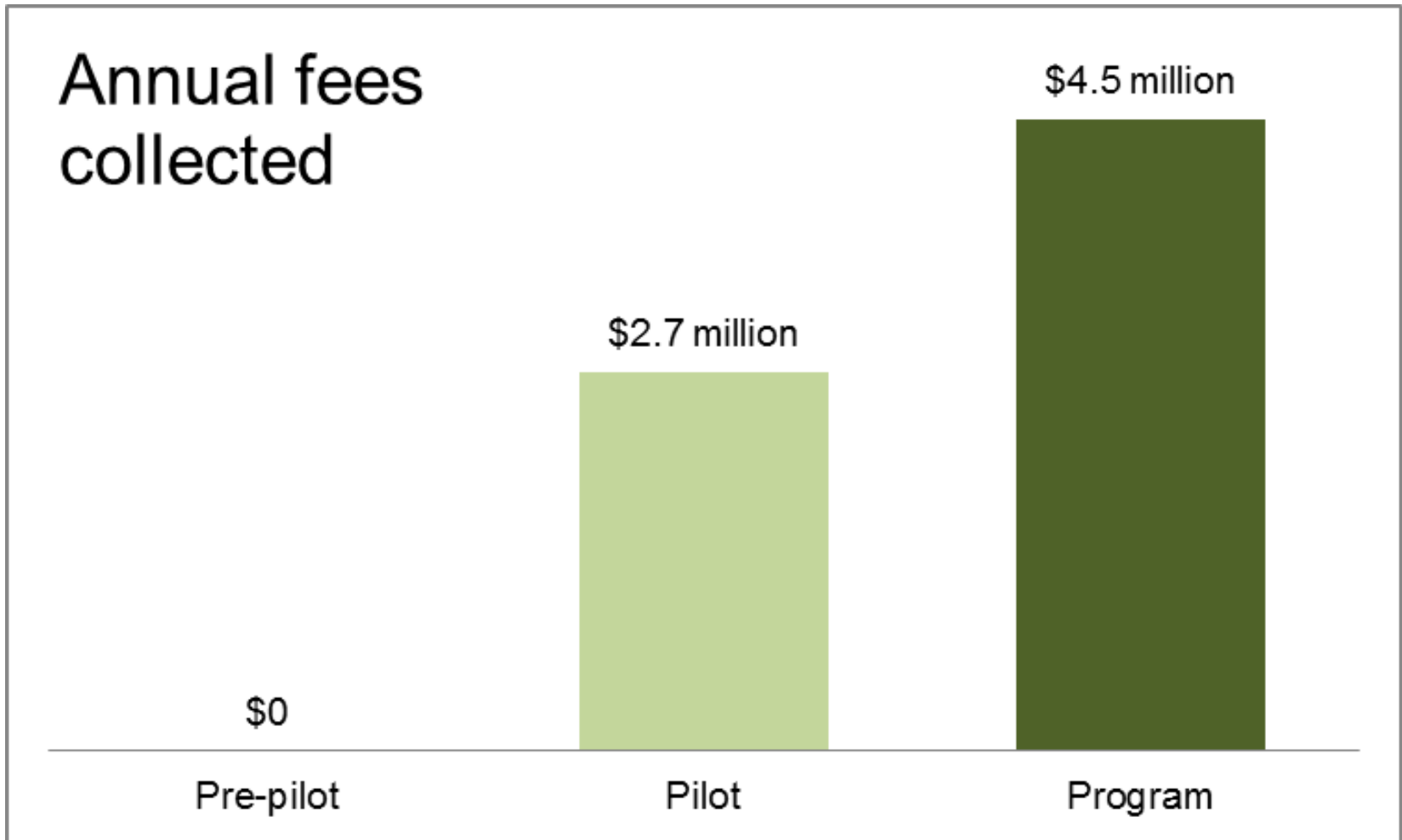
# Program Achievements/Benefits

- Restricted large buses to arterial streets
- Focused loading: fewer locations, fewer impacts
- Newer, cleaner shuttle fleet
- Extensive data collection
- More visible decals and information on shuttles
- Dedicated enforcement team
- Safety improvements
- **Labor Harmony**
- Increased fees collected to fund the Program

# Program Achievements/Benefits

- Restricted large buses to arterial streets
- Focused loading: fewer locations, fewer impacts
- Newer, cleaner shuttle fleet
- Extensive data collection
- More visible decals and information on shuttles
- Dedicated enforcement team
- Safety improvements
- Labor Harmony
- **Increased fees collected to fund the Program**

# Program Achievements/Benefits



# Revisions/Additions to the Program

- BOS negotiated changes
- On February 16, MTAB passed resolution asking for revisions/additions:
  - Study of hubs or other network system
  - Study of housing displacement
  - Monitoring of impacts at specific loading zones
  - 6-month report on progress and issues
  - Time-limited, with opportunity after 12 months to improve the program further

# Timeline Moving Forward

- If this Board approves revisions, Program takes effect April 1, 2016
- 6-month report in October 2016
- Conclude hub and housing studies
- Program ends March 31, 2017