



GRANT
O'FARRELL



5
FULTON
Sixth Av.

F MARKET & WHARVES | **CASTRO**



TSP

Transportation Sustainability Program

Photo: Sergio Ruiz



San Francisco is a popular place to work, live and visit, straining the existing transportation network

- Roads and transit vehicles nearing capacity in some areas
- Lifestyle preferences and new infrastructure have contributed to increases in cycling and walking, even in less-than-ideal conditions

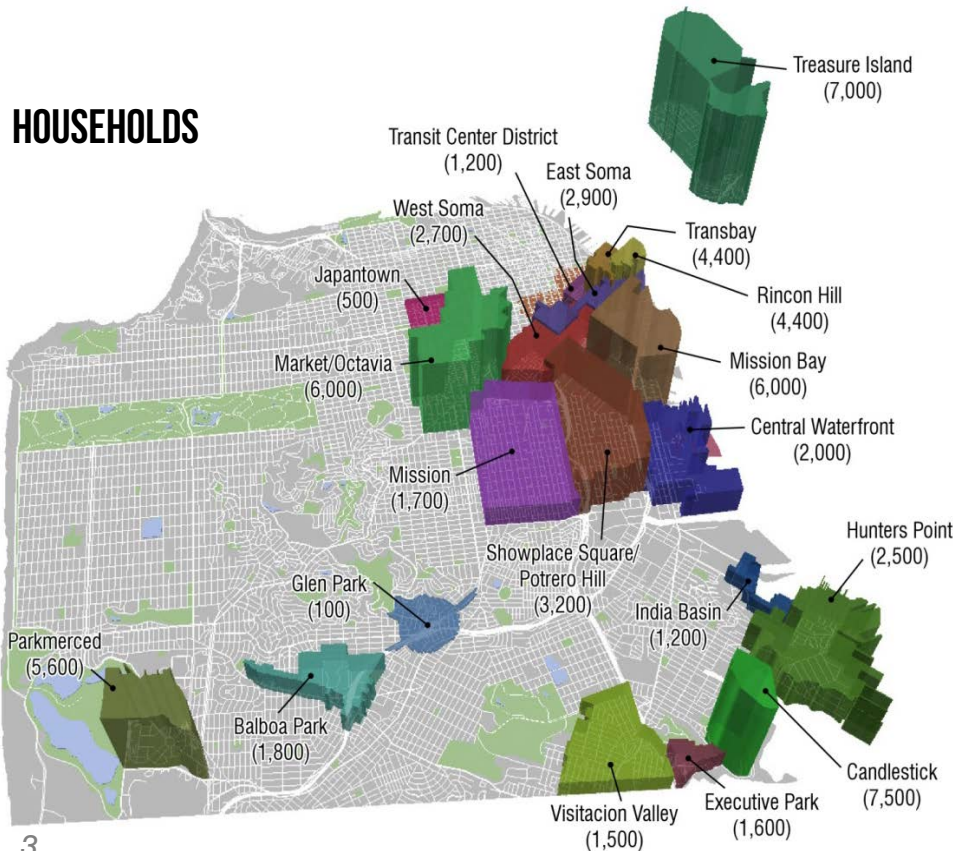


HOW DO WE GROW SUSTAINABLY?

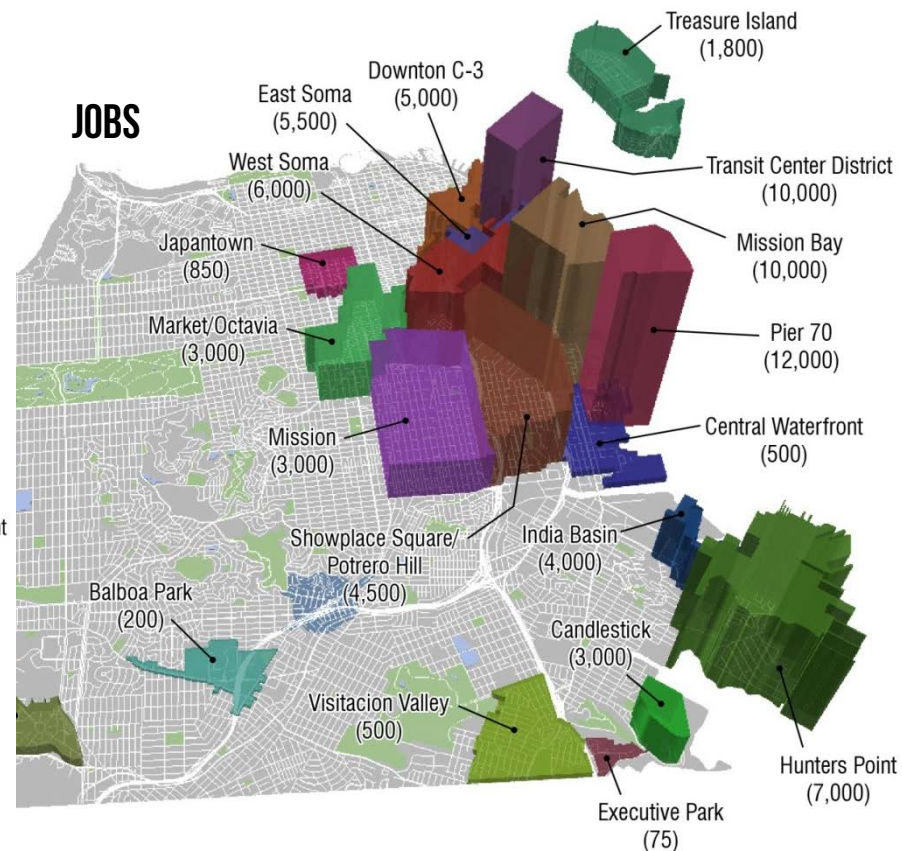
By 2040: **100,000+** new households
190,000+ new jobs

40% of housing projections already in pipeline

HOUSEHOLDS



JOB



WE NEED A COMPREHENSIVE APPROACH TO ADDRESS THESE CHALLENGES...



Public investment for existing and future population underway

- Transit capital and operational investments (Central Subway, Muni Forward, BRT, DTX, etc.)
- Bicycle infrastructure (protected lanes, parking, etc.)
- Pedestrian safety (Vision Zero, Walk First, etc.)
- Demand Management (bike sharing, shuttles, citywide TDM, etc.)

New development contribution

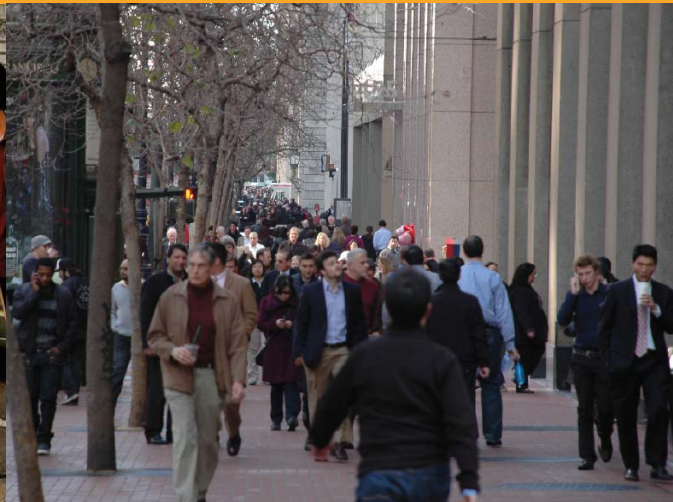
- Transportation Sustainability Program



TRANSPORTATION SUSTAINABILITY PROGRAM



*Keeping people moving
as our city grows*

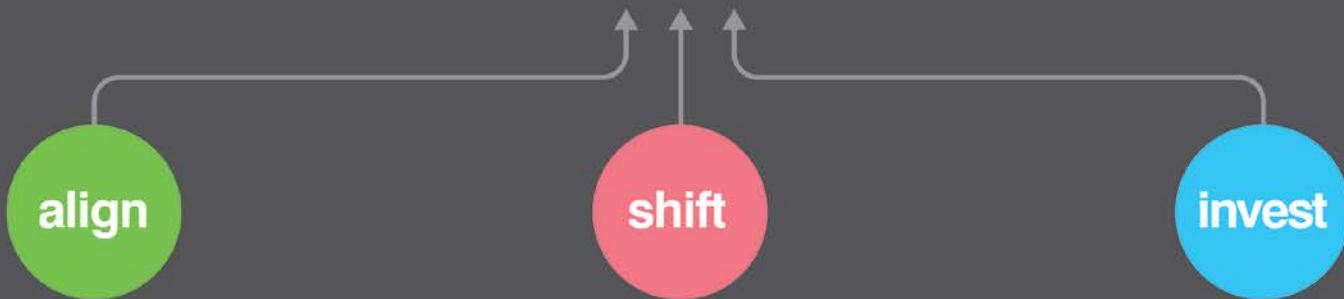


Mark Draper

TRANSPORTATION SUSTAINABILITY PROGRAM



*Keeping people moving
as our city grows*



MODERNIZE ENVIRONMENTAL REVIEW



More meaningful transportation analysis that better captures environmental effects

ENCOURAGE SUSTAINABLE TRAVEL



On-site transportation amenities that reduce reliance on driving

ENHANCE TRANSPORTATION TO SUPPORT GROWTH



Development fee to help fund transit and safer streets

GRANT
O'FARRELL



SAN FRANCISCO



**ENHANCE TRANSPORTATION
TO SUPPORT GROWTH**

F MARKET & WHARVES CASTRO

1061

URGENT FUNDING NEED



EXISTING PLANS/
PROJECTS/POLICIES

Facilities Vision	Bicycle Strategy	SF Area Plans	SF County Transportation Plan
Ped Strategy	Muni Fleet Plan	SF Capital Plan	
MTA Capital Plan	MTA Strategic Plan	Regional Transportation Growth	
ADA Plan	TEP	Neighborhood Transportation Plans	

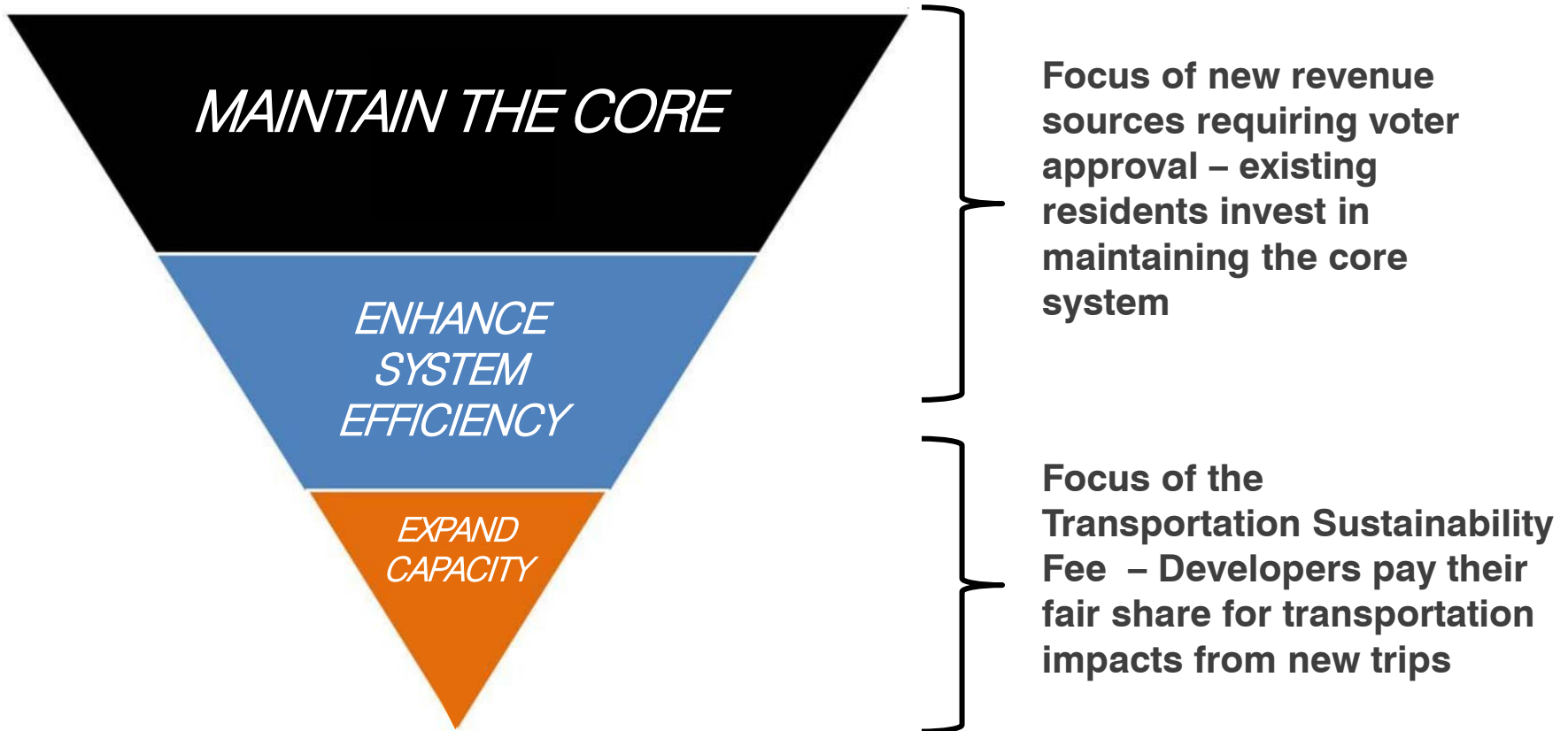
\$10 BILLION TRANSPORTATION FUNDING NEED TO 2030

\$3.7 BILLION IN
EXISTING FUNDING

\$3 BILLION IN TTF FUNDING

\$3.3 BILLION
UNFUNDED

INVESTMENT PRIORITIES



TRANSPORTATION SUSTAINABILITY FEE



- Citywide transportation fee to ensure that new development pays its fair share for impacts on the transit system
- Replaces existing TIDF and expands applicability to include market-rate residential development and major institutions
- Nexus and Feasibility Studies underway

EXPENDITURE PLAN: OUTCOMES



- More Muni buses and trains
- Faster and more reliable local transit
- Roomier and faster regional transit (e.g. BART)
- Safer walking and bicycling

11



GRANT
O'FARRELL



SAN FRANCISCO



align



MODERNIZE ENVIRONMENTAL REVIEW

OUTCOMES OF CEQA REFORM:

Goodbye LOS...Hello VMT!



LAND USE PROJECTS

- More certainty during environmental review
- Reduced time & cost of technical studies



TRANSPORTATION PROJECTS

- Faster delivery of many transportation projects



GRANT
O'FARRELL



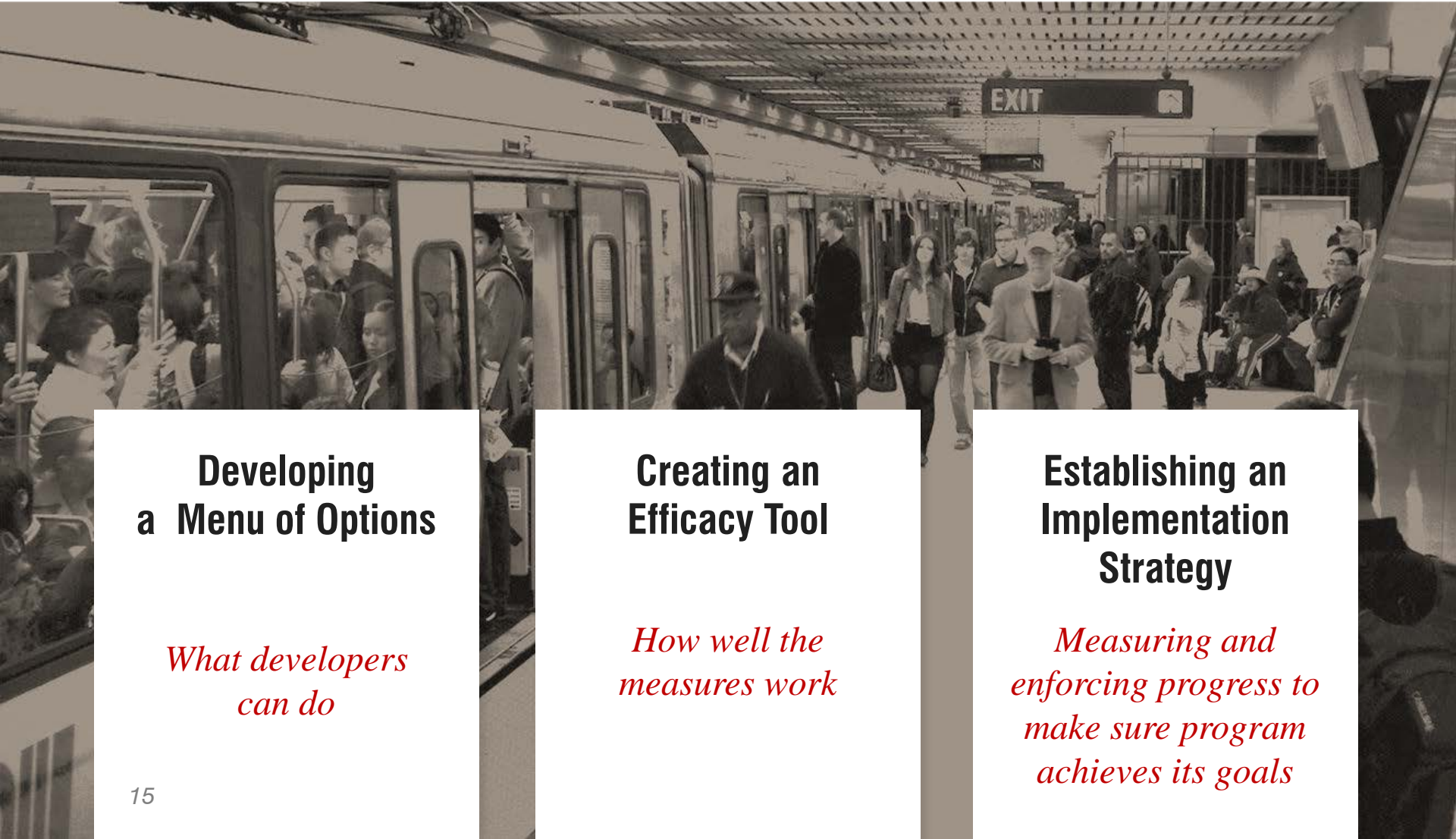
SAN FRANCISCO

shift



ENCOURAGE SUSTAINABLE TRAVEL

TRANSPORTATION DEMAND MANAGEMENT PROGRAM



Developing a Menu of Options

*What developers
can do*

Creating an Efficacy Tool

*How well the
measures work*

Establishing an Implementation Strategy

*Measuring and
enforcing progress to
make sure program
achieves its goals*



TRANSPORTATION DEMAND MANAGEMENT POTENTIAL LEGISLATION

- VMT ratio reduction goal
- Developers select from a menu of TDMs
 - Flexibility
 - Consistency
 - Predictability during the entitlement process
- The City provides technical advisories to guide the TDM selection process
- The City monitors and enforces implementation

NEXT STEPS

An aerial, sepia-toned photograph of San Francisco, California, showing the city skyline, the Golden Gate Bridge, and the bay. The image is used as a background for the slide.

- Finalize the Technical Analysis
- Confirm Policy Approach
- Stakeholder Outreach

TSP TIMELINE

2015

SPRING

SUMMER

FALL

WINTER

Public Outreach

Complete Technical Work



PUBLIC HEARING
*Fee Ordinance
Reintroduced / Adopted*



PUBLIC HEARING
*Sustainable Travel Legislation
Introduced / Adopted*



*State Upgrades
Environmental
Review Standard*

THANK YOU

**TRANSPORTATION
SUSTAINABILITY PROGRAM**



*Keeping people moving
as our city grows*

<http://tsp.sfplanning.org>

