



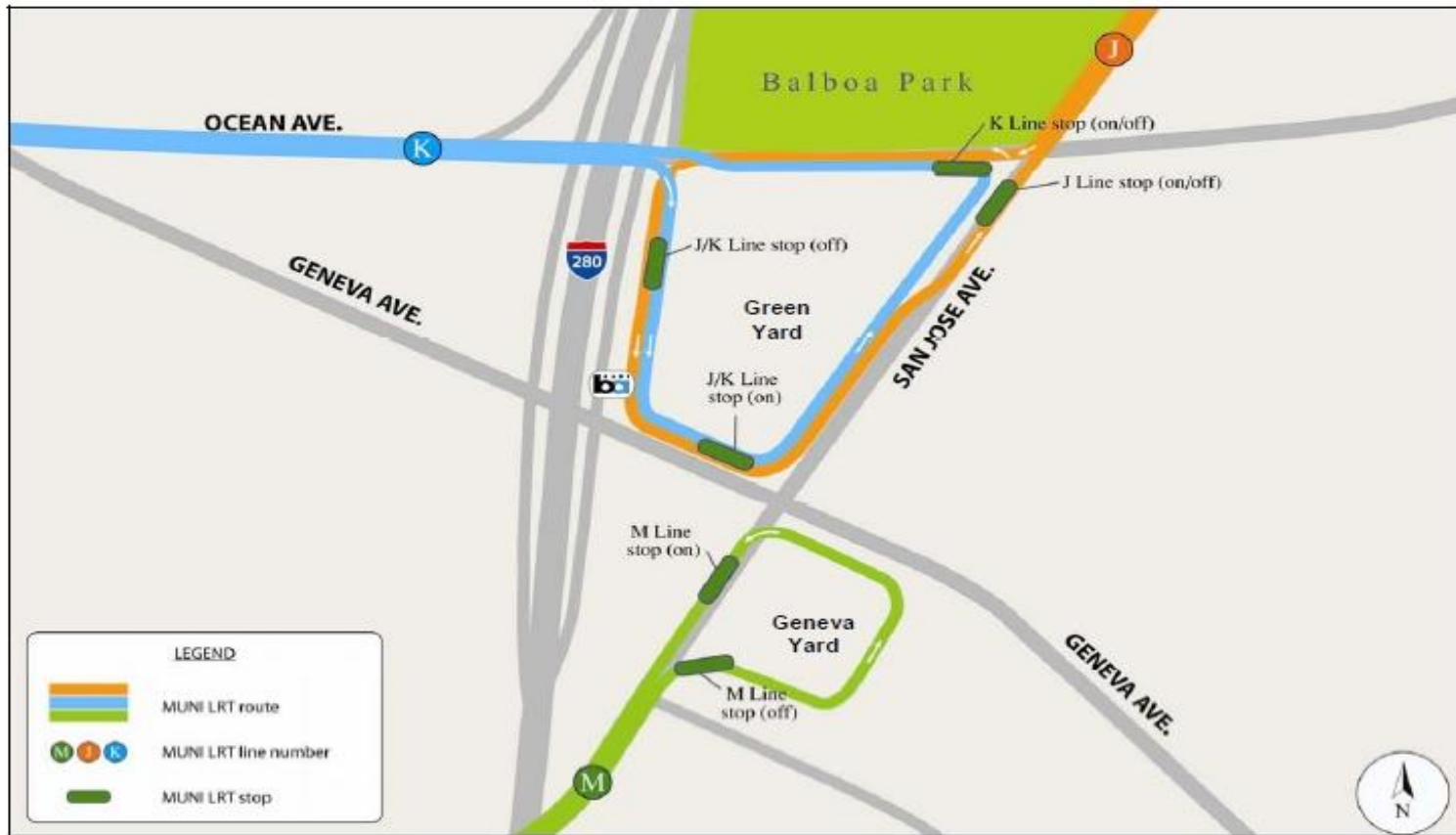
SFMTA
Municipal
Transportation
Agency

GREEN LIGHT RAIL CENTER TRACK REPLACEMENT

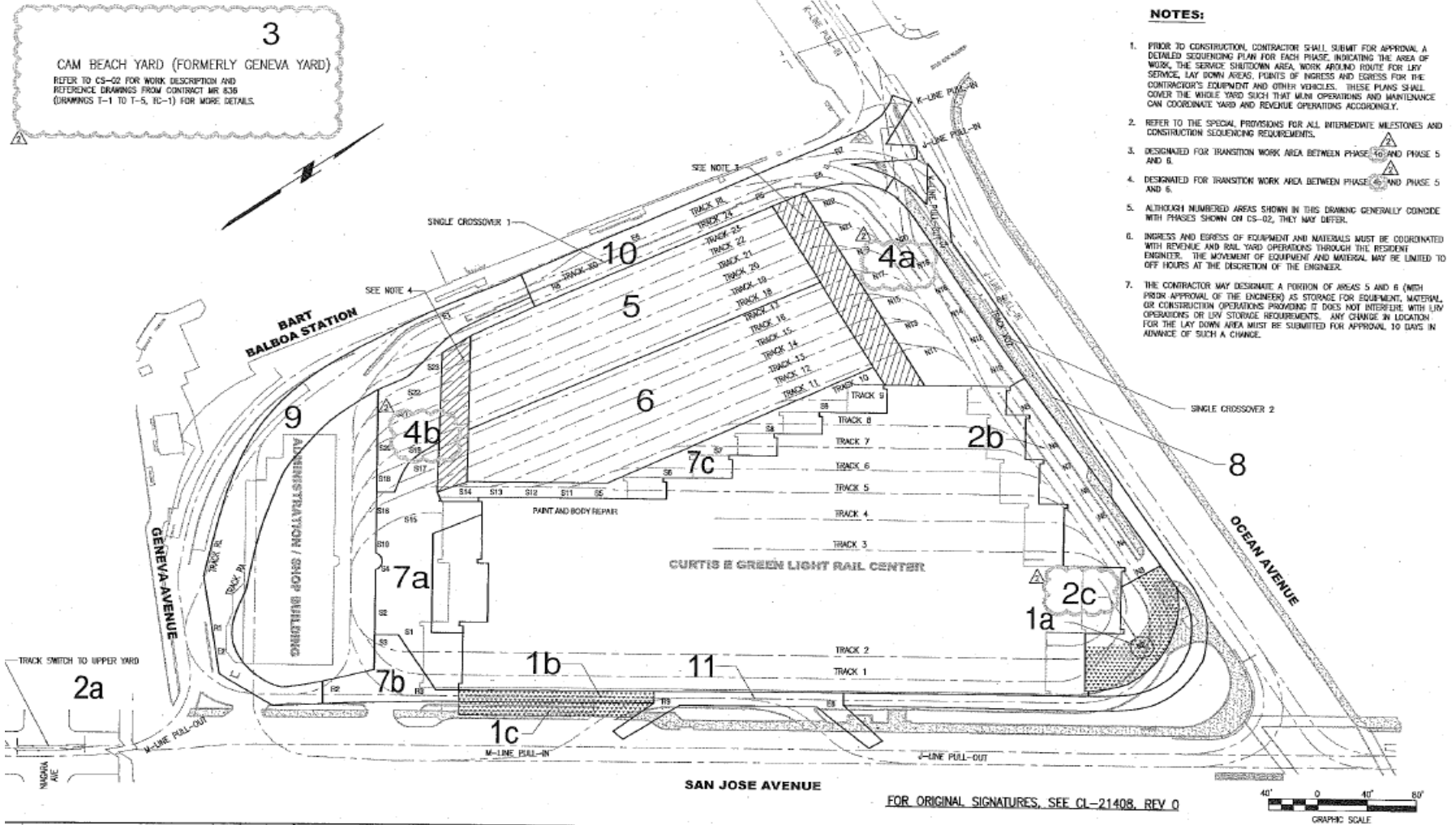
11 | 17 | 2014

SAN FRANCISCO, CALIFORNIA

Transit Boarding Area Circulation



Project Location



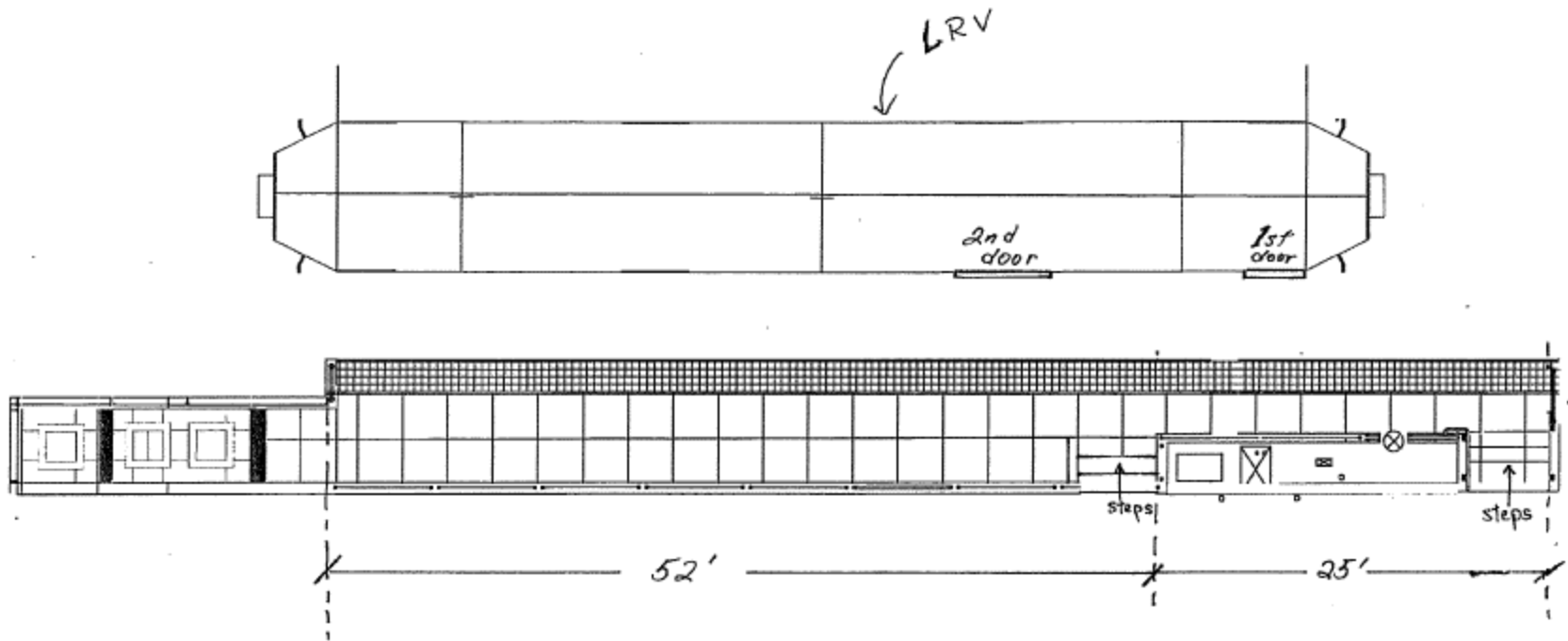
Scope of Work

- Replace worn tracks and switches at the north and south ladder tracks and some revenue tracks near the Facility
- Modifications to the overhead contact systems and track switch control system
- Repair and improve the Facility's storm water drainage system
- Provide new pavement for the Yard
- Improvements in the Cameron Beach Yard for temporary storage of the Light Rail Vehicles during construction inside Green Yard
- Construct a new key stop with accessible path of travel, curb ramps, and boarding island along San Jose Avenue

Contract Strategy

- Two Phase Notice to Proceed (NTP)
- NTP for Phase I was issued on January 15, 2013
 - Work includes:
 - Construction of the new Muni Metro key stop on San Jose Avenue and the associated ADA work
 - Trackwork at the northeast side of the maintenance building & modifications at the Cameron Beach Yard to accommodate storage of the Light Rail Vehicles during construction in the Green Yard
- NTP for Phase II will be issued at the beginning of the 4th year during construction

Muni Metro Key Stop on San Jose Avenue



Balboa Park Station Westside Connection – Phase 1

Balboa Park Station and Transfer Hub



Balboa Park Station Eastside Connection – Phase 2

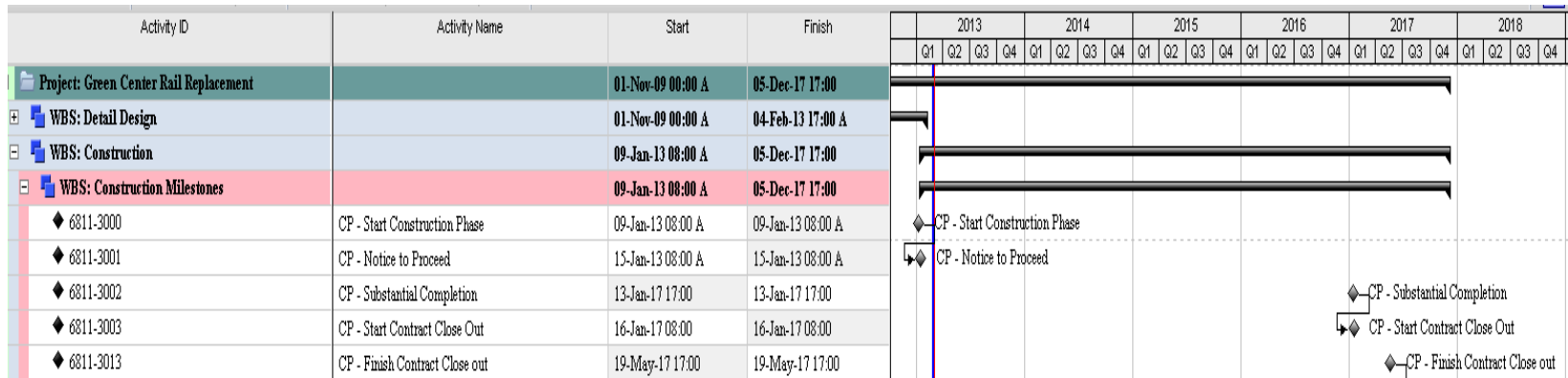
East Walkway towards Ocean Ave



Balboa Park Station Eastside Connection – Phase 2



Project Schedule & Timeline



Project Budget Overview

Phase	Budget
Conceptual Engineering	\$2,463,000
Detailed Design	\$3,882,000
Construction	\$40,270,000
Total Project Budget	\$46,615,000