



**SFMTA**  
Municipal  
Transportation  
Agency

# **Irving Street Streetscape Project Survey Results**

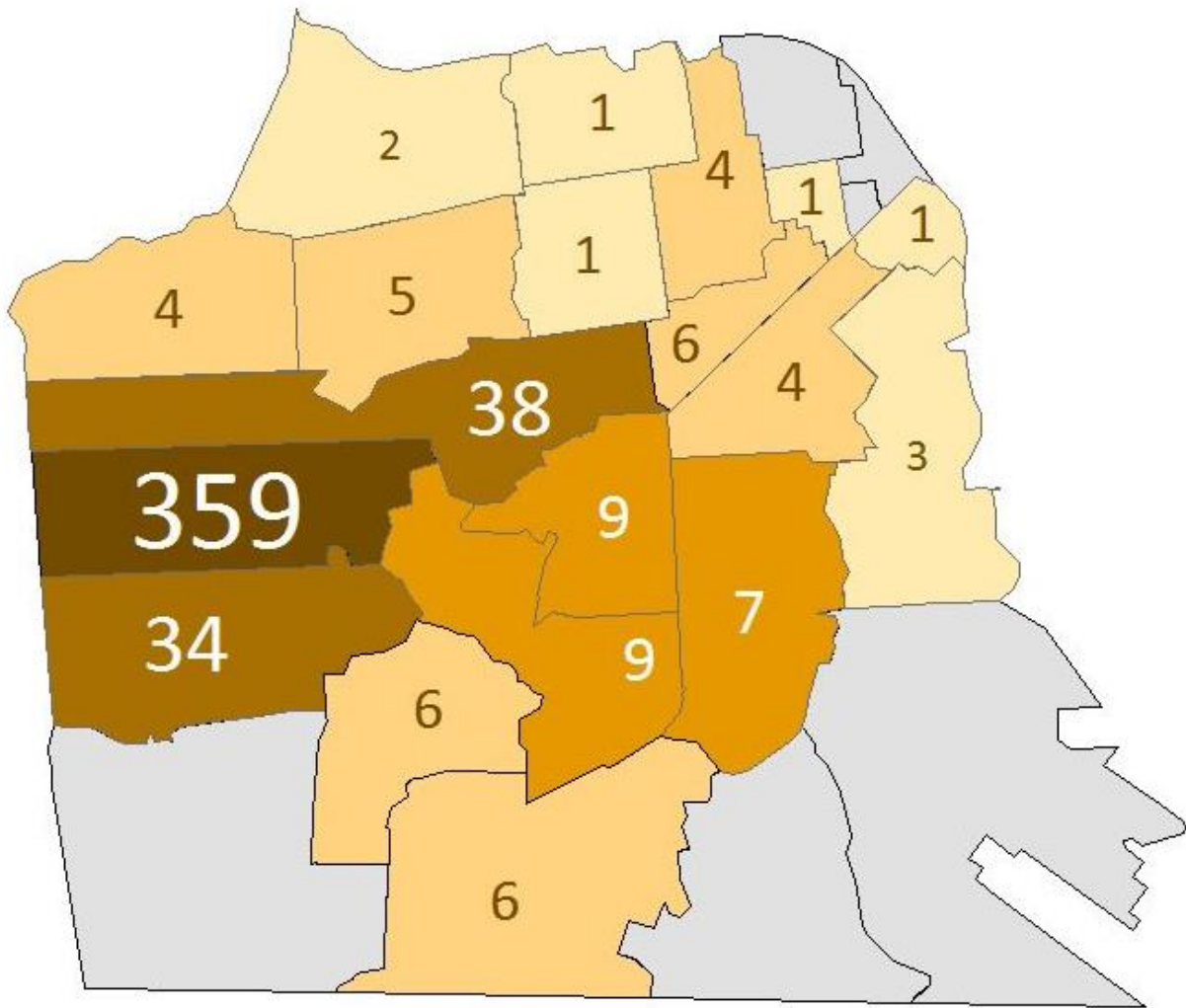
March 6, 2014

## Introduction

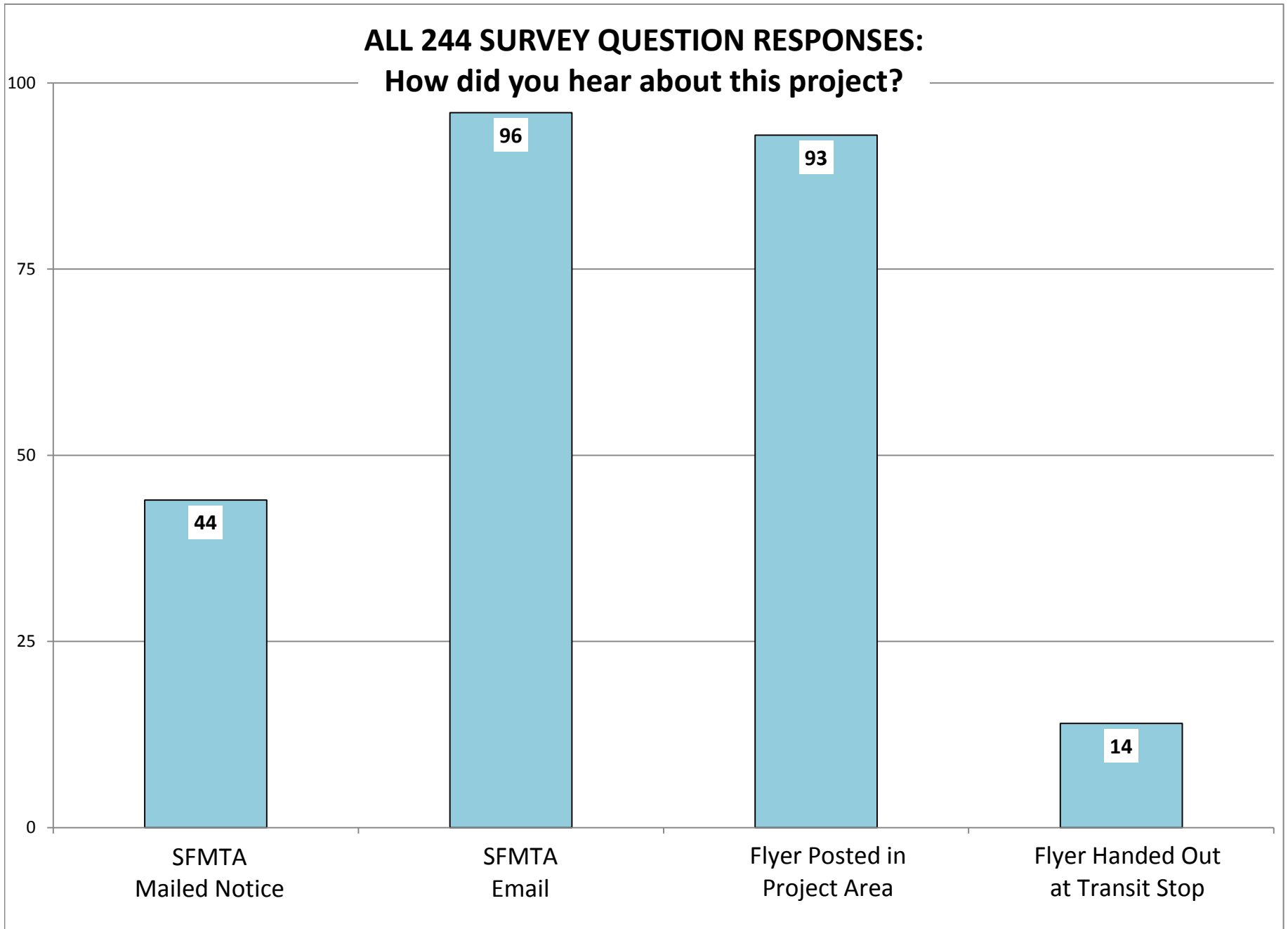
The San Francisco Municipal Transportation Agency (SFMTA) received 510 completed surveys: 101 from attendees of the January 30<sup>th</sup> meeting held at the San Francisco County Fair Building and 409 from community members who completed the survey online. The survey was available online from January 31, 2014 through February 20, 2014.

Results from the survey, including a map of survey respondents home ZIP codes, are summarized in the following pages. Not all survey respondents answered every question. Some questions allowed multiple answers per person.



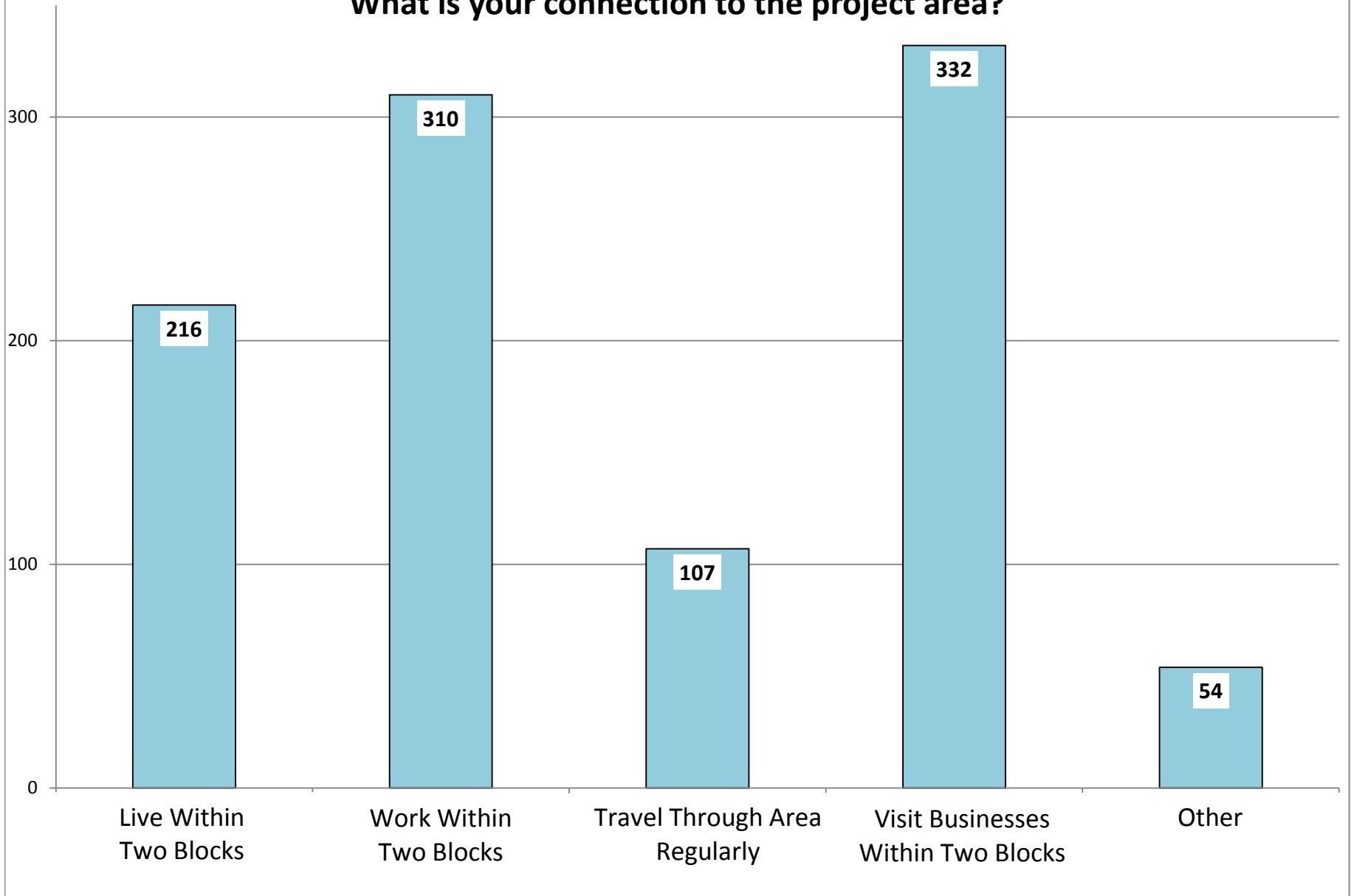


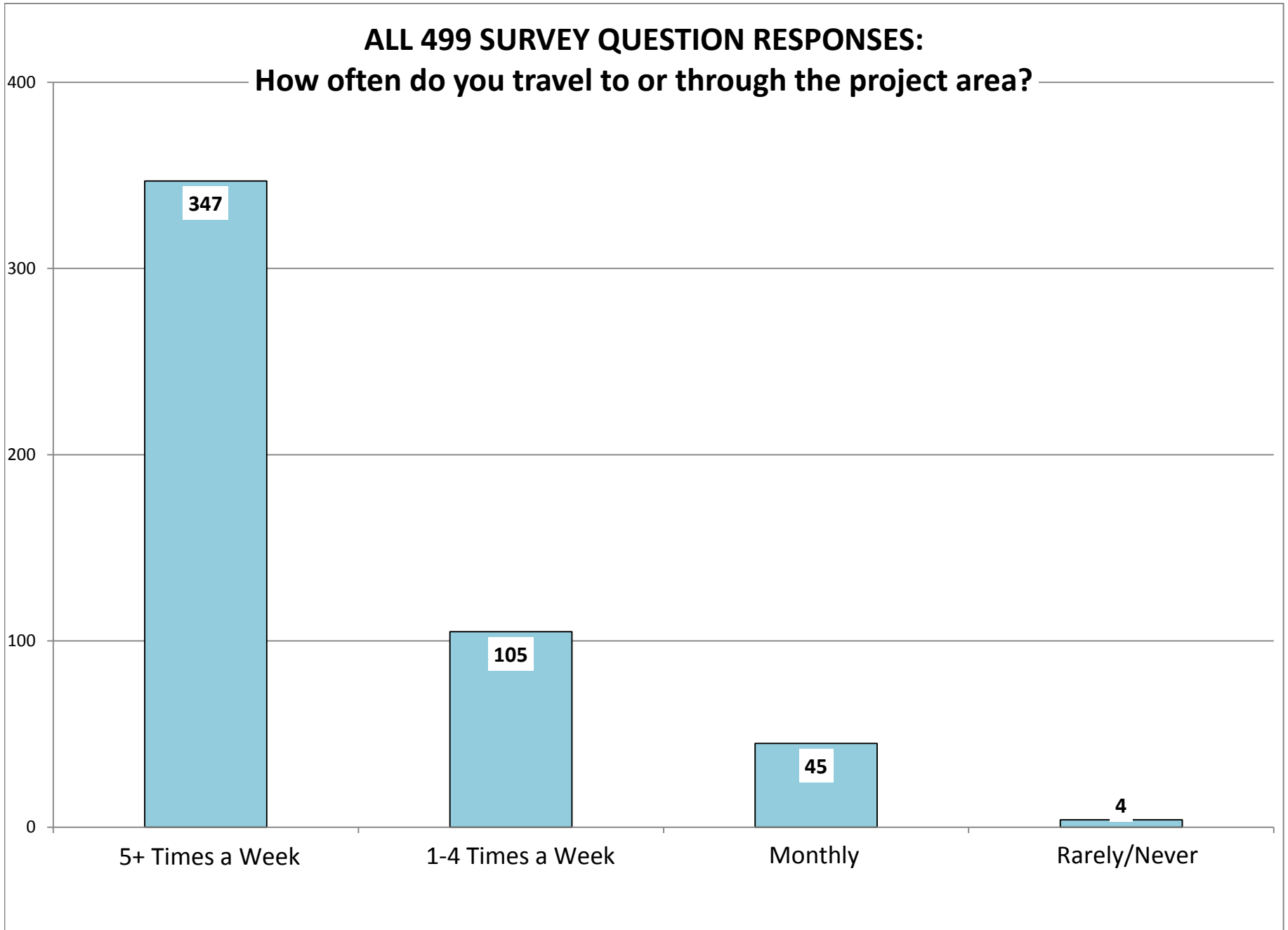
**Number of responses per ZIP code**  
Total Responses: 505

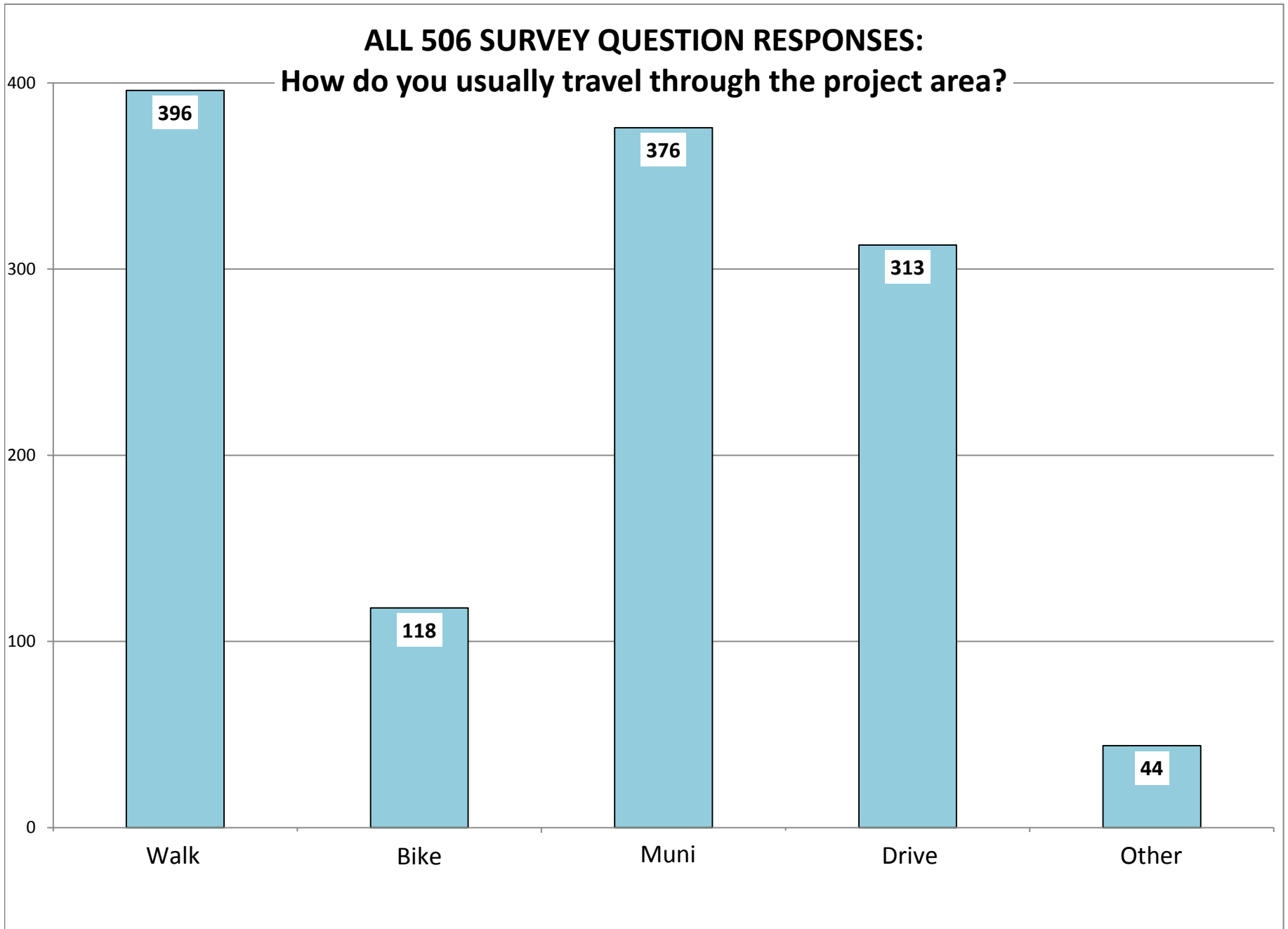


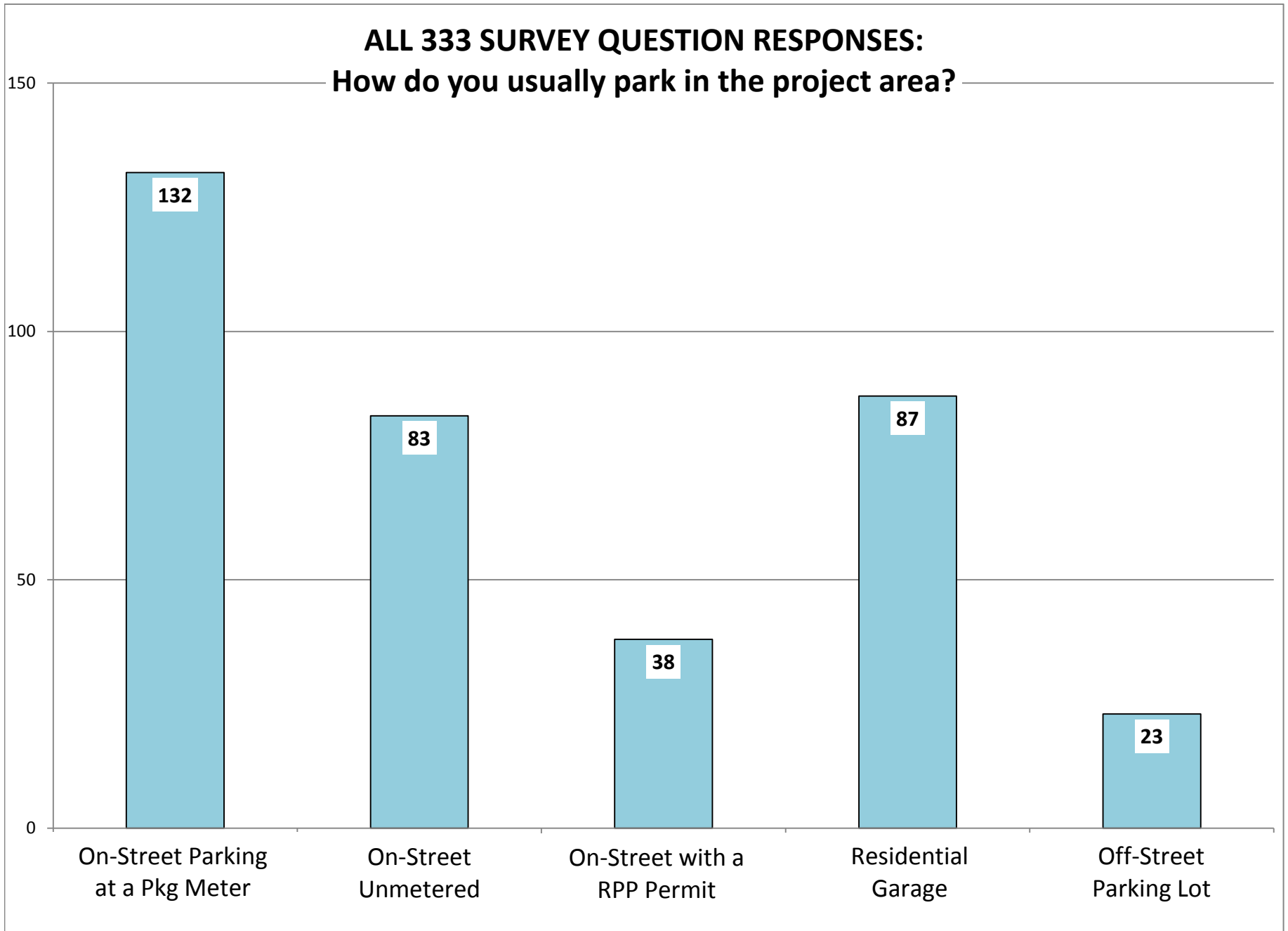


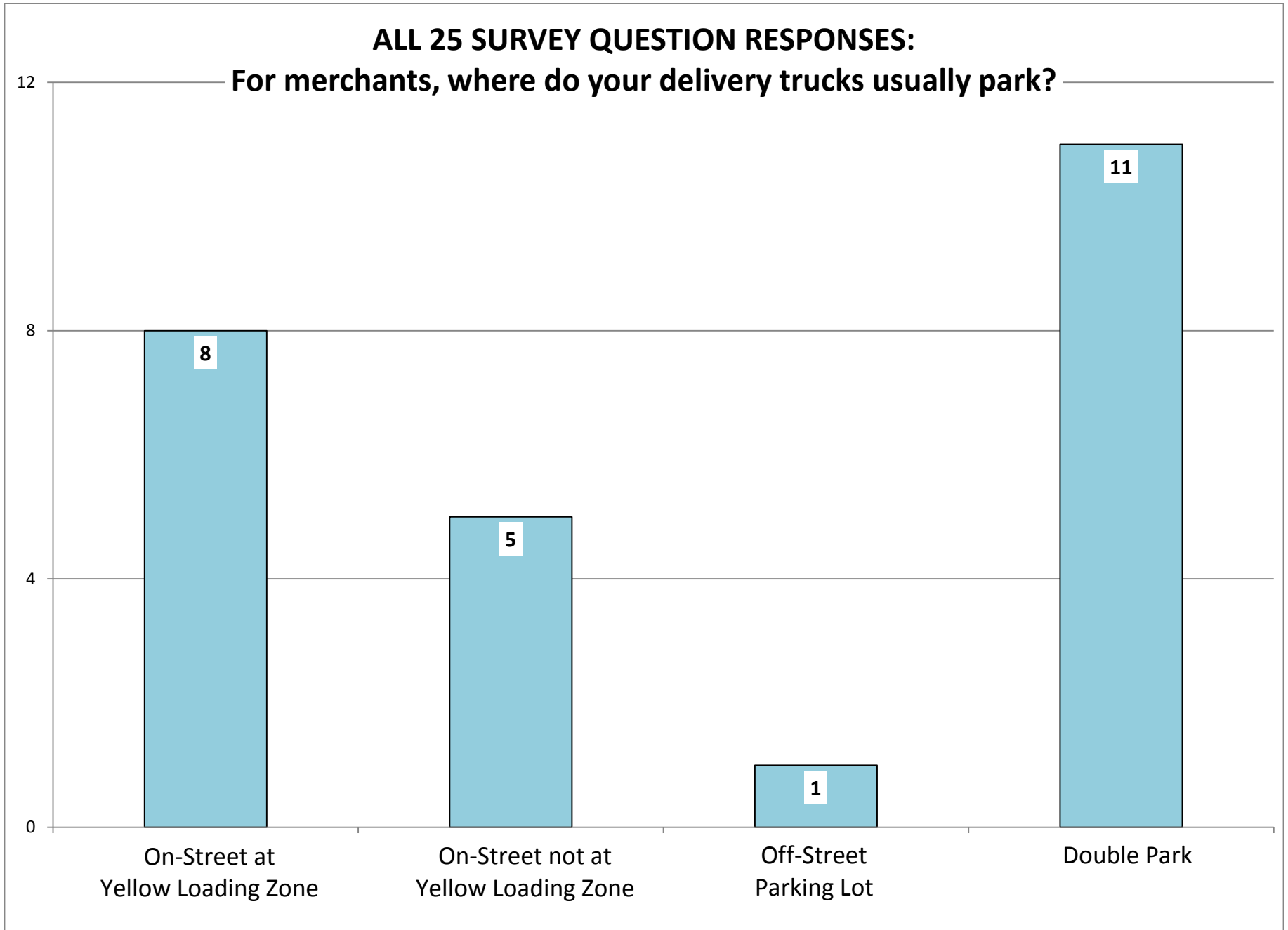
### ALL 505 SURVEY QUESTION RESPONSES: What is your connection to the project area?



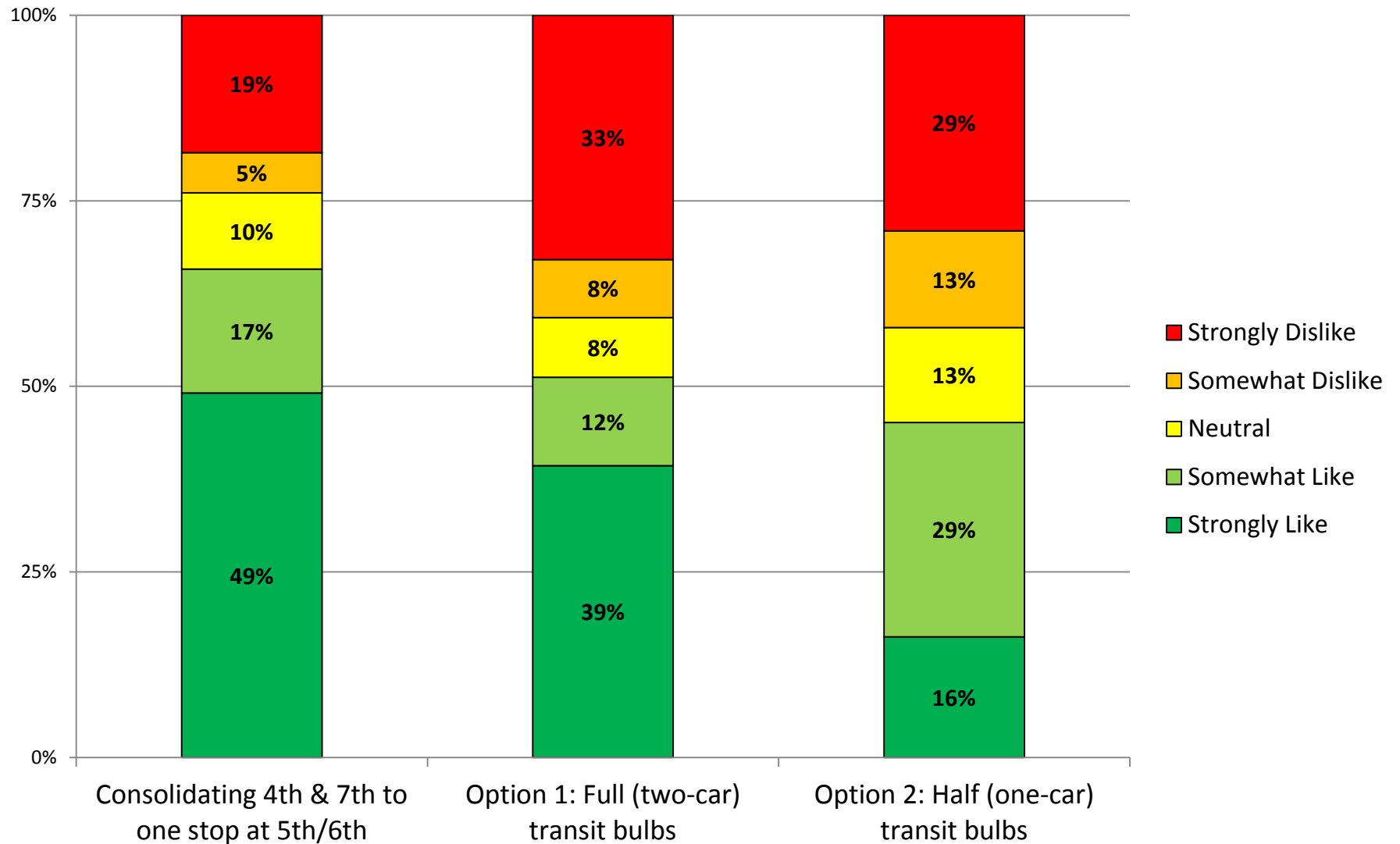




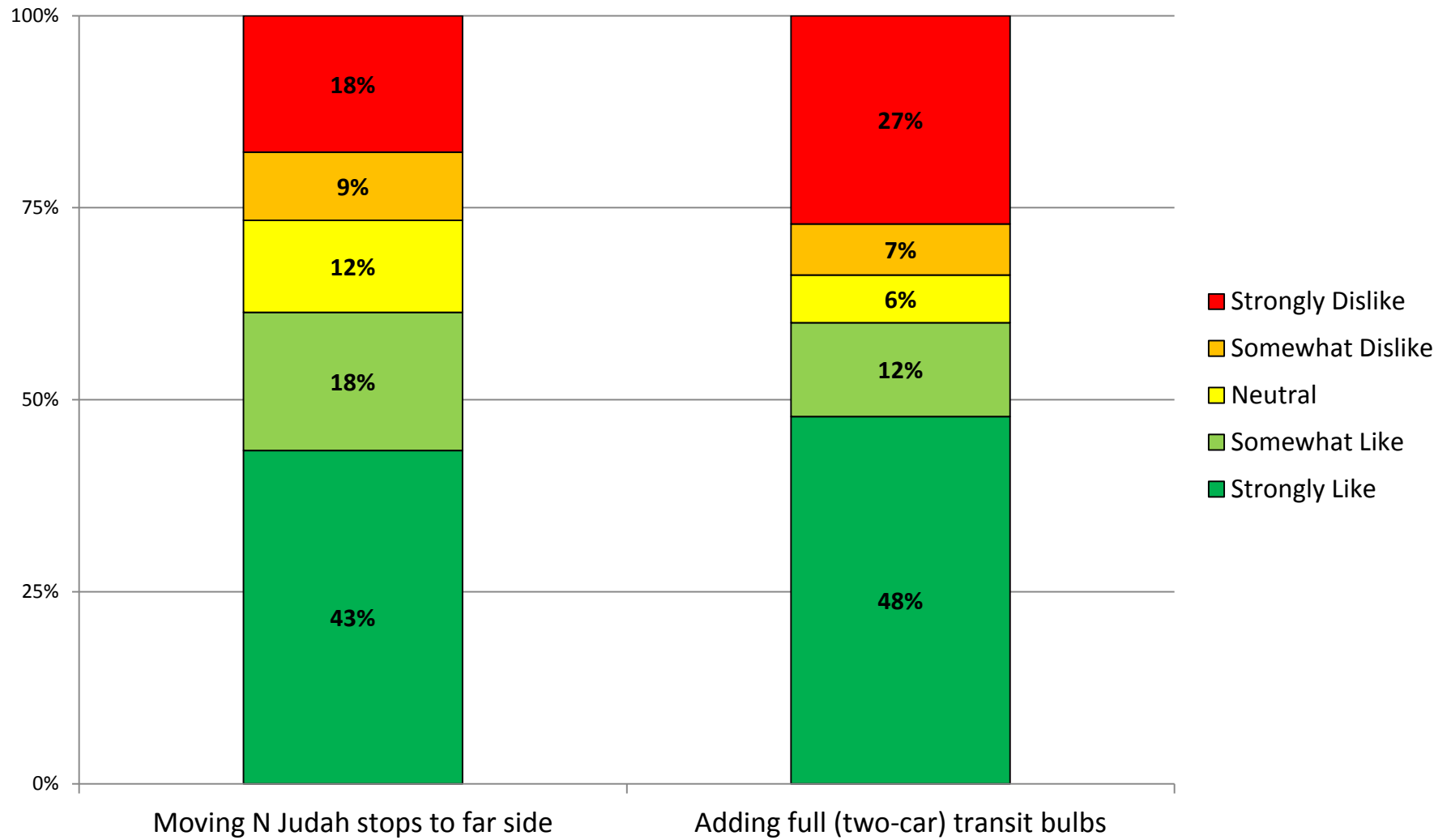


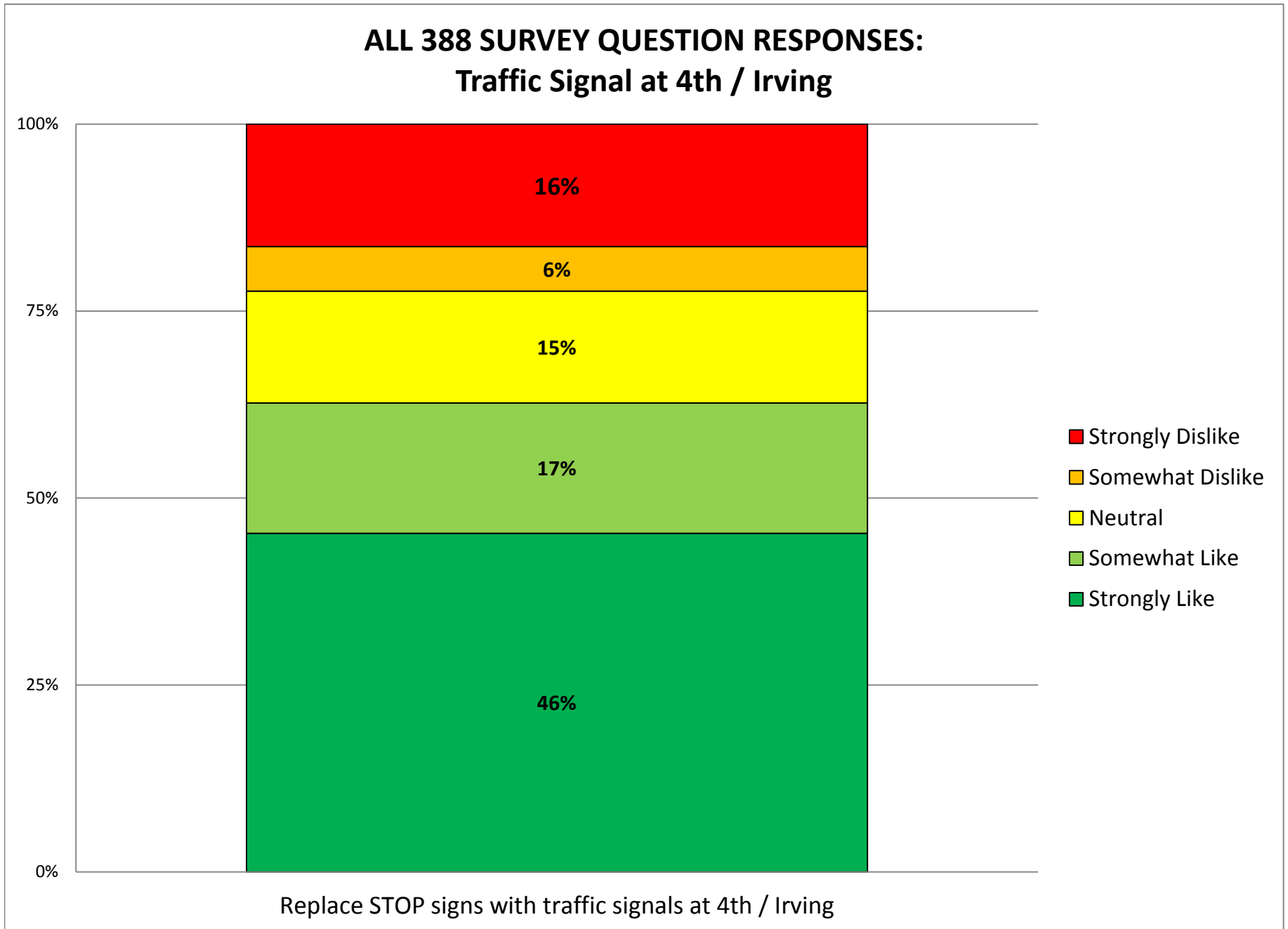


### ALL 499 SURVEY QUESTION RESPONSES: N Judah Stop Changes on Irving Between 4th and 7th



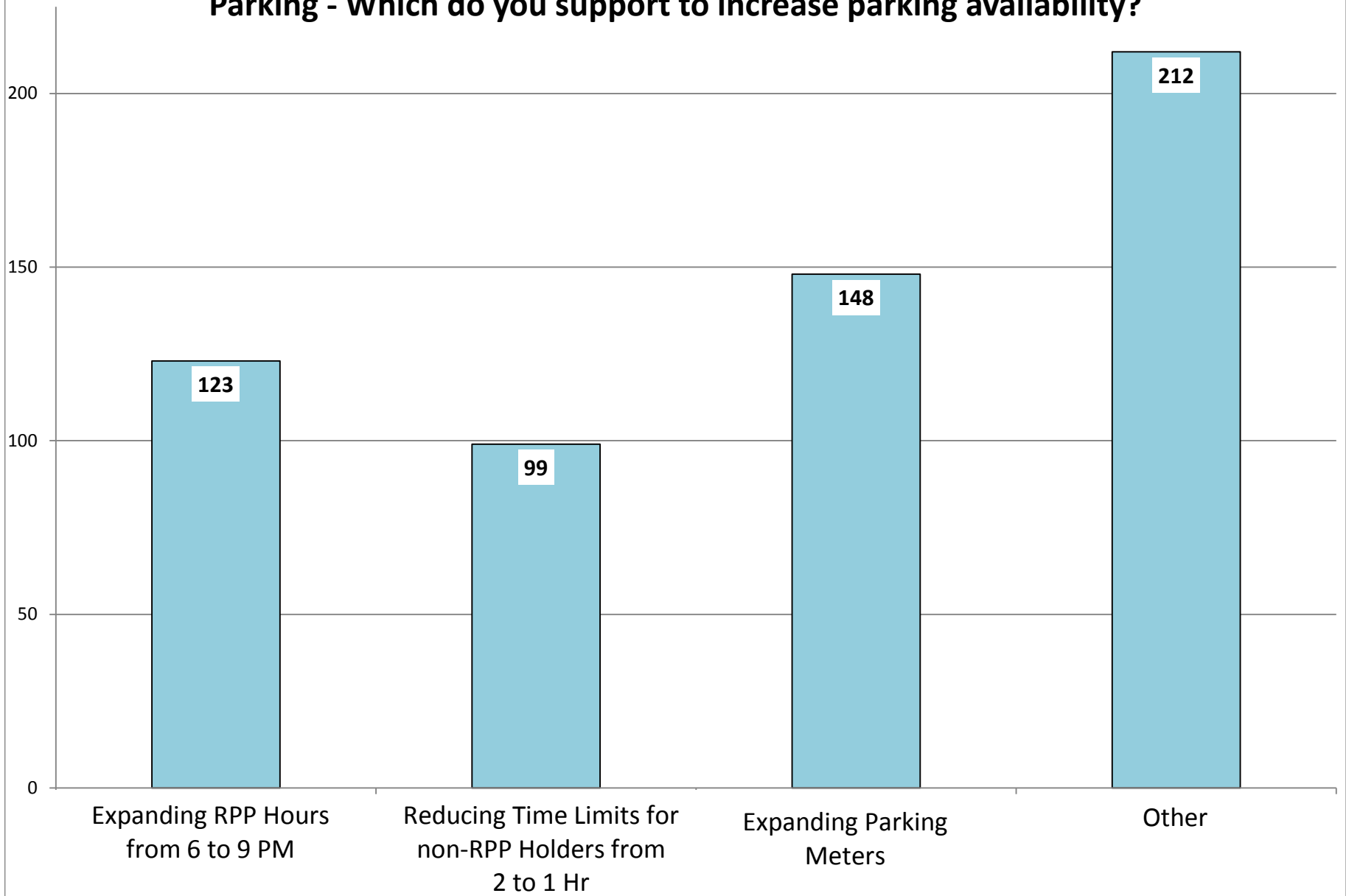
### ALL 487 SURVEY QUESTION RESPONSES: N Judah Stop Changes at 9th / Irving

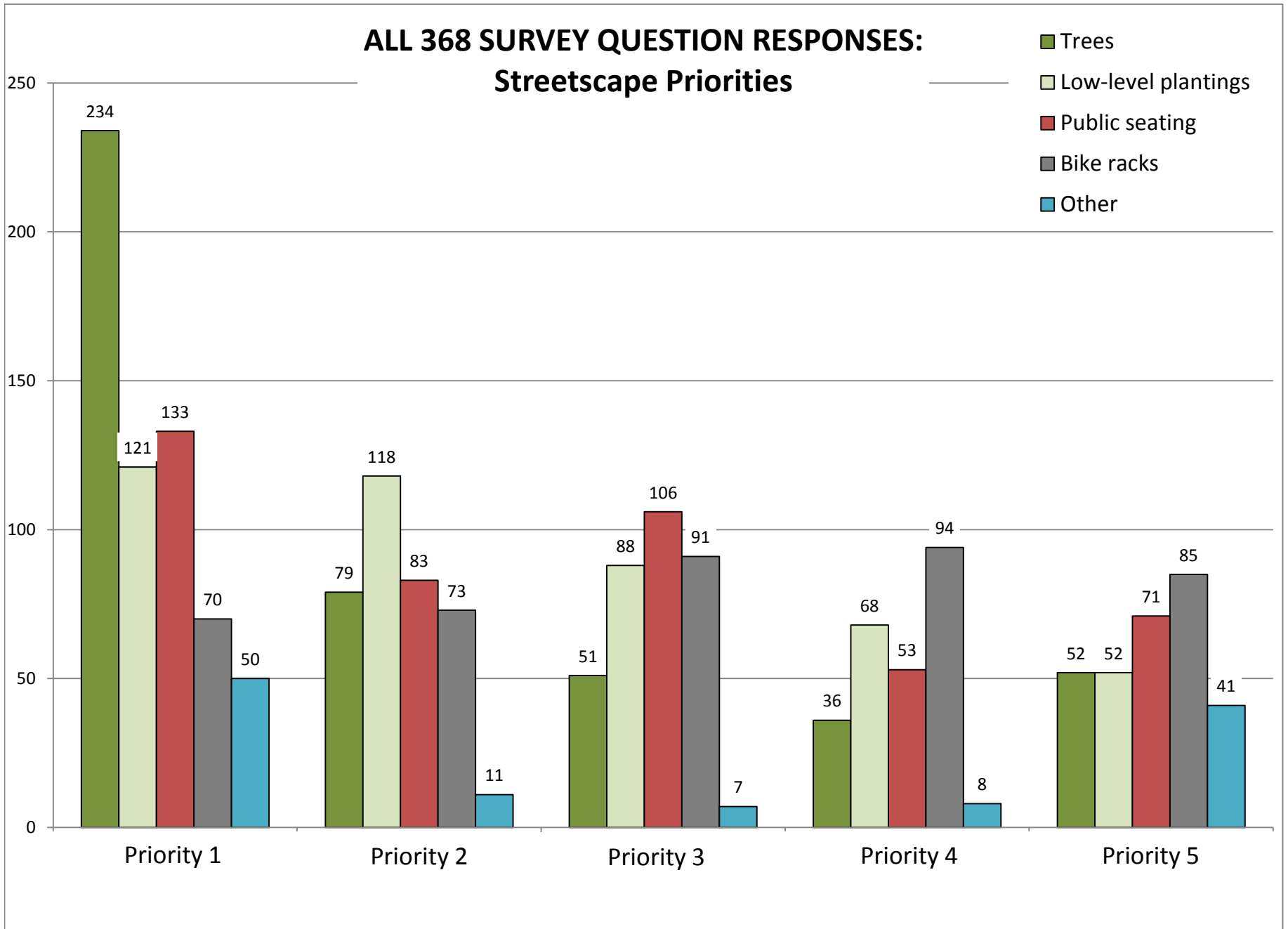


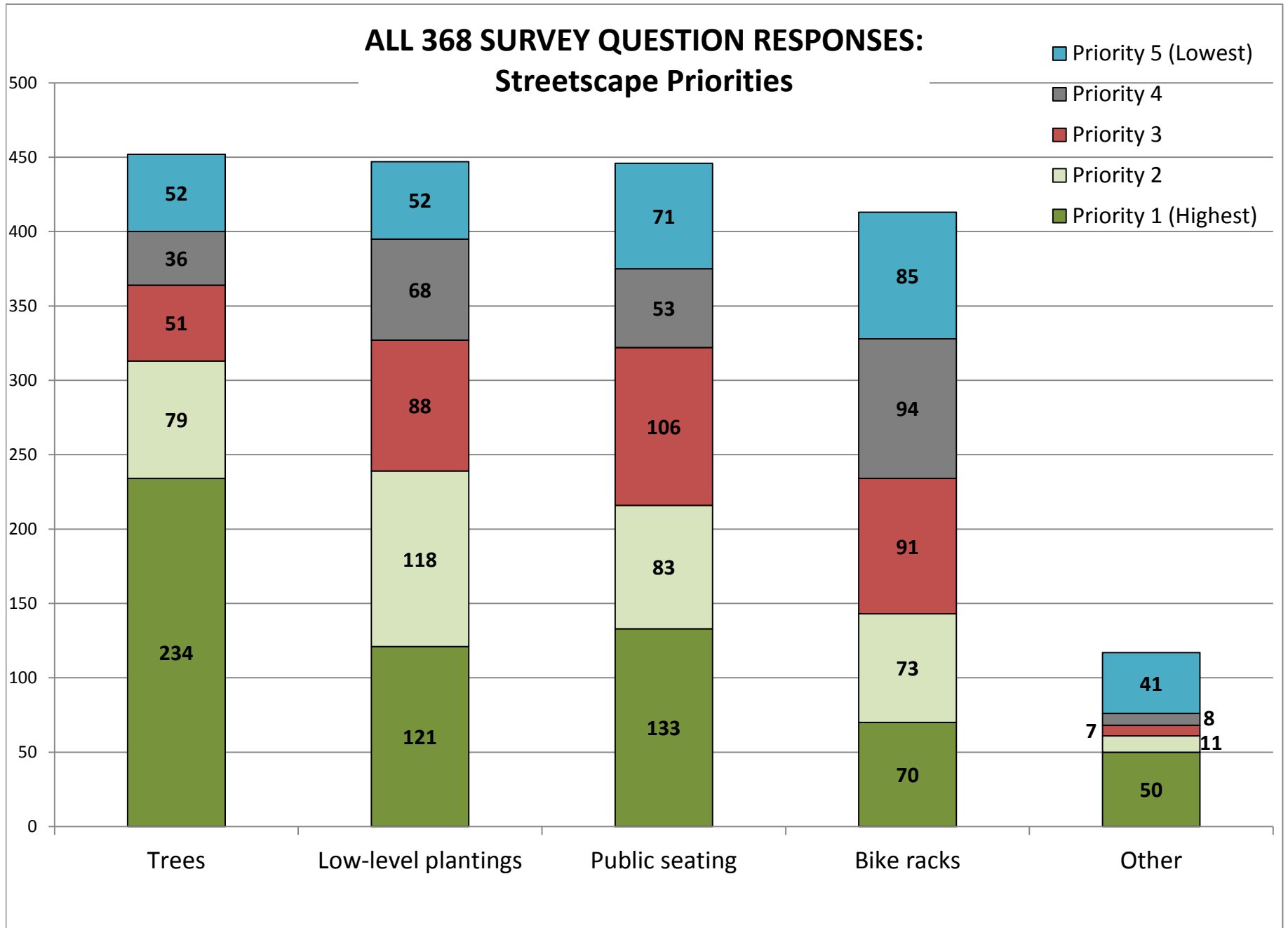


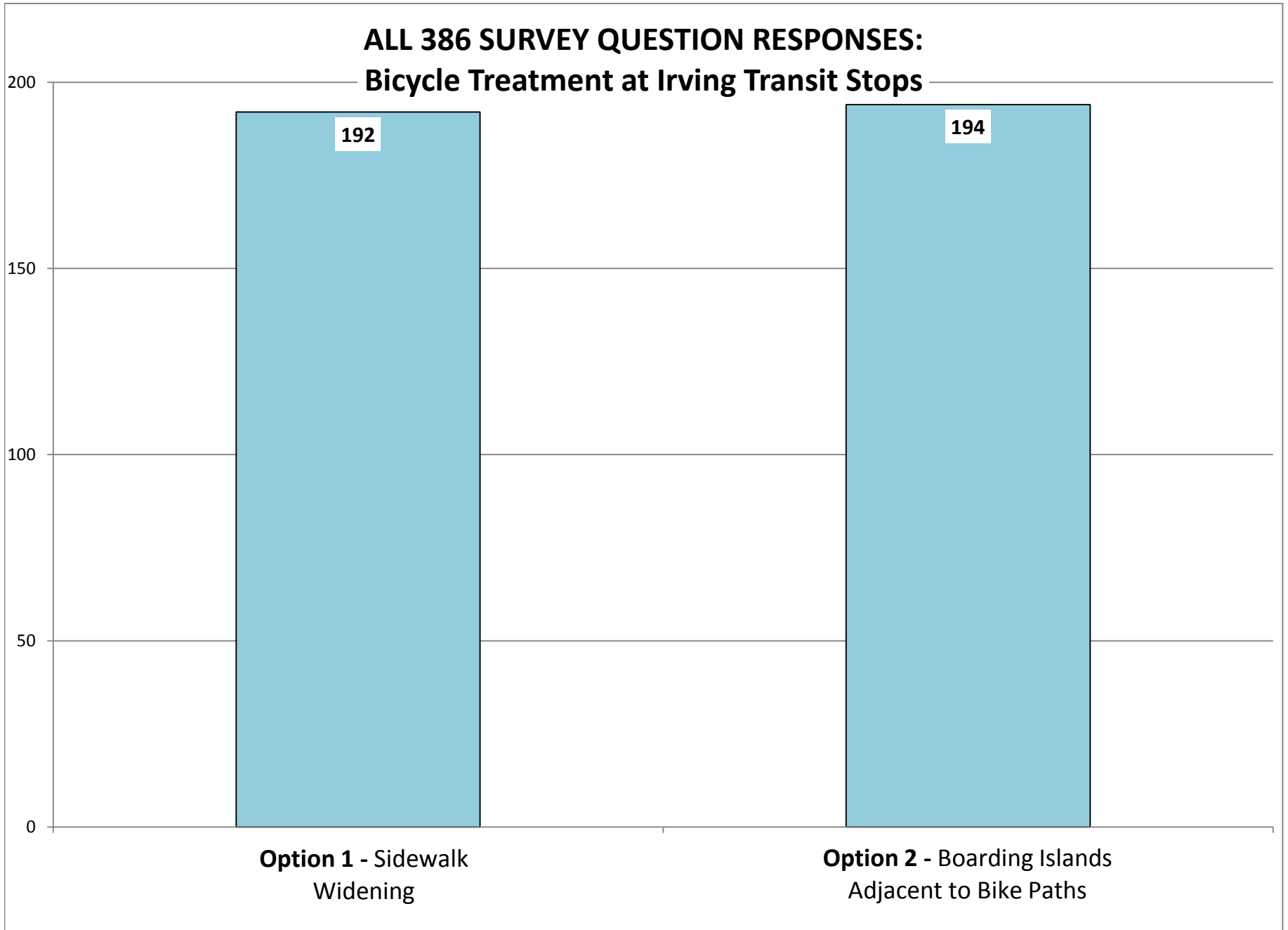


### ALL 411 SURVEY QUESTION RESPONSES: Parking - Which do you support to increase parking availability?









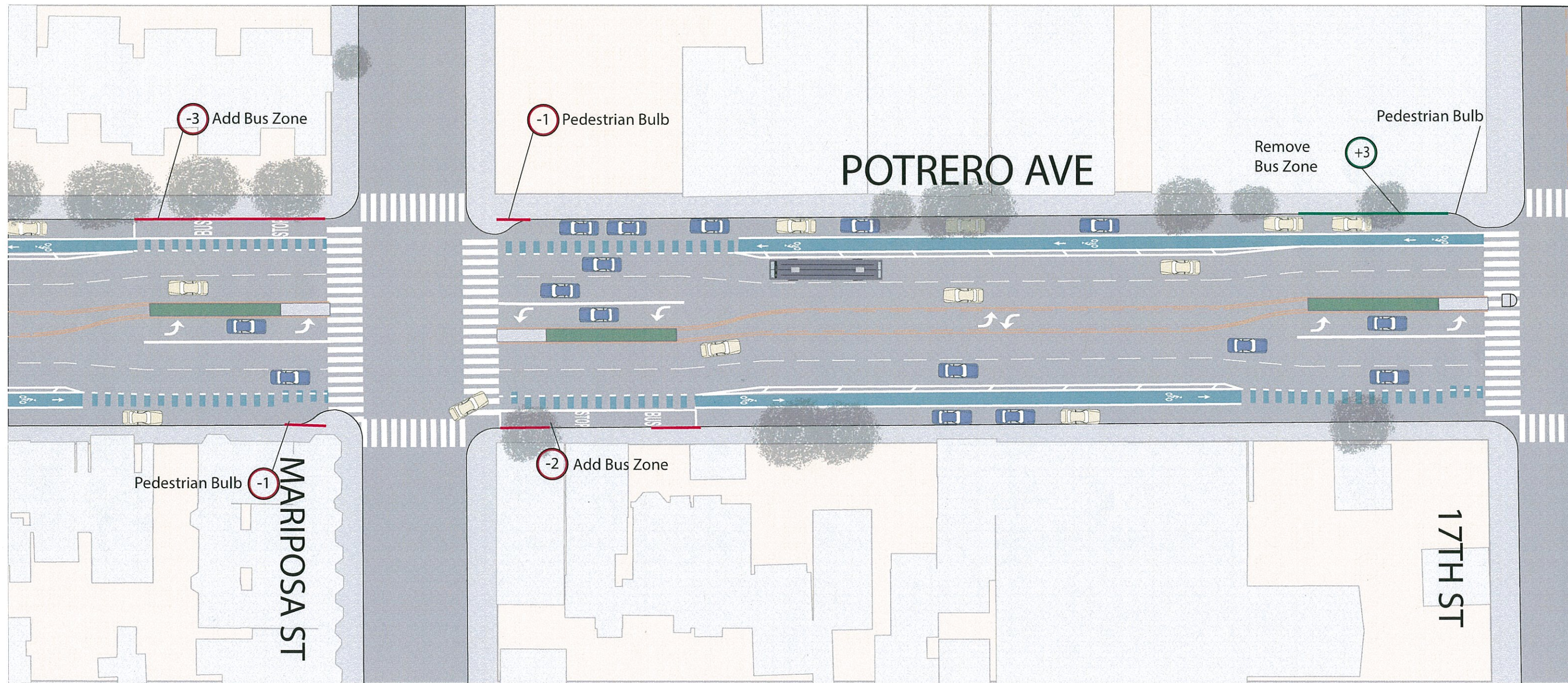
## Summary of Comments Received via Email/Phone/Letters/Petitions - Irving Street Project

---

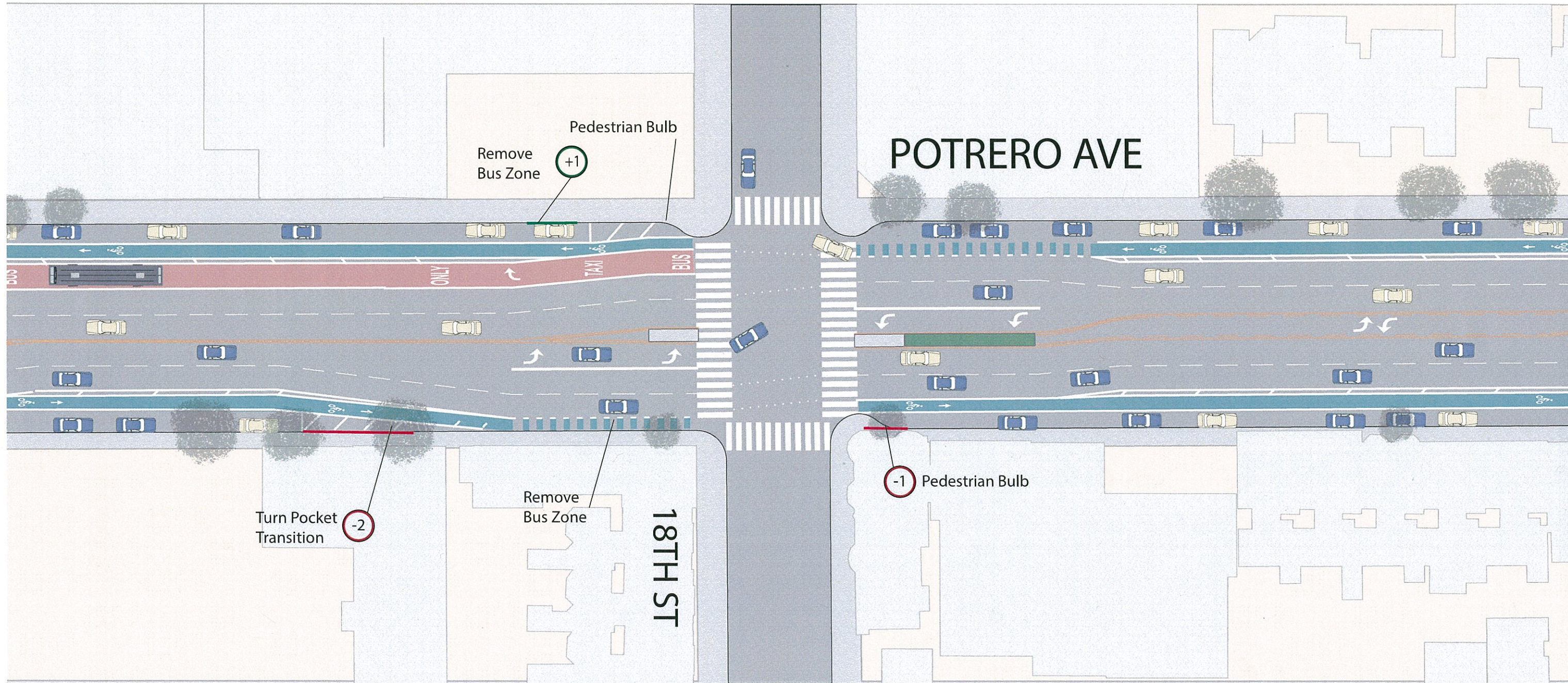
Topic	Number of Comments
Support - General	17
Support - Stop Consolidation	12
Support - Outbound Stop Optimization at 9th/Irving	7
Support - Parking Removal	4
Support - Stop Optimization at 9th/Irving	2
Support - Transit Bulbs (General)	2
Support - Two-Car Length Transit Bulbs	2
Support - Inbound Stop Optimization at 9th/Irving	1
Support - Landscaping Improvements	1
Support - One-Car Length Transit Bulbs	1
Support - Pedestrian Bulbs	1
Support - Traffic Signal at 4th/Irving	1
Support - Transit Signal Priority	1
Concern - General	72
Concern - Parking Removal	26
Concern - Two-Car Length Transit Bulbs	14
Concern - Inbound Stop Optimization at 9th/Irving	11
Concern - Traffic Signal at 4th/Irving	11
Concern - Impacts to Existing Parklet at Arizmendi	10
Concern - Commercial Loading	6
Concern - Traffic Congestion	6
Concern - Outbound Stop Optimization at 9th/Irving	5
Concern - Outreach Process	4
Concern - Construction Disruption	3
Concern - Stop Consolidation	3
Concern - Traffic Safety at 7th/Irving	3
Concern - Bike Corrals	2
Concern - Transit Bulbs (General)	2
Concern - Transit Stop Location between 5th/6th	2
Concern - Emergency Vehicle Access	1
Concern - Pedestrian Safety at 9th/Irving	1
Concern - Stop Optimization at 9th/Irving	1
Concern - Existing Transit Shelter Placement 9th/Irving	1
Concern - Bicycle/Track Conflicts at Transit Bulbs	1
Suggestion - Conduct Pilot of Transit Signal Priority	9
Suggestion - Remove Stop Signs at 2nd/Irving	8
Suggestion - Locate Inbound Stop west of 6th	7
Suggestion - Add More N Judah Service	6
Suggestion - Improved Parking Management	4
Suggestion - Add Signs/Lights to Prevent Passing of Stopped Trains	3
Suggestion - Remove Transit Stops at Carl/Hillway	2
Suggestion - Add Cameras at 7th/Irving and 9th/Irving	1
Suggestion - Ban Lefts at 7th/Irving	1
Suggestion - Open School Parking Lot on 6th to Public	1
Suggestion - Replace Stop Signs at 4th/Irving with Traffic Calming	1
<b>Total Comments in Support</b>	<b>52</b>
<b>Total Comments with Concerns</b>	<b>185</b>
<b>Total Comments with Suggestions</b>	<b>43</b>

Note: This summary does not include comments submitted as part of Project Survey

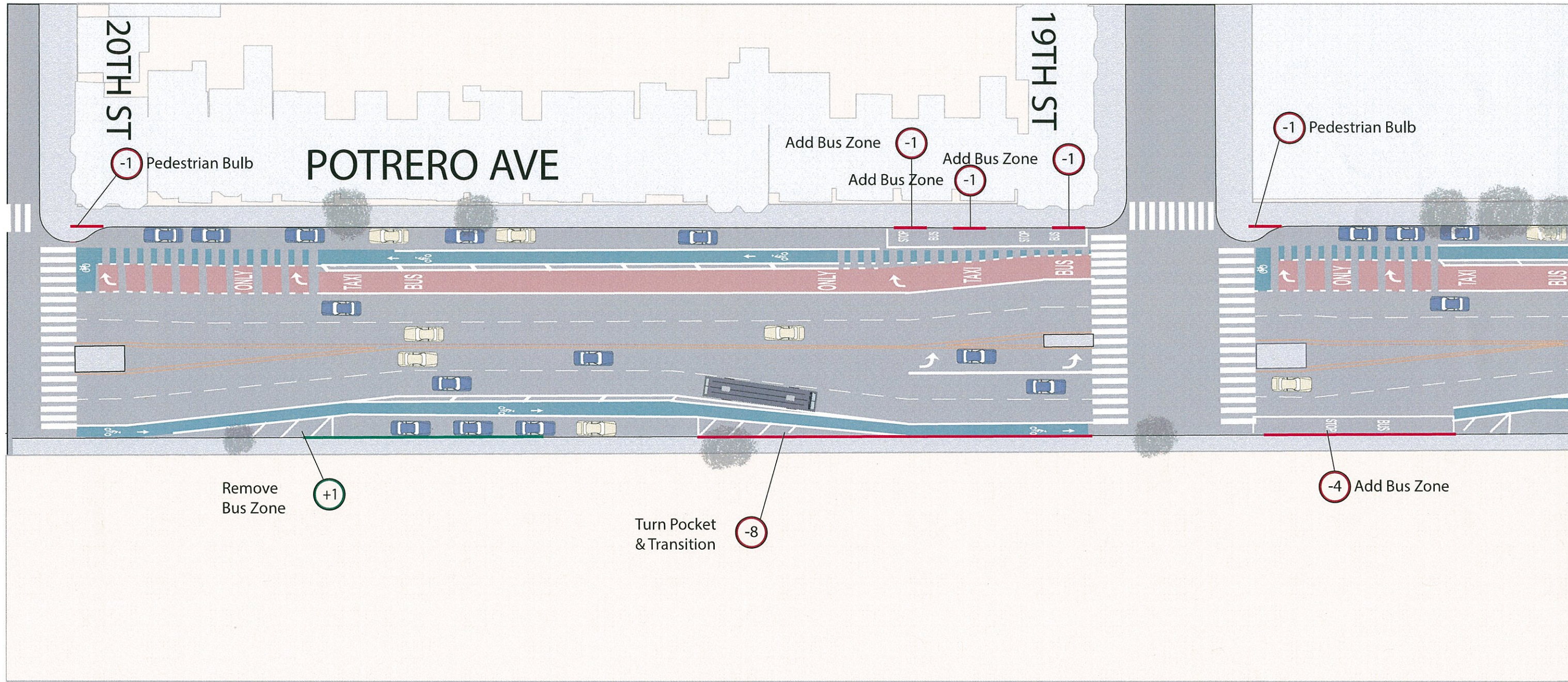




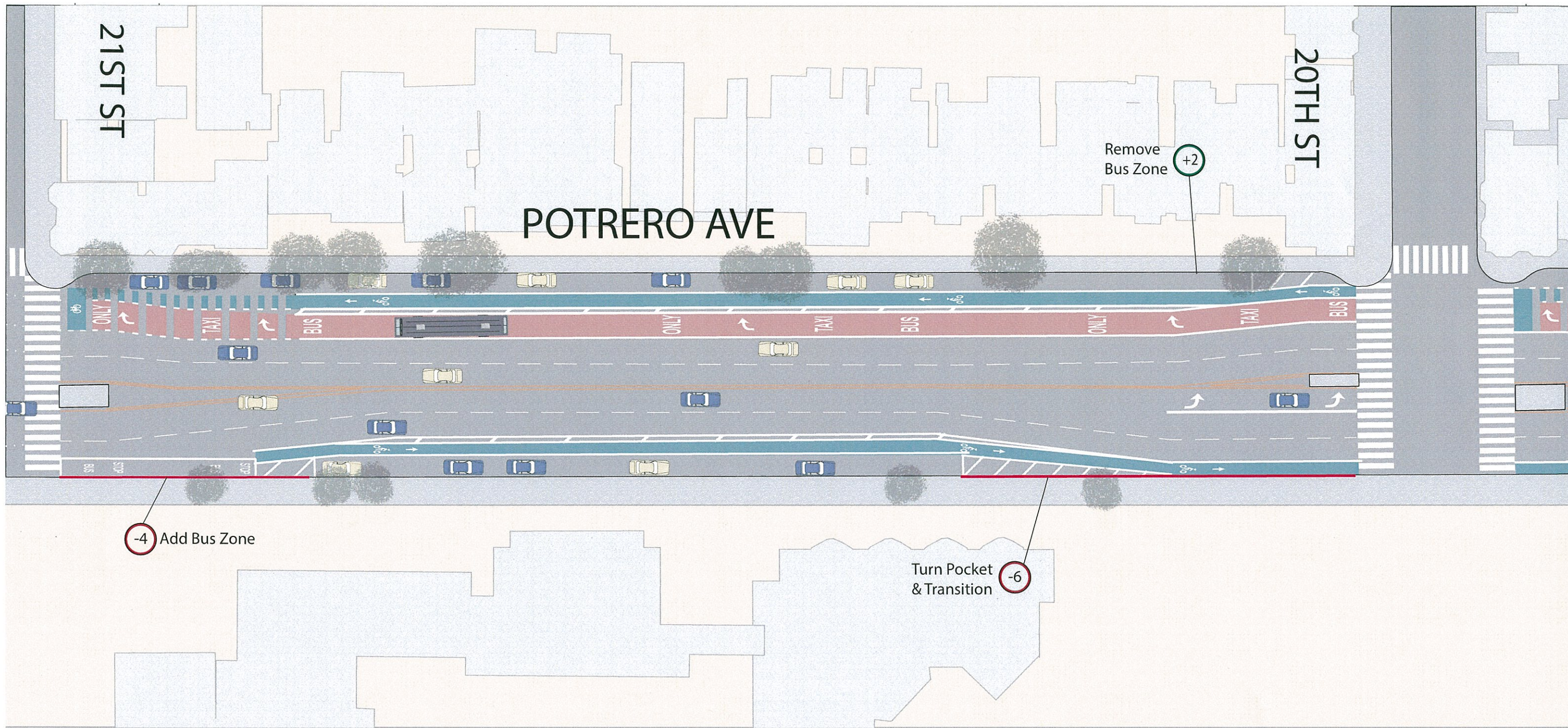




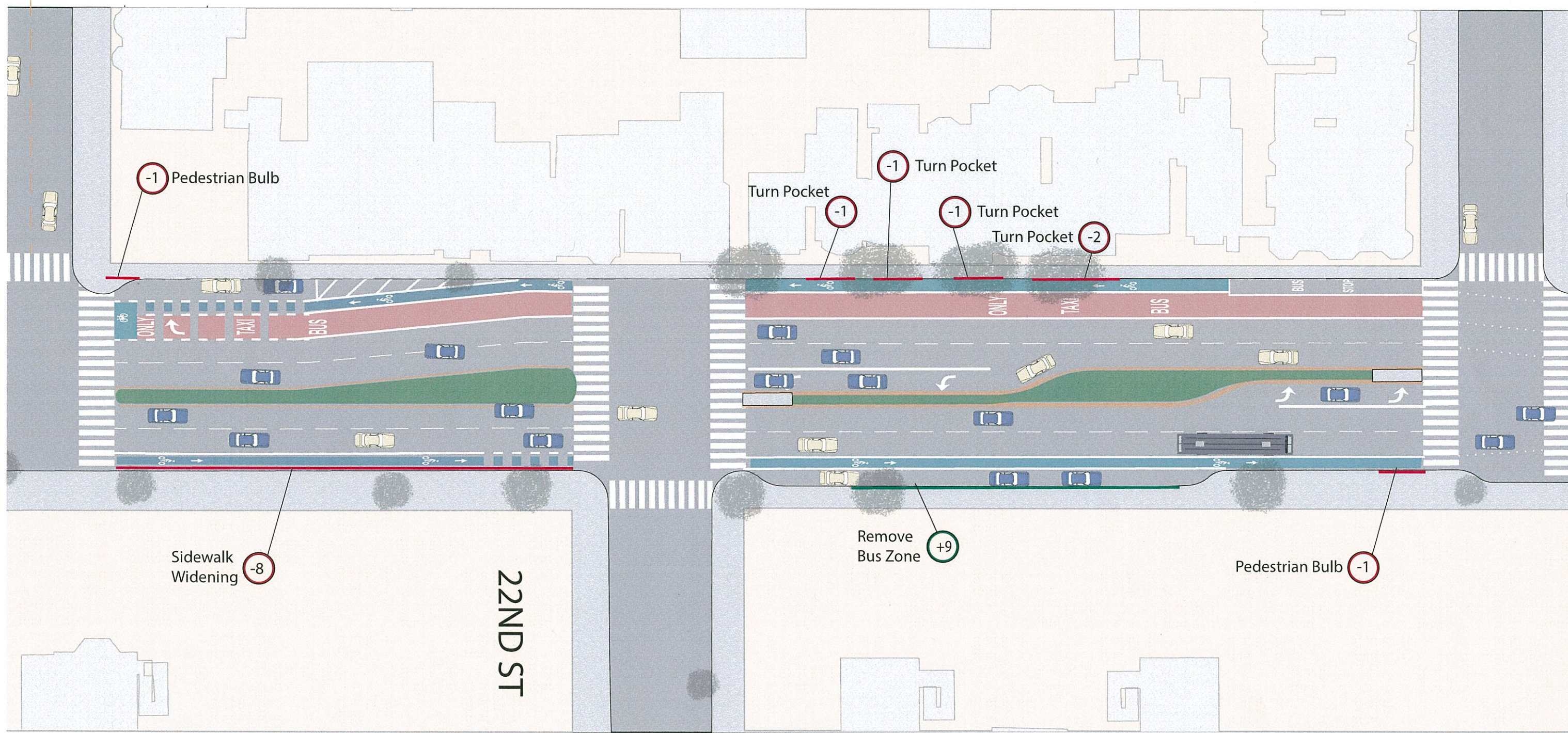






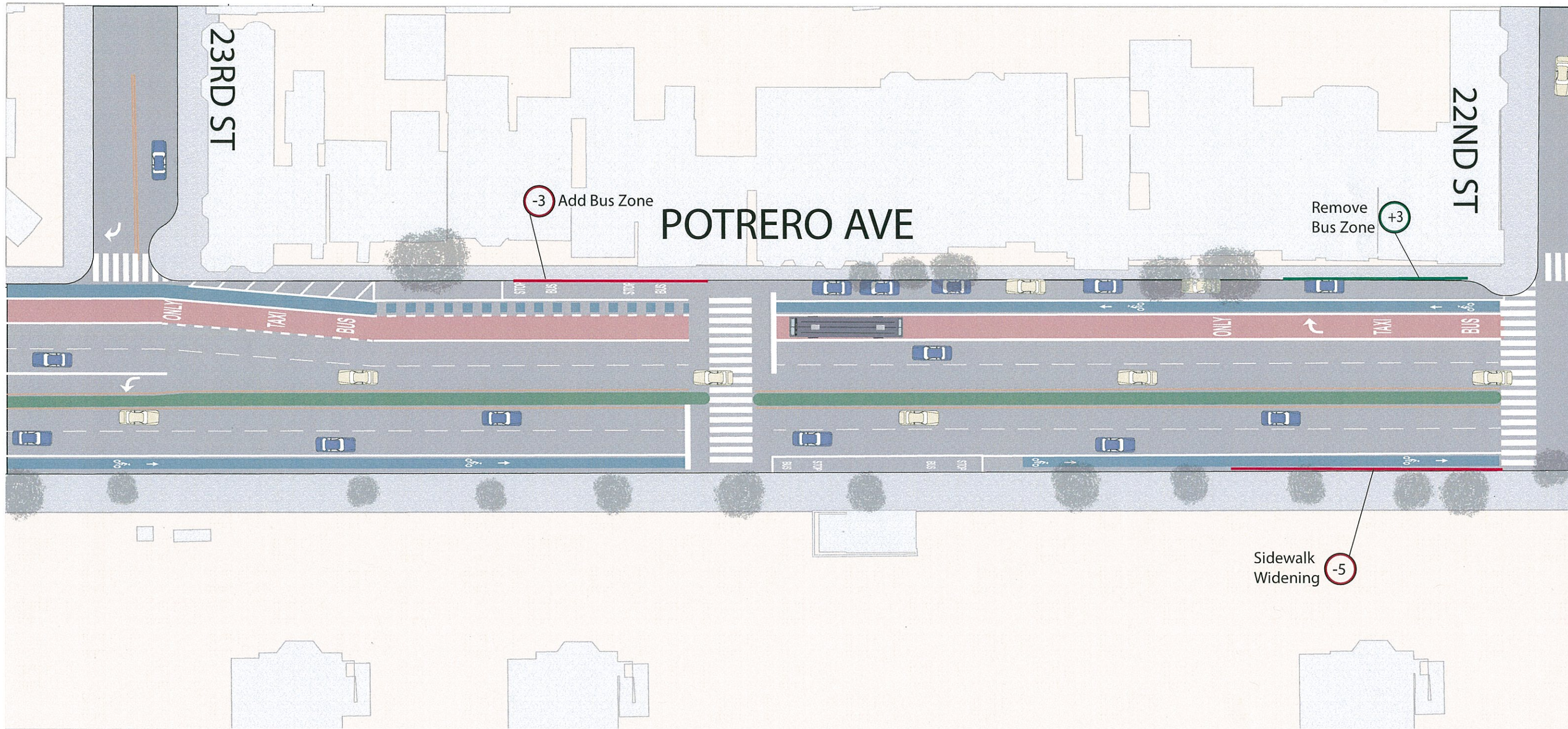




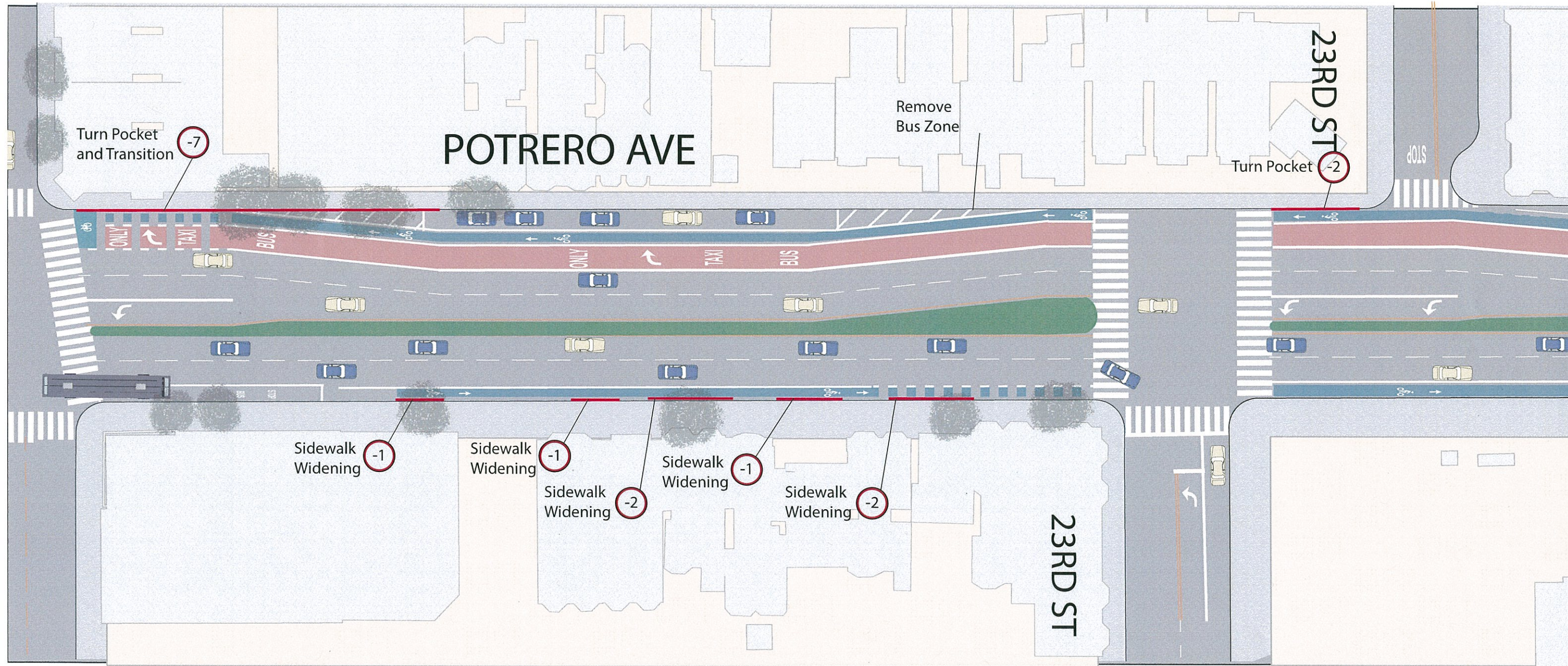


North →

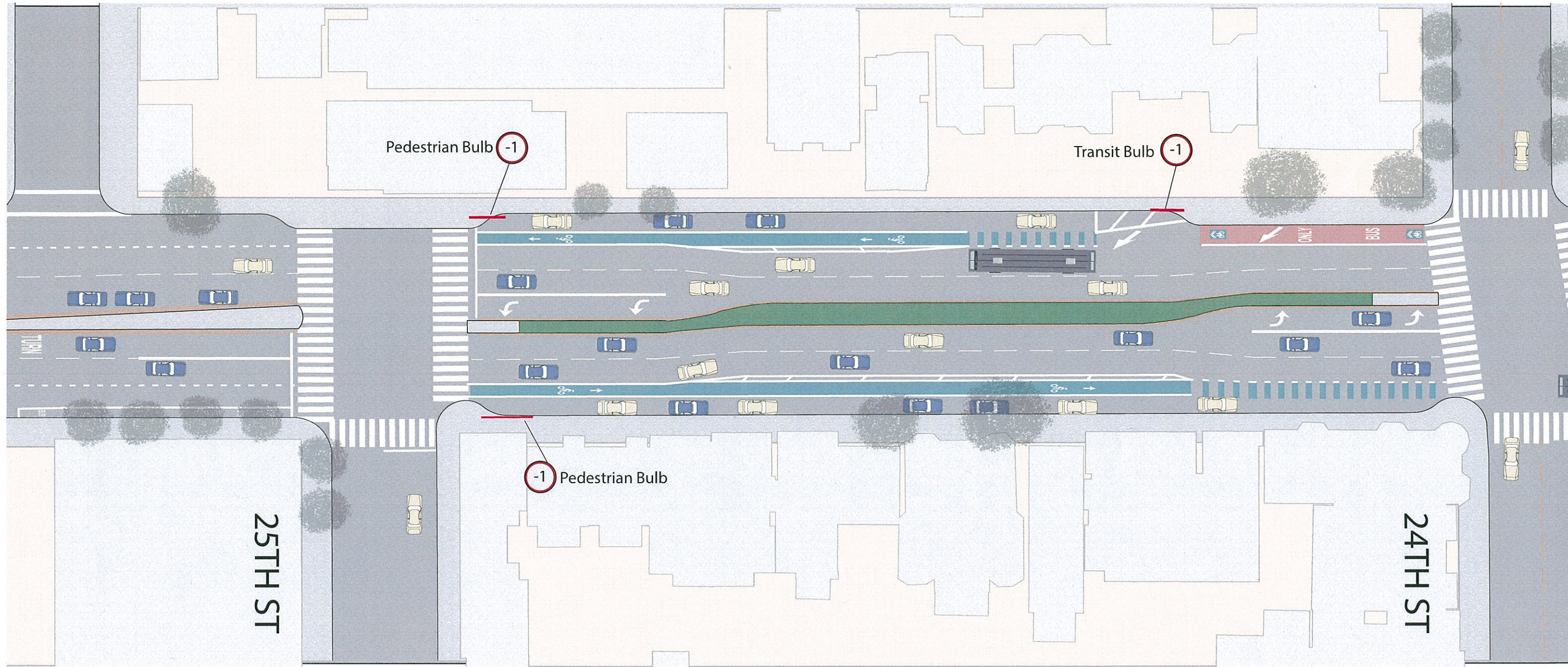




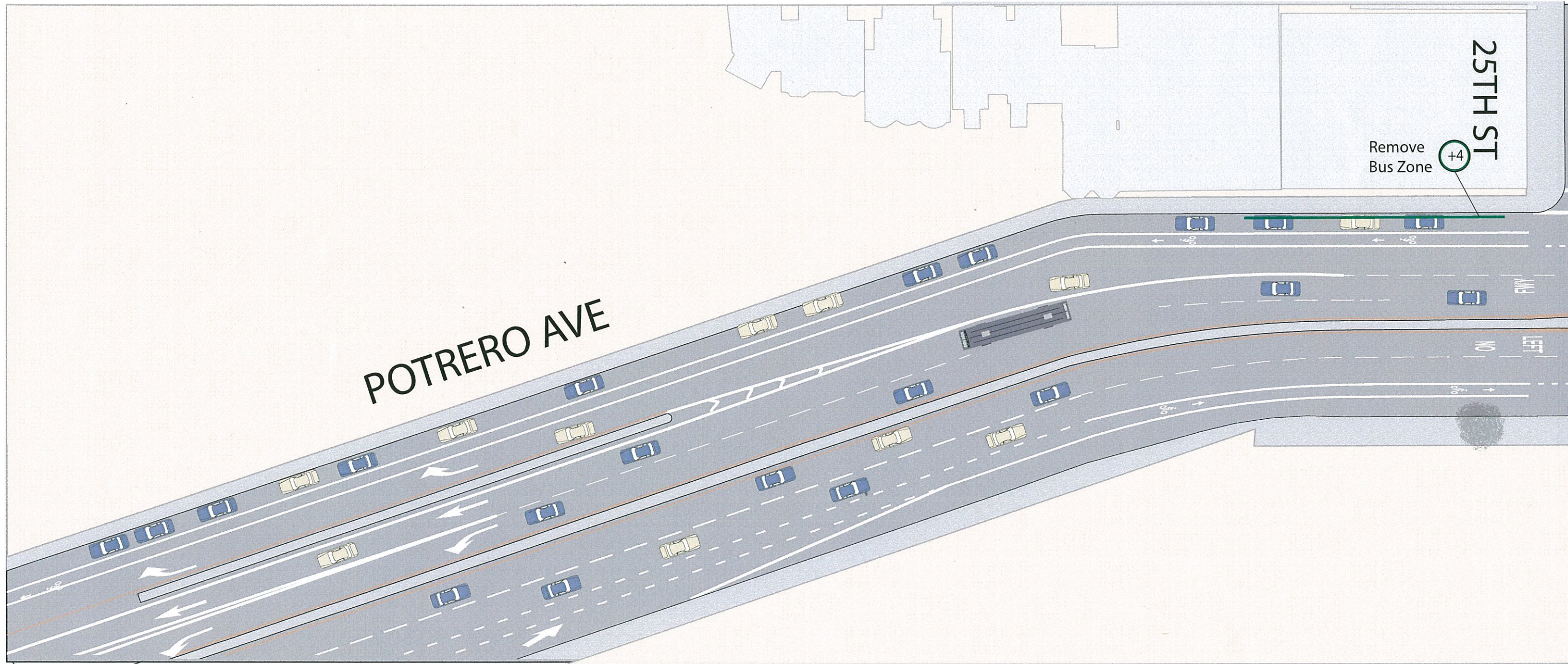








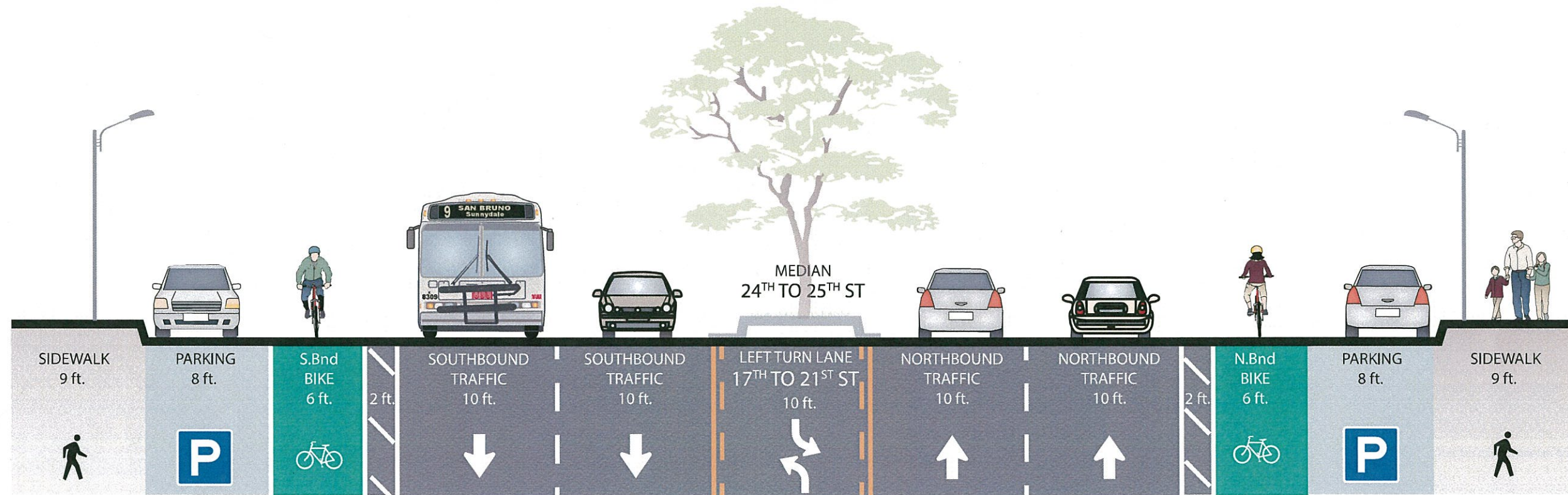




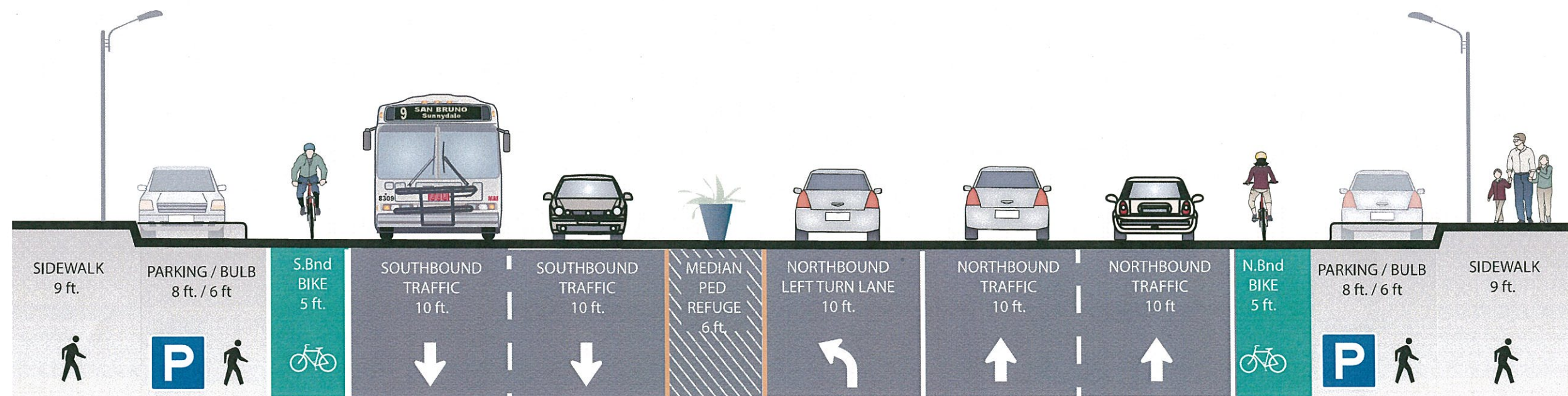


POTRERO AVENUE, FACING NORTH  
17<sup>TH</sup> TO 21<sup>ST</sup> ST and 24<sup>TH</sup> TO 25<sup>TH</sup> ST  
100 ft right of way  
facade to facade

3/21/2014



MIDBLOCK

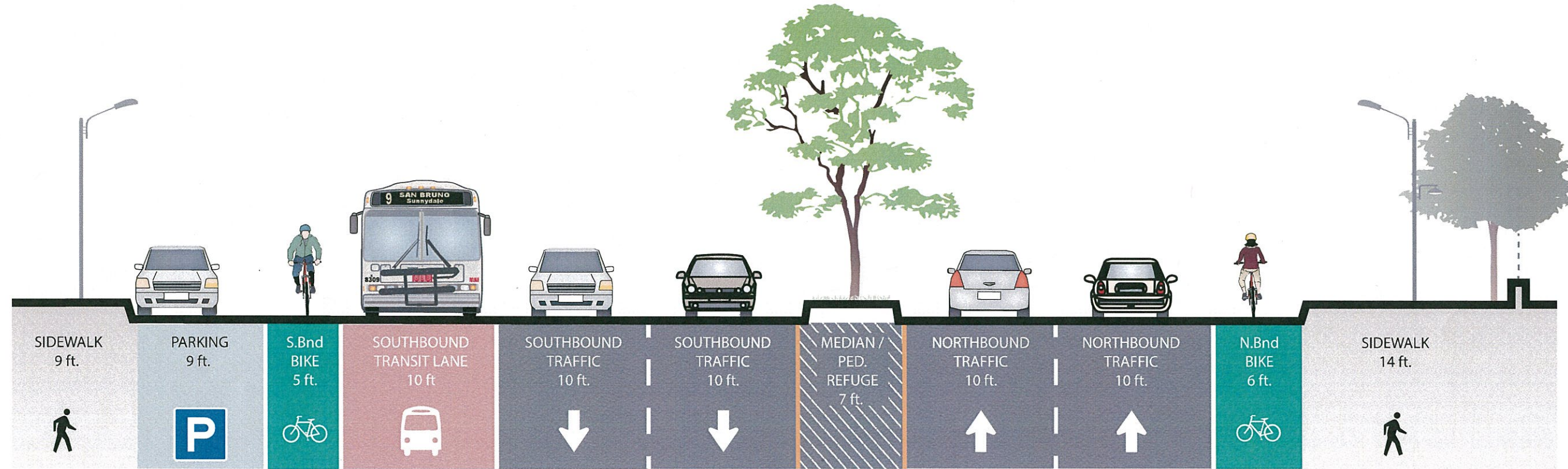


INTERSECTION

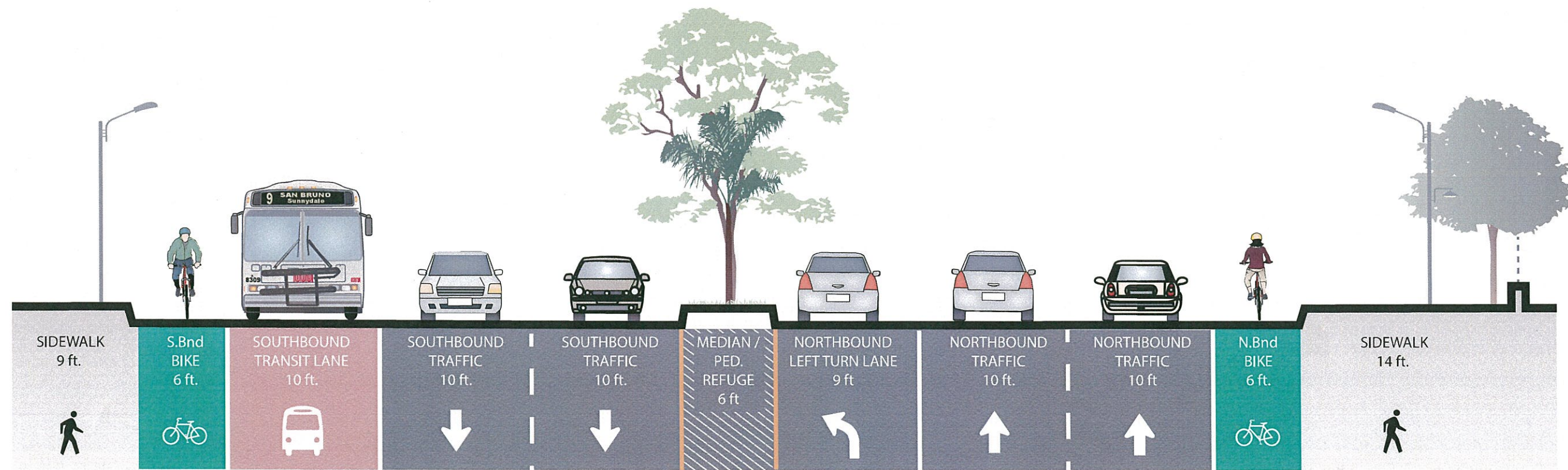


POTRERO AVENUE, FACING NORTH  
TYPICAL BLOCK, 21<sup>ST</sup> TO 24<sup>TH</sup> ST  
100 ft right of way  
facade to facade

3/21/2014



MIDBLOCK



INTERSECTION