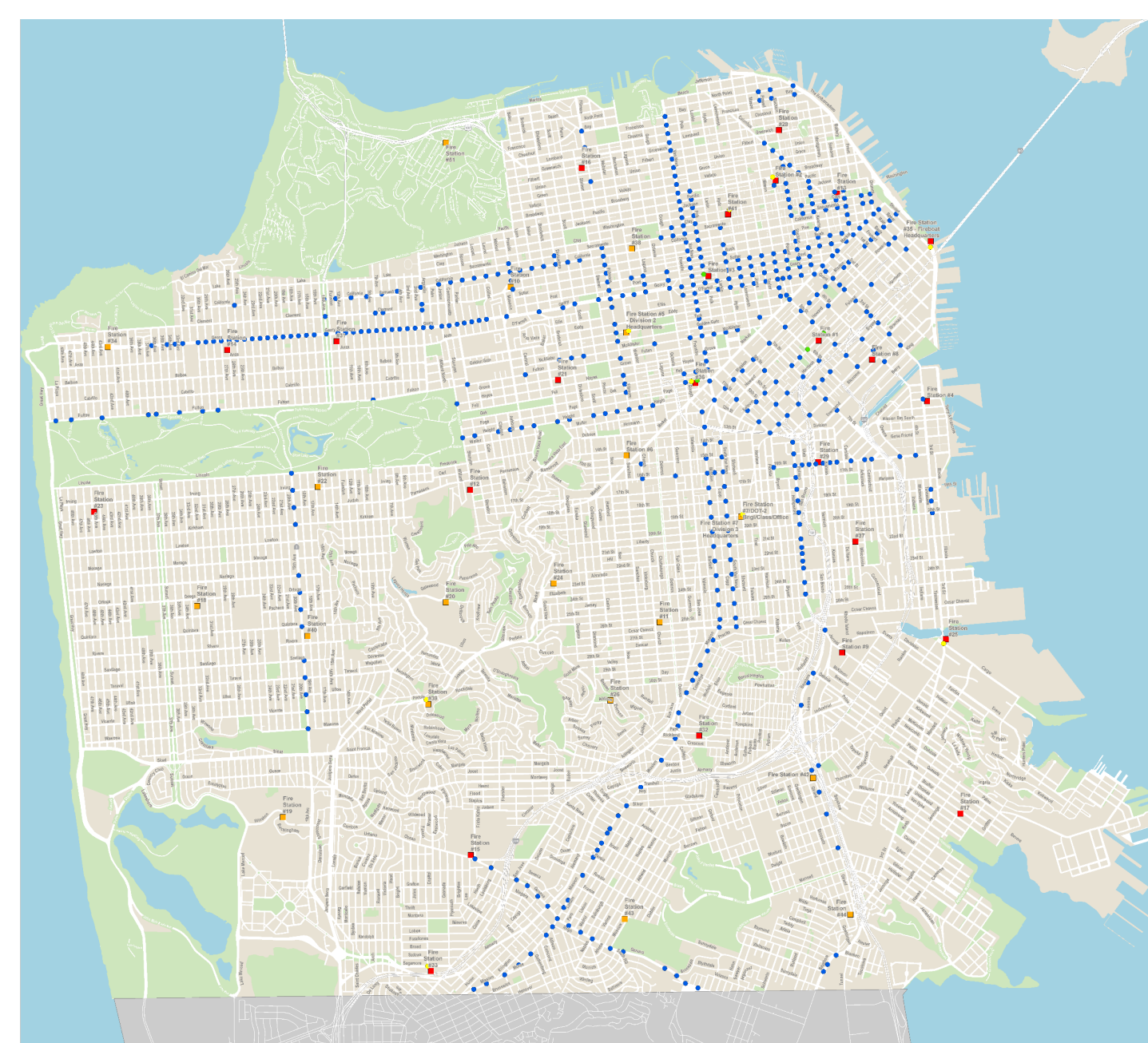
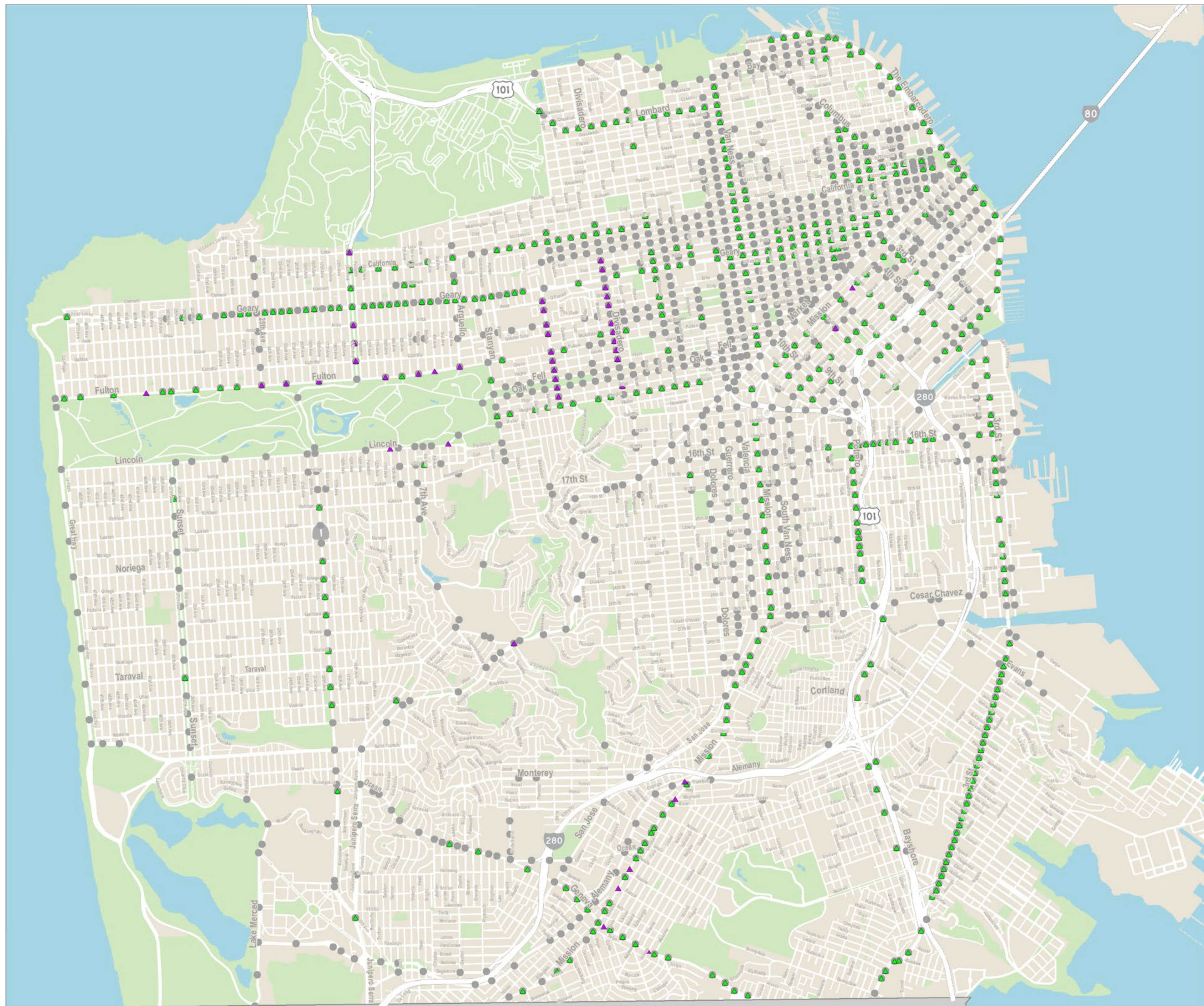


BUS TRANSIT SIGNAL PRIORITY (TSP)

Reducing red light delays and improving transit reliability.



There are 515 intersections equipped with emergency preemption equipment for fire department vehicles. The same equipment used for TSP can also provide emergency preemption, which reduce fire truck response times by holding traffic signals green for approaching fire trucks.

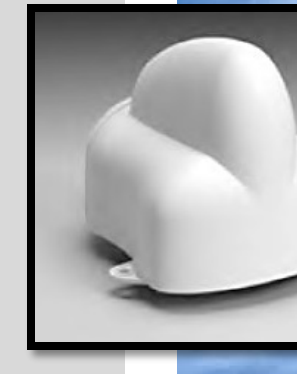
HOW IT WORKS:

TSP reduces the amount of time Muni vehicles spend at red lights by extending the green light when a bus is detected approaching the intersection.

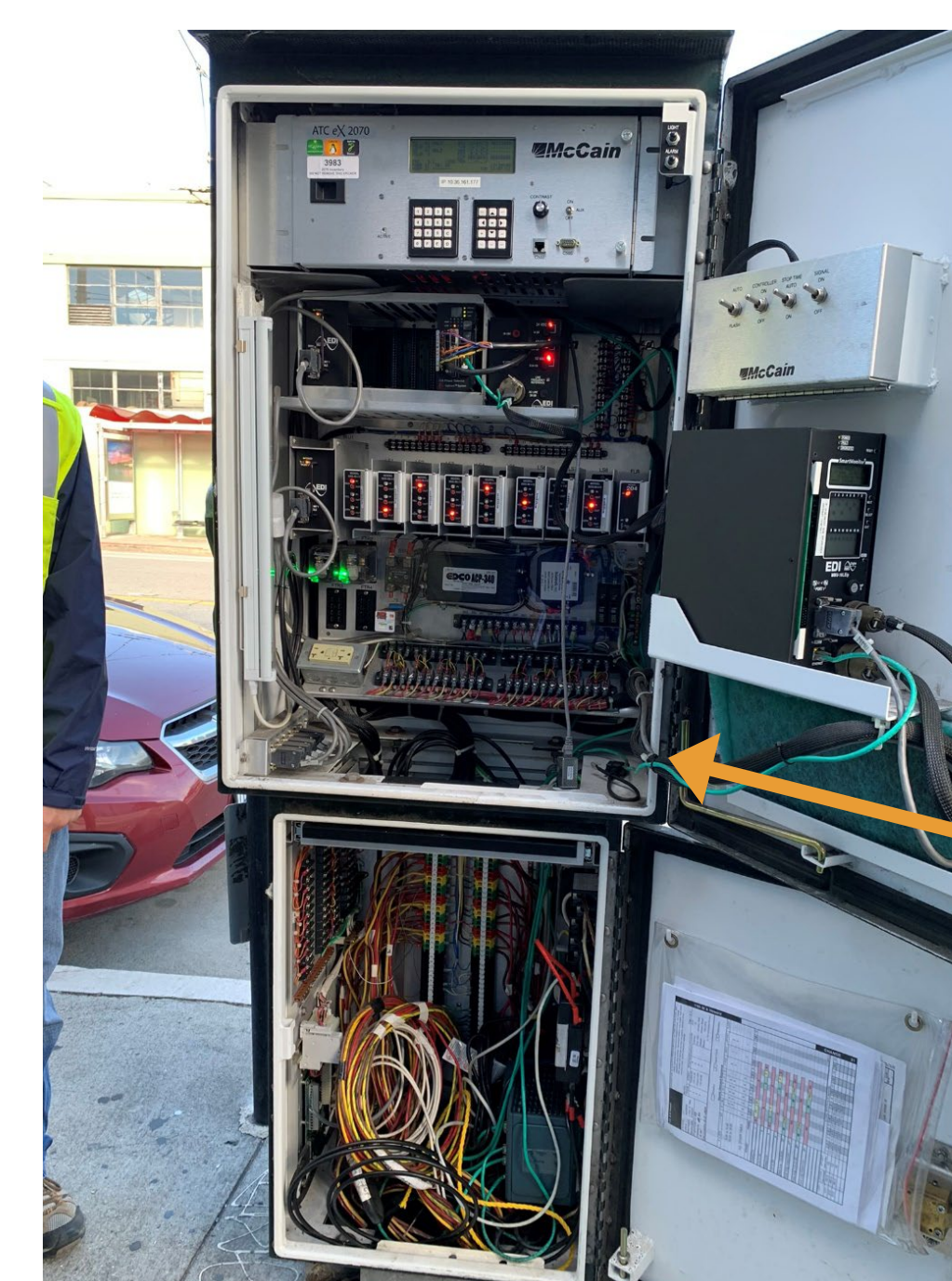
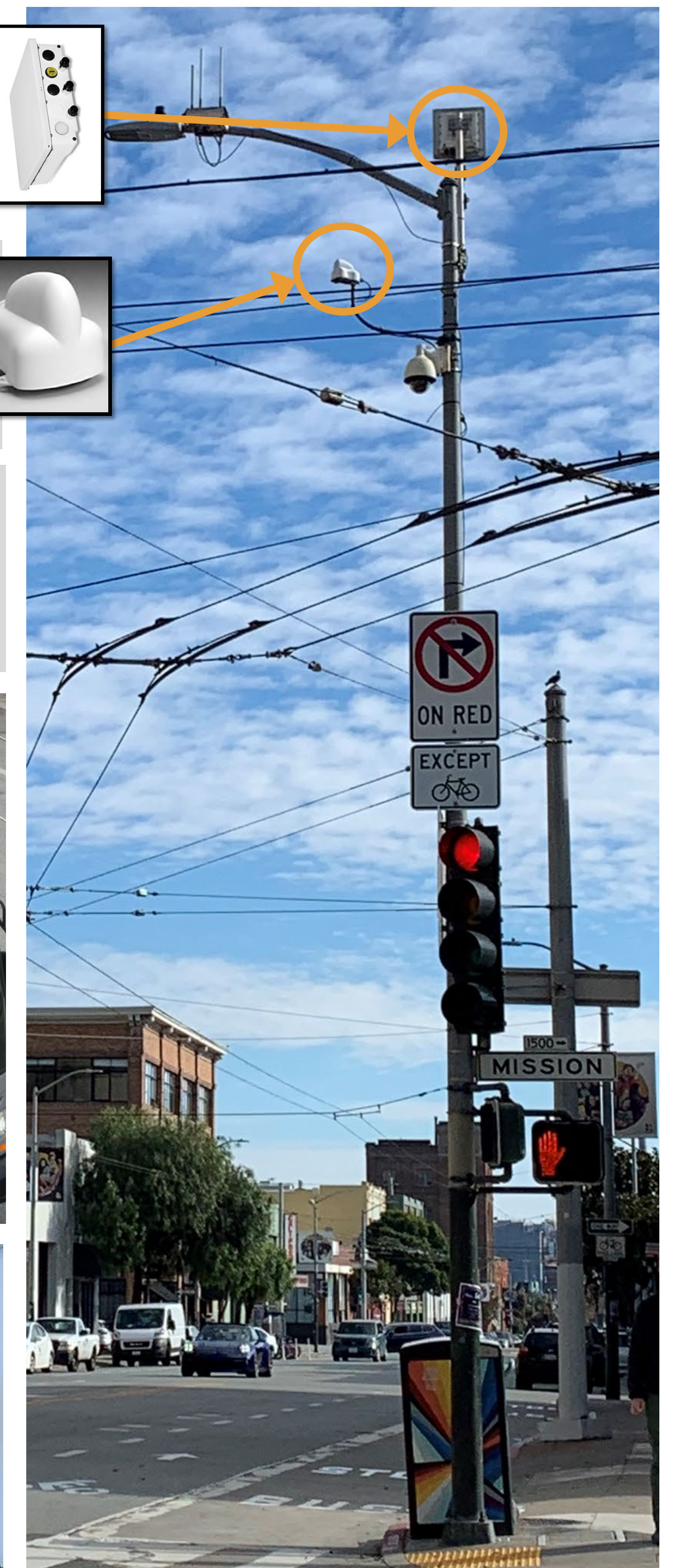
Wireless radio – connects traffic signals to the City network to allow for remote monitoring



GPS Receiver – receives the request from the bus and passes it on to the traffic controller



TPS Emitter – Sends the location of the bus to the intersection receiver to request TSP



Traffic Signal Controller – Controls the green, yellow and red lights. Receives the request for TSP and modifies the signal timing, when possible, to reduce bus delays.