



SFMTA

March 5, 2021

Engineering Public Hearing

[SFMTA.com/ENGHearing](https://www.sfmta.com/ENGHearing)

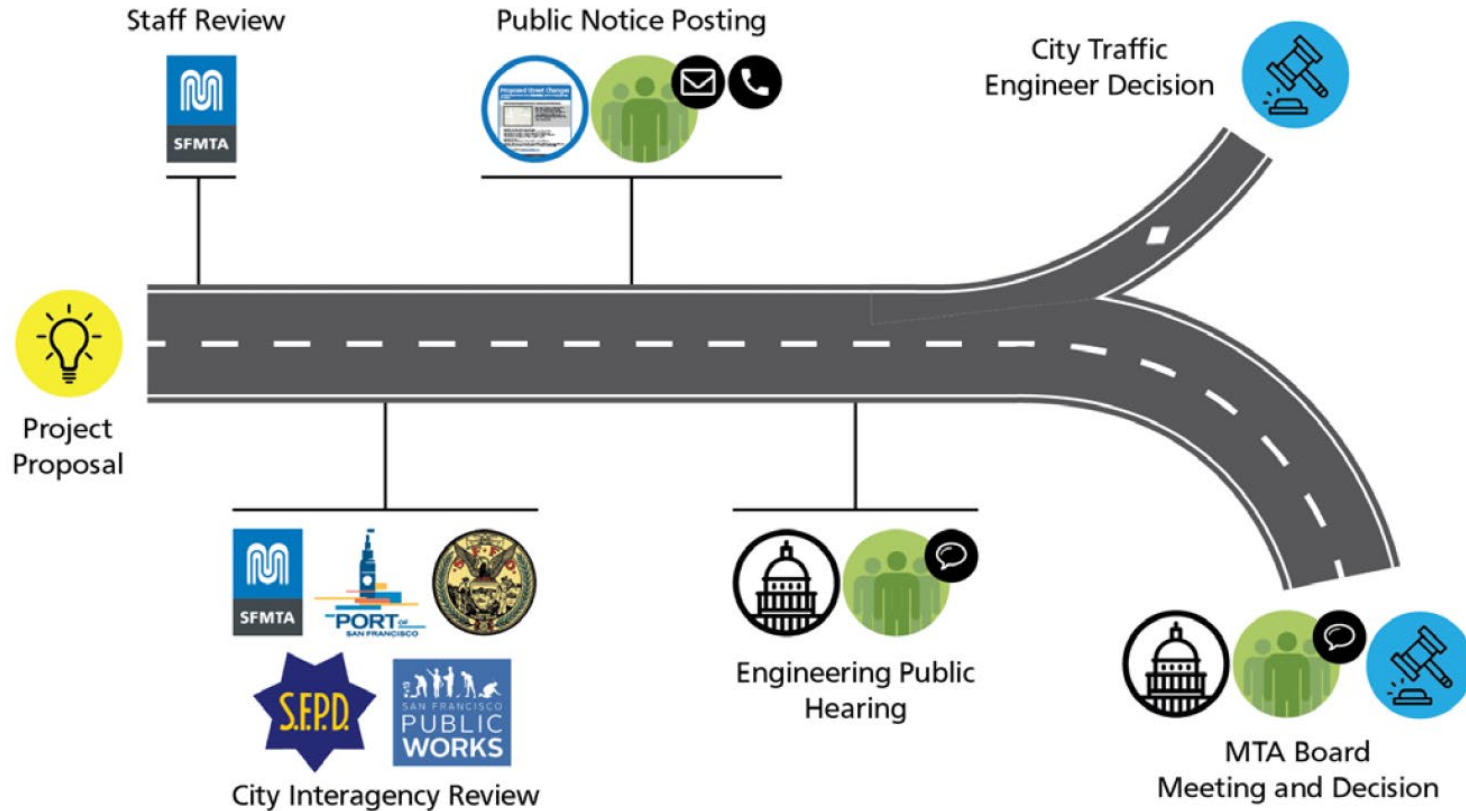
Conference Line: 888-398-2342

Participation Code: 8647385

[SFMTA.com/ENGSpeakerCard](https://www.sfmta.com/ENGSpeakerCard)

Proposed Street Changes

How does a proposed street change get approved?



<https://www.sfmta.com/committees/engineering-public-hearings>


Public Hearing Decision Posting

Results will be posted by
5 PM next Friday

<https://www.sfmta.com/calendar/engineering-public-hearing-meeting-march-5-2021>

Referenced Materials

Engineering Public Hearing Agenda, July 17, 2020

 [Engineering Public Hearing Agenda, July 17, 2020](#)

Engineering Public Hearing Results, July 17, 2020

 [Engineering Public Hearing Results, July 17, 2020](#)





SFMTA

March 5, 2021

Engineering Public Hearing

[SFMTA.com/ENGHearing](https://www.sfmta.com/ENGHearing)

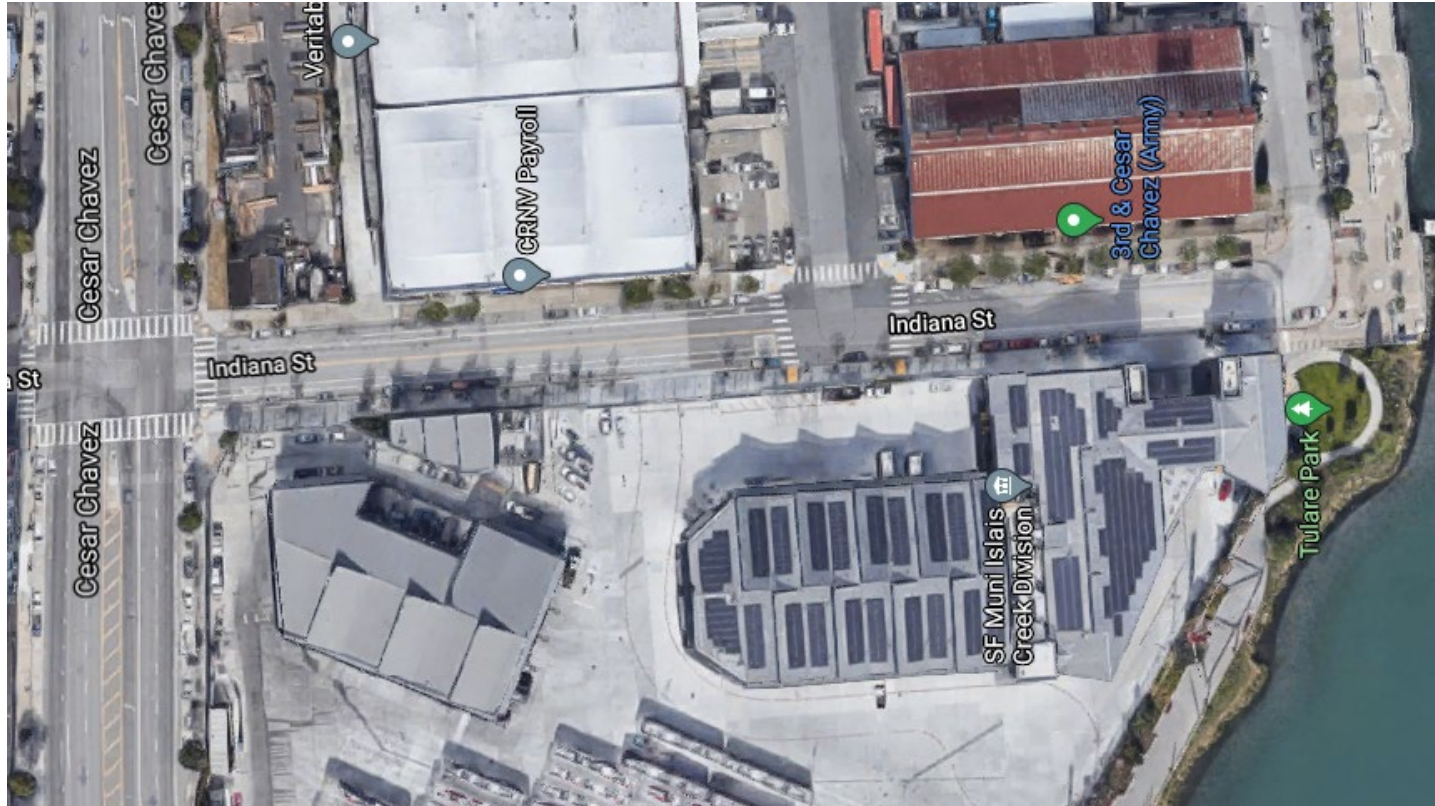
Conference Line: 888-398-2342

Participation Code: 8647385

[SFMTA.com/ENGSpeakerCard](https://www.sfmta.com/ENGSpeakerCard)

1. RESCIND – 2-HOUR PARKING, 9 AM TO 6 PM

Indiana Street, both sides, from Cesar Chavez to Tulare Street (Requires MTAB Approval)
(Supervisor District 10) Becca Homa, becca.homa@sfmta.com



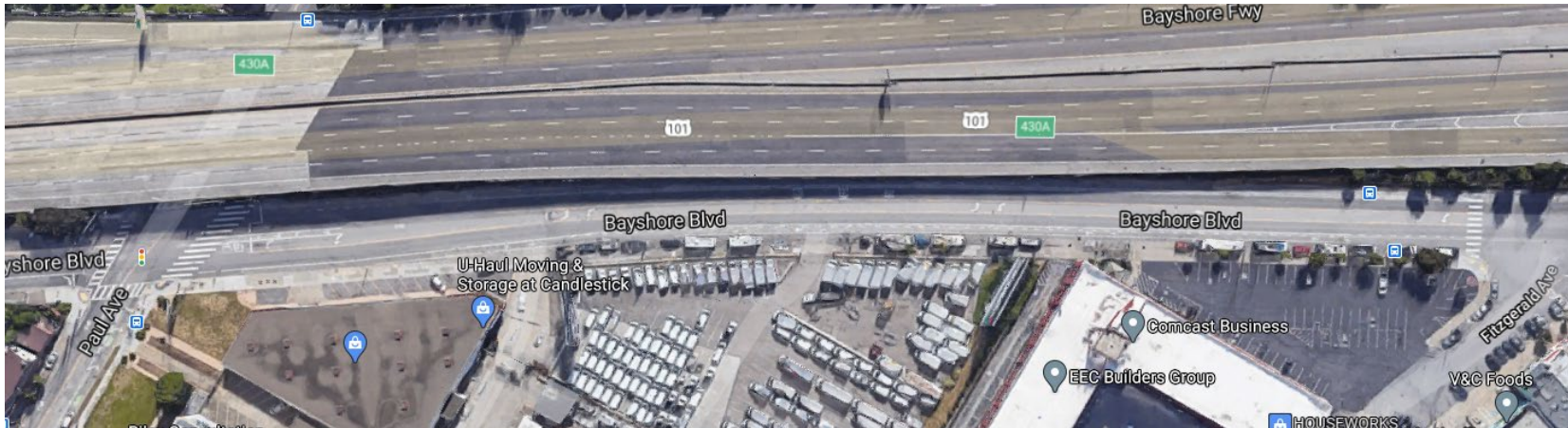
Conference Line: **1-888-398-2342** (use participation code: 8647385)

To comment on an item, press "1" and then "0" when prompted.

2. ESTABLISH – GENERAL METERED PARKING, 4-HOUR TIME LIMIT, 9 AM TO 6 PM, MONDAY THROUGH SATURDAY

Bayshore Boulevard, east side, between Fitzgerald Avenue and Paul Avenue
(Requires MTAB Approval)

Fitzgerald Avenue, south side, from Bayshore Blvd to 90 feet easterly
(Requires MTAB Approval) (Supervisor District 10) Becca Homa, becca.homa@sfmta.com



Conference Line: **1-888-398-2342** (use participation code: 8647385)

To comment on an item, press "1" and then "0" when prompted.

4. ESTABLISH – SPEED CUSHIONS

Lower Great Highway, between Kirkham Street and Lawton Street (1 speed cushion) (City Traffic Engineer Approvable) (Supervisor District 4) Maurice Grownney, maurice.grownney@sfmta.com



Conference Line: **1-888-398-2342** (use participation code: 8647385)

To comment on an item, press "1" and then "0" when prompted.

5. ESTABLISH – SPEED CUSHIONS

Revere Avenue, between Ingalls Street and Jennings Street (2 speed cushions) (City Traffic Engineer Approvable)

(Supervisor District 10) Shahram Shariati, Shahram.shariati@sfmta.com

STREET VIEW - FACING EAST



Conference Line: **1-888-398-2342** (use participation code: 8647385)

To comment on an item, press "1" and then "0" when prompted.

6. ESTABLISH – SPEED HUMPS

10th Avenue, between Noriega Street and Moraga Street (2 Speed Humps) (City Traffic Engineer Approvable) (Supervisor District 7) John Garzee, john.garzee@sfmta.com



Conference Line: **1-888-398-2342** (use participation code: 8647385)

To comment on an item, press "1" and then "0" when prompted.

7. ESTABLISH – SPEED HUMPS

10th Avenue, between Irving Street and Judah Street (2 Speed Humps) (City Traffic Engineer Approvable)(Supervisor District 5) John Garzee, john.garzee@sfmta.com



10th Ave looking north towards Irving from Judah

Conference Line: **1-888-398-2342** (use participation code: 8647385)

To comment on an item, press "1" and then "0" when prompted.

8. ESTABLISH – SPEED HUMPS

28th Avenue, between Cabrillo Street and Fulton Street (2 Speed Humps) (City Traffic Engineer Approvable)(Supervisor District 1) John Garzee, john.garzee@sfmta.com



28th Ave facing south from Cabrillo towards Fulton

Conference Line: **1-888-398-2342** (use participation code: 8647385)

To comment on an item, press "1" and then "0" when prompted.

9. ESTABLISH – SPEED HUMPS

Idora Avenue, between Laguna Honda Boulevard and Garcia Avenue (2 speed humps) (City Traffic Engineer Approvable) (Supervisor District 7) [Alison Mathews, alison.mathews@sfmta.com](mailto:alison.mathews@sfmta.com)

Street View of Idora Avenue Westbound at Laguna Honda Boulevard



Conference Line: **1-888-398-2342** (use participation code: 8647385)

To comment on an item, press "1" and then "0" when prompted.

10. ESTABLISH – SPEED HUMPS

19th Street, between Dolores Street and Guerrero Street (2 speed humps) (City Traffic Engineer Approvable)(Supervisor District 8) Alison Mathews, alison.mathews@sfmta.com

View of 19th Street Eastbound at Dolores Street



Conference Line: **1-888-398-2342** (use participation code: 8647385)

To comment on an item, press "1" and then "0" when prompted.

11. ESTABLISH – SPEED HUMPS

Divisadero Street, between 14th Street and Duboce Avenue (2 speed humps) (City Traffic Engineer Approvable) (Supervisor District 8) Pallavi Panyam, pallavi.panyam@sfmta.com



Conference Line: **1-888-398-2342** (use participation code: 8647385)

To comment on an item, press "1" and then "0" when prompted.

12. ESTABLISH – SPEED CUSHION

Lawton Street, between 11th Avenue and 12th Avenue (1 speed cushion) (City Traffic Engineer Approvable)(Supervisor District 7) Pallavi Panyam, pallavi.panyam@sfmta.com



Conference Line: **1-888-398-2342** (use participation code: 8647385)

To comment on an item, press "1" and then "0" when prompted.

13. ESTABLISH – SPEED HUMP

Guttenberg Street, between Mission Street and Morse Street (1 speed hump) (City Traffic Engineer Approvable)(Supervisor District 11) Mark Manalo, mark.manalo@sfmta.com

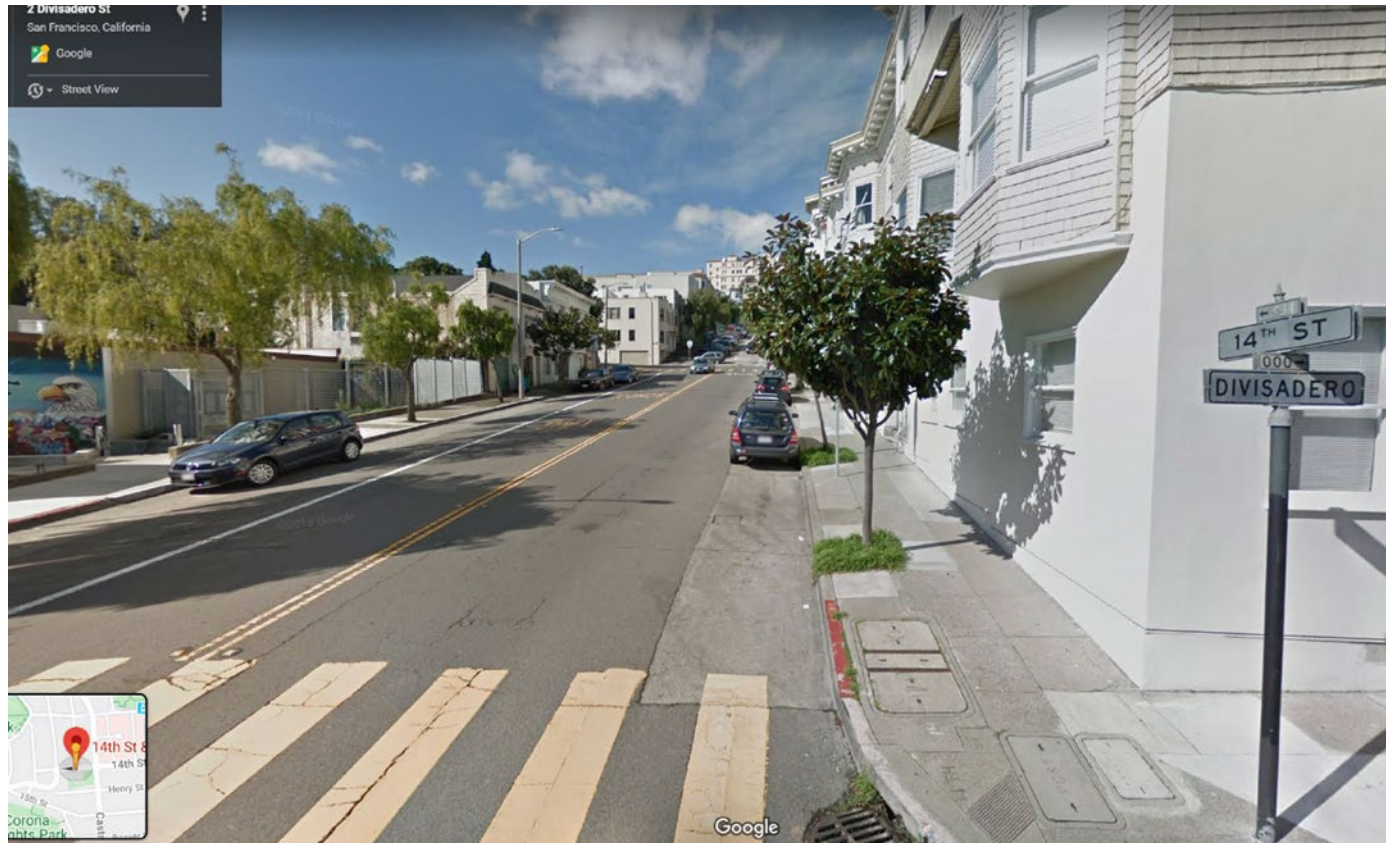


Conference Line: **1-888-398-2342** (use participation code: 8647385)

To comment on an item, press "1" and then "0" when prompted.

14. ESTABLISH – SPEED CUSHION

14th Street, between Alpine Terrace and Divisadero Street (1 speed cushion) (City Traffic Engineer Approvable)(Supervisor District 8) Mark Manalo, mark.manalo@sfmta.com



Conference Line: **1-888-398-2342** (use participation code: 8647385)

To comment on an item, press "1" and then "0" when prompted.

15. ESTABLISH – SPEED CUSHION

14th Street, between Castro Street and Divisadero Street (1 speed cushion) (City Traffic Engineer Approvable)(Supervisor District 8) Mark Manalo, mark.manalo@sfmta.com



Conference Line: **1-888-398-2342** (use participation code: 8647385)

To comment on an item, press "1" and then "0" when prompted.

16. ESTABLISH – SPEED HUMP

18th Avenue, between Ulloa Street and Vicente Street (2 speed humps) (City Traffic Engineer Approvable)(Supervisor District 7) John Garzee, john.garzee@sfmta.com

18th Ave & Vicente St: Looking North towards Ulloa St



Conference Line: **1-888-398-2342** (use participation code: 8647385)

To comment on an item, press "1" and then "0" when prompted.

17. ESTABLISH – SPEED TABLES

Hancock Street between Noe Street and Sanchez Street (2 speed tables) (City Traffic Engineer Approvable)(Supervisor District 8) Alison Mathews, alison.mathews@sfmta.com

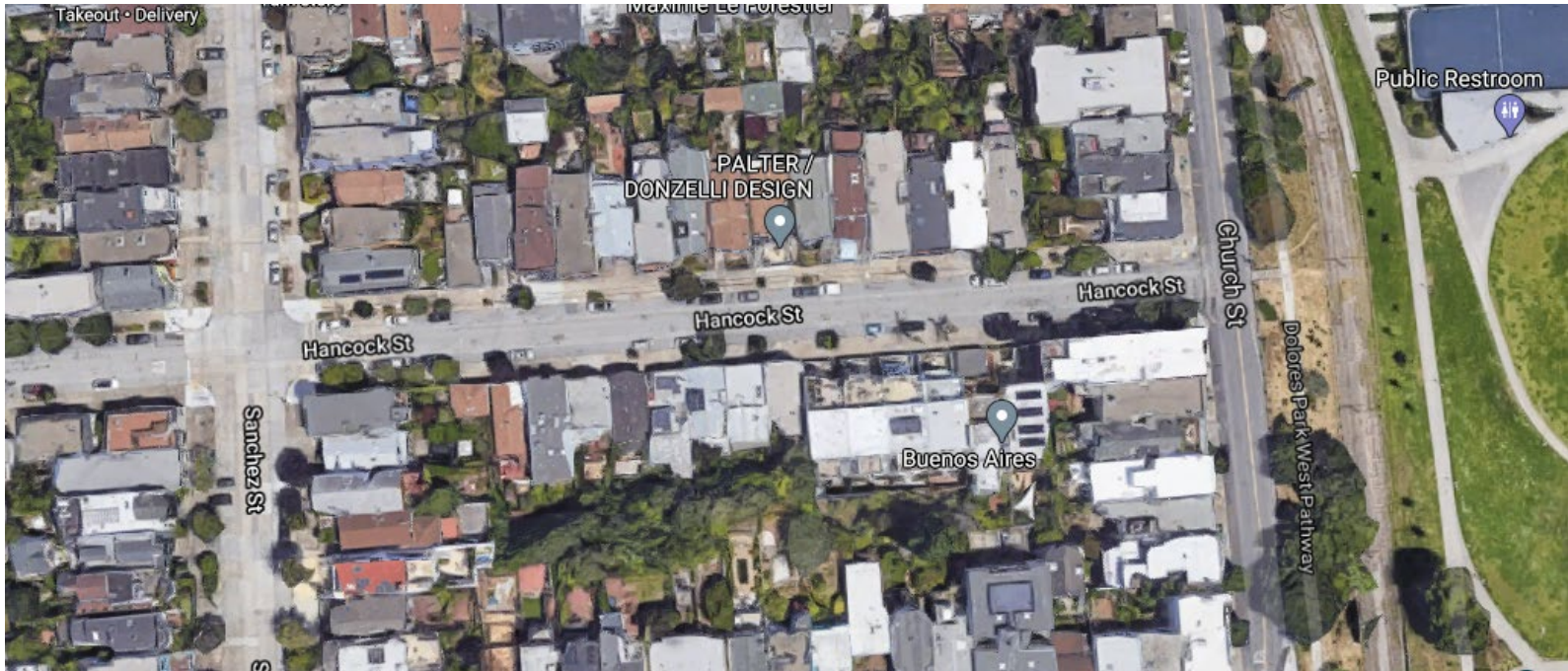


Conference Line: **1-888-398-2342** (use participation code: 8647385)

To comment on an item, press "1" and then "0" when prompted.

18. ESTABLISH – SPEED HUMP

Hancock Street between Church Street and Sanchez Street (2 speed tables) (City Traffic Engineer Approvable)(Supervisor District 8) Alison Mathews, alison.mathews@sfmta.com



Conference Line: **1-888-398-2342** (use participation code: 8647385)

To comment on an item, press "1" and then "0" when prompted.

19. ESTABLISH – SPEED HUMPS

Jersey Street between Castro Street and Diamond Street (2 speed humps) (City Traffic Engineer Approvable) (Supervisor District 8) Pallavi Panyam, pallavi.panyam@sfmta.com



Streetview facing west from Castro St

Conference Line: **1-888-398-2342** (use participation code: 8647385)

To comment on an item, press "1" and then "0" when prompted.

20. ESTABLISH – SPEED HUMPS

Chestnut Street, between Mason Street and Powell Street (2 Speed Humps) (City Traffic Engineer Approvable)(Supervisor District 1) John Garzee, john.garzee@sfmta.com



Chestnut St looking East towards Powell from Mason

Conference Line: **1-888-398-2342** (use participation code: 8647385)

To comment on an item, press "1" and then "0" when prompted.

21. ESTABLISH – SPEED CUSHIONS

23rd Street, between Noe Street and Sanchez Street (2 Speed cushions) (City Traffic Engineer Approvable)(Supervisor District 5) John Garzee, john.garzee@sfmta.com



23rd St looking West towards Sanchez from Noe

Conference Line: **1-888-398-2342** (use participation code: 8647385)

To comment on an item, press "1" and then "0" when prompted.

22. ESTABLISH – SPEED HUMPS

28th Street between Church Street and Sanchez Street (City Traffic Engineer Approvable)
(2 Speed Humps) (Supervisor District 8) Mark Manalo, mark.manalo@sfmta.com



Conference Line: **1-888-398-2342** (use participation code: 8647385)

To comment on an item, press "1" and then "0" when prompted.

23. ESTABLISH – SPEED CUSHIONS

11th Avenue between Cabrillo Street and Fulton Street (2 Speed Cushions) (City Traffic Engineer Approvable)(Supervisor District 1) Mark Manalo, mark.manalo@sfmta.com



Conference Line: **1-888-398-2342** (use participation code: 8647385)

To comment on an item, press "1" and then "0" when prompted.

24. ESTABLISH – SPEED CUSHIONS

Flood Avenue, between Foerster Street and Genessee Street (2 three-lump cushions) (City Traffic Engineer Approvable)(Supervisor District 7) Jeff Banks, jeffrey.banks@sfmta.com



Conference Line: **1-888-398-2342** (use participation code: 8647385)

To comment on an item, press "1" and then "0" when prompted.

25. ESTABLISH – SPEED CUSHION

Loma Vista Terrace, between Masonic Avenue and Roosevelt Way (1 three-lump cushion) (City Traffic Engineer Approvable)(Supervisor District 8) Jeff Banks, jeffrey.banks@sfmta.com



Conference Line: **1-888-398-2342** (use participation code: 8647385)

To comment on an item, press "1" and then "0" when prompted.

26. ESTABLISH – SPEED CUSHION

Palmetto Avenue between Alemany Boulevard and Chester Avenue (1 three-lump cushion) (City Traffic Engineer Approvable)(Supervisor District 7) Alison Mathews, alison.mathews@sfmta.com

Street View of Palmetto Avenue facing east at Chester Avenue



Conference Line: **1-888-398-2342** (use participation code: 8647385)

To comment on an item, press "1" and then "0" when prompted.

27. ESTABLISH – SPEED CUSHIONS

Palou Street between Barneveld Avenue and Industrial Street (3 three-lump cushions) (City Traffic Engineer Approvable)(Supervisor District 10) Pallavi Panyam, pallavi.panyam@sfmta.com



Streetview facing East from Barneveld Ave

Conference Line: **1-888-398-2342** (use participation code: 8647385)

To comment on an item, press "1" and then "0" when prompted.

28. ESTABLISH – SPEED CUSHIONS

Upland Drive between Manor Drive and North Gate Drive (2 three-lump cushions) (City Traffic Engineer Approvable)(Supervisor District 7) Pallavi Panyam, pallavi.panyam@sfmta.com



Streetview facing East from Manor Drive

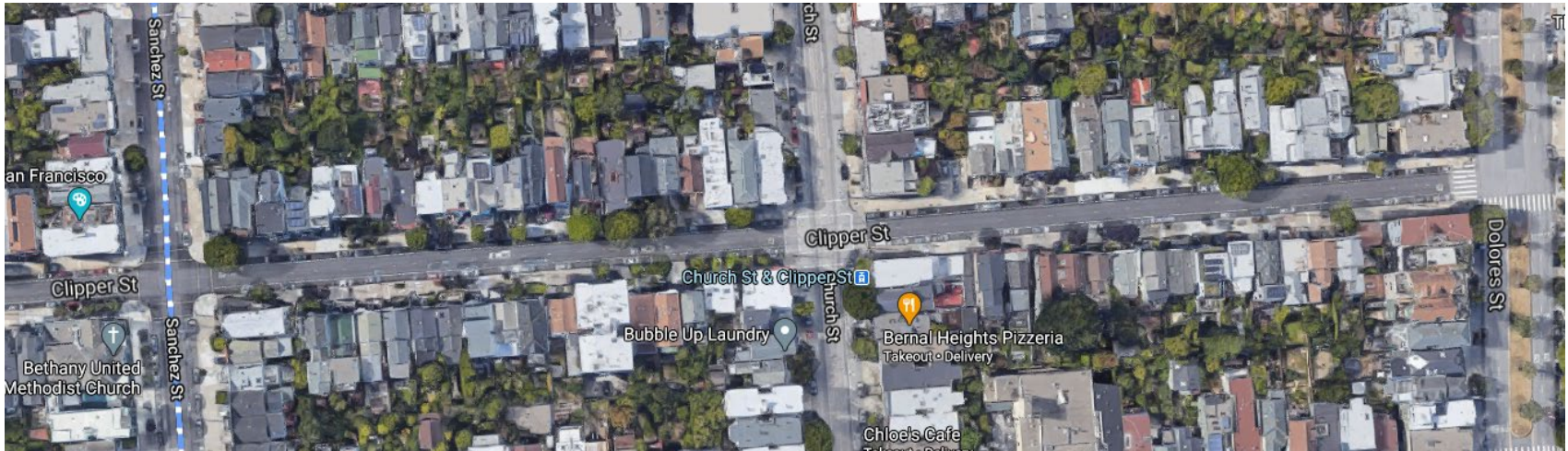
Conference Line: **1-888-398-2342** (use participation code: 8647385)

To comment on an item, press "1" and then "0" when prompted.

29. ESTABLISH – SPEED CUSHIONS

Clipper Street, between Dolores Street and Church Street (2 3-lump cushions) (City Traffic Engineer Approvable)

Clipper Street, between Church Street and Sanchez Street (2 3-lump cushions) (City Traffic Engineer Approvable)(Supervisor District 8) Daniel Carr, daniel.carr@sfmta.com



Conference Line: **1-888-398-2342** (use participation code: 8647385)

To comment on an item, press "1" and then "0" when prompted.

30. ESTABLISH – SPEED CUSHIONS

A. Cortland Avenue, between Mission Street and Coleridge Street (1 Speed Cushion)
(City Traffic Engineer Approvable)

B. Cortland Avenue, between Prospect Avenue and Winfield Street (1 Speed Cushion)
(City Traffic Engineer Approvable)

C. Cortland Avenue, between Bronte Street and Bradford Street (1 Speed Cushion)
(City Traffic Engineer Approvable)

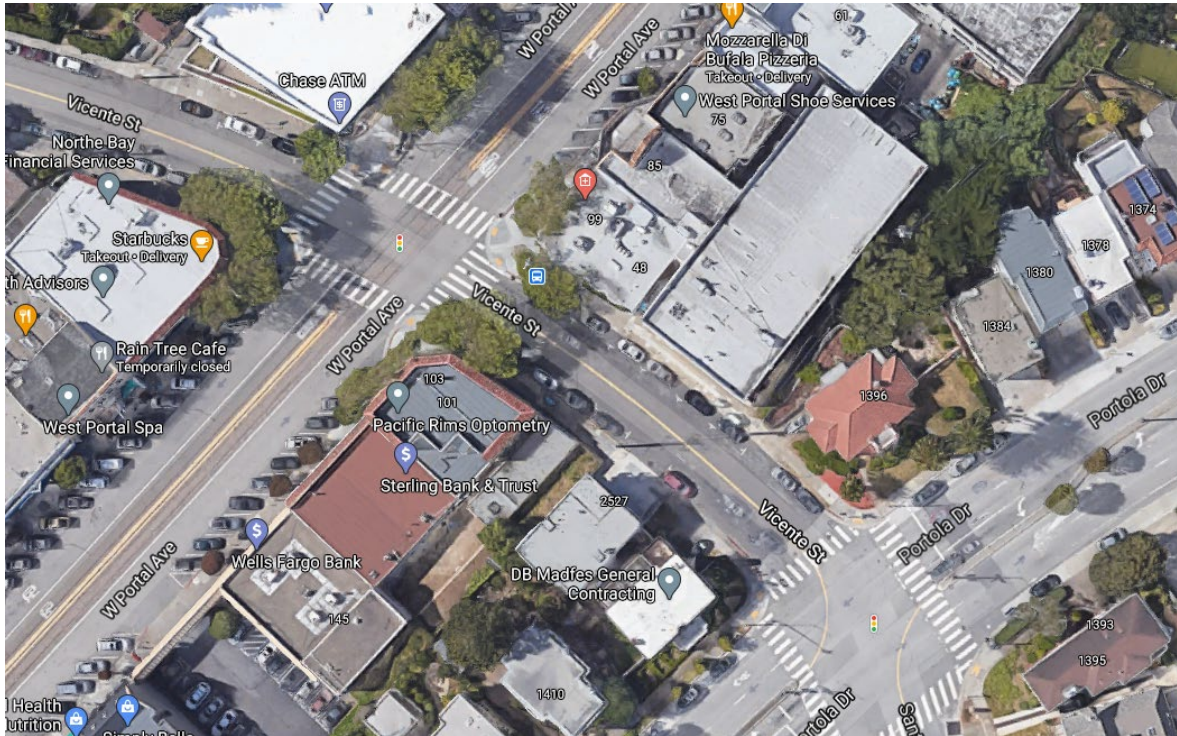
D. Cortland Avenue, between Peralta Avenue and Hilton Street (1 Speed Cushion)
(City Traffic Engineer Approvable)(Supervisor District 9) Daniel Carr,
daniel.carr@sfmta.com



Conference Line: **1-888-398-2342** (use participation code: 8647385)

To comment on an item, press "1" and then "0" when prompted.

- 31(a). ESTABLISH - CLASS II BIKEWAY (BIKE LANE)
Vicente Street, southbound, from West Portal to Portola (Requires MTAB Approval)
- 31(b). ESTABLISH - CLASS III BIKEWAY
Vicente Street, northbound, from West Portal to Portola (City Traffic Engineer Approvable)
- 31(c). ESTABLISH - TOW AWAY NO PARKING ANY TIME
Vicente Street, east side, from Portola 23 feet northerly (Requires MTAB Approval)
(Supervisor District 7) Jonathan.Chimento@sfmta.com



Conference Line: **1-888-398-2342** (use participation code: 8647385)
To comment on an item, press "1" and then "0" when prompted.

32(a). ESTABLISH – GENERAL METERED PARKING, NO TIME LIMIT, 9 AM TO 6 PM
MONDAY THROUGH SATURDAY

Alameda Street, both sides, from Utah Street, to San Bruno Avenue
(Requires MTAB Approval)

32(b). ESTABLISH – RED ZONE

Alameda Street, south side from San Bruno Avenue to 15 feet east.

(City Traffic Engineer Approvable) (Supervisor District 10) Becca Homa, becca.homa@sfmta.com



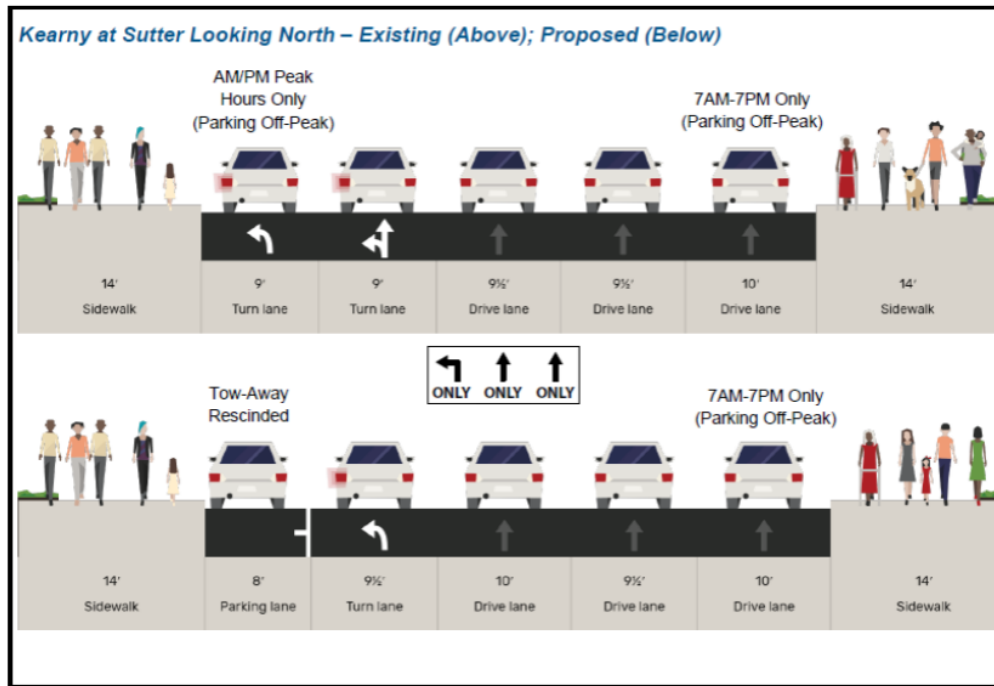
Conference Line: **1-888-398-2342** (use participation code: 8647385)

To comment on an item, press "1" and then "0" when prompted.

33(a). **RESCIND - TOW AWAY NO STOPPING 7AM-9AM and 3PM-7PM**
Kearny Street, west side, from Geary Street to Sutter Street (Requires MTAB Approval)

33(b). **ESTABLISH - LEFT LANE MUST TURN LEFT**
Kearny Street, northbound, at Sutter Street (City Traffic Engineer Approvable)

33(c). **ESTABLISH - RED ZONE**
Sutter Street, south side, from Kearny Street to 28 feet westerly
(extends existing red zone by 10 feet) (Requires MTAB Approval)
(Supervisor District 3) Edgar Orozco, edgar.orozco@sfmta.com



Conference Line: **1-888-398-2342** (use participation code: 8647385)

To comment on an item, press "1" and then "0" when prompted.

Public Hearing Decision Posting

Results will be posted by
5 PM next Friday

<https://www.sfmta.com/calendar/engineering-public-hearing-meeting-march-5-2021>

Referenced Materials

Engineering Public Hearing Agenda, July 17, 2020

 [Engineering Public Hearing Agenda, July 17, 2020](#)

Engineering Public Hearing Results, July 17, 2020

 [Engineering Public Hearing Results, July 17, 2020](#)

