



SFMTA

# October 2, 2020

# Engineering Public Hearing

<https://meet.sfmta.com/meetings/ZN6KJBHY>

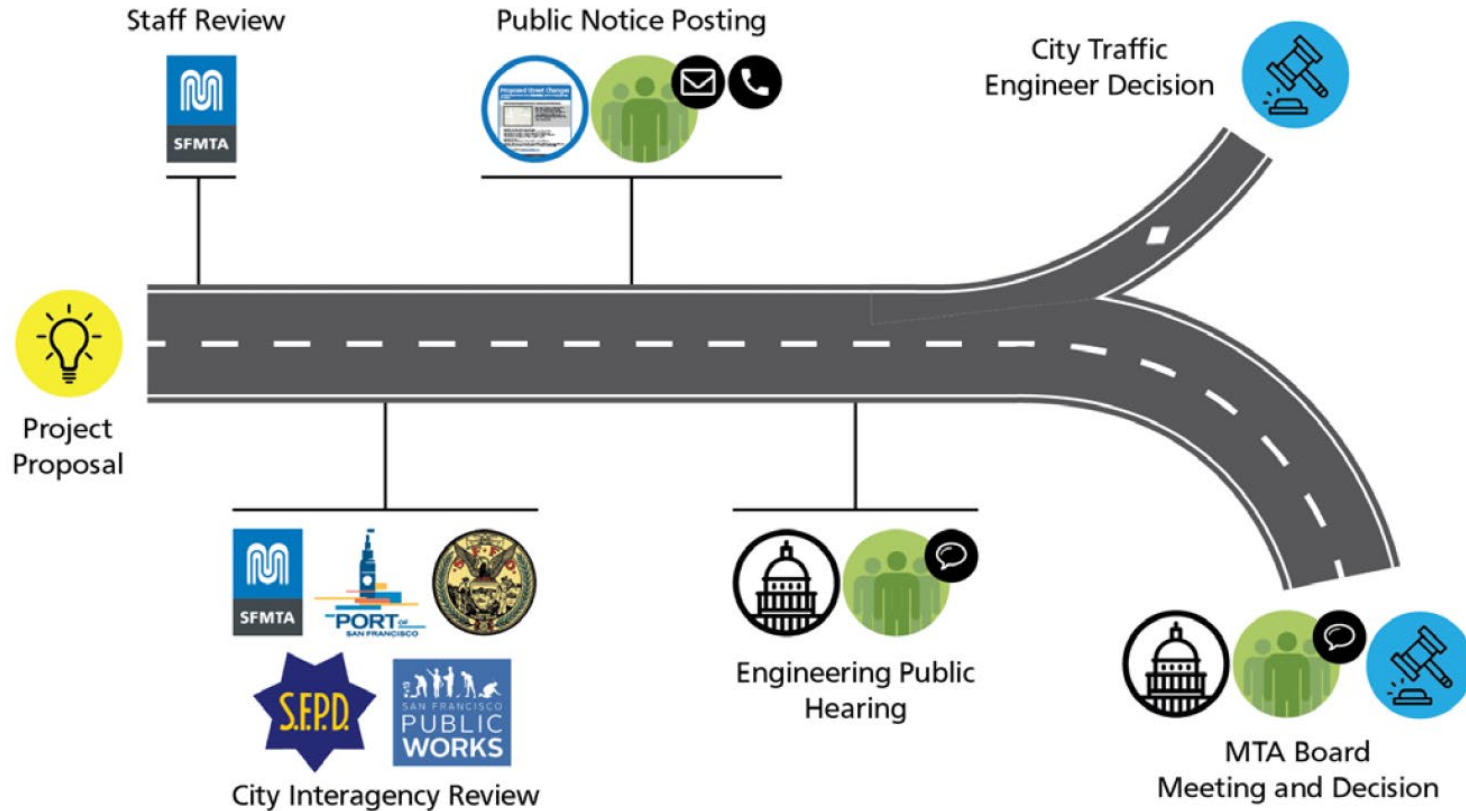
Conference Line: 888-808-6929

Participation Code: 9961164

[SFMTA.com/ENGSpeakerCard](https://sfmta.com/ENGSpeakerCard)

# Proposed Street Changes

How does a proposed street change get approved?



<https://www.sfmta.com/committees/engineering-public-hearings>


# Public Hearing Decision Posting

Results will be posted by  
5 PM next Friday

<https://www.sfmta.com/calendar/engineering-public-hearing-meeting-october-2-2020>

## Referenced Materials

Engineering Public Hearing Agenda, July 17, 2020

 [Engineering Public Hearing Agenda, July 17, 2020](#)

Engineering Public Hearing Results, July 17, 2020

 [Engineering Public Hearing Results, July 17, 2020](#)





SFMTA

# October 2, 2020

# Engineering Public Hearing

<https://meet.sfmta.com/meetings/ZN6KJBHY>

Conference Line: 888-808-6929

Participation Code: 9961164

[SFMTA.com/ENGSpeakerCard](https://sfmta.com/ENGSpeakerCard)

## 1. ESTABLISH - STOP SIGNS

Mountain Spring Avenue, eastbound, at Twin Peaks Boulevard ◇

Raccoon Drive, westbound, at Twin Peaks Boulevard ◇

(Supervisor Districts 7 & 8) David Sindel, [david.Sindel@sfmta.com](mailto:david.Sindel@sfmta.com)



Conference Line: 1- 888-808-6929 (use participation code: 9961164)

To comment on an item, press "1" and then "0" when prompted.

## 2. ESTABLISH - STOP SIGN

Eddy Street, westbound, at St. Joseph's Avenue, stopping the stem of this T-intersection ◇

(Supervisor District 2) Amy Chun, [amy.chun@sfmta.com](mailto:amy.chun@sfmta.com)



Conference Line: 1- 888-808-6929 (use participation code: 9961164)

To comment on an item, press "1" and then "0" when prompted.

### 3. ESTABLISH – RED ZONE

Olympia Way, north side, from west Dellbrook Avenue curb line to 45 feet easterly (between crosswalks)

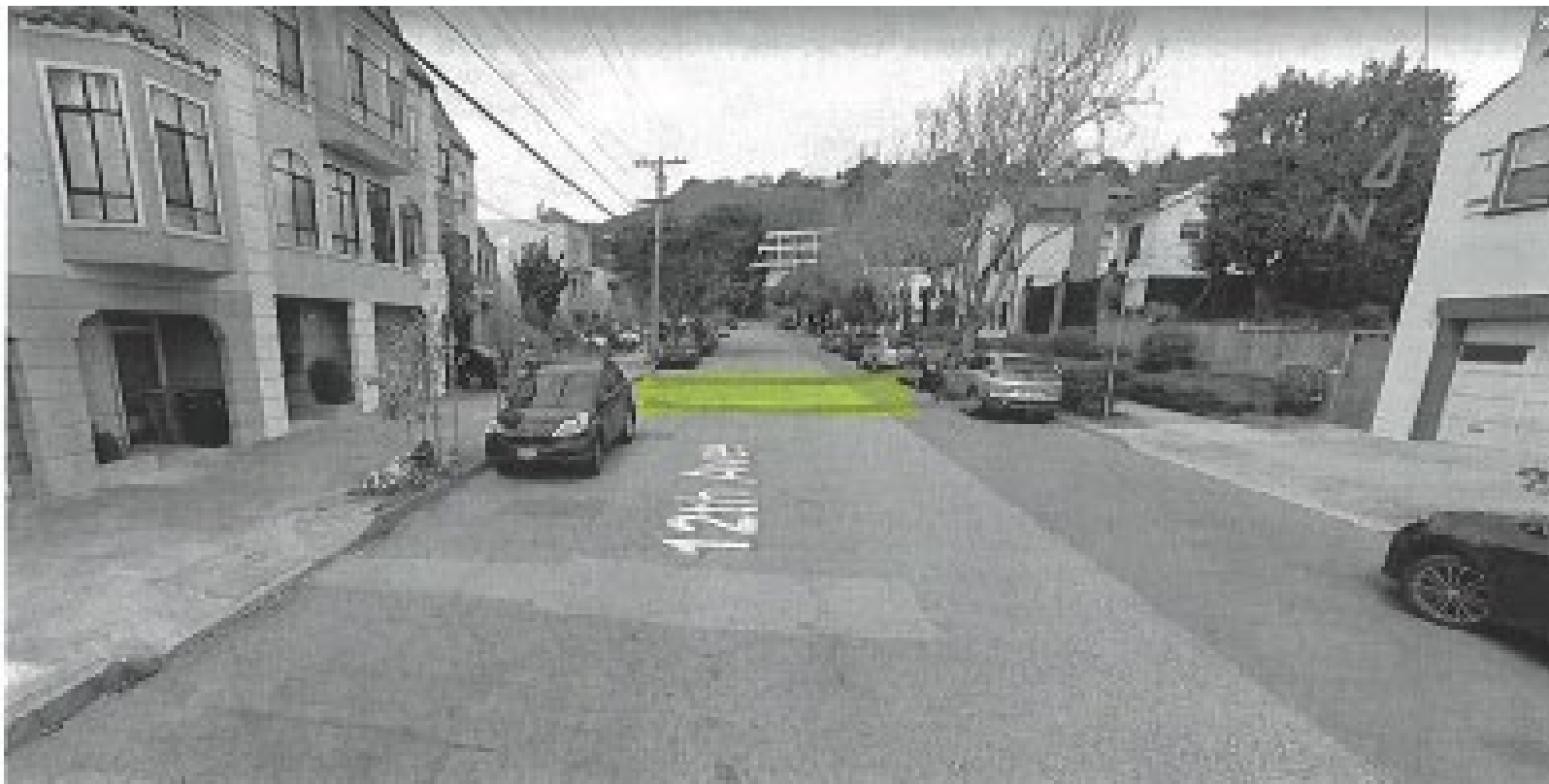
Olympia Way, north side, from Dellbrook Avenue to 20 feet easterly Olympia Way, south side, from Dellbrook Avenue to 15 feet westerly ◇  
(Supervisor District 7) Amy Chun, amy.chun@sfmta.com



Conference Line: 1- 888-808-6929 (use participation code: 9961164)

To comment on an item, press "1" and then "0" when prompted.

**4. ESTABLISH – SPEED HUMP 12th Avenue, between Taraval Street and Magellan Avenue (1 hump) ♦ (Supervisor District 7) Nick Carr, [nick.carr@sfmta.com](mailto:nick.carr@sfmta.com)**



Conference Line: 1- 888-808-6929 (use participation code: 9961164)

To comment on an item, press "1" and then "0" when prompted.



## 5. ESTABLISH - NO PARKING ANY TIME

Mansfield Street, west side, from Ina Court/La Grande Avenue to Burrows Street  
Burrows Street, south side, from the east property line of Mansfield Street westerly  
(Supervisor District 11) Jeffrey Tom, [jeffrey.tom@sfmta.com](mailto:jeffrey.tom@sfmta.com)



Conference Line: 1- 888-808-6929 (use participation code: 9961164)

To comment on an item, press "1" and then "0" when prompted.

**6. ESTABLISH - BUS ZONE** Cortland Avenue, north side, from 50 feet to 138 feet west of Bayshore Boulevard (removes 3 parking spaces and restricts parking in front of one driveway) (Supervisor District 9) [Kevin Shue, kevin.shue@sfmta.com](mailto:Kevin.Shue@sfmta.com)



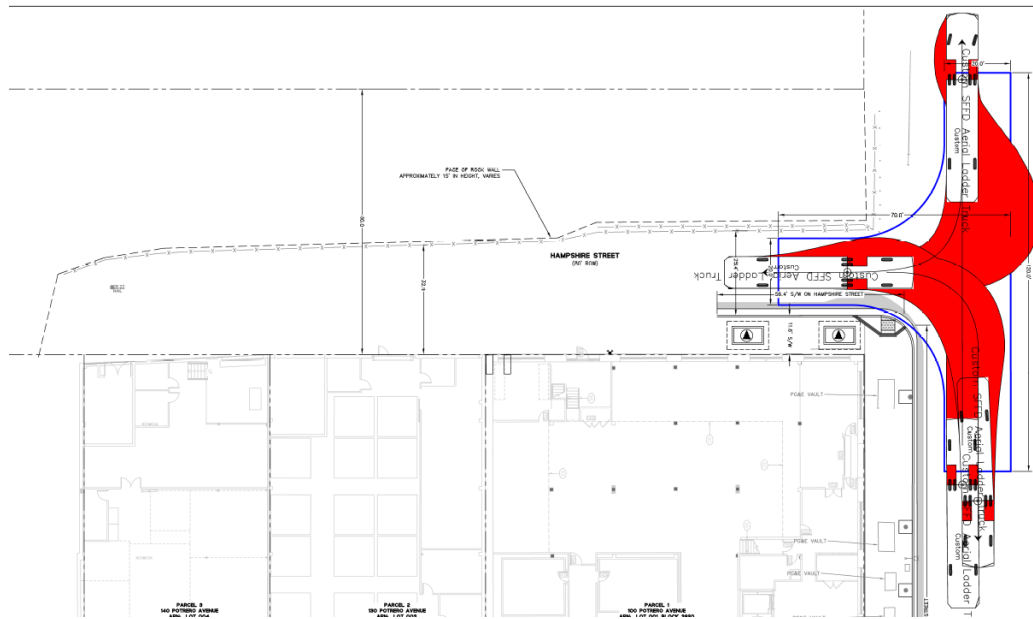
Conference Line: 1- 888-808-6929 (use participation code: 9961164)  
To comment on an item, press "1" and then "0" when prompted.

**7(a). ESTABLISH – TOW-AWAY, NO PARKING ANYTIME ESTABLISH – SIDEWALK WIDENING**

**Hampshire Street, east side, from Alameda Street to 55 feet southerly (sidewalk widening for new 11.7 feet sidewalk)**

**7(b).ESTABLISH – TOW-AWAY, NO PARKING ANYTIME**

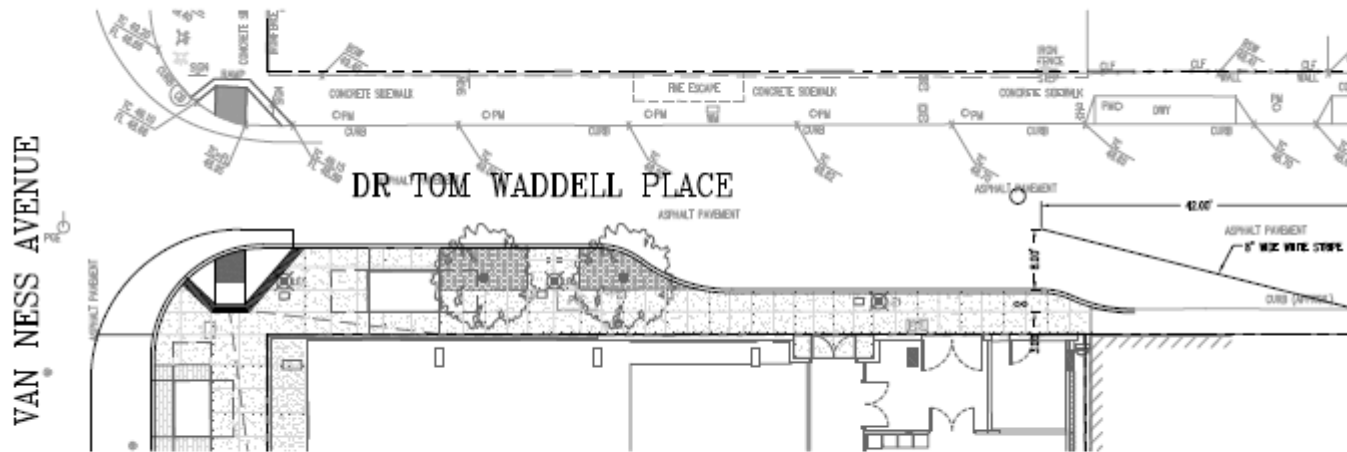
**Hampshire Street, west side, from Alameda Street to Hampshire's southern terminus (Supervisor District 10) Westley Myles, Westley.Myles@sfmta.com**



Conference Line: 1- 888-808-6929 (use participation code: 9961164)  
To comment on an item, press "1" and then "0" when prompted.

**8. ESTABLISH – TOW-AWAY NO STOPPING ANY TIME ESTABLISH - SIDEWALK WIDENING (3 feet and 6 feet)**

**Dr. Tom Waddell Place – north side, from Van Ness Avenue to 133 feet easterly. Removal of 7 metered parking spaces (#42, #40, #38, #36, #34, #32, and #30) due to sidewalk widening on south side of Dr. Tom Waddell Place. (Supervisor District 6)  
Westley Myles, [Westley.Myles@sfmta.com](mailto:Westley.Myles@sfmta.com)**



Conference Line: 1- 888-808-6929 (use participation code: 9961164)

To comment on an item, press "1" and then "0" when prompted.

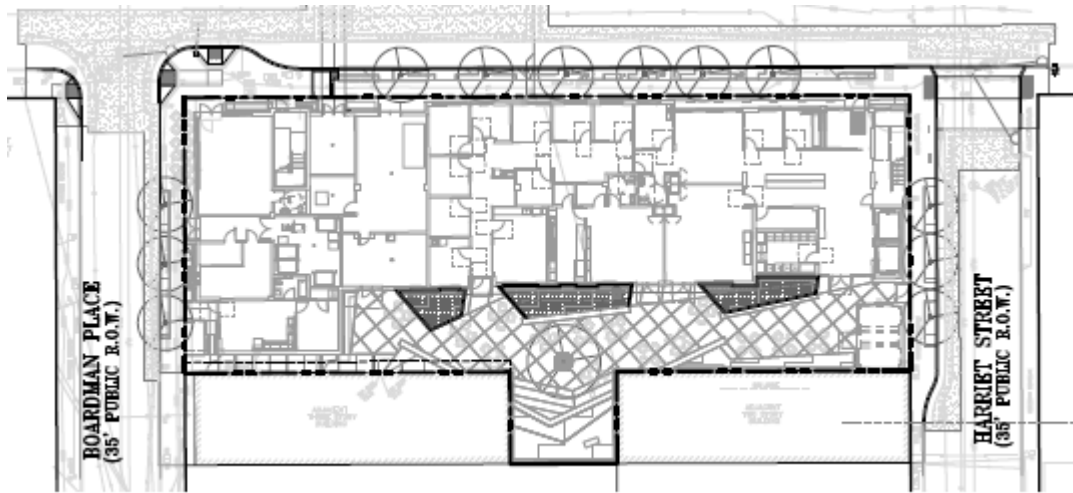


**9(a). ESTABLISH – TOW AWAY NO STOPPING ANYTIME ESTABLISH – SIDEWALK WIDENING**

Harriet Street – west side, Bryant Street to 90 feet southerly, (sidewalk widening for 3-foot wide bulb, removes 4 parking spaces)

Harriet Street – east side, Bryant Street to 90 feet southerly, (3 parking spaces removed due to sidewalk widening on west side of Harriet)

**9(b). ESTABLISH - RED ZONE ESTABLISH – SIDEWALK WIDENING** Bryant Street – south side, Boardman Place to 32 feet easterly, (sidewalk widening for 6-foot wide bulb, removes 1 metered parking space #835-G) (Supervisor District 6) Westley Myles, [Westley.Myles@sfmta.com](mailto:Westley.Myles@sfmta.com)



Conference Line: 1- 888-808-6929 (use participation code: 9961164)

To comment on an item, press "1" and then "0" when prompted.

# Public Hearing Decision Posting

Results will be posted by  
5 PM next Friday

<https://www.sfmta.com/calendar/engineering-public-hearing-meeting-october-2-2020>

## Referenced Materials

Engineering Public Hearing Agenda, July 17, 2020

 [Engineering Public Hearing Agenda, July 17, 2020](#)

Engineering Public Hearing Results, July 17, 2020

 [Engineering Public Hearing Results, July 17, 2020](#)

