



SFMTA

Municipal
Transportation
Agency

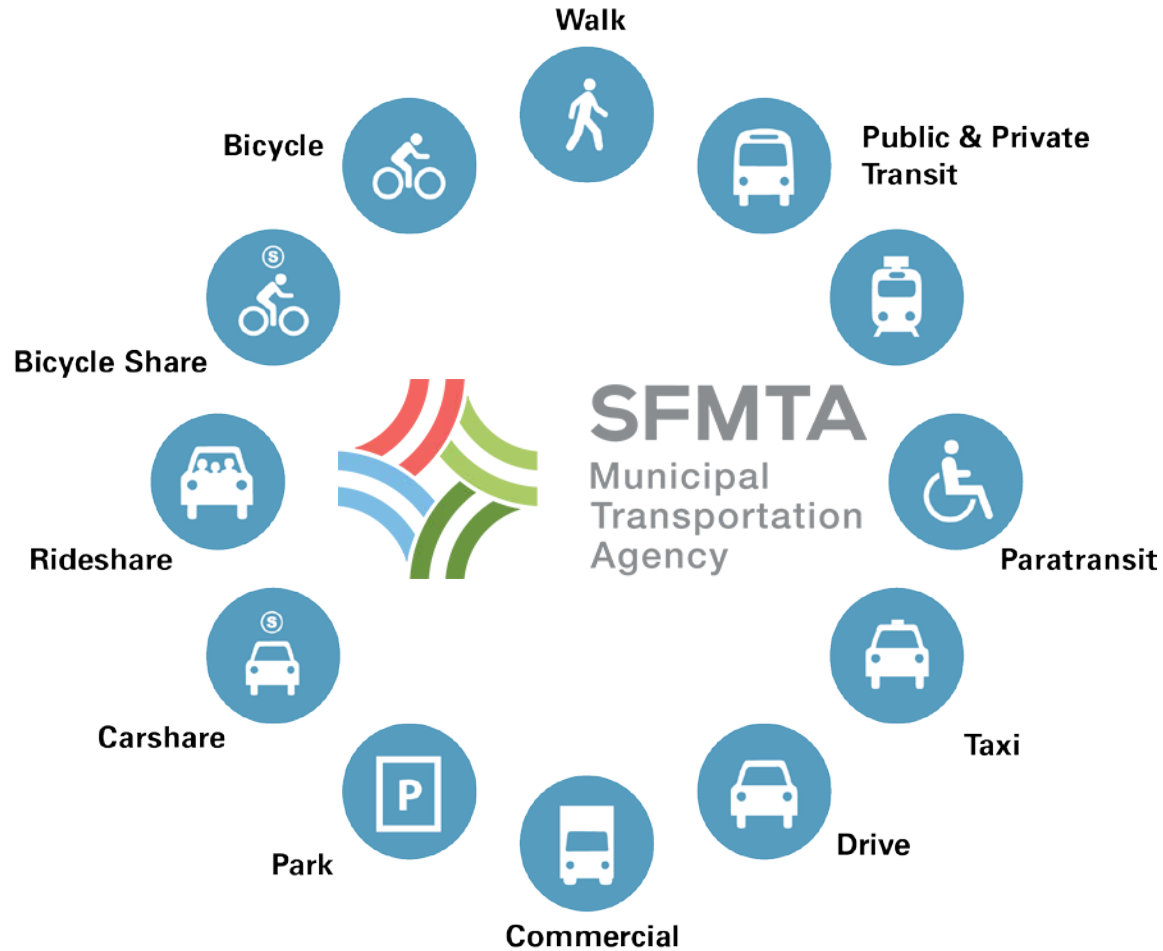
Balboa Park Station Area & Plaza Improvements

**Community Meeting
October 6, 2015**

Agenda

- What is SFMTA?
- Project Background and Objective
- Project Scope
 - Geneva Ave improvements and landscaping
 - Ocean Ave accessibility and signal upgrades
 - Ocean Ave/I-280 off-ramp crossing
 - Relocation of trolley poles
 - Installation of pedestrian scale lighting
 - Installation of wayfinding signs
 - Ocean Avenue/I-280 upgrades to train signal system
- Construction
 - Timeline
 - Logistics
 - Impacts

What is SFMTA ?



The San Francisco Municipal Transportation Agency (SFMTA) keeps the City moving.

Project Background & Objective









- The San Francisco Board of Supervisors adopted the Balboa Park Station Area Plan in 2009, which has served as a template for all development activities in the area
- In October 2012, the Balboa Park Station Capacity and Conceptual Engineering Study was completed by Jacobs Engineering to refine and advance the Balboa Park Station Area Plan from a vision to a reality, improving the area around the Balboa Park Station

OBJECTIVE: To implement safety, accessibility, and transit improvements around the Balboa Park Station to enhance the customer experience in one of the regions busiest multimodal facilities

Project Scope

Project Overview Map



-  Sidewalk Widening
-  Median Island Relocation and Landscaping
-  Red Transit Lanes
-  Pedestrian Lighting
-  Curb Ramp Upgrades
-  Trolley Pole Relocation off J/K Walkway
-  Flashing Beacons
-  Traffic & Train Signal Upgrades

Geneva Ave Improvements



New Right Turn Pockets
on westbound Geneva Ave
at San Jose Ave and eastbound Geneva
Ave at I-280-S on-ramp



New Transit Lanes
on westbound Geneva Ave
between Delano Ave and I-280-N
on-ramp



Remove Stop
at Delano Ave inbound and
outbound



New Left Turn Pocket
on westbound Geneva Ave onto
I-280-S on-ramp

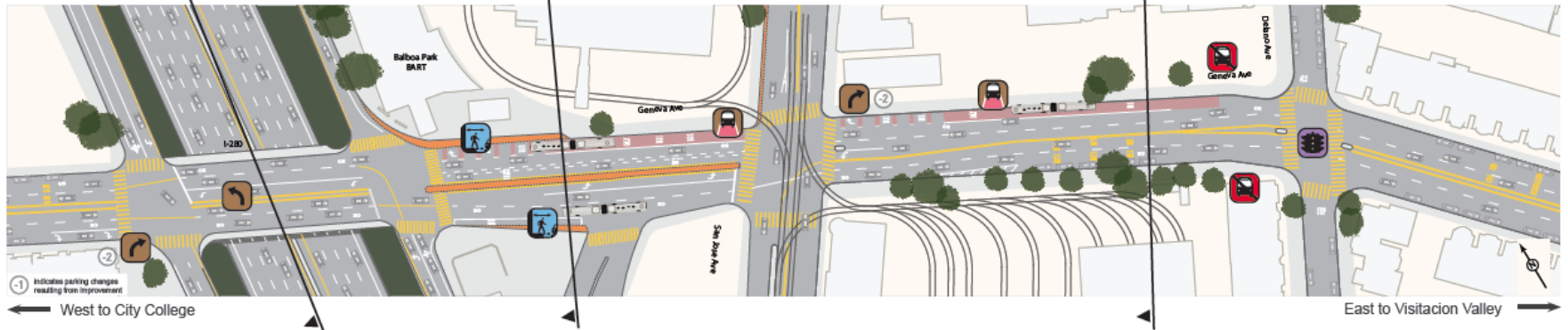
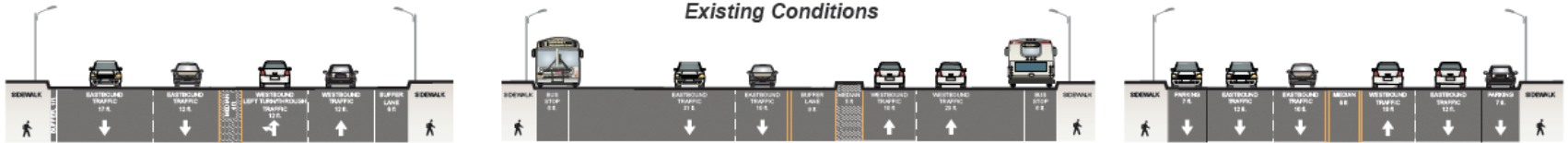


Widen Sidewalks
at I-280 on/off-ramp

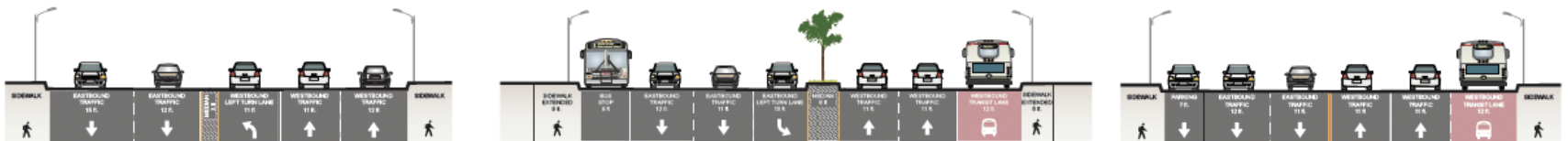


New Traffic Signal
at Delano Ave
(funded through a separate project)

Existing Conditions



Proposal Conditions



Geneva Ave Water Wise Landscape Plan



Low shrub: Yucca
Filamentosa
'Color Guard'
(2.5' tall)



1' Maintenance Strip &
Gravel Mulch



GENEVA AVE



Tree: Washingtonia robusta
California Fan palm (24" Box)



Low shrub: Phormium
'Amazing Red' (2' tall)

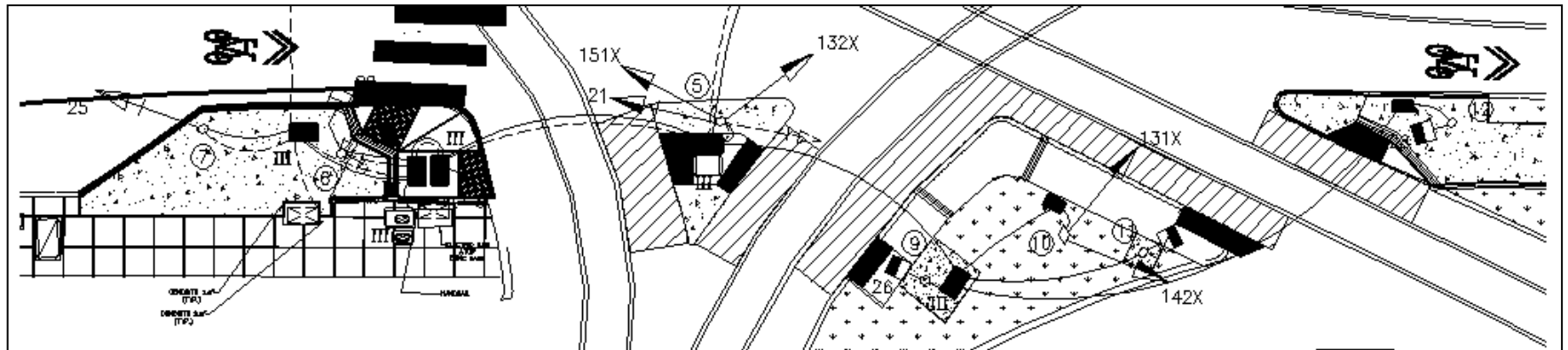


Low shrub: Lantana Camera
'Luscious Grape' (2' tall)

Ocean Ave Accessibility & Signal Upgrades

Between San Jose Avenue and I-280 Freeway

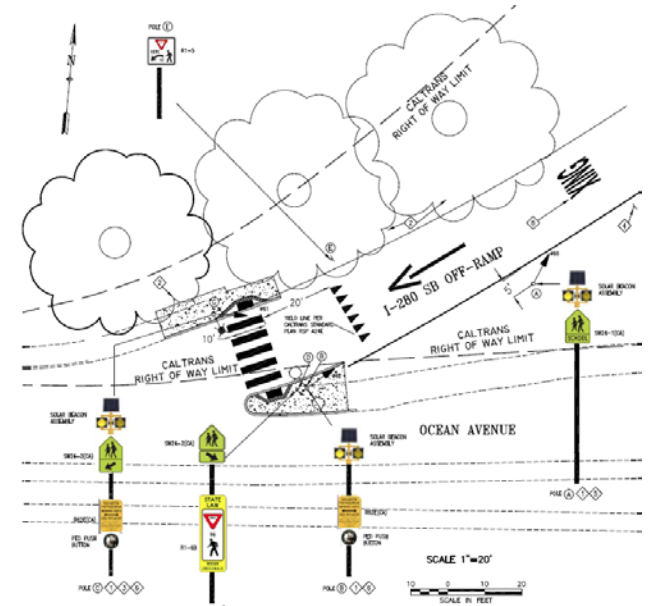
- Clears pedestrian path of travel
- Enhances accessibility
- Improves pedestrian safety by adding pedestrian signals and installing an enhanced crosswalk



Ocean Ave/I-280 Southbound Off-Ramp Crossing

On the I-280 southbound ramp to Ocean Ave:

- Installing three flashing beacon heads
- Installing a pedestrian push button
- Upgrading two curb ramps and the sidewalk at the crossing of the ramp.



Relocation of Trolley Poles

The trolley poles inside the Green Light Rail Center at the Northwest corner of San Jose and Geneva Avenue will be relocated to improve accessibility of the walkway to the Muni station



Installation of Pedestrian Scale Lighting

Along the borders of the Balboa Park Station Area, pedestrian lighting will be installed to increase pedestrian and transit customer safety

SAN FRANCISCO STREET LIGHT PLAN
FIXTURE CATALOGUE TECHNICAL DETAILS **TYPE LP170**

DESCRIPTION

FIXTURE HEAD

- Fiber glass top shade
- Cylindrical UV stabilized polycarbonate enclosure with aluminum band at middle
- Symmetric distribution
- Dimming capability
- IP 65
- Nominal 19.3" H x 25.8" Dia.

POLE

- Pole:
- Straight smooth cast aluminium pole
 - Powder coat finish
 - Nominal 12' H x 5" Dia.

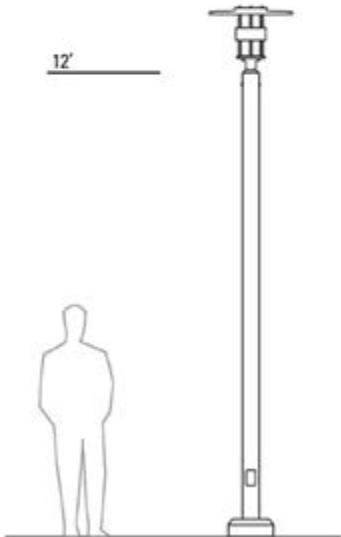
POLE BASE

- 10" bolt circle
- 1" dia. bolts by the contractor per City requirements, 36" length min.
- Two piece base cover

FINISH:

- Powder coat finish - Natural Aluminum or Black

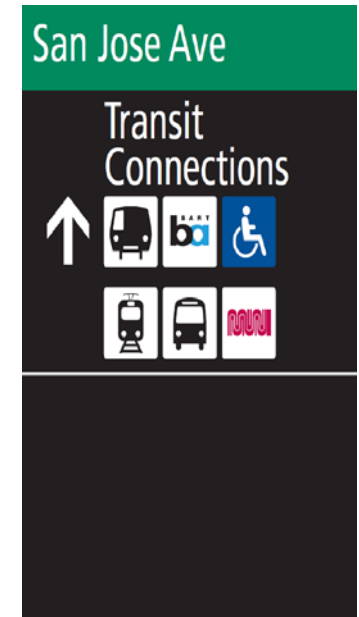
This fixture is new to San Francisco streets.



Installation of Wayfinding Signs

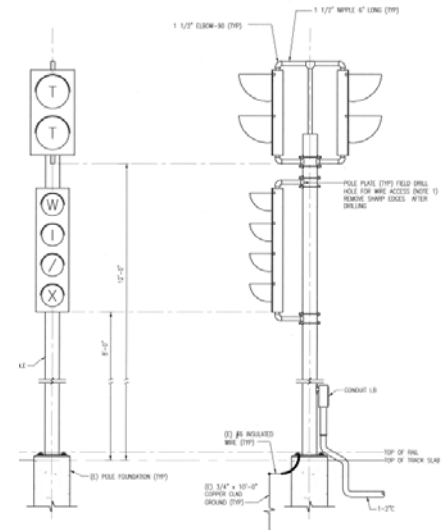
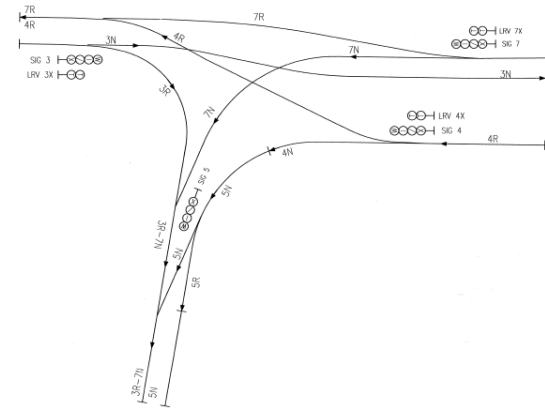
Wayfinding signs will be installed to direct pedestrians to transit facilities in the area

- Thirteen 24" x 36" new signs will be installed on side streets leading to transit facilities.
- Signs will be the same design and size as those installed alongside the Balboa Park transit facility in 2013.



Ocean Avenue/I-280 Northbound On-Ramp Upgrades to the Train Signal System

- Improving service reliability by introducing transit signal priority
- Providing a smoother experience with Improved morning pull out



Project Schedule & Timeline

Began Detail Design	March 2014
Completed Detail Design	March 2015
Advertised Contract	April 2015
Awarded Contract	August 2015
Issue Notice to Proceed	November 2015 (Tentative)
Construction Complete	June 2016 (Tentative)

Transit Service Impacts

- During various phases of construction, bus stops will need to be relocated. Please keep an eye out for temporary bus stop relocation signs that will guide you to the new temporary bus stop location.
- While upgrading the train control and signaling system at Ocean and I-280 SB on ramp, there will be service changes needed to complete the work. We will inform transit riders as soon as the schedule is confirmed.

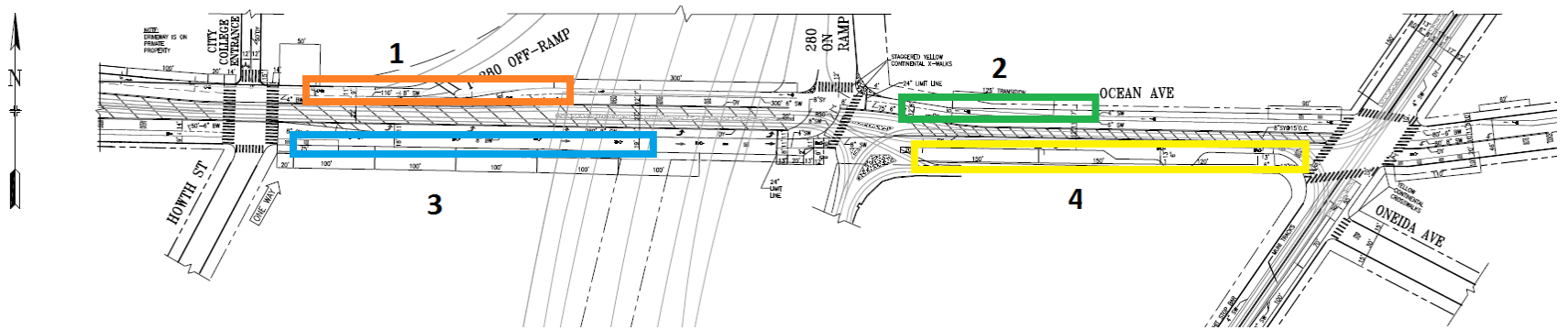
Construction Logistics

- Construction hours are generally from 9 a.m. to 3 p.m. Monday through Friday; however, late hours and weekend work may also be required to obtain a bigger window for construction.
- As with any construction project, some area impacts are expected. This may include some construction noise, dust, service changes, traffic and moving vehicles and equipment.
- SFMTA will consistently work with the community to minimize any disruptions and mitigate concerns.

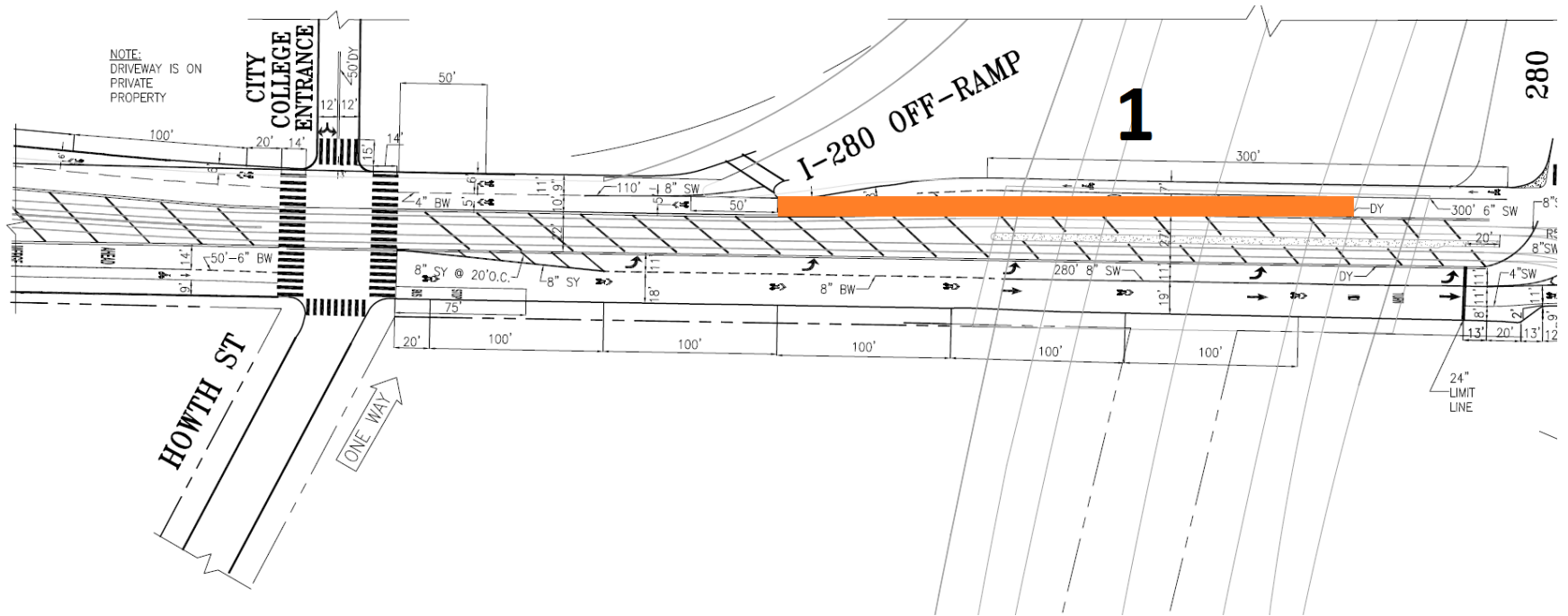
Parking and Traffic Impacts

- Driveway access for residents and businesses may be occasionally delayed by construction equipment. However, there will be access at all times
- Traffic detours may be needed. Electronic messaging boards will be used in affected areas to alert motorists and cyclists. Pedestrian detours will be posted and delineated around the construction zones
- At times, street parking may not be available in and around the construction sites

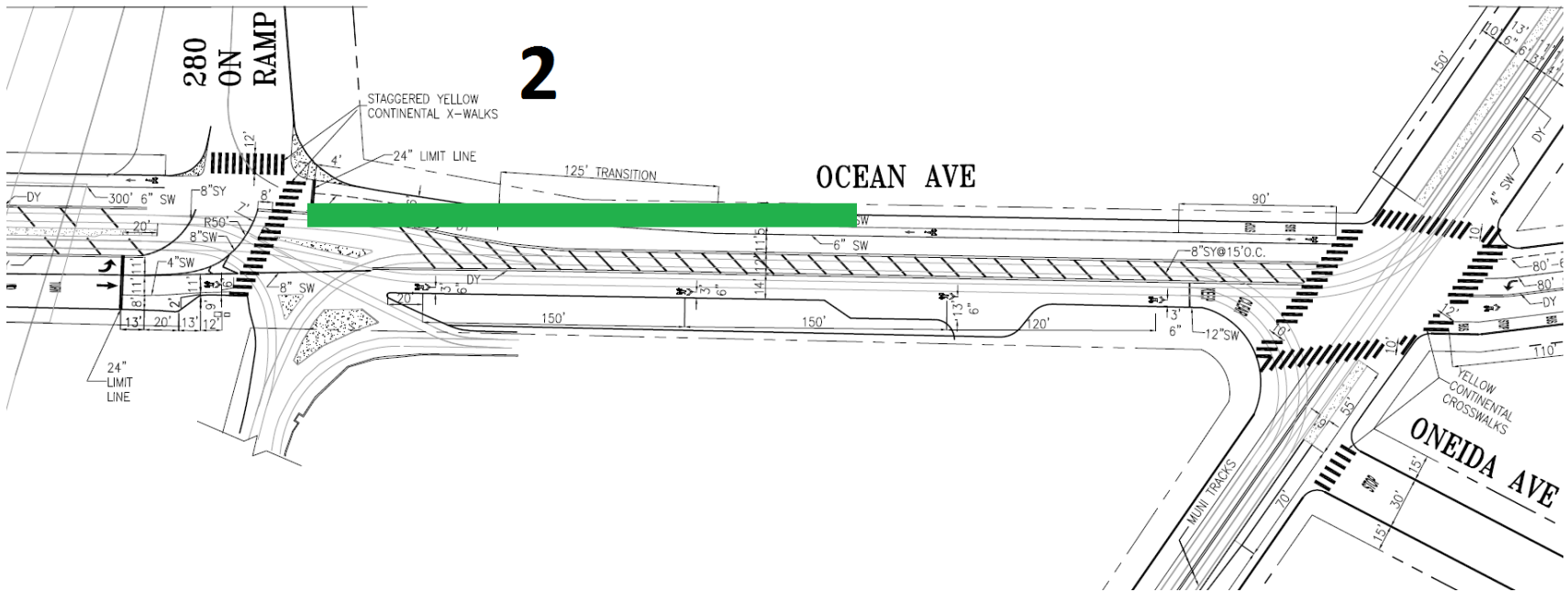
Ocean Ave



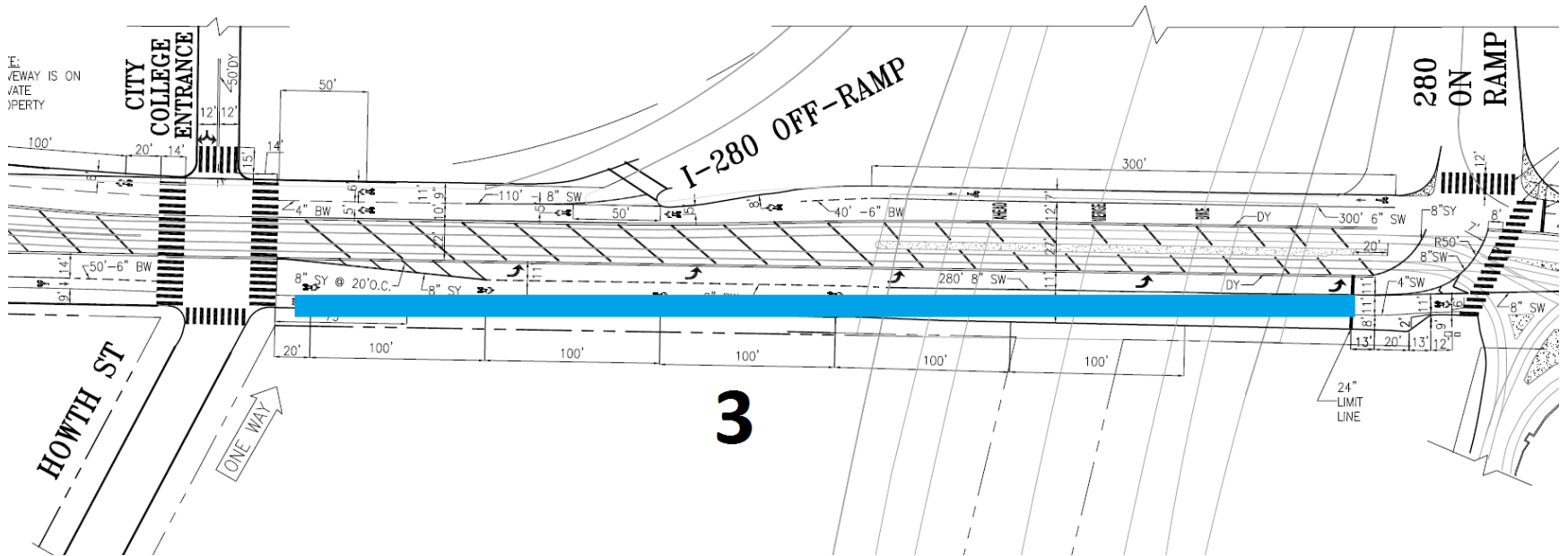
Ocean Ave (Area 1)



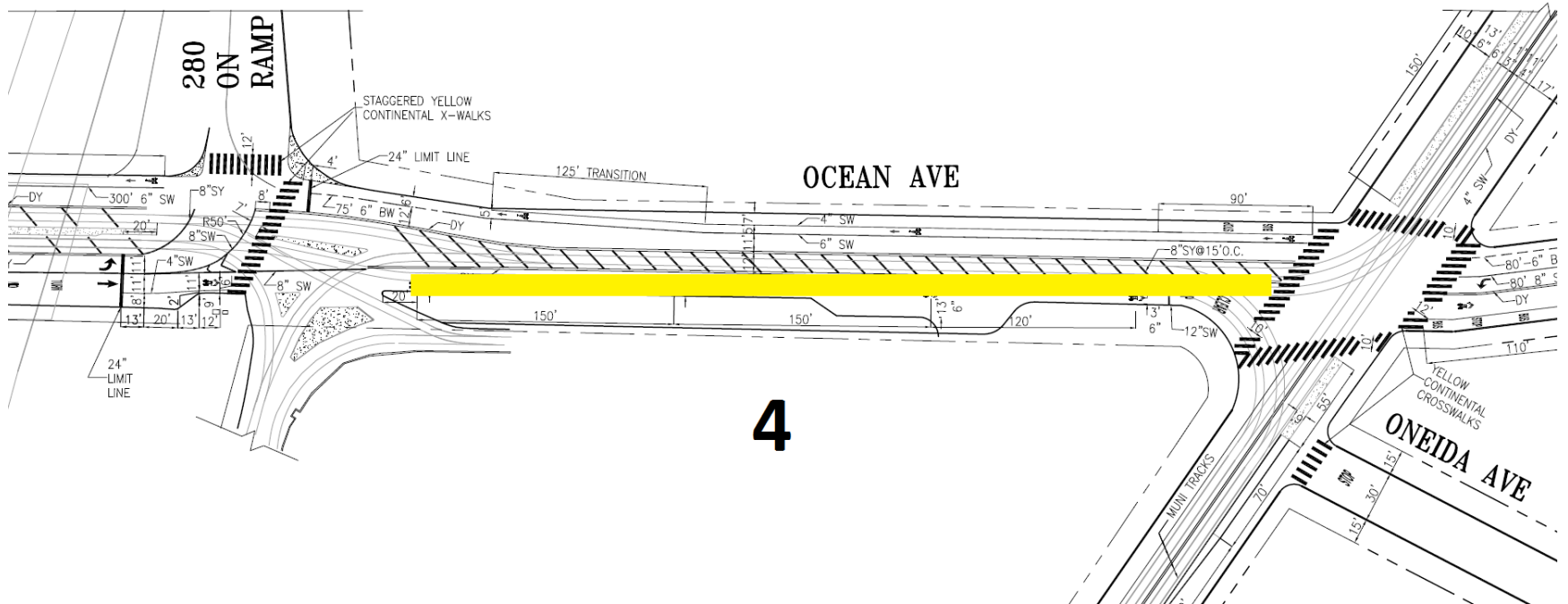
Ocean Ave (Area 2)



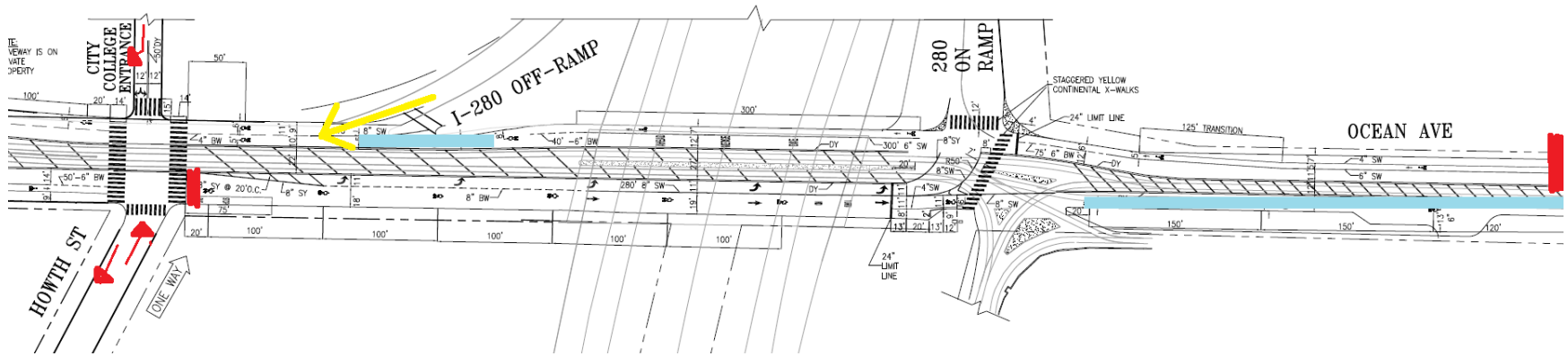
Ocean Ave (Area 3)



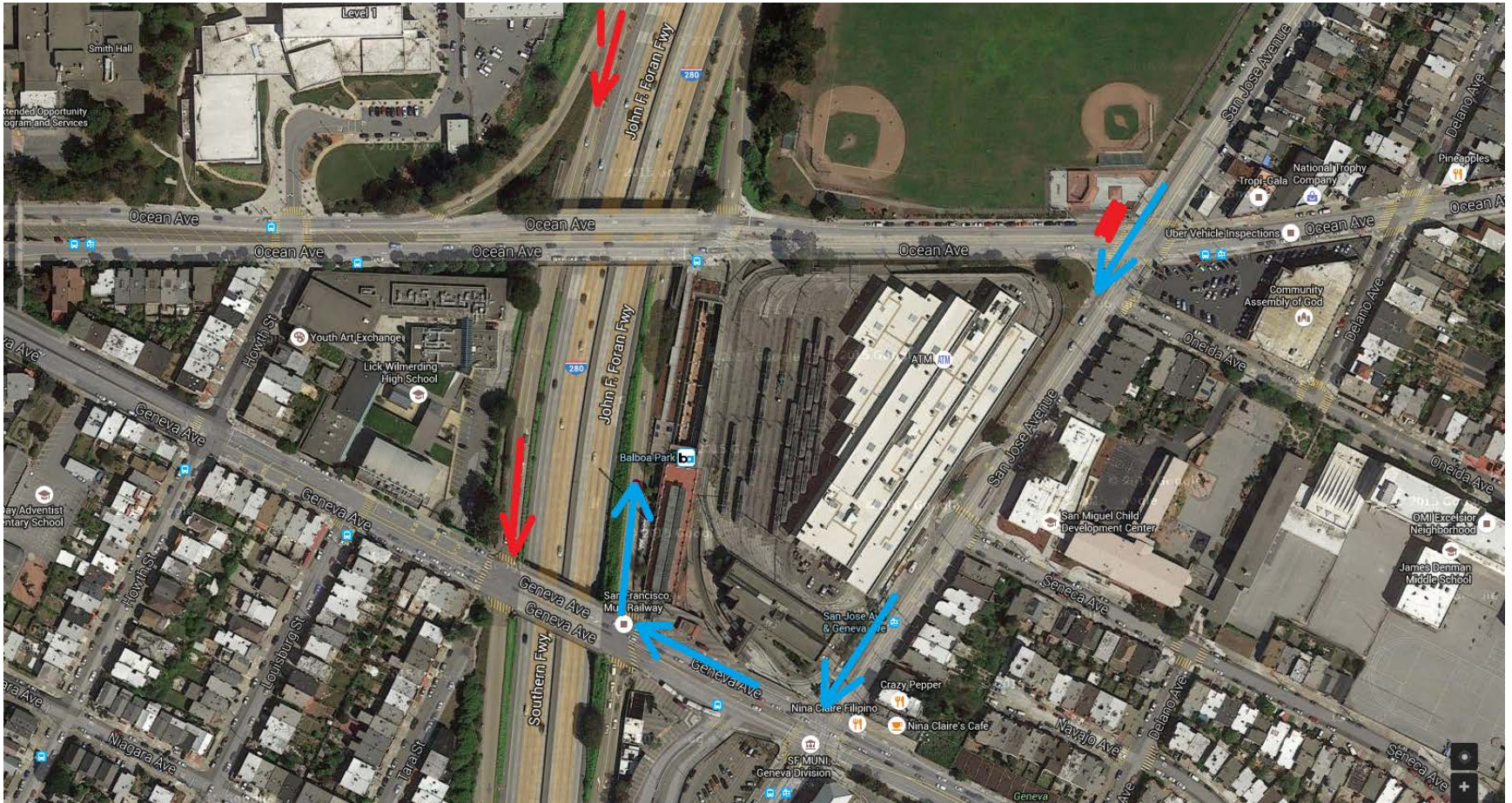
Ocean Ave (Area 4)



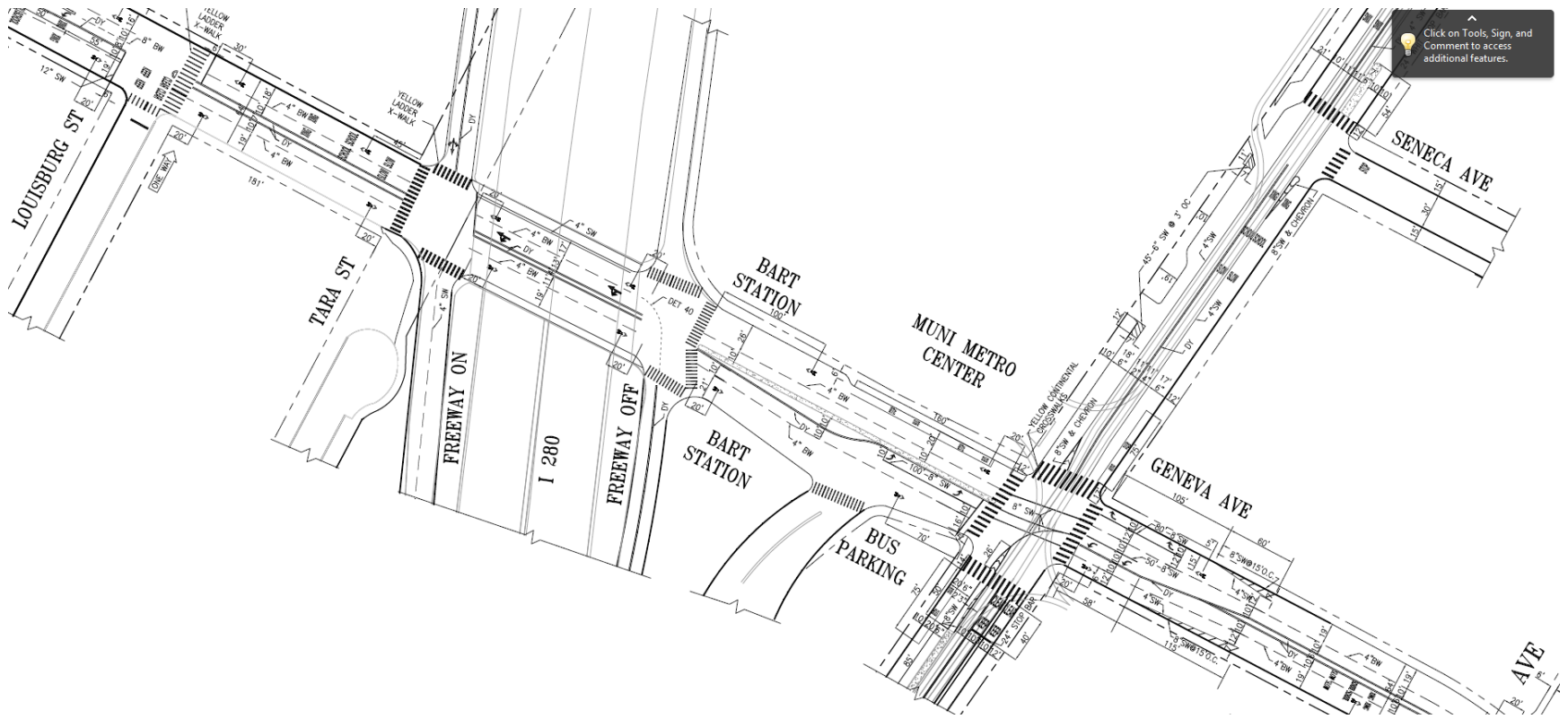
Ocean Ave



280 on-ramp & off-ramp Detour



Geneva Ave



Click on Tools, Sign, and Comment to access additional features.

In Collaboration with other City Agencies



SAN FRANCISCO
PLANNING DEPARTMENT



Questions?

Contact:

Cristina Padilla, Public Relations Officer
Cristina.padilla@sfmta.com; 415.701.2474;

Daniel Padilla, Project Manager
Daniel.padilla@sfmta.com; 415.701.5213

To receive regular project updates via email, please sign up at
www.sfmta.com/BalboaParkArea