

Muni Metro Station Enhancements

Summer 2017



SFMTA
Municipal
Transportation
Agency

SFMTA.COM

INTRODUCTION

The Muni Metro Stations (Embarcadero, Montgomery, Powell, Civic Center, Van Ness, Church, Castro, Forest Hill and West Portal) serves as San Francisco's highest ridership corridor, welcoming over 87,000 people daily. With the exception of Forest Hill Station, the Muni Metro subway system was built in 1980 and has seen little improvements in terms of signage and general customer comfort.

SCOPE

Given customer input and the SFMTA's existing priority to invest in customer comfort upgrades along the Muni Rapid Network, this project aims to improve the customer experience by providing better travel information, clearer wayfinding, cleaner stations and safety improvements. Treatments depend on the station but enhancement elements include paint, lighting and accessibility improvements.

The Project is split into two phases:

- Phase 1: All wayfinding signage upgrades, station improvements at Church, Castro and Powell stations
- Phase 2: Station Improvements at remaining six stations (Embarcadero, Montgomery, Civic Center, Van Ness, Forest Hill and West Portal)

TIMELINE

Phase 1's schedule is below:



Kelley McCoy
1 South Van Ness Avenue 3rd Floor
415.646.2551

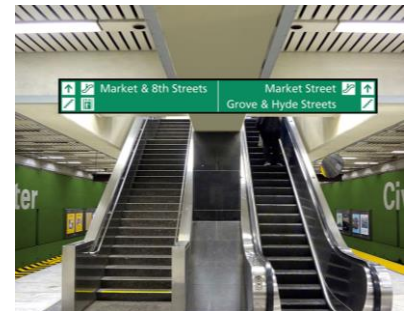


SFMTA
Municipal
Transportation
Agency

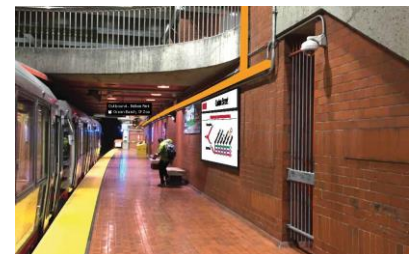
HIGHLIGHTS

The project will deliver improved signage, lighting and other amenities for the station.

Improved Wayfinding Signage and Customer Information at Decision Points



Improved, Efficient Lighting



Improved Station Identification

