

# TNCs & Congestion



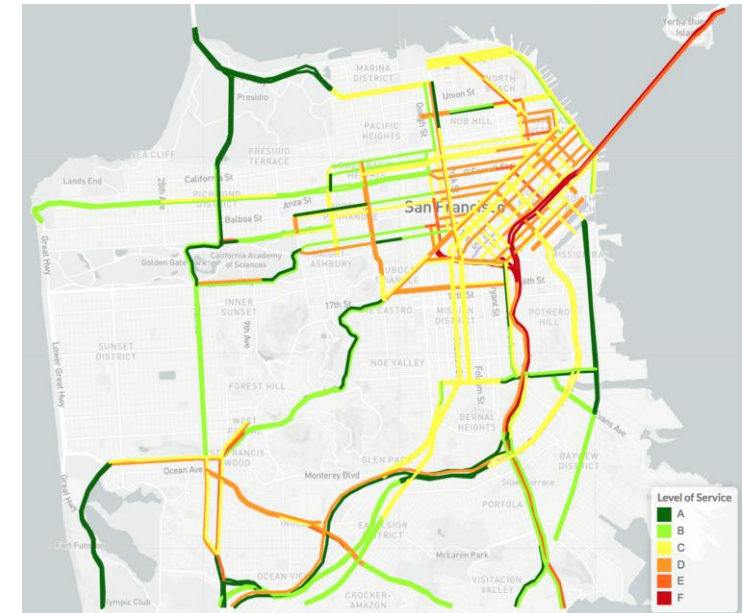
SAN FRANCISCO COUNTY TRANSPORTATION AUTHORITY

November 6, 2018

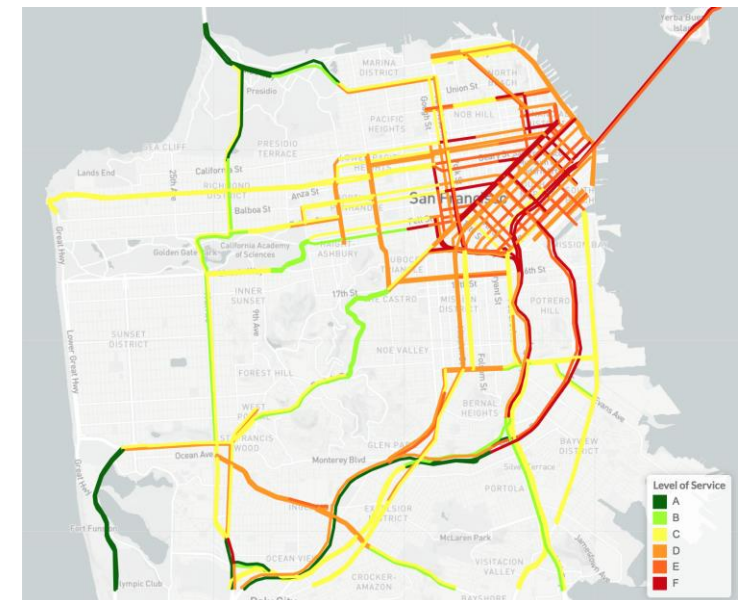
# TNCs & Congestion

- Do TNCs affect roadway congestion in San Francisco?
- Report Contents
  - **Measures** of congestion
  - **Factors** that affect congestion
  - **Data** for quantifying changes in congestion
  - **Methods** for linking changes in congestion to factors
  - **Contributions of factors** to changes in SF congestion

2009 PM PEAK LEVEL-OF-SERVICE



2017 PM PEAK LEVEL-OF-SERVICE



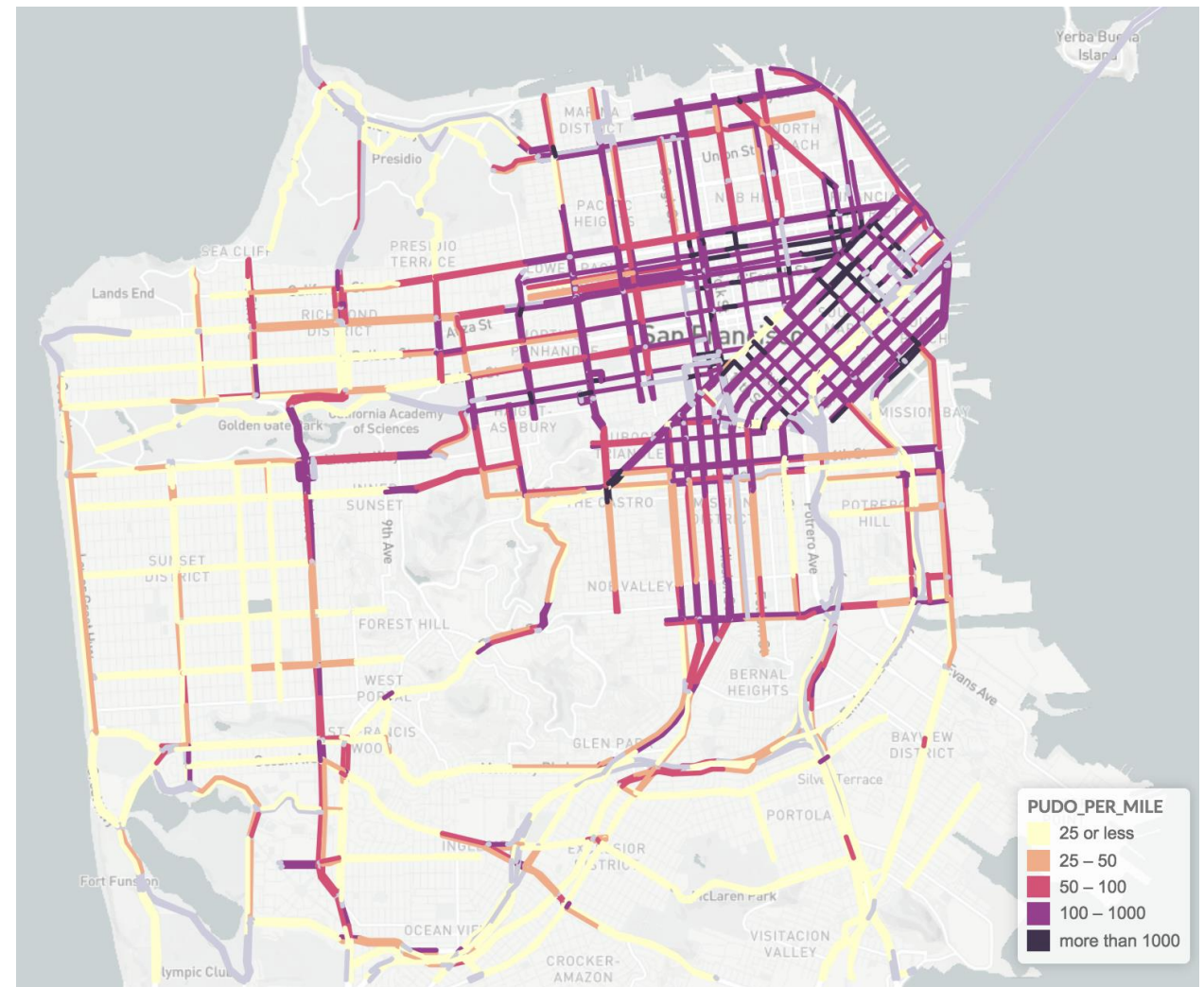
# Factors that Affect Congestion

- How could TNCs decrease congestion?
  - Increased **vehicle occupancy**
  - Mode **shift to transit** due to easier access (first/last mile)
  - Mode **shift away from auto** due to reduced auto ownership
- How could TNCs increase congestion?
  - Add “dead head” or **out-of-service vehicle miles**
  - Mode **shift away from transit and non-motorized** modes
  - **Disrupt traffic flow** due to pickups and drop-offs
- Background traffic and roadway performance
  - **Network** changes (increases or decreases in roadway capacity)
  - **Population** changes
  - **Employment** changes
- Other

# Data

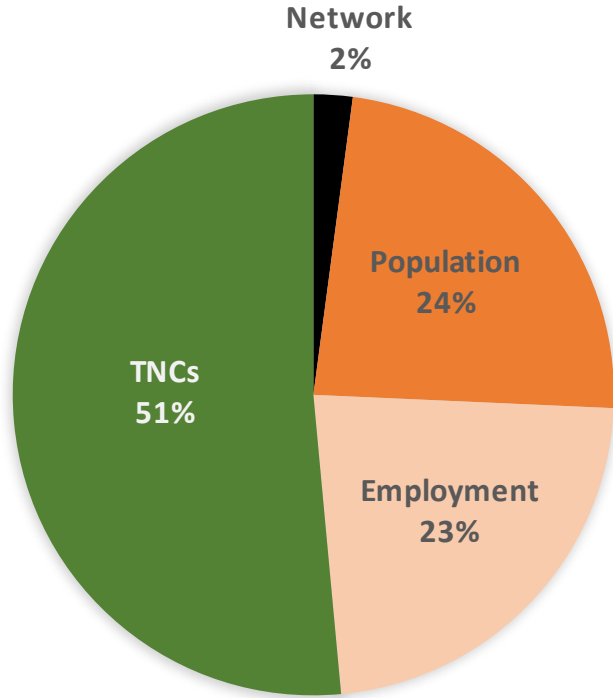
- Congestion (INRIX)
  - Nov / Dec 2010 & 2016
  - 1400 “TMCs” (segments) in SF
  - Speeds, imputed volumes
- TNCs
  - Nov / Dec 2016
  - In-service and out-of-service volumes
  - Pick up and drop off locations
- Background traffic (CHAMP)
  - 2010, 2016 (adjusted from 2015)
  - All streets in SF
  - Volumes, imputed speeds

TNCs Pickup/Dropoff per Mile

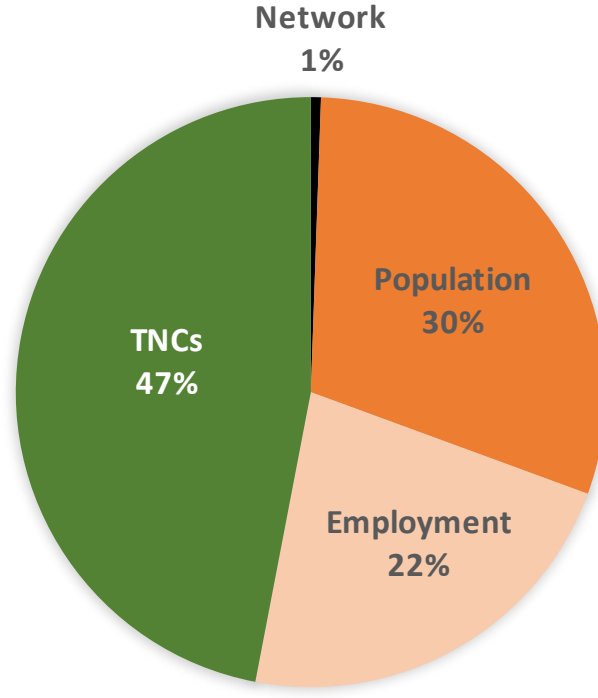


# Causes of Changes in Congestion (2010-2016)

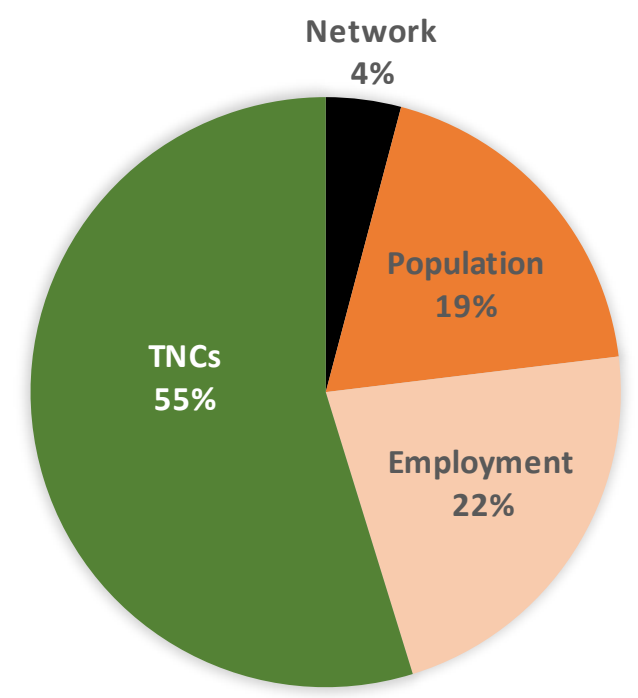
SHARE OF CHANGE IN DELAY BY FACTOR



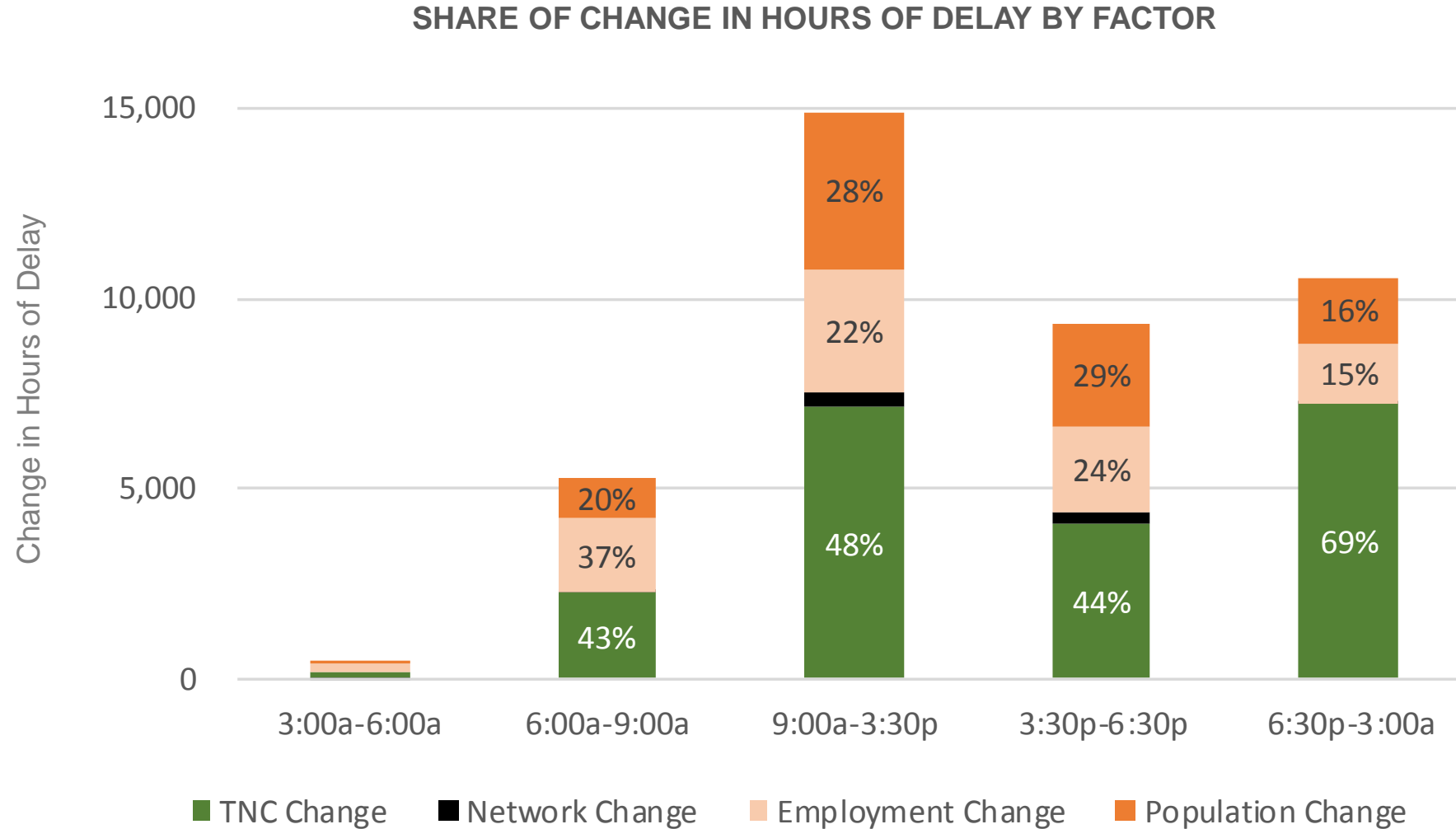
SHARE OF CHANGE IN VMT BY FACTOR



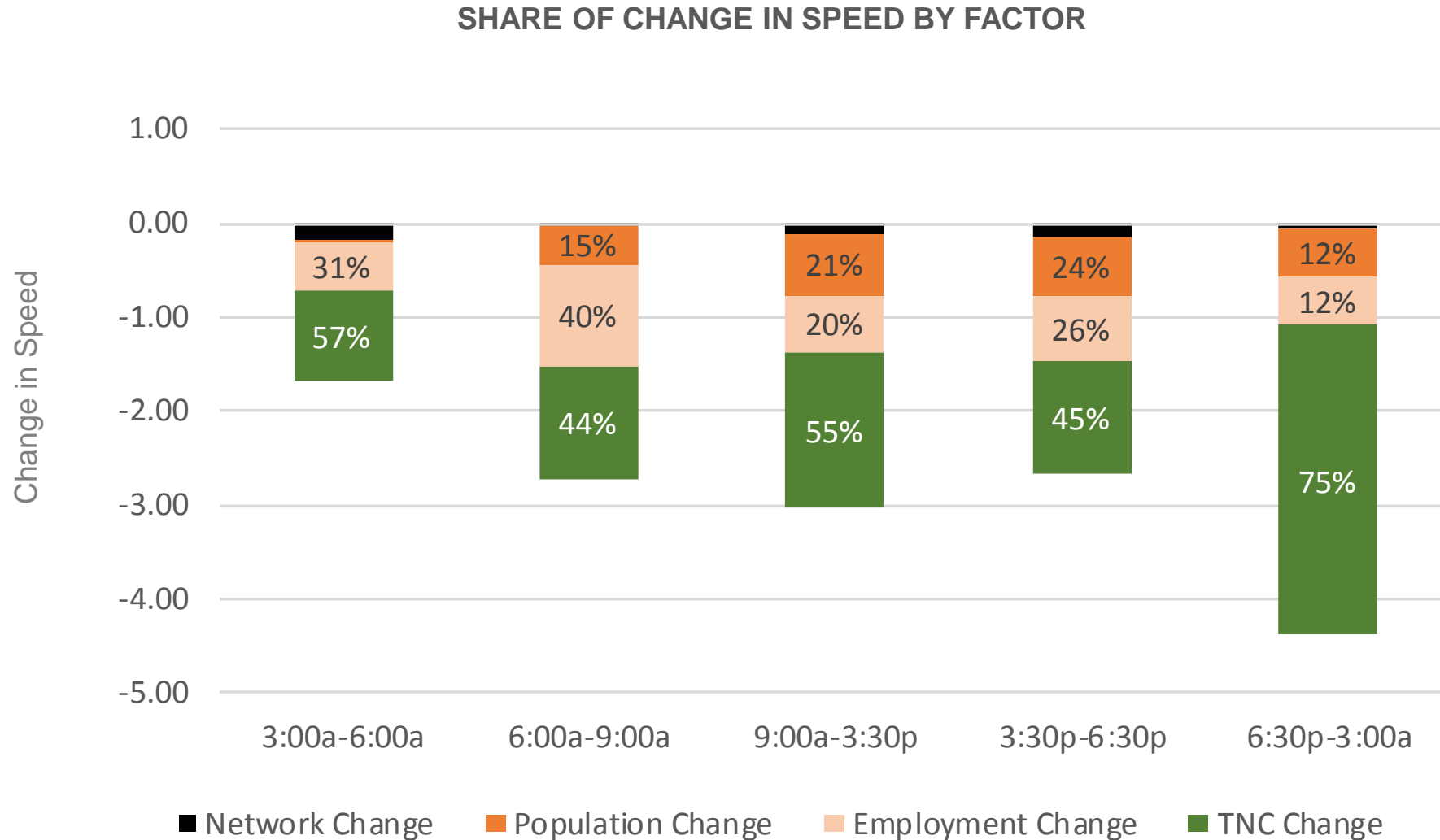
SHARE OF CHANGE IN SPEED BY FACTOR



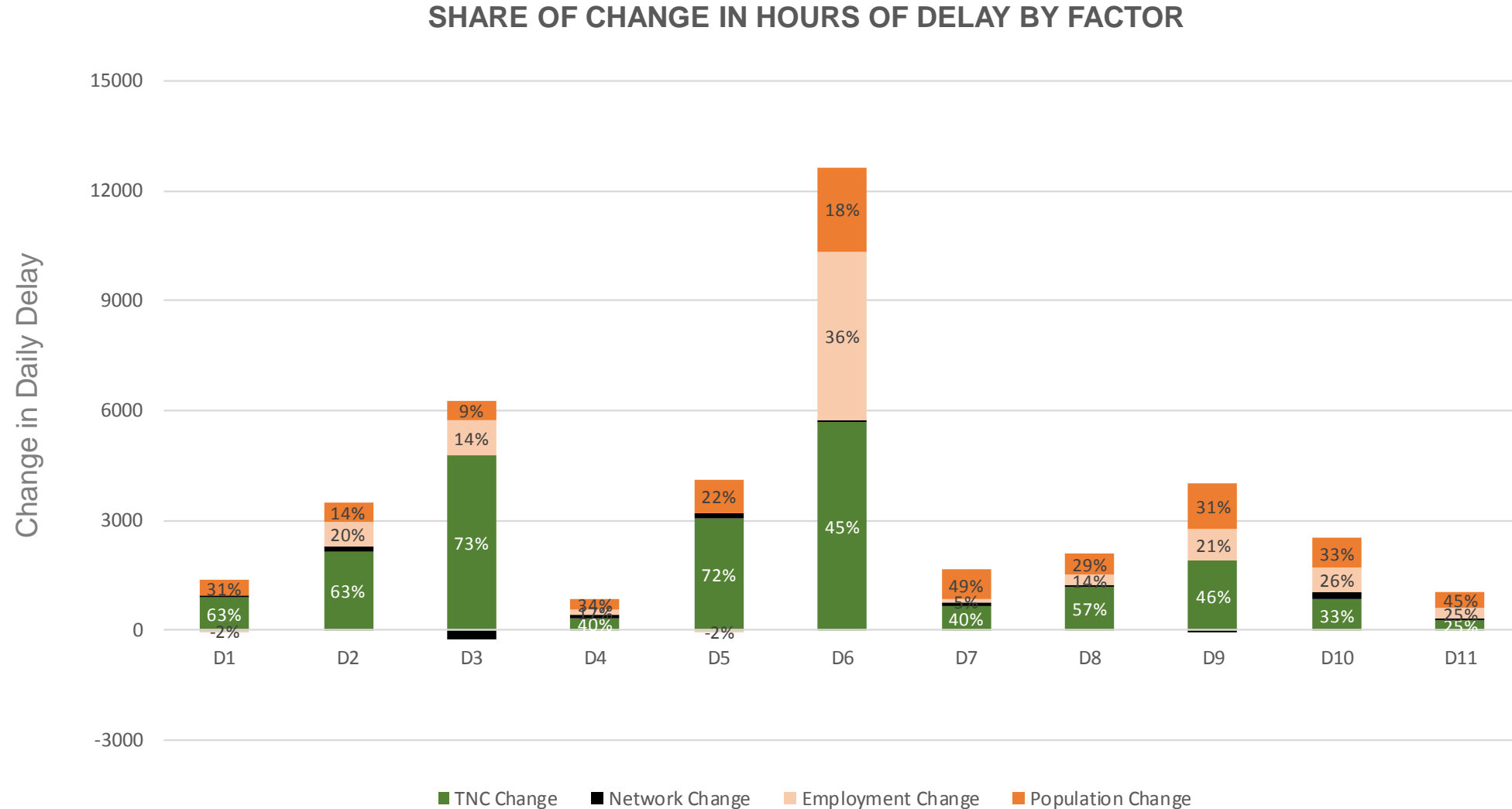
# Factors Affecting Hours of Delay by Time Period



# Factors Affecting Speed by Time Period



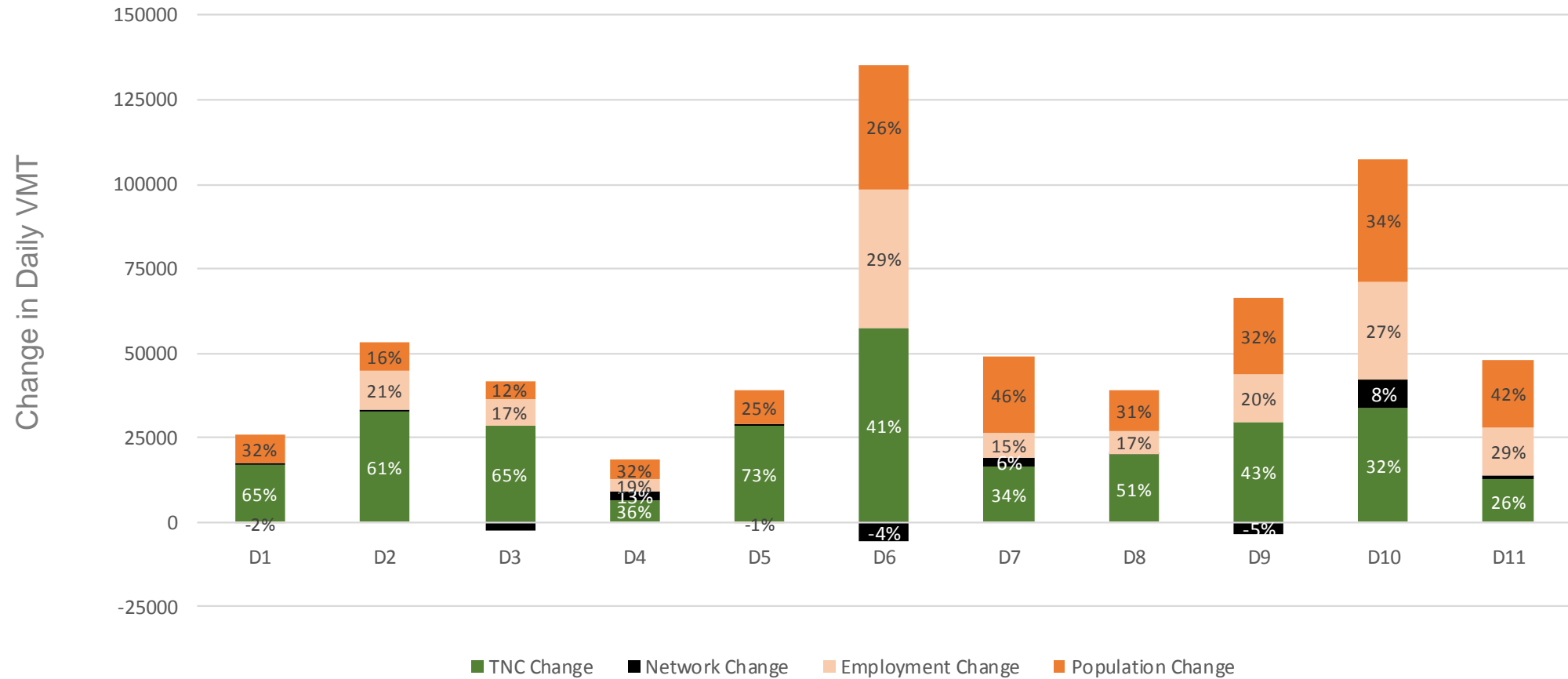
# Factors Affecting Hours of Delay by District



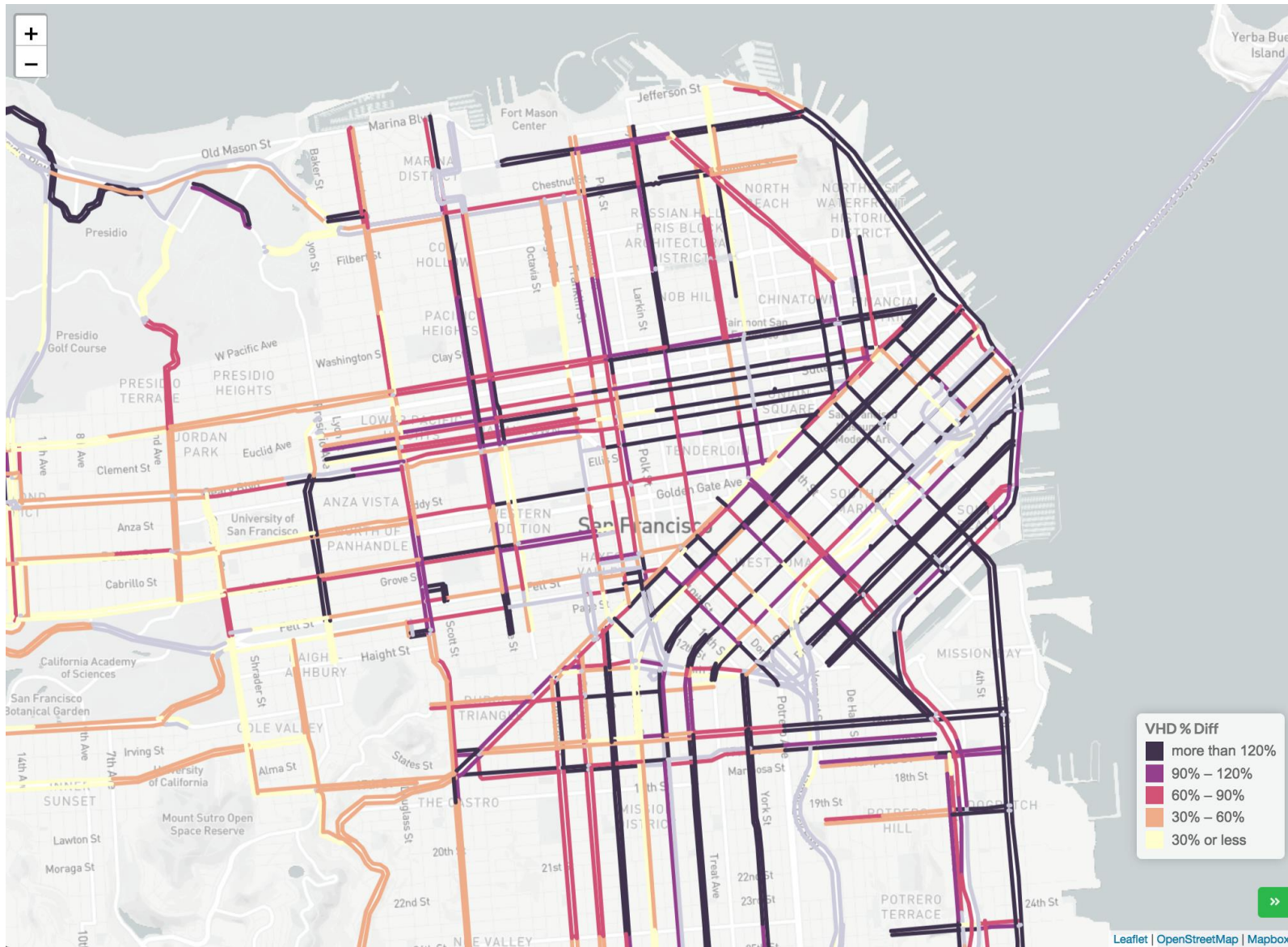


# Causes of Increased VMT by District

SHARE OF CHANGE IN VMT BY FACTOR



# Interactive Data Visualization



**TNCs & CONGESTION**

What is this? Learn More

**Vehicle Hours of Delay (VHD)**

**Vehicle Miles Traveled (VMT)**

Speed

**CHOOSE FACTORS AFFECTING CONGESTION:**

Network Effect

Population Effect

Employment Effect

TNC Effect

**CHOOSE TIME PERIOD:**

Daily 6:00a-9:00a 9:00a-3:30p 3:30p-6:30p 6:30p-3:00a 3:00a-6:00a

**FACTORS AFFECTING CHANGE IN CONGESTION**

All Segments Combined

Factor	Percentage
Network	51%
Population	24%
Employment	23%
TNC	2%

San Francisco County Transportation Authority

# Questions?

Project Manager: Joe Castiglione,  
[joe.castiglione@sfcta.org](mailto:joe.castiglione@sfcta.org)

Project Staff: Drew Cooper,  
[drew.cooper@sfcta.org](mailto:drew.cooper@sfcta.org)



SAN FRANCISCO COUNTY TRANSPORTATION AUTHORITY