



VISION  
ZERO  
SF

SAFETY  
IN ACTION

# MUNI FORWARD

December 5, 2017

L Taraval Rapid Project

SFMTA Board of Directors Meeting

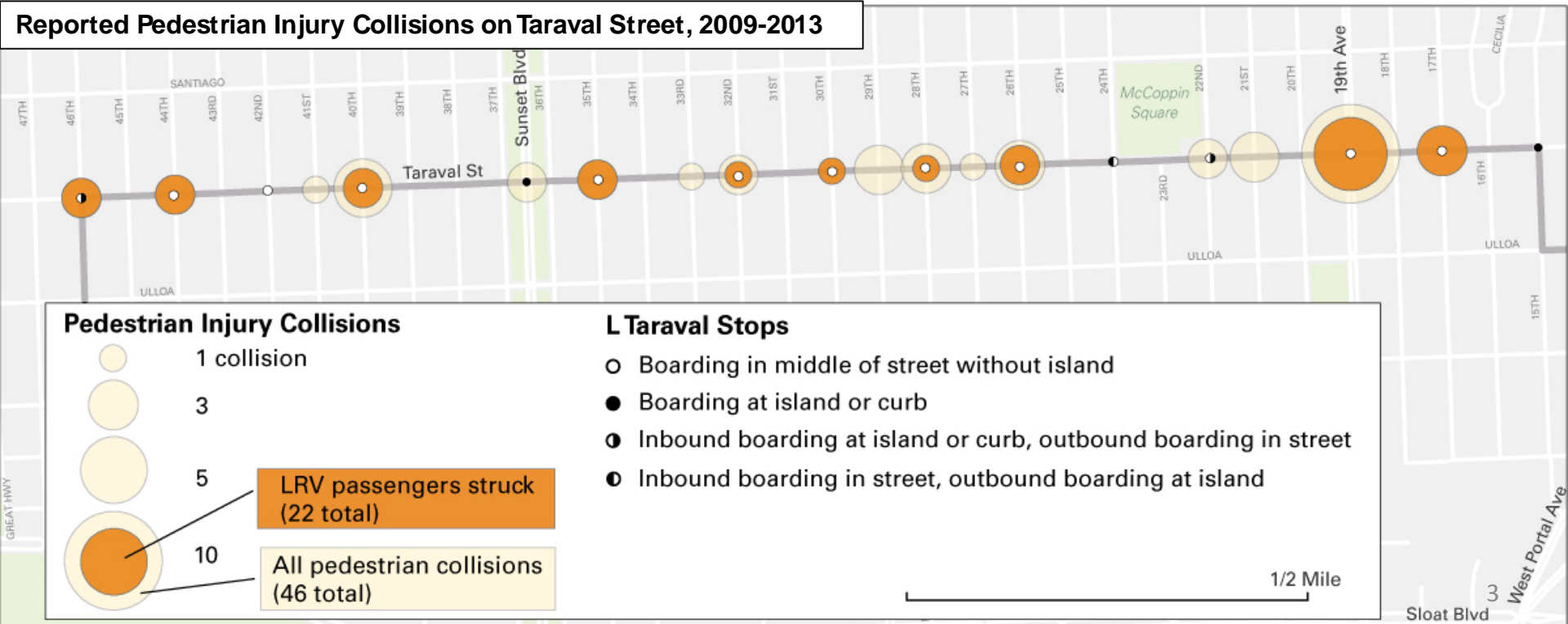
# L TARAVAL PROJECT GOALS

1. Improve **state of good repair** of our transit system
  - Track and overhead replacement
  - Surface repaving
  - Water and sewer replacement
  - Curb ramp upgrades
2. **Improve safety** on Taraval
  - Prevent injuries, in support of Vision Zero
3. Improve **transit reliability** and **comfort**
  - Reduce long waits for the train

# PROJECT GOAL: IMPROVE SAFETY

- » Taraval is on the Vision Zero High Injury Network
- » In the past 5 years, 46 pedestrians have been hit
- » **22** of those hit were getting on or off the train

Reported Pedestrian Injury Collisions on Taraval Street, 2009-2013



# DEVELOPING A SOLUTION WITH THE COMMUNITY

- » **September 2015:** Focus group 1 and 2
- » **Oct 7, 2015:** 1st open house
- » **Nov 4, 2015:** “Pop-up” open house
- » **Dec 14, 2015:** 2nd open house
- » **Feb 4, 2016:** Walking tour
- » **Feb 17, 2016:** Third open house
- » **April 13, 20, 27, 2016:** Series of small group meetings with Taraval stakeholders
- » **Summer 2016:** Webinar, letter to 16,000 residents summarizing project
- » **July 22, 2016:** Public Engineering Hearing
- » **September 26, 2016:** SFMTA Board approval
- » **December 8, 2016:** Passenger Loading Zone Evaluation small group meeting #1
- » **Spring 2017:** Extensive outreach and noticing in advance of early implementation
- » **April 2017:** Official launch of the six month Passenger Loading Zone Evaluation period, early implementation of safety improvements and stop changes, education campaign to increase awareness of law to stop behind loading trains
- » **May 18, 2017:** Evaluation small group meeting #2
- » **August 15, 2017:** Evaluation small group meeting #3
- » **September 2017:** Residents vote on angled parking by mail
- » **October 6, 2017:** Public engineering hearing on additional project changes
- » **November 13, 2017:** Evaluation small group meeting #4
- » **Throughout 2017:** Ongoing conversations with merchants and residents to make adjustments such as adding loading zones.



# PROJECT APPROVED SEPTEMBER 20, 2016

- » Boarding islands
- » Stop removal and relocation
- » Traffic signals
- » Transit-only lanes (left turns allowed)
- » Pedestrian bulbs
- » Relocate and manage parking

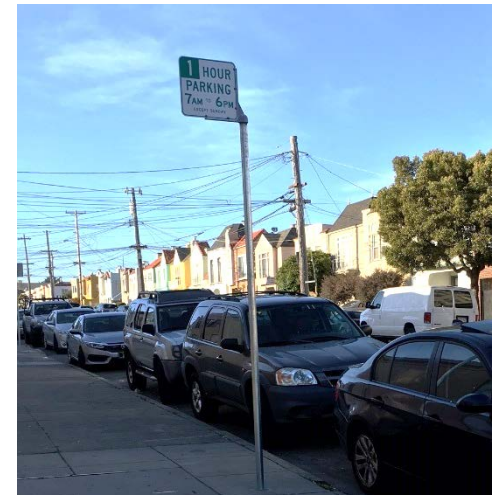
# EARLY IMPLEMENTATION OF IMPROVEMENTS



Clear zones at stops



Curb management



Time limits and meters



Transit-only lanes (left turns allowed)



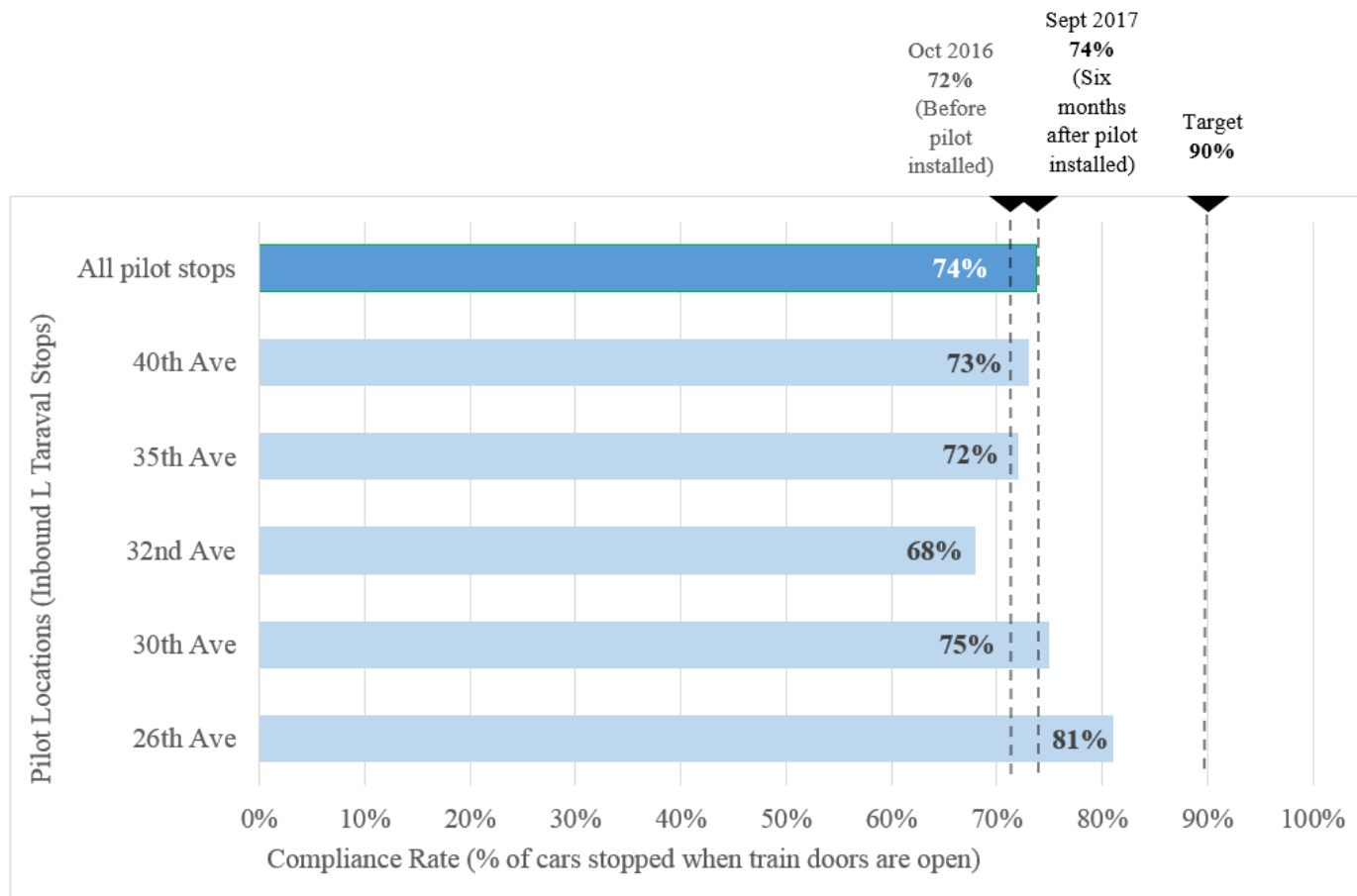
Six month Passenger Loading Zone Evaluation <sup>6</sup>

# PASSENGER LOADING ZONE EVALUATION



# EVALUATION RESULTS

## Passenger Loading Zone Evaluation: Final Compliance Rate



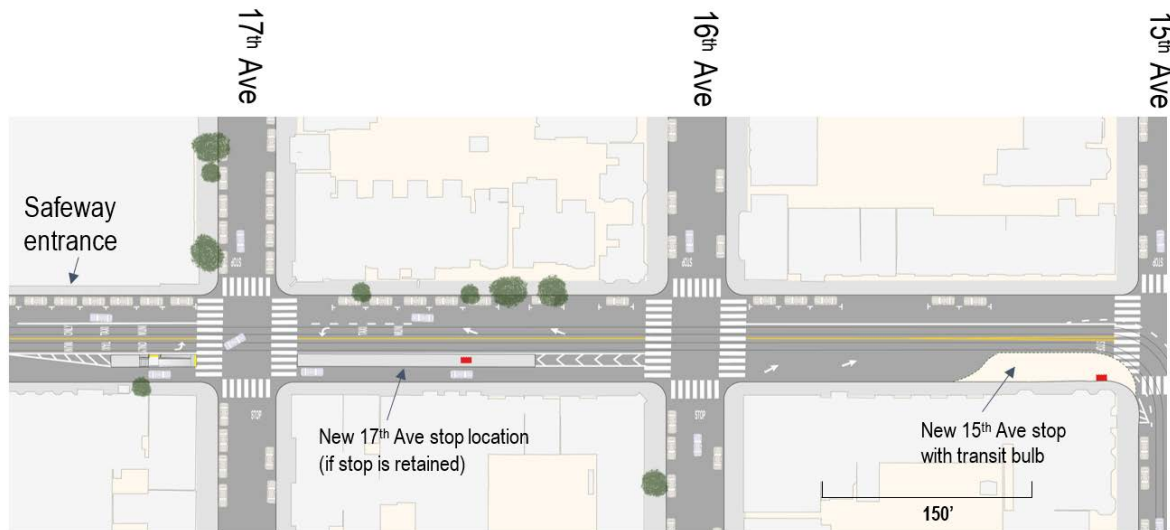
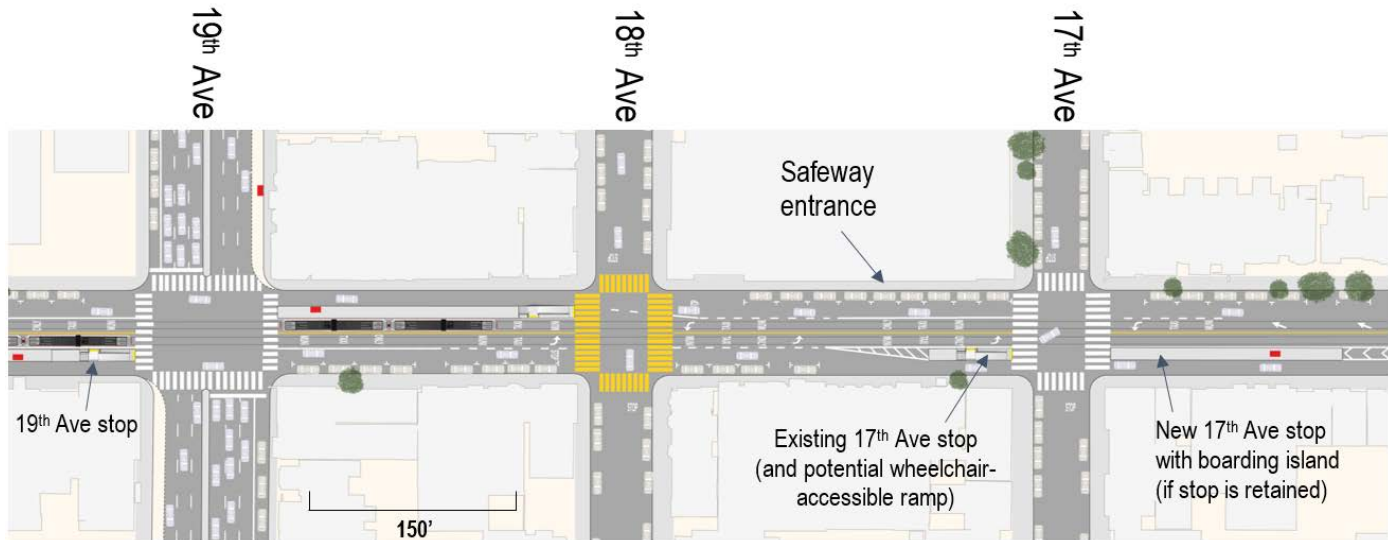


# PROPOSED STOP CHANGES

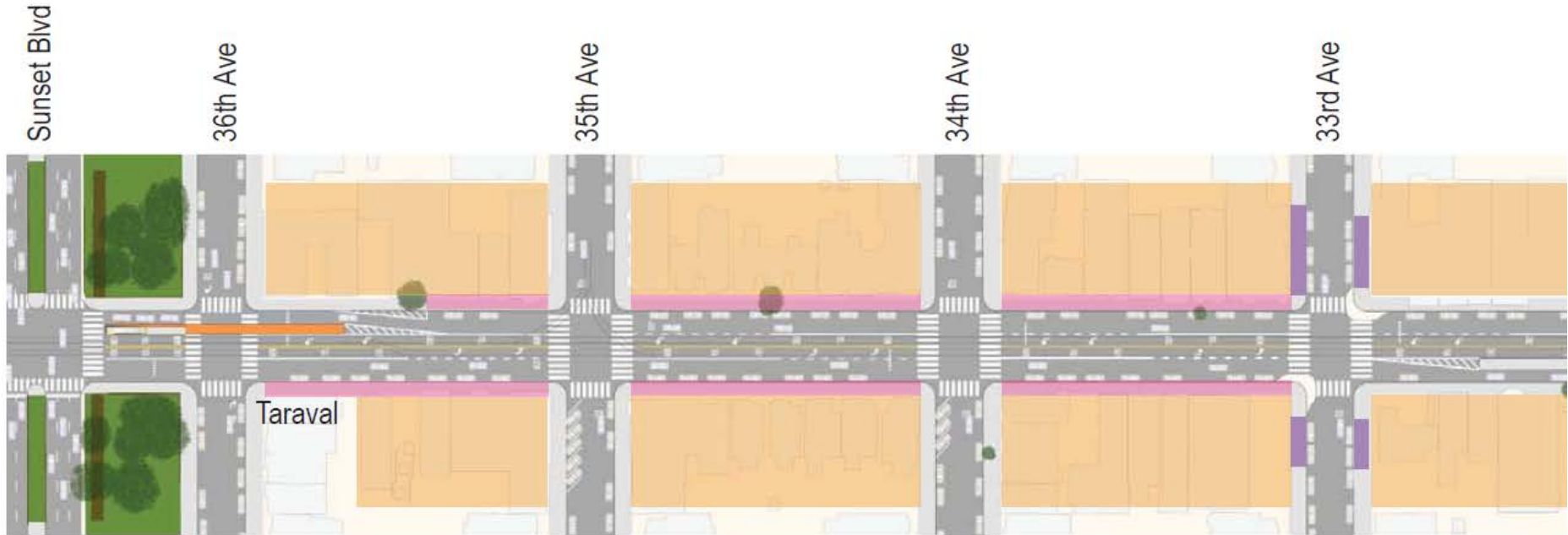


SFMTA stop spacing standard for surface rail: 3-5 blocks (Sunset east-west blocks)

# PROPOSED STOP CHANGES: 17<sup>TH</sup> AVENUE



# PROPOSED PARKING TIME LIMITS: 33<sup>RD</sup> TO 36<sup>TH</sup>

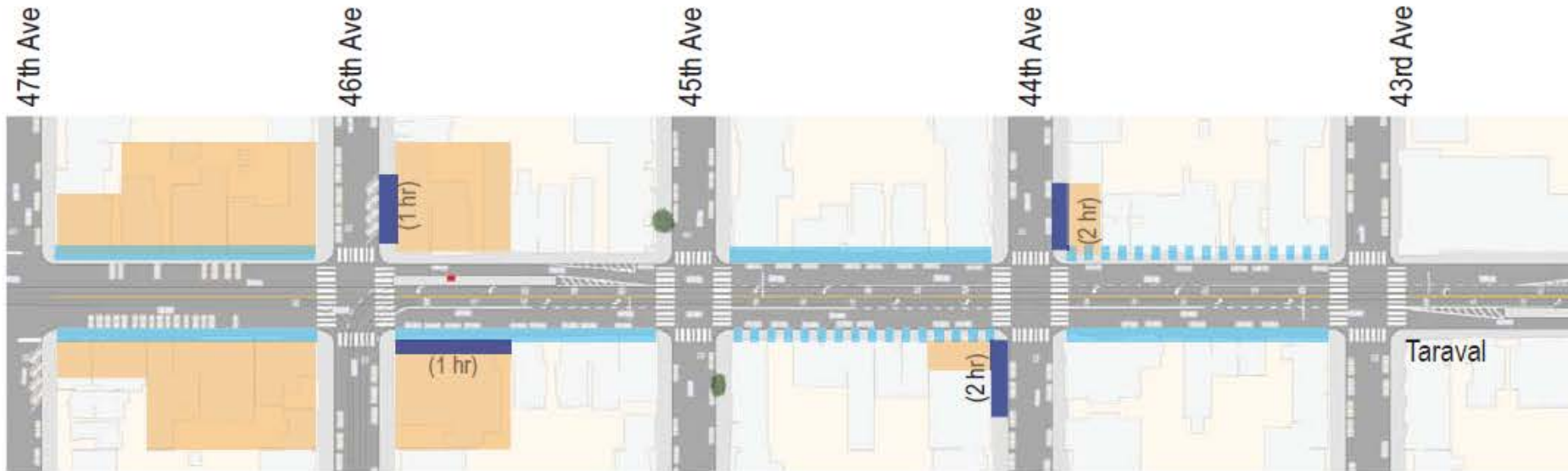


 Proposed - Parking with 2 hour Time Limits, 8am to 6pm, MON-SAT

 Existing - Parking with 1 hour Time Limits, 7am to 6pm, MON-SAT

 West to SF Zoo

# PROPOSED PARKING TIME LIMITS: 43<sup>RD</sup> TO 47<sup>TH</sup>



← West to SF Zoo

- Proposed: Parking with 4 hour Time Limits, 8am to 6pm, MON-SAT
- ▤ Proposed: Parking with 4 hour Time Limits, 7am to 6pm, MON-SAT if stop is removed as boarding islands will not be installed
- Existing: Parking with 1 or 2 hour Time Limits, 7am to 6pm, MON-SAT

# TODAY'S LEGISLATION

## **Transit reliability**

- Remove 3 stops (35<sup>th</sup>/44<sup>th</sup> inbound, 44<sup>th</sup> outbound)
- Final decision on removing 17<sup>th</sup> Avenue inbound

## **Parking management**

- Add 2-hour time limits on Taraval Street from 33<sup>rd</sup> to 36<sup>th</sup> Avenue
- Add 4-hour time limits on Taraval Street from 43<sup>rd</sup> Avenue to 47<sup>th</sup> Avenue

## NEXT STEPS

- Remaining proposals at SFMTA Board – today
- Parking time limits implemented early 2018
- Ongoing outreach to merchants on parking needs and solutions, such as new loading zones
- Full project construction: Fall 2018-2021
  - Bus substitution fall 2019 – fall 2020 (12 months)