



SFMTA/SFPD Partnership

Director Lea Militello

Commander Mikail Ali

Special Operations/MTA

Overview of Muni Enforcement

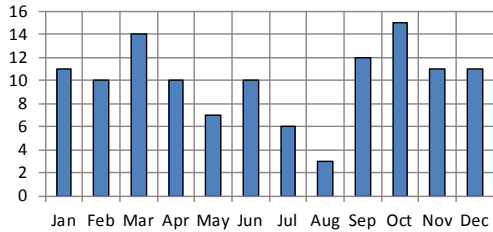
The SFPD and SFMTA agreed to deploy resources based on statistical analysis of crime, community complaints and operators' concerns.

1. SFMTA/SFPD compiles and analyzes the monthly stats and sends regular statistical updates to the District Station Captains.
2. District Station Captains, utilize comp stat information, to develop monthly enforcement plans to address transit issues in their districts.
3. Deployment of District Station Resources is not Funded by SFMTA.

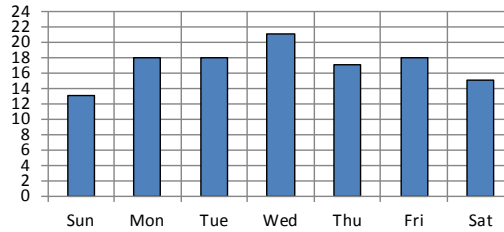
Muni-Related Incident Reports

Mission
As of 12/31/2012

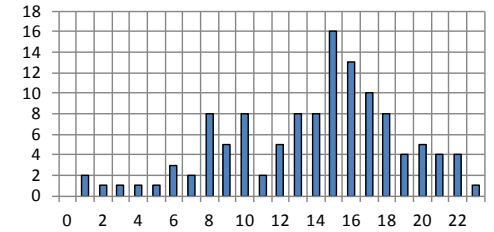
**Mission Incidents
by Month of Occurance**



**Mission Incidents
by Day of Occurance**



**Mission Incidents
by Hour of Occurance**



**Mission Incidents
by Citation Code**

	Last Month	To Date
Part I - Assault	1	10
Part I - Burglary	0	1
Part I - Larceny	2	38
Part I - Personal/Other Theft	0	2
Part I - Robbery	2	18
Part I - Other	0	0
Part II - Graffiti/Vandalism	0	7
Part II - Other	6	43

**Mission Incidents
by Muni Line**

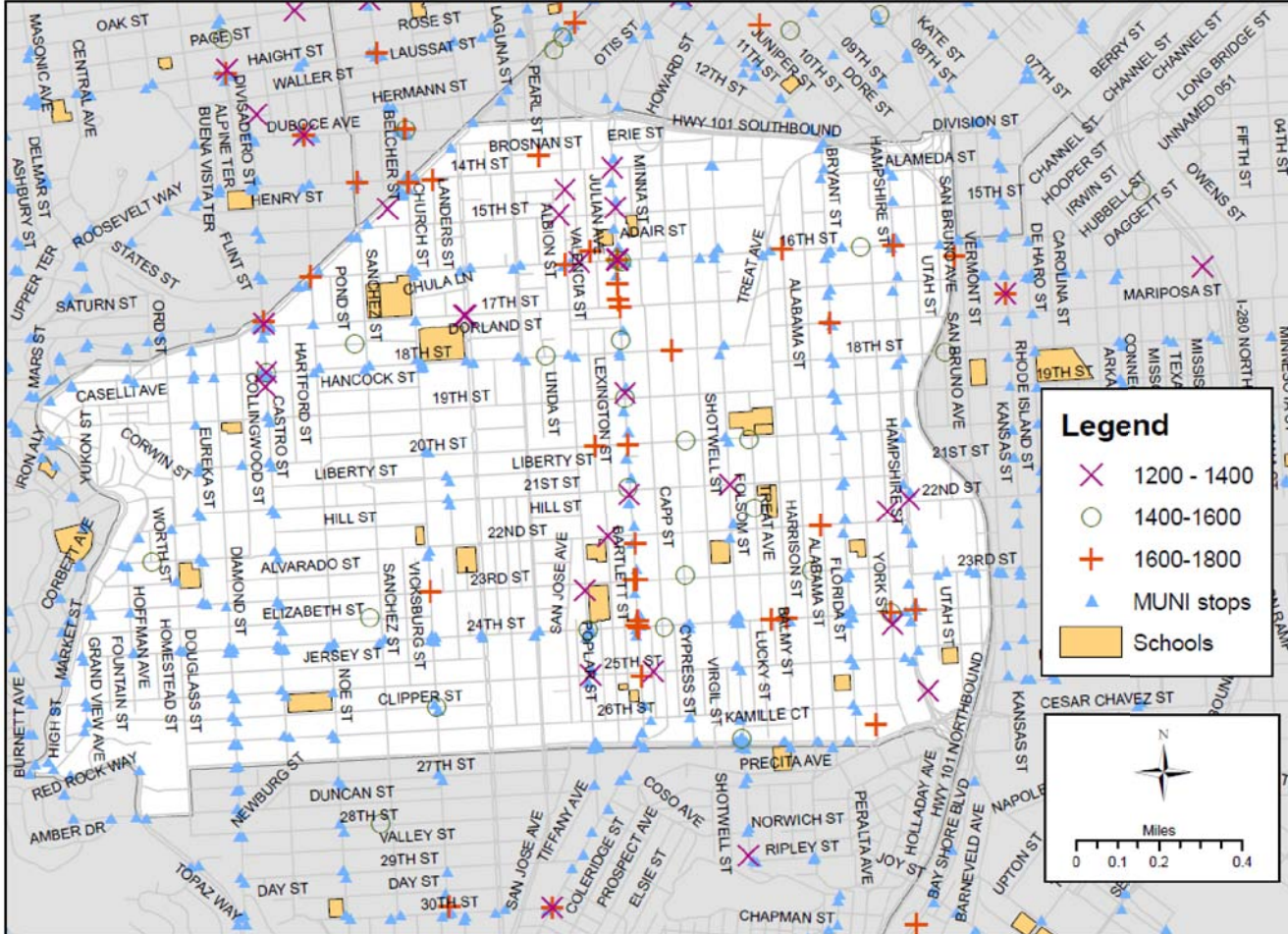
	Last Month	To Date
14 - Mission	4	25
22 - Fillmore	1	21
Other (enter line in comr	0	18
9 - San Bruno	2	13
49 - Van Ness-Mission	0	10
14L - Mission Limited	1	6
48 - Quintara-24th Street	0	6
J - Church	1	4
KT - Ingleside/Third St	0	3
L - Taraval	0	3

**Mission Incidents
by Intersection**

	Last Month	To Date
16th & Mission	2	26
24th & Mission	0	8
16th & Potrero	2	7
24th & Potrero	1	6
Church & Market	0	6
24th & South Van Ness	0	5
14th & Mission	0	4
20th & Mission	1	3
15th & Mission	0	3
Castro & Market	0	3

Muni Incident Summary

Muni incidents, last month - 11
Muni incidents to date - 120



San Francisco Police Department | Contact Ron Filion, Ron.Filion@sfgov.org

Sources: CrimeServer-SFPD, SFdata.org

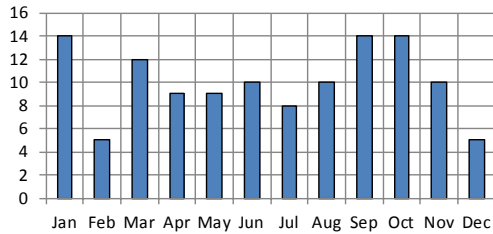
Crime Map of Mission District Robberies

Working with student interns, crime data is now being captured and mapped to assist in the deployment of police resources to both solve and abate robberies.

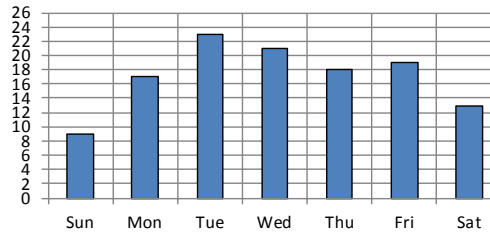
Muni-Related Incident Reports

Ingleside
As of 12/31/2012

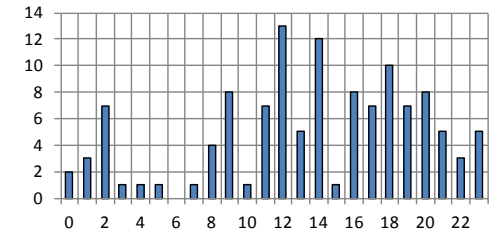
Ingleside Incidents by Month of Occurance



Ingleside Incidents by Day of Occurance



Ingleside Incidents by Hour of Occurance



Ingleside Incidents by Citation Code

	Last Month	To Date
Part I - Assault	0	5
Part I - Burglary	0	0
Part I - Larceny	0	38
Part I - Personal/Other Theft	0	1
Part I - Robbery	5	45
Part I - Other	0	1
Part II - Graffiti/Vandalism	0	3
Part II - Other	0	27

Ingleside Incidents by Muni Line

	Last Month	To Date
8X - Bayshore Express	0	38
14 - Mission	2	25
29 - Sunset	1	12
44 - O'Shaughnessy	1	9
Other (enter line in comr)	0	6
9 - San Bruno	0	6
J - Church	0	5
14L - Mission Limited	0	4
24 - Divisadero	0	4
49 - Van Ness-Mission	0	3

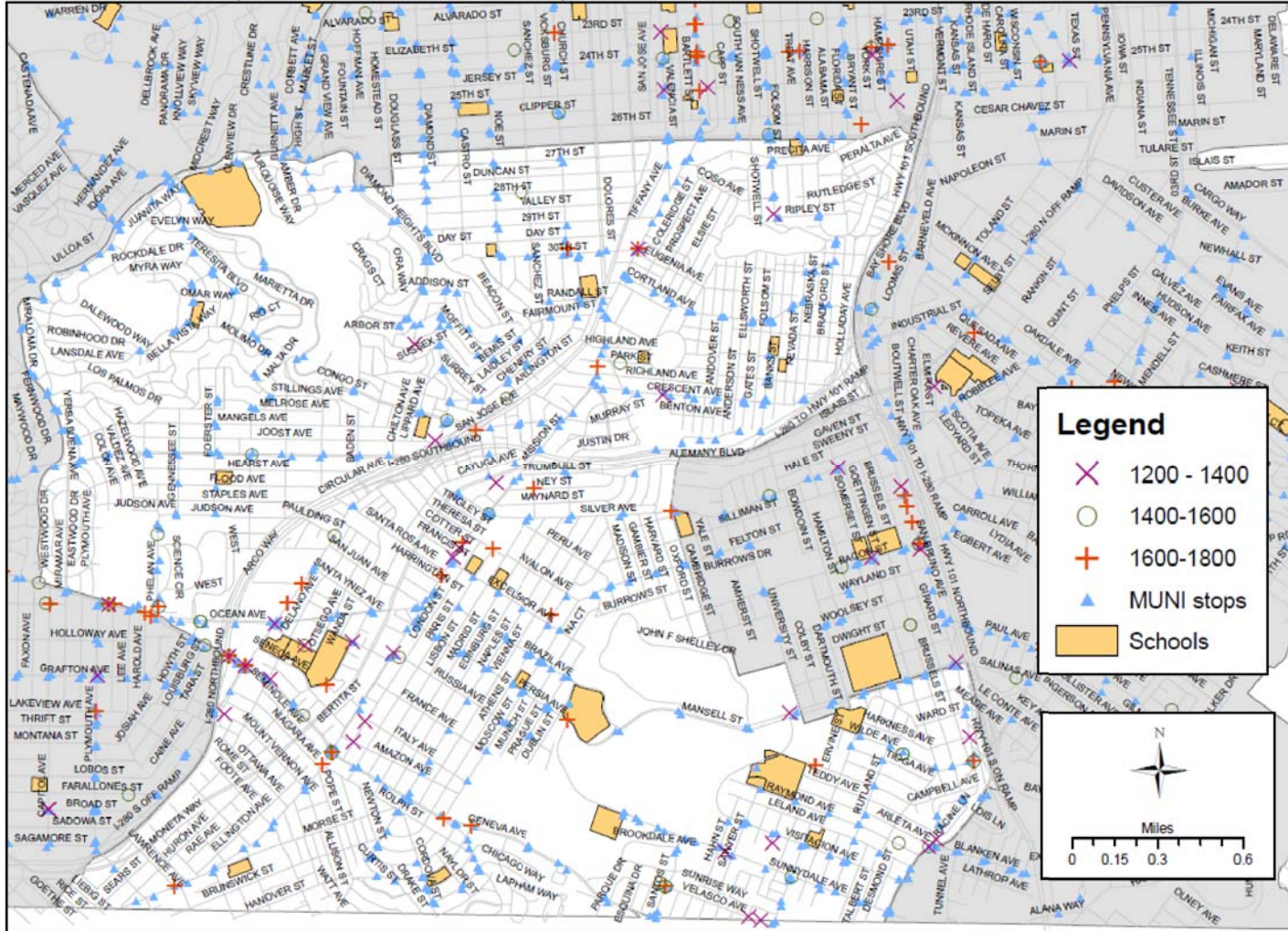
Ingleside Incidents by Intersection

	Last Month	To Date
Mission & Silver	1	8
Geneva & Mission	0	8
Geneva & Santos	0	5
Mission & Persia	1	5
30th & Mission	0	4
Britton & Visitacion	0	3
Mission & Russia	0	3
Randall & San Jose	0	3
Santos & Velasco	0	3
Bosworth & Diamond	0	3

Muni Incident Summary

Muni incidents, last month - 5
Muni incidents to date - 120

Source: Oracle Incident Reporting System



San Francisco Police Department | Contact Ron Filion, Ron.Filion@sfgov.org

Sources: CrimeServer-SFPD, SFdata.org

Crime Map of Ingleside District Robberies

San Francisco Quarterly Muni Crime Report

3-Month Combined Summary

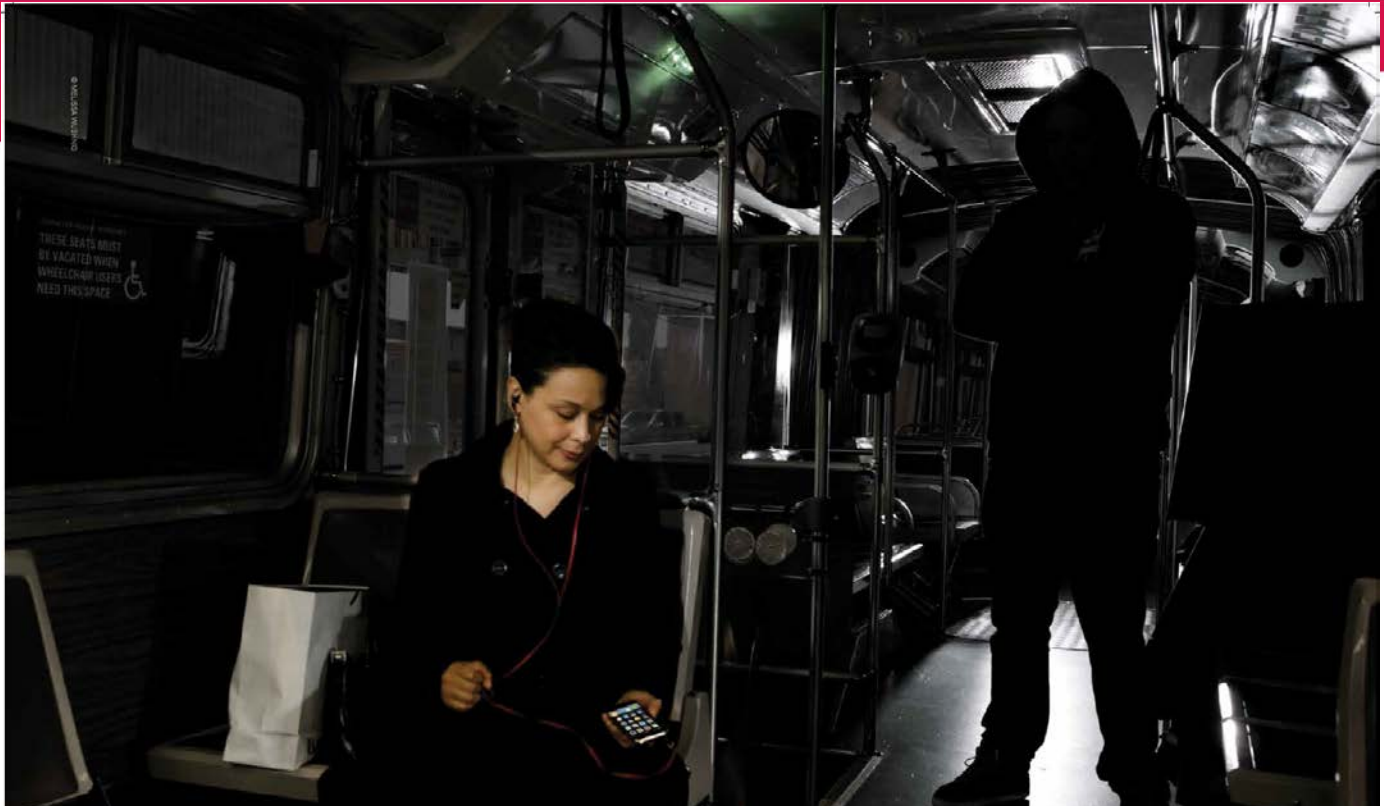
Q2 FY2013 - OCT., NOV., & DEC. 2012				
Incidents Related to Muni/MTA Locations				
Crime Category	OCT.- DEC. 2011 Incidents	OCT.- DEC. 2012 Incidents	Number Change in Incidents, Q2 2013 vs Q2 2012	Percent Change in Incidents, Q2 2013 vs Q2 2012
Part I Crimes				
Aggravated Assault	11	18	7	63.64%
Burglary	2	0	-2	-100.00%
Larceny	88	161	73	82.95%
Personal/Other Theft	3	13	10	333.33%
Robbery	59	82	23	38.98%
Other	0	2	2	N/A
Total Part I Crimes	163	276	113	69.33%
Part II Crimes				
Graffiti/Vandalism	9	12	3	33.33%
Other	66	64	-2	-3.03%
Total Part II Crimes	75	76	1	1.33%
Unknown	0	0	0	N/A
Grand Total All Crimes	238	352	114	47.90%

2012 Cell Phone Crime Statistics

Stolen Cell Phones* MUNI 2012

	Jan	Feb	Mar	Apr	May	Jun	Jul	Aug	Sep	Oct	Nov	Dec	Totals
Central - Comp A	2	1	2	2	2	6	7	4	8	5	4	4	47
Southern - Comp B	2	1	7	2	3	5	10	8	10	8	13	14	83
Bayview - Comp C	5	7	0	2	2	4	3	3	4	6	4	5	45
Mission - Comp D	2	0	0	1	1	2	2	1	5	5	5	4	28
Northern - Comp E	7	3	2	5	7	2	6	7	9	4	9	4	65
Park - Comp F	1	0	2	1	0	1	1	0	0	2	2	1	11
Richmond - Comp G	5	0	1	0	0	0	1	1	1	1	5	2	17
Ingleside - Comp H	7	1	3	5	4	3	4	4	4	4	5	4	48
Taraval - Comp I	2	2	1	1	2	1	4	3	2	7	2	1	28
Tenderloin - Comp J	0	4	2	0	1	0	2	3	5	5	2	3	27
Traffic - Comp K	0	0	0	0	0	0	0	0	0	0	0	0	0
2012 TOTAL	33	19	20	19	22	24	40	34	48	47	51	42	399

*Does not include I-pads and laptops.



Be smart with your Smartphone

Most Muni crimes are crimes of opportunity. Don't give thieves a chance.

Always keep smartphones, portable electronic devices and all valuables out of sight.

精明擅用您的智能手機。

大多數的Muni 罪案都是乘機犯罪。請勿讓竊賊逮到任何機會。保持智能手機、便攜式電子及貴重物品遠離視線範圍。

Sea inteligente con su móvil Smartphone.

La mayoría de crímenes en el Muni son crímenes de oportunidad.

No les dé una oportunidad a los ladrones.

Siempre mantenga los móviles Smartphone, dispositivos electrónicos portátiles y objetos de valor fuera de la vista.



Thieves know an opportunity when they see it

Most Muni crimes are crimes of opportunity. Don't give thieves a chance.

Remain alert and aware of your surroundings. Keep all valuables out of sight.

竊賊看到有機可乘的時候就會下手。

大多數的Muni 罪案都是乘機犯罪。請勿讓竊賊逮到任何機會。時刻保持警覺並留意您周圍的環境。請將所有貴重物品收好。

Los ladrones conocen una oportunidad cuando la ven.

La mayoría de crímenes en el Muni son crímenes de oportunidad. No les dé una oportunidad a los ladrones. Permanezca alerta y dese cuenta de sus alrededores. Mantenga las cosas de valor fuera de vista.

Siempre mantenga los teléfonos móviles inteligentes, dispositivos electrónicos portátiles y objetos de valor fuera de la vista.

Resources Assigned to SFMTA

- **SFPD Muni Response Team (MRT- Funded by SFMTA)**
 - a) Currently comprised of (1) Lieutenant, (1) Sgt. and (7) Officers (uniformed)
 - b) Primary responsibility is order maintenance on the Muni Metro Rail System (robbery, graffiti, public intoxication abatement, etc.)
 - c) Secondary responsibility is to assist Transit Fare Inspectors during saturations of fare evasion inspections

Additional Resources Assigned to SFMTA

- **SFPD Muni TSA K-9 Unit**
 - a) Currently comprised of uniformed (1) K-9 Sgt. and (4) K-9 Teams
 - b) Primary responsibility is the inspection of the Muni Metro Rail System for suspicious packages and devices
 - c) Secondary responsibility is to assist in order maintenance on the Muni Metro Rail System (robbery, graffiti, public intoxication abatement, etc.)

Additional Resources assigned to SFMTA

SFPD Muni Task Force (MTF- Funded by FEMA/TSA Grant)

- a) Currently staffed with (1) Sgt. and (7) plainclothes officers
- b) Primary duty- Target the most problematic coach, rail or trolley lines based on crime statistics
- c) Conduct a variety of plainclothes enforcement operations that include: robbery abatement decoy operations, vandalism operations, pick pocket operations, supporting the District Stations Investigative Teams with follow-up investigations and to locate individuals wanted for committing crimes on SFMTA properties and/or vehicles

Targeted Enforcement Operations

- Robbery Abatement Operations
 - as needed with affected districts
- “SFMTA Sober Muni Shelter” Operation
 - with CHP and Traffic Company
- “SFMTA Safe Lines” Fugitive Operation
 - Bi-monthly within alternating districts
- “SFMTA Taxi & Limousine Enforcement”
 - Weekly enforcement using decoys

Operation Safe Muni: Tenderloin

~ February 2013 ~						
Sun	Mon	Tue	Wed	Thu	Fri	Sat
					1 Periodic thru Watches TOSS Program 5- Fulton	2 BIP'S Periodic thru Watches TOSS Program
3 BIP'S Periodic thru Watches TOSS Program	4 BIP'S Periodic thru Watches TOSS Program 31- Balboa	5 BIP'S Periodic thru. Watches TOSS Program 5- Fulton	6 BIP'S Periodic thru. Watches TOSS Program 38 Geary/Pickpocket	7 BIP'S Periodic thru. Watches TOSS Program 31- Balboa	8 Periodic thru Watches TOSS Program 5- Fulton	9 BIP'S Periodic thru Watches TOSS Program
10 BIP'S Periodic thru Watches TOSS Program	11 BIP'S Periodic thru Watches TOSS Program 31- Balboa	12 BIP'S Periodic thru. Watches TOSS Program 5- Fulton	13 BIP'S Periodic thru. Watches TOSS Program 38 Geary/Pickpocket	14 BIP'S Periodic thru. Watches TOSS Program 31- Balboa	15 Periodic thru Watches TOSS Program 5- Fulton	16 BIP'S Periodic thru Watches TOSS Program
17 BIP'S Periodic thru Watches TOSS Program	18 BIP'S Periodic thru Watches TOSS Program 31- Balboa	19 BIP'S Periodic thru. Watches TOSS Program 5- Fulton	20 BIP'S Periodic thru. Watches TOSS Program 38 Geary/Pickpocket	21 BIP'S Periodic thru. Watches TOSS Program 31- Balboa	22 Periodic thru Watches TOSS Program 5- Fulton	23 BIP'S Periodic thru Watches TOSS Program
24 BIP'S Periodic thru Watches TOSS Program	25 BIP'S Periodic thru Watches TOSS Program 31- Balboa	26 BIP'S Periodic thru. Watches TOSS Program 5- Fulton	27 BIP'S Periodic thru. Watches TOSS Program 38 Geary/Pickpocket	28 BIP'S Periodic thru. Watches TOSS Program 31- Balboa	Notes: Tenderloin station/ Co. J / Monthly MTA-MUNI Plan Cable Car Turn-Around: Powell & Market –High Uniform Visibility T.O.S.S. "Theft of Service Survey" (127c TC & 640(b)(1) PC Pickpocket Abatement -38 Geary Street – Outbound Graffiti Abatement 31- Balboa & 5- Fulton Bus Lines	



Questions