



**SFMTA**  
Municipal  
Transportation  
Agency

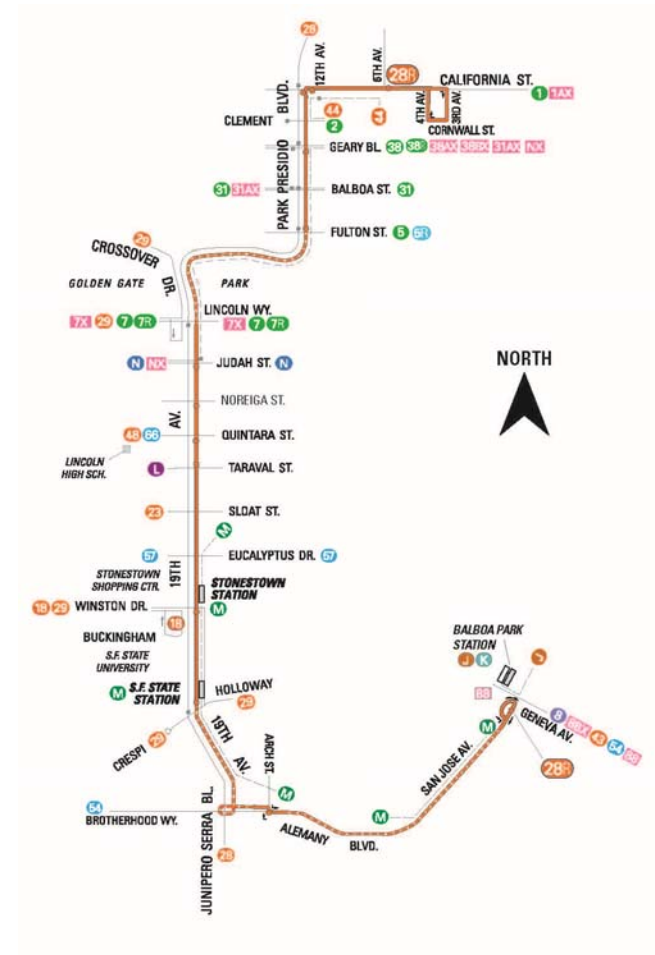
# 28R Terminal

## Geneva Avenue/San Jose Avenue

Tuesday, May 23, 2017  
Balboa Park Station CAC

# Muni 28R – 19<sup>th</sup> Avenue Rapid Line

- Modified in 2016
  - Provide service Monday-Friday, 7:00 am – 7:00 pm
  - Route realignment
  - Potential future integration with GHBRT



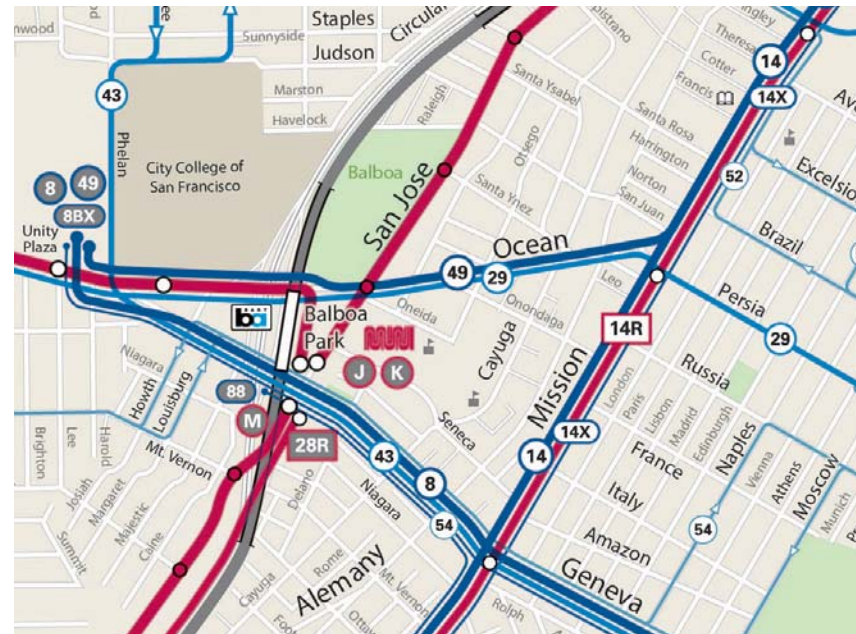
# Muni 28R – 19<sup>th</sup> Avenue Rapid Line

- Terminal
  - Originally on Alemany Blvd at Geneva Ave
  - Required multiple turns
    - Time consuming and unreliable
  - Numerous collisions at the terminal zone

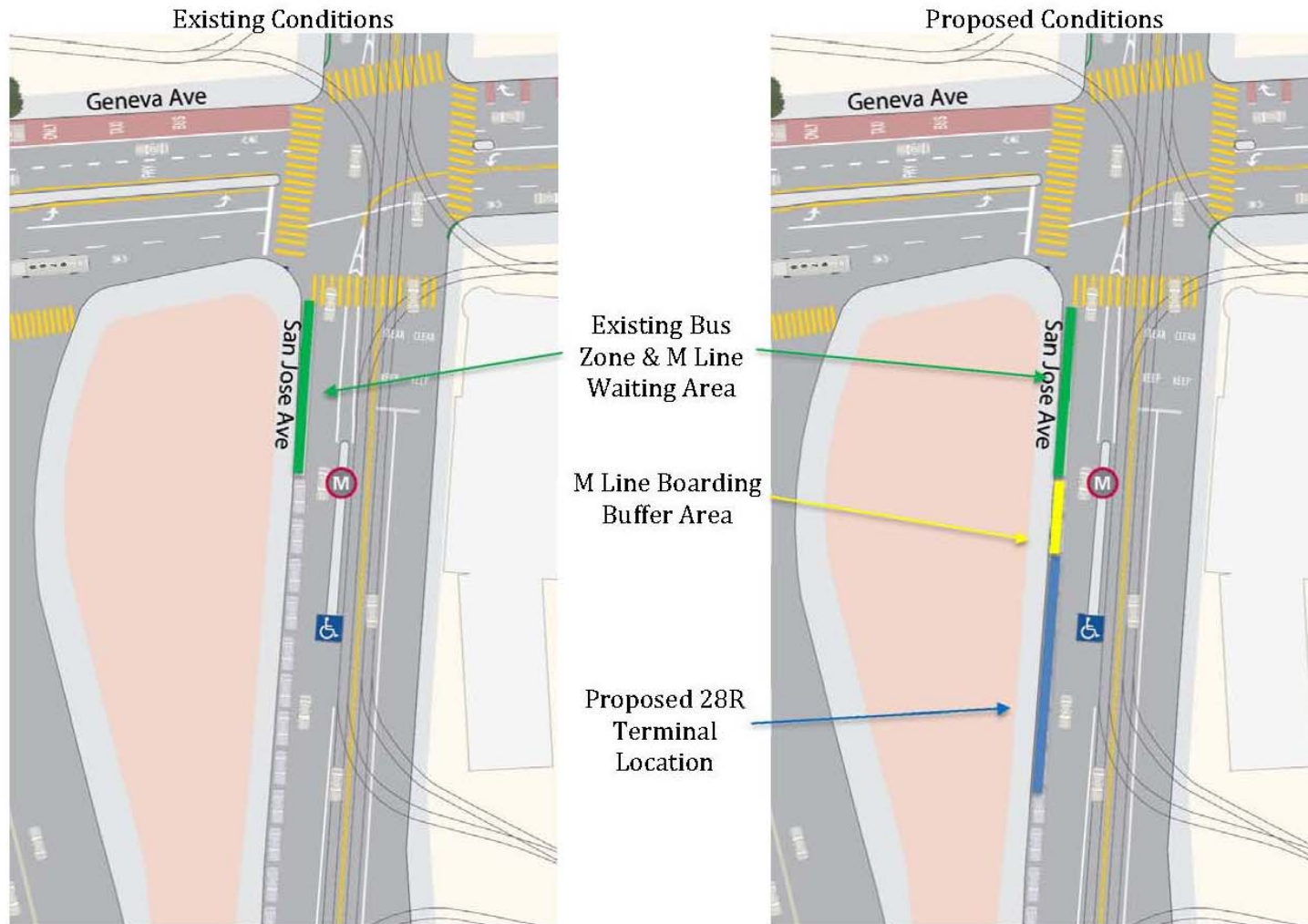


# Muni 28R – 19<sup>th</sup> Avenue Rapid Line

- February 2017
  - Adjusted to terminate at Balboa Park Station
  - Served by overlapping lines



# Muni 28R – 19<sup>th</sup> Avenue Rapid Line



# Muni 28R – 19<sup>th</sup> Avenue Rapid Line

- Terminal Location
  - Proposed on San Jose south of Geneva
  - Community members requested additional conversations on the original proposal
  - In response to community comments, the proposed zone has been shorted
  - Zone would be 7am-7pm Monday-Friday
    - General parking at all other times
  - BART has allowed temporary use of Kiss & Ride for the layover



# Muni 28R – 19<sup>th</sup> Avenue Rapid Line



# Muni 28R – 19<sup>th</sup> Avenue Rapid Line





# Muni 28R – 19<sup>th</sup> Avenue Rapid Line

- Adjacent Projects

- Coordinating with Geneva/San Jose Intersection Study, Upper Yard, BART K&R, GHBRT
- Possibility of future 28R terminal modifications based on the outcome/needs of other projects

# Muni 28R – 19<sup>th</sup> Avenue Rapid Line

Thank you!

Tony Henderson, PE, PTOE  
tony.Henderson@sfmta.com