

An aerial photograph of San Francisco, showing the dense urban landscape and the city skyline. The image is overlaid with a semi-transparent teal color. The text is white and positioned in the upper right quadrant.

ConnectSF

SFMTA Board Of Directors
September 19th, 2017

connectsf@sfgov.org

connectsf.org

San Francisco Planning



SFMTA
Municipal
Transportation
Agency

About the Project

- **Future scenarios** that help SF better prepare for change
- **50-year transportation vision** to align efforts between separate city agencies
- **Prioritization framework** to turn vision into actual projects
- **Greater public and political support** around choices and tradeoffs ahead for transportation and land use

About the Project

ConnectSF is a multi-agency process to build an effective, equitable and sustainable transportation system for San Francisco's future



Equity



**Economic
Vitality**

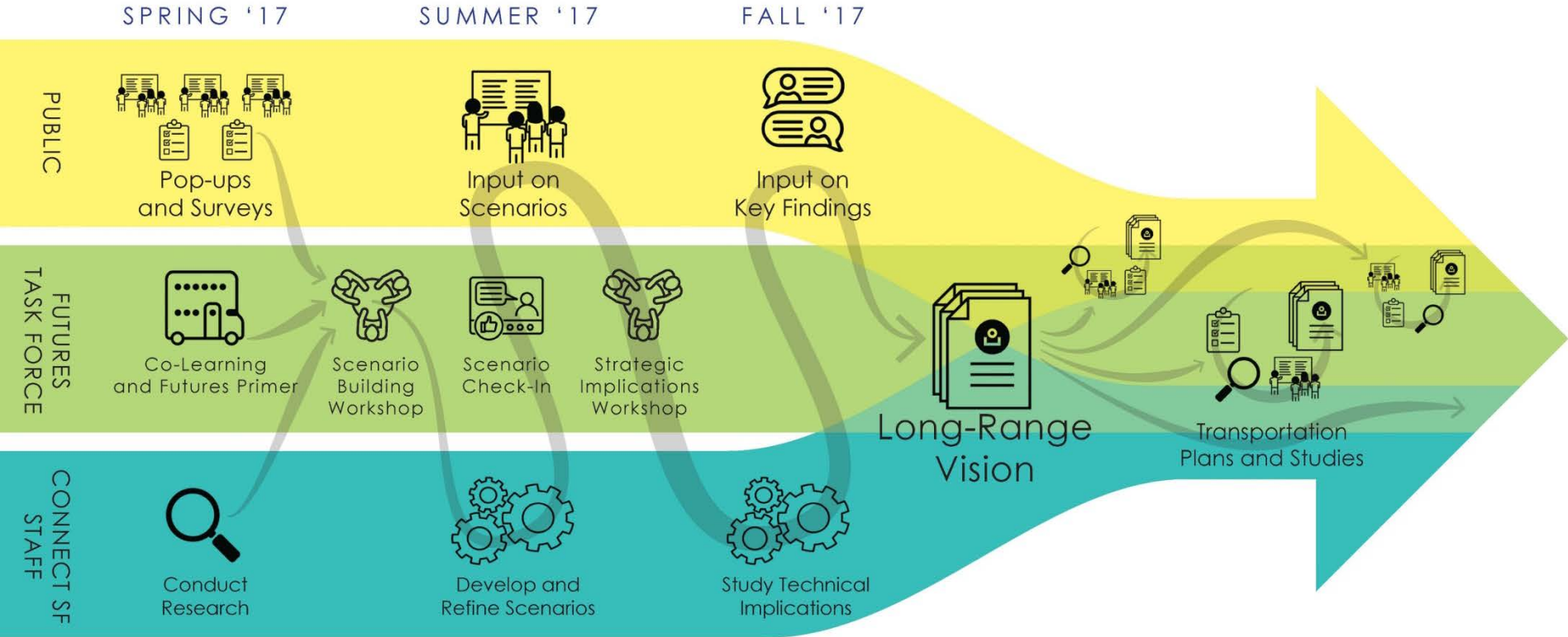


**Safety and
Livability**



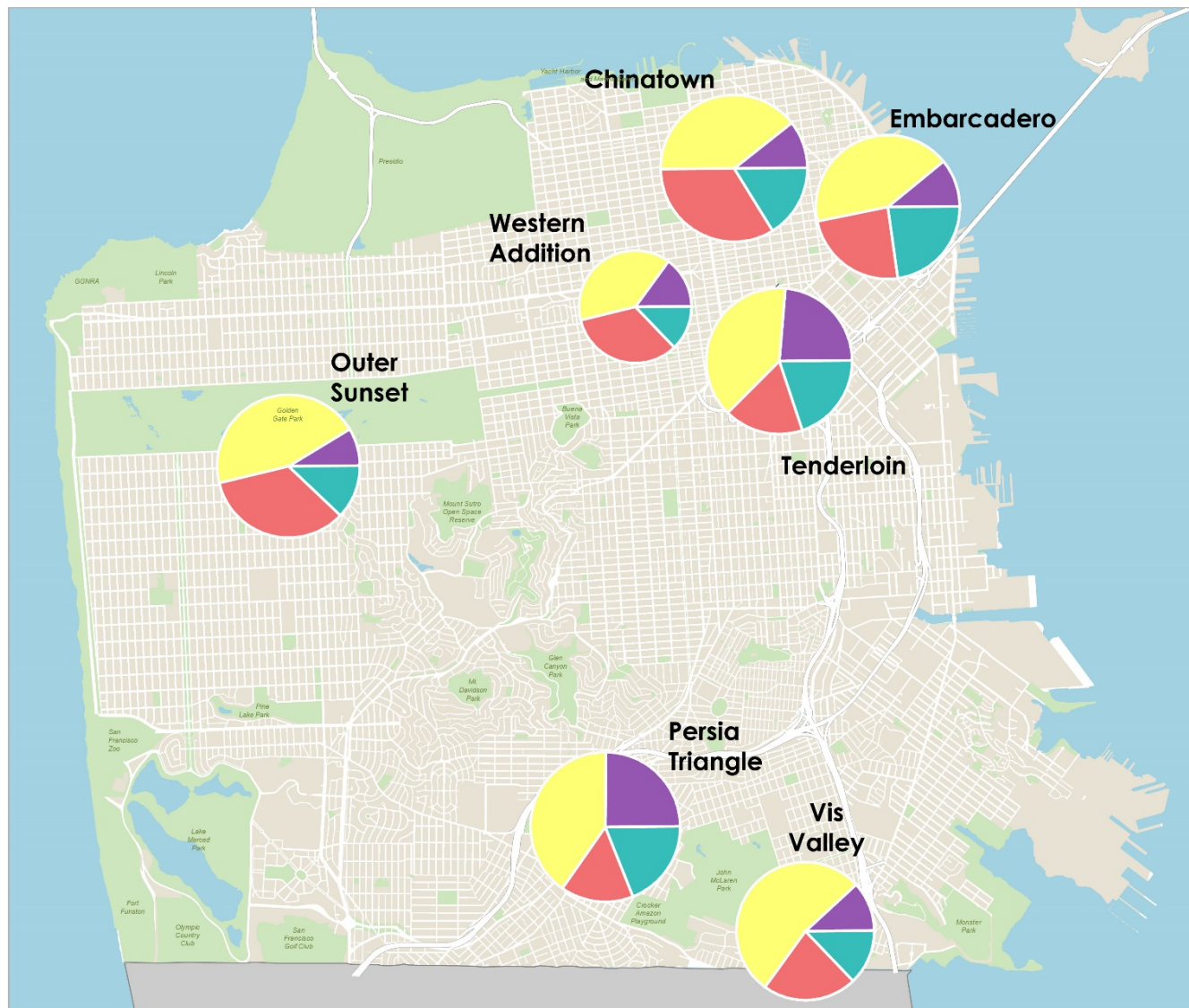
**Environmental
Sustainability**

ConnectSF Process



- Modal Studies
- SF Transportation Plan
- Transportation Element

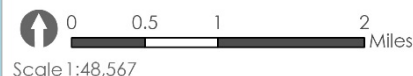
Pop-Ups: Core Values by Location



Connect SF Pop-up Summary June 2017

550 Responses

- Equity
- Safety and Livability
- Economic Vitality
- Environmental Sustainability



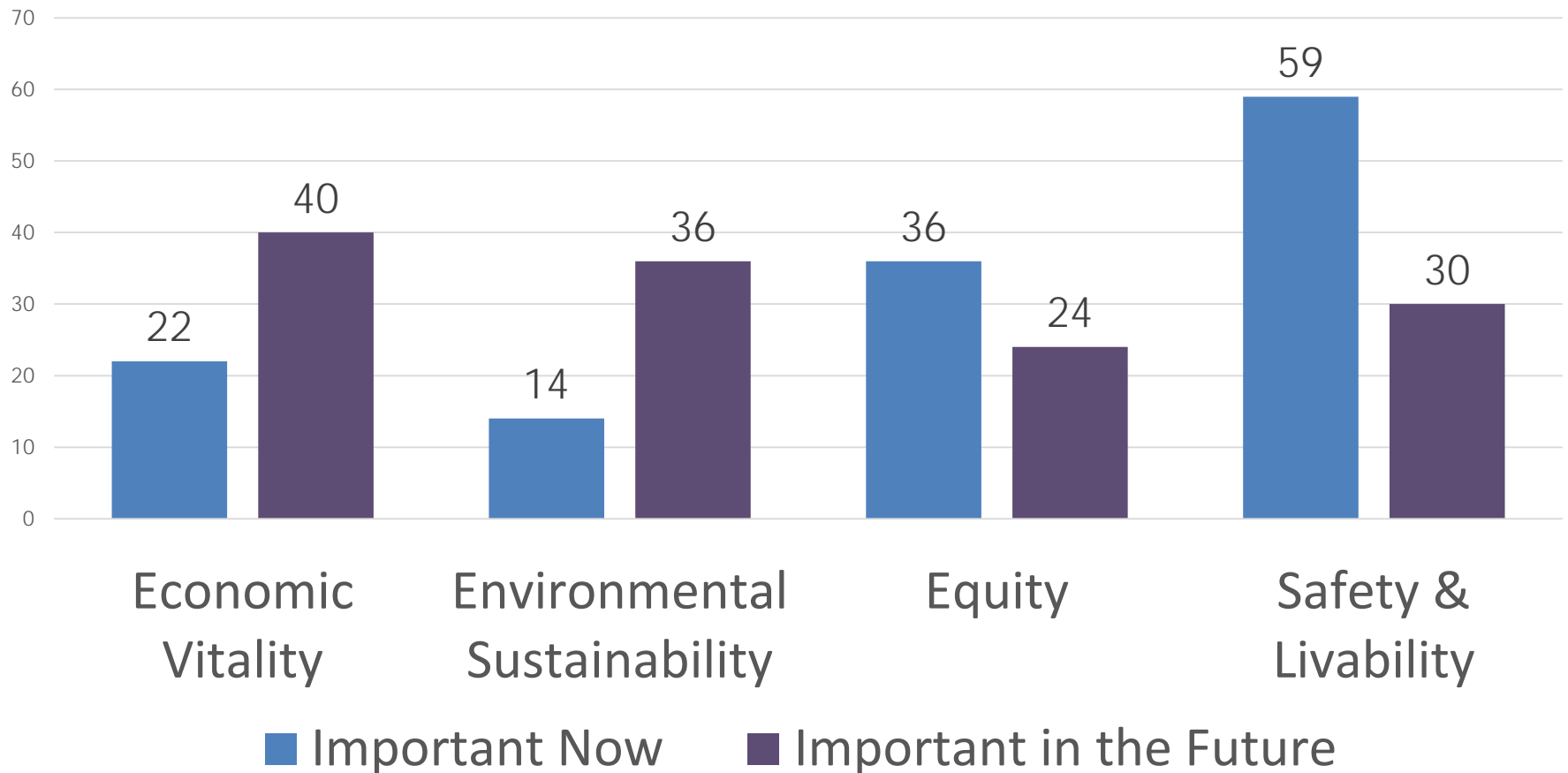
By downloading this map, you are agreeing to the following: San Francisco ("City") provides the following data as a public good to any person by the City's provision of this data. The City makes no representation regarding and does not guarantee or warrant the completeness of this data. Anyone who uses this data for their own risk. The City shall not be liable or otherwise responsible for any loss, harm, claim or action of any kind from any person arising from the use of this data. By accessing this data, the person accessing it acknowledges that she or he has read and does so under the condition that she or he agrees to the

ConnectSF

Online Survey: Guiding Principles

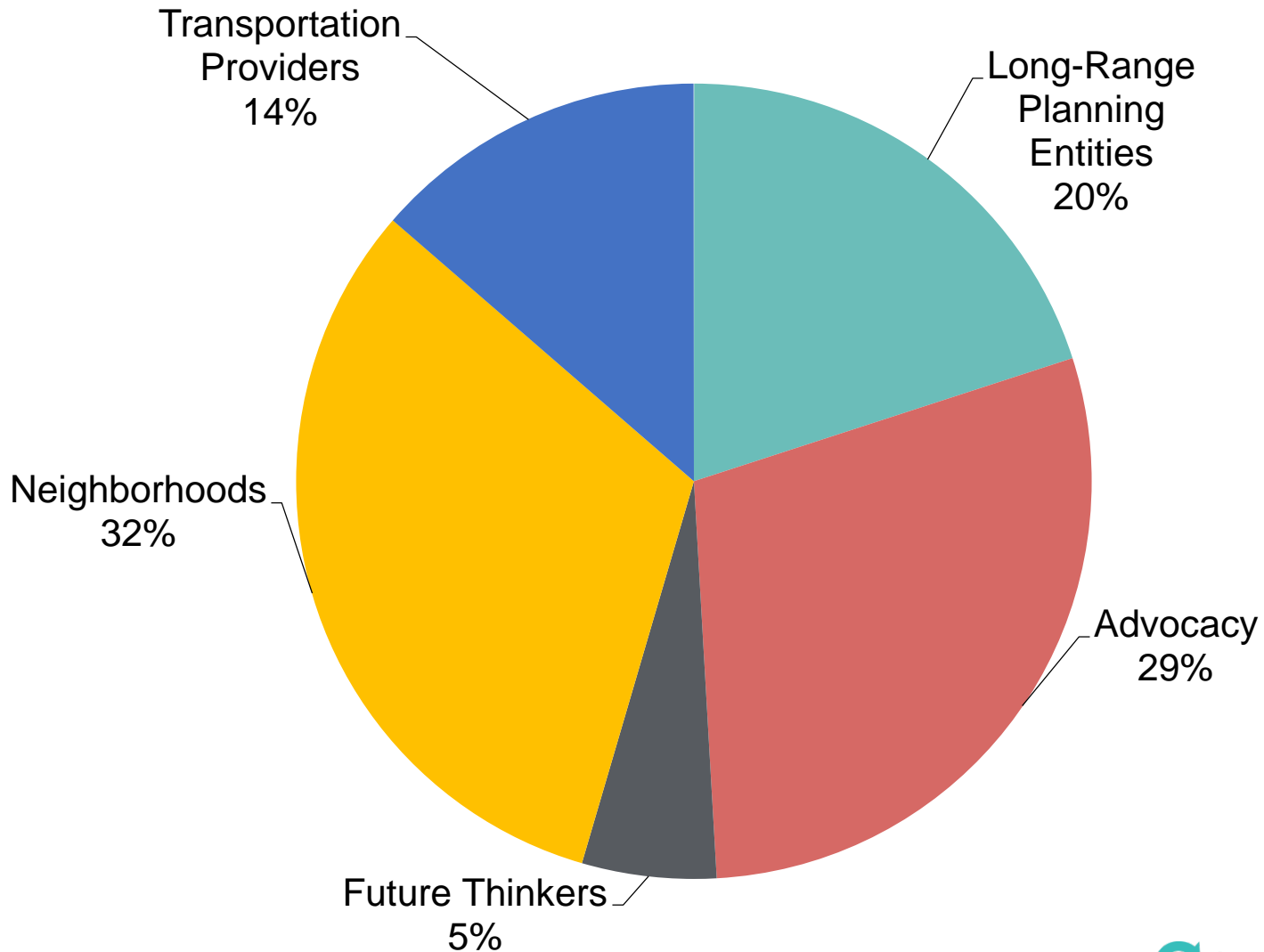
Now and in the Future

Importance of Guiding Principles



Who is the Futures Task Force?

110 total



What about other Perspectives?

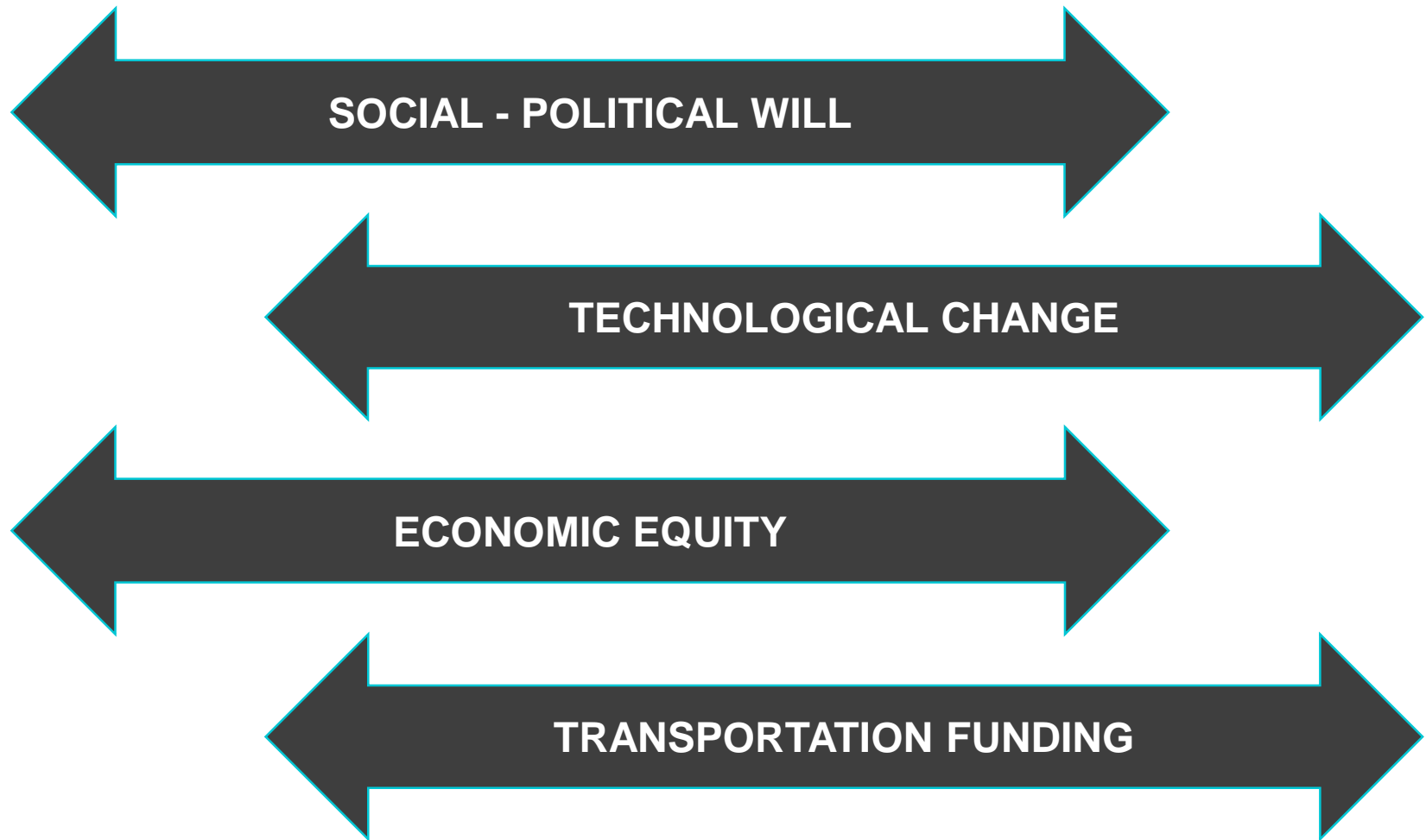
- **10+ Small Group Experiences**
- **One-on-one briefings**
- **Presentations at organization meetings**
- **Online Survey**



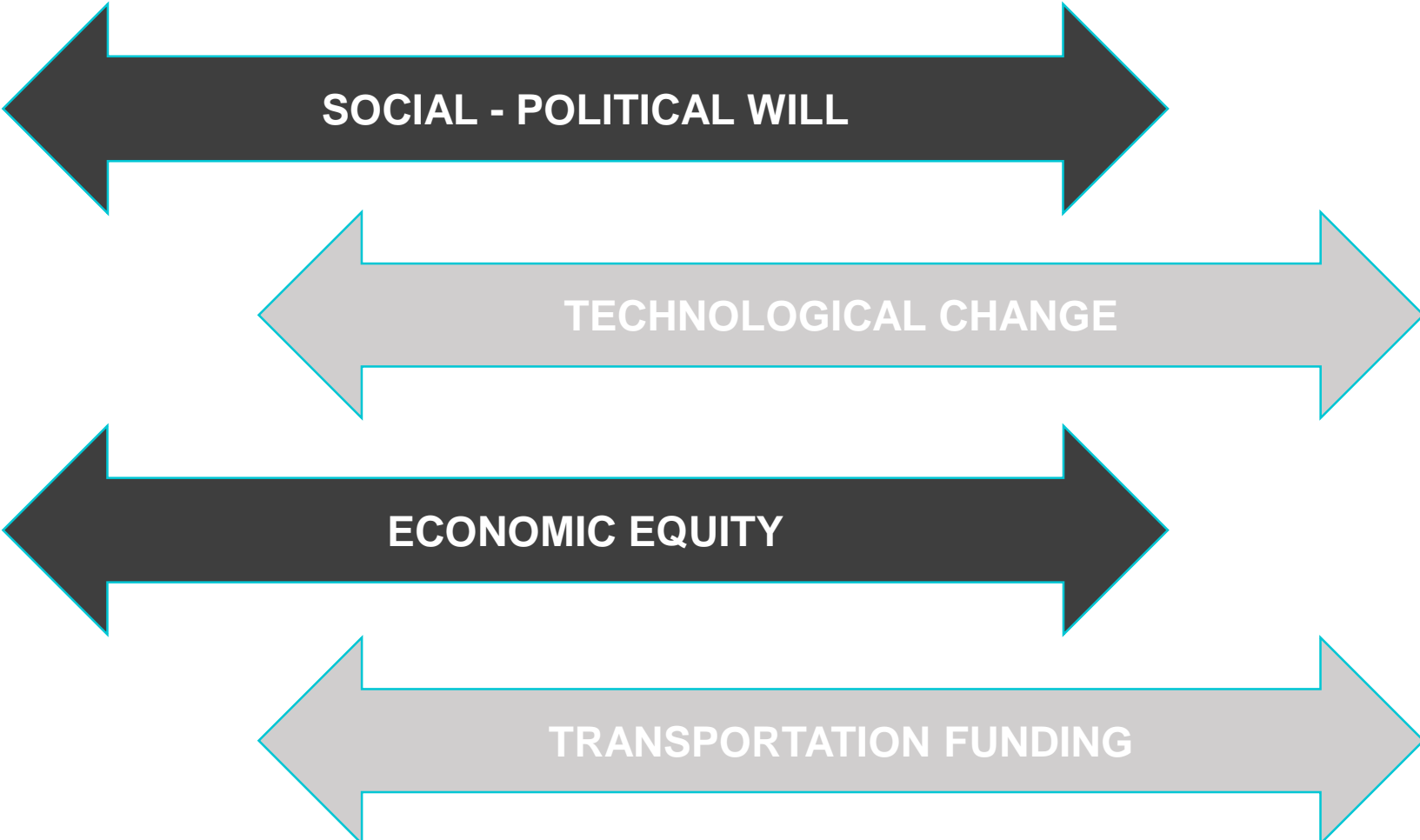
Drivers of Change

ConnectSF Givens	ConnectSF Uncertainties
<ul style="list-style-type: none">• Climate change, resource scarcity, and natural disasters• Demographics and regional growth• Earthquake risk• Aging infrastructure• Public distrust in government• Rapid technological change	<ul style="list-style-type: none">• <i>Regional Economy</i>• <i>Governance</i>• <i>21st Century Infrastructure</i>• <i>Changing Mobility Landscape</i>• <i>Public Health Influences</i>• <i>Lifestyle Choices and Values</i>• <i>San Francisco's Adaptive Capacity</i>• <i>Inequality and Polarization</i>

Drivers of Change



Drivers of Change



Scenario Criteria

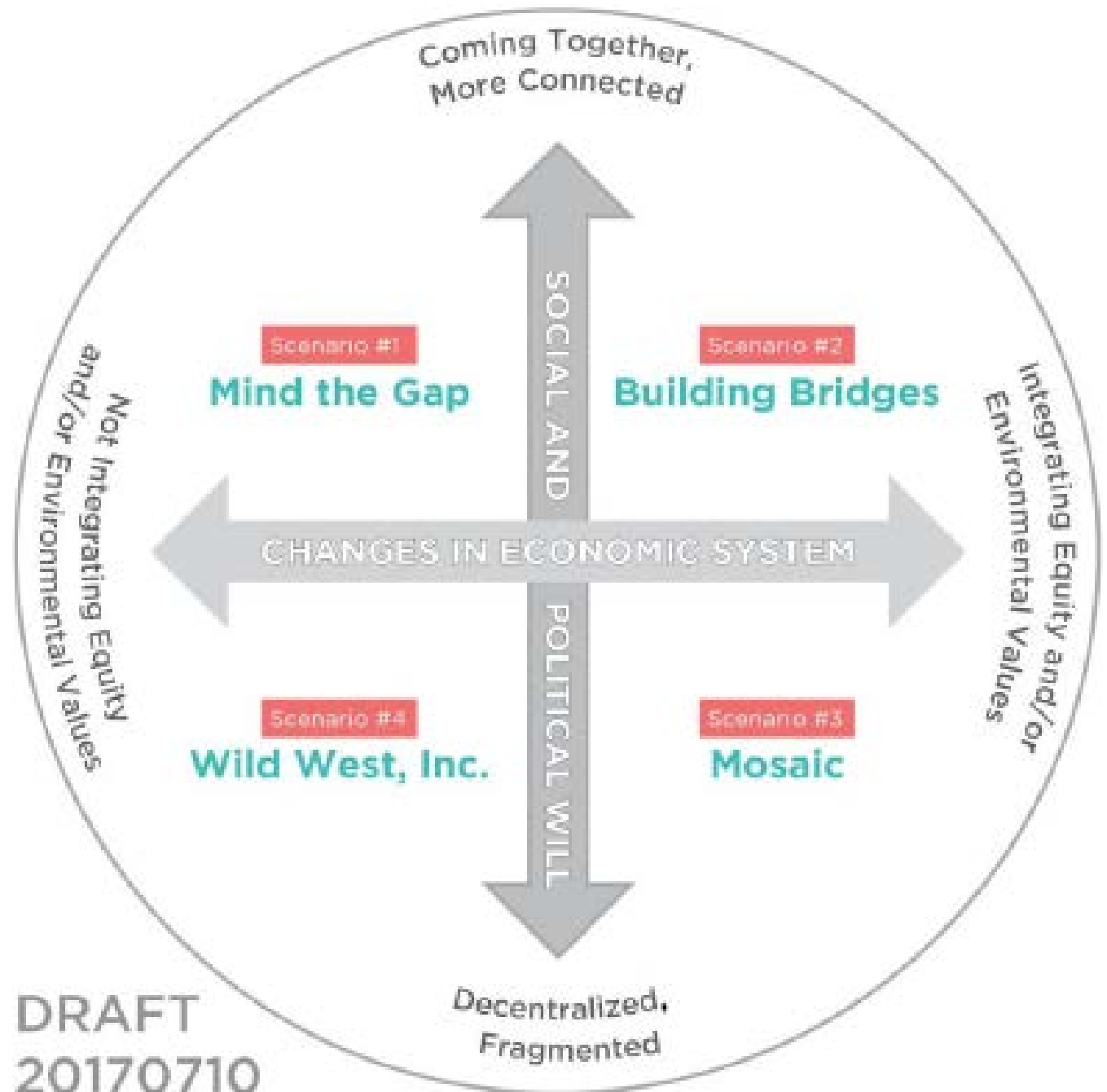
What makes good scenarios?

1. **Plausible** but not probable remember reality is stranger than fiction!
2. **Relevant** to the focal issue and our strategic issues
3. **Divergent** they must be different from each other
4. **Challenging** some challenge to Conventional Wisdom
5. **Compelling** and memorable stories so that they can travel widely

“The test of a good scenario is not whether it portrays the future accurately, but whether it enables an organization to learn and adapt.”

-Peter Schwartz, The Art of the Long View

Current Scenario Matrix



Next Steps

- Community outreach July – October
- Focus groups August – September
- **Online survey** **September**
- Strategic Implications Workshop (Task Force) October 4
- Boards and Commissions September – December
- Draft Vision Report January 2018

Key Upcoming Studies (2018-2020)

- **Modal Concept Study**
to be updated by *SFMTA*
- **Countywide Transportation Plan 2050**
to be updated by the *County Transportation Authority*
- **General Plan Transportation Element**
to be updated by the *Planning Department*

An aerial photograph of San Francisco, California, showing the city's dense urban landscape and the San Francisco Bay. The image is overlaid with a semi-transparent teal color. The text is centered and white.

Thank you!

connectsf@sfgov.org

connectsf.org

ConnectSF