



**SFMTA**  
Municipal  
Transportation  
Agency

# Commuter Shuttle Program

SFMTA Board of Directors  
November 17, 2015

# Commuter Shuttles Program

- Shuttles history/background
- Commuter Shuttle Pilot Program
  - Timeline
  - Evaluation results
- Proposed Commuter Shuttle Program
  - Using the Evaluation
  - Building upon the Pilot Program

# Commuter Shuttles in the Bay Area

- Commuter shuttles around for decades
- Silicon Valley shuttles grew out of:
  - Transportation demand management requirements of Silicon Valley cities
  - Jobs/housing imbalance in Silicon Valley
- Shuttles serve entire Bay Area
  - East Bay
  - North Bay
  - Stops along the Peninsula after SF

# Commuter Shuttles in San Francisco

- By law, shuttles free to use the city's streets
  - Free to stop in white zones and available curb space
  - Can only be regulated or managed
- Increasing presence on city's streets
- Growing commute choice for many San Franciscans

# Commuter Shuttle Pilot Program

- Manage/regulate commuter shuttle sector
- Network of shared Muni and white zones
- Permit fees and conditions for participation
- Targeted enforcement
- Extensive data collection
- Evaluation

# Commuter Shuttle Pilot Program

- Launched August 2014
- Data collection complete June 2015
- Evaluation Report released October 2015
- Pilot concludes January 2016

# Pilot Evaluation Report

- Shuttle activity overview
- Shuttles' impact on drive-alone trips
- Traffic impacts and safety issues
- Enforcement
- Community response
- Project administration

# Shuttle activity

## Shuttle stop-events





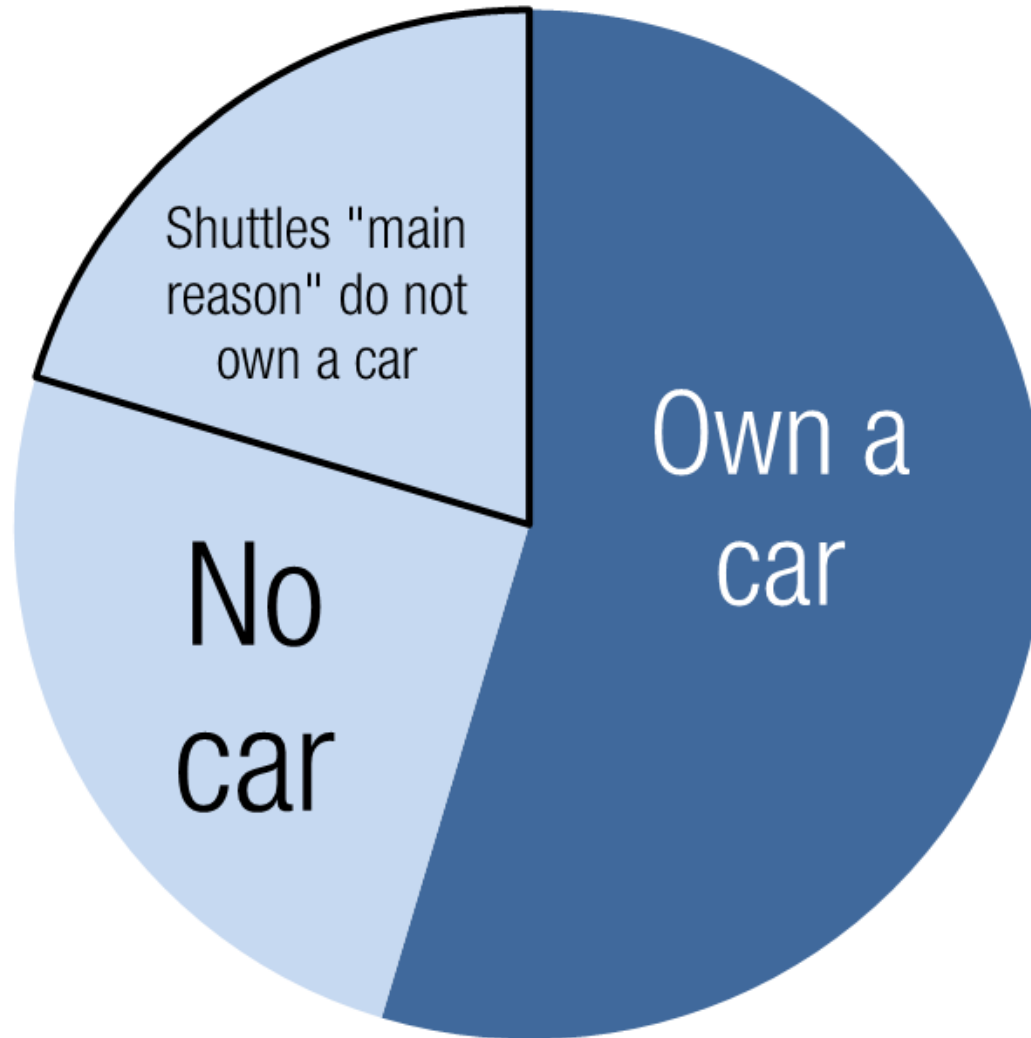
# Shuttle activity

## Shuttle ridership



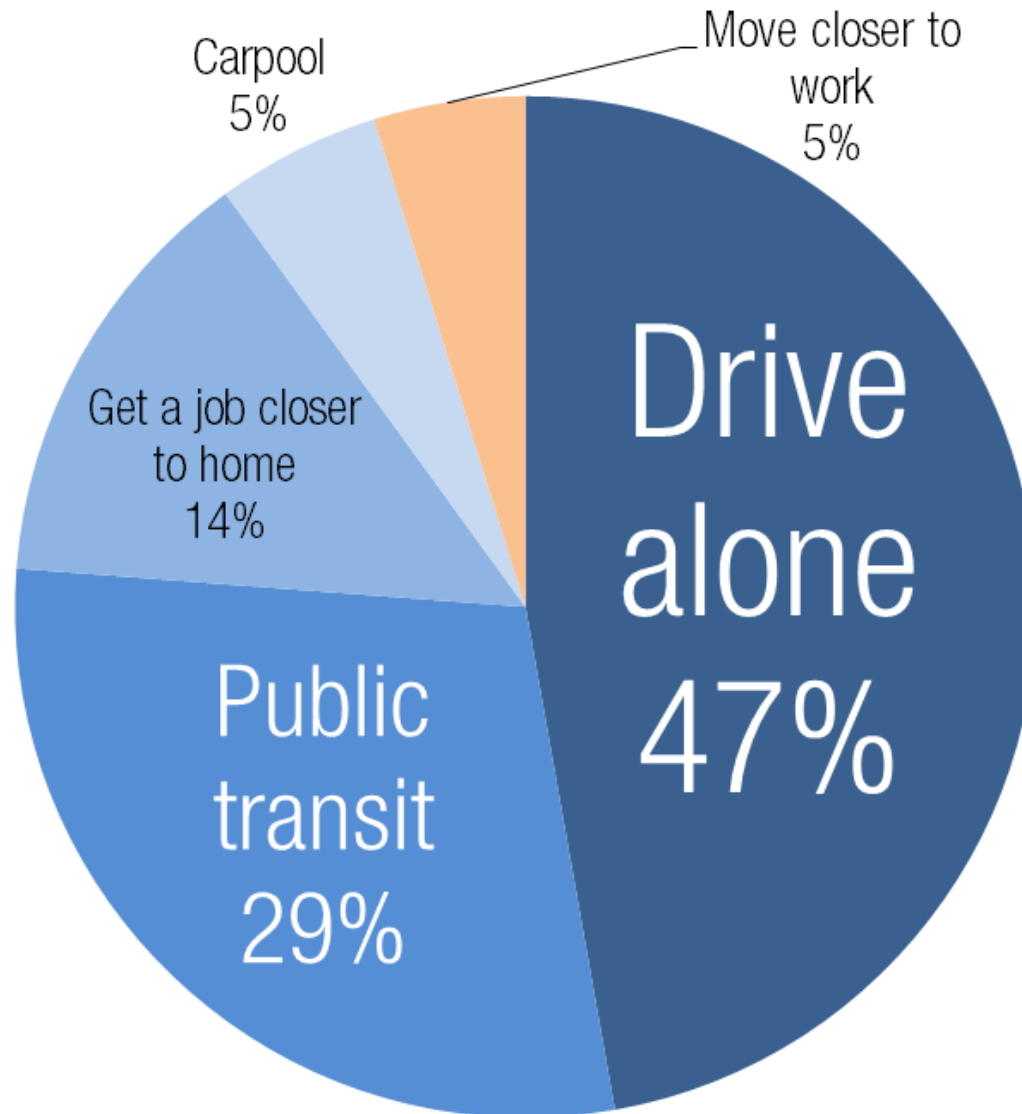
# Impact on drive-alone trips

## Riders' transportation choices



# Impact on drive-alone trips

## Riders' transportation choices



# Impact on drive-alone trips

## Reduced car trips and VMT



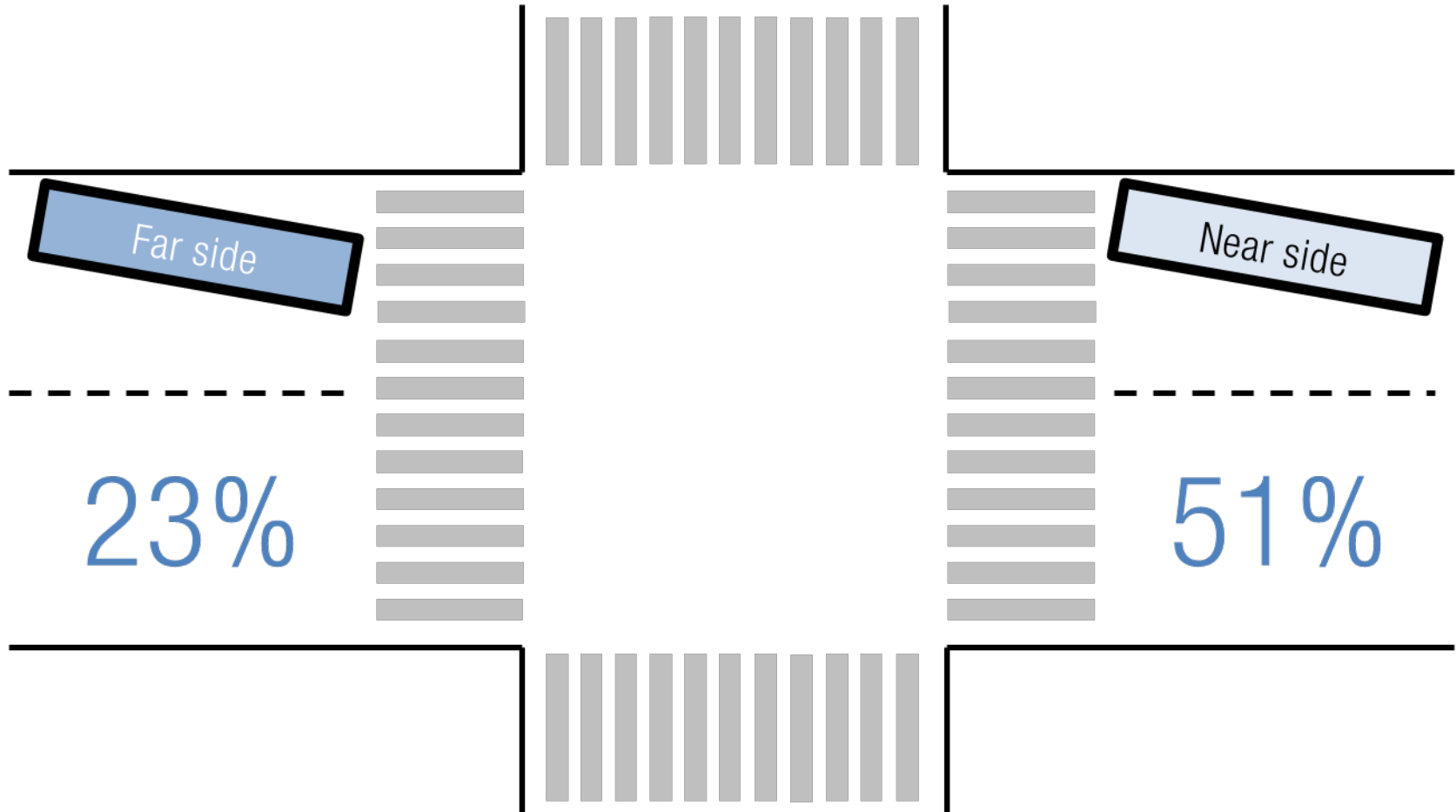
# Traffic impacts and safety issues

## Shuttle and Muni interaction



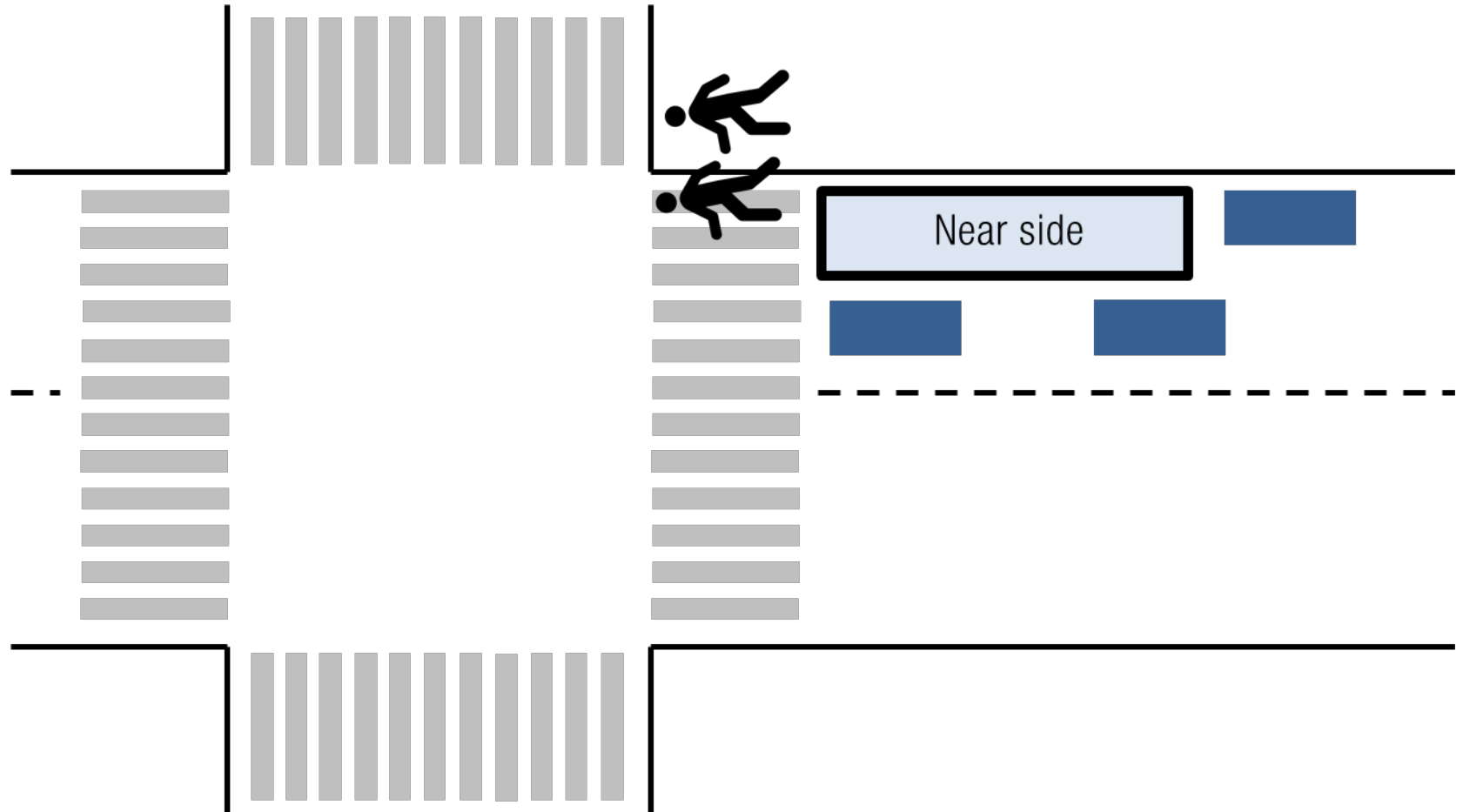
# Traffic impacts and safety issues

## Traffic and bike lane safety



# Traffic impacts and safety issues

## Pedestrian safety



# Enforcement

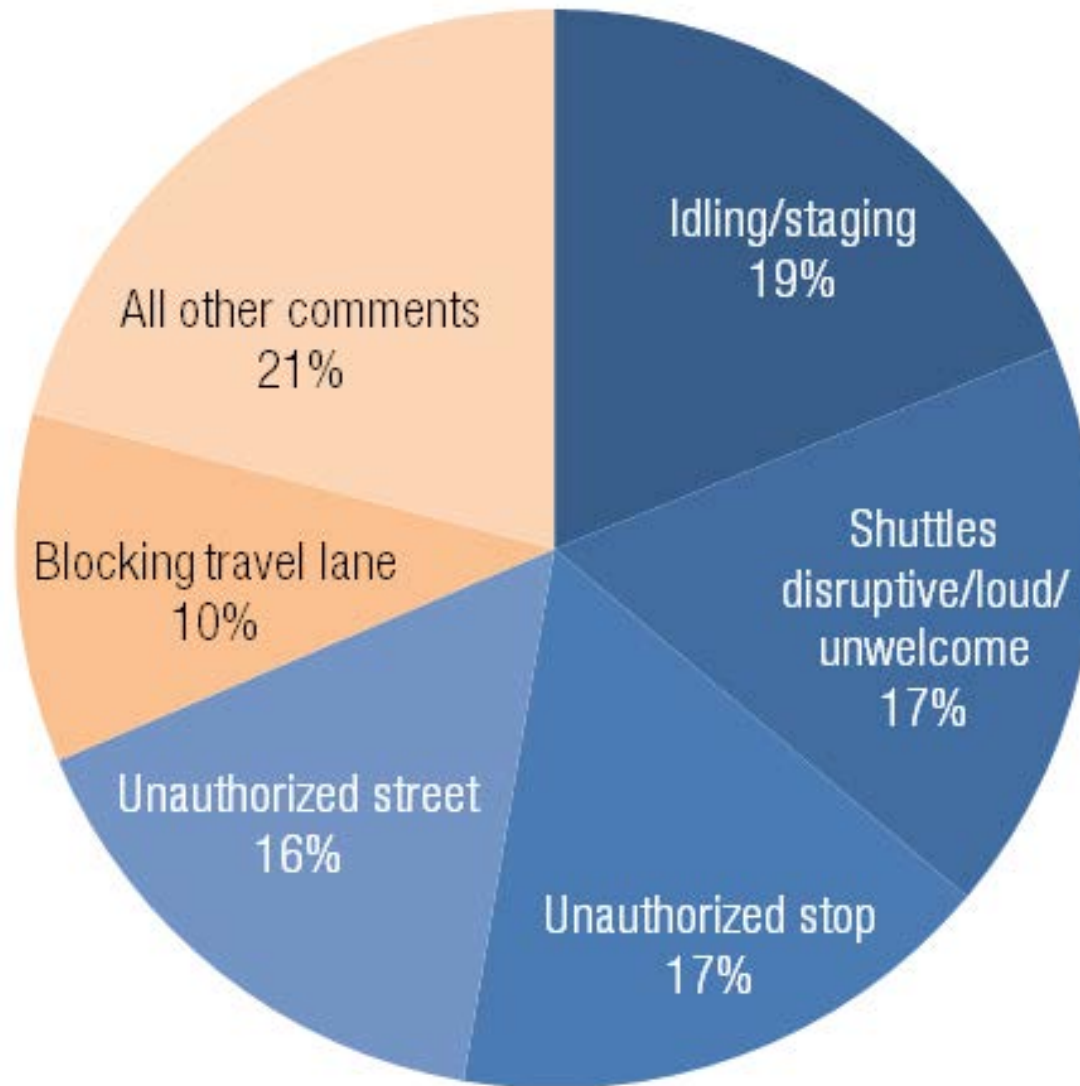
## Citations issued





# Community response

## Feedback on commuter shuttles



# Project administration

## Regulatory program and data sharing

- Regulatory/permit approach
- Enforcement challenges
- GPS data sharing

# Commuter Shuttle Program

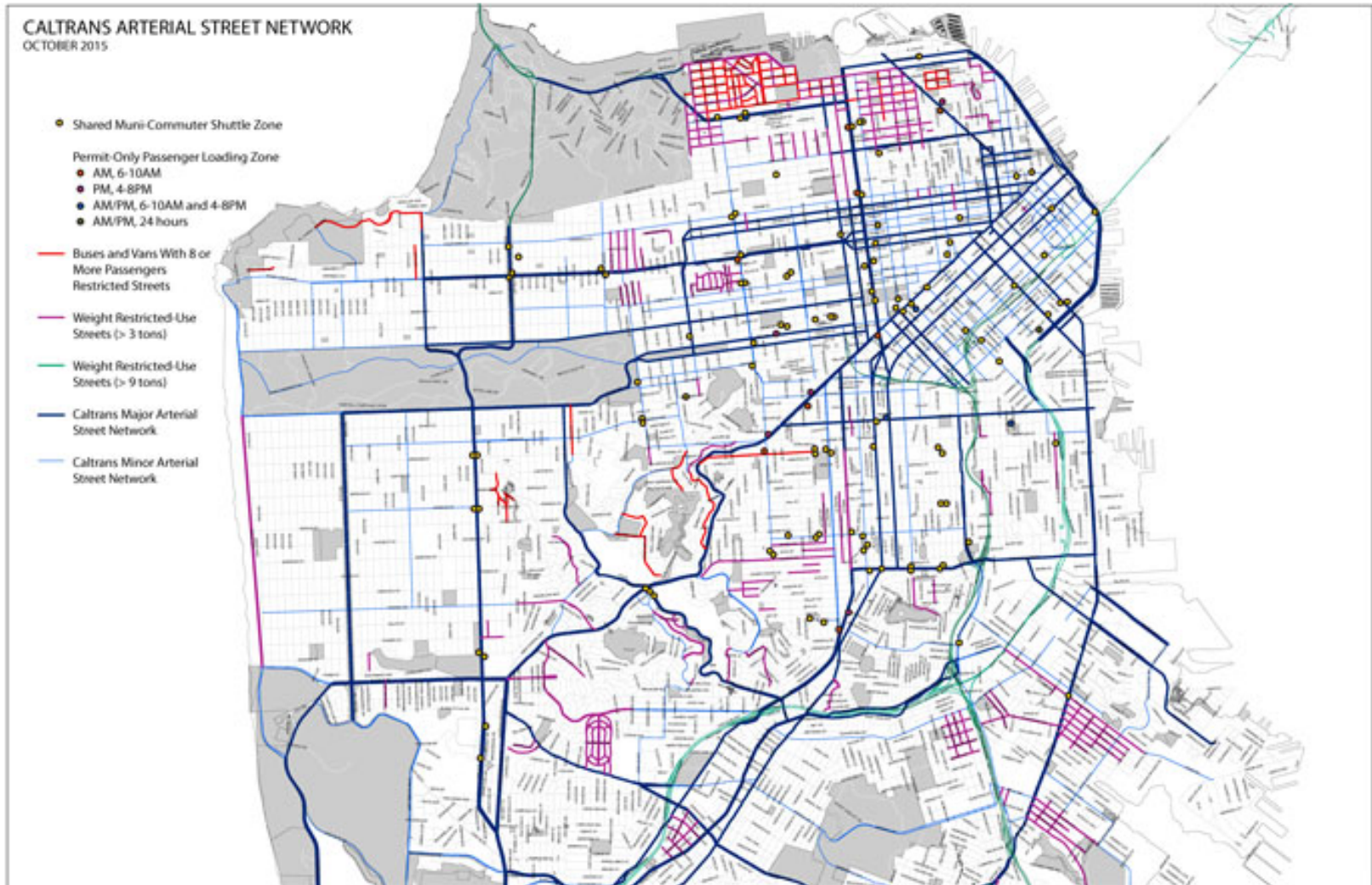
- October/November
  - Public outreach regarding Program updates
  - Release Evaluation and Program policy
- November 4
  - Public workshop
- November 17
  - SFMTA Board of Directors hearing
- February 1
  - Planned start of Commuter Shuttle Program

# Commuter Shuttle Program

- Evaluation results
- Consideration of alternatives
- Feedback from shuttle operators
- Board of Supervisors' Labor Harmony Resolution

# Large-bus street network

## Major and minor arterial network



# System upgrades

## Increased enforcement



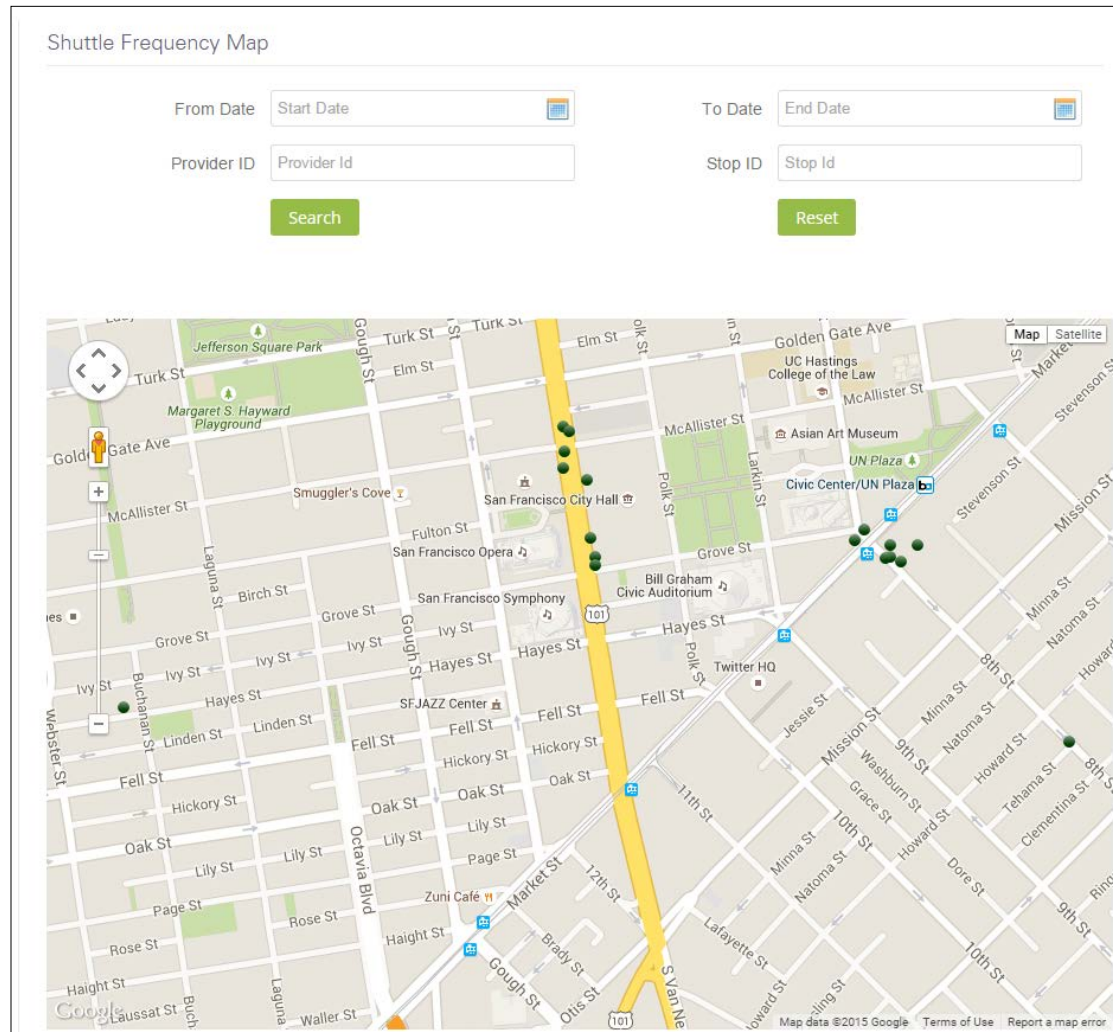
# System upgrades

## Capital improvements on shuttle routes



# System upgrades

## Expanded GPS data systems





# Vehicle fleet requirements

## Model year turnover



# No charge for free public shuttles

## Encouraging free rides



# Labor harmony

## Service disruption prevention plan

- March 9, 2015: San Francisco Board of Supervisors issued a resolution
- SFMTA to establish Labor Harmony conditions for applicants in pilot and potential permanent program
- Applicants to provide a certification indicating that labor and other practices will not interfere with service delivery

Thank you