



# Embarcadero Enhancement Project

July 18, 2014

SFMTA Policy and Governance Committee



- **Planning**
- **Design Concept**
- **Bikeway**

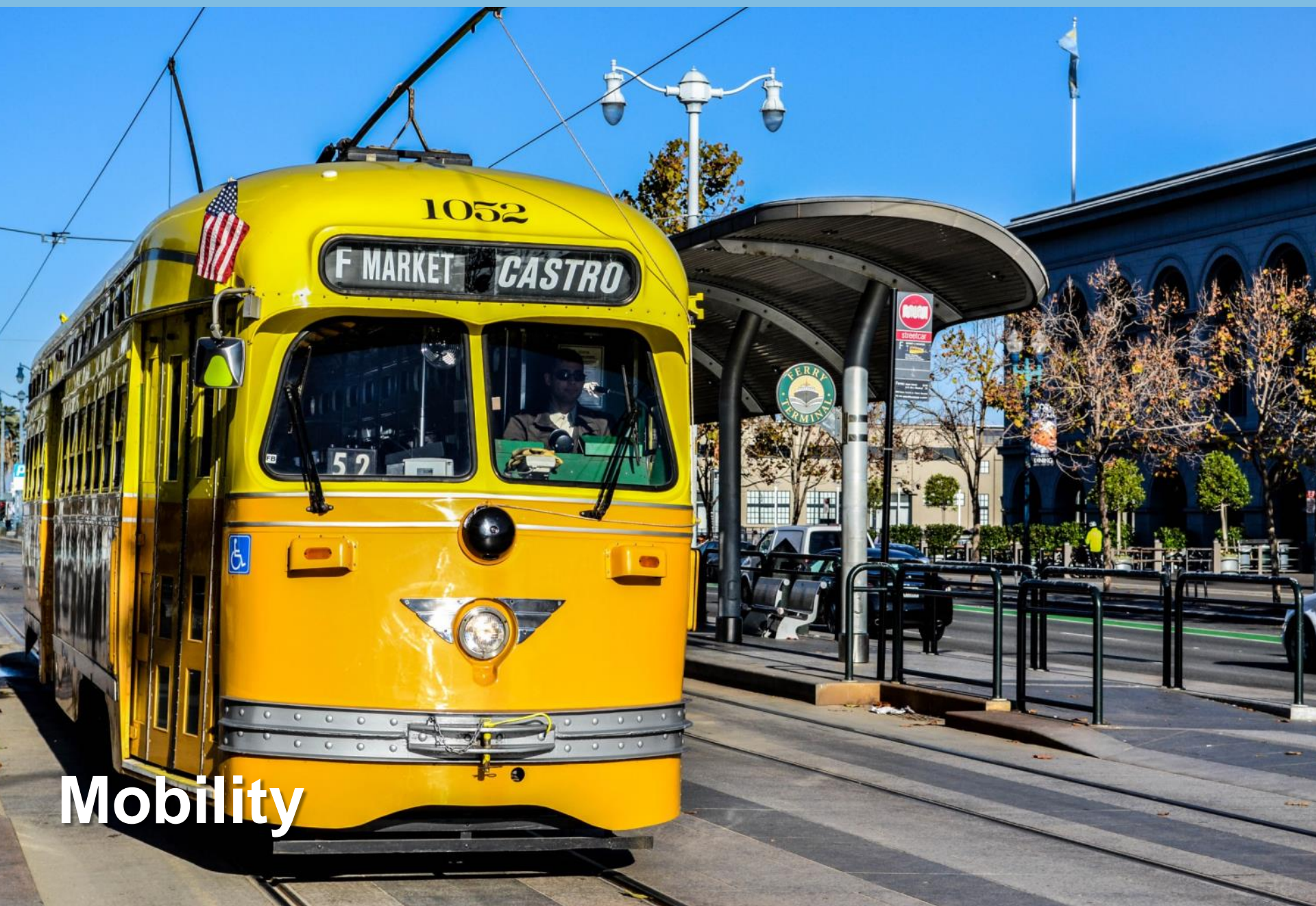




Iconic & popular



Meaningful



**Mobility**



# Function



Delivery



# Custom Needs





**Conflict**



Uncomfortable



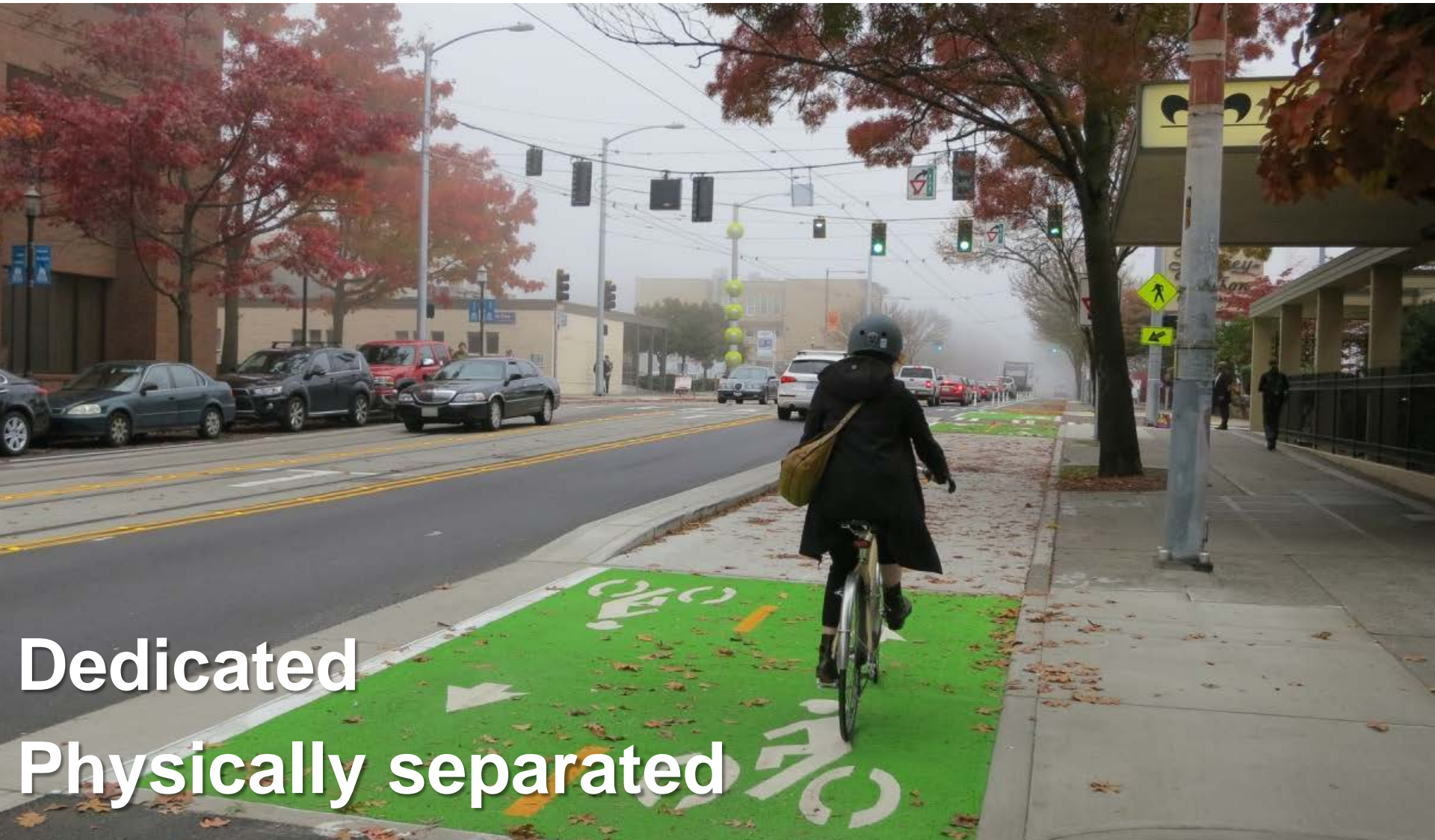
# Project Goals

**Safe and Comfortable  
Access  
Efficient  
Economic Development  
Urban Design  
Integration**





# What is a 'Bikeway'?



**Dedicated  
Physically separated**



# What is a 'Bikeway'?



Intersections

One way or two way



# Project Benefits

Safety  
Access  
Economic Vitality





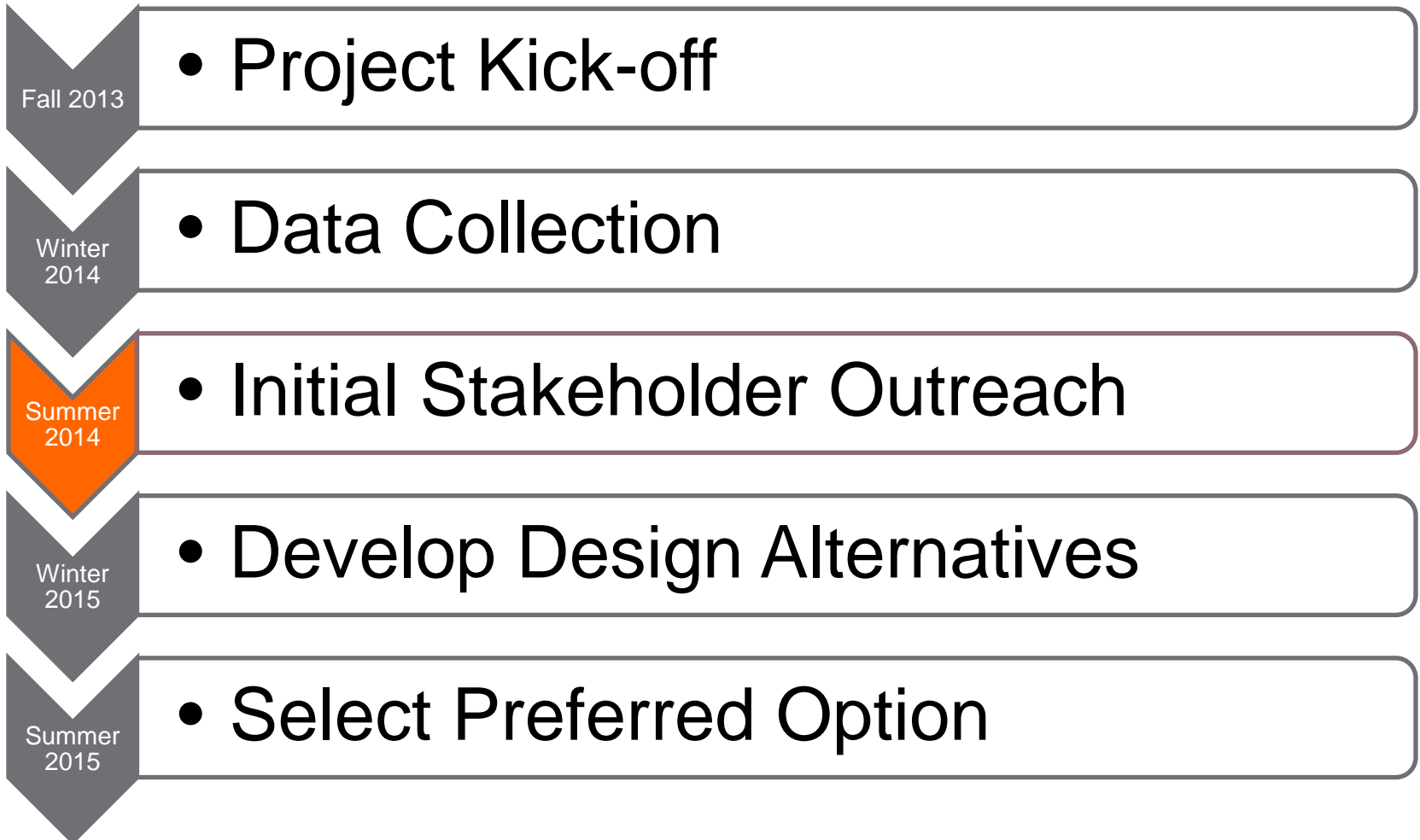
# Assumptions

Limited to the Embarcadero  
Protected  
Muni  
Mobility





# Schedule







# Focused Engagement

Open houses

Direct conversations

Project website

Design charrette

On-location office hours





# Public Outreach

- **First Open House:** Data and Idea Development; July 24, 6pm at Pier 1
- **Three Workshops:** geographic details and design options
- **Second Open House:** Identify Design Solutions
- **Three Workshops** (if needed)
- **Third Open House:** Design Recommendations

*Ongoing: Presentations to community groups, agencies, and one-on-one conversations with stakeholders*



# Contact Info

## SFMTA

**Patrick Golier, PM**

[patrick.golier@sfmta.com](mailto:patrick.golier@sfmta.com)

Darby Watson, Principal in Charge

Dan Provence, Deputy PM

Kristiann Choy, Lead Engineer

Gabe Ho, Team Engineer

## Partners

**Diane Oshima, Port of SF**

[diane.oshima@sfport.com](mailto:diane.oshima@sfport.com)

Neil Hrushowy, SF Planning

Nick Perry, SF Planning

John Thomas, DPW

Project website:

<http://www.sfmta.com/embarcadero>

