



SFMTA

January 5, 2024 Engineering Public Hearing

<https://sfmta.com/enghearing>

Conference Line: 1-415-523-2709

Conference ID: 396 848 05#

Please sign up to speak at [SFMTA.com/ENGSpeakerCard](https://sfmta.com/ENGSpeakerCard)

Proposed Street Changes

How does a proposed street change get approved?



<https://www.sfmta.com/committees/engineering-public-hearings>

Public Hearing Decision Posting

Results will be posted by 5 PM next Friday

<https://sfmta.com/engineering>

Select Meeting
from List of Past
Meetings



Past Meetings & Events for this Committee

- May 19** **Engineering Public Hearing Meeting, May 19, 2023**
The Streets Division of the San Francisco Municipal Transportation Agency will hold an online...
- May 5** **Engineering Public Hearing Meeting, May 5, 2023**
The Streets Division of the San Francisco Municipal Transportation Agency will hold an online...
- Apr 21** **Engineering Public Hearing Meeting, April 21, 2023**
The Streets Division of the San Francisco Municipal Transportation Agency will hold an online...

[View all past Meetings & Events >](#)



SFMTA

January 5, 2024 Engineering Public Hearing

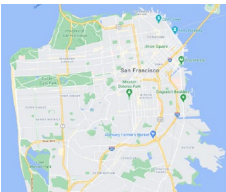
<https://sfmta.com/enghearing>

Conference Line: 1-415-523-2709

Conference ID: 396 848 05#

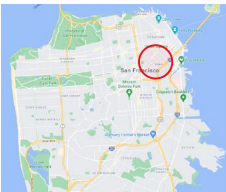
Please sign up to speak at [SFMTA.com/ENGSpeakerCard](https://sfmta.com/ENGSpeakerCard)

GENERAL PUBLIC COMMENT



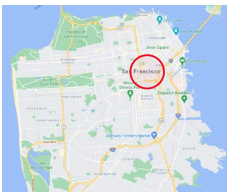
Conference Line: **1-415-523-2709** (conference ID: 396 848 05#)
To comment on an item, press *5 to raise hand and *6 to unmute when prompted.

1. ESTABLISH - RESIDENTIAL PERMIT PARKING AREA U (Eligibility only, no signs)
1221-1225 Folsom Street (Supervisor District 6) (Requires approval by the SFMTA Board) Gerry Porras,
gerry.porras@sfmta.com



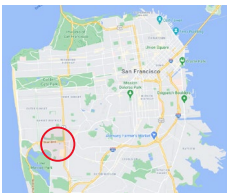
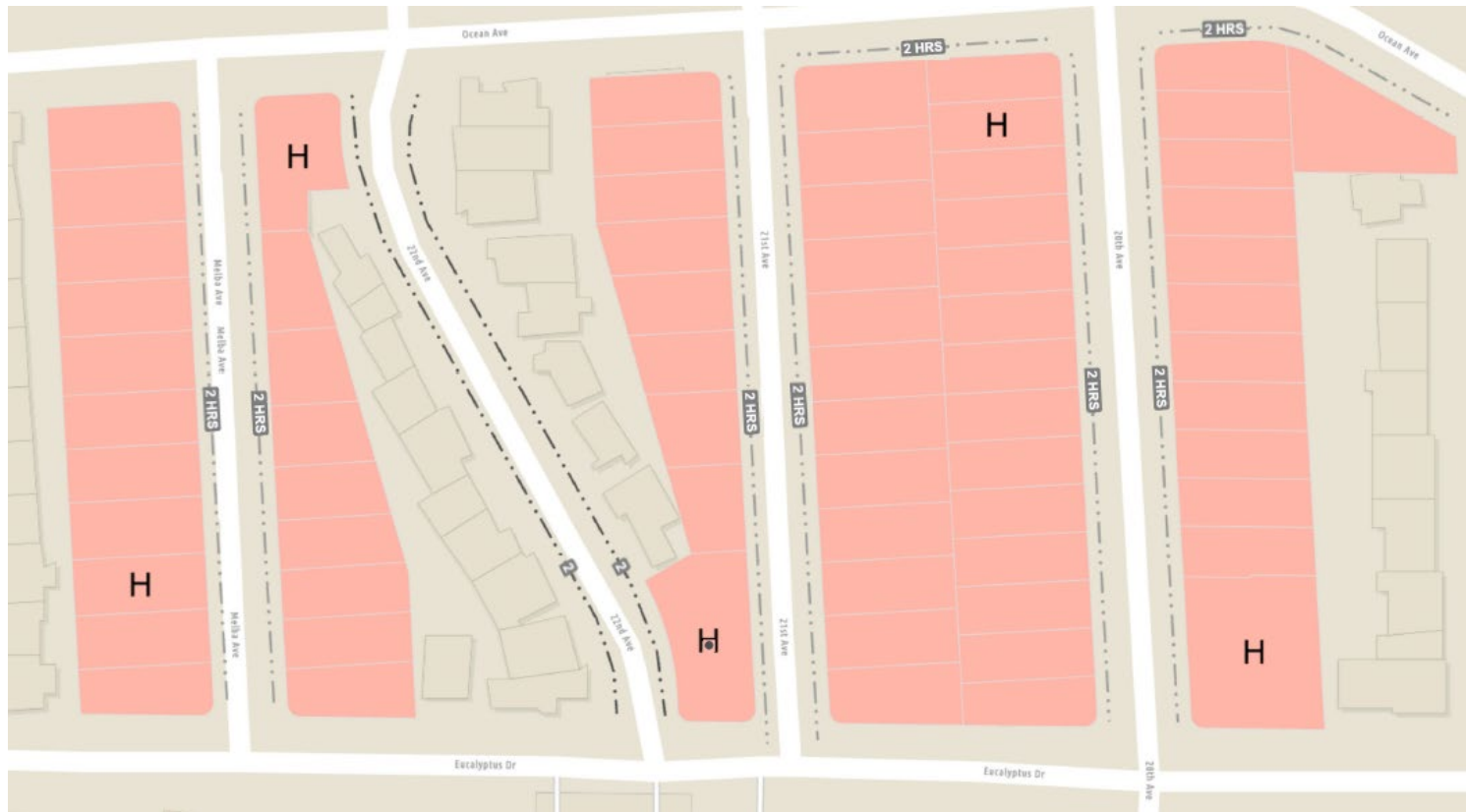
Conference Line: **1-415-523-2709** (conference ID: 396 848 05#)
To comment on an item, press *5 to raise hand and *6 to unmute when prompted.

2. ESTABLISH - RESIDENTIAL PERMIT PARKING AREA U (Eligibility only, no signs)
1550-1560 Mission Street and 49-55 South Van Ness Avenue (Supervisor District 6) (Requires approval by the SFMTA Board) Gerry Porras, gerry.porras@sfmta.com



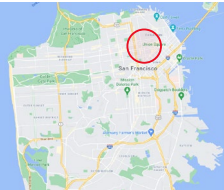
Conference Line: **1-415-523-2709** (conference ID: 396 848 05#)
To comment on an item, press *5 to raise hand and *6 to unmute when prompted.

**3. RESCIND – 2-HOUR PARKING, MONDAY THROUGH SATURDAY, 7 AM TO 6 PM
ESTABLISH – 2-HOUR PARKING, MONDAY THROUGH FRIDAY, 8 AM TO 6 PM, EXCEPT FOR VEHICLES WITH
AREA H PERMITS
22nd Avenue, east side and west side, between Ocean Avenue and Eucalyptus Drive (Supervisor District 4)
(Requires approval by the SFMTA Board) Gerry Porras, gerry.porras@sfmta.com**



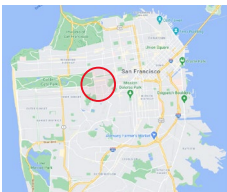
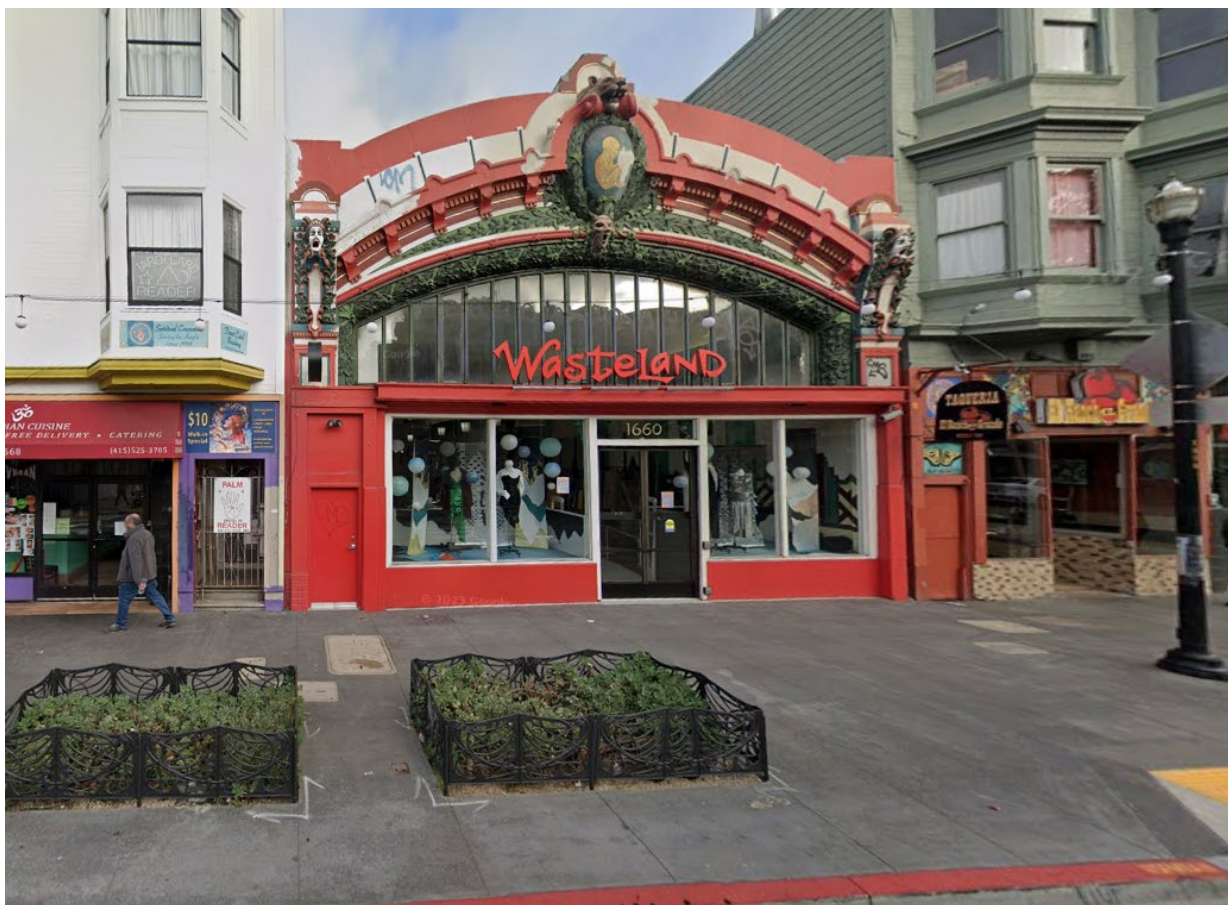
Conference Line: **1-415-523-2709** (conference ID: 396 848 05#)
To comment on an item, press *5 to raise hand and *6 to unmute when prompted.

4. ESTABLISH - RESIDENTIAL PERMIT PARKING AREA C (Eligibility only, no signs)
525 Leavenworth Street (Supervisor District 5) (Requires approval by the SFMTA Board) Gerry Porras,
gerry.porras@sfmta.com



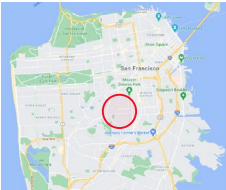
Conference Line: **1-415-523-2709** (conference ID: 396 848 05#)
To comment on an item, press *5 to raise hand and *6 to unmute when prompted.

5. ESTABLISH - RESIDENTIAL PERMIT PARKING AREA J (Eligibility only, no signs)
1660 Haight Street (Supervisor District 5) (Requires approval by the SFMTA Board) Gerry Porras,
gerry.porras@sfmta.com



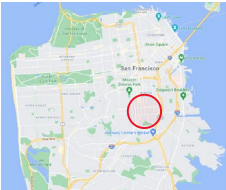
Conference Line: **1-415-523-2709** (conference ID: 396 848 05#)
To comment on an item, press *5 to raise hand and *6 to unmute when prompted.

6. ESTABLISH - RESIDENTIAL PERMIT PARKING AREA S (Eligibility only, no signs)
4024-4026 24th Street (Supervisor District 8) (Requires approval by the SFMTA Board) Gerry Porras,
gerry.porras@sfmta.com



Conference Line: **1-415-523-2709** (conference ID: 396 848 05#)
To comment on an item, press *5 to raise hand and *6 to unmute when prompted.

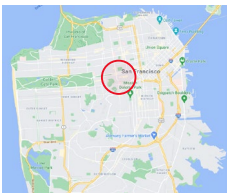
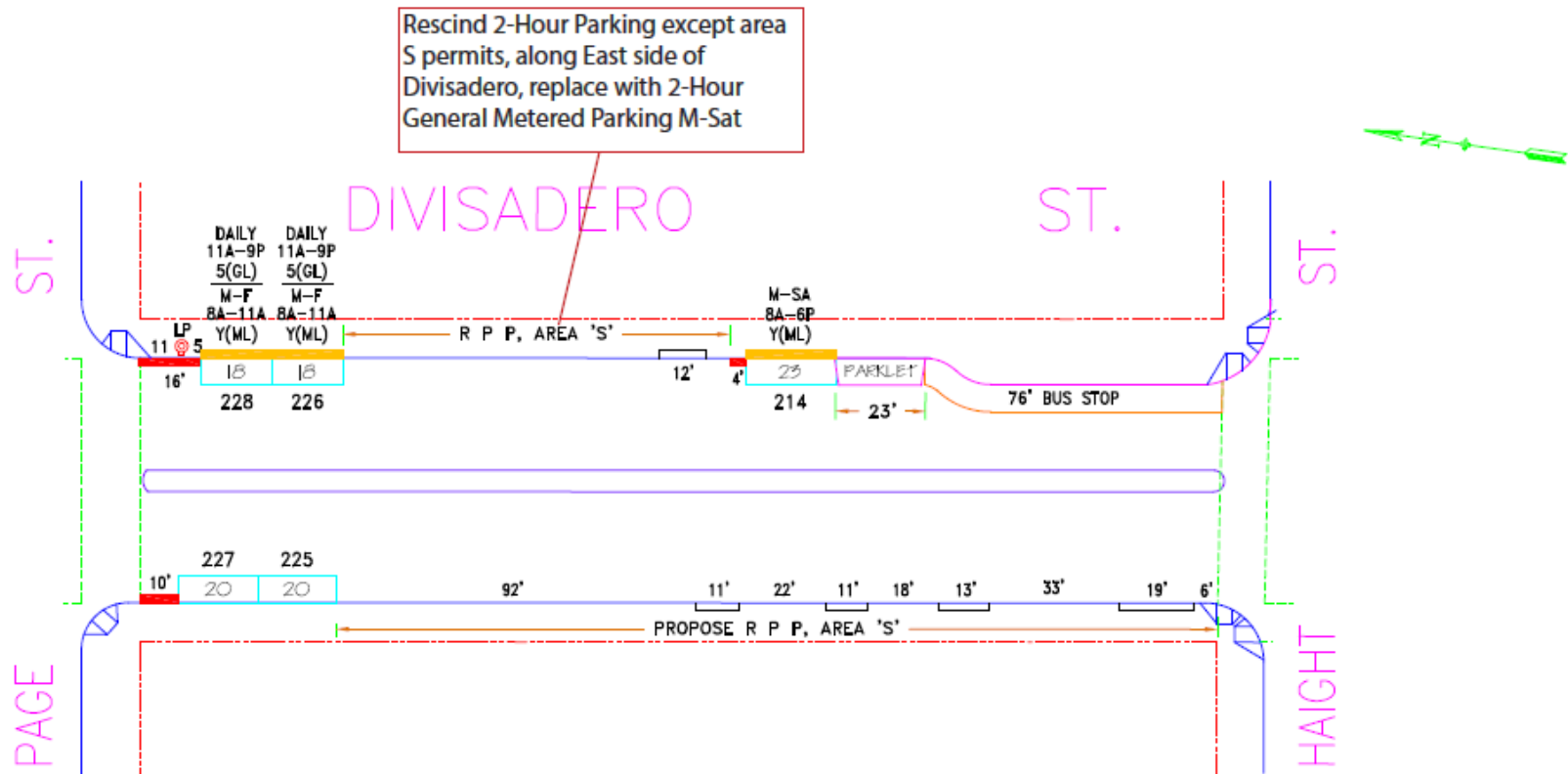
7. ESTABLISH - RESIDENTIAL PERMIT PARKING AREA I (Eligibility only, no signs)
1215-1217 South Van Ness Avenue (Supervisor District 9) (Requires approval by the SFMTA Board) Lulu Brien, Lulu.brien@sfmta.com



Conference Line: **1-415-523-2709** (conference ID: 396 848 05#)
To comment on an item, press *5 to raise hand and *6 to unmute when prompted.

8(a). RESCIND – 2-HOUR PARKING, 8 AM TO 9 PM, MONDAY THROUGH SATURDAY EXCEPT AREA “S” PERMITS
 Divisadero Street, east side, from 52 feet to 132 feet south of Page Street

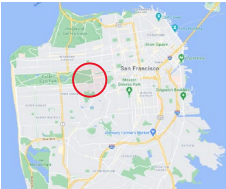
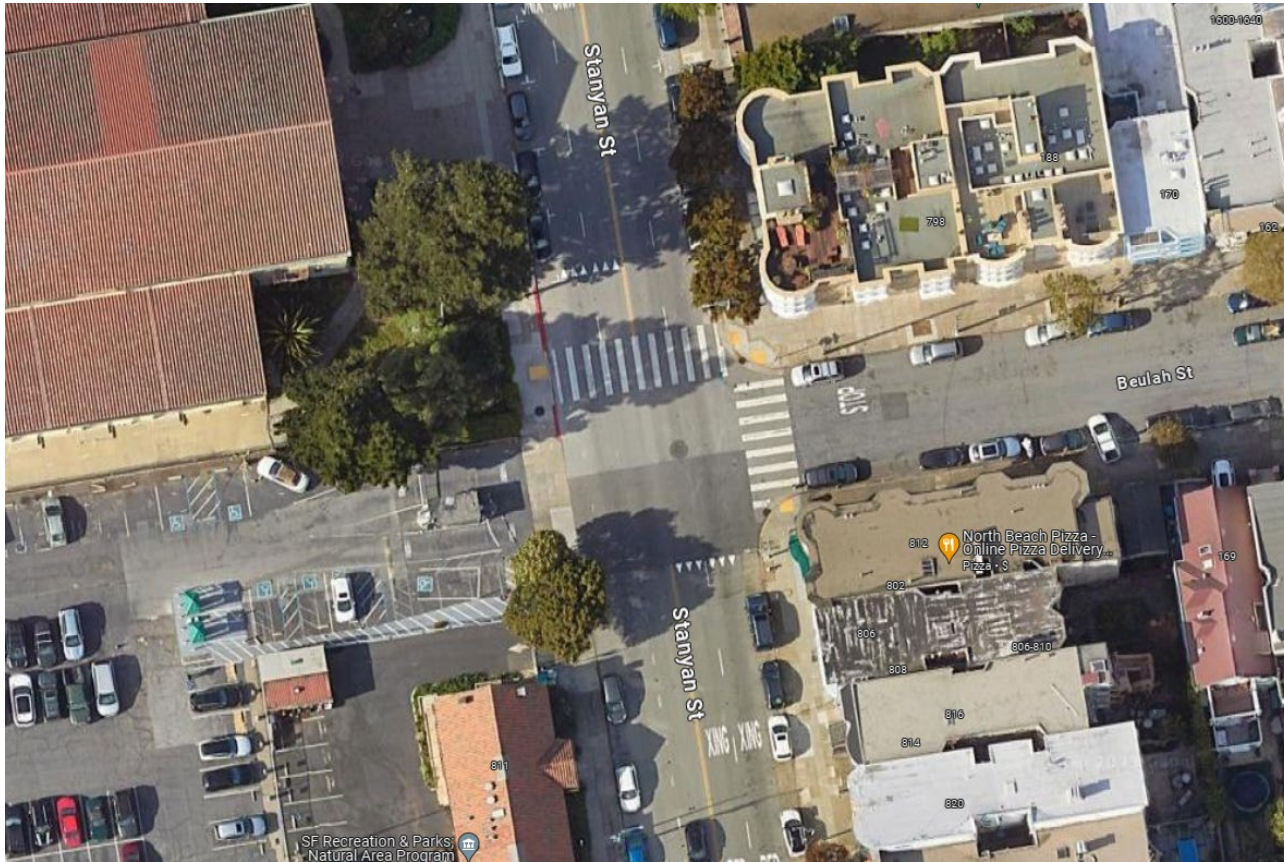
8(b). ESTABLISH – GENERAL METERED PARKING, 2-HOUR TIME LIMIT, 9 AM TO 6 PM, MONDAY THROUGH SATURDAY
 Divisadero Street, east side, from 52 feet to 132 feet south of Page Street
 (Supervisor District 5) (Requires approval by the SFMTA Board) Lulu Brien, lulu.brien@sfmta.com



Conference Line: **1-415-523-2709** (conference ID: 396 848 05#)
 To comment on an item, press *5 to raise hand and *6 to unmute when prompted.

9. ESTABLISH – RED ZONE

Stanyan Street, east side, from Beulah Street to 20 feet southerly
Beulah Street, north side, from Stanyan Street to 20 feet easterly
(Supervisor Districts 5 & 8) (Approvable by the City Traffic Engineer) Amy Chun, amy.chun@sfmta.com



Conference Line: **1-415-523-2709** (conference ID: 396 848 05#)

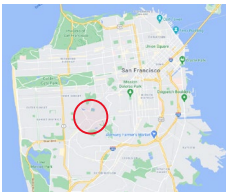
To comment on an item, press *5 to raise hand and *6 to unmute when prompted.

10. ESTABLISH – STOP SIGNS

Garcia Avenue, eastbound and southbound, at Idora Avenue

Idora Avenue, westbound, at Garcia Avenue

(Supervisor District 7) (Approvable by the City Traffic Engineer) Simon Qin, simon.qin@sfmta.com



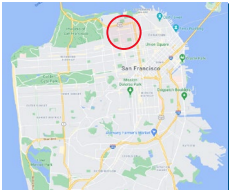
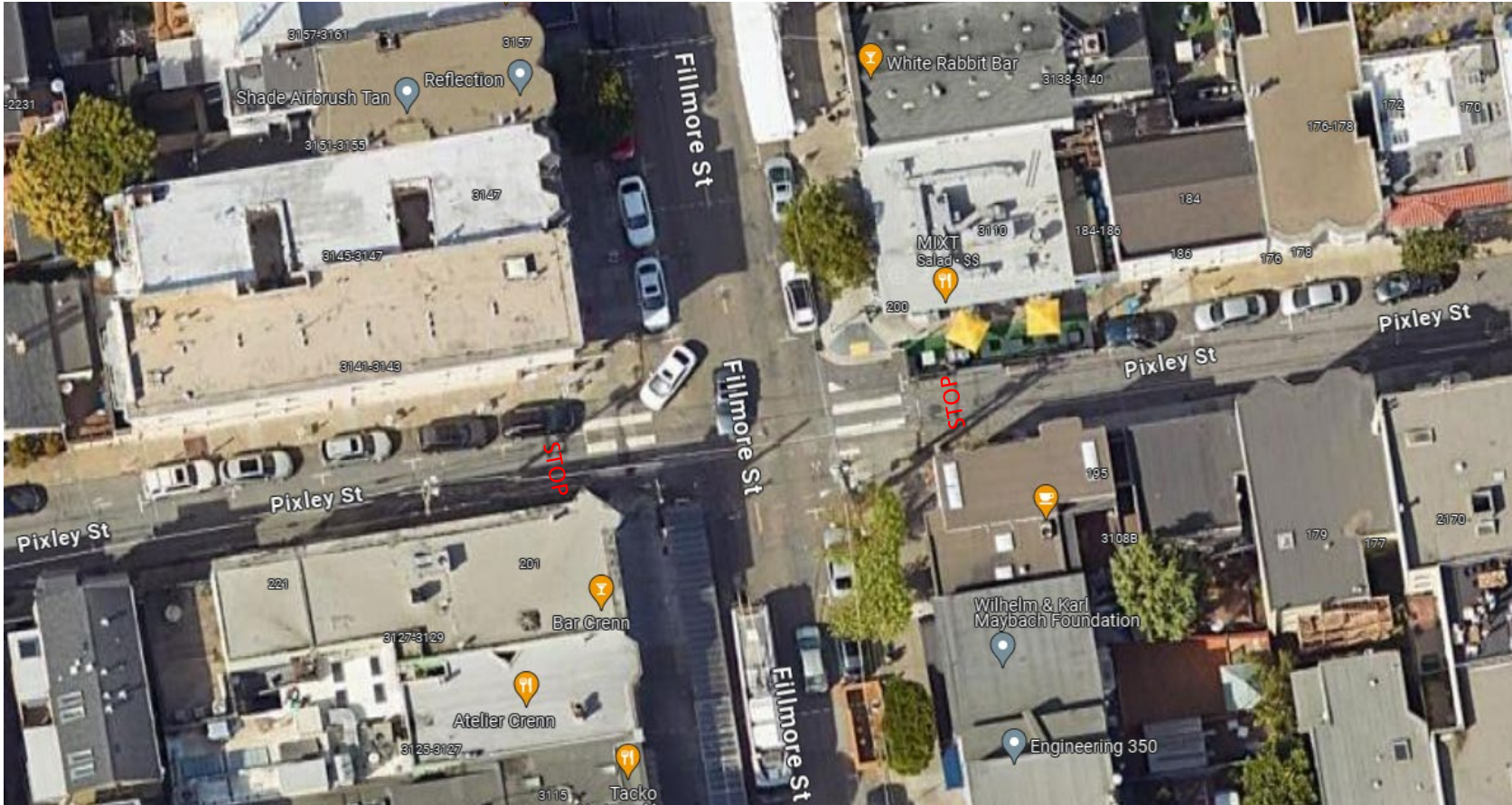
Conference Line: **1-415-523-2709** (conference ID: 396 848 05#)

To comment on an item, press *5 to raise hand and *6 to unmute when prompted.

11. ESTABLISH – STOP SIGNS

Pixley Street, eastbound and westbound, at Fillmore Street

(Supervisor District 2) (Approvable by the City Traffic Engineer) Justin Yuen, justin.yuen@sfmta.com

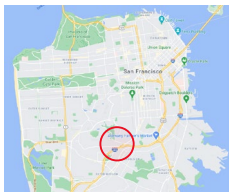


Conference Line: **1-415-523-2709** (conference ID: 396 848 05#)

To comment on an item, press *5 to raise hand and *6 to unmute when prompted.

12. ESTABLISH – STOP SIGNS

Baden Street, northbound and southbound, at Hearst Avenue, making this 4-way intersection an all-way STOP (Supervisor District 7) (Approvable by the City Traffic Engineer) Alejo Alvarado, alejo.alvarado@sfmta.com

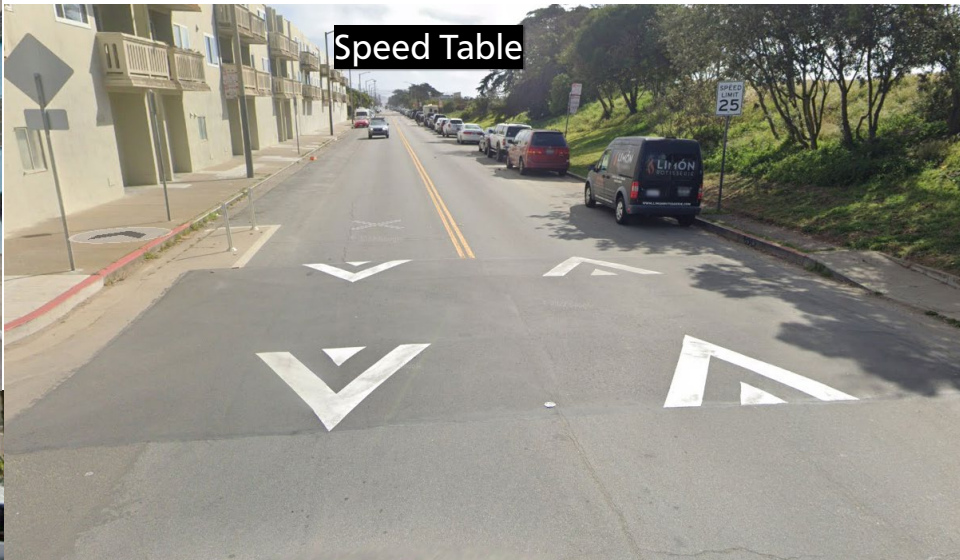


Conference Line: **1-415-523-2709** (conference ID: 396 848 05#)
To comment on an item, press *5 to raise hand and *6 to unmute when prompted.

Speed Hump



Speed Table



3-Lump Speed Cushion



Raised Crosswalk



5-Lump Speed Cushion



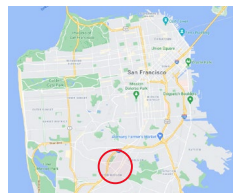
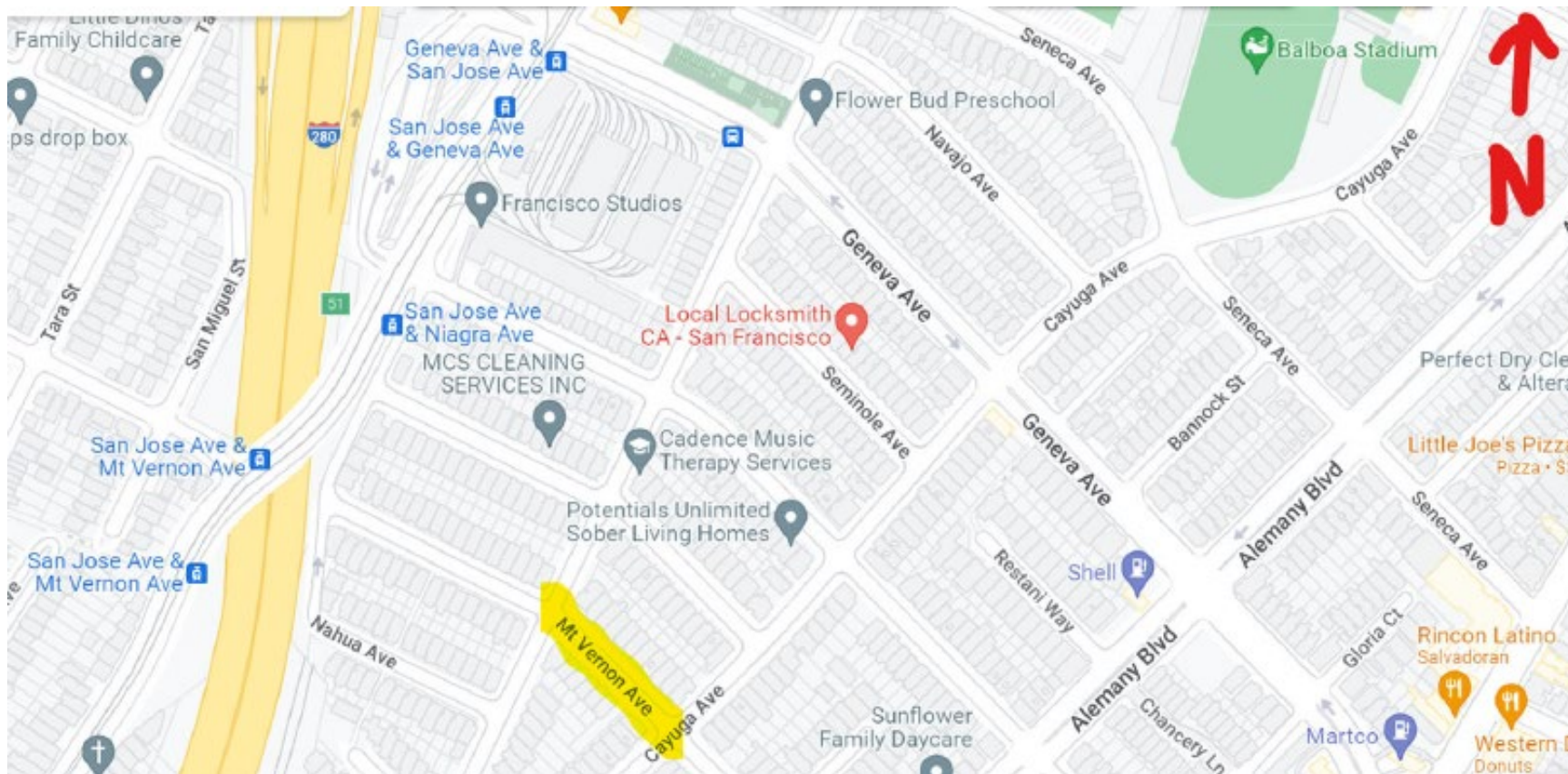


Residential Traffic Calming Program

<https://www.sfmta.com/getting-around/walk/residential-traffic-calming-program>

13. ESTABLISH - SPEED CUSHION

Mt Vernon Avenue, between Delano Avenue and Cayuga Avenue (1 3-lump speed cushion) (Supervisor District 11) (Approvable by the City Traffic Engineer) Vicente Romero, vicente.romero@sfmta.com

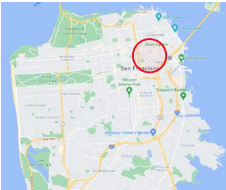


Conference Line: **1-415-523-2709** (conference ID: 396 848 05#)

To comment on an item, press *5 to raise hand and *6 to unmute when prompted.

14. RESCIND - TOW-AWAY, NO PARKING ANYTIME

Minna Street, south side, from 30 feet to 80 feet west of 6th Street (Supervisor District 6) (Requires approval by the SFMTA Board) Daniel Carr, daniel.carr@sfmta.com



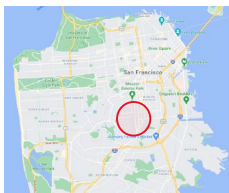
Conference Line: **1-415-523-2709** (conference ID: 396 848 05#)

To comment on an item, press *5 to raise hand and *6 to unmute when prompted.

15(a). REVOKE - PART-TIME ACCESSIBLE SCHOOL BUS LOADING ZONE, TOW AWAY, NO STOPPING, 8 AM-1PM, SATURDAY
Church Street, west side, from 131 feet to 165 feet north of 17th Street
Church Street, west side, from 316 feet to 435 feet north of 17th Street

15(b). ESTABLISH – PART-TIME ACCESSIBLE SCHOOL BUS LOADING ZONE, TOW AWAY, NO STOPPING, 8AM-10 AM AND 2 PM-4:30 PM, SCHOOL DAYS
Church Street, west side, from 131 feet to 165 feet north of 17th Street

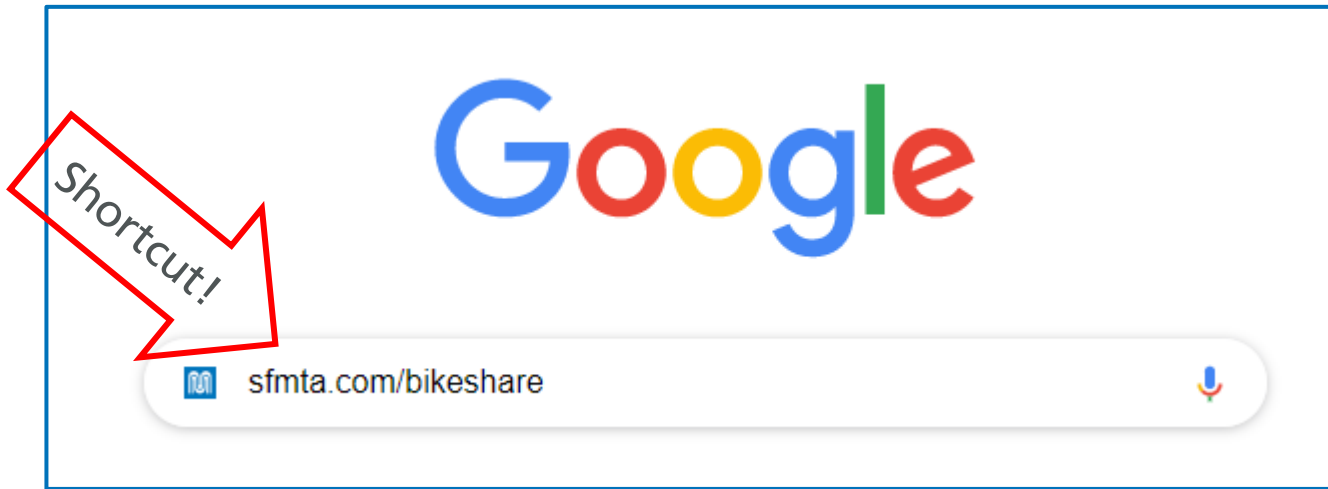
(Supervisor District 8) (Approvable by the City Traffic Engineer) Andre Wright, andre.wright@sfmta.com



Conference Line: **1-415-523-2709** (conference ID: 396 848 05#)
To comment on an item, press *5 to raise hand and *6 to unmute when prompted.



<https://www.sfmta.com/getting-around/bike/bike-share>



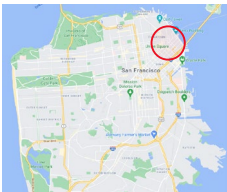
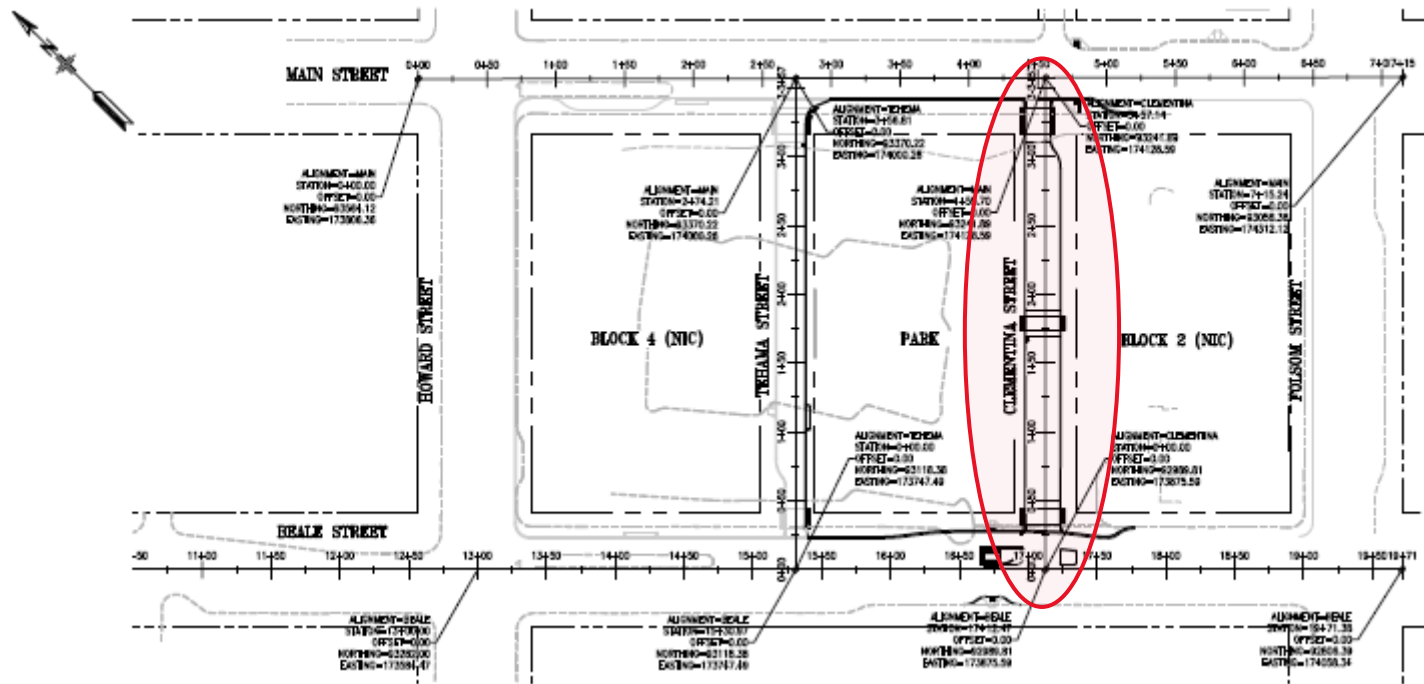
Quick Links

[Overview](#) | [Equity](#) | [Bikeshare's Purpose](#) | [System Planning and Station Siting](#) | [Bay Area Bike Share Pilot](#) | [Stationless Bikeshare](#) | [Bikeshare Data](#)

17(a). ESTABLISH - ALLEY
Clementina Street between Main Street and Beale Street

- 17(b). ESTABLISH - RAISED CROSSWALKS
A. Clementina Street at Beale Street (east crosswalk)
B. Clementina Street, midblock
C. Clementina Street at Main Street (west crosswalk)

(Supervisor District 6) (Approvable by the City Traffic Engineer) Mike Sallaberry mike.sallaberry@sfmta.com



Conference Line: **1-415-523-2709** (conference ID: 396 848 05#)

To comment on an item, press *5 to raise hand and *6 to unmute when prompted.

18(a). ESTABLISH – DO NOT ENTER, EXCEPT BIKES
Minnesota Street, northbound at 19th Street

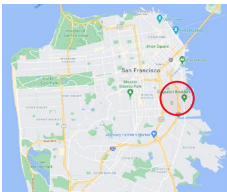
18(b). ESTABLISH – NO LEFT TURN, EXCEPT BIKES
19th Street, eastbound, at Minnesota Street

18(c). ESTABLISH – NO RIGHT TURN, EXCEPT BIKES
19th Street, westbound, at Minnesota Street

18(d). ESTABLISH – TRAFFIC ISLAND
Minnesota Street, midblock, between 20th Street and 22nd Street

18(e). ESTABLISH – RED ZONE
Minnesota Street, west side, from 414 feet to 449 feet south of 20th Street (extends existing fire zone by 25 feet, removes two parking spaces)
Minnesota Street, east side, from 19th Street to 25 feet northerly (extends existing fire zone by 6 feet, removes one parking space)

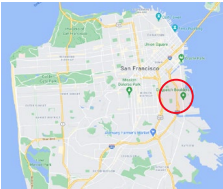
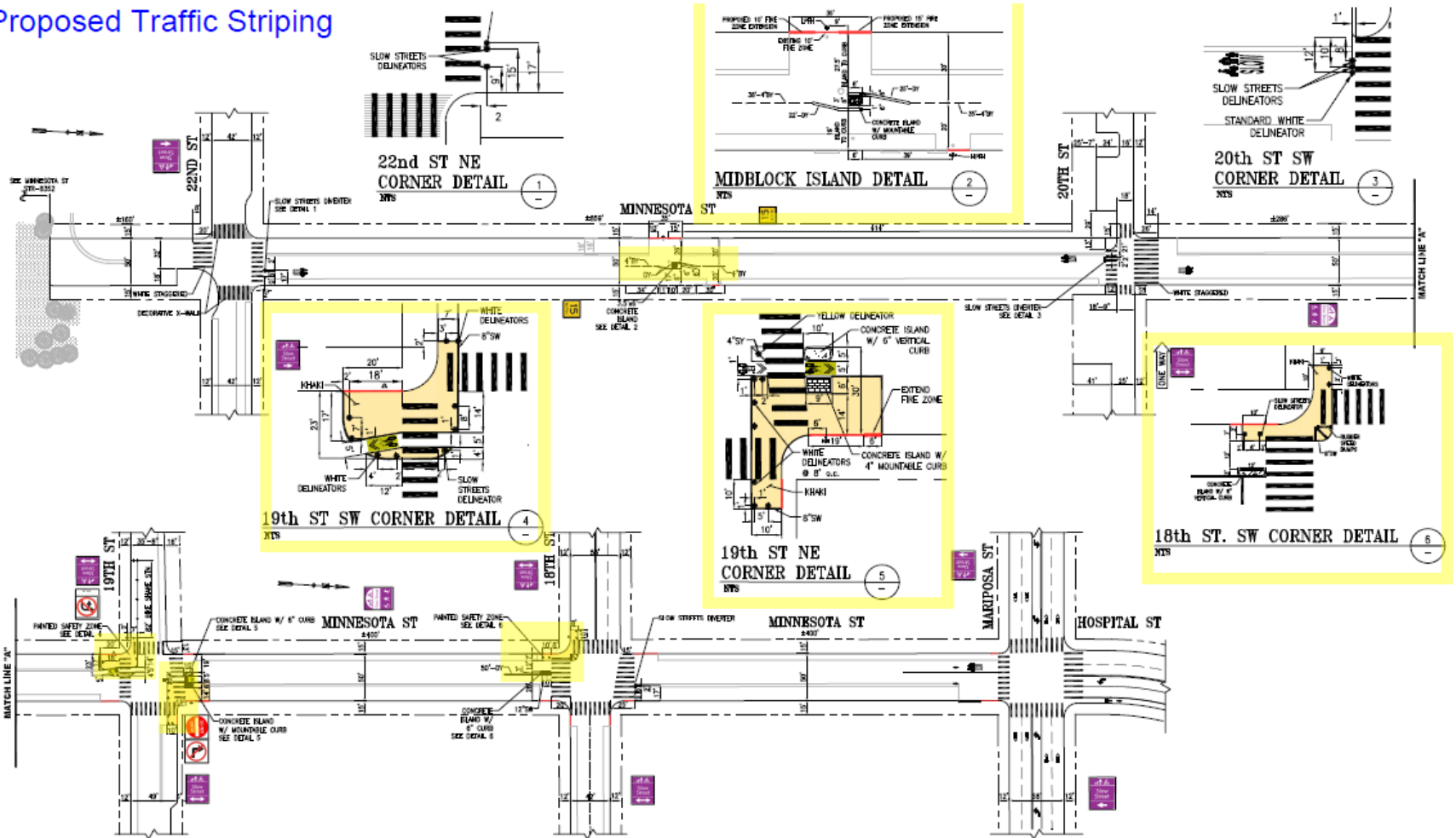
(Supervisor District 10) (Approvable by the City Traffic Engineer) Ellen Robinson,
ellen.robinson@sfmta.com



Conference Line: **1-415-523-2709** (conference ID: 396 848 05#)

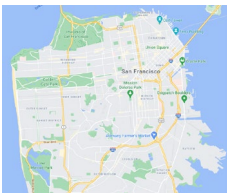
To comment on an item, press *5 to raise hand and *6 to unmute when prompted.

Proposed Traffic Striping



Conference Line: **1-415-523-2709** (conference ID: 396 848 05#)
 To comment on an item, press *5 to raise hand and *6 to unmute when prompted.

PUBLIC COMMENT



Conference Line: **1-415-523-2709** (conference ID: 396 848 05#)
To comment on an item, press *5 to raise hand and *6 to unmute when prompted.

Public Hearing Decision Posting

Results will be posted by 5 PM next Friday

<https://sfmta.com/engineering>

Select Meeting
from List of Past
Meetings



Past Meetings & Events for this Committee

- May 19** **Engineering Public Hearing Meeting, May 19, 2023**
The Streets Division of the San Francisco Municipal Transportation Agency will hold an online...
- May 5** **Engineering Public Hearing Meeting, May 5, 2023**
The Streets Division of the San Francisco Municipal Transportation Agency will hold an online...
- Apr 21** **Engineering Public Hearing Meeting, April 21, 2023**
The Streets Division of the San Francisco Municipal Transportation Agency will hold an online...

[View all past Meetings & Events >](#)



SFMTA

Next Engineering Public Hearing January 19, 2024

<https://sfmta.com/enghearing>

Conference Line: 1-415-523-2709

Conference ID: 396 848 05#