



The Great Highway

JOINT HEARING | REC PARK COMMISSION + SFMTA BOARD | JUNE 10, 2021

Today's Discussion

RPD and SFMTA seek early input on exploring next steps for the Great Highway

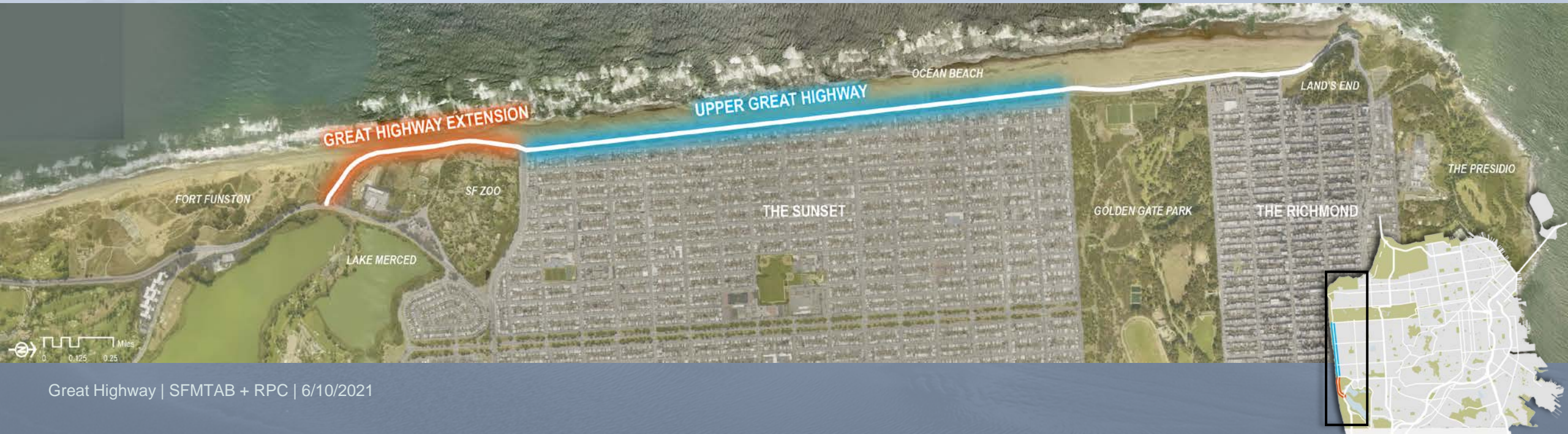
- 1. Current Conditions**
- 2. Open Space Opportunity**
- 3. Transportation and Traffic Impacts**
- 4. Future Opportunities**





The Great Highway Today

- **4-lane roadway** of through-only traffic along Ocean Beach from Skyline Blvd to Land's End
- Must contend with **climate change** and **sea-level rise impacts** in the short- and long-term





- Extension **closes to cars** in 2023 due to erosion
- Roadway closes for sand removal **27 days a year** on average



Stretch of southbound lanes closed due to erosion. Mar 2012. Paul Chinn/The Chronicle



- Roadway closed to vehicles as **emergency action** in April 2020 from Lincoln Way to Sloat Blvd
- Created **17 acres** (2 miles) of safe and accessible **open space** for active, all-ages recreation



Open Space Opportunity

Mission

- Recreation and beautiful parks
- Preserve the environment for everyone

Vision

- Inspiring a more livable city for all, connect us to play, nature, and each other
- Opportunity to create new parks

Strategies

- Keep today's parks safe, clean, & fun
- Build the great parks of tomorrow
- Develop more parks to address population growth





Understand the Great Highway beyond traffic management

- ❖ Prioritize people
- ❖ Equitable access
- ❖ Inclusive coastal experiences
- ❖ Variety of recreation
- ❖ Climate adaptation
- ❖ Neighborhood needs
- ❖ Placemaking

Transforming Public Space

OPEN SPACE OPPORTUNITY

Crissy Field



Patricia's Green



The Embarcadero



India Basin

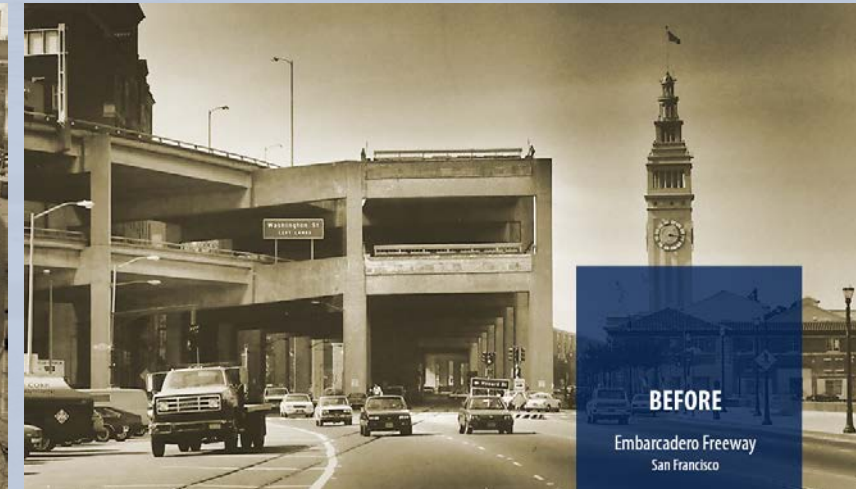


The Great Highway



Joining a Global Conversation

OPEN SPACE OPPORTUNITY



Joining a Global Conversation

OPEN SPACE OPPORTUNITY



Connecting Westside Open Spaces

OPEN SPACE OPPORTUNITY

- The key connection to creating **a continuous park network**
- Integrates seamlessly with bike and pedestrian networks to **expand safe access**
- Completes a car-free route **from the Ferry Building to the SF Zoo**

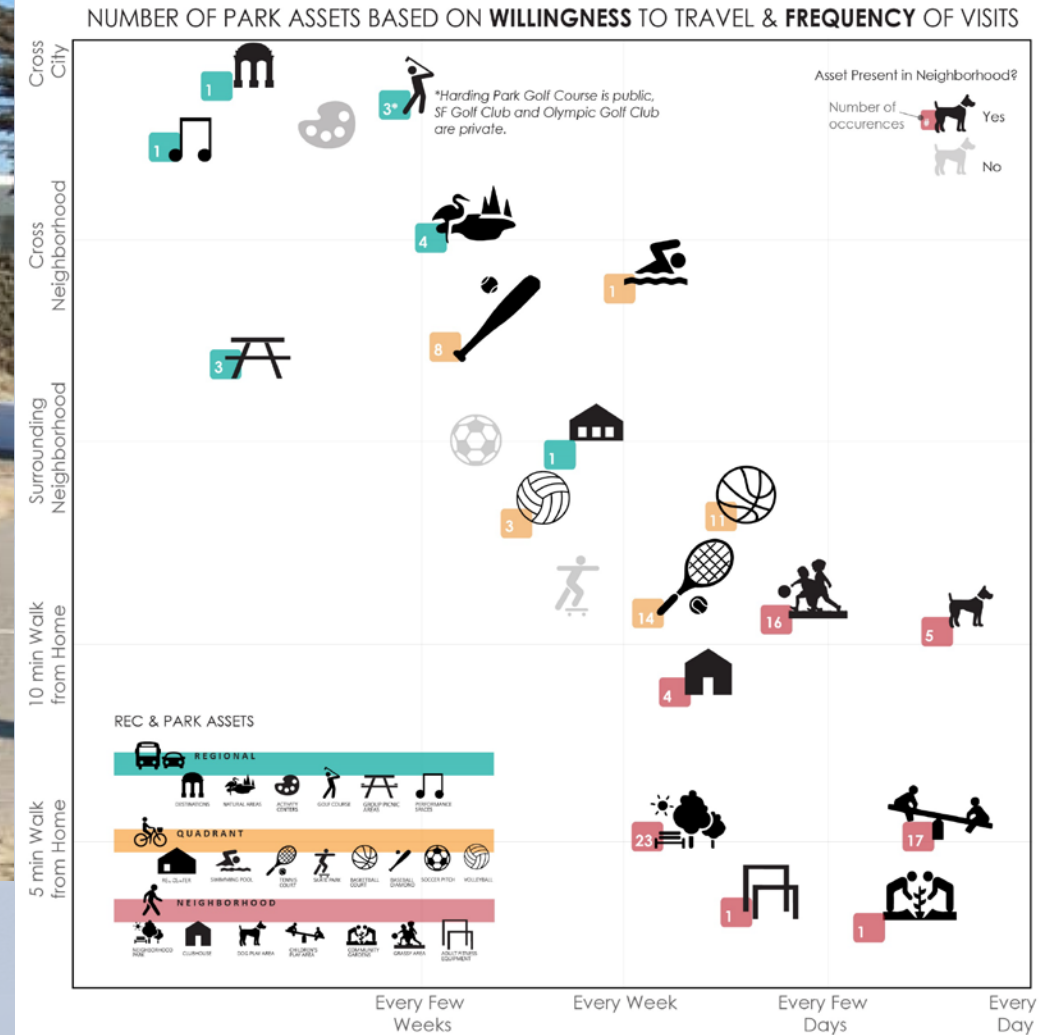


Filling a Recreation Need

OPEN SPACE OPPORTUNITY



Great Highway's paved, linear space would be a unique venue in the area for **all sorts of activities**



Note: Additional open space amenities are available at SF State, including walking paths, passive spaces and a swimming pool.

Popular People Space

OPEN SPACE OPPORTUNITY

- **126,000 monthly visitors** on average
- Protests, small gatherings, pop-up public art and music
- Community **stewardship**



Photo via Karl Mondon, Mercury News

Achieving our Citywide Goals

OPEN SPACE OPPORTUNITY



Pedestrian and Bike Connections



Safe Streets to Run, Roll and Stroll



Free, Family-Friendly Recreation



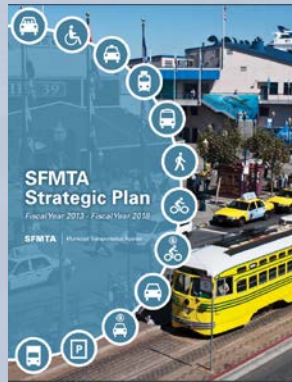
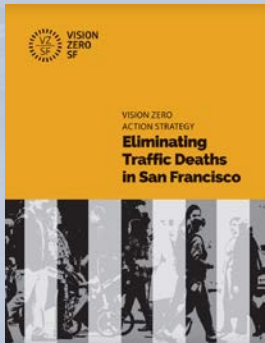
Access to Nature and the Coastline



Biodiversity, Climate and Stewardship



Improved Public Health





Transportation Network

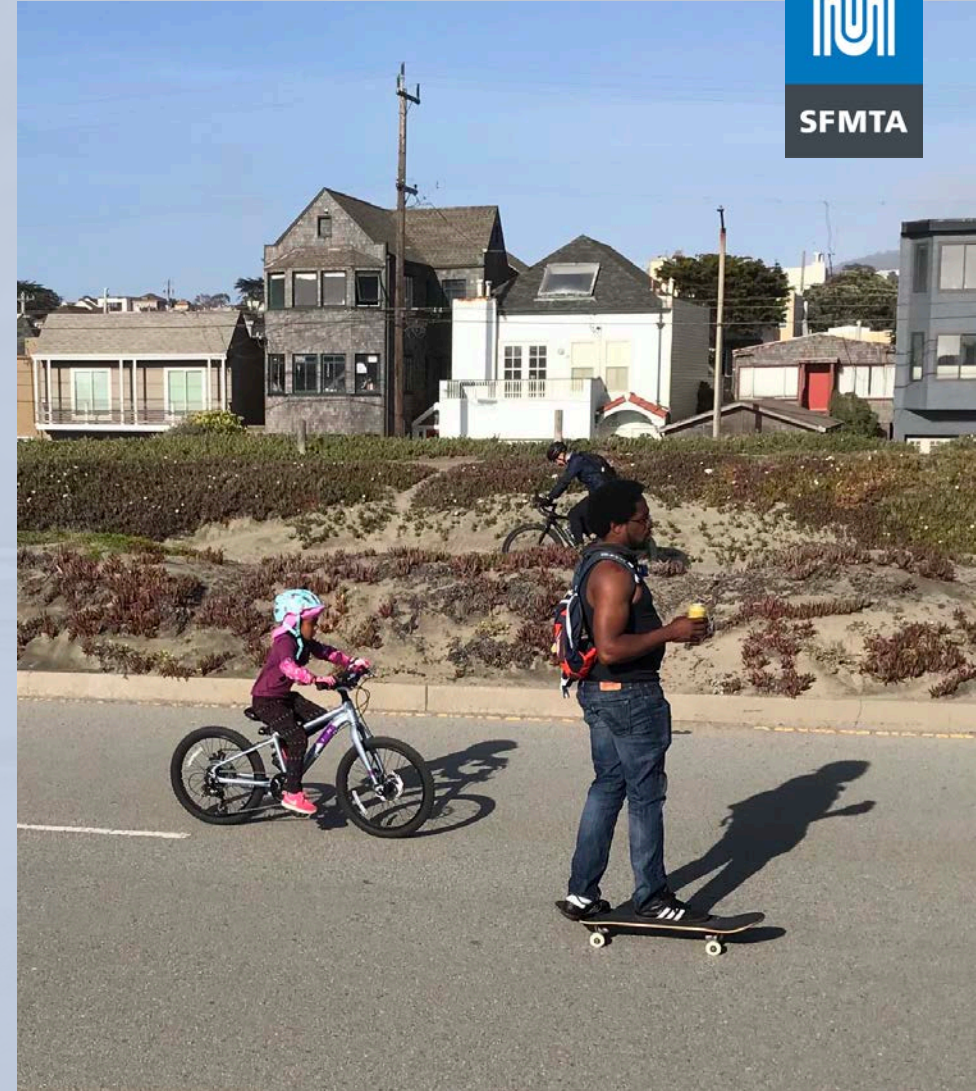


Strategic Plan Goals

Goal 1: Create a safer transportation experience for everyone.

Goal 2: Make transit and other sustainable modes of transportation the most attractive and preferred means of travel.

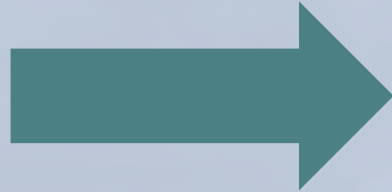
Goal 3: Improve the quality of life and environment in San Francisco and the region.



Responding to Concerns

Problem

- Cut Through Traffic On Lower Great Highway



Solution

- 12 Stop Signs



Problem

- Confused Drivers



Solution

- 6 Digital Message Signs



Problem

- Cut-Through Traffic On Lower Great Highway



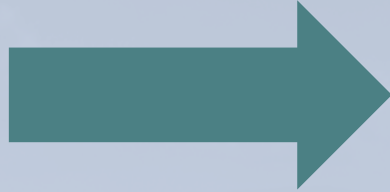
Solution

- 28 Speed Cushions + 1 Speed Table



Problem

- Speeding on Lower Great Highway



Solution

- Deployment of San Francisco Police Department Traffic Division



Problem

- Double Parking



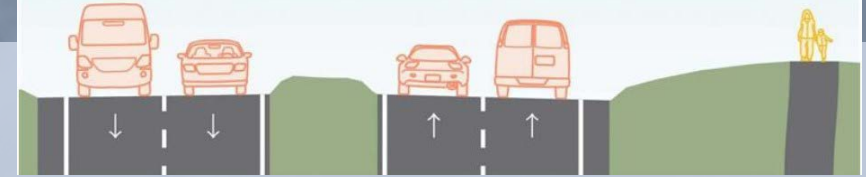
Solution

- Deployment of SFMTA Parking Control Officers

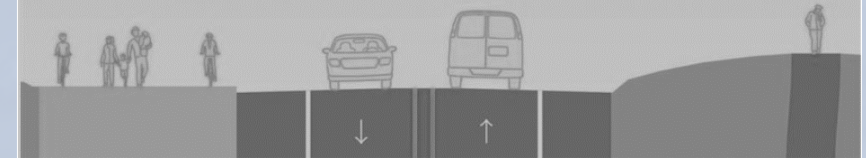


- Study of **long-term future** of Great Highway
 - **5 concepts** considered
- Operational & capital costs analysis
- 2 town hall meetings & public survey
- Over 50% **supported a full closure**
 - Nearly 4,000 responses
 - 95% from San Francisco residents

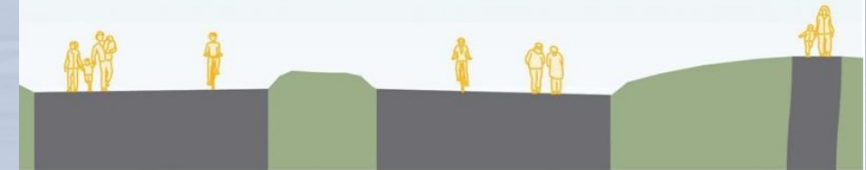
CONCEPT 1



CONCEPT 2



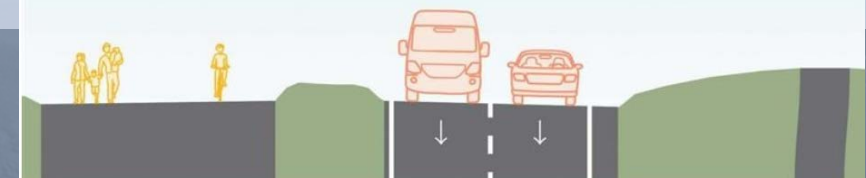
CONCEPT 3



CONCEPT 4 (WEEKENDS, HOLIDAYS, AND/OR CERTAIN SEASONS ONLY)



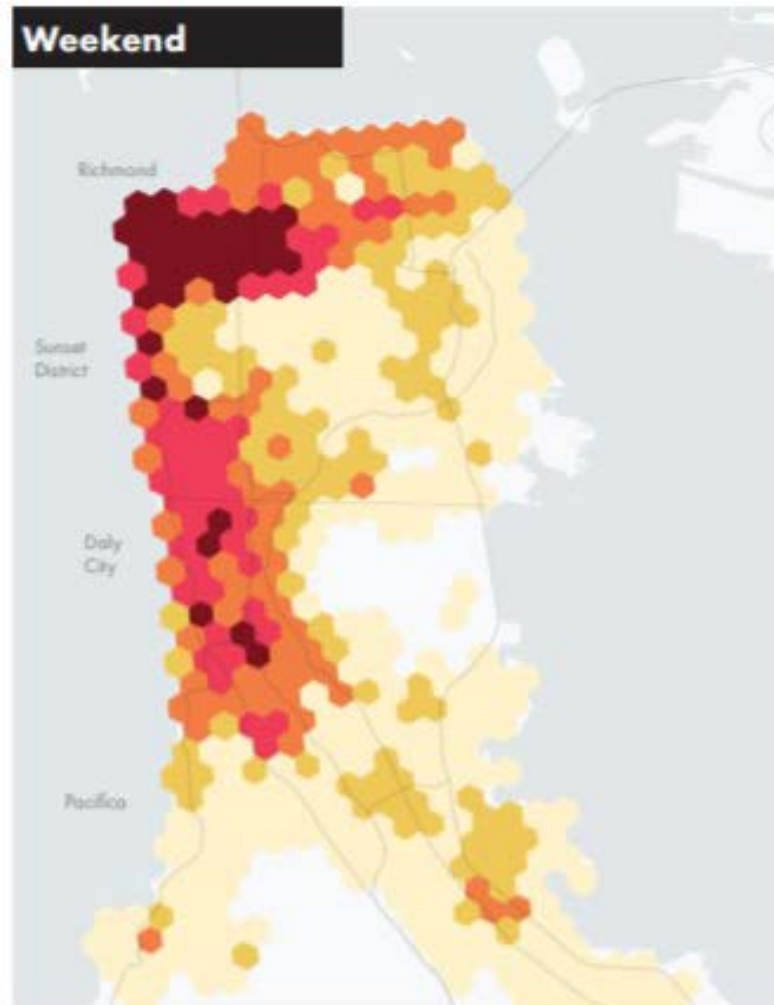
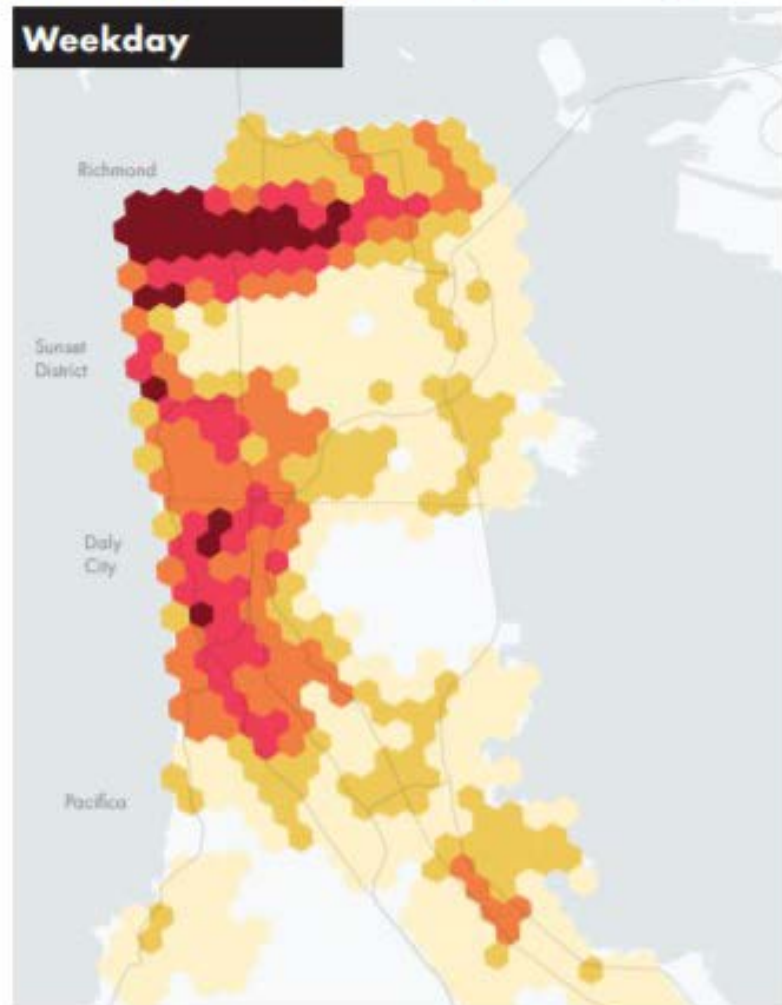
CONCEPT 5



Origins and Destinations of Trips

Origins & destinations of Great Highway car trips (pre-COVID)

Daily Car Trips



Pre-COVID, the Great Highway served:

- 17,000 car trips per weekday
- 19,000 car trips per weekend

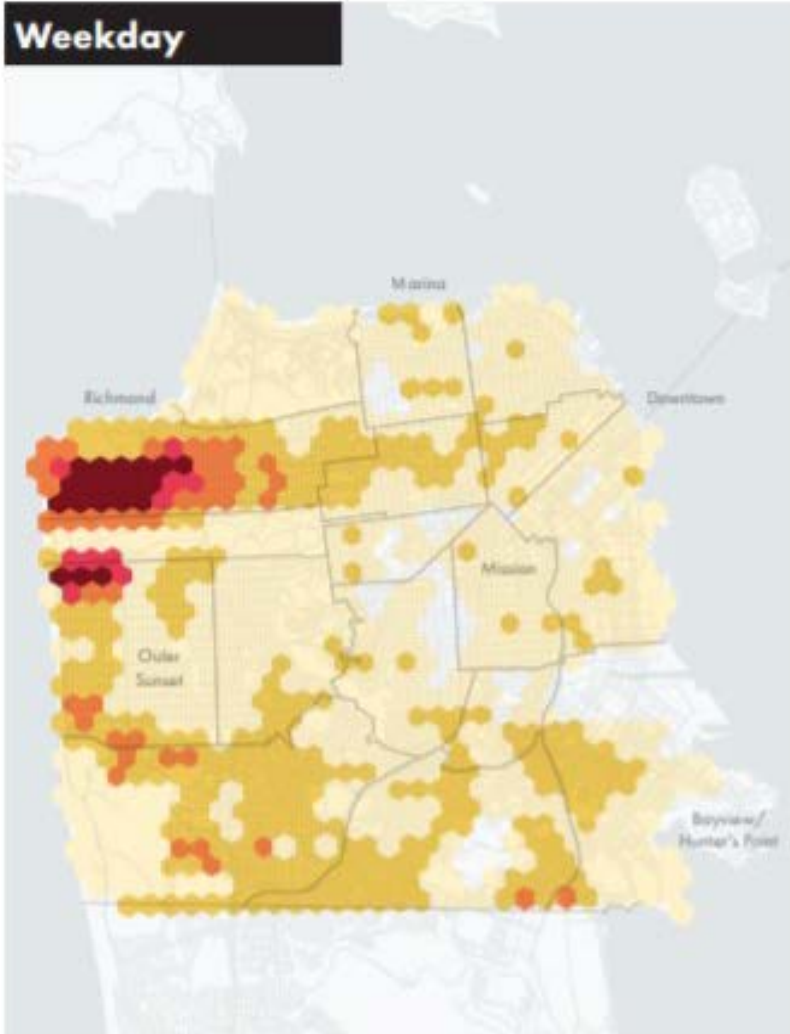
Where did Great Highway drivers live?

Home locations of San Francisco Great Highway drivers

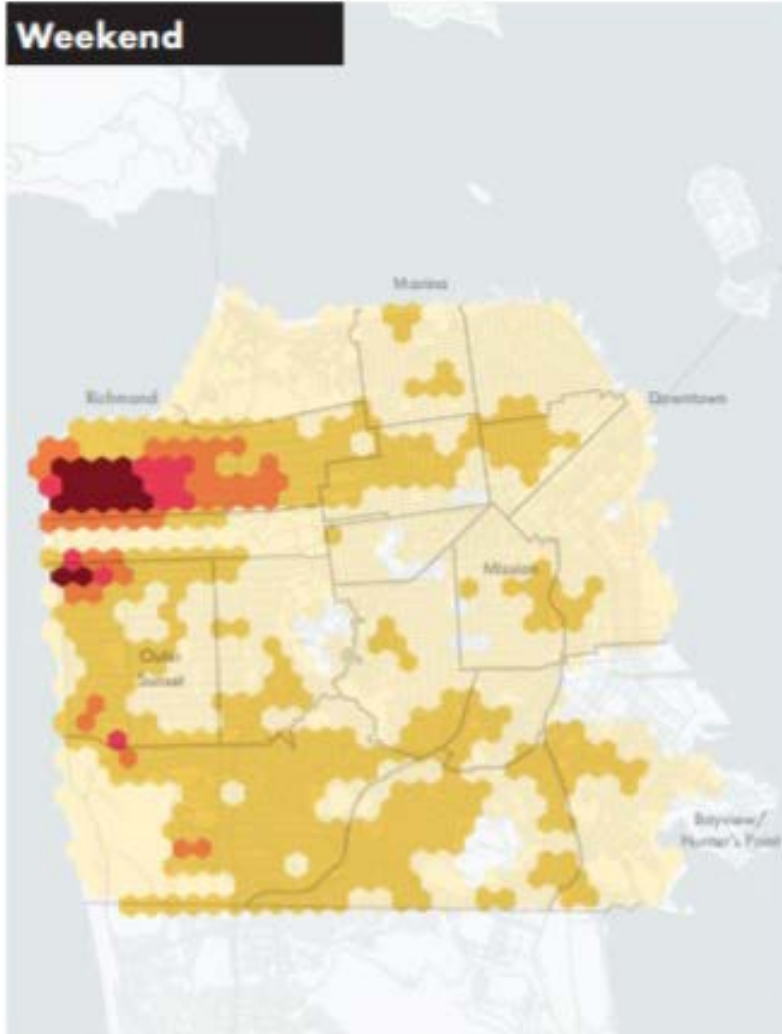
San Francisco Residents

1 to 5 5 to 20 20 to 50 50 to 75 75+

Weekday



Weekend



Pre-COVID, the Great Highway served:

- 7,800 residents per day
- 4 of 10 lived in the Richmond

Weekday Trip Diversions & Closure

Vehicle volumes on north-south routes between roads primarily connected by the Great Highway

Daily Vehicle Volumes

— 100 — 1,000 — 10,000

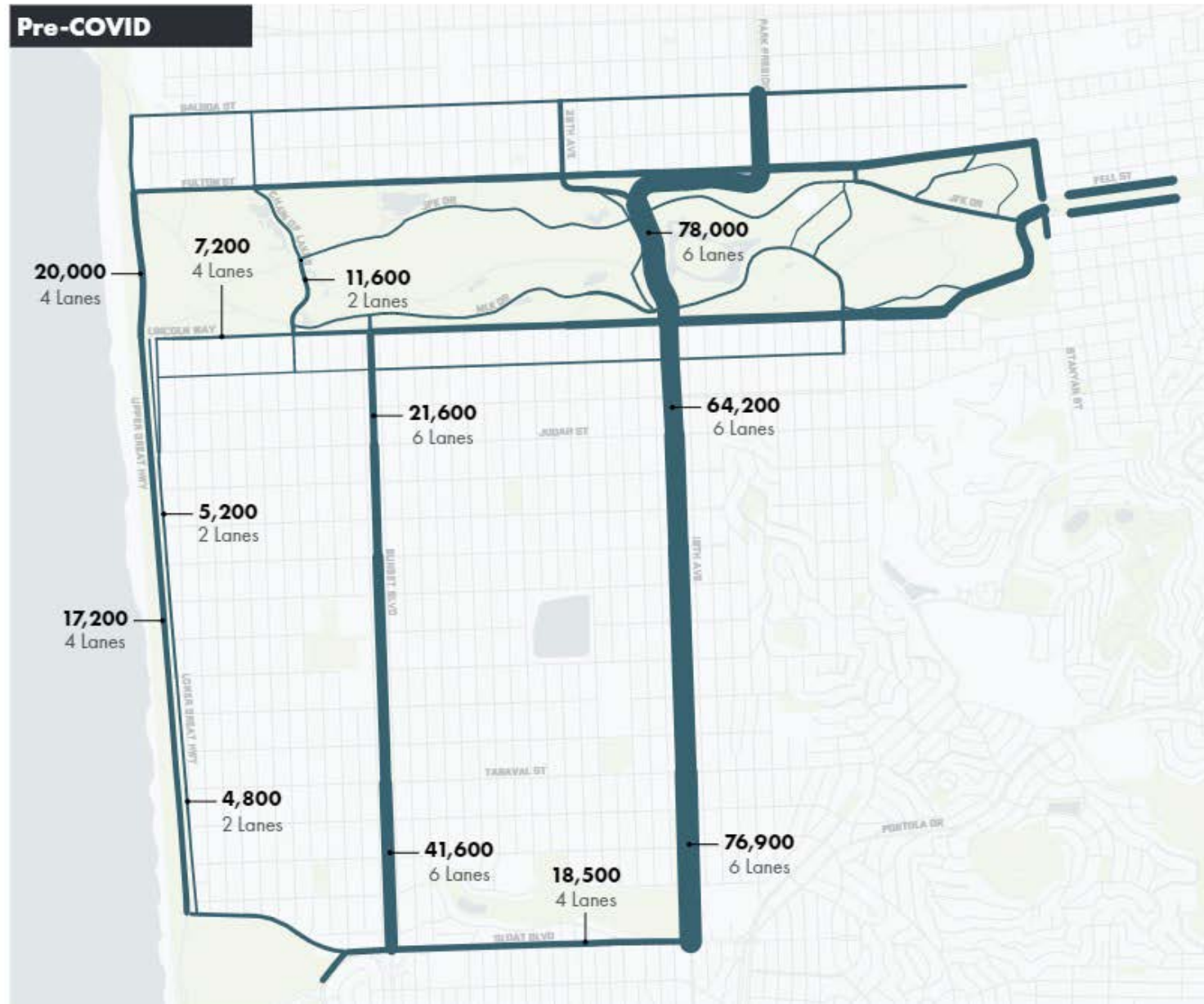
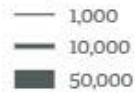
--- Car-Free Roads

■ Increased ■ Decreased



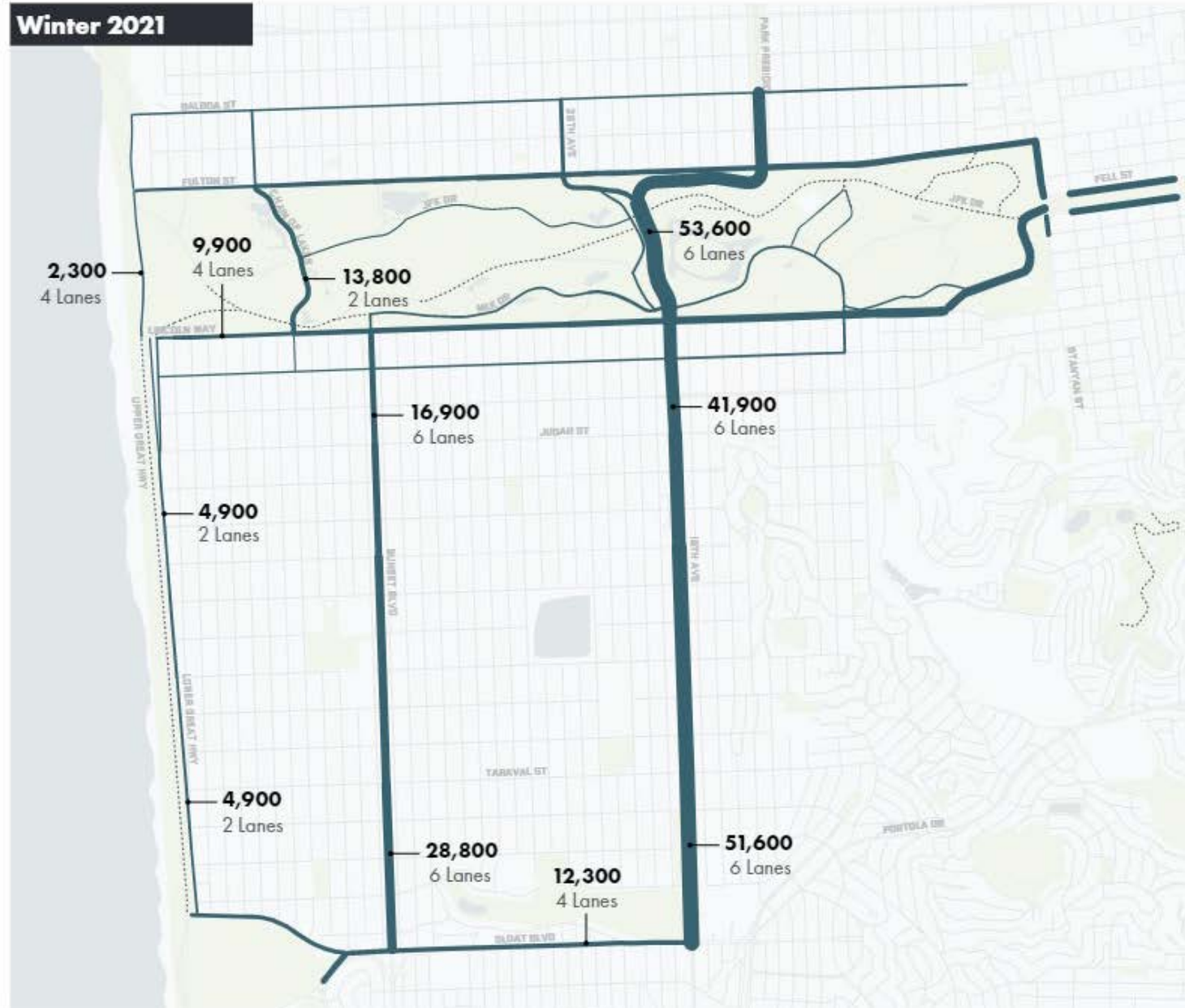
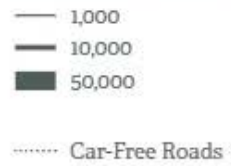
Weekday Vehicle Volumes

Daily Vehicle Volumes



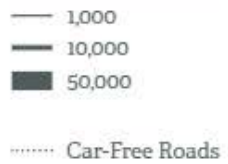
Weekday Vehicle Volumes

Daily Vehicle Volumes



Weekday Vehicle Volumes

Daily Vehicle Volumes



Change from Pre-COVID to Winter 2021



Change in Weekend Vehicle Volumes

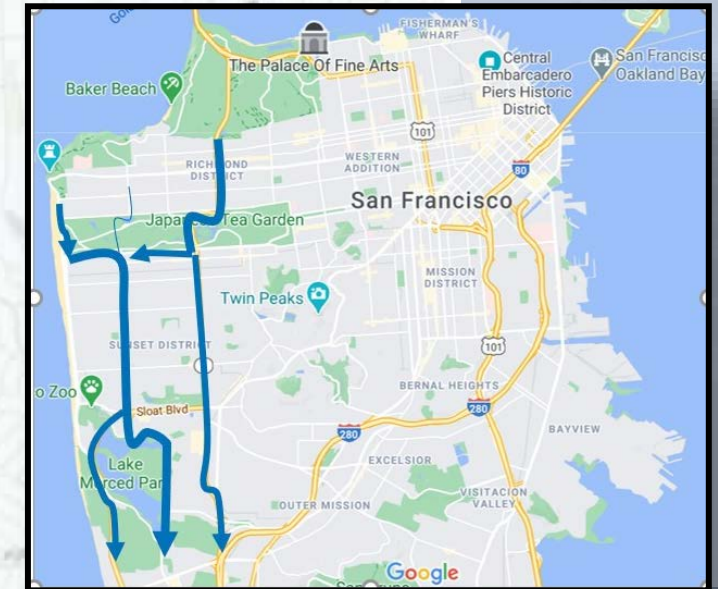
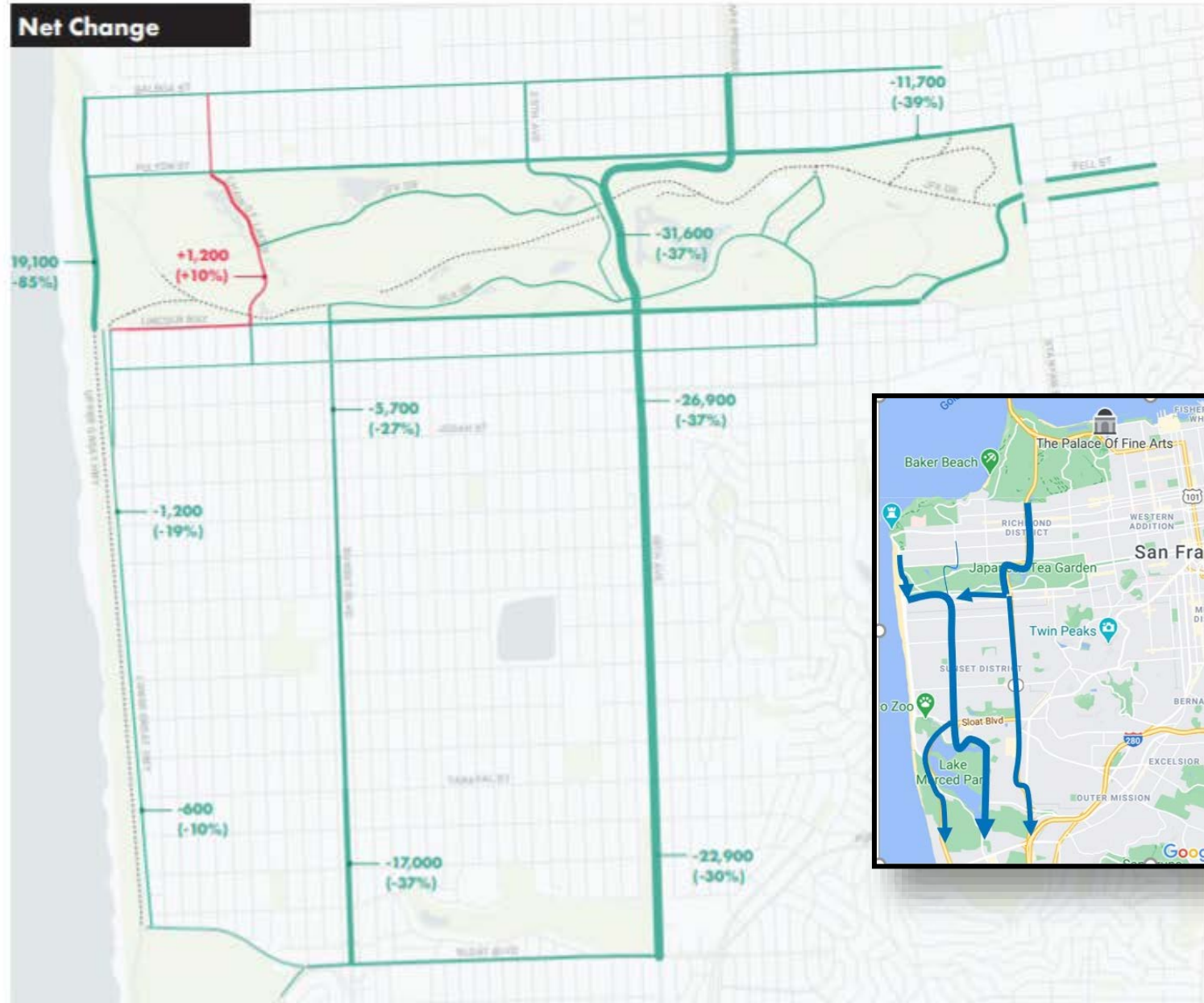
Weekend Vehicle Volumes

Daily Vehicle Volumes



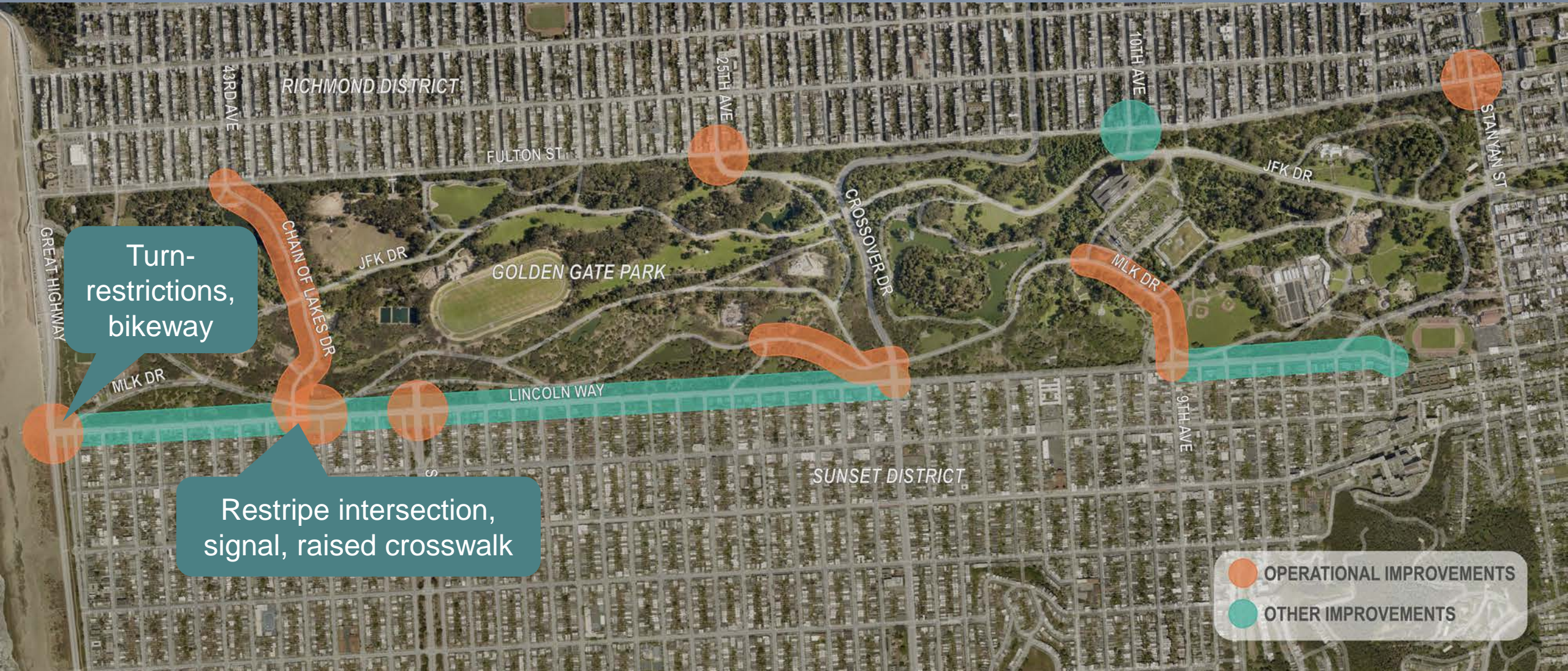
..... Car-Free Roads

Change from Pre-COVID



Solutions / Improvements

TRANSPORTATION NETWORK





Future Opportunities

- Ongoing analysis gives insight **under unique pandemic conditions**
- But do not know impacts and benefits **with full activity**
- As we re-emerge, will need to re-evaluate
 - The **value** the Great Highway would provide as open space
 - The **impacts** it would have, especially on circulation
 - **Community** opinions and concerns



Footprint

- Full or partial roadway, Great Highway Extension, evaluation area

Timing

- Full-time, seasonal, weekend

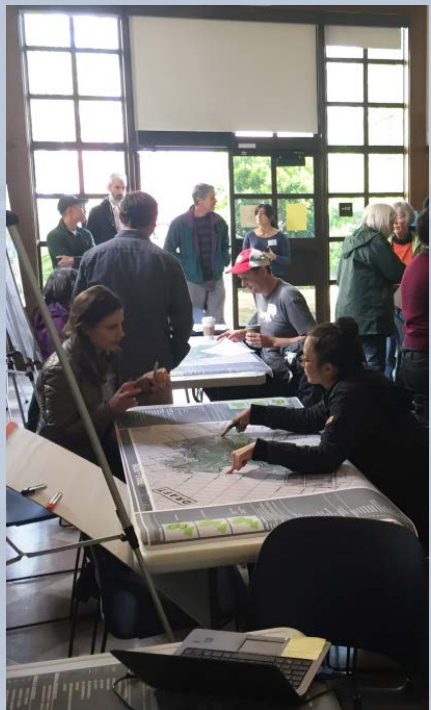
Duration

- Evaluation time, preparing for next steps

Evaluation Criteria

- Open space, street conditions, accessibility, and emergency response





- Outreach for **broad and diverse engagement** using a **multilingual** approach
- **Community meetings** and open houses
- **Focus groups** to discuss stakeholder experiences, opportunities and challenges
- Partnership with **disabled community**
- **SFMTA CAC** and **PROSAC**
- Trying things out **on the ground**
- **Site walks**
- **Surveys** and **online outreach**

SPRING 2021

Gather Information

- Today's hearing
- D4 Mobility Great Highway Evaluation (June 22)
- Westside Operations Analysis

SUMMER 2021

Explore Possibilities

- Community outreach
- Explore activations
- Explore joint stewardship (NPS, PUC, PW)
- Traffic interventions

Prepare Recommendation

- Design pilot
- MTA CAC and PROSAC
- CEQA review

FALL 2021

Move Forward

- Propose pilot to Rec Park Commission & MTA Board

Decide

- Propose pilot to Board of Supervisors
- OR*
- Return to a 4-lane road after emergency



Thank You