

## SFMTA - TASC SUMMARY SHEET

<b>PreStaff_Date:</b> 3/16/2021 <b>Requested_by:</b> SFMTA <b>Handled:</b> Shahram Shariati <i>WL</i> <b>Section Head :</b> M.Sallaberry <i>MS</i>	<input type="checkbox"/> <b>Public Hearing Consent</b> <input checked="" type="checkbox"/> <b>Public Hearing Regular</b> <input type="checkbox"/> <b>Informational / Other</b> <small>PH - Regular</small>	<b>No objections:</b> _____ <b>Item Held:</b> _____ <b>Other:</b> _____
---	---	---

**Location:** Polk Street/Sutter Street, Polk Street/Willow Street, Polk Street/Ellis Street and Polk Street/Hemlock Street

**Subject:** Red Zone

**PROPOSAL / REQUEST:**

RESCIND - GENERAL METERED PARKING (9AM TO 6PM, MONDAY THROUGH SATURDAY)  
 Hemlock Street, south side, from 4 feet to 25 feet west of Polk Street (meter space #101).  
 Ellis Street, north side, from 12 feet to 33 feet east of Polk Street (meter space #746).

RESCIND - YELLOW METERED LOADING ZONE (30 MINUTE LIMIT 7AM TO 6PM, SATURDAY & 7AM TO 4PM, MONDAY THROUGH FRIDAY)  
 Sutter Street, north side, from 8 feet to 29 feet east of Polk Street (meter space #1158).

RESCIND - YELLOW METERED LOADING ZONE (30 MINUTE LIMIT 8AM TO 6PM, MONDAY THROUGH SATURDAY)  
 Willow Street, south side, from Polk Street to 111 feet east (meter space #53, 51, 49, 47 & 45).

RESCIND - YELLOW METERED LOADING ZONE (30 MINUTE LIMIT 9AM TO 6PM, MONDAY THROUGH SATURDAY)  
 Willow Street, south side, from 20 feet to 60 feet east of Van Ness Avenue (meter space #147 & 145).

RESCIND - YELLOW METERED LOADING ZONE (30 MINUTE LIMIT 6AM TO 11AM, MONDAY THROUGH SATURDAY)  
 Ellis Street, south side, from 27 feet to 115 feet east of Polk Street (meter space #745, 743, 741 & 739).

RESCIND - GREEN METERED PARKING SPACE (30 MINUTE LIMIT 9AM TO 6PM, MONDAY THROUGH SATURDAY)  
 Sutter Street, south side, from 4 feet to 22 feet east of Polk Street (meter space #1155-G).

ESTABLISH - RED ZONES  
 Sutter Street, north side, from 8 feet to 29 feet east of Polk Street.  
 Sutter Street, south side, from 4 feet to 22 feet east of Polk Street.  
 Willow Street, south side, from Polk Street to 24 feet east.  
 Ellis Street, north side, from 12 feet to 33 feet east of Polk Street.  
 Hemlock Street, south side, from 4 feet to 25 feet west of Polk Street.

ESTABLISH - YELLOW METERED LOADING ZONE (30 MINUTE LIMIT 7AM TO 6PM, SATURDAY & 7AM TO 4PM, MONDAY THROUGH FRIDAY)  
 Sutter Street, north side, from 50 feet to 71 feet east of Polk Street (converts general meter space #1154 into a yellow metered space).

ESTABLISH - YELLOW METERED LOADING ZONE (30 MINUTE LIMIT 7AM TO 6PM, MONDAY THROUGH SATURDAY)  
 Willow Street, south side, from 24 feet to 131 feet east of Polk Street (meter space #51, 49, 47 & 45. Converts general meter parking space #43 into a yellow metered space).  
 Willow Street, south side, from 20 feet to 60 feet east of Van Ness Avenue (meter space #147 & 145).  
 Ellis Street, south side, from 27 feet to 115 feet east of Polk Street (meter space #745, 743, 741 & 739).

ESTABLISH - GREEN METERED PARKING SPACE (30 MINUTE LIMIT 9AM TO 6PM, MONDAY THROUGH SATURDAY)  
 Sutter Street, south side, from 163 feet to 181 feet east of Polk Street (converts general meter space #1139 into a green metered space).

(Supervisor Districts 3 & 6)

This project is designed to improve safety by daylighting intersections.

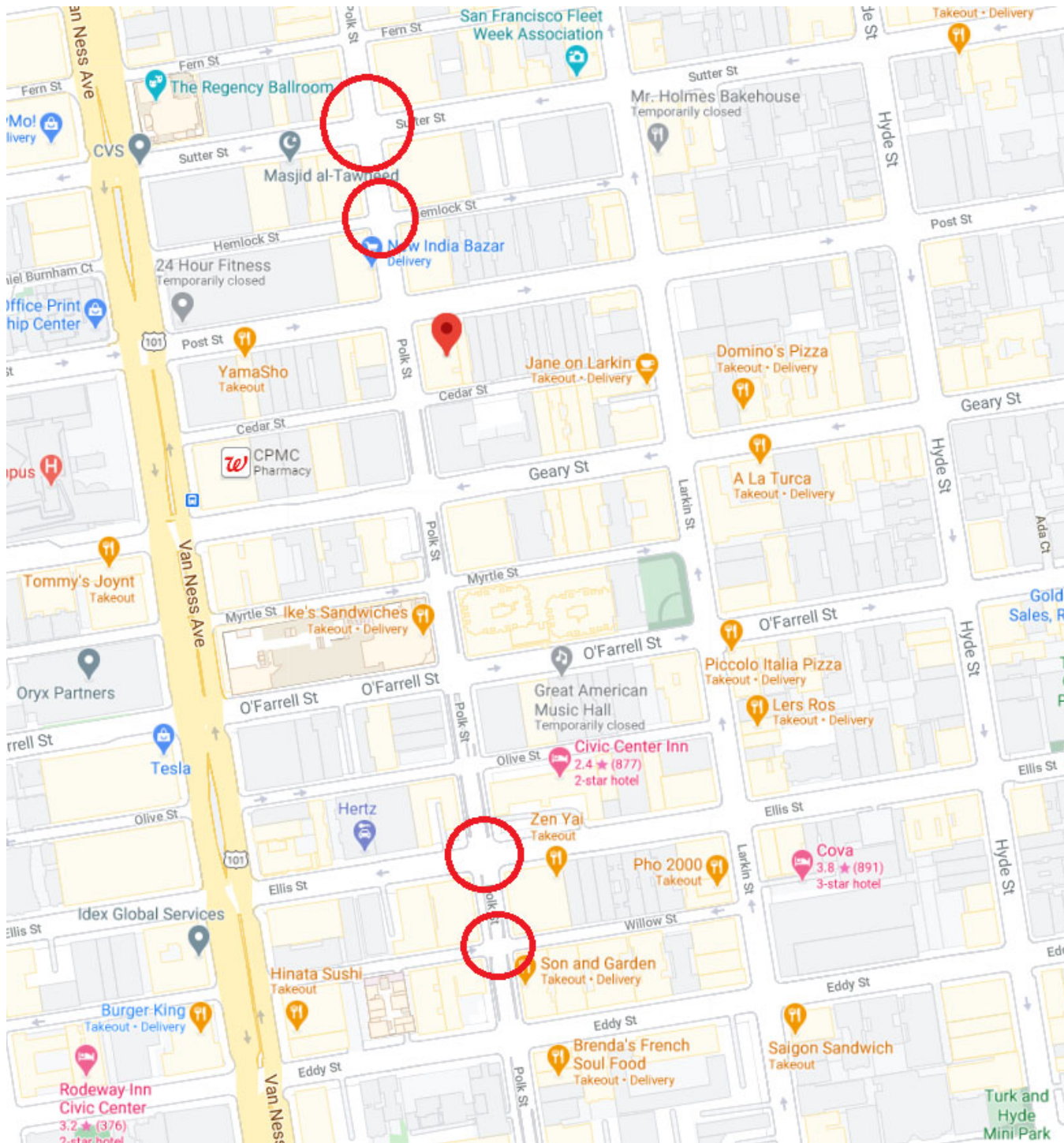
Shahram Shariati, Shahram.Shariati@sfmta.com

**BACKGROUND INFORMATION / COMMENTS**

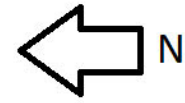
This is a continuation of the Polk Street improvement project where we are now daylighting the intersections along the corridor to improve safety. Polk is on the high injury network.

**HEARING NOTIFICATION AND PROCESSING NOTES:**

**ENVIRONMENTAL CLEARANCE BY:**  
 SFMTA  Attached  Pending



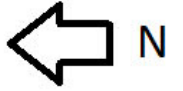
CITY MAP



Street View - Polk/Sutter  
Existing Conditions



Street View - Polk/Hemlock Existing Conditions



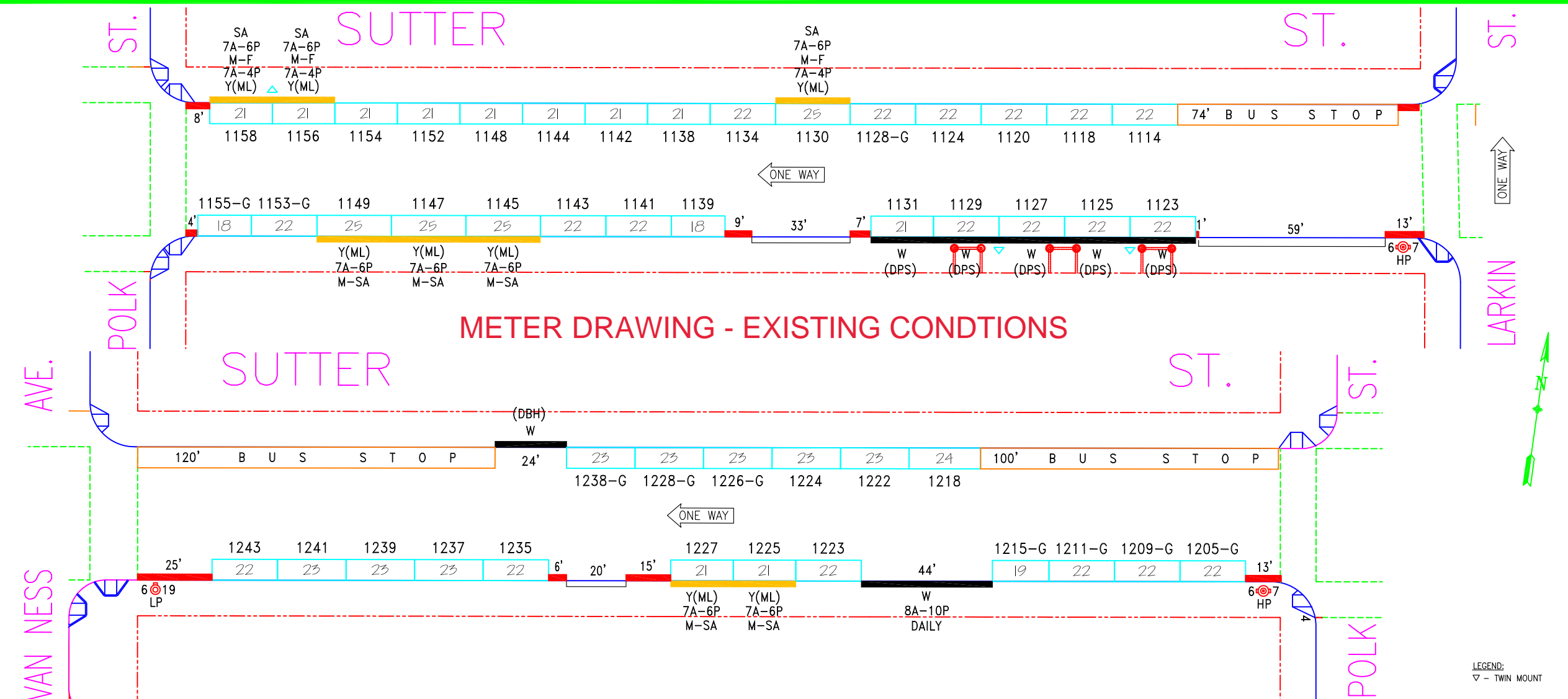
Street View - Polk/Ellis Existing Conditions



Street View - Polk/Willow Existing Conditions




Street View - Polk/Willow Existing Conditions



LEGEND:  
▽ - TWIN MOUNT

NO.	REVISION DESCRIPTION	BY	DATE	DIR/RES
5	Install#1123-1131 for PLZ-DPS,S/S	JB	9/23/15	
3	Install#1235,37,39,41,43-post const.	JB	7/29/13	
4	Per Field: Install missing GMP#1134	JB	11/21/14	


**SAN FRANCISCO MUNICIPAL TRANSPORTATION AGENCY**  
**CITY AND COUNTY OF SAN FRANCISCO**  
 PARKING METER SPACES

SIDE	TOW-AWAY		METER CT.		GENERAL			LOADING		METERED SPACES						TOTAL	
	AM	PM	SS	MS	GMP	MC	TIMES	DAYS	ML	MTL	6-W	15 MIN	30 MIN	1 HR	2 HR		10 HR
ODD			25		20		9A-6P	M-SA	5				11		14		25
EVEN		4P-6P	21		18		9A-4/6P	M-F/SA	3				7		14		21

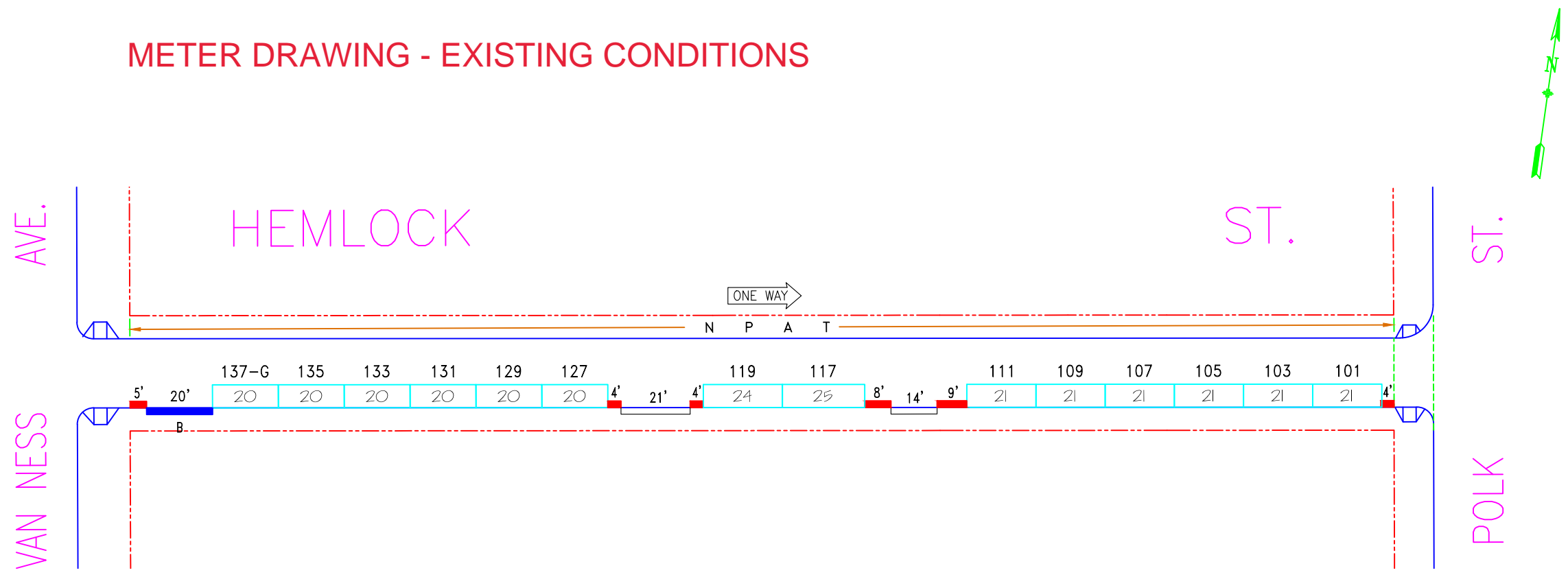
**SUTTER ST. (SUT, 666)**  
**(1100-1200) BLOCK**  
 Meters #666-11XY  
**LARKIN ST. TO VAN NESS AVE.**

AREA  
3


SCALE: **1"=40'**      DATE: **7/29/13**      BY: **JB**



# METER DRAWING - EXISTING CONDITIONS



NO.	REVISION DESCRIPTION	BY	DATE	DIR/RES	4	Restore #109 - S/S (Post Const.)	JB	3/1/18									
2	Est.Bluezone,MOS#139/Est.Green#137	JB	8/15/17	5805													
3	Revoke ML on #117,119 - S/S	JB	11/13/17	5839													
	TOW-AWAY	METER CT.	GENERAL			LOADING		METERED SPACES									
SIDE	AM	PM	SS	MS	GMP	MC	TIMES	DAYS	ML	MTL	6-W	15 MIN	30 MIN	1 HR	2 HR	10 HR	TOTAL
ODD			14		14		9A-6P	M-SA					1		13		14
EVEN																	



**SAN FRANCISCO MUNICIPAL TRANSPORTATION AGENCY**  
**CITY AND COUNTY OF SAN FRANCISCO**  
**PARKING METER SPACES**

**HEMLOCK ST. (HEM, 465)**  
**(100) BLOCK**  
 Meters #465-01XXY

**POLK ST. TO VAN NESS AVE.**

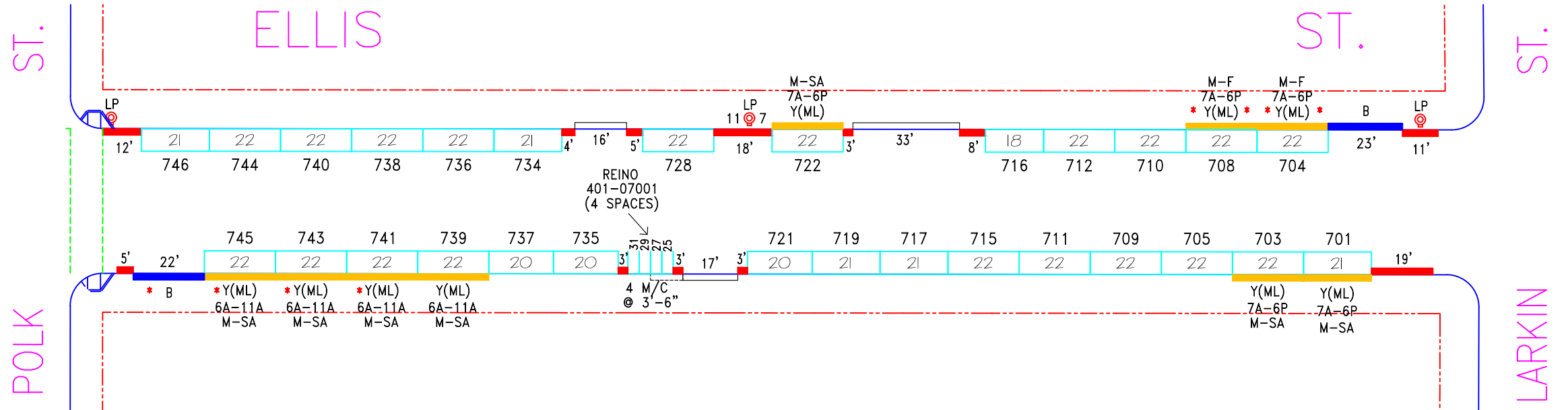
**AREA 3**

SCALE: **1"=40'**

DATE: **8/15/17**

BY: **JB**

# METER DRAWING - EXISTING CONDITIONS



NO.	REVISION DESCRIPTION	BY	DATE	DIR/RES	3	Per Field:Changed M/C#7001,735-47	JB	2/16/15
1	MOS#729,Est.M/C#733-39,Rn.#741-55	DY	11/4/11	3976	4.a	Est.BlueZ,MOSML#747,Est.ML#739-S/S	JB	1/25/18 15-034
2	Est. 2-way Operation,Rev. mtrs. S/S	JB	4/9/12		4.b	Establish BlueZone, MOS #702-N/S	JB	1/25/18 16-026



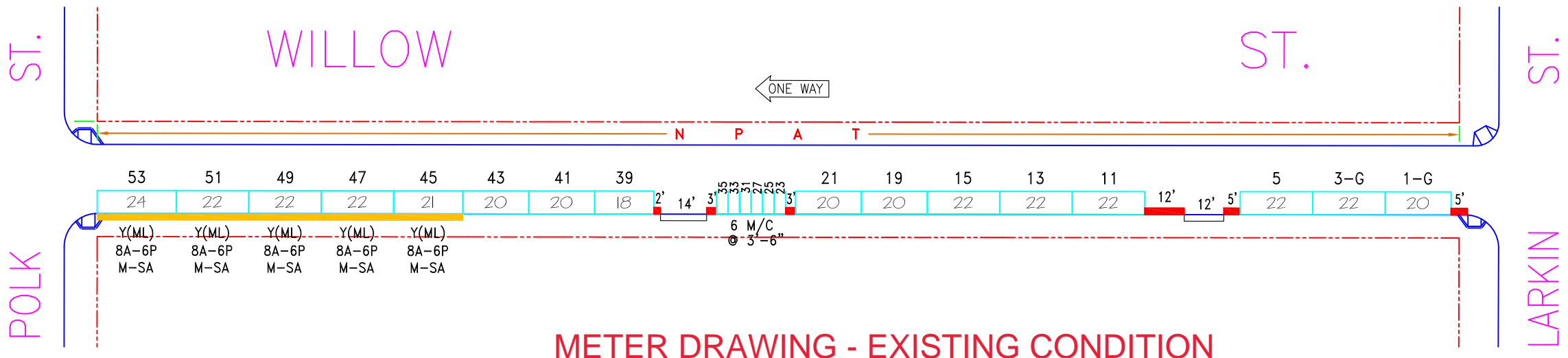
**SAN FRANCISCO MUNICIPAL TRANSPORTATION AGENCY**  
**CITY AND COUNTY OF SAN FRANCISCO**  
 PARKING METER SPACES

SIDE	TOW-AWAY		METER CT.		GENERAL				LOADING		METERED SPACES							TOTAL
	AM	PM	SS	MS	GMP	MC	TIMES	DAYS	ML	MTL	6-W	15 MIN	30 MIN	1 HR	2 HR	10 HR		
ODD			15	1	9	4	9A-6P	M-SA	6				6		9	4	19	
EVEN			13		10		9A-6P	M-SA	3				3		10		13	

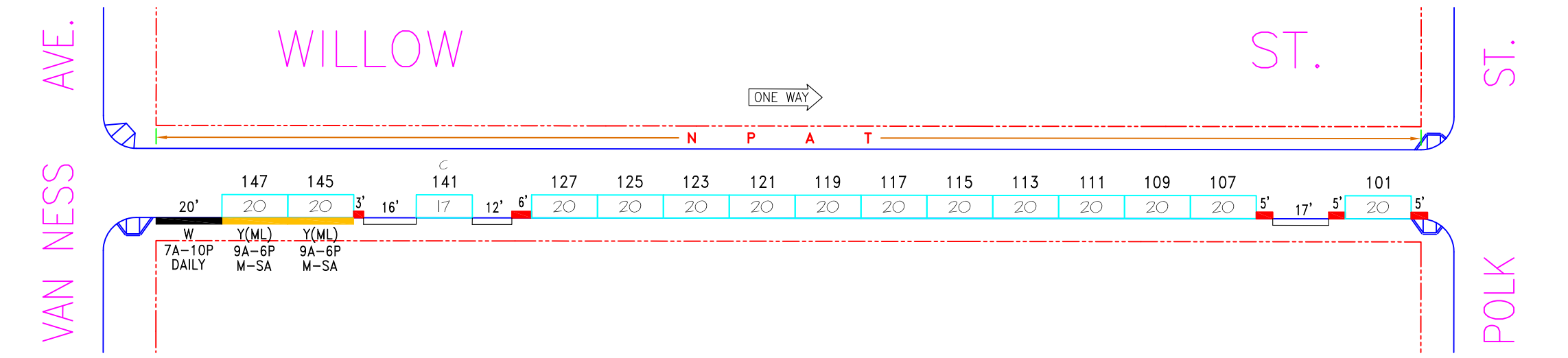
**ELLIS ST. (ELL, 401)**  
**(700) BLOCK**  
 Meters #401-07XXY  
**LARKIN ST. TO POLK ST.**

SCALE: **1"=40'**      DATE: **11/12/09**      BY: **JB**

**AREA**  
**3**



METER DRAWING - EXISTING CONDITION



NO.	REVISION DESCRIPTION	BY	DATE	DIR/RES	7	Est. ML#145,147 & PLZ,MOS149-S/S	JB	7/20/19	6106
5	Install GMP #11(raised curb) - S/S	JB	8/25/16						
6	Establish ML#149 - S/S	JB	3/7/17	5730					

**SAN FRANCISCO MUNICIPAL TRANSPORTATION AGENCY**  
**CITY AND COUNTY OF SAN FRANCISCO**  
 PARKING METER SPACES

SIDE	TOW-AWAY		METER CT.		GENERAL				LOADING			METERED SPACES						TOTAL
	AM	PM	SS	MS	GMP	MC	TIMES	DAYS	ML	MTL	6-W	15 MIN	30 MIN	1 HR	2 HR	10 HR		
ODD			37		24	6	9A-6P	M-SA	5				9		22	6	37	
EVEN																		

**WILLOW ST. (WIL, 724)**  
**(UNIT/100) BLOCK**  
 Meters #724-00/01XXY

**LARKIN ST. TO VAN NESS AVE.**

SCALE: **1"=40'**      DATE: **8/25/16**      BY: **JB**

**AREA 3**

# TransBASE Internal Dashboard

Geographic Extent: 25208000: SUTTER ST at POLK ST  
 Spatial Intersect: SFMTA Intersection Related (<=20ft or <=150ft if Rear End)  
 Data Range: 10/01/2015 to 09/30/2020  
 Pull Date: 1/25/2021

## Polk/Sutter Collision Data Table

### Collision/Party/Victim Table Showing 1 to 13 of 13 entries

Count of Fatal Collisions: 0  
 Count of Non-Fatal Injury Collisions: 13  
 Total Count of Fatal/Non-Fatal Injury Collisions: 13

Case ID	Collision Date	Collision Time	Day of Week	Primary Road	Secondary Road	Distance	Direction	Party 1 Type	Party 1 Direction of Travel	Party 1 Movement Preceding Crash	Party 2 Type	Party 2 Direction of Travel	Party 2 Movement Preceding Crash	Vehicle Code Violation	Highest Degree of Injury	Type of Collision	Motor Vehicle Involved With	Weather	Lighting
190843332	11/07/2019	12:51	Thursday	POLK ST	SUTTER ST	0	Not Stated	Bicyclist	North	Proceeding Straight	Driver	West	Proceeding Straight	CVC 21453(a)	Injury (Other Visible)	Not Stated	Bicycle	Clear	Daylight
190726415	09/27/2019	22:10	Friday	POLK ST	SUTTER ST	0	Not Stated	Driver	North	Making Left Turn	Bicyclist	South	Proceeding Straight	CVC 21800(a)	Injury (Other Visible)	Not Stated	Bicycle	Clear	Dark - Street Lights
190609968	08/18/2019	21:42	Sunday	SUTTER ST	POLK ST	0	Not Stated	Driver	West	Proceeding Straight	Driver	North	Proceeding Straight	CVC 23152(a)	Injury (Complaint of Pain)	Broadside	Other Motor Vehicle	Clear	Dark - Street Lights
190350622	05/16/2019	12:00	Thursday	POLK ST	SUTTER ST	0	Not Stated	Driver	South	Making Left Turn	Pedestrian	East	Proceeding Straight	CVC 21950(a)	Injury (Complaint of Pain)	Head-On	Pedestrian	Raining	Daylight
180290232	04/19/2018	16:41	Thursday	POLK ST	SUTTER ST	0	Not Stated	Driver	West	Making Right Turn	Bicyclist	South	Proceeding Straight	CVC 22107	Injury (Complaint of Pain)	Broadside	Bicycle	Clear	Daylight
170409120	05/18/2017	17:49	Thursday	POLK ST	SUTTER ST	0	Not Stated				Driver	North	Stopped In Road	CVC 22517	Injury (Other Visible)	Head-On	Bicycle	Clear	Daylight
170299965	04/12/2017	13:15	Wednesday	SUTTER ST	POLK ST	0	Not Stated	Driver	East	Proceeding Straight	Driver	East	Stopped In Road	CVC 22350	Injury (Complaint of Pain)	Rear End	Other Motor Vehicle	Clear	Daylight
160969883	11/29/2016	05:54	Tuesday	POLK ST	SUTTER ST	5	South	Driver	South	Making Left Turn	Pedestrian	East	Proceeding Straight	CVC 21950(a)	Injury (Complaint of Pain)	Other	Pedestrian	Clear	Dark - Street Lights
160192498	03/05/2016	23:55	Saturday	SUTTER ST	POLK ST	0	Not Stated	Driver	South	Making Right Turn	Pedestrian	East	Proceeding Straight	CVC 21950(a)	Injury (Complaint of Pain)	Vehicle/ Pedestrian	Pedestrian	Raining	Dark - Street Lights
160142744	02/17/2016	16:30	Wednesday	POLK ST	SUTTER ST	0	Not Stated	Driver	South	Making Right Turn	Bicyclist	South	Proceeding Straight	CVC Unknown	Injury (Complaint of Pain)	Sideswipe	Bicycle	Raining	Daylight
150997612	11/16/2015	11:05	Monday	SUTTER ST	POLK ST	0	Not Stated	Driver	North	Proceeding Straight	Driver	West	Proceeding Straight	CVC 21453(a)	Injury (Complaint of Pain)	Broadside	Other Motor Vehicle	Clear	Daylight
150992979	11/14/2015	17:30	Saturday	POLK ST	SUTTER ST	0	Not Stated	Bicyclist	South	Proceeding Straight	Driver	South	Stopped In Road	CVC Unknown	Injury (Other Visible)	Rear End	Bicycle	Clear	Dark - Street Lights
150870745	10/04/2015	23:34	Sunday	POLK ST	SUTTER ST	0	Not Stated	Driver	South	Making Left Turn	Pedestrian	East	Proceeding Straight	CVC Unknown	Injury (Complaint of Pain)	Vehicle/ Pedestrian	Pedestrian	Clear	Dark - Street Lights

# TransBASE Internal Dashboard

Geographic Extent: 25201000: HEMLOCK ST at POLK ST

Spatial Intersect: SFMTA Intersection Related (<=20ft or <=150ft if Rear End)

Data Range: 10/01/2015 to 09/30/2020

Pull Date: 1/25/2021

## Polk/Hemlock Collision Data Table

### Collision/Party/Victim Table

Showing 1 to 2 of 2 entries

Count of Fatal Collisions: 0

Count of Non-Fatal Injury Collisions: 2

Total Count of Fatal/Non-Fatal Injury Collisions: 2

Case ID	Collision Date	Collision Time	Day of Week	Primary Road	Secondary Road	Distance	Direction	Party 1 Type	Party 1 Direction of Travel	Party 1 Movement Preceding Crash	Party 2 Type	Party 2 Direction of Travel	Party 2 Movement Preceding Crash	Vehicle Code Violation	Highest Degree of Injury	Type of Collision	Motor Vehicle Involved With	Weather	Lighting
190212389	03/25/2019	16:50	Monday	POLK ST	HEMLOCK ST	0	Not Stated	Driver	East	Making Left Turn	Bicyclist	North	Proceeding Straight	CVC 21800(c)	Injury (Complaint of Pain)	Broadside	Bicycle	Raining	Daylight
161032067	12/20/2016	13:50	Tuesday	POLK ST	POST ST	75	North	Driver	South	Proceeding Straight	Driver	South	Stopped In Road	CVC 21703	Injury (Complaint of Pain)	Rear End	Other Motor Vehicle	Clear	Daylight

# TransBASE Internal Dashboard

Geographic Extent: 25178000: ELLIS ST at POLK ST  
 Spatial Intersect: SFMTA Intersection Related (<=20ft or <=150ft if Rear End)  
 Data Range: 10/01/2015 to 09/30/2020  
 Pull Date: 1/25/2021

## Polk/Ellis Collision Data Table

### Collision/Party/Victim Table Showing 1 to 8 of 8 entries

Count of Fatal Collisions: 0  
 Count of Non-Fatal Injury Collisions: 8  
 Total Count of Fatal/Non-Fatal Injury Collisions: 8

Case ID	Collision Date	Collision Time	Day of Week	Primary Road	Secondary Road	Distance	Direction	Party 1 Type	Party 1 Direction of Travel	Party 1 Movement Preceding Crash	Party 2 Type	Party 2 Direction of Travel	Party 2 Movement Preceding Crash	Vehicle Code Violation	Highest Degree of Injury	Type of Collision	Motor Vehicle Involved With	Weather	Lighting
200289856	05/12/2020	09:56	Tuesday	ELLIS ST	POLK ST	0	Not Stated	Bicyclist	East	Traveling Wrong Way	Driver	North	Proceeding Straight	CVC 21657	Injury (Other Visible)	Broadside	Bicycle	Clear	Daylight
190940803	12/14/2019	17:53	Saturday	POLK ST	ELLIS ST	0	Not Stated	Driver	South	Proceeding Straight	Driver	South	Making Right Turn	CVC 21755(a)	Injury (Complaint of Pain)	Broadside	Other Motor Vehicle	Raining	Dark - Street Lights
190281588	04/20/2019	15:05	Saturday	POLK ST	ELLIS ST	0	Not Stated	Driver	South	Making Left Turn	Pedestrian	East	Proceeding Straight	CVC 21950(a)	Injury (Complaint of Pain)	Vehicle/ Pedestrian	Pedestrian	Clear	Daylight
180100807	02/07/2018	01:42	Wednesday	POLK ST	ELLIS ST	0	Not Stated	Bicyclist	South	Proceeding Straight	Pedestrian	East	Proceeding Straight	CVC 22350	Injury (Severe)	Vehicle/ Pedestrian	Pedestrian	Clear	Dark - Street Lights
170526990	06/28/2017	14:00	Wednesday	ELLIS ST	POLK ST	0	Not Stated	Driver	West	Stopped In Road	Pedestrian	East	Stopped In Road	CVC 21950(a)	Injury (Complaint of Pain)	Vehicle/ Pedestrian	Pedestrian	Clear	Daylight
160789807	09/28/2016	23:02	Wednesday	POLK ST	ELLIS ST	0	Not Stated	Bicyclist	South	Proceeding Straight	Driver	North	Making Left Turn	CVC Unknown	Injury (Other Visible)	Broadside	Bicycle	Clear	Dark - Street Lights
160165031	02/25/2016	10:00	Thursday	POLK ST	ELLIS ST	0	Not Stated	Driver	South	Parking Maneuver	Bicyclist	South	Proceeding Straight	CVC 21658(a)	Injury (Complaint of Pain)	Sideswipe	Bicycle	Clear	Daylight
151111740	12/26/2015	13:33	Saturday	POLK ST	ELLIS ST	0	Not Stated	Driver	South	Making Right Turn	Bicyclist	South	Proceeding Straight	CVC 22107	Injury (Complaint of Pain)	Broadside	Bicycle	Clear	Daylight

# TransBASE Internal Dashboard

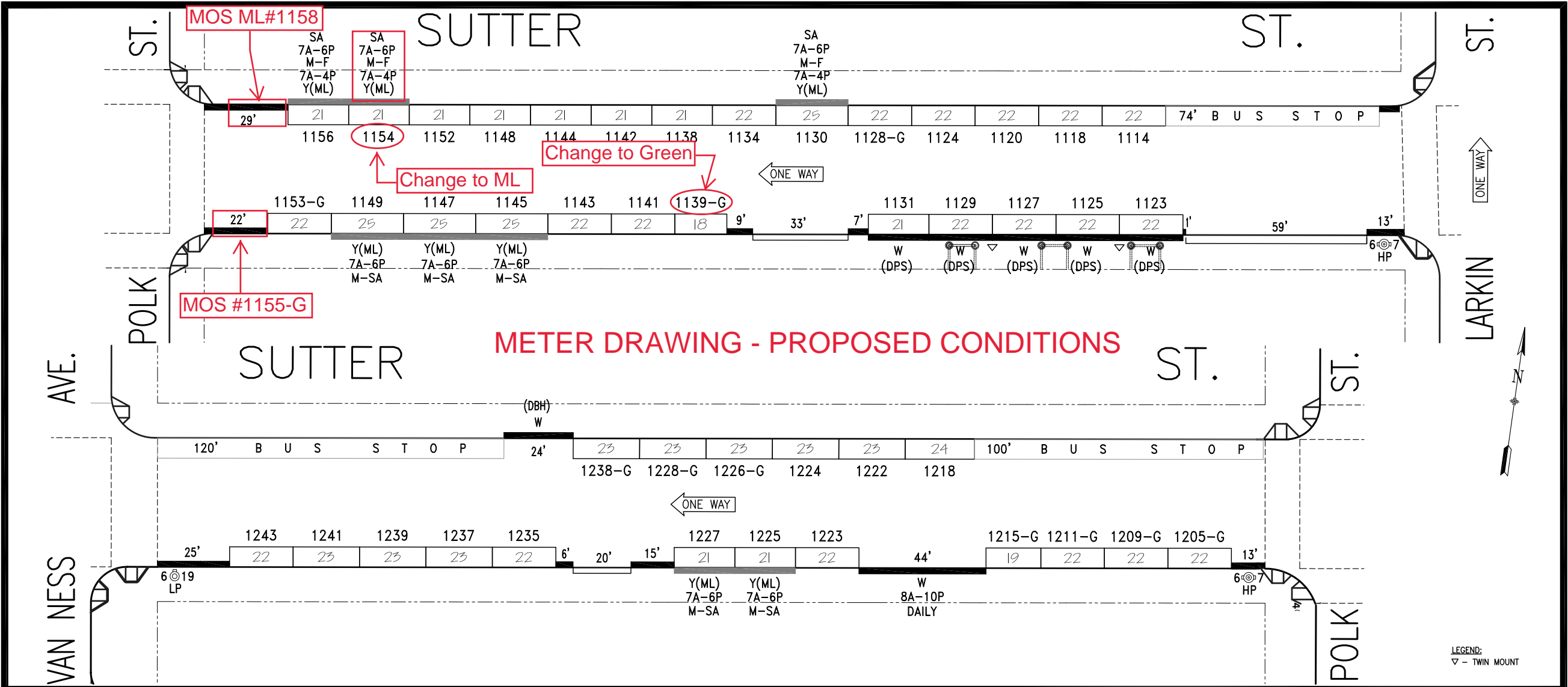
Geographic Extent: 25177000: WILLOW ST at POLK ST  
Spatial Intersect: SFMTA Intersection Related (<=20ft or <=150ft if Rear End)  
Data Range: 10/01/2015 to 09/30/2020  
Pull Date: 1/25/2021

## Polk/Willow Collision Data Table

### Collision/Party/Victim Table Showing 1 to 1 of 1 entries

Count of Fatal Collisions: 0  
Count of Non-Fatal Injury Collisions: 1  
Total Count of Fatal/Non-Fatal Injury Collisions: 1

Case ID	Collision Date	Collision Time	Day of Week	Primary Road	Secondary Road	Distance	Direction	Party 1 Type	Party 1 Direction of Travel	Party 1 Movement Preceding Crash	Party 2 Type	Party 2 Direction of Travel	Party 2 Movement Preceding Crash	Vehicle Code Violation	Highest Degree of Injury	Type of Collision	Motor Vehicle Involved With	Weather	Lighting
190291399	04/24/2019	11:14	Wednesday	POLK ST	WILLOW ST	0	Not Stated	Driver	South	Proceeding Straight	Bicyclist	East	Proceeding Straight	CVC 22350	Injury (Complaint of Pain)	Broadside	Bicycle	Clear	Daylight



NO.	REVISION DESCRIPTION	BY	DATE	DIR/RES
3	Install#1235,37,39,41,43-post const.	JB	7/29/13	
4	Per Field: Install missing GMP#1134	JB	11/21/14	


**SAN FRANCISCO MUNICIPAL TRANSPORTATION AGENCY**  
 CITY AND COUNTY OF SAN FRANCISCO  
 PARKING METER SPACES

SIDE	TOW-AWAY		METER CT.		GENERAL				LOADING			METERED SPACES					TOTAL
	AM	PM	SS	MS	GMP	MC	TIMES	DAYS	ML	MTL	6-W	15 MIN	30 MIN	1 HR	2 HR	10 HR	
ODD			24		19		9A-6P	M-SA	5				11		13		24
EVEN	4P-6P		21		17		9A-4/6P	M-F/SA	3				7		13		20

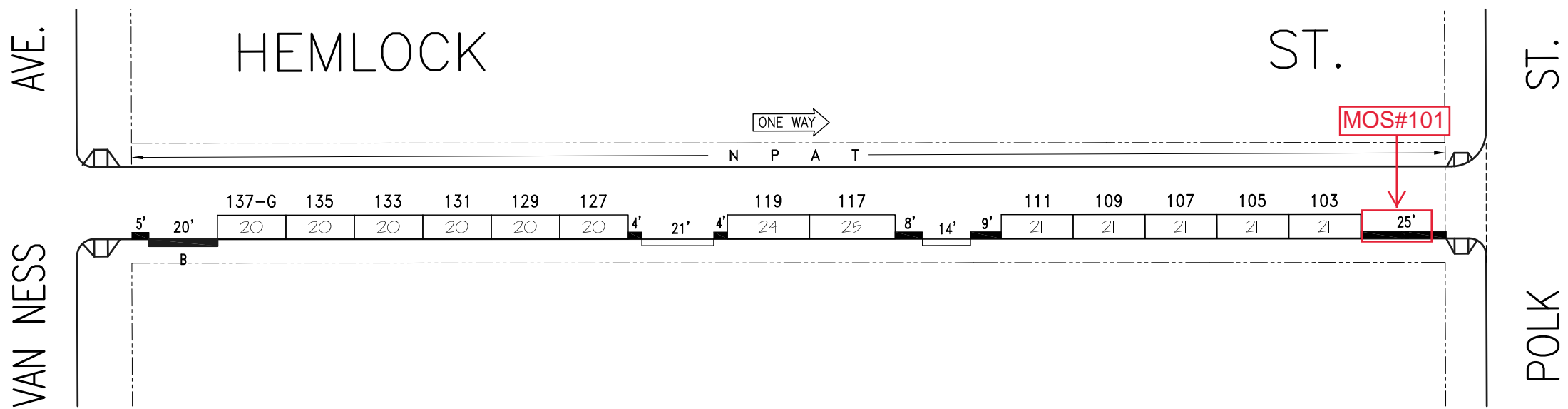
**SUTTER ST. (SUT, 666)**  
**(1100-1200) BLOCK**  
 Meters #666-11XY  
**LARKIN ST. TO VAN NESS AVE.**

SCALE: **1" = 40'**      DATE: **7/29/13**      BY: **JB**


AREA  
3



# METER DRAWING - PROPOSED CONDITIONS



NO.	REVISION DESCRIPTION	BY	DATE	DIR/RES	4	Restore #109 - S/S (Post Const.)	JB	3/1/18									
2	Est.Bluezone,MOS#139/Est.Green#137	JB	8/15/17	5805	5	Daylighting: Add RZ, MOS#101-S/S	JB	1/21/21									
3	Revoke ML on #117,119 - S/S	JB	11/13/17	5839													
TOW-AWAY		METER CT.		GENERAL				LOADING			METERED SPACES						
SIDE	AM	PM	SS	MS	GMP	MC	TIMES	DAYS	ML	MTL	6-W	15 MIN	30 MIN	1 HR	2 HR	10 HR	TOTAL
ODD			13		13		9A-6P	M-SA					1		12		13
EVEN																	



**SAN FRANCISCO MUNICIPAL TRANSPORTATION AGENCY**  
**CITY AND COUNTY OF SAN FRANCISCO**  
 PARKING METER SPACES

**HEMLOCK ST. (HEM, 465)**  
**(100) BLOCK**  
 Meters #465-01XXY

**POLK ST. TO VAN NESS AVE.**

**AREA**  
**3**

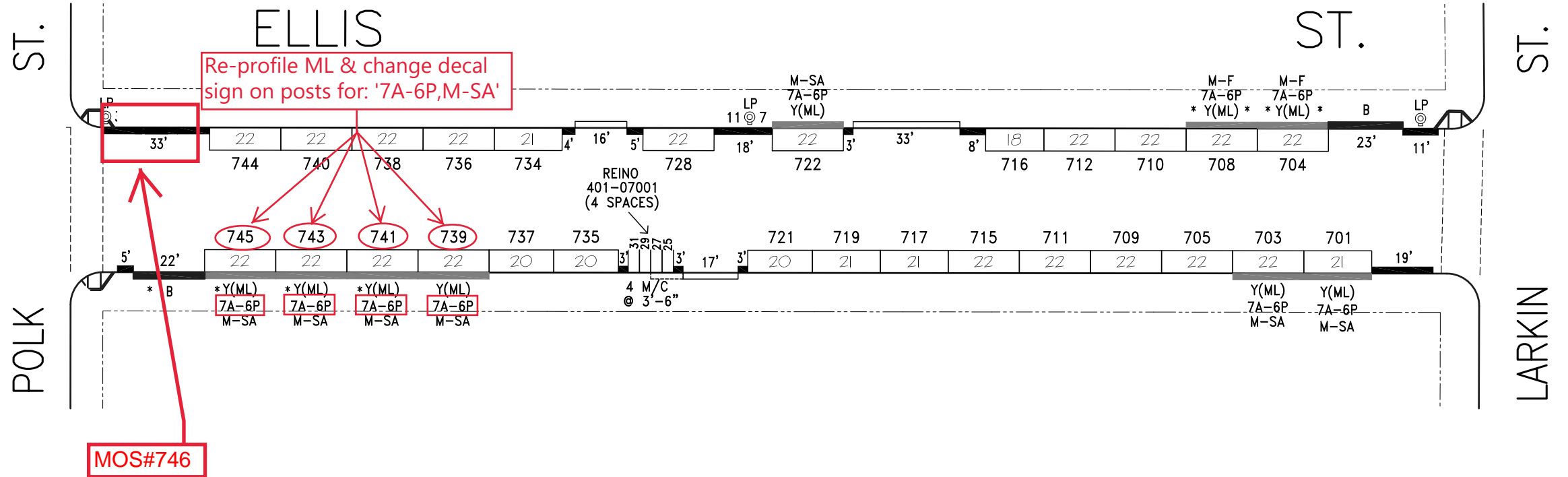
SCALE: **1" = 40'**

DATE: **8/15/17**

BY: **JB**

Prepared: 8/15/17, 10:28 AM  
 Checked: 8/17/17, 10:28 AM  
 Drawn: 8/17/17, 10:28 AM  
 Title: Hemlock St. Meter Drawing - Proposed Conditions

# METER DRAWING - PRPOSED CONDITIONS



NO.	REVISION DESCRIPTION	BY	DATE	DIR/RES	3	Per Field:Changed M/C#7001,735-47	JB	2/16/15
5	Daylighting: Add RZ, MOS#746-N/S	JB	1/20/21	4.a	Est.BlueZ,MOSML#747,Est.ML#739-S/S	JB	1/25/18	15-034
6	Change ML(7A-6P)#739,41,43,45-S/S	JB	2/4/21	4.b	Establish BlueZone, MOS #702-N/S	JB	1/25/18	16-026

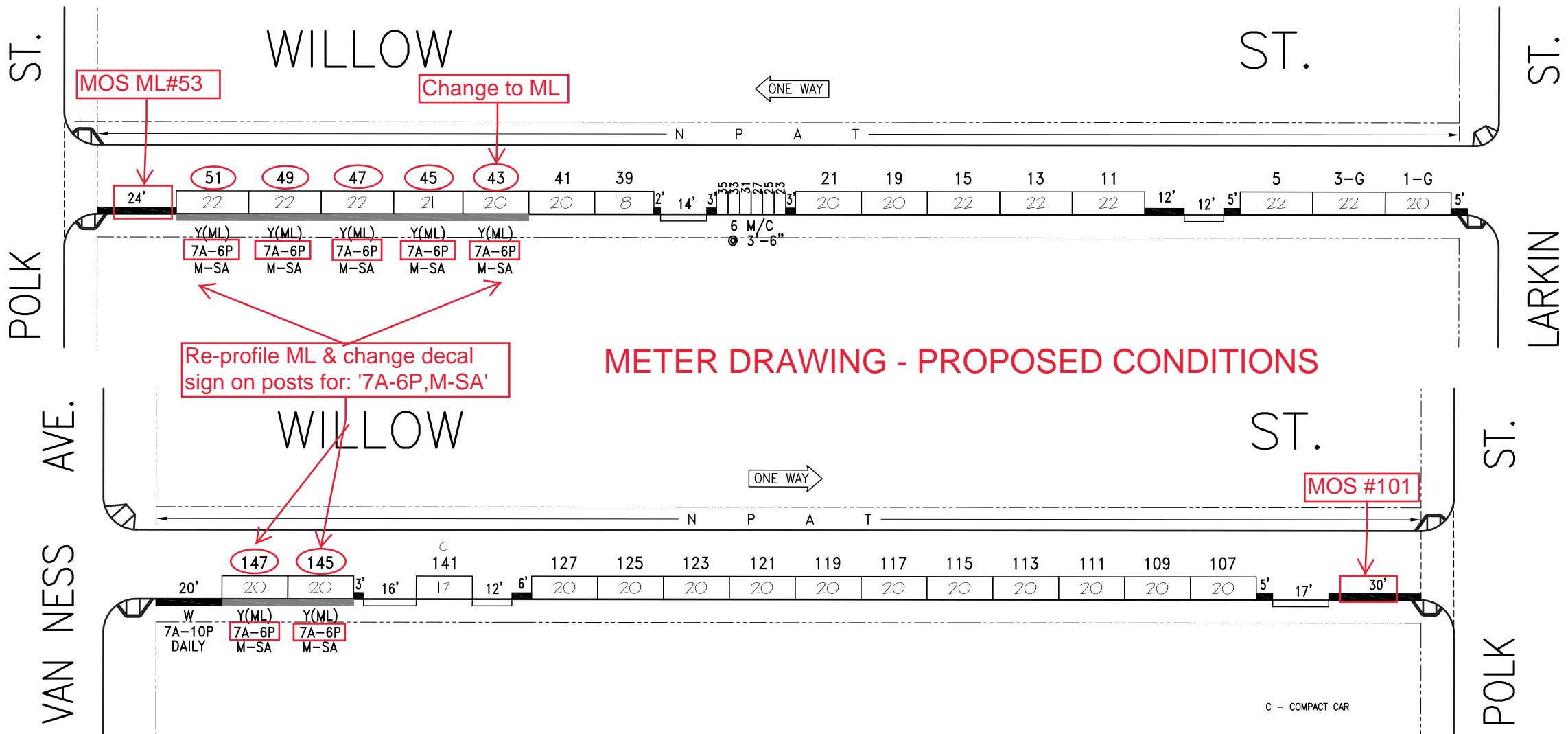

**SAN FRANCISCO MUNICIPAL TRANSPORTATION AGENCY**  
 CITY AND COUNTY OF SAN FRANCISCO  
 PARKING METER SPACES

SIDE	TOW-AWAY		METER CT.		GENERAL				LOADING			METERED SPACES						TOTAL
	AM	PM	SS	MS	GMP	MC	TIMES	DAYS	ML	MTL	6-W	15 MIN	30 MIN	1 HR	2 HR	10 HR		
ODD			15	1	9	4	9A-6P	M-SA	6				6		9	4	19	
EVEN			12		9		9A-6P	M-SA	3				3		9		12	

**ELLIS ST. (ELL, 401)**  
**(700) BLOCK**  
 Meters #401-07XXY  
**LARKIN ST. TO POLK ST.**

SCALE: **1" = 40'**      DATE: **11/12/09**      BY: **JB**

**AREA 3**



**METER DRAWING - PROPOSED CONDITIONS**

NO.	REVISION DESCRIPTION	BY	DATE	DIR/RES	7	Est. ML#145,147 & PLZ,MOS149-S/S	JB	7/20/19	6106
5	Install GMP #11(raised curb) - S/S	JB	8/25/16		8	Daylighting:MOS#53,Chg.#43 to ML-S/S	JB	1/20/21	
6	Establish ML#149 - S/S	JB	3/7/17	5730	9	MOS#101,Chg.ML#43-51,145,47(7A6P)	JB	2/4/21	-


**SAN FRANCISCO MUNICIPAL TRANSPORTATION AGENCY**  
 CITY AND COUNTY OF SAN FRANCISCO  
 PARKING METER SPACES

SIDE	TOW-AWAY		METER CT.		GENERAL				LOADING			METERED SPACES						TOTAL
	AM	PM	SS	MS	GMP	MC	TIMES	DAYS	ML	MTL	6-W	15 MIN	30 MIN	1 HR	2 HR	10 HR		
ODD			35		22	6	9A-6P	M-SA	7				9		20	6	35	
EVEN																		

**WILLOW ST. (WIL, 724)**  
**(UNIT/100) BLOCK**  
 Meters #724-00/01XXY  
**LARKIN ST. TO VAN NESS AVE.**

SCALE: **1" = 40'**      DATE: **8/25/16**      BY: **JB**

**AREA 3**