



SFMTA

# Building Progress: Potrero Yard Neighborhood Working Group

April 2021 Meeting

# Agenda

1. Welcome – 5 minutes
2. Wellness Check-in & Member Announcements – 5 minutes
3. SFMTA Service/COVID Response Updates– 5 minutes
4. Project & Legislative Updates – 5 minutes
5. Public Art Discussion - Susan Pontius & Mary Chou, SF Arts Commission – 20 minutes
6. Shadow Study Presentation - Laura Lynch & Kristina Phung, SF Planning & Chris Townes, SF Rec & Park – 20 minutes
7. Next Steps – 5 minutes
8. Public Comment

# Welcome

- Working Group Members

*If you are joining us by phone, please text Jesse so we know to take you off mute.*

- Members of the Public

*Members of the public who wish to participate in the meeting will be placed on mute, regardless of joining via video or by phone until the end of the meeting for Public Comment.*

- Potential Proposers & Business Interests

*The RFP shortlisted developer teams was announced on SF Bid. All related questions must be directed to SFPW.*

# Virtual Etiquette

- Keep your device on mute unless you are speaking
- Look into the camera when you speak
- Use “gallery” view to see every participant
- Use the Chat function for quick feedback or to comment
- Use the Q&A function to ask questions
- Use the “Raise Your Hand” function to indicate you’d like to speak during an active discussion
- Try not to talk over others
- Give each other time to gather their thoughts and comment before jumping in

# Wellness Check-In

- Would anyone like to share how they are feeling?
- Does anyone have vaccine stories?



# Working Group Member Announcements

- Is there anything you want to share with us?
- Community conversations about the project?

# SFMTA Service/COVID Response Updates

- SFMTA COVID-19 Response/Service Updates

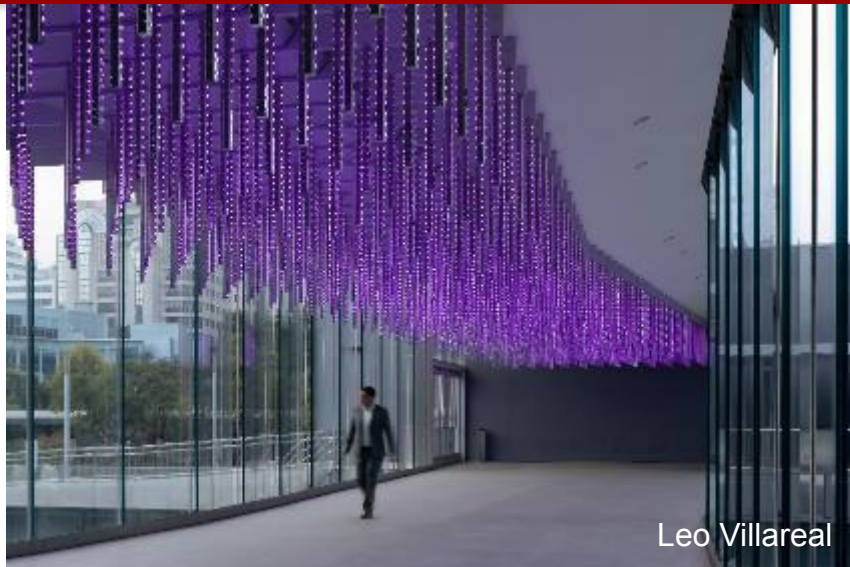
# Project & Legislative Updates

- Welcome Benjamin Barnett!
- Project Specific Legislation Passed at Board of Supervisors Unanimously
- Schedule updates/RFP
- Federal updates



# Public Arts Discussion

- Susan Pontius, SF Arts Commission
- Mary Chou, SF Arts Commission



Leo Villareal

## Public Art Program Overview



Ronald Saunders

**Potrero Yard Modernization Project  
April 5, 2021**

# WHAT IS PUBLIC ART?

## Art Enrichment Ordinance

- passed by voters in 1969
- 2% of eligible construction costs
- acquisition and installation of **original works of art** .... on City property for **aesthetic and cultural enhancement of public buildings and public spaces and engagement of the public with the creative work of artists**, as approved by the Arts Commission.



Sanaz Mazinani

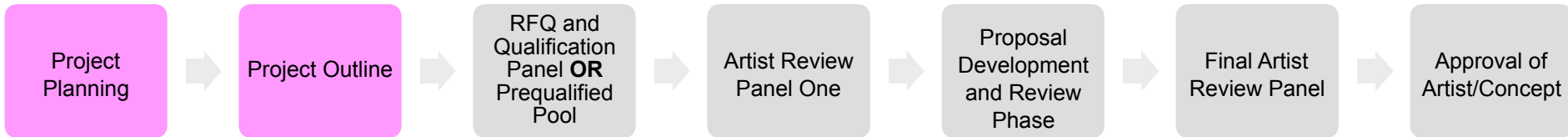
# ROLE OF PUBLIC ART



Shimon Attie with Vale Bruck

- Human connection in civic space
- Emotional, intellectual, or spiritual connection with the viewer.
- Unique sense of identity and place

# PROJECT PLANNING



Develop project goals and artwork opportunities based on input from stakeholders:

## **Community Input:**

- Survey
- Workshops

## **Project Outline:**

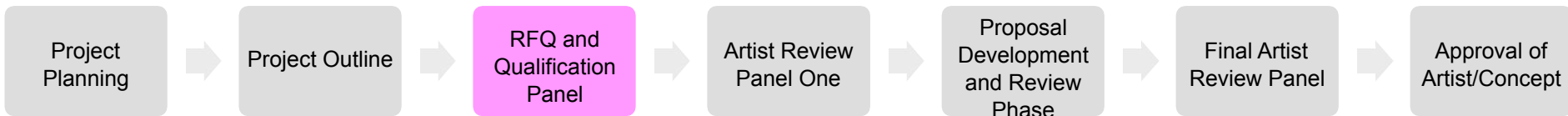
Background, project goals, opportunities, budget, selection process, schedule.

# ARTWORK OPPORTUNITY



- Visibility and accessibility
- Integrated with architecture
- Durability and maintenance
- Artists who can create work for the opportunity

# RFQ/QUALIFICATION PANEL



## **RFQ:**

- Posted for 4 – 6 weeks; online application system
- Outreach for RFQ
- Application workshops for interested artists

## **Qualification Panel:**

- One SFAC staff, two panelists from outside SFAC
- Review all applications and develop shortlist of artists to present to Review Panel
  - Meeting agenda posted online and open to public.

# REVIEW PANEL COMPOSITION

- Client Representative(s)
- Arts Commissioner
- Arts Professionals
- Community Representative(s)
- Sometimes, representative of Design Team



# REVIEW PANEL PROCESS



**Review Panel One:** Review short-list and recommend 3 – 4 artist finalists to develop site-specific proposals for each opportunity.

**Orientation Meeting:** Client, architects, community members and SFAC's Senior Registrar to provide artist finalists with information about the site, project, community, and durability of materials

**Public Display of Proposals:** For two weeks; public comment does not constitute a vote

**Review Panel One:** Recommend one artist/proposal to move forward with project

**Review and Approval of Artist Finalists and Finalist:** Visual Arts Committee and Full Commission

# SFPUC PLANT AND COMMUNITY CENTER

Est. \$12M over 20 years

Community, PUC Plant and Center Staff,  
and arts professionals

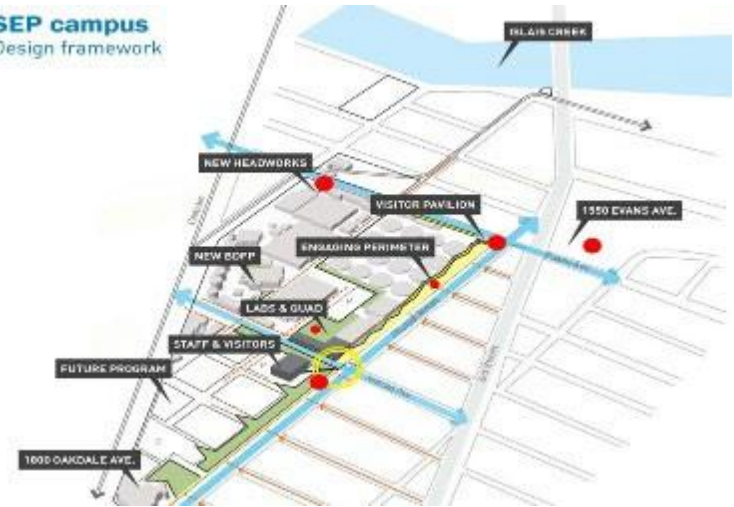
Interviews, focus groups, and workshops,  
including teen think-tank

## Project Goals:

- Proud destination / neighborhood asset
- To provide a local benefit

**Attributes:** Bright, colorful, bold, use of  
light, accessible to public

SEP campus  
Design framework



# SFPUC PLANT AND COMMUNITY CENTER

## Outcomes:

- Partner with local arts orgs – BVOH and Imprint City – for outreach and recruitment
- Artist workshops include one-on-one technical assistance with photography and application submittal
- Meaningful connection to Bayview as scored criteria
- Work on perimeter of plant, community center and possibly areas along Third Street
- 2 dimensional and temporary opportunities
- Community engagement component

# SFPUC PLANT AND COMMUNITY CENTER

ARTISTS: NORIE SATO, PHILLIP HUA, SIRRON NORRIS



# MISSION PLAYGROUND

## ARTIST: MICHAEL BARTALOS



# IN CHAN KAAJAL PARK ARTIST: CARMEN LOMAS GARZA



# VALENCIA STREETScape

ARTIST: MICHAEL ARCEGA



# GARFIELD POOL

## ARTIST: FAVIANNA RODRIGUEZ





# PALEGA RECREATION CENTER

## ARTIST: KELLY ORDING



# MINNIE AND LOVIE WARD RECREATION

## ARTISTS: JON RUBIN AND JIM GOLDBERG



# PORT PIER 92

## ARTIST: HADDAD DRUGAN



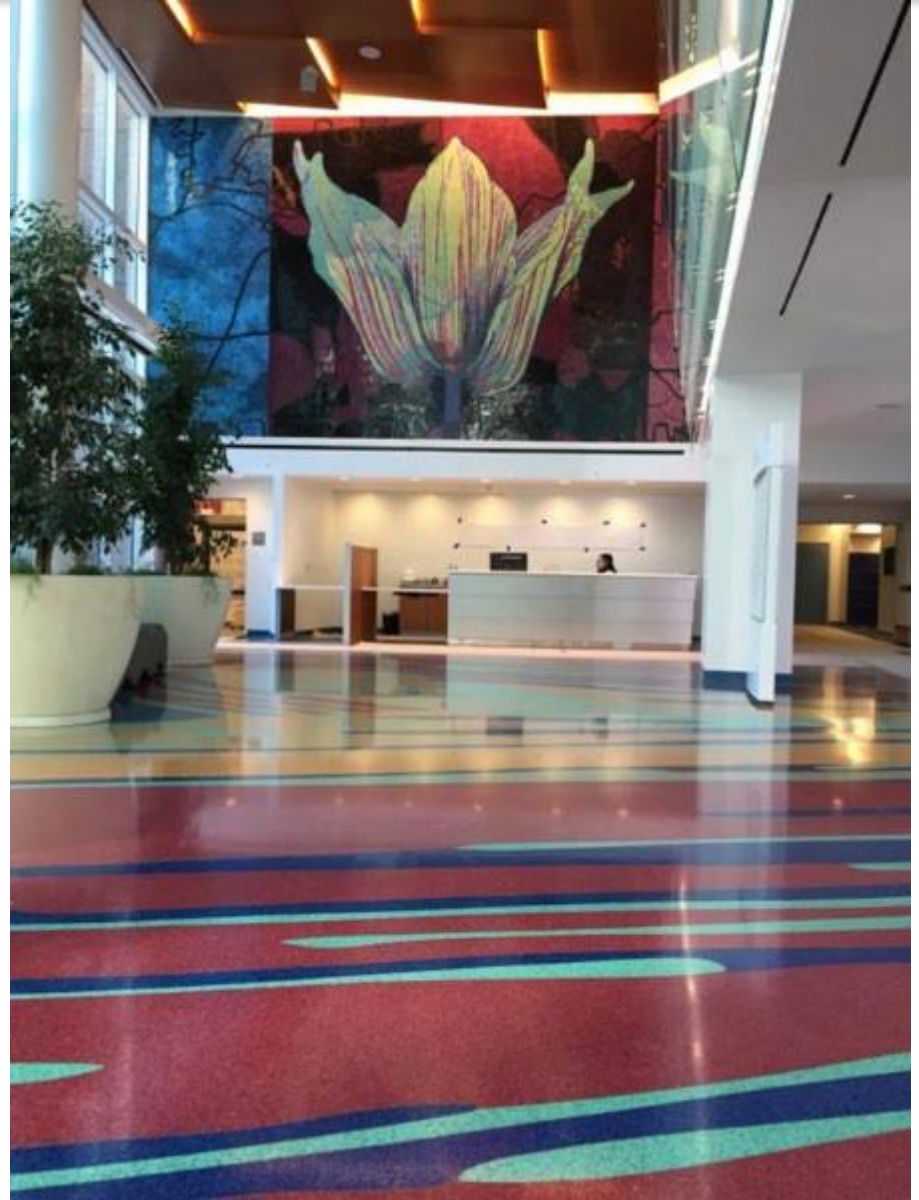
# PUC HEADQUARTERS

## ARTIST: NED KAHN



# SF GENERAL HOSPITAL

ARTISTS: CLIFF GARTEN / RUPERT GARCIA



# SF GENERAL HOSPITAL

## ARTISTS: MILDRED HOWARD / DAVID JOHNSON



# SFO TERMINAL 1

## ARTIST: DANA HEMENWAY



# SFO HOTEL

## ARTIST: JACOB HASHIMOTO





SFO AIRTRAIN  
ARTIST: SARAH CAIN

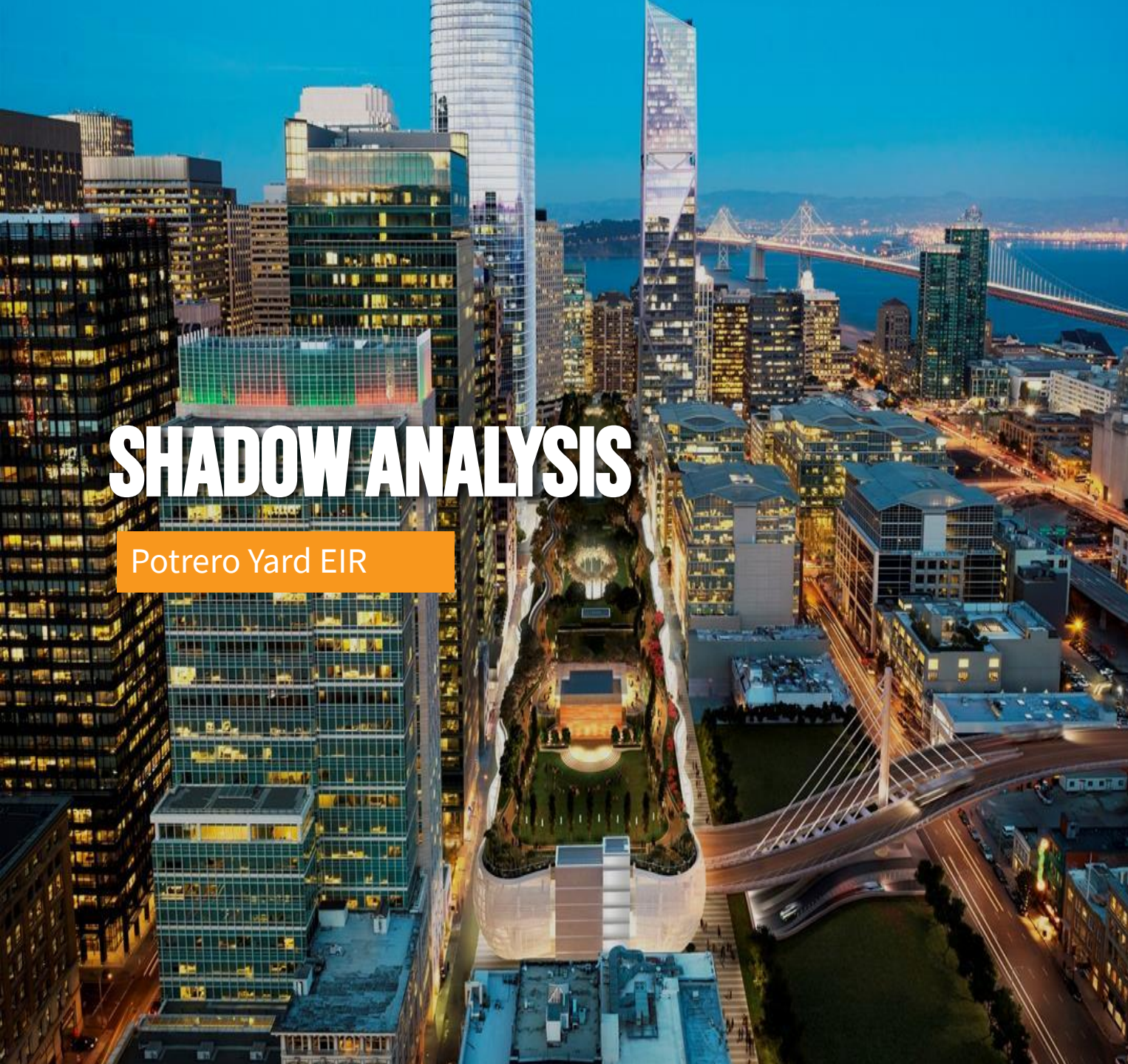


# HOW TO BE INVOLVED

- Provide input during project planning phase
- Apply as an artist for project opportunities, and attend application workshops
- Participate on artist review panel/orientation with artist
- Provide feedback on artists' proposals
- Attend panel and committee meetings that are open to the public

# Shadow Study Presentation

- Laura Lynch, SF Planning
- Kristina Phung, SF Planning
- Chris Townes, SF Rec and Park



# SHADOW ANALYSIS

Potrero Yard EIR



**San Francisco**  
**Planning**

**Laura Lynch –  
Environmental  
Coordinator**

**Kristina Phung – Deputy  
Environmental  
Coordinator**

April 5, 2021

# Intent of California Environmental Quality Act

## Objectives & Purpose of CEQA:

- **Disclose** to decision-makers and the general public the potentially **significant effects** of proposed activities on the **physical** environment
- Avoid or reduce environmental damage
- Enhance **public participation**



## Completion of CEQA review:

- Does not equate to approval of a Project; however, CEQA must be complete for a Project to be approved



## Overview – Potrero Yard Shadow

Most Comprehensive Level of CEQA Analysis - Environmental Impact Report

Pursuant to Section 295 of the Planning Code the project requires a consultant prepared shadow study.

Projects at least 40 feet in height with the potential to shadow Rec Park facilities.

Resources available on the Planning Department website for further information on shadow screening steps:

[Shadow Analysis Procedures and Scope Requirements Memo](#)

# Potrero Yard Shadow Analysis Report

## 1. Quantitative Analysis

- Technical analysis of the amount of new shadow.
- Amount of shadow, duration, when it will occur (time of day and year) and how large of an area.

## 2. Qualitative Analysis

- Includes existing conditions, activities, amenities, and uses of park.
- User surveys to understand when, where, and how areas of the park are used.

## 3. Cumulative Analysis

Considers proposed projects in the vicinity of project site and how those shadows combined with the project would affect Franklin Square.



# CEQA Determination

## CEQA Significance Criterion:

Would the project create new shadow that substantially and adversely affects the use and enjoyment of publicly accessible open space?

### Considerations?

- Shadow Analysis Report
- Qualitative and Quantitative Information

### CEQA IMPACT LEVELS

- No impact
- Less than significant
- Significant and unavoidable







## Non-CEQA Shadow Review

- Separate from CEQA shadow analysis, additional review may be conducted pursuant to Section 295 of the Planning Code.
- This analysis is conducted by both the Current Planning Division and Recreation and Parks Department during the project entitlement process



**San Francisco  
Planning**

THANK  
YOU

**Laura Lynch, Senior Planner  
Potrero Yard EIR  
Environmental Coordinator**

[Laura.lynch@sfgov.org](mailto:Laura.lynch@sfgov.org)

**Kristina Phung, Planner  
Potrero Yard EIR Deputy  
Environmental Coordinator**

[Kristina.phung@sfgov.org](mailto:Kristina.phung@sfgov.org)

San Francisco Planning  
[www.sfplanning.org](http://www.sfplanning.org)

# QUALITATIVE CRITERIA GUIDANCE FROM 1989 MEMO

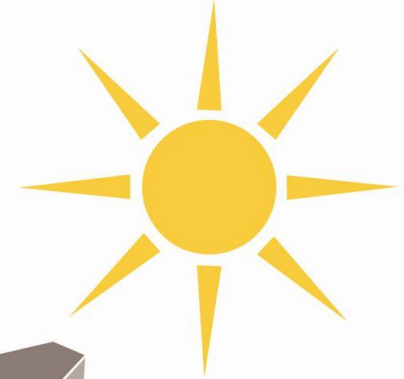
## ROLE OF THE REC & PARK COMMISSION:

Provide guidance to the Planning Commission on shadow impacts to parks under Rec and Park jurisdiction using the qualitative and quantitative guidance.

### VALUE OF THE SUNLIGHT

**TIME OF DAY**  
Existing shadow conditions and location of park within park compared to conditions of proposed project

**TIME OF YEAR**  
Identify time of year for new shadow

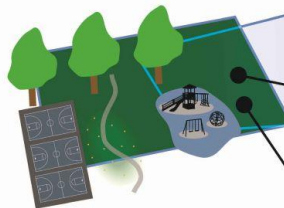


### BUILDING CHARACTERISTICS

#### PUBLIC GOOD SERVED BY SHADOW CASTER

Buildings in the public interest in terms of a needed use or building design and urban form may be allocated a larger portion of the ACL than other buildings.

### SHADOW CHARACTERISTICS



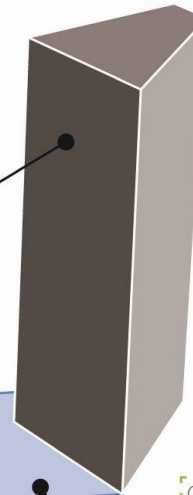
*Farther shadows move faster.*

**SIZE OF SHADOW**  
Small shadows will generally be preferred to large shadows.

**LOCATION OF SHADOW**  
Efforts should be made to avoid shadows in areas of the park where existing or future use of the park is intense and where a new shadow could have detrimental effects on park vegetation.

*Closer shadows move slower.*

**DURATION OF SHADOW**  
Shadows lasting a short period of time will be preferred to shadows which last a long time.



# Next Steps

- Next meeting on May 4
- RFP Overview
- Muni Metro East Update

# Public Comment

- Do any members of the public wish to comment?
- Reminder – we cannot address any questions regarding the procurement process at this time. Please direct your questions and comments to San Francisco Public Works and on SFBid.

# Please Reach Out Anytime

- Send us your questions.
- Suggest additional Working Group members to fill our vacant seats.
- Request a video conference meeting or call.
- Our “doors” are always open to you.

## **Bonnie Jean von Krogh**

Building Progress Public Affairs Manager

[BonnieJean.vonKrogh@sfmta.com](mailto:BonnieJean.vonKrogh@sfmta.com)

415.646.2447

## **Licinia Iberri**

Campus Planning Manager

[Licinia.Iberri@sfmta.com](mailto:Licinia.Iberri@sfmta.com)

415.646.2715

## **Benjamin Barnett**

Public Relations Officer

[Benjamin.Barnett@sfmta.com](mailto:Benjamin.Barnett@sfmta.com)

415.646.2567

## **Rafe Rabalais**

Long-Range Asset Development Manager

[Rafe.Rabalais@sfmta.com](mailto:Rafe.Rabalais@sfmta.com)

415.646.2764

## **Jesse Schofield**

Transportation Planner

[Jesse.Schofield@sfmta.com](mailto:Jesse.Schofield@sfmta.com)

415.646.2634