



SFMTA

# December 4, 2020 Engineering Public Hearing

<https://meet.sfmta.com/meetings/ZN6KJBHY>

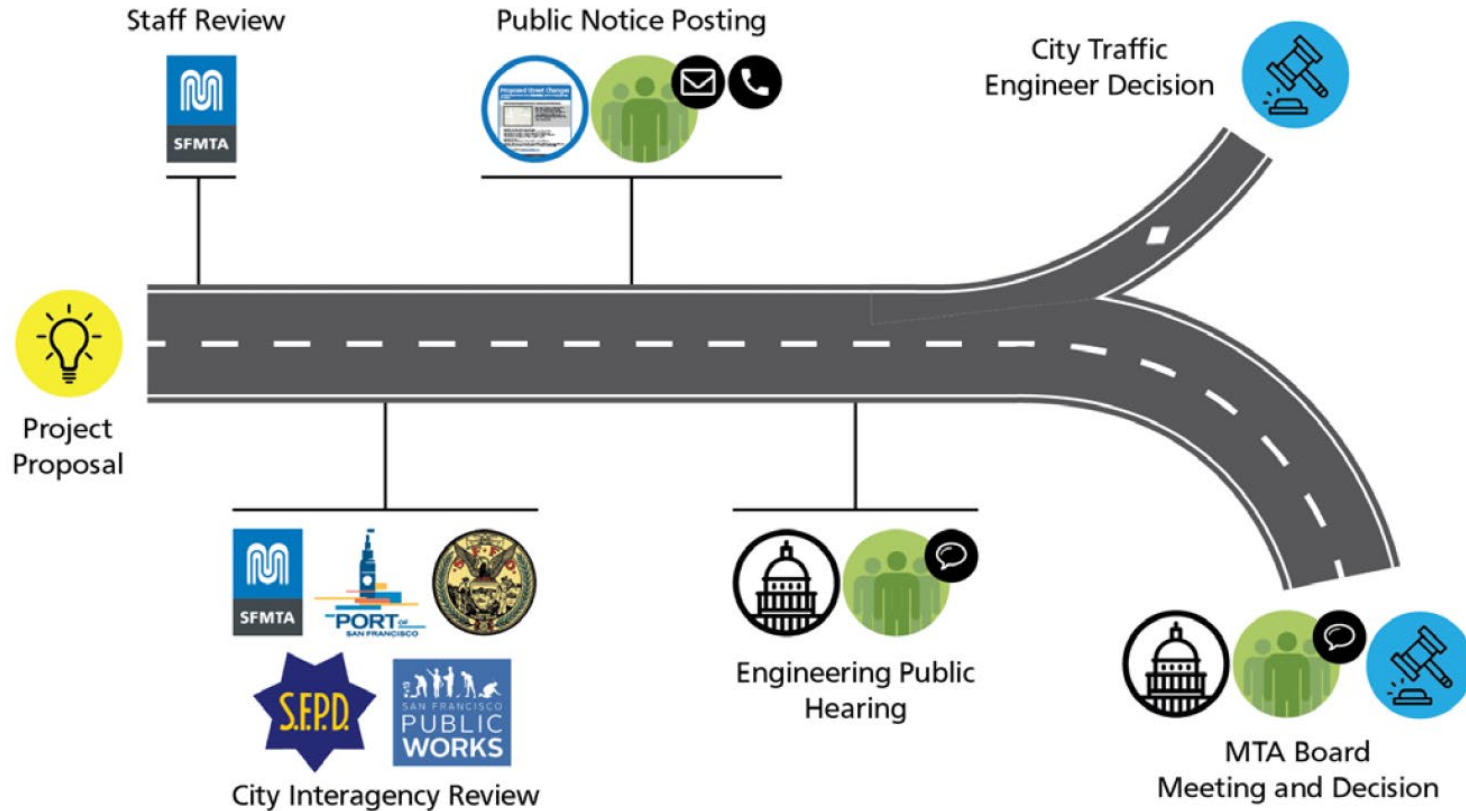
Conference Line: 888-251-2909

Participation Code: 4584731

[SFMTA.com/ENGSpeakerCard](https://sfmta.com/ENGSpeakerCard)

# Proposed Street Changes

How does a proposed street change get approved?



<https://www.sfmta.com/committees/engineering-public-hearings>

# Public Hearing Decision Posting

Results will be posted by  
5 PM next Friday

<https://www.sfmta.com/calendar/engineering-public-hearing-meeting-december-4-2020>

## Referenced Materials

Engineering Public Hearing Agenda, July 17, 2020

 [Engineering Public Hearing Agenda, July 17, 2020](#)

Engineering Public Hearing Results, July 17, 2020

 [Engineering Public Hearing Results, July 17, 2020](#)





SFMTA

# December 4, 2020 Engineering Public Hearing

<https://meet.sfmta.com/meetings/ZN6KJBHY>

Conference Line: 888-251-2909

Participation Code: 4584731

[SFMTA.com/ENGSpeakerCard](https://sfmta.com/ENGSpeakerCard)

**1. RESCIND – NO LEFT TURNS, 3 PM TO 6 PM, MONDAY THROUGH FRIDAY  
ESTABLISH - NO LEFT TURNS**

**Northbound San Jose Avenue at 29th Street ♦**

**Southbound San Jose Avenue at 29th Street ♦**

**(Supervisor District 8) Alvin Lam, [alvin.lam@sfmta.com](mailto:alvin.lam@sfmta.com)**



Conference Line: 1- 888-251-2909 (use participation code: 4584731)

To comment on an item, press "1" and then "0" when prompted.

## 2. ESTABLISH – RED ZONE

Topeka Avenue, west side, from Apollo Street to 20 feet northerly ♦  
Apollo Street, south side, from Topeka Avenue west property line to 25 feet easterly  
(25 feet of red curb around the southwest corner) ♦  
(Supervisor District 10) Hester Yu [hester.yu@sfmta.com](mailto:hester.yu@sfmta.com)



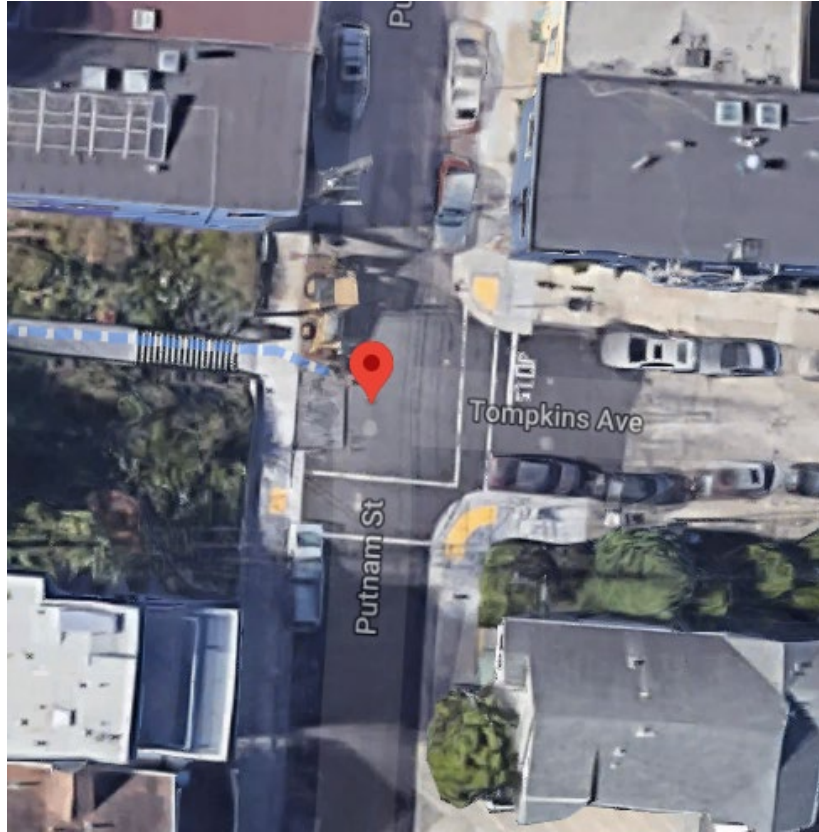
Conference Line: 1- 888-251-2909 (use participation code: 4584731)

To comment on an item, press "1" and then "0" when prompted.



### 3. ESTABLISH - STOP SIGNS

Putnam Street, northbound and southbound, at Tompkins Avenue making this T-intersection an all-way STOP ♦ (Supervisor District 9) Jeffrey Tom, [jeffrey.tom@sfmta.com](mailto:jeffrey.tom@sfmta.com)



Conference Line: 1- 888-251-2909 (use participation code: 4584731)

To comment on an item, press "1" and then "0" when prompted.

#### 4. ESTABLISH – STOP SIGN

Brunswick Street, eastbound and westbound, at Curtis Street, making this intersection an all-way STOP ♦ (Supervisor District 11) [Amy Chun, amy.chun@sfmta.com](mailto:amy.chun@sfmta.com)



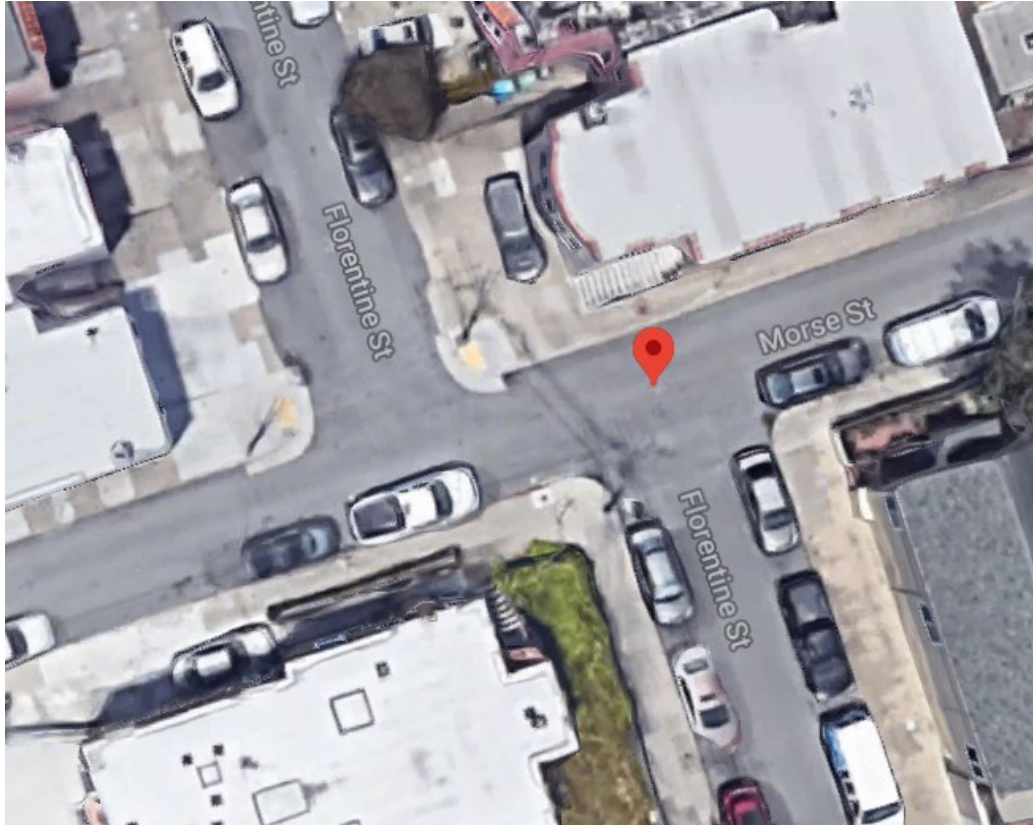
Conference Line: 1- 888-251-2909 (use participation code: 4584731)

To comment on an item, press "1" and then "0" when prompted.



## 5. ESTABLISH – STOP SIGN

Florentine Street, southbound, at Morse Street, stopping the southbound approach of the intersection ♦ (Supervisor District 11) Amy Chun, [amy.chun@sfmta.com](mailto:amy.chun@sfmta.com)

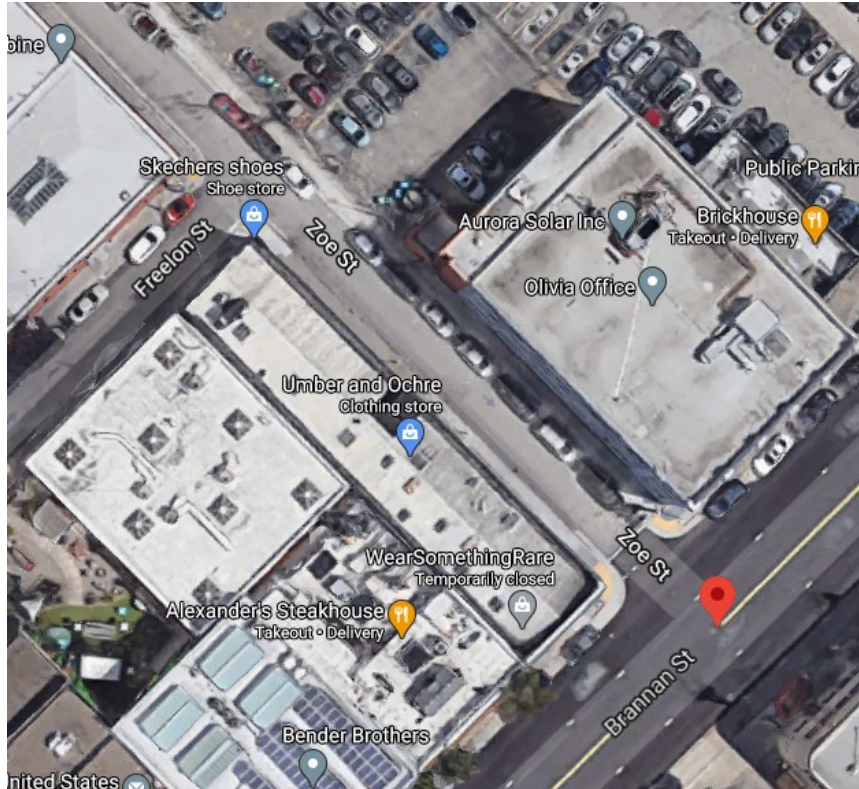


Conference Line: 1- 888-251-2909 (use participation code: 4584731)

To comment on an item, press "1" and then "0" when prompted.

## 6. ESTABLISH – STOP SIGN

Freelon Street, eastbound, at Zoe Street, stopping the stem of this T-intersection ◆  
Zoe Street, southbound, at Brannan Street, stopping the stem of this T-intersection ◆  
(Supervisor District 6) Amy Chun, [amy.chun@sfmta.com](mailto:amy.chun@sfmta.com)

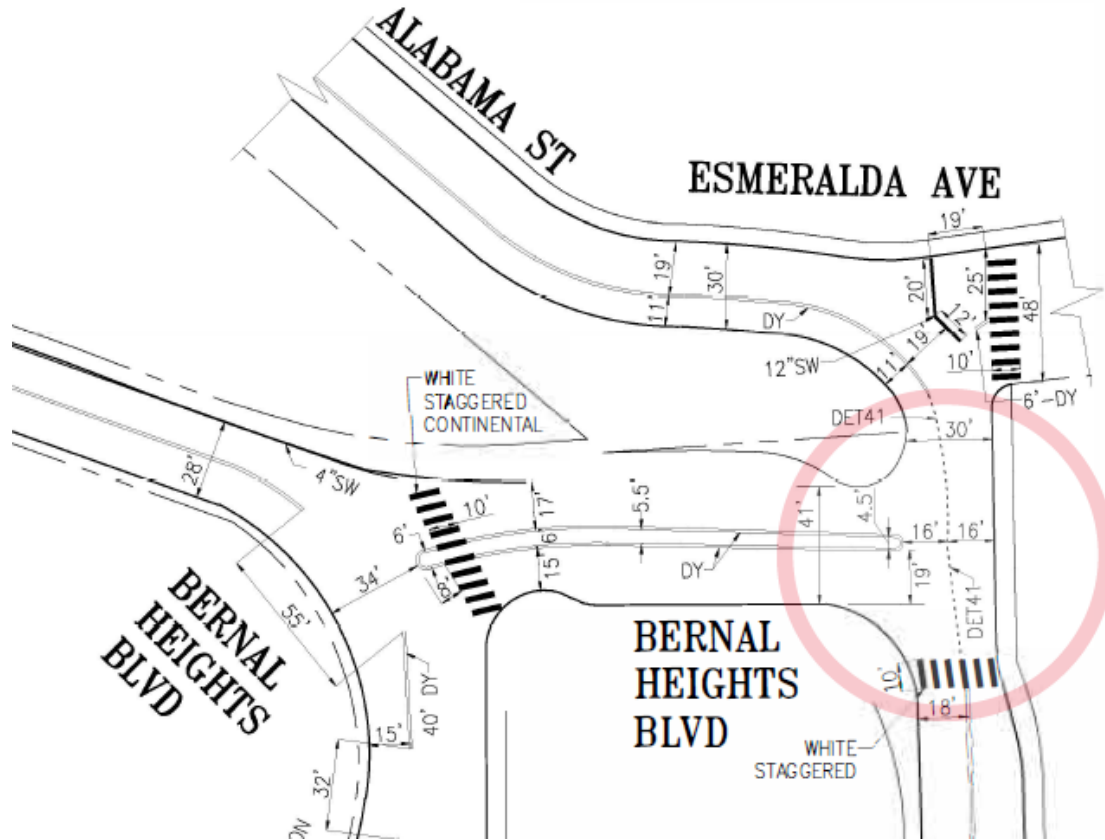


Conference Line: 1- 888-251-2909 (use participation code: 4584731)

To comment on an item, press "1" and then "0" when prompted.

## 7. ESTABLISH - STOP SIGN

Bradford Street, southbound, at Bernal Heights Boulevard, making this T-intersection an all-way STOP ♦ (Supervisor District 9) Edgar Orozco, [edgar.orozco@sfmta.com](mailto:edgar.orozco@sfmta.com)

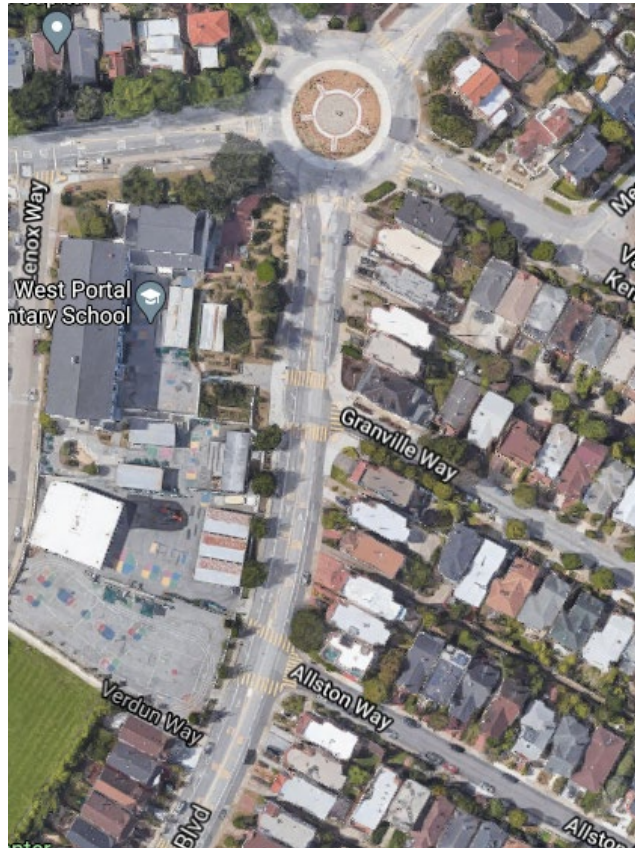


Conference Line: 1- 888-251-2909 (use participation code: 4584731)

To comment on an item, press "1" and then "0" when prompted.

## 8. ESTABLISH – SPEED CUSHIONS

Claremont Boulevard, between Ulloa Street and Allston Way (Two 5-lump speed cushions) ◆ (District Supervisor 7) Nick Carr, [Nick.Carr@sfmta.com](mailto:Nick.Carr@sfmta.com)



Conference Line: 1- 888-251-2909 (use participation code: 4584731)


To comment on an item, press "1" and then "0" when prompted.



## 9. ESTABLISH – SPEED CUSHIONS

Yerba Buena Avenue, between Santa Clara Avenue and Maywood Street (Three 3-Lump Cushions) (Supervisor District 7) ♦ Nick Carr, [Nick.Carr@sfmta.com](mailto:Nick.Carr@sfmta.com)

SPEED HUMP FIELD WORKSHEET

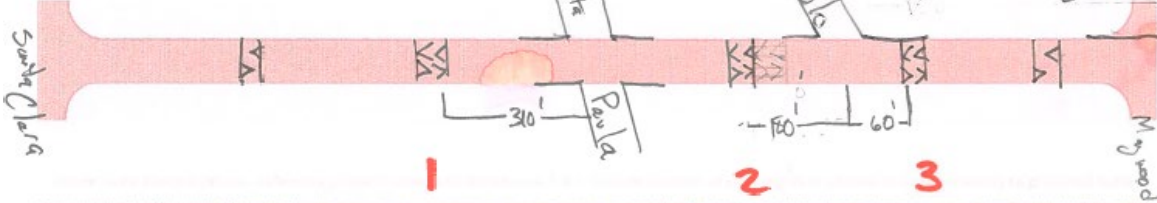


Street Name:  
 Yerba Buena Av

Roadway Width:  
 27'  
 Block Length:  
 360 - 910'  
(Distance between intersection nodes)

Cross Street 1:  
 Santa Clara

Cross Street 2:  
 Maywood



	Device Hump/ Cushion/ Name	Location A – Preferred				Location B – Alternate			
		Reference Line Route #s adjacent to Nearest Property Line	Direction Hump is located N/S/E/W of the reference line	Dimension 1 # feet between edge of hump and reference line	Dimension 2 # feet (approx.) from hump to intersection	Reference Line Route #s adjacent to Nearest Property Line	Direction Hump is located N/S/E/W of the reference line	Dimension 1 # feet between edge of hump and reference line	Dimension 2 # feet (approx.) from hump to intersection
Speed Hump 1	3L	66/70	E	0'	310' W of Sta Paula				
Speed Hump 2	3L	125/73 <del>198 Sta Paula</del>	E	10'	170' W of Sta Paula				
Speed Hump 3	3L	154/152	W	0'	60' E of Sta Paula				

Other Comments: 3L CUSHIONS

Surveyors:  
NC  
Date: 8-24-20

Conference Line: 1- 888-251-2909 (use participation code: 4584731)

To comment on an item, press "1" and then "0" when prompted.



**10(a). ESTABLISH – CLASS IV BIKEWAY**

Evans Avenue, south side, from Keith Street to Jennings Street ◆

Evan Avenue, both directions, from Jennings Street to Hunters Pt. Boulevard ◆

Hunters Point Boulevard, both directions, from Evans Avenue to Innes Street ◆

**10(b). ESTABLISH – RAISED CROSSWALK**

Hunters Point Boulevard at Hawes Street (South crosswalk) ◆

Hunters Point Boulevard at Innes Avenue (North crosswalk) ◆

Innes Avenue at Hunters Point Boulevard (West crosswalk) ◆

**10(c). ESTABLISH – TRANSIT BOARDING ISLAND**

Evans Avenue, south side, from 7 feet to 52 feet west of Jennings Street ◆

**10(d). ESTABLISH – LEFT LANE MUST TURN LEFT**

Evans Avenue, easterly, at Jennings Street (Supervisor District 10) ◆ Jonathan Chimento,  
Jonathan.Chimento@sfmta.com

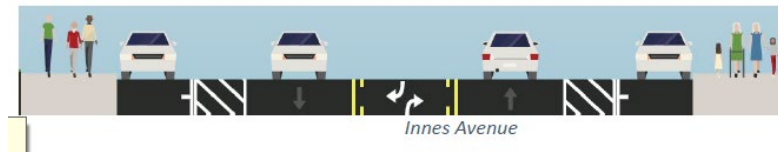
**PROJECT AREA MAP**



**PROPOSED STREET CROSS-SECTIONS**



*Hunters Point Boulevard*



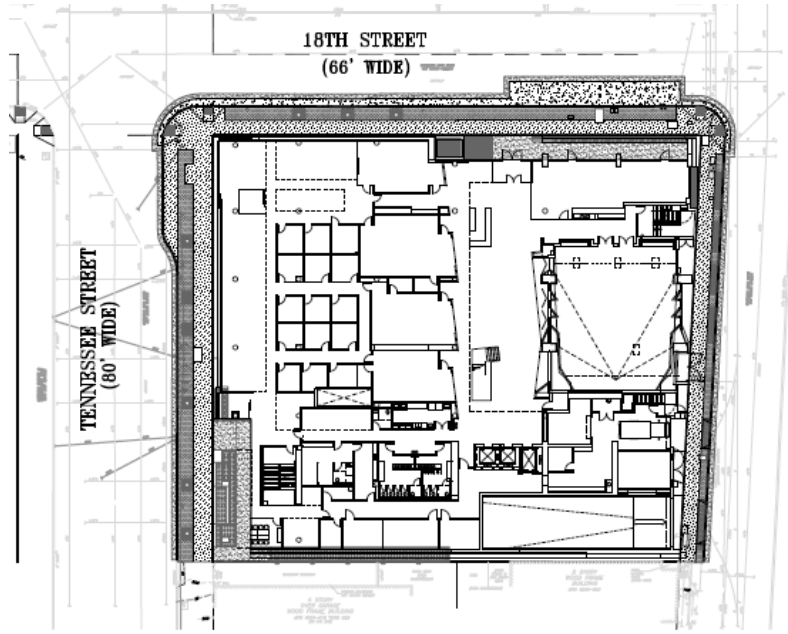
*Innes Avenue*

Conference Line: 1- 888-251-2909 (use participation code: 4584731)

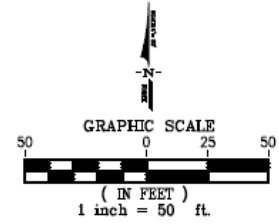
To comment on an item, press "1" and then "0" when prompted.

**11. ESTABLISH – TOW-AWAY, NO STOPPING ANYTIME  
ESTABLISH – SIDEWALK EXTENSION (6 FEET)**

Tennessee Street - east side, from 18th Street to 58 feet southerly (sidewalk widening for 58 foot bulbout) (Supervisor District 10) Larry Yee, [larry.yee@sfmta.com](mailto:larry.yee@sfmta.com)



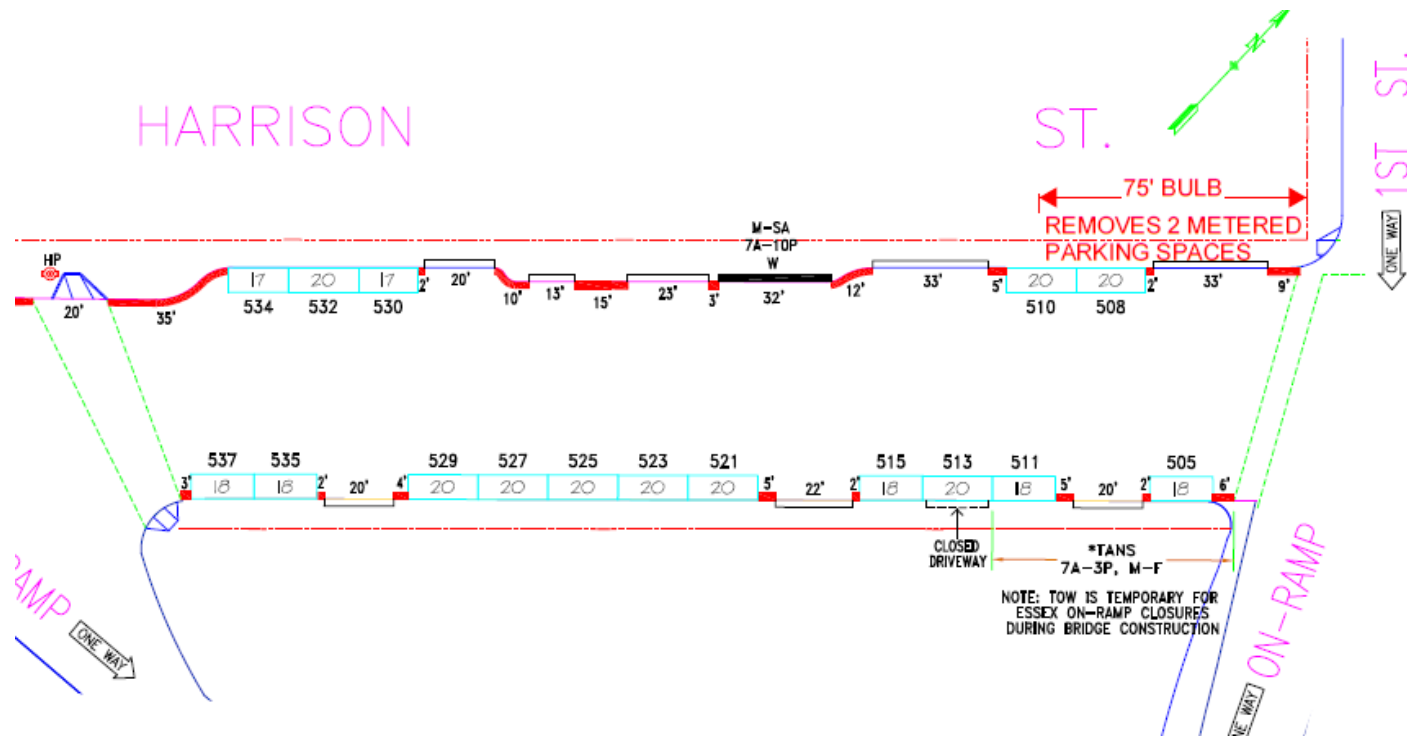
**SITE PLAN**  
SCALE: 1" = 50'



Conference Line: 1- 888-251-2909 (use participation code: 4584731)  
To comment on an item, press "1" and then "0" when prompted.

## 12. ESTABLISH – TOW-AWAY NO STOPPING ANYTIME ESTABLISH – SIDEWALK WIDENING (6 FEET)

Harrison Street, north side, from 1<sup>st</sup> Street to 75 feet westerly (sidewalk widening for 6-foot wide bulb, removes 2 metered parking spaces #508 and #510) (Supervisor District 6)  
Westley Myles, [Westley.Myles@sfmta.com](mailto:Westley.Myles@sfmta.com)



Conference Line: 1- 888-251-2909 (use participation code: 4584731)

To comment on an item, press "1" and then "0" when prompted.

### 13. ESTABLISH – NO LEFT TURN

16th Street, eastbound, at Market Street/Noe Street ◆

Noe Street, northbound and southbound, at Market Street/16th Street ◆

Sanchez Street, northbound and southbound, at Market Street/15th Street ◆

(Supervisor District 8) Gabriel Ho, [gabriel.ho@sfmta.com](mailto:gabriel.ho@sfmta.com)



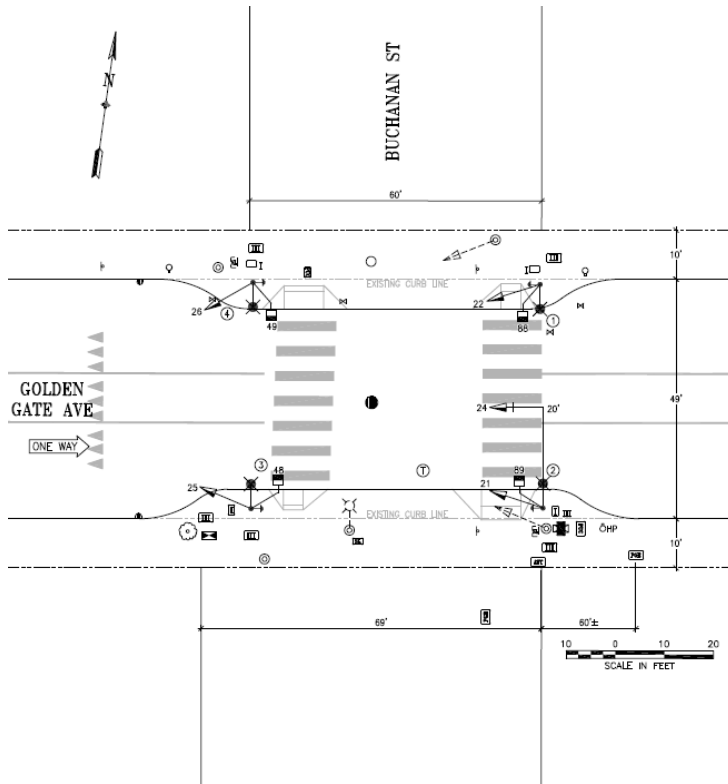
Conference Line: 1- 888-251-2909 (use participation code: 4584731)

To comment on an item, press "1" and then "0" when prompted.

# 14. ESTABLISH – TRAFFIC SIGNAL

## Buchanan Street and Golden Gate Avenue ♦

(Supervisor District 5) Eric Luu, [eric.luu@sfmta.com](mailto:eric.luu@sfmta.com)



Conference Line: 1- 888-251-2909 (use participation code: 4584731)

To comment on an item, press "1" and then "0" when prompted.



15(a). RESCIND – STOP SIGN

Laguna Street, southbound, at Hermann Street ◆

Hermann Street, eastbound, at Laguna Street ◆

15(b). ESTABLISH – TRAFFIC SIGNAL

Laguna Street and Hermann Street (to be integrated with Laguna/Market/Guerrero signal) ◆

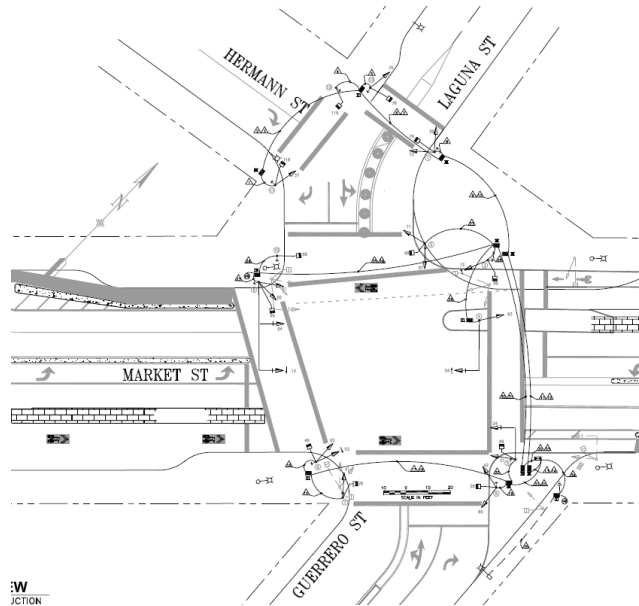
15(c). ESTABLISH – NO RIGHT TURN ON RED

Laguna Street, southbound, at Market Street ◆

Laguna Street, southbound, at Hermann Street ◆

Hermann Street, eastbound, at Laguna Street ◆

(Supervisor District 8) Gabriel Ho, [gabriel.ho@sfmta.com](mailto:gabriel.ho@sfmta.com)



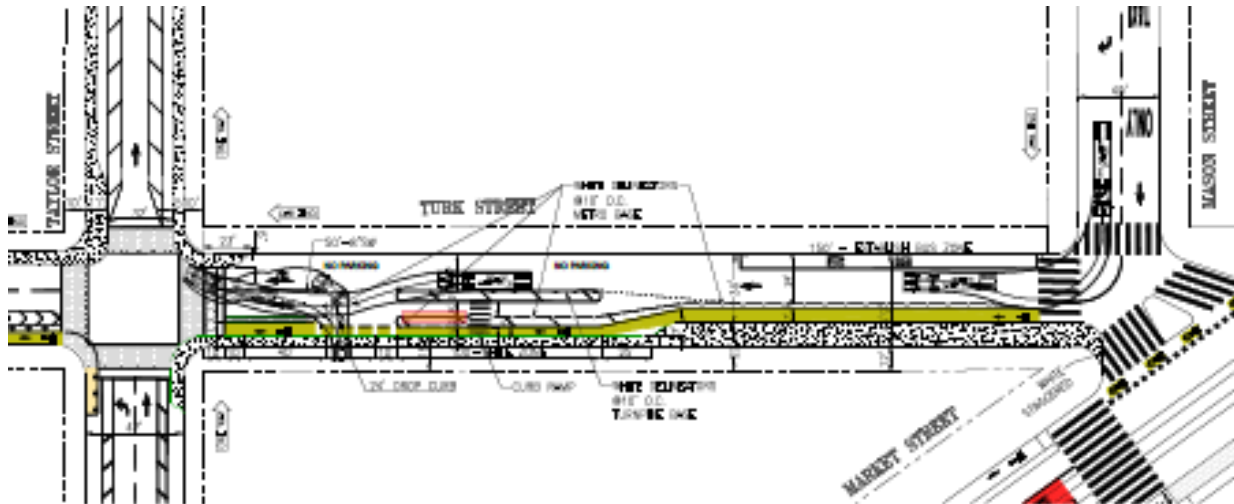
Conference Line: 1- 888-251-2909 (use participation code: 4584731)

To comment on an item, press "1" and then "0" when prompted.

16(a). ESTABLISH – PASSENGER LOADING ZONE, AT ALL TIMES  
Turk Street, south side, from 94 feet to 194 feet east of Taylor Street ♦

16(b). ESTABLISH – BUS STOP  
Turk Street, north side, from Mason Street to 150 feet westerly  
(shifts existing midblock bus zone by 100 feet)

16(c). RESCIND – BUS STOP  
Turk Street, north side, from 115 feet to 240 feet west of Mason Street  
(Supervisor District 6) Pallavi Panyam, Pallavi.panyam@sfmta.com



Conference Line: 1- 888-251-2909 (use participation code: 4584731)

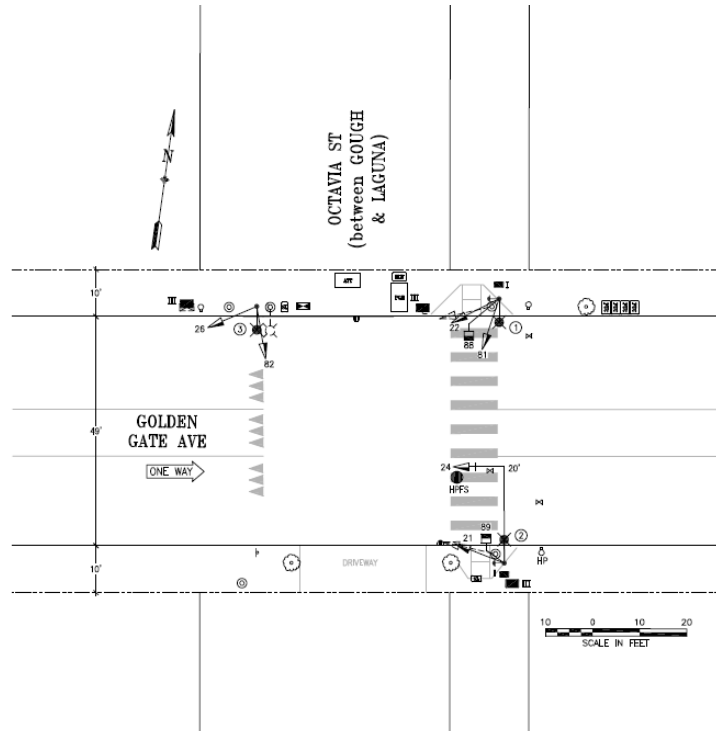
To comment on an item, press "1" and then "0" when prompted.

**17(a). ESTABLISH – TRAFFIC SIGNAL**

**Golden Gate Avenue, mid-block between Gough Street and Laguna Street (at Octavia Street) ♦**

**17(b). ESTABLISH – NO PARKING ANY TIME**

**Golden Gate Avenue, north side and south side, from 430 feet to 470 feet east of Laguna Street (fronting Octavia Street) (Supervisor District 6) Eric Luu, [eric.luu@sfmta.com](mailto:eric.luu@sfmta.com)**  
**.com**



Conference Line: 1- 888-251-2909 (use participation code: 4584731)

To comment on an item, press "1" and then "0" when prompted.

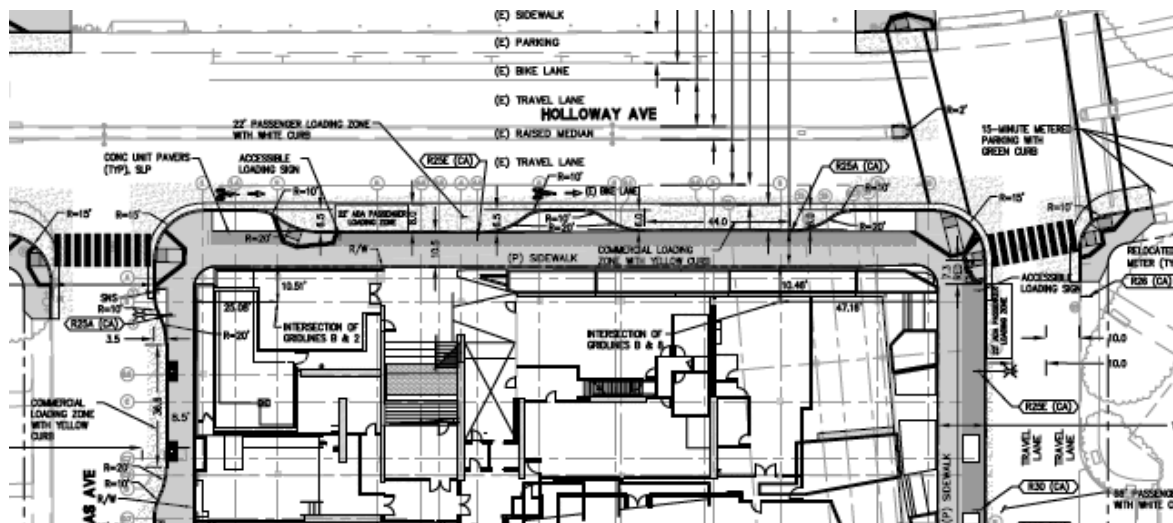
**18(a). ESTABLISH – RED ZONE  
ESTABLISH – SIDEWALK WIDENING**

**Holloway Avenue – south side, Cardenas Avenue to 35 feet easterly, (sidewalk widening for 6.5-foot wide bulb, removes 2 parking spaces)**

**Holloway Avenue – south side, from 84 feet to 133 feet east of Cardenas Avenue, (sidewalk widening for 6-foot wide bulb, removes 3 parking spaces)**

**Holloway Avenue – south side, Varela Avenue to 45 feet westerly, (sidewalk widening for 6-foot wide bulb, removes 2 parking spaces)**

**Cardenas Avenue – east side, Holloway Avenue to 24 feet southerly, (sidewalk widening for 3.50-foot wide bulb) (Supervisor District 7) Westley Myles, [westley.myles@sfmta.com](mailto:westley.myles@sfmta.com)**

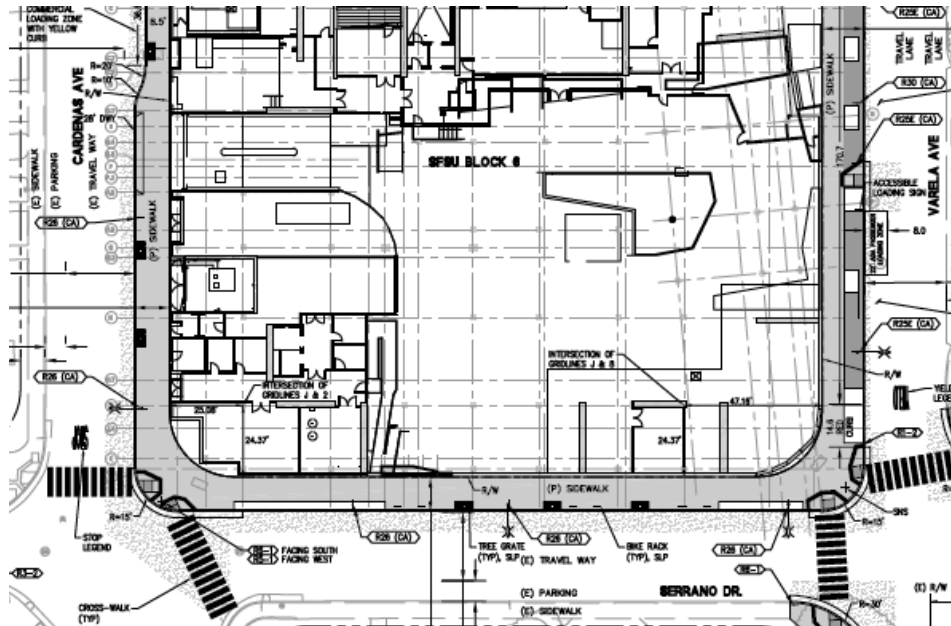


Conference Line: 1- 888-251-2909 (use participation code: 4584731)

To comment on an item, press "1" and then "0" when prompted.

**18(b). ESTABLISH – TOW-AWAY, NO STOPPING ANYTIME  
ESTABLISH – SIDEWALK WIDENING**

**Cardenas Avenue – east side, from 60 feet to 199 feet southerly,  
(sidewalk widening for 3.50-foot wide bulb, removes 6 parking spaces)  
Serrano Drive – north side, from Varela Avenue to Cardenas Avenue,  
(sidewalk widened from 6 feet to 12 feet, removes 9 parking spaces)  
(Supervisor District 7) Westley Myles, [westley.myles@sfmta.com](mailto:westley.myles@sfmta.com)**



Conference Line: 1- 888-251-2909 (use participation code: 4584731)  
To comment on an item, press "1" and then "0" when prompted.



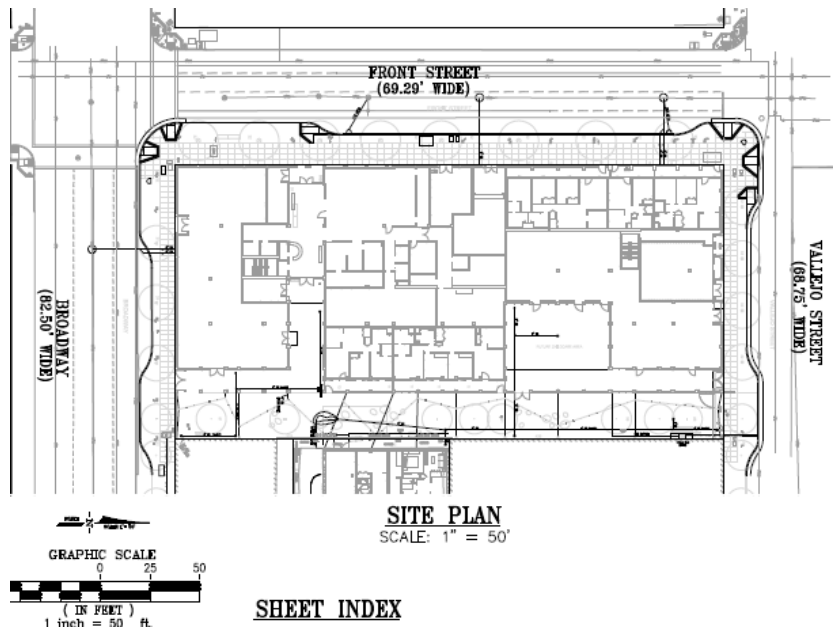
**19(a). ESTABLISH – TOW AWAY NO STOPPING ANYTIME  
ESTABLISH – SIDEWALK WIDENING**

**Front Street – east side, Broadway Street to 82 feet northerly, (sidewalk widening for 6-foot wide bulb, removes 3 metered parking spaces #804, #806, #808)**

**Broadway Street – north side, from 82 feet to 157 feet east of Front Street, (sidewalk widening for 6-foot wide bulb, removes 4 metered parking spaces #64, #66, #68, #70)**

**Vallejo Street – south side, from 102 feet to 170 feet east of Front Street, (sidewalk widening for 6-foot wide bulb, removes 3 metered parking spaces #67, #69, #71)**

**(Supervisor District 3) Westley Myles; [Westley.Myles@sfmta.com](mailto:Westley.Myles@sfmta.com)**



Conference Line: 1- 888-251-2909 (use participation code: 4584731)

To comment on an item, press "1" and then "0" when prompted.

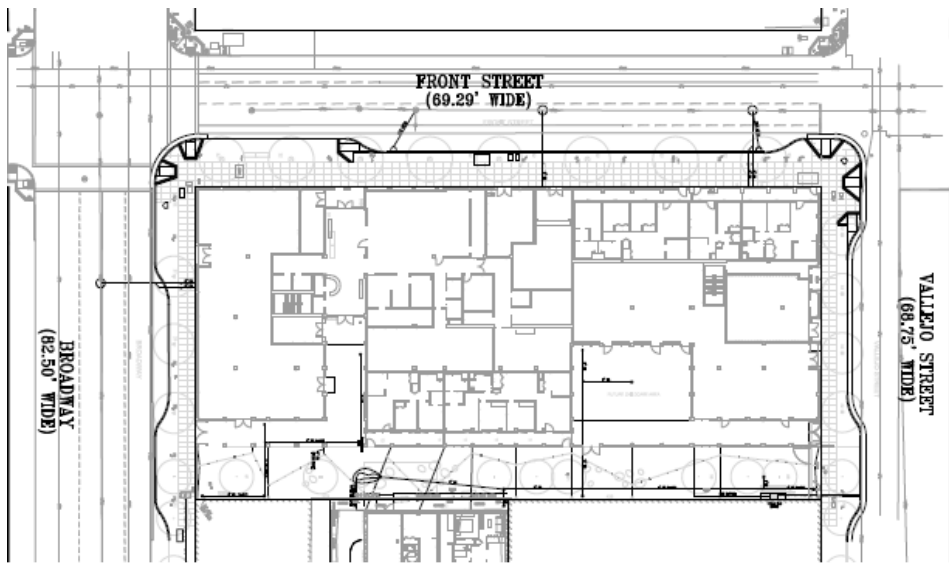
**19(b). ESTABLISH - RED ZONE  
ESTABLISH – SIDEWALK WIDENING**

Front Street – east side, Vallejo Street to 32 feet southerly, (sidewalk widening for 6-foot wide bulb, removes 4 metered motorcycle spaces #850, #852, #854, #856 and 1 metered parking space #826)

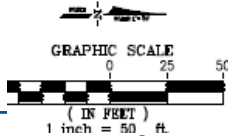
Vallejo Street – south side, Front Street to 43 feet easterly, (sidewalk widening for 6-foot wide bulb, removes 2 metered parking spaces #85 and #87)

Broadway Street – north side, Front St to 41 feet easterly, (sidewalk widening for 6-foot wide bulb, removes 2 metered parking spaces #76 and #78)

(Supervisor District 3) Westley Myles; [Westley.Myles@sfmta.com](mailto:Westley.Myles@sfmta.com)



**SITE PLAN**  
SCALE: 1" = 50'



**SHEET INDEX**

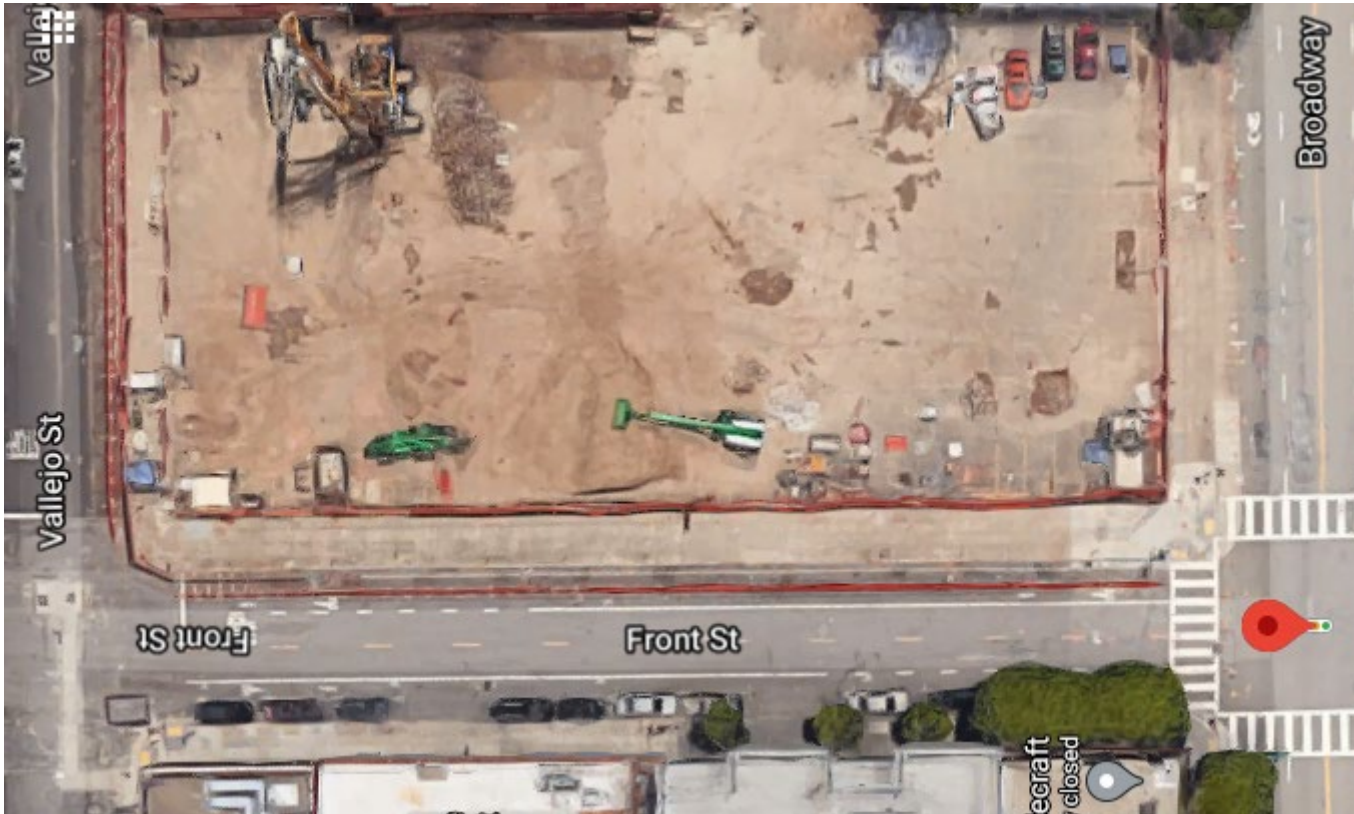
Conference Line: 1- 888-251-2909 (use participation code: 4584731)

To comment on an item, press "1" and then "0" when prompted.

**19(c). RESCIND – CLASS II BIKEWAY (BIKE LANE)**

**Front Street – northbound, eastside, between Broadway Street and Vallejo Street (Existing substandard width bike lane replaced with sharrows)**

**(Supervisor District 3) Westley Myles; [Westley.Myles@sfmta.com](mailto:Westley.Myles@sfmta.com)**



Conference Line: 1- 888-251-2909 (use participation code: 4584731)

To comment on an item, press "1" and then "0" when prompted.

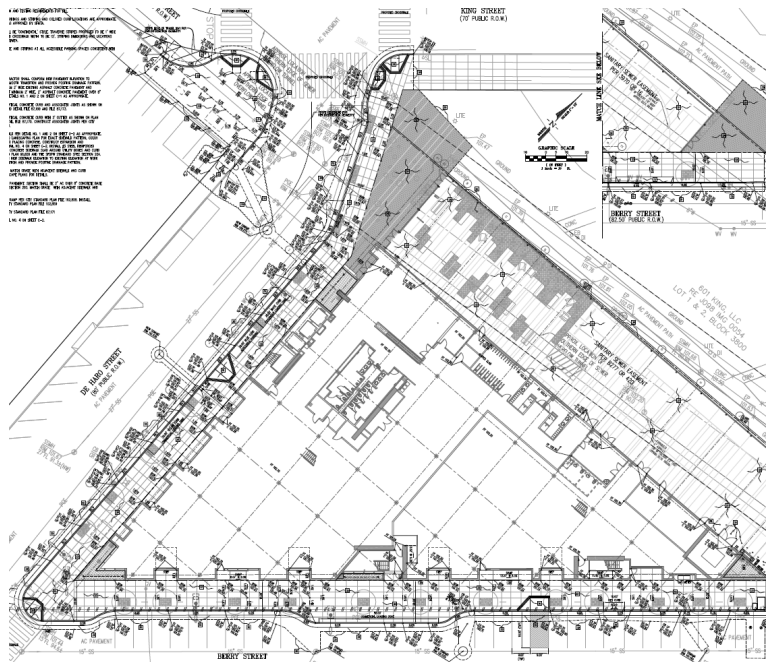
**20(a). ESTABLISH – RED ZONE  
ESTABLISH – SIDEWALK WIDENING**

**Berry Street – north side, De Haro Street to 37 feet easterly,  
(sidewalk widening for 6-foot wide bulb)**

**Division Street – south side, Berry St to 55 feet westerly,  
(sidewalk widening for 28-foot wide bulb, removes 1 parking space)**

**20(b). ESTABLISH – PERPENDICULAR PARKING**

**Berry Street – north side, from 37 feet to 117 feet and 212 feet to 433 feet east of De Haro Street  
(Supervisor District 10) [Westley Myles, Westley.Myles@sfmta.com](mailto:Westley.Myles@sfmta.com)**

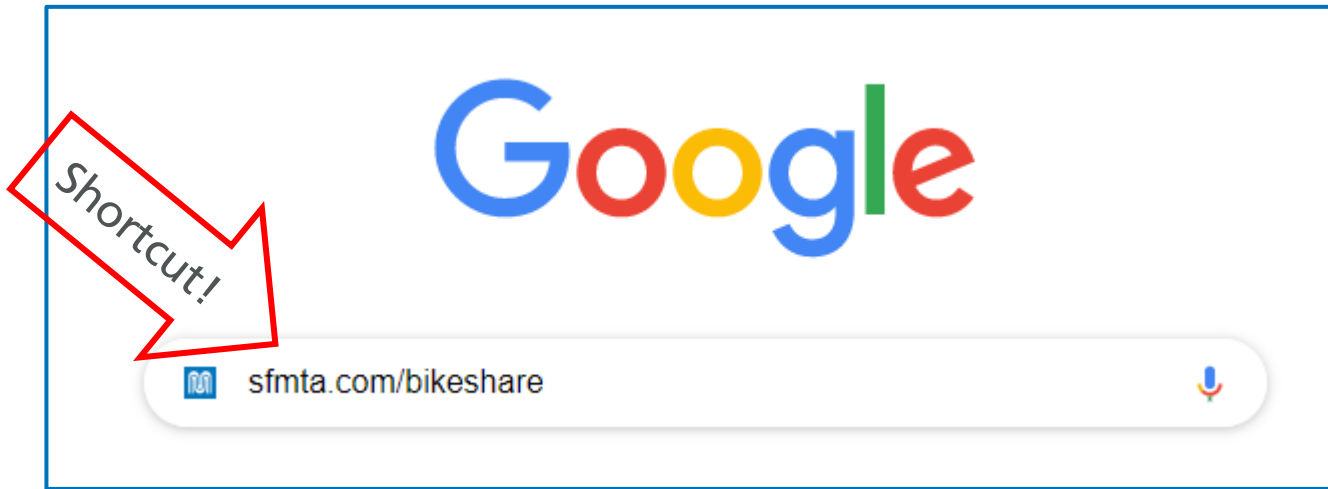


Conference Line: 1- 888-251-2909 (use participation code: 4584731)

To comment on an item, press "1" and then "0" when prompted.



<https://www.sfmta.com/getting-around/bike/bike-share>



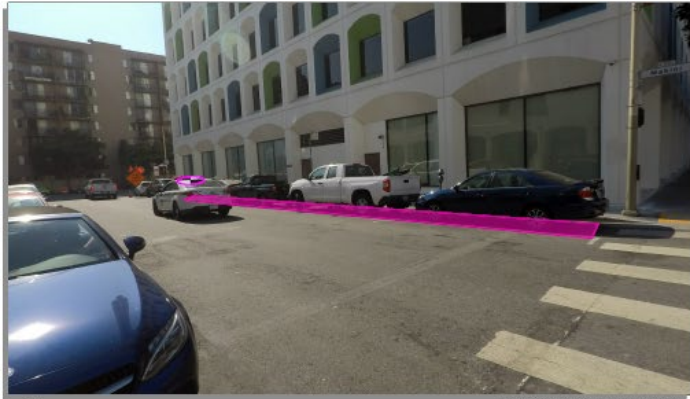
#### Quick Links

[Overview](#) | [Equity](#) | [Bikeshare's Purpose](#) | [System Planning and Station Siting](#) | [Bay Area Bike Share Pilot](#) | [Stationless Bikeshare](#) | [Bikeshare Data](#)



# 21. ESTABLISH – NO STOPPING EXCEPT BICYCLES ESTABLISH – BIKE SHARE STATION

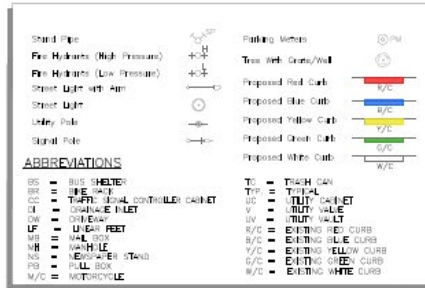
Mabini Street, west side, from 2 feet to 98 feet south of Folsom Street (90-foot station with red zones either side) ♦ (Supervisor District 6) Daniel Carr, [daniel.carr@sfmta.com](mailto:daniel.carr@sfmta.com)



⊕ = PLAN REFERENCE POINT

**SITE LOCATION**  
NOT TO SCALE

Source: GrandView Services, 12/17/2020

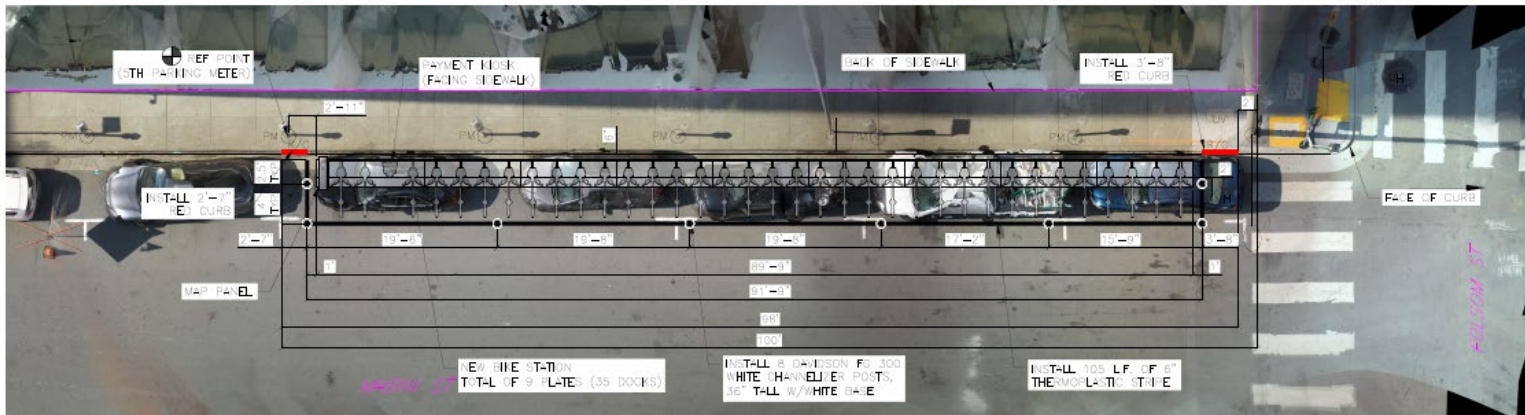


**SITE NOTES**

- ON-STREET STATION
- ADJACENT TO 795 FOLSOM ST
- METERED PARKING



**VICINITY MAP**  
NOT TO SCALE

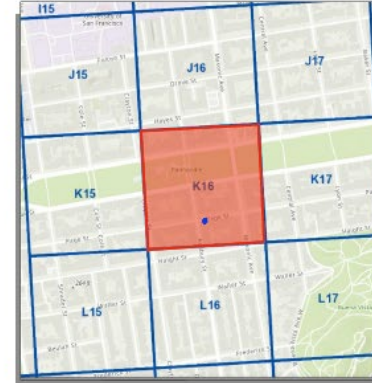


Conference Line: 1- 888-251-2909 (use participation code: 4584731)  
To comment on an item, press "1" and then "0" when prompted.



# 22. ESTABLISH – NO STOPPING EXCEPT BICYCLES ESTABLISH – BIKE SHARE STATION

Page Street, south side, from Masonic Avenue to 90 feet easterly (82-foot station with red zones either side) ♦ (Supervisor District 5) Daniel Carr, [daniel.carr@sfmta.com](mailto:daniel.carr@sfmta.com)



⊕ = PLAN REFERENCE POINT

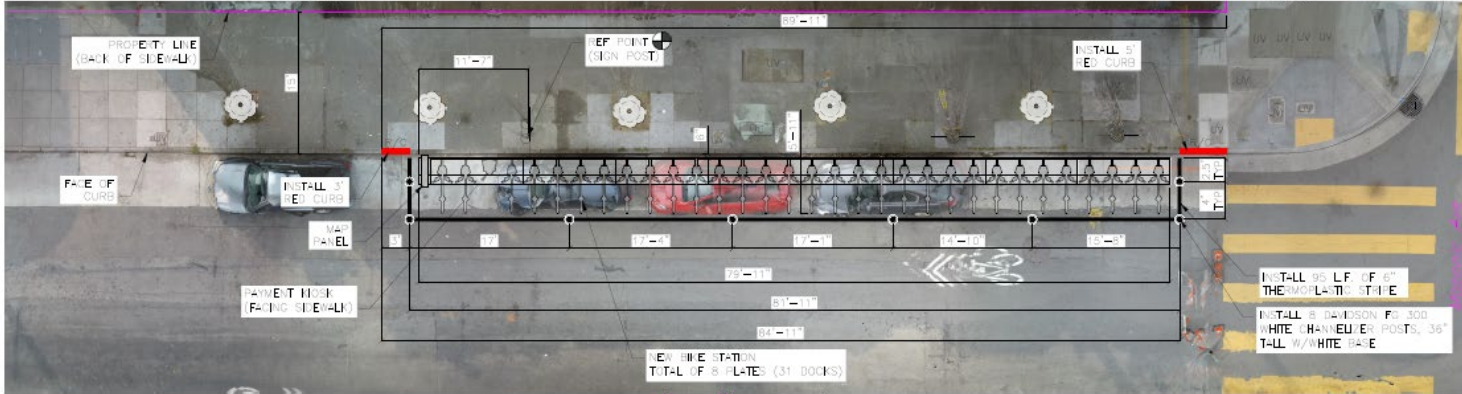
SITE LOCATION  
NOT TO SCALE

Source: Google Maps, SEPT 2020

### SITE NOTES

- ON-STREET SITE
- ADJACENT TO 1100 MASONIC AVE
- UNMETERED PARKING

VICINITY MAP  
NOT TO SCALE



Conference Line: 1- 888-251-2909 (use participation code: 4584731)  
To comment on an item, press "1" and then "0" when prompted.

## 23. ESTABLISH – NO STOPPING EXCEPT BICYCLES ESTABLISH – BIKE SHARE STATION

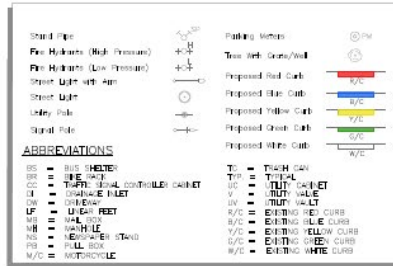
Delancey Street, east side, from 45 feet to 121 feet north of Brannan Street (72-foot station with red zones on the north side of the station) ♦ (Supervisor District 6) Daniel Carr, [daniel.carr@sfmta.com](mailto:daniel.carr@sfmta.com)



⬤ = PLAN REFERENCE POINT

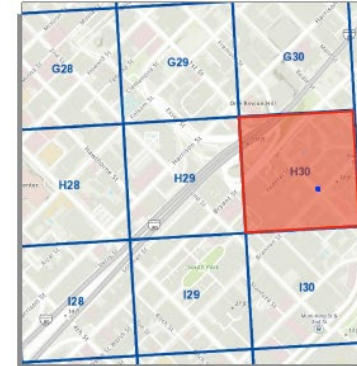
SITE LOCATION  
NOT TO SCALE

Source: GrandView Services, JULY 2020

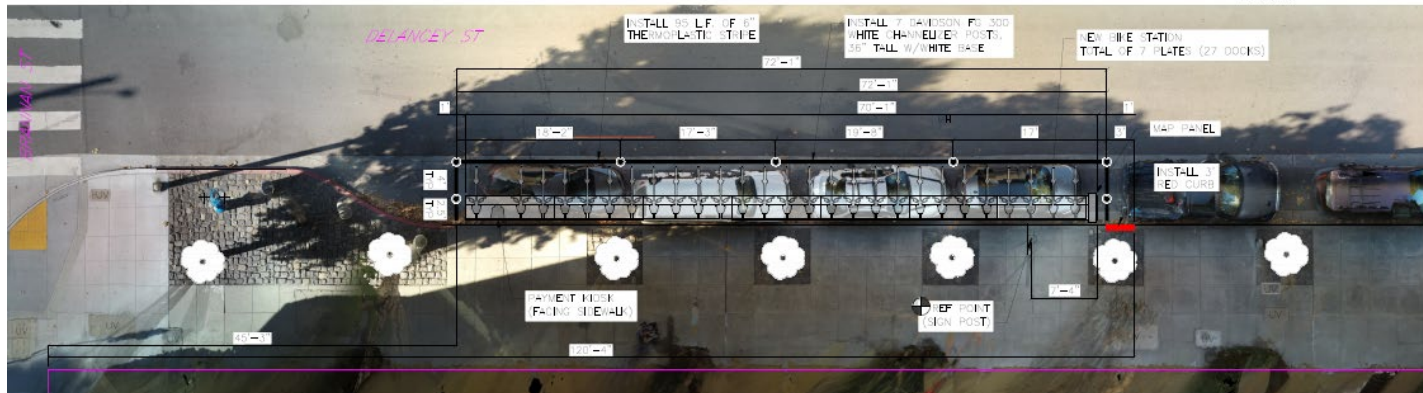


### SITE NOTES

- ON-STREET STATION
- ADJACENT TO 180 BRANNAN ST
- UNMETERED PARKING



VICINITY MAP  
NOT TO SCALE



Conference Line: 1- 888-251-2909 (use participation code: 4584731)

To comment on an item, press "1" and then "0" when prompted.



SFMTA

# December 4, 2020 Engineering Public Hearing

<https://meet.sfmta.com/meetings/ZN6KJBHY>

Conference Line: 888-251-2909

Participation Code: 4584731

[SFMTA.com/ENGSpeakerCard](https://sfmta.com/ENGSpeakerCard)