

6th Street Pedestrian Safety Project | OVERVIEW

PROJECT OVERVIEW

The 6th Street corridor has one of the highest concentrations of pedestrian collisions, injuries, and fatalities in San Francisco. Every 16 days a person gets hit walking or biking on 6th Street. Collisions are most concentrated between Market and Howard Streets, with half of them involving a pedestrian

6th Street is a critical location for our Agency to focus our commitment on equity and inclusivity with safety improvements. So many of the City's communities that are most vulnerable to traffic collisions live around 6th Street. One out of every three residents are seniors, mobility impaired, or both. Half the residents are people of color, half the population primarily speaks a language that is not English, and half don't own a car. In other words some of the most marginalized communities live around 6th Street.

In support of San Francisco's Vision Zero initiative, the 6th Street Pedestrian Safety Project aims to create a safe and inviting place for people to walk by transforming 6th Street with wider sidewalks, new traffic signals, and streetscape improvements.

PROJECT GOALS



SAFETY

Improve safety for all street users, including pedestrians, cyclists, and motorists.

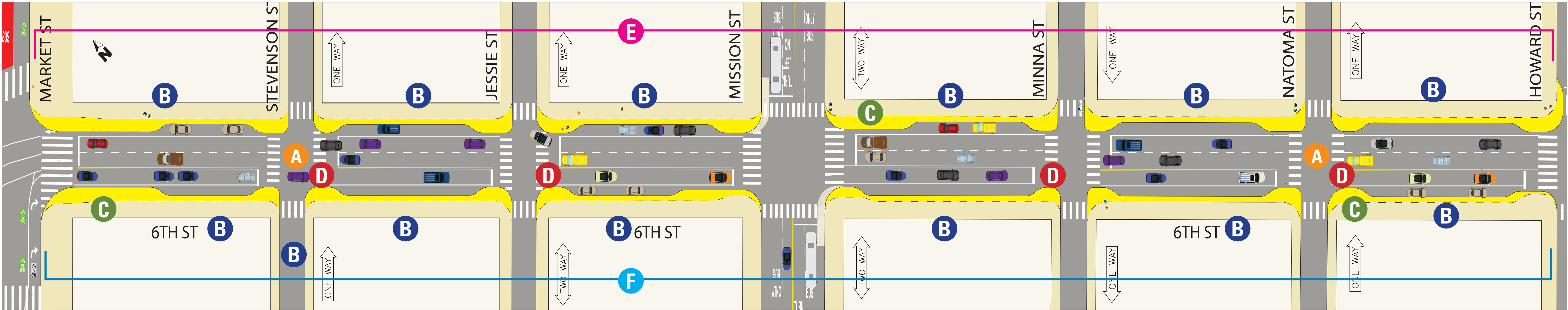


COMMUNITY

Create a safe and inviting public space for all people who live, work, or visit 6th Street.



STREET IMPROVEMENTS



Remove 1 lane of southbound vehicle traffic Market to Howard

2 southbound vehicle lanes south of Howard

- A** **INSTALL ALLEY TRAFFIC SIGNALS** to provide safe crossing opportunities & calm traffic flow
- B** **NEW PEDESTRIAN STREET LIGHTS** to provide more pedestrian visibility
- C** **CORNER BULBOUTS** to reduce turning vehicle speed and shorten crossing distances for pedestrians along corridor (shown in yellow)
- D** **INSTALL & UPGRADE CROSSWALKS** to increase the number of safe crossing opportunities
- E** **STREETScape IMPROVEMENTS** to enhance livability and celebrate the 6th Street community identity
- F** **WIDEN SIDEWALKS** to increase pedestrian capacity and public open space

6th Street Pedestrian Safety Project | TIMELINE



PAST OUTREACH AND SAFETY IMPROVEMENTS



Conceptual Design | STREETSCAPE ELEMENTS

STREET TREES



Washingtonia x filibusta / Hybrid fan palm at empty tree wells & at new locations

ADDITIONAL FURNISHING



Bike Racks



Trash Receptacles



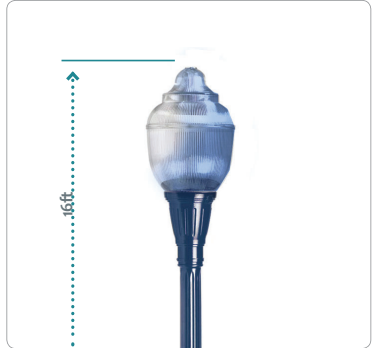
Graphic Opportunity

**Note: Images are for representation and not to be taken literally. Exact design of trash receptacles to be determined.

SIDEWALK LIGHTING



Existing Holophane Memphis
22ft Tall Pole + Double Teardrop Fixtures

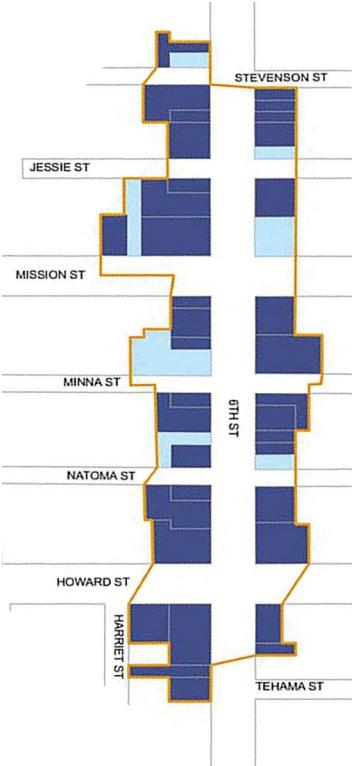


Pedestrian Scale Light Pole & Fixture **
16ft Tall Pole + Fixture

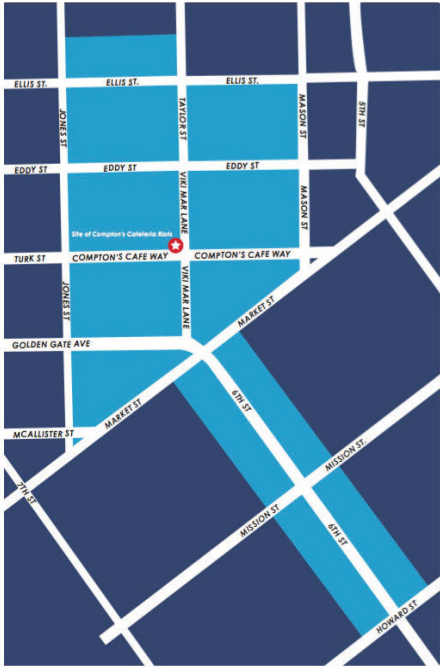


Conceptual Design | NEIGHBORHOOD IDENTIFIERS

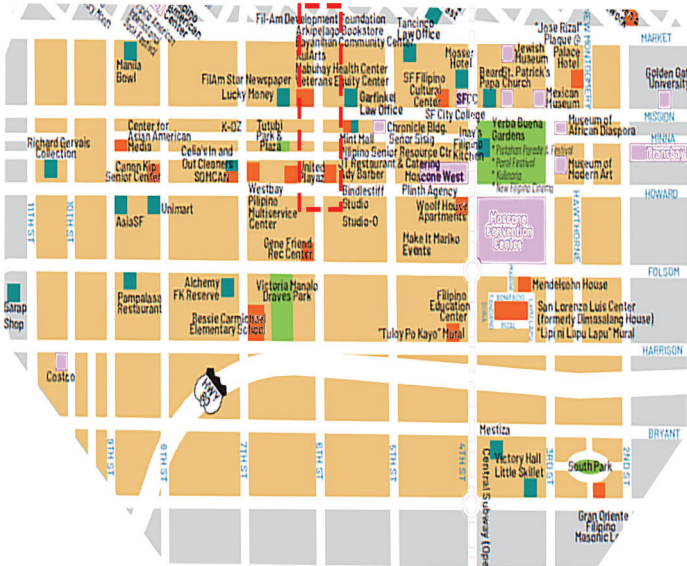
CULTURAL DISTRICT MAPS



Sixth Street Lodging House Historic District

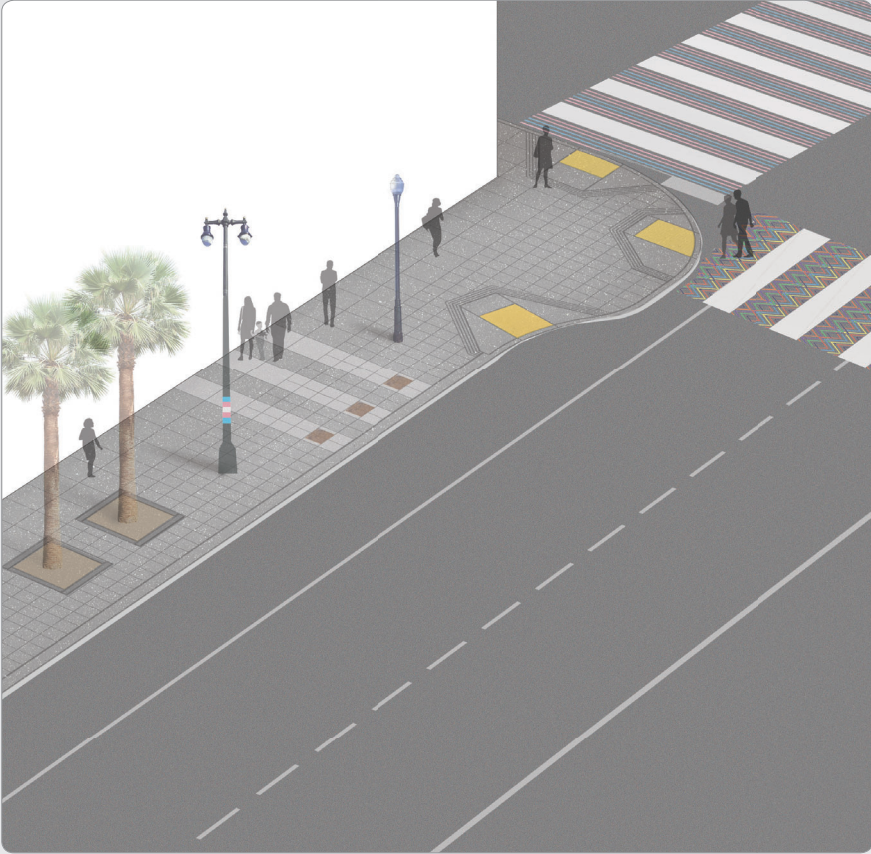


Boundaries of Compton's TLGB District



SOMA Pilipinas: San Francisco's Filipino Cultural District

STREET PERSPECTIVE



INTERPRETIVE PLAQUES:



Castro Rainbow Walk



Compton's Cafeteria Riot Plaque on Taylor Street



Transgender Pride Flag



Thrasher Manhole Cover

PAVING:



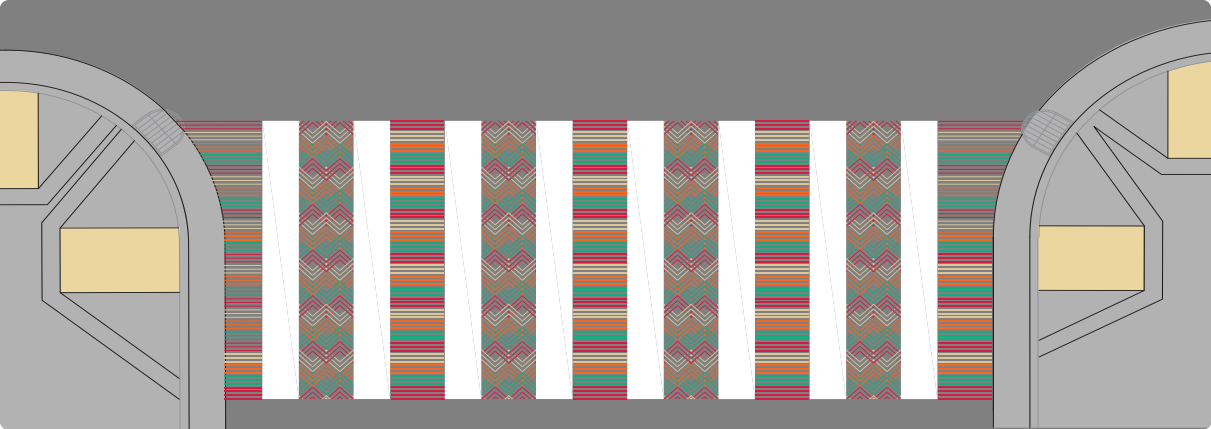
Sparkle Grain Concrete



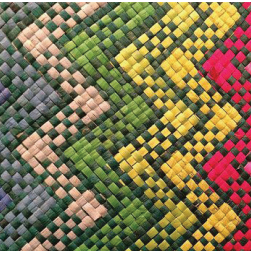
Two Tone Finish at Plaques

Conceptual Design | NEIGHBORHOOD IDENTIFIERS

DECORATIVE CROSSWALK: BANIG OPTION

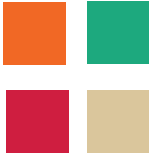


BANIG INSPIRATION:



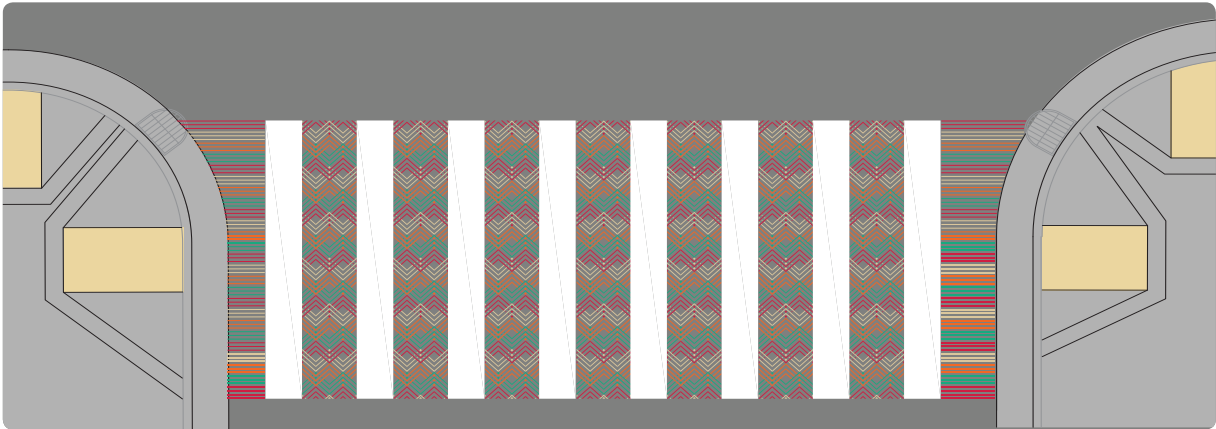
Pattern By: Haja Amina Appi

COLOR PALETTE:




Conceptual Design | NEIGHBORHOOD IDENTIFIERS


DECORATIVE CROSSWALK: BANIG OPTION



BANIG INSPIRATION:



COLOR PALETTE:

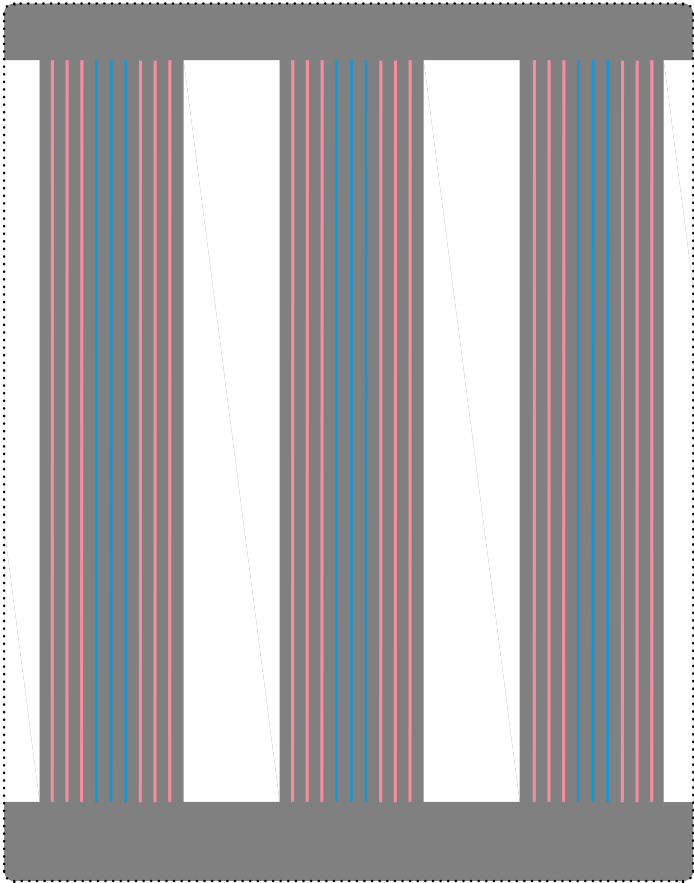
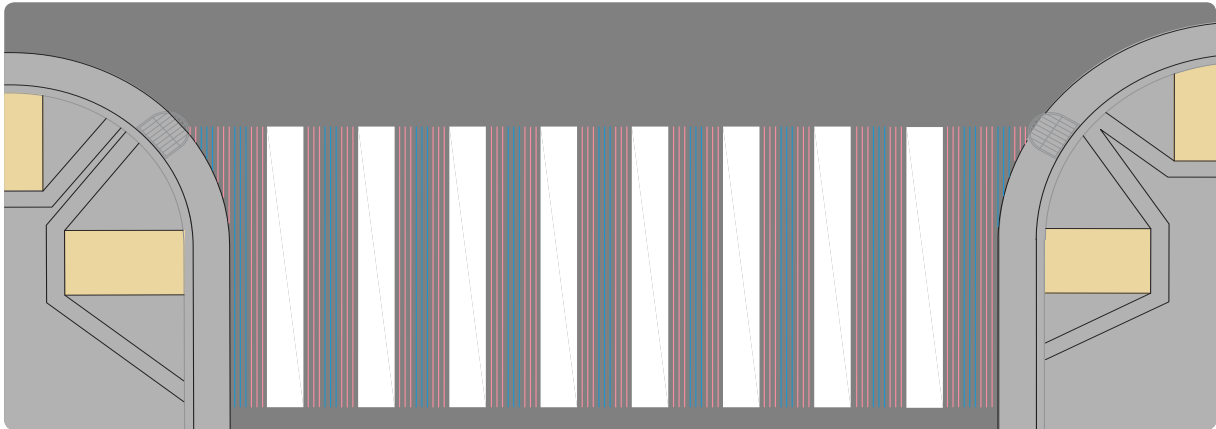


Pattern By: Haja Amina Appi

**Note: Final pattern and design of banig crosswalks still in progress.

Conceptual Design | NEIGHBORHOOD IDENTIFIERS

DECORATIVE CROSSWALK: TRANS FLAG

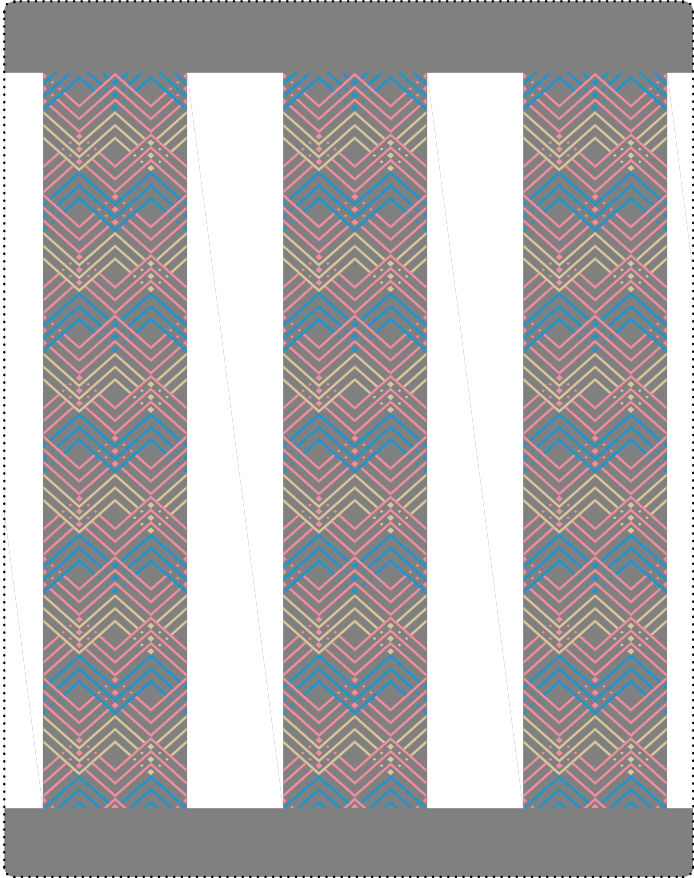
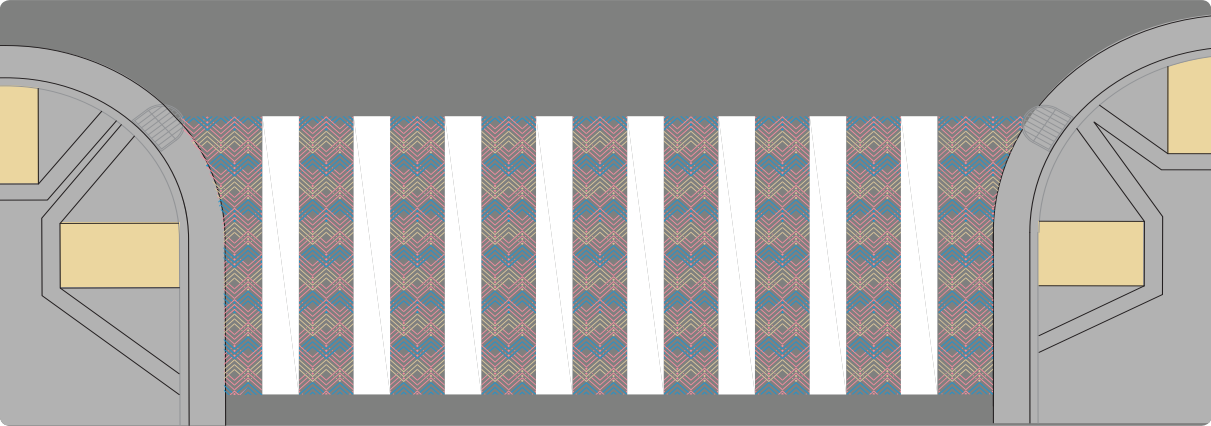


TRANS PRIDE FLAG:

COLOR PALETTE:

Conceptual Design | NEIGHBORHOOD IDENTIFIERS

DECORATIVE CROSSWALK: HYBRID AT HOWARD



BANIG INSPIRATION:



Pattern By: Haja Amina Appi

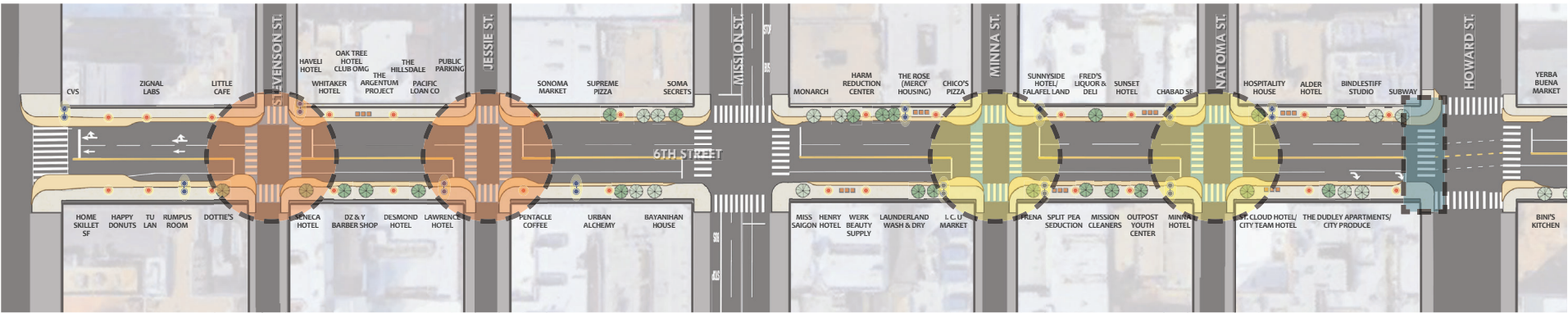
TRANS PRIDE FLAG:



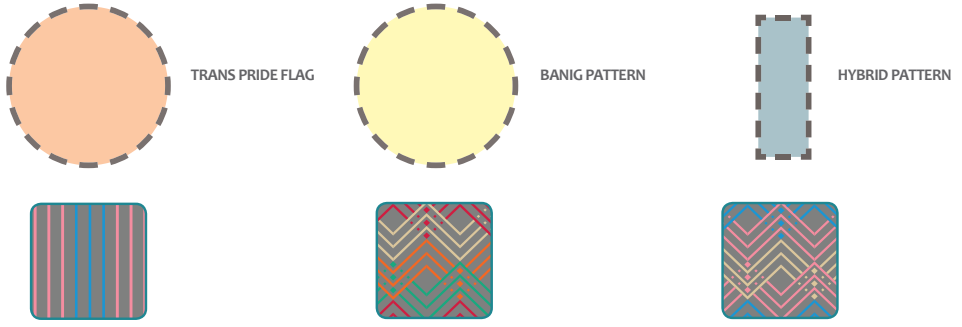
COLOR PALETTE:



Decorative Crosswalk | LOCATIONS



LEGEND >>>



PEDESTRIAN EXPERIENCE

