



Statement of Needs:

Challenges to Making the ConnectSF Vision a Reality

About ConnectSF: Partnership and Collaboration

ConnectSF is a multi-agency process to build an effective, equitable, and sustainable transportation system for San Francisco's future



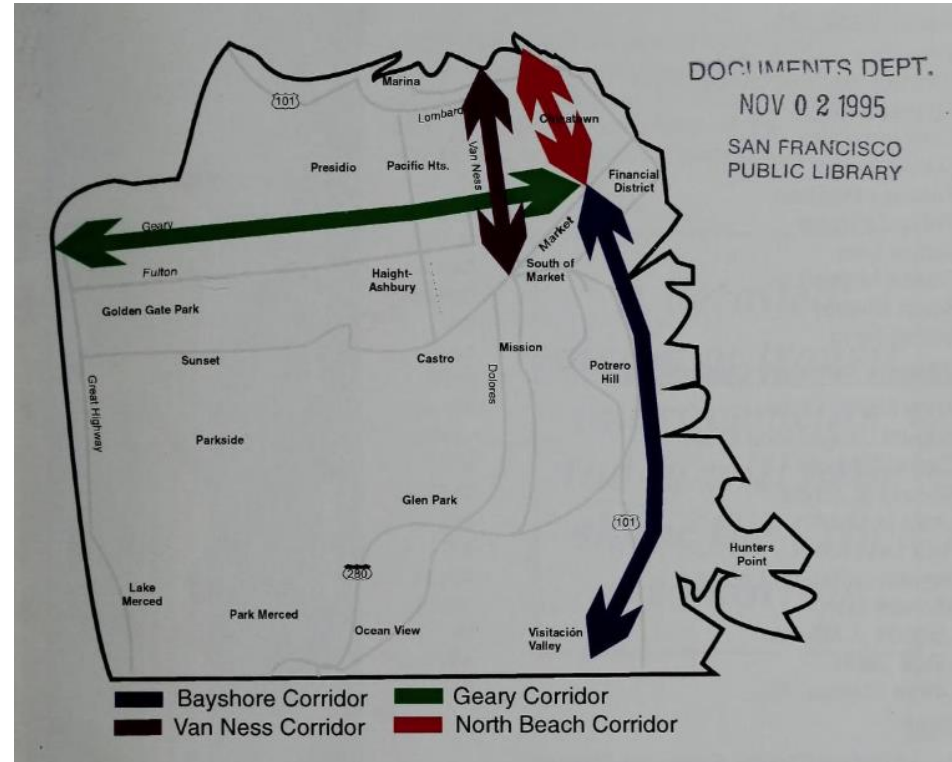
**San Francisco
County Transportation
Authority**

Prior Generation: 1995 Four Corridors Plan

Shaped 25 years of major transit investments

All four corridors built or under construction now

When done well, such plans can be transformative



ConnectSF Goals



Equity



**Environmental
Sustainability**



**Economic
Vitality**

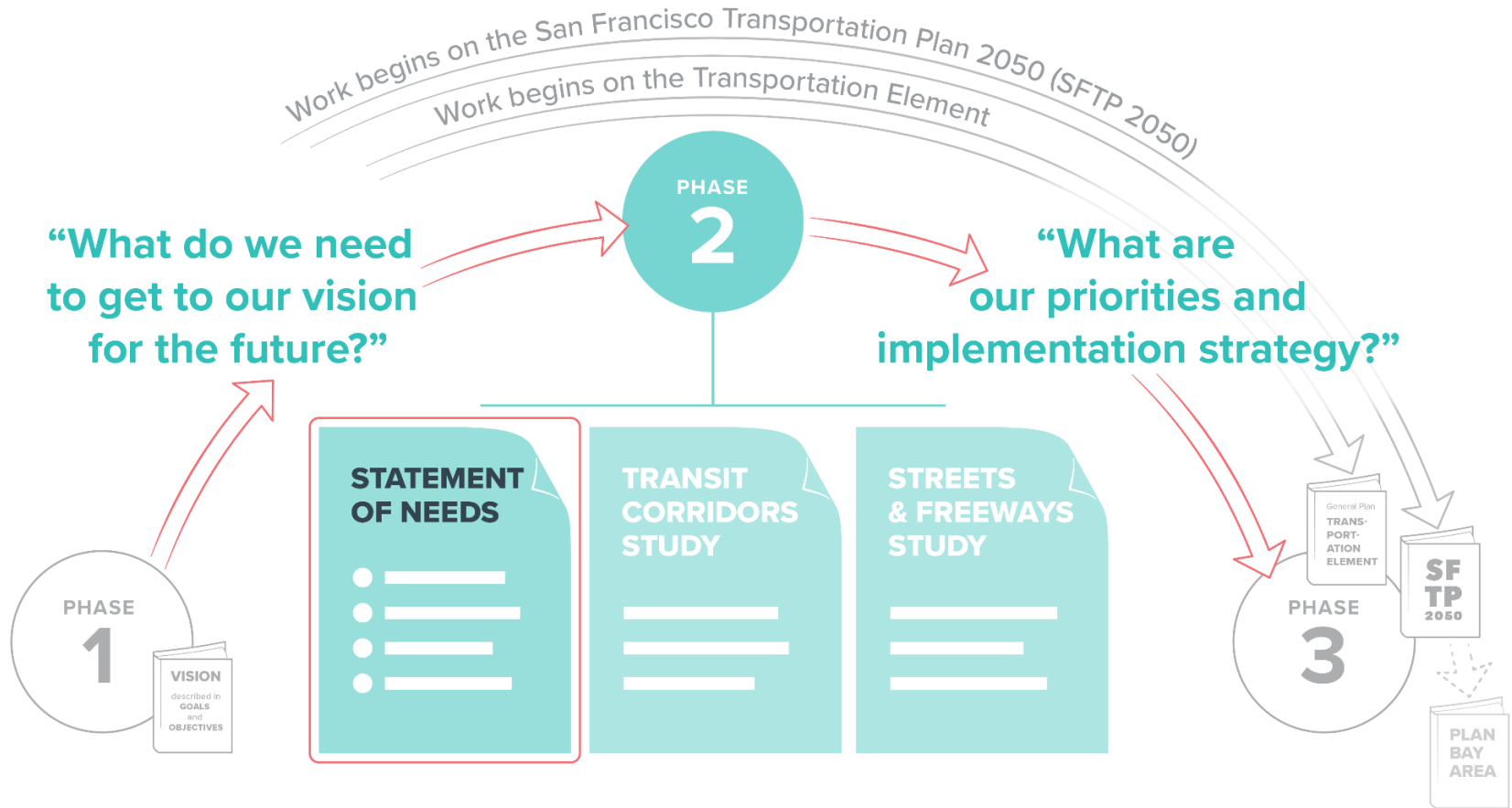


**Safety &
Livability**



**Accountability
and Engagement**

About ConnectSF: Overall Process





Key Question for Statement of Needs

What challenges do we need to address to get to our vision for the future?

Key Findings

Fast paced growth has occurred since 1980, and will likely continue

Our transportation policies are working, but we need to do more to meet our aggressive goals

New policies and investments - both incremental and transformational - are needed

Challenge: Accommodate Forecasted Growth

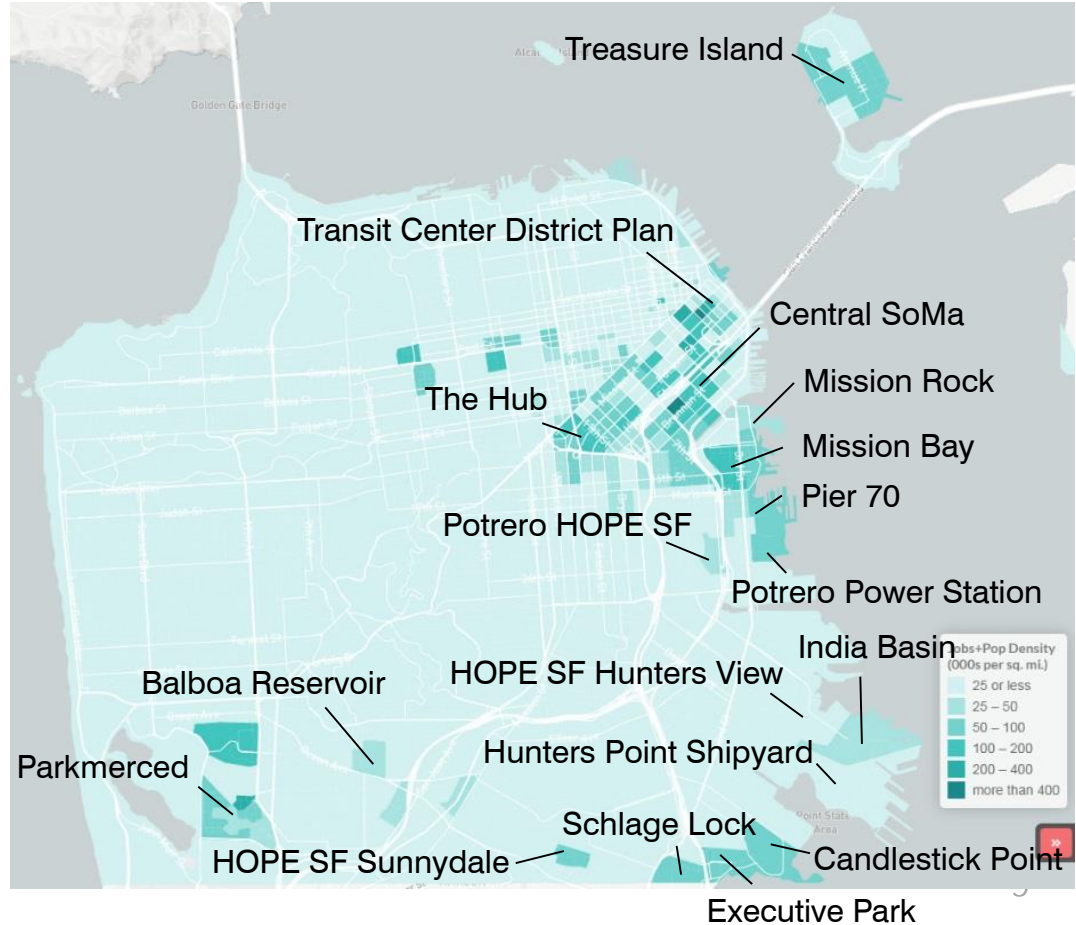
	San Francisco		
	Current	2050	% Change
Population	880,000	1,245,000	29%
Jobs	745,000	924,000	24%

	Bay Area		
	Current	2050	% Change
Population	7,330,000	10,350,000	41%
Jobs	3,798,000	5,059,000	33%

Challenge: Accommodate Forecasted Growth

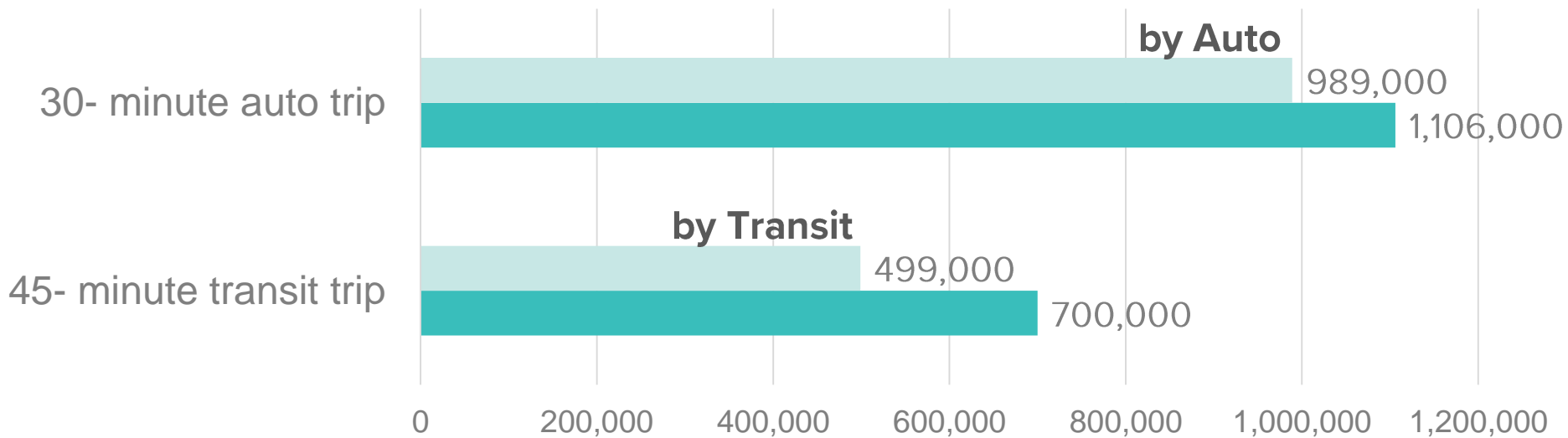
2050 Change in SF Population and Employment Density

Based on adopted plans,
policies, and entitlements



Challenge: Improve Job Access via Sustainable Modes

Number of Jobs Accessible by Mode



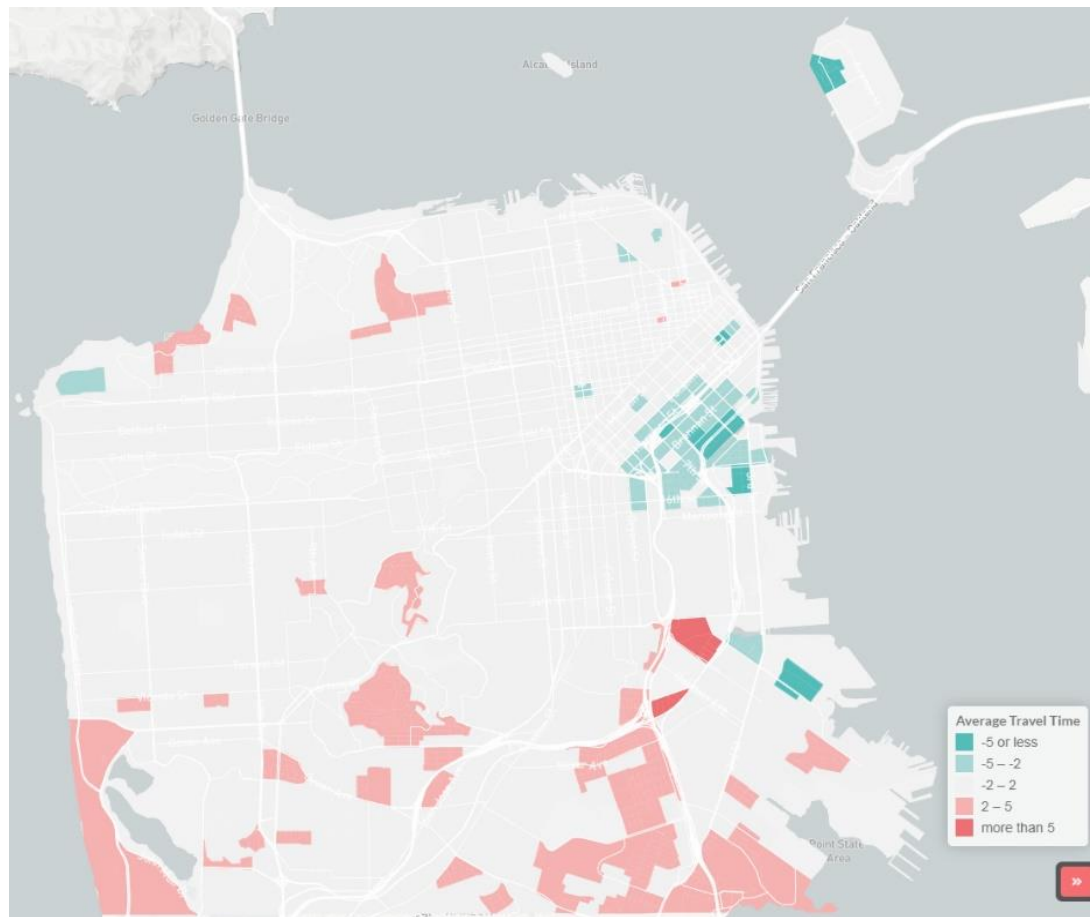
Challenge: Improve Connections to Outer Neighborhoods

2050 Change in Average Commute Time

Commuter times improve near downtown

Outer neighborhoods see longer commutes

Need for focus on equity



Challenge: Create Equitable Transportation Outcomes

CoCs are Communities of Concern

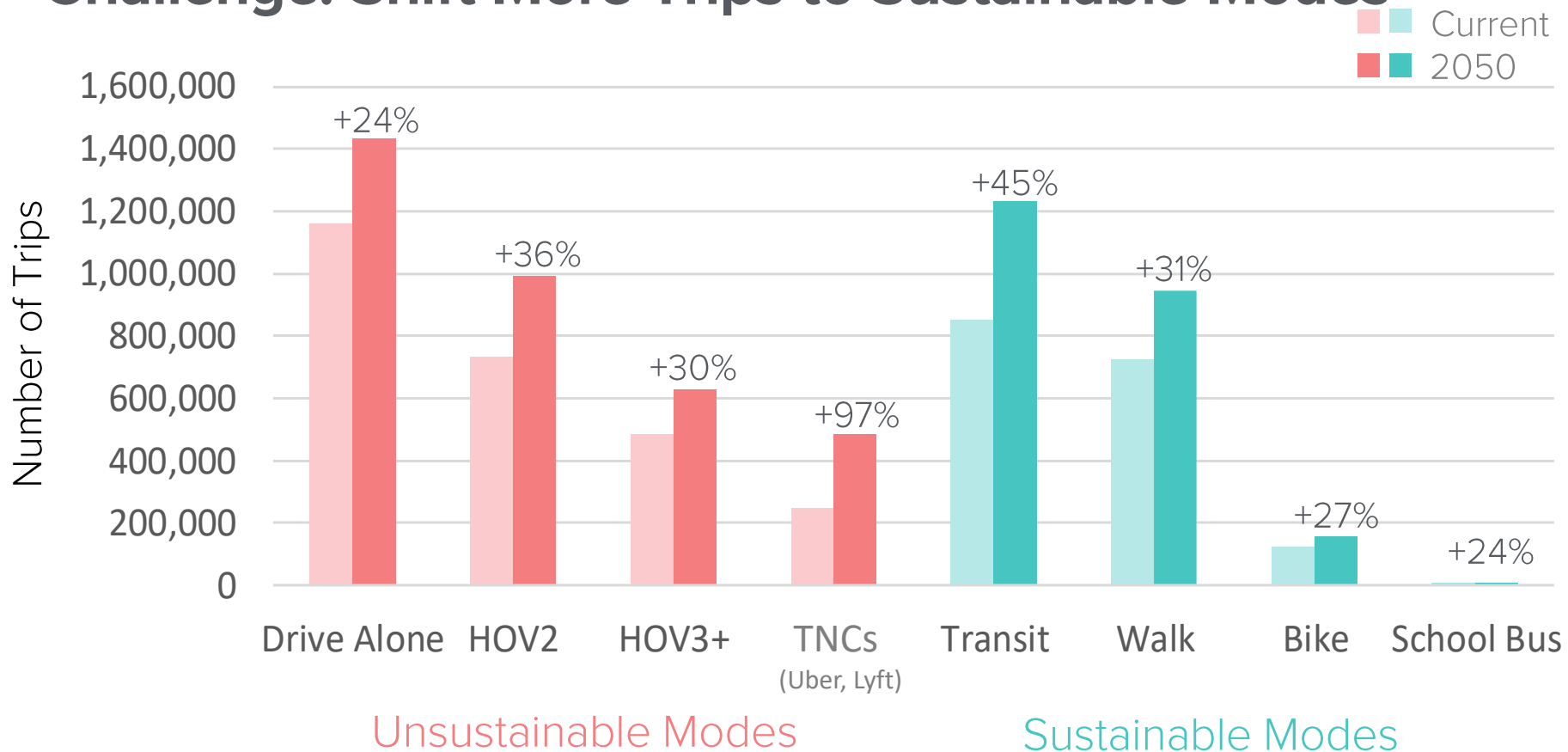
Number of Jobs Accessible by 45-minute Trip on Transit

	Current	2050	% Change
CoC	512,800	674,000	31%
Non-CoC	492,300	712,000	45%

Number of Jobs Accessible by 30-minute Trip by Car

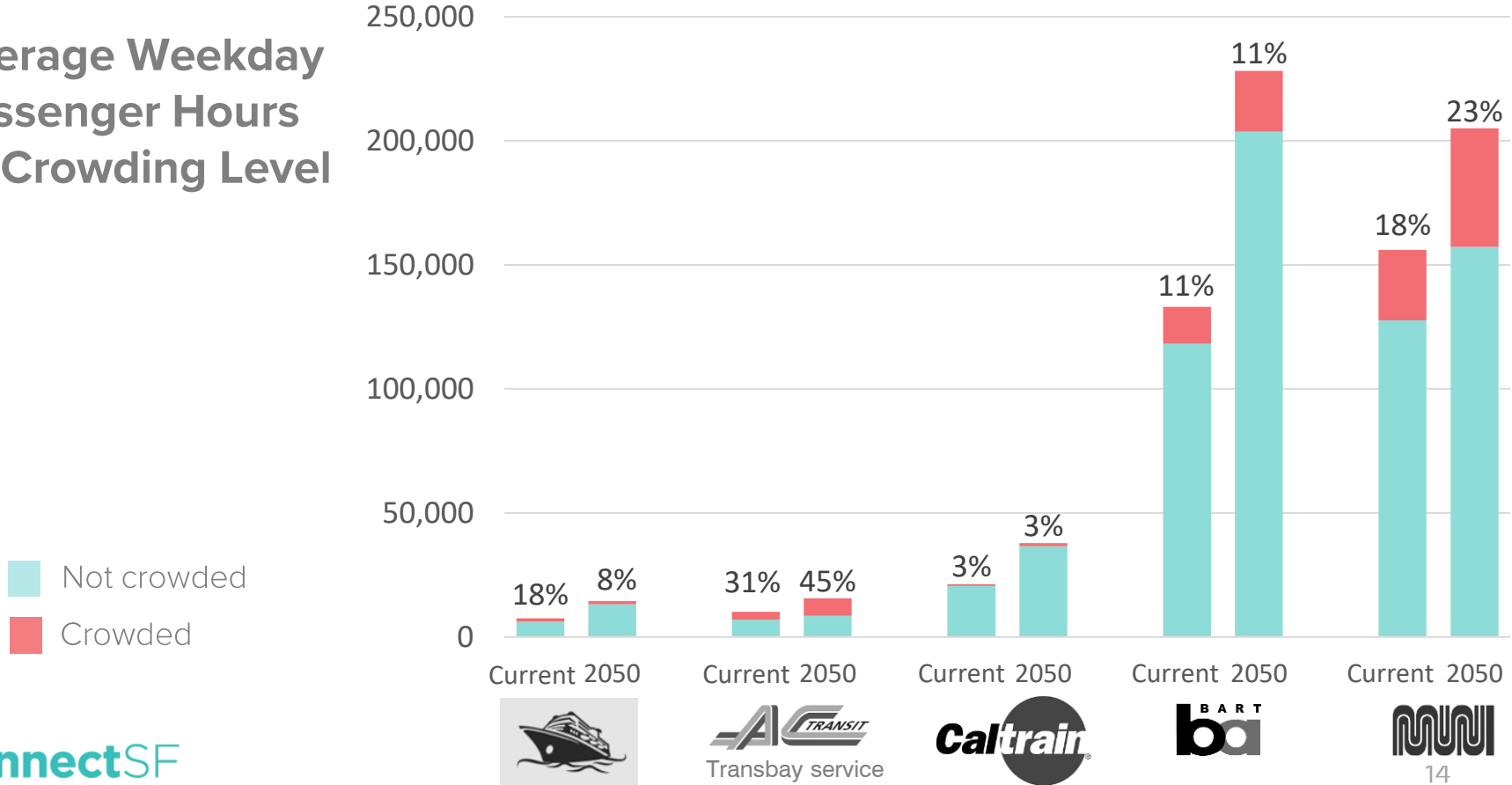
	Current	2050	% Change
CoC	996,700	1,072,600	8%
Non-CoC	985,800	1,122,300	14%

Challenge: Shift More Trips to Sustainable Modes



Challenge: Further Expand Transit Capacity

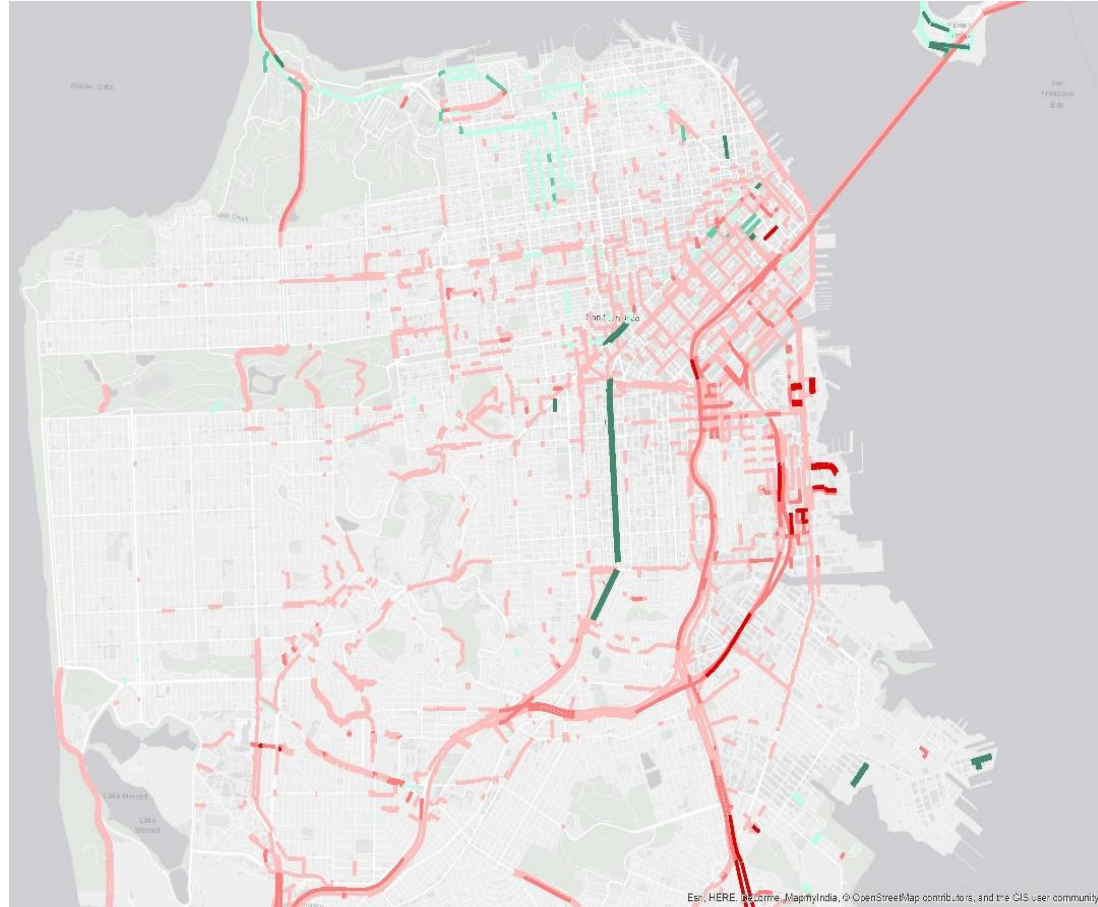
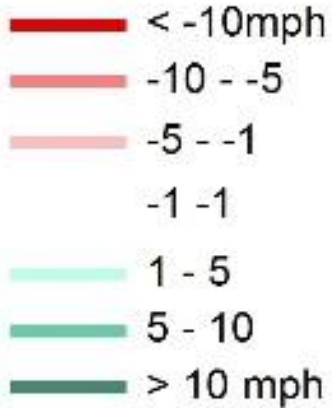
Average Weekday Passenger Hours by Crowding Level



Challenge: Manage Congestion

Change in AM Speeds by Road Segment

Congestion forecasted on most corridors



Key Findings Recap

Challenges to Address



EQUITY



ECONOMIC
VITALITY



ENVIRONMENTAL
SUSTAINABILITY

Create Equitable Transportation Outcomes

- Improve transportation connections for outer neighborhoods
- Improve jobs access via sustainable modes

Improve Sustainability

- Reduce emissions by shifting more trips to sustainable modes
- Further expand transit capacity
- Manage congestion

Accommodate Forecasted Growth

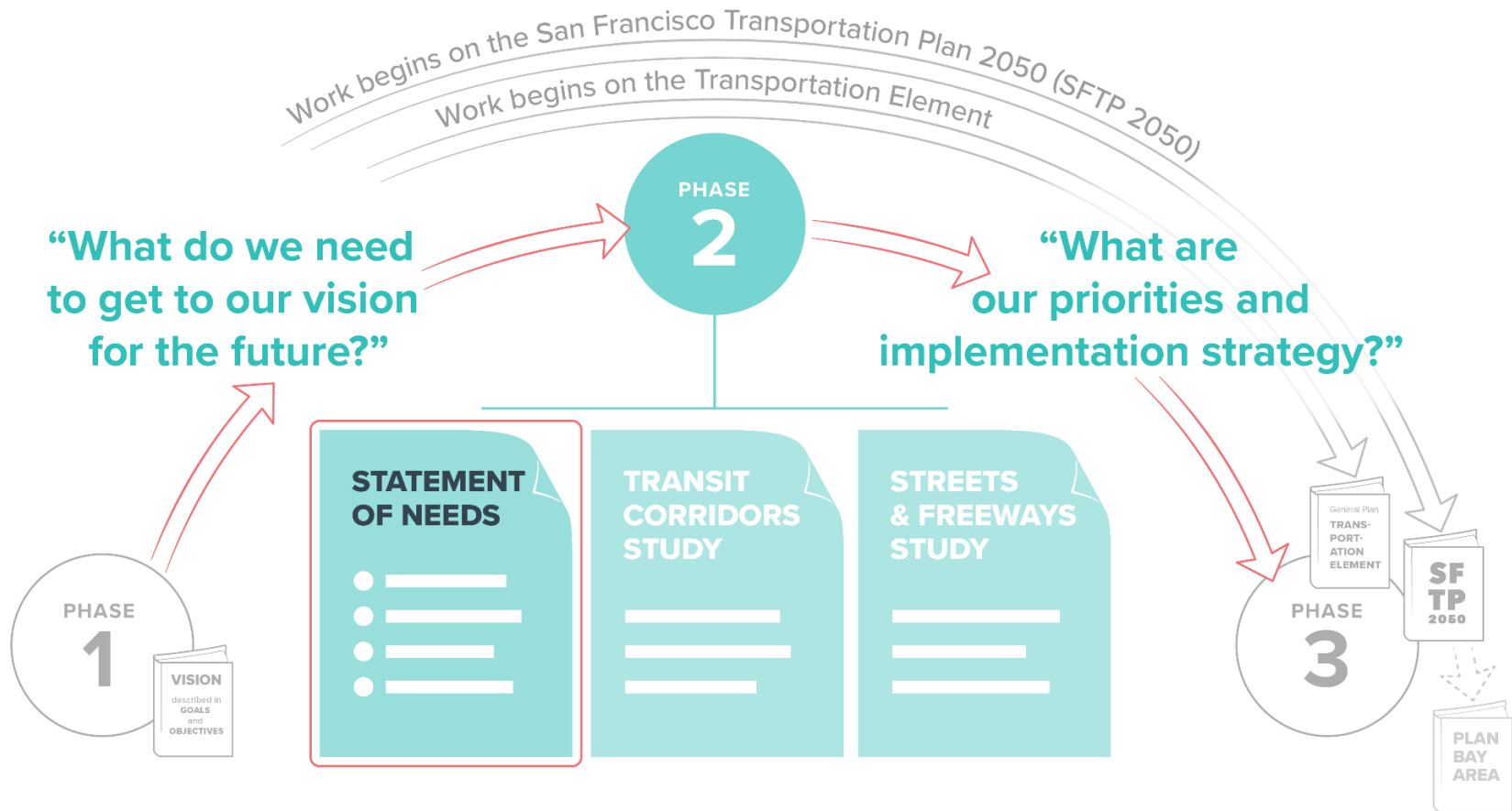
Key Findings Recap

Fast paced growth has occurred since 1980, and will likely continue

Our transportation policies are working, but we need to do more to meet our aggressive goals

New policies and investments - both incremental and transformational - are needed

ConnectSF: Overall Process



Regional Coordination

Plan Bay Area 2050 is the region's long-range transportation planning effort led by the Metropolitan Transportation Commission (MTC)

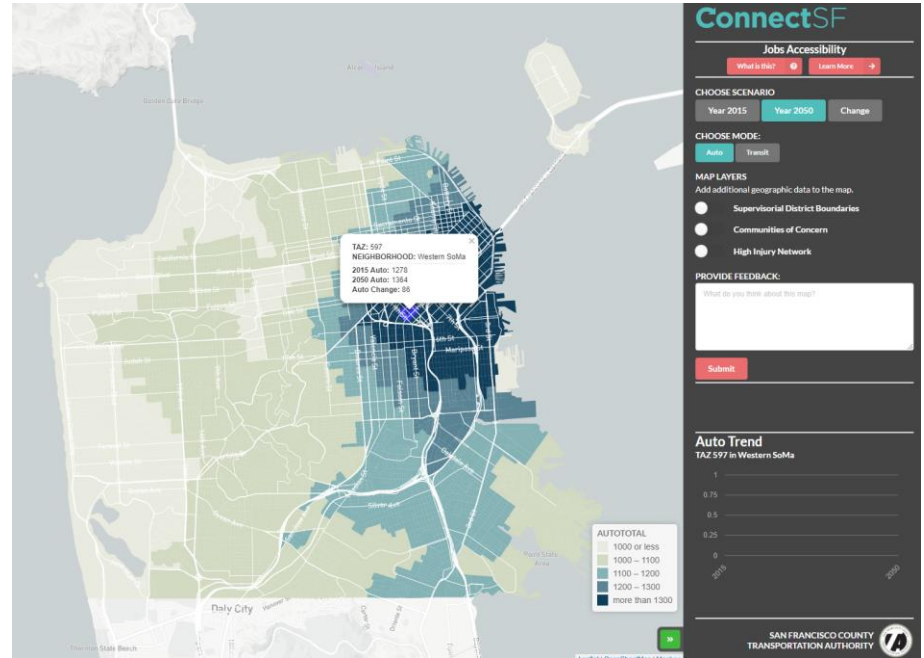
Results of ConnectSF will feed into Plan Bay Area 2050



Opportunities for Engagement

Explore interactive maps available at:
www.connectSF.org/about/transportation-needs

In-person outreach
in summer/fall 2019



Request a presentation (email connectsf@sfgov.org)



Thank you

San Francisco
Planning



San Francisco
County Transportation
Authority



For more info:
www.connectsf.org

Contact:
kansai.uchida@sfmta.com