



**SFMTA**  
Municipal  
Transportation  
Agency

# **Monthly Security Incident Report September 2015**

October 16, 2015

SFMTA

One South Van Ness Ave

# Executive Summary

## September 2015

Security incidents fell 2% compared to August

- In August, incidents dropped 3% compared to July
- Compared to Sept. '14, incidents fell 11%

Fighting remained the most frequent incident type for the ninth straight month, followed by vandalism and theft

- In August, verbal altercations replaced theft as the third most frequent type of security incident
- Fighting comprised 30% of all security incidents in Sept. while vandalism comprised 18% and theft comprised 13% of all security incidents.
- In August, fighting comprised 30% of all security incidents in Aug. while vandalism comprised 19% and verbal altercations comprised 16% of all security incidents

The 14 remained the line with the most security incidents, for the sixth consecutive month

- 7% of all security incidents in Sept. occurred on the 14.
- Incidents on the 14 fell 21% compared to Aug., after rising 8% in Aug. compared to July
- The 9, 49 and KT were the second and third most affected lines in Sept. – incidents on the 49 and 9 fell 30% and 21%, respectively, compared to Aug. while incidents on the KT more than doubled.
- Incidents on the 5 spiked in Sept. compared to Aug.

The intersection with the most security incidents in Sept. was 7<sup>th</sup> & Market – 2% of all security incidents in Sept. occurred at this intersection.

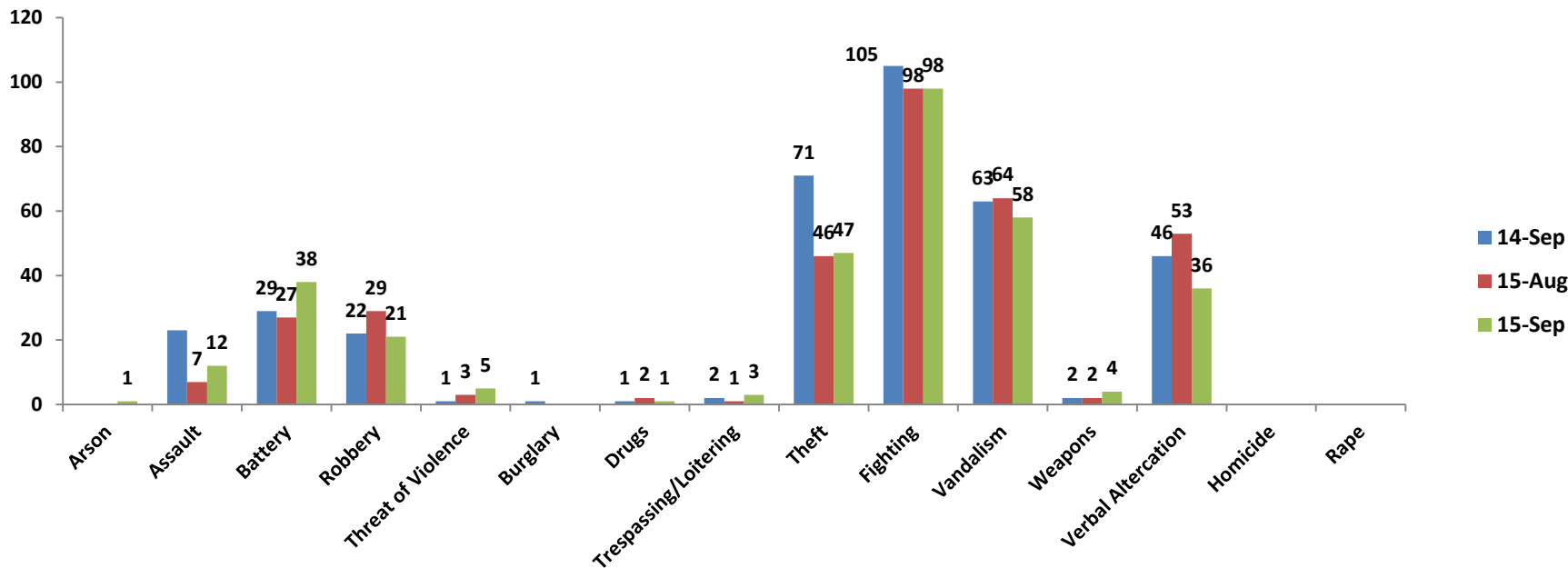
- Incidents at this intersection nearly tripled compared to Aug.
- 20<sup>th</sup> & Mission experienced a sharp increase in security incidents in Sept. – half of all security incidents at this intersection for the year-to-date occurred in Sept.

The following security incidents experienced an increase in September compared to August: arson, assault (71%), battery (41%), threat of violence (40%), trespassing, theft (2%) and weapons.

The following security incidents experienced a decrease in September compared to August: robbery (-28%), drugs, vandalism (-9%) and verbal altercation (-32%)

# Security Incidents by Type

## September 2015



### Total Incidents

### Year-on-Year & Month-on-Month

**Sept 2014**

**Aug 2015**

**Sept 2015**

366

332

324

Security incidents fell 2% compared to August, after falling 3% in August compared to July

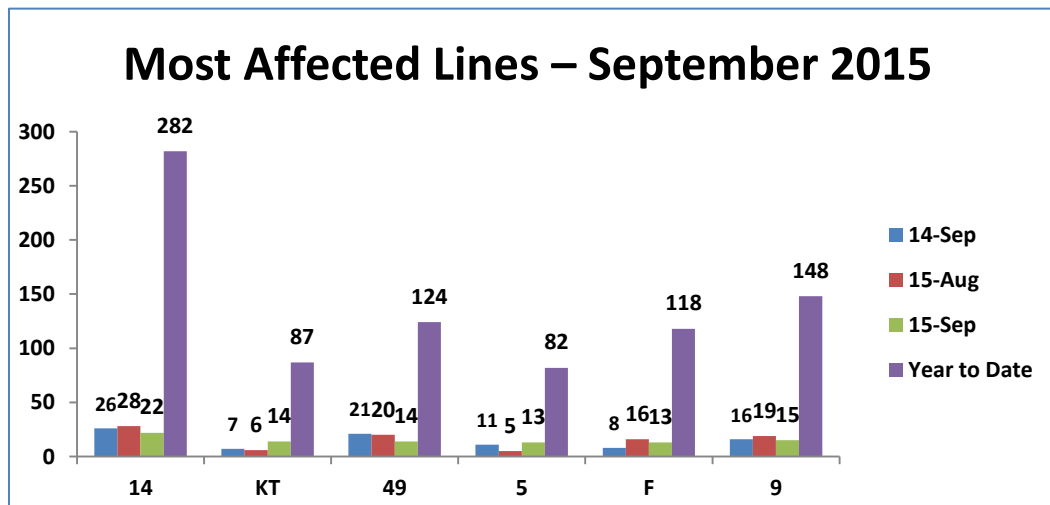
- Compared to the same month in the year prior, incidents dropped 11%

Fighting remained the incident type with the most incidents, followed by vandalism and theft

- In August, verbal altercations replaced theft as the third most frequent type of security incident

# Security Incidents by Line

## September 2015



The 14 remained the line with the most security incidents for the sixth consecutive month

- Incidents on the 14 fell 21% compared to Aug., after rising 8% in Aug. compared to July
- Compared to Sept. '14, incidents fell 15%

The 9, 49 and KT were the second and third most affected lines in Sept.

- In Aug., the F replaced the KT as the third most incident-prone line
- Incidents on the 49 and 9 fell 30% and 21%, respectively, compared to Aug. while incidents on the KT more than doubled

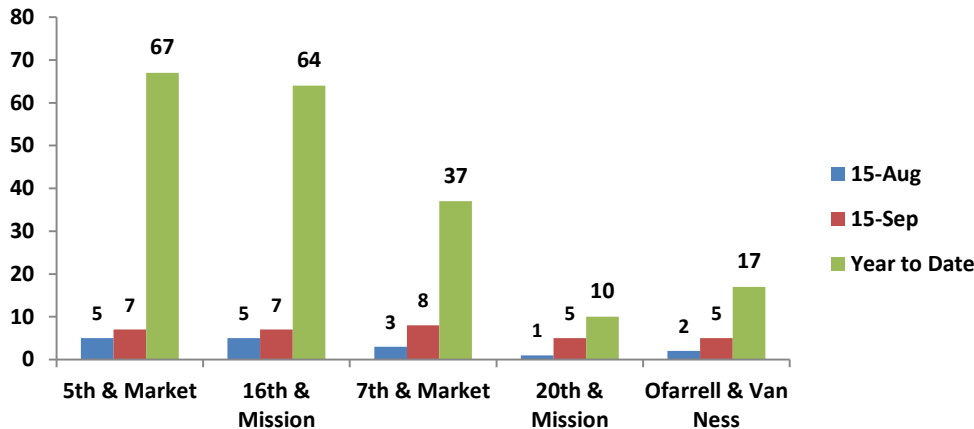
Incidents on the 5 spiked in Sept. compared to Aug.

2015	
Line	# of Incidents
1	26
2	15
3	16
5	82
6	56
7	23
8	61
9	148
10	10
12	17
14	282
17	3
18	7
19	79
21	22
22	104
23	20
24	42
25	7
27	45
28	35
29	68
30	77
31	48
33	21
35	2
36	5
37	1
38	143
41	2
43	31
44	34
45	33
47	70
48	26
49	124
52	7
54	63
55	2
56	2
59	6
60	14
61	9
67	4
71	37
90	7
91	22

2015 (Cont.)	
Line	# of Incidents
94	1
97	1
98	1
108	6
338	2
349	1
508	1
14L	35
14R	42
14X	8
16X	1
30AX	1
30X	1
38AX	1
38B	1
38L	33
38R	20
5L	2
5R	4
71L	1
8AX	34
8BX	9
8X	105
83X	1
9L	10
9R	20
E	1
F	118
J	21
KT	87
K	3
L	42
M	21
N	47
T	5
Unknown	377

# Security Incidents by Location September 2015

## Most Affected Intersections – September 2015



7<sup>th</sup> & Market became the intersection with the most security incidents in Sept.

- Incidents at this intersection nearly tripled compared to Aug.

Half of all incidents at 20<sup>th</sup> & Mission occurred in Sept.

### September 2015

Location	#	Line
1 <sup>st</sup> & Market	4	2; 9R; 21; F
2 <sup>nd</sup> & Mission	2	14R
3 <sup>rd</sup> & 20 <sup>th</sup>	4	48; 22
3 <sup>rd</sup> & Gilman	2	KT
3 <sup>rd</sup> & Palou	2	24; 54
4 <sup>th</sup> & King	2	KT
4 <sup>th</sup> & Market	2	8AX; L
5 <sup>th</sup> & Market	7	9; J; N; 27; 45; K
5 <sup>th</sup> & Mission	3	8AX; 8
6 <sup>th</sup> & Market	3	9; 7; 9R
7 <sup>th</sup> & Folsom	2	19;
7 <sup>th</sup> & Market	8	6; 9; F; 9R
7 <sup>th</sup> & Mission	3	14
8 <sup>th</sup> & Mission	3	19; 14R
9 <sup>th</sup> & Market	4	F; 9
15 <sup>th</sup> & Market	2	F; 91
16 <sup>th</sup> & Bryant	2	
16 <sup>th</sup> & Mission	7	14; 33; 22; 14R; 49
16 <sup>th</sup> & Potrero	2	9R
19 <sup>th</sup> & Judah	2	28
20 <sup>th</sup> & Mission	5	14; 14R
24 <sup>th</sup> & Mission	4	12; 14R; 49
24 <sup>th</sup> & Potrero	3	0; 48
28 <sup>th</sup> & Fulton	2	5
30 <sup>th</sup> & Church	2	24
30 <sup>th</sup> & Mission	3	49

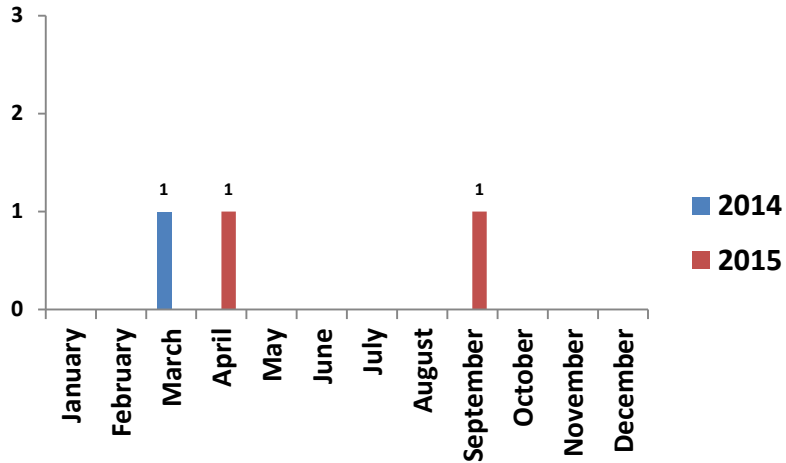
### September 2015 Continued

Location	#	Line
Arleta & Bay Shore	2	8; 9
Church Station	2	M; L
Church & Market	3	22
Cyril Magnin & Market	2	8AX
Eddy & Fillmore	2	31; 22
Eddy & Larkin	2	19
Eddy & Van Ness	3	49; 90
Embarcadero Station	3	KT; N
Ferry Terminal	2	6; 14
Fillmore & Mcallister	3	22; 5
Geary & Kearny	3	38; 38R; 8
Geary & Van Ness	2	38
Geneva & Mission	2	14
Geneva & Naples	2	8; 8AX
Geneva & Rio Verde	2	9
Grove & Van Ness	2	47
Haight & Masonic	2	7; 21
Hudson & Newhall	2	54
Jackson & Stockton	2	30
Jones & Turk	2	
Market & Montgomery	3	31
McCallister & Van Ness	2	5; 47
Mission & Persia	2	14
Ofarrell & Van Ness	5	38; 49
Paul & San Bruno	3	29
San Bruno & Silver	2	44
Stockton & Pacific	3	30; 8; 45
Transbay Terminal	4	38; 5; 38R
West Portal & Ulloa	2	KT; N

# Arson

## September 2015

# of Incidents



Month-on-Month	
Aug	Sept
0	1

Year-on-Year	
Sept '14	Sept '15
0	1

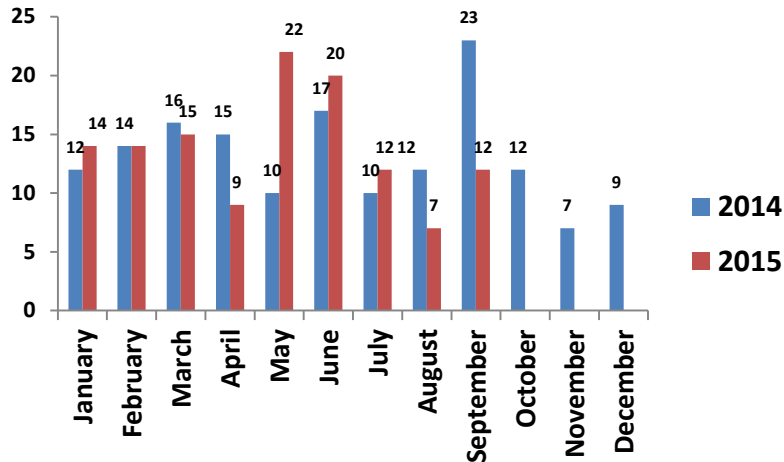
Year to Date	
2014	2015
1	2

September marked the first time since April that there was an arson incident.

# Assault

## September 2015

# of Incidents



Month-on-Month

Aug	Sept
7	12

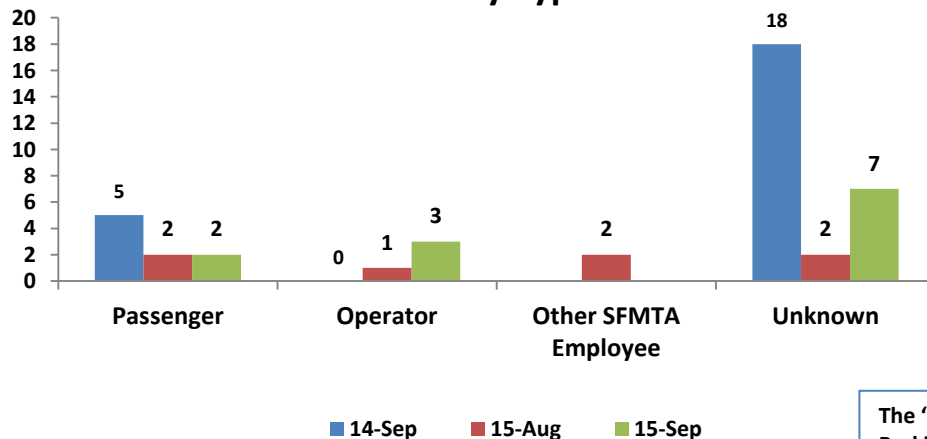
Year-on-Year

Sept '14	Sept '15
23	12

Year to Date

2014	2015
129	125

Incidents by Type



Assault incidents rose 71% compared to Aug., after falling 41% in Aug. compared to July.

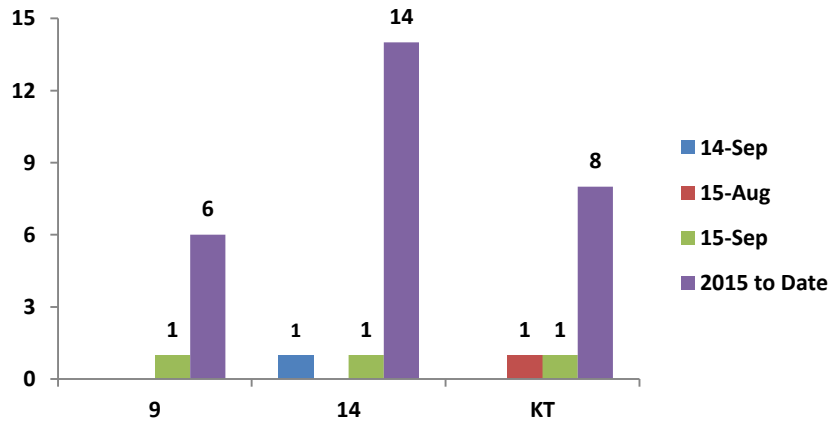
- Aug. had the fewest assault incidents for the year-to-date

Incidents fell 48% compared to Sept. '14, after falling 41% in Aug. '15 compared to Aug. '14.

The 'Other SFMTA Employee' assault incidents in July 2015 were on a Parking Control Officer and a SFMTA Ambassador.

# Assault by Line September 2015

Most Affected Lines – September 2015



No line had more than one assault incident this month.

The 14 remained the line with the most assault incidents in the year-to-date.

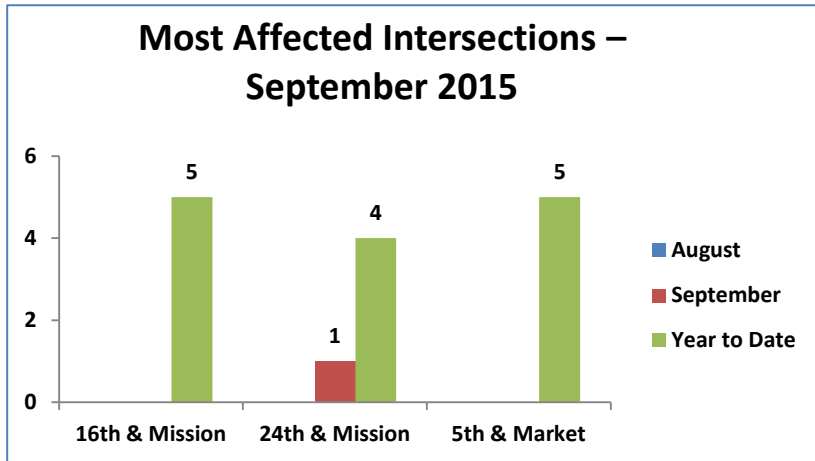
- 11% of all assault incidents for the year to date occurred on the 14

2015 (Jan-Sept)	
Line	# of Incidents
1	1
5	3
6	1
9	6
10	1
14	14
14L	1
19	1
21	1
22	2
24	1
27	1
28	1
29	5
30	1
31	3
38	2
43	2
45	1
47	4
48	1
49	5
54	1
71	3
5L	1
8AX	3
8X	4
91	1
14R	1
14X	1
38R	1
E	1
F	2
J	1
KT	8
L	2
Unknown	37

2014 (Jan-Sept)	
Line	# of Incidents
5	3
6	1
9	4
14	13
19	2
21	1
22	5
24	2
27	3
28	1
29	2
30	4
31	2
44	2
45	1
47	1
49	2
54	2
59	1
71	2
108	1
8X	10
14L	6
38L	1
F	4
J	3
KT	3
L	3
M	4
N	3
Unknown	37



# Assault by Location September 2015



September		
Location	#	Line
8 <sup>th</sup> & Mission	1	
9 <sup>th</sup> & Market	1	F
11 <sup>th</sup> & Market	1	9
19 <sup>th</sup> & Wawona	1	28
20 <sup>th</sup> & Mission	1	14
24 <sup>th</sup> & Mission	1	
Bay Shore & Sunnydale	1	KT
Broadway & Van Ness	1	49
Civic Center	1	
Fort Mason	1	43
Mcallister & Van Ness	1	5
Paul & San Bruno	1	29

2015 Year to Date		
Location	#	Line
11 <sup>th</sup> & Market	2	9
Divisadero & Eddy	2	31
Civic Center	2	KT
Embarcadero & Washington	2	E; F
Market & 5 <sup>th</sup>	5	8X; 6
Mission & 11 <sup>th</sup>	2	14
Mission & 16 <sup>th</sup>	5	22; 49
Mission & 20 <sup>th</sup>	2	14
Mission & 22 <sup>nd</sup>	2	14
Mission & 24 <sup>th</sup>	4	14L; 48; 14
Market & Cyril Magnin	2	8X
Mission & Geneva	2	14
Mission & Silver	2	14X
Palou & 3 <sup>rd</sup>	2	54; KT
Van Ness & Mcallister	3	5; 47
Van Ness & Union	2	45; 47

No intersection had more than one assault incident in Sept.

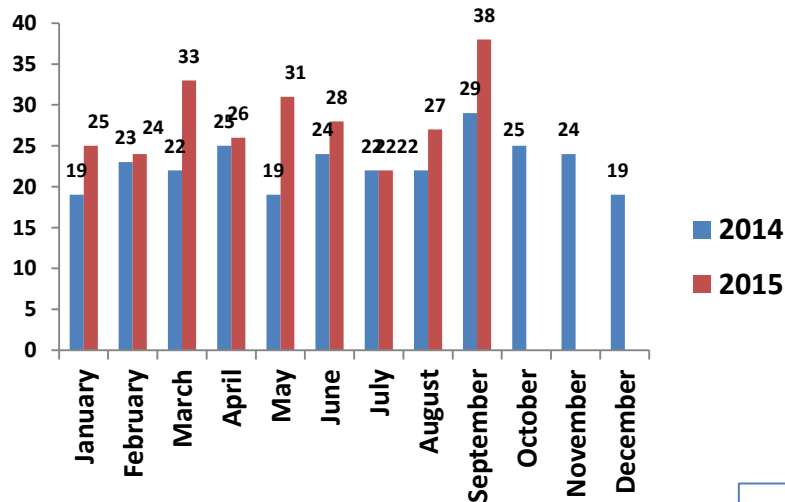
The top intersections afflicted by these incidents in the year to date continued to be 5<sup>th</sup> & Market and 16<sup>th</sup> & Mission.

- 8% of all incidents occurred at these two intersections in the year-to-date.

# Battery

## September 2015

# of Incidents – Battery



Month-on-Month	
Aug	Sept
27	38

Year-on-Year	
Sept '14	Sept '15
29	38

Year to Date	
2014	2015
205	254

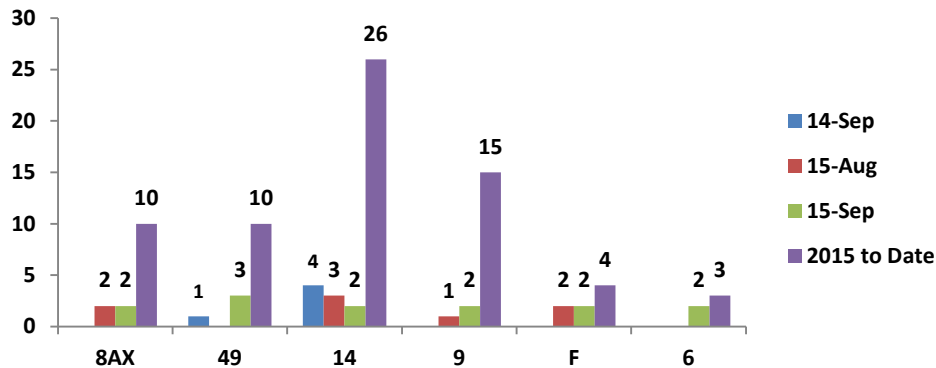
Battery incidents rose 41% compared to Aug., after increasing 23% in Aug. compared to July.

- Incidents rose 31% in Sept. '15 compared to Sept. '14.

# Battery by Line

## September 2015

Most Affected Lines – September 2015



The 49 overtook the KT as the line with the most battery incidents in September.

- Incidents on the 49 increased dramatically in Sept
- Incidents on the KT went from four in Aug. to one in Sept.
- A surge of incidents also occurred on the 6 compared to Aug.

The 14 continued to be the line with the most incidents in the year to date, followed by the KT.

- Incidents on this line fell by one compared to Aug.
- 10% of all battery incidents for the year to date occurred on the 14.

2015 (Jan-Sept)

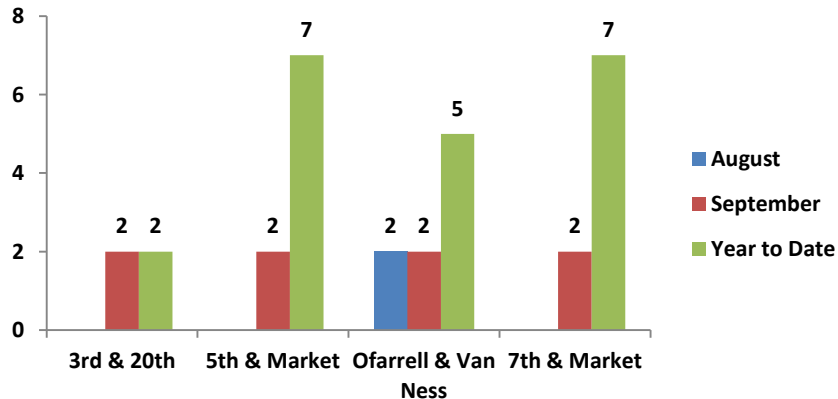
Line	# of Incidents
1	2
3	2
5	4
6	3
9	15
12	2
14	26
17	1
19	9
21	3
22	6
23	2
24	3
27	2
28	2
29	8
31	2
38	8
43	3
44	3
45	2
47	6
48	2
49	10
52	2
54	5
71	4
8AX	10
8BX	1
8X	4
9L	1
14L	4
14X	3
38AX	1
38L	1
F	4
J	5
KT	19
L	4
M	2
N	3

2014 (Jan-Sept)

Line	# of Incidents
1	2
2	1
5	3
6	1
9	7
14	18
18	1
19	8
21	1
22	7
24	2
27	5
29	5
30	3
31	3
33	2
38	9
43	2
44	3
47	8
48	1
49	7
54	1
66	1
71	2
91	2
8AX	1
108	2
8X	17
9L	2
14L	3
14X	1
38L	3
F	5
J	2
KT	9
L	3
M	3
N	2
Unknown	46

# Battery by Location September 2015

**Most Affected Intersections –  
September 2015**



**September 2015**

Location	#	Line
3 <sup>rd</sup> & 20 <sup>th</sup>	2	
5 <sup>th</sup> & Market	2	9; J
7 <sup>th</sup> & Market	2	6; 9
Ofarrell & Van Ness	2	49

**Year to Date**

Location	#	Line
3 <sup>rd</sup> & 20 <sup>th</sup>	2	
3 <sup>rd</sup> & Revere	2	KT
4 <sup>th</sup> & King	4	KT; 8AX; 9L
4 <sup>th</sup> & Mission	2	14; 14L
5 <sup>th</sup> & Market	7	8X; 8AX; 9L; 9; J
5 <sup>th</sup> & Mission	4	14; 14X; 8AX
7 <sup>th</sup> & Market	7	L; 6; 9
9 <sup>th</sup> & Judah	2	44
9 <sup>th</sup> & Kirkham	2	43; 6
9 <sup>th</sup> & Market	4	9; 21; F
9 <sup>th</sup> & Mission	2	14
11 <sup>th</sup> & Market	2	9
11 <sup>th</sup> & Mission	4	14
16 <sup>th</sup> & Bryant	3	22
16 <sup>th</sup> & Mission	8	22; 14
18 <sup>th</sup> & Church	2	J
18 <sup>th</sup> & Dolores	2	23
19 <sup>th</sup> & Holloway	2	28; M
21 <sup>st</sup> & Potrero	2	9
24 <sup>th</sup> & Mission	2	14; 49
30 <sup>th</sup> & Mission	2	14; 49
Broadway & Polk	2	19
Church & Market	2	J
Cortland & Mission	2	24
Geary & Larkin	2	38; 19
Geneva & Mission	6	14; 29; 8AX
Market & Mason	2	
Market & Montgomery	5	KT
Market & Van Ness	5	47; KT; 49
Mission & Silver	4	44; 14L; 14
Mission & Steuart	2	F
Mission & Van Ness	4	14; 49
Ofarrell & Van Ness	5	47; 49
Turk & Van Ness	2	49; 47
Ulloa & West Portal	2	M; L
Union & Van Ness	2	45; 47

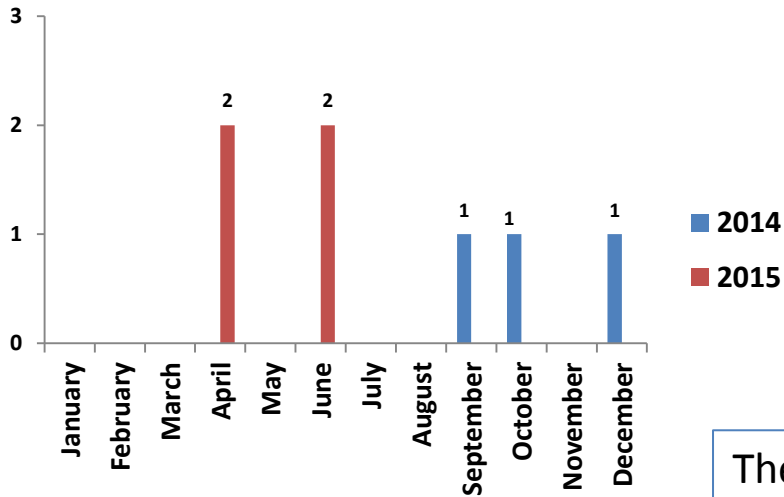
Battery incidents spiked in Sept. compared to Aug at the following intersections: 3<sup>rd</sup> & 20<sup>th</sup>, 5<sup>th</sup> & Market and 7<sup>th</sup> & Market

- The intersections with the most battery incidents in Aug. were Mission & Steuart and Ofarrell & Van Ness
- 16<sup>th</sup> & Mission was the intersection with the most battery incidents for the year-to-date, followed by 7<sup>th</sup> & Market and 5<sup>th</sup> & Market.
- Taken together, these three intersections experienced 9% of all battery incidents in the year-to-date.

# Burglary

## September 2015

# of Incidents – Burglary



Month-on-Month	
Aug	Sept
0	0

Year-on-Year	
Sept '14	Sept '15
1	0

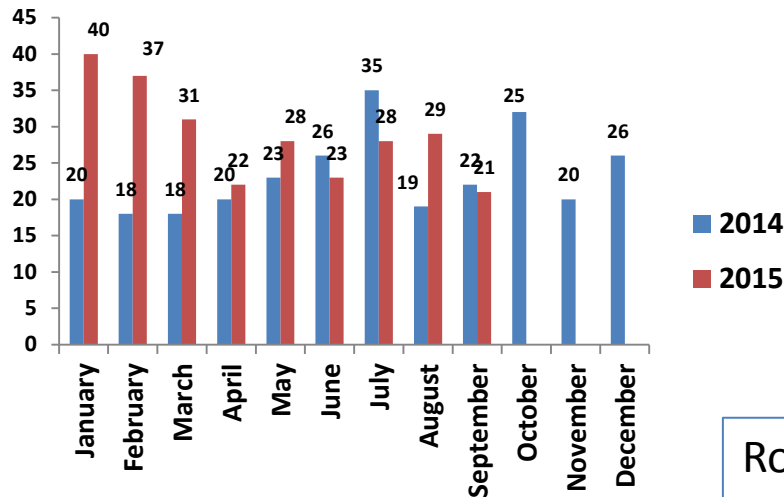
Year to Date	
2014	2015
1	4

There were zero burglary incidents in September.

# Robbery

## September 2015

# of Incidents – Robbery



Month-on-Month	
Aug	Sept
29	21

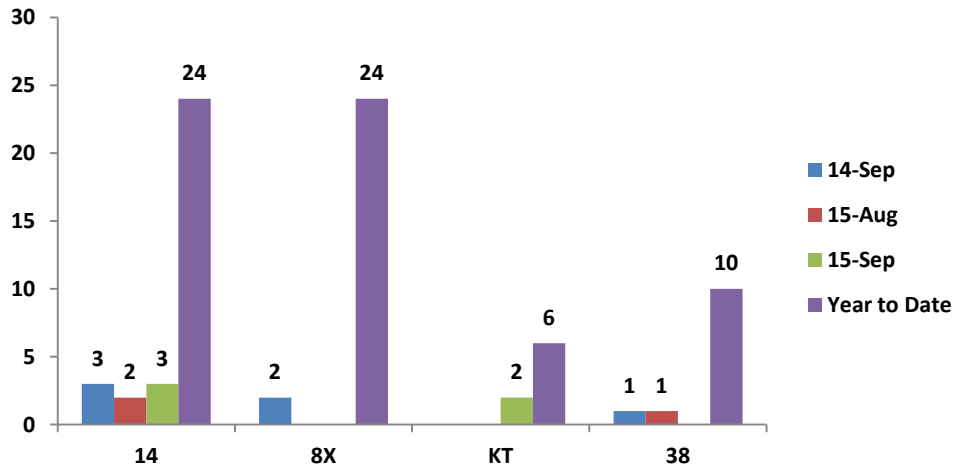
Year-on-Year	
Sept '14	Sept '15
22	21

Year to Date	
2014	2015
201	259

Robberies fell 28% compared to Aug. after rising 4% in Aug. compared to July.

- September has become the month with the fewest robbery incidents for the year-to-date. Robbery incidents fell 5% in Sept. '15 compared to Set. '14.

# Robbery by Line September 2015



The 14 and the KT were the lines with the most robbery incidents in Sept.

- Incidents on the 14 increased by one compared to Aug., while incidents on the KT went from zero in Aug. to two in Sept.
- The lines with the most robbery incidents in Aug. were the 14 and 43.

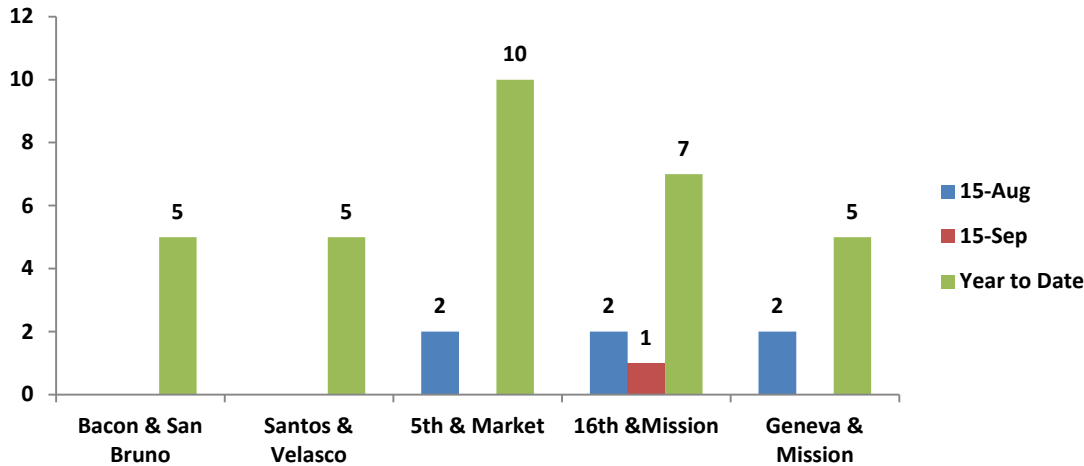
The 14 joined the 8X as the lines with the most robberies in the year-to-date.

- The 8X has not experienced a robbery incident since Apr.
- 19% of all robbery incidents in the year-to-date occurred on the 14 and 8X.

2015 (Jan-Sept)	
Line	# of Incidents
2	1
5	5
6	3
9	6
10	2
12	2
14	24
19	3
21	1
22	2
23	1
24	1
27	1
28	1
29	6
30	2
31	3
38	10
43	2
44	5
45	1
47	4
48	1
49	4
54	4
71	1
91	3
8AX	4
8BX	1
8X	24
9L	1
14L	2
38L	3
F	2
J	1
KT	6
L	2
N	2
T	1
Unknown	111

2014 (Jan-Sept)	
Line	# of Incidents
1	1
5	4
6	1
9	3
10	1
14	21
19	4
21	2
22	5
23	1
28	1
29	5
30	3
31	2
36	1
38	8
41	1
44	4
45	2
47	2
49	5
54	1
71	3
91	3
508	2
8X	17
14L	4
14X	1
F	2
J	1
KT	7
M	3
N	4
Unknown	76

# Robbery by Location September 2015



No intersection had more than one robbery incident in Sept.

- 5<sup>th</sup> & Market, 16<sup>th</sup> & Mission and Geneva & Mission were the intersections with the most robbery incidents in Aug.

5<sup>th</sup> & Market remained the intersection with the most robbery incidents in the year to date for the sixth consecutive month

- 4% of all robbery incidents in the year to date occurred at this intersection
- The only top intersection in the year-to-date that experienced a robbery incident in Sept. was 16<sup>th</sup> & Mission.

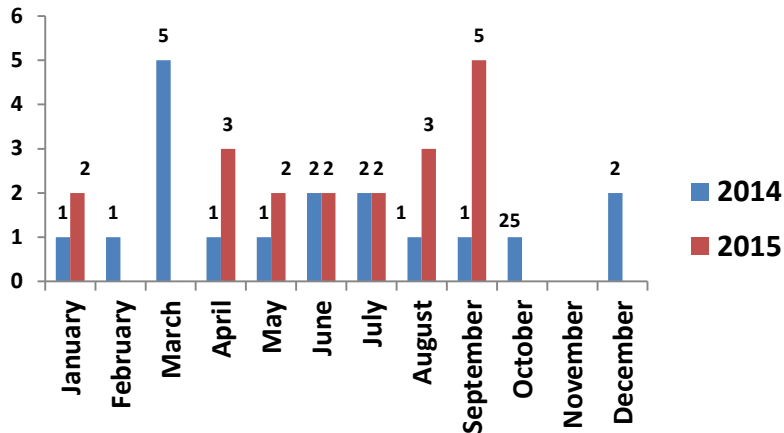
Year to Date		
Location	#	Line
3 <sup>rd</sup> & La Salle	2	KT
3 <sup>rd</sup> & Mission Rock	2	KT; T
3 <sup>rd</sup> & Palou	2	
4 <sup>th</sup> & Mission	2	14; 14L
5 <sup>th</sup> & Market	10	5; 71; 8X; 30
5 <sup>th</sup> & Mission	3	38L; 14
6 <sup>th</sup> & Market	4	8X
7 <sup>th</sup> & Market	3	F
9 <sup>th</sup> & Market	2	14
16 <sup>th</sup> & Mission	7	14
18 <sup>th</sup> & Castro	2	
22 <sup>nd</sup> & Mission	2	14; 14L
14 <sup>th</sup> & Mission	3	14
24 <sup>th</sup> & Mission	3	14
24 <sup>th</sup> & Potrero	2	10; 9
30 <sup>th</sup> & Mission	4	14
Bacon & San Bruno	5	54; 8X
Baker & Haight	2	6
Bosworth & Mission	2	14
Bush & Stockton	2	7X; 30
Cambridge & Silver	2	44
Carter & Geneva	2	8AX; 8X
Divisadero & Geary	2	
Eddy & Van Ness	2	31
Felton & San Bruno	2	8X; 9
Geary & Laguna	2	38
Geneva & Mission	5	8X; 43
Geneva & Santos	2	8X
Hahn & Sunnysdale	3	8X
Jones & Turk	2	31
Mansell & San Bruno	3	9
Market & Post	2	
Market & Powell	2	
Market & Van Ness	3	6; L; 47
Mcallister & Van Ness	3	44; 47
Mission & Persia	3	38L; 29; 14
Mission & Russia	2	14
O'farrell & Van Ness	2	38L
San Bruno & Silver	2	
Santos & Velsaco	5	8X; 9; 91
Sawyer & Sunnysdale	2	8X



# Threat of Violence

## September 2015

# of Incidents – Threat of Violence



Month-on-Month	
August	Sept.
3	5

Year-on-Year	
Sept '14	Sept '15
1	5

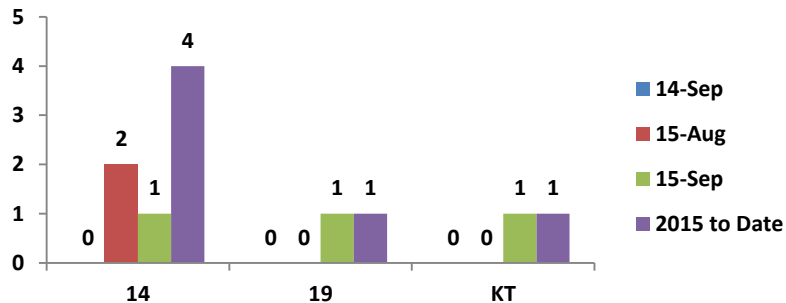
Year to Date	
2014	2015
15	19

Threat of violence incidents increased 40% compared to Aug.

# Threat of Violence by Line

## September 2015

**Most Affected Lines – September 2015**



No line experienced more than one threat of violence incident in Sept.  
 The 14 is the with the most threat of violence incidents in the year to date.

- 21% of all threat of violence incidents occurred on this line.

There were no overlapping intersections for threat of violence incidents in Sept. or for the year-to-date.

**Incidents by Line**

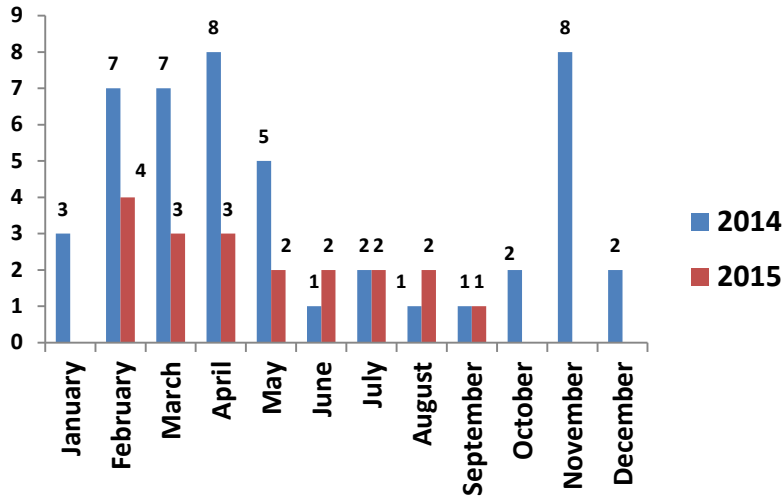
2015 (Jan-Sept)		2014 (Jan-Sept)	
Line	# of Incidents	Line	# of Incidents
14	4	14	3
19	1	23	1
22	1	44	1
38	1	8X	2
49	2	KT	1
51	1	L	2
8AX	1	Unknown	5
J	1		
KT	1		
M	1		
Unknown	3		

**Incidents by Location**

September 2015			Year to Date		
Location	#	Line	Location	#	Line
3 <sup>rd</sup> & Gilman	1	KT	2 <sup>nd</sup> & Mission	1	14
7 <sup>th</sup> & Folsom	1	19	3 <sup>rd</sup> & 20 <sup>th</sup>	1	22
20 <sup>th</sup> & Mission	1	14	11 <sup>th</sup> & Mission	1	14
Ashbury & Hayes	1		16 <sup>th</sup> & Mission	1	14
Innes & Hawes	1		8 <sup>th</sup> & Market	1	
			14 <sup>th</sup> & Geary	1	38
			15 <sup>th</sup> & Mission	1	49
			16 <sup>th</sup> & Mission	1	14
			Golden Gate & Mcallister	1	
			Market & Van Ness	1	
			Ocean & Phelan	1	8AX
			San Bruno & Silver	1	54
			Union & Van Ness	1	49
			30 <sup>th</sup> & San Jose	1	J
			Castro & Market	1	M
			3 <sup>rd</sup> & Gilman	1	KT
			7 <sup>th</sup> & Folsom	1	19
			20 <sup>th</sup> & Mission	1	14
			Ashbury & Hayes	1	

# Drugs\* (Possession & Sale of) September 2015

# of Incidents – Drugs



Month-on-Month	
Aug	Sept
2	1

Year-on-Year	
Sept '14	Sept '15
1	1

\*The 'drug' category includes possession and sale of narcotics paraphernalia, amphetamines, heroin, methadone, marijuana, methamphetamine, cocaine, and other controlled substances

Year to Date	
2014	2015
35	19

Drug incidents fell by one compared to Aug.

- There was one drug incident in both Sept. '15 and Sept. '14.

# Drugs by Line & Location

## September 2015

### Drugs by Line

2015 (Jan-Sept)	
Line	# of Incidents
22	1
F	1
Unknown	24

2014 (Jan-Sept)	
Line	# of Incidents
9	1
14	3
23	1
38	4
45	1
49	1
14L	1
F	1
N	1
Unknown	31

### Drugs by Location

Year to Date		
Location	#	Line
3 <sup>rd</sup> & Newcomb	1	
3 <sup>rd</sup> & Oakdale	1	
5 <sup>th</sup> & Market	1	
5 <sup>th</sup> & Mission	1	
7 <sup>th</sup> & Market	1	
16 <sup>th</sup> & Mission	1	
Church & Cumberland	1	
Ellis & Powell	1	
Embarcadero & Green	1	F
Fillmore & Geary	2	22
Grove & Hyde	1	
Haight & Laguna	1	
Larkin & Ofarrell	2	
Leavenworth & Ofarrell	1	
Market & Powell	1	
Ofarrell & Shannon	1	
Ofarrell & Taylor	1	

The 22 and F remained the only lines that experienced drug incidents in 2015 to date.

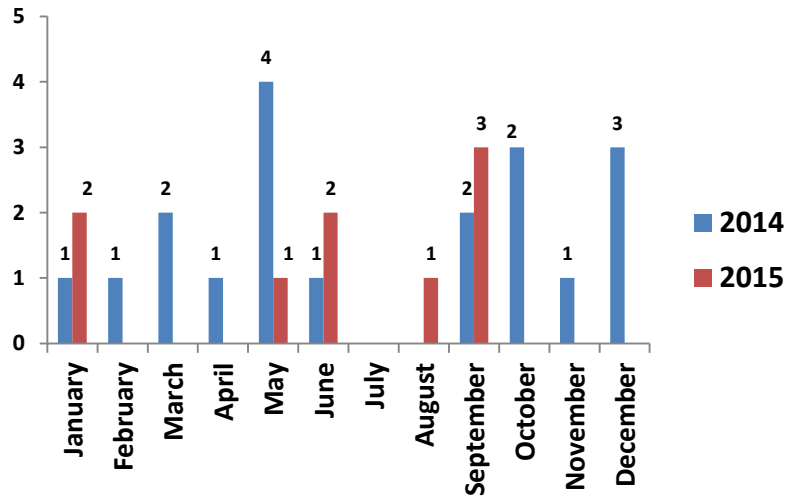
The drug incident in Sept. occurred at Haight & Laguna

- The intersections with the most drug incidents for the year to date remained Fillmore & Geary and Larkin & Ofarrell

# Trespassing / Loitering

## September 2015

# of Incidents



Month-on-Month	
August	Sept
1	3

Year-on-Year	
Sept '14	Sept '15
2	3

Year to Date	
2014	2015
12	9

Trespassing / loitering incidents rose by two compared to Aug., after rising by one in Aug. compared to July.

# Trespassing by Line & Location

## September 2015

### Trespassing by Line

2015 (Jan-Sept)		2014 (Jan-Sept)	
Line	# of Incidents	Line	# of Incidents
45	1		
F	1		
Unknown	7		

### Trespassing by Location

Year to Date		
Location	#	Line
18 <sup>th</sup> & Church	1	
Carl & Cole	1	
Embarcadero & Folsom	1	
Fillmore & Union	1	45
Geneva & San Jose	1	
Indiana & Tubbs	1	
Market & Ofarrell	1	F
Scott Garage	1	
Van Ness Station	1	

There were no overlapping lines for trespassing incidents for the year-to-date

- No trespassing incidents in Sept. occurred on a Muni line.
- No trespassing incidents occurred on a Muni line between Jan. and Sept. 2014.

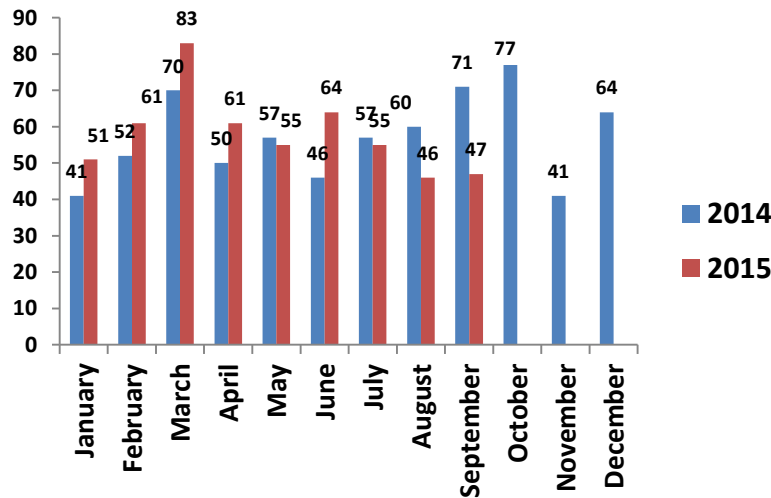
There were no overlapping intersections for trespassing for the year-to-date.

- The September trespassing incidents occurred at the following intersections: Scot Garage, 18<sup>th</sup> & Church and Geneva & San Jose.

# Theft

## September 2015

# of Incidents – Theft



Month-on-Month	
Aug	Sept
46	47

Theft Incidents	
Sept '14	Sept '15
71	47

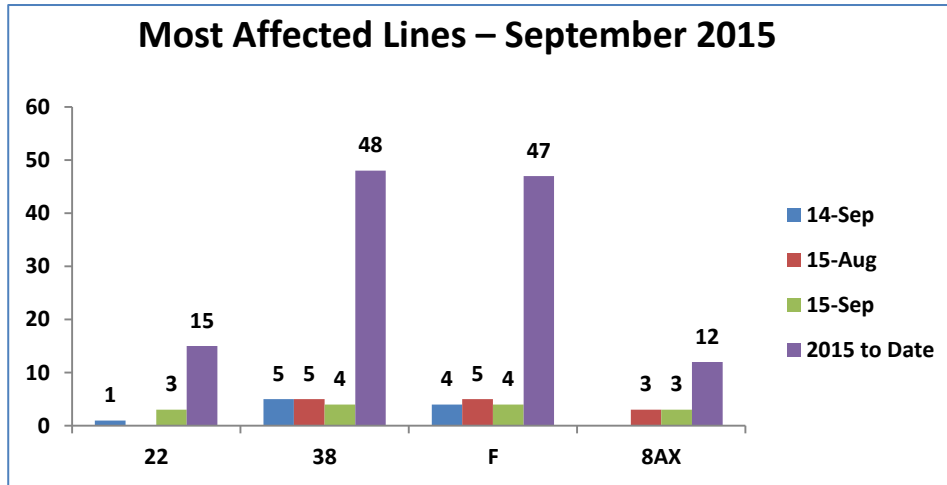
Year to Date	
2014	2015
504	523

Theft incidents rose by one in Sept. compared to Aug., after incidents dropped 16% in Aug. compared to July.

- Aug. had the fewest theft incidents for the year-to-date, followed by Sept. Theft incidents fell 34% in Sept. '15 compared to Sept. '14.

# Theft by Line September 2015

## Most Affected Lines – September 2015



The 38 and F replaced the 30 as the line with the most theft incidents in Sept.

- Incidents on the F fell by one compared to Aug., after dropping 55% in Aug. compared to July
- Incidents on the 38 also fell by one compared to Aug., after rising from 0 in July to five in Aug.
- Theft incidents on the 22 spiked in Sept. compared to Aug.
- Incidents on the 30 dropped from 10 in Aug. to one in Sept.

The 38 was the line with the most theft incidents for the year-to-date, followed by the F and the 30

### 2015 (Jan-Sept)

Line	# of Incidents
1	5
3	1
5	17
6	5
8	4
9	10
10	2
12	3
14	13
14L	2
18	1
19	12
21	1
22	15
23	1
24	7
27	6
28	4
29	6
30	41
31	7
33	1
38	48
43	3
44	5
45	9
48	1
47	14
49	22
54	4
71	4
91	2
108	1
8X	23
8AX	12
8BX	2
9L	1
38L	19
71L	1
F	47
J	3
KT	6
L	3
M	2
N	7

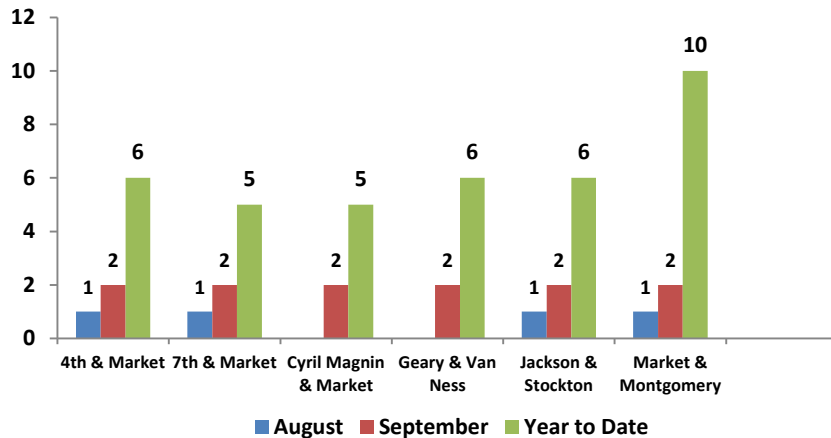
### 2014 (Jan-Sept)

Line	# of Incidents
1	2
2	1
5	20
6	5
9	13
14	17
17	2
19	11
21	3
22	14
24	2
27	9
28	2
29	4
30	35
31	12
33	3
36	1
37	1
38	35
43	2
44	12
45	7
47	18
49	18
54	1
56	1
71	11
91	5
14L	5
30X	1
38L	21
71L	1
8X	25
9L	7
F	43
J	5
KT	9
L	10
M	3
N	4
Unknown	108



# Theft by Location September 2015

## Most Affected Intersections – September 2015



None of the intersections with the most theft incidents in Aug. and July – Pacific & Stockton, 16<sup>th</sup> & Mission and Beach & Embarcadero – had more than one theft incident in Sept.

- Incidents at Cyril Magnin & Market and Geary & Van Ness spiked compared to Aug. 5<sup>th</sup> & Market and Market & Van Ness remained the intersections with the first and second most theft incidents in the year-to-date for the third consecutive month.

## September 2015

Location	#	Line
4 <sup>th</sup> & Market	2	8AX, L
7 <sup>th</sup> & Market	2	9; F
Cyril Magnin & Market	2	8AX
Geary & Van Ness	2	38
Jackson & Stockton	2	30
Market & Montgomery	2	31

## Year to Date

Location	#	Line
1 <sup>st</sup> & Market	2	F
2 <sup>nd</sup> & Market	2	38L
2 <sup>nd</sup> & Mission	2	
3 <sup>rd</sup> & Market	5	F; 38L; 45
4 <sup>th</sup> & King	2	KT
4 <sup>th</sup> & Market	6	F; 8X; 47; 8AX; L
4 <sup>th</sup> & Mission	3	
5 <sup>th</sup> & Market	16	5; 6; 27; 8; N
5 <sup>th</sup> & Mission	2	8AX; 8
6 <sup>th</sup> & Geary	2	38
6 <sup>th</sup> & Market	2	6
7 <sup>th</sup> & Market	5	N; 71; 19; 9; F
8 <sup>th</sup> & Market	4	9; 6
9 <sup>th</sup> & Market	2	6
10 <sup>th</sup> & Market	2	19
11 <sup>th</sup> & Folsom	2	
15 <sup>th</sup> & Harrison	3	
16 <sup>th</sup> & Geary	2	38L
16 <sup>th</sup> & Mission	6	33; 14; 49
19 <sup>th</sup> & Holloway	3	38
20 <sup>th</sup> & Geary	2	38L
22 <sup>nd</sup> & Mission	2	14; 49
24 <sup>th</sup> & Mission	5	12; 14; 49
24 <sup>th</sup> & Potrero	3	9
Arguello & Geary	3	38
Bacon & San Bruno	2	9
Bay & Embarcadero	2	F
Beach & Embarcadero	8	F
Bush & Powell	2	47
California & Sansome	2	
California & Van Ness	3	1; 47; 49
Castro & Market	3	14; 24; L
Chestnut & Fillmore	2	43
Church & Duboce	2	22

See next slide for more intersections

# Theft by Location Continued

## September 2015

### Year to Date (Cont.)

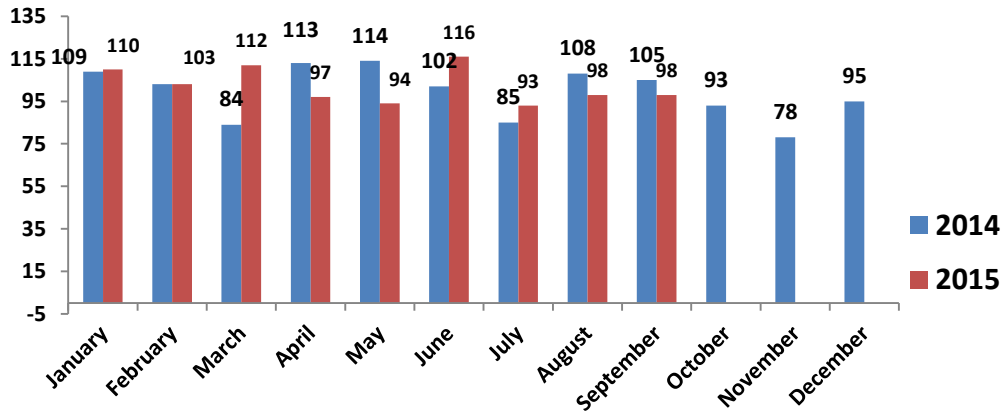
Location	#	Line
Church & Market	4	22
Clay & Stockton	6	8X; 30; 45
Columbus & Filbert	2	8X
Columbus & Stockton	2	30; 8X
Cyril Magnin & Market	5	8X; F; 8AX
Divisadero & Eddy	3	31; 24
Divisadero & Geary	2	38L; 24
Divisadero & Mcallister	3	5
Eddy & Van Ness	6	47; 49
Embarcadero & Folsom	4	F; L
Embarcadero & Market	11	F; N
Evans & Middle Point	2	19
Fillmore & Geary	9	38; 22
Fillmore & Mcallister	6	5; 22
Fillmore & Oak	2	22
Front & Market	2	F; 31
Geary & Kearny	4	38L; 30
Francisco & Powell	2	
Geary & Laguna	3	38L; 38
Geary & Mason	3	8X; 38
Geary & Masonic	4	38L; 38
Geary & Powell	7	38
Geary & Scott	3	38
Geary & Webster	3	38
Geary & Van Ness	6	38L; 38; 49
Geneva & Mission	4	14; 14L
Geneva & San Jose	7	8X
Green & Stockton	3	30
Jackson & Stockton	6	30; 8AX
Jackson & Van Ness	3	47; 49
Jones & Beach	3	F
Kearny & Clay	2	8X; 1
Haight & Masonic	2	71; 71L
Howard & Main	3	38L; 5
Jones & Ofarrell	2	38
Kearny & Market	6	F; 30; 38
Lombard & Powell	2	8X

### Year to Date (Cont.)

Location	#	Line
Market & Montgomery	10	31; 49; 6; F; 5
Market & Van Ness	14	47; 49; J; 19; M
Mcallister & Van Ness	5	5; 49
Mission & Persia	3	29
Ocean & Powell	2	38L; 38
Ofarrell & Van Ness	2	49; 47
Pacific & Stockton	11	30; 12; 8X; 45; 8AX
Santos & Brookdale	3	8X; 8BX
Sacramento & Stockton	10	30; 45
San Bruno & Silver	2	9L; 44
Santos & Velasco	2	91; 8X
Stockton & Sutter	10	30; 45; 8X
Stockton & Washington	2	30
Ulloa & West Portal	2	M; 49

# Fighting September 2015

# of Incidents – Fighting\*



\*Fighting incidents recorded for August-September 2014 do not include data from the OCC report, and therefore, is under-reported

Fighting incidents were the same in Aug. and Sept., after rising 5% in Aug. compared to July.

- July had the fewest number of fighting incidents in the year-to-date.

Compared to Sep. '14, incidents fell 7%.

## Month-on-Month

Aug	Sept
98	98

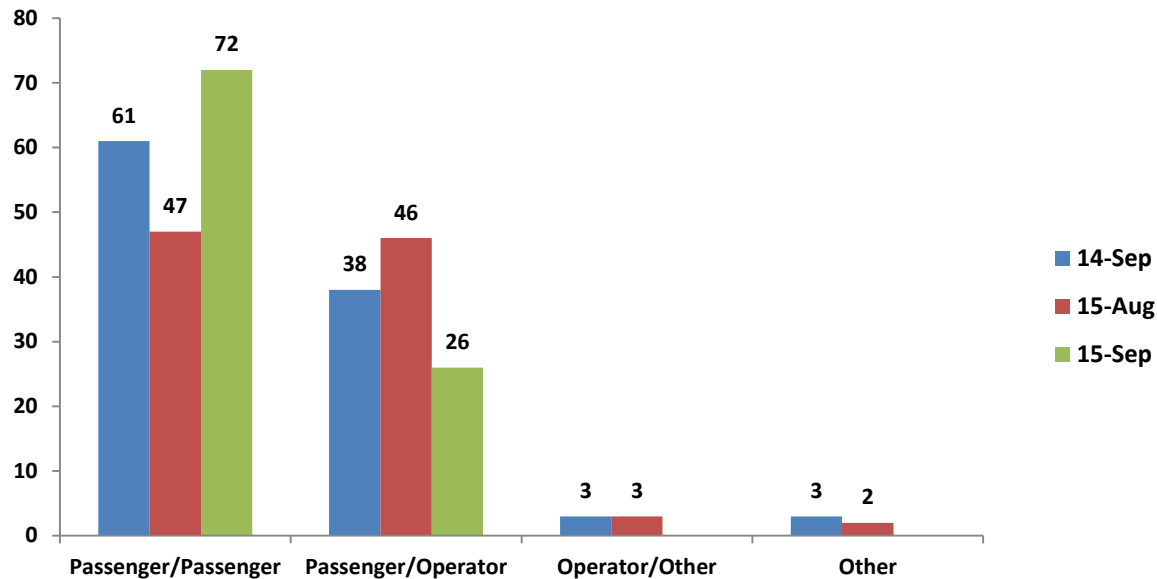
## Year-on-Year

Sept '14	Sept '15
105	98

## Year to Date

2014	2015
923	921

# Fighting by Type September 2015

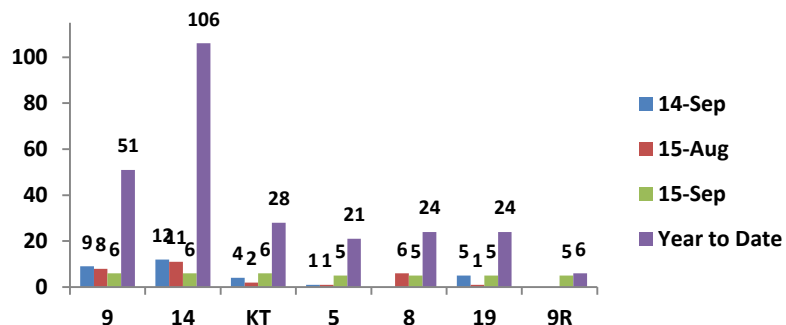


Passenger/Passenger physical altercations continued to be the most frequent type of fighting

- 73% of all fighting incidents were Passenger/Passenger incidents in Sept., compared to 48% in Aug.
  - Passenger/Passenger incidents increased 53% compared to Aug., after falling 18% in Aug. compared to July.
- Passenger/Operator incidents fell 43% compared to Aug., after rising 44% in Aug. compared to July

# Fighting by Line September 2015

## Most Affected Lines – September 2015



The lines with the most fighting incidents in Sept. were the 9, 14 and KT.

- Incidents on the 9 and 14 fell compared to Aug., dropping 25% and 45%, respectively, after rising 60% and 11%, respectively, in Aug. compared to July.

- Incidents on the KT tripled compared to Aug.

Incidents on the 5, 19 and 9R spiked in Sept.

The 14 remained the line with the most fighting incidents in the year-to-date.

- 12% of all fighting incidents for the year to date occurred on the 14.

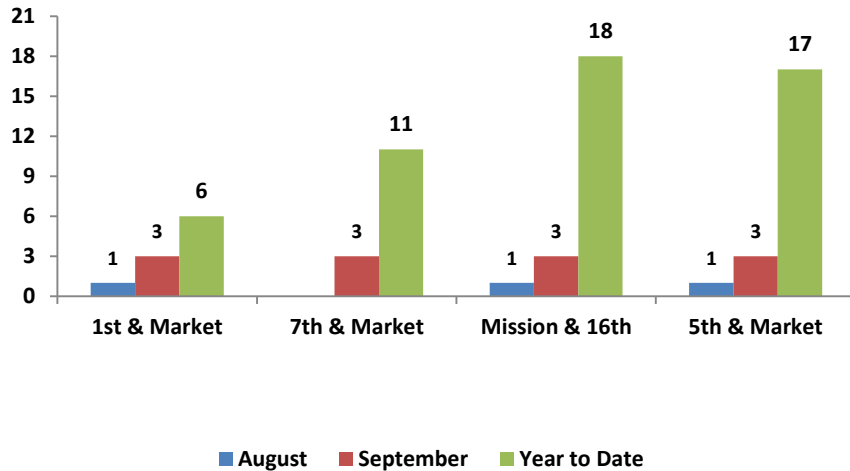
2015	
Line	# of Incidents
1	10
2	8
3	1
5	21
6	21
7	8
8	24
9	51
10	2
12	4
14	106
17	1
18	1
19	24
21	6
22	35
23	4
24	10
25	2
27	16
28	9
29	15
30	11
31	12
33	6
35	2
36	1
38	32
41	1
43	15
44	6
45	6
47	20
48	8
49	39
52	3
54	17
55	1
56	1
59	3
60	10
61	2
67	1
71	8

2015 (Cont.)	
Line	# of Incidents
90	3
91	16
94	1
97	1
98	1
108	3
14L	9
14R	14
14X	2
38L	1
38R	6
16X	1
30AX	1
8BX	1
8X	20
9L	6
9R	6
F	31
J	5
K	3
KT	28
L	21
M	9
N	17
T	4
Unknown	21

2014	
Line	# of Incidents
1	8
2	3
3	1
5	42
6	16
9	53
10	4
12	1
14	106
18	2
19	28
21	4
22	38
23	4
24	11
27	12
28	8
29	20
30	20
31	18
33	11
35	1
38	33
39	1
41	1
43	14
44	16
45	3
47	28
48	13
49	47
54	23
59	3
60	4
61	6
66	1
67	1
71	19
90	3
91	24
105	1
108	7
508	8
14L	23
16X	1
38L	13
38X	1
5L	1
8AX	1
8X	53
9L	13
F	27
J	12
KT	28
L	19
M	20
N	22

# Fighting by Location September 2015

## Most Affected Intersections – September 2015



None of the intersections with the most fighting incidents in Sept. were the intersections with the most fighting incidents in Aug. (24<sup>th</sup> & Potrero, Eddy & Van Ness and Geary & Presidio).

- Incidents at 5<sup>th</sup> & Market fell 83% compared to July
- 16<sup>th</sup> & Mission remained the intersections with the most fighting incidents in the year-to-date for the second consecutive month.

### September 2015

Location	#	Line
1 <sup>st</sup> & Market	3	2; 9R; 21
5 <sup>th</sup> & Market	3	27; K; 9
6 <sup>th</sup> & Market	2	9; 9R
7 <sup>th</sup> & Market	3	6; 9R
7 <sup>th</sup> & Mission	2	14
16 <sup>th</sup> & Mission	3	49; 33; 14R
Church Station	2	M; L
Grove & Van Ness	2	47
San Bruno & Paul	2	29
Stockton & Pacific	2	30; 8

### 2015 Year to Date

Location	#	Line
3 <sup>rd</sup> & 23 <sup>rd</sup>	2	KT; T
11 <sup>th</sup> & Market	4	9
11 <sup>th</sup> & Harrison	3	9
1 <sup>st</sup> & Market	6	2; 9R; 21; F; 5
2 <sup>nd</sup> & Market	2	9; F
2 <sup>nd</sup> & Mission	3	10; 14; 14R
24 <sup>th</sup> & Mission	2	48
3 <sup>rd</sup> & Evans	2	K; 19
3 <sup>rd</sup> & Howard	2	8
3 <sup>rd</sup> & Kirkwood	2	91; KT
3 <sup>rd</sup> & Market	5	30; 6; 38R; 7
3 <sup>rd</sup> & Palou	6	KT; 24; 54
3 <sup>rd</sup> & Revere	2	KT
3 <sup>rd</sup> & Williams	2	KT; 54
4 <sup>th</sup> & Berry	2	KT
4 <sup>th</sup> & King	5	KT; T
4 <sup>th</sup> & Market	3	G; F
4 <sup>th</sup> & Mission	2	14
5 <sup>th</sup> & Folsom	2	27
5 <sup>th</sup> & Harrison	3	27; 8; 47
5 <sup>th</sup> & Howard	5	27; 8X; 30; 8
5 <sup>th</sup> & Market	17	8X; 45; 6; 45; 27; 9; 8; 9R; F; KT
5 <sup>th</sup> & Mission	6	27; 14; 8X; 14X; 8
6 <sup>th</sup> & Bryant	5	27; 8BX; 14X; 8
6 <sup>th</sup> & Market	7	6; F; 21; 5; 9R
7 <sup>th</sup> & California	2	44
7 <sup>th</sup> & Irving	2	N; 7
7 <sup>th</sup> & Market	11	21; 9; 6; 98; 9R
7 <sup>th</sup> & Mission	5	14
8 <sup>th</sup> & Market	2	19; F

See next slide for more intersections

# Fighting by Location Continued

## September 2015

### 2015 Year to Date

Location	#	Line
8 <sup>th</sup> & Mission	3	14; 14R; 19
9 <sup>th</sup> & Judah	2	43; 44
9 <sup>th</sup> & Kirkham	2	6; 43
9 <sup>th</sup> & Market	7	6; 9; F; 21
11 <sup>th</sup> & Folsom	2	9
11 <sup>th</sup> & Harrison	5	9; 47; 27
11 <sup>th</sup> & Market	6	9; 9L; 7
11 <sup>th</sup> & Mission	6	14; 14L; 14R
16 <sup>th</sup> & Rhode Island	2	19
16 <sup>th</sup> & Shotwell	2	22
16 <sup>th</sup> & Valencia	2	22
17 <sup>th</sup> & Castro	3	F
17 <sup>th</sup> & Mission	2	14
17 <sup>th</sup> & Taraval	2	L
18 <sup>th</sup> & Castro	2	24; 33
19 <sup>th</sup> & Holloway	3	29; 91
19 <sup>th</sup> & Judah	3	N; 28
19 <sup>th</sup> & Mission	5	14; 49
19 <sup>th</sup> & Taraval	2	28; L
20 <sup>th</sup> & 3 <sup>rd</sup>	4	22
30 <sup>th</sup> & Mission	13	14; 36; 14R; 49
46 <sup>th</sup> & Wawona	3	L; 19
48 <sup>th</sup> & Point Lobos	3	38; 30AX
Arleta & San Bruno	3	8X; 8; 9; 9R
Bacon & San Bruno	5	8; 8X; 9
Baker & Beach	2	29
Baker & Haight	2	6
Bay & Taylor	2	59
Bay & Van Ness	2	30; 47
Bayshore & Arleta	4	91; 8X; 90; 8
Bayshore & Cortland	3	9

### 2015 Year to Date

Location	#	Line
Bayshore & Oakdale	3	9; 9L; 23
Bayshore & Visitacion	3	9L; 9R
Beach & Hyde	3	60
Beach & Polk	2	19
Bosworth & Mission	2	14; 49
Bryant & 16 <sup>th</sup>	2	27; 22
California & Polk	2	19
California & Presidio	3	2; 28
Castro & Market	3	35; L
Castro Station	5	M; L; KT
Chestnut & Van Ness	4	30; 91; 47
Chestnut & Fillmore	4	43; 30; 22
Church & 16 <sup>th</sup>	2	22
Church & Market	3	J; N; 22
Church Station	7	T; L; M
Civic Center Station	3	KT; K; M
Columbus & Union	2	45; 8
Cortland & Folsom	3	24
Cortland & Mission	2	24; 14
Daly City BART	5	28; 14L; 54
Don Chee Way	2	F
Divisadero & Haight	2	71; 7
Duboce & Church	3	N; 22
Eddy & Fillmore	5	22; 31
Eddy & Laguna	3	31
Eddy & Van Ness	7	31; 49; 47; 90
Embarcadero Station	8	KT; J
Excelsior & Mission	4	49; 14; 52
Ferry Terminal	5	31; L; 14; F
Fillmore & Geary	7	22; 38L; 38
Fillmore & Hayes	5	22; 21; 22
Fillmore & Mcallister	4	5
Fillmore & Ofarrell	3	22
Forest Hill Station	2	44; 43
Front & Market	2	2; 5
Geary & Divisadero	4	38; 38R
Geary & Hyde	2	38
Geary & Leavenworth	2	27; 38
Geary & Park Presidio	5	38; 91; 38R

### 2015 Year to Date

Location	#	Line
Geneva & Carter	3	8X; 8
Geneva & Naples	3	43; 8X; 8
Geneva & Prague	4	8X; 43
Geneva & Mission	5	29; 14
Geneva & San Jose	2	54; 8
Geneva & Santos	2	8X; 91
Gough & Mcallister	2	5
Haight & Cole	2	43; 33
Hudson & Newhall	2	54
Hyde & Turk	2	19; 31
Italy & Mission	4	29; 14R; 14
Judah & La Playa	3	N
Kearny & Market	2	8; 91
Larkin & Turk	2	31; 19
Lombard & Pierce	3	43; 28
Lowell & Mission	2	14
Market & Van Ness	10	71; 6; 49; 90; F; N
Mcallister & Pierce	2	5
Mcallister & Van Ness	7	5; 6; 47; 19
McLaren & Sunnydale	2	9
Mission & 6 <sup>th</sup>	5	14; 14L; 14R
Mission & 9 <sup>th</sup>	2	14
Mission & 12 <sup>th</sup>	2	49; 14
Mission & 13 <sup>th</sup>	2	49; 14
Mission & 14 <sup>th</sup>	4	14; 49
Mission & 16 <sup>th</sup>	18	14; 49; 14L; 14R; 22; 33
Mission & 18 <sup>th</sup>	4	49; 14; 14R
Mission & 20 <sup>th</sup>	4	14L; 14; 14R
Mission & 21 <sup>st</sup>	3	14; 49
Mission & 23 <sup>rd</sup>	4	14
Mission & 24 <sup>th</sup>	15	14; 14L; 48; 49; 12
Mission & 26 <sup>th</sup>	2	14
Mission & Onondaga	3	14
Mission & Persia	2	14
Mission & Randall	2	49; 14R

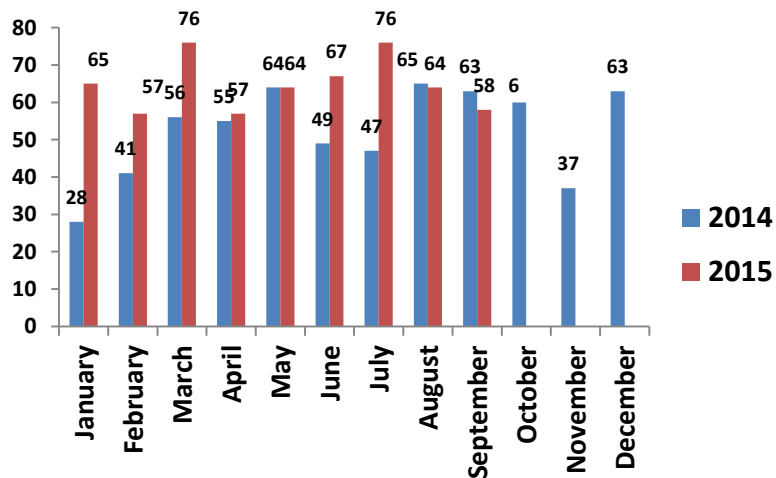
### 2015 Year to Date

Location	#	Line
Mission & Richland	2	14L
Mission & San Jose	6	14
Mission & Valencia	4	14
Mission & Van Ness	6	14; 49
Montgomery Station	4	KT
North Point & Van Ness	2	30; 49
Ofarrell & Van Ness	4	38; 49
Pacific & Stockton	4	30; 8
Palou & Phelps	2	24; 23
Paul & San Bruno	2	29
Phelan Loop	2	8
Polk & Washington	1	19
Post & Van Ness	2	47
Potrero & 16 <sup>th</sup>	9	22; 9; 9R
Potrero & 21 <sup>st</sup>	3	9
Potrero & 21 <sup>st</sup>	4	9
Potrero & 24 <sup>th</sup>	9	9; 9R; 8; 48
Powell & Market	4	60; 9R
Powell & Post	3	59; 60
Powell Station	4	M; KT
Sacramento & Kearny	2	1
San Bruno & Felton	2	9
San Bruno & Silver	2	44; 9L
Stockton & Sutter	4	8X; 8; 30
Transbay Terminal	10	38; 108; 5; 7; 25
Van Ness & Geary	3	38; 47
Van Ness & Grove	5	47; 49
Van Ness & Turk	3	47; 49
Van Ness Station	4	KT
West Portal & Ulloa	5	91; 48; N
West Portal Station	6	L; M; 91; KT

# Vandalism

## September 2015

# of Incidents\*



Month-on-Month	
Aug	Sept
64	58

Year-on-Year	
Sept '14	Sept '15
63	58

Year to Date	
2014	2015
468	584

\*Includes possession of graffiti tools

Vandalism incidents fell 9% compared to Aug., after dropping 16% in Aug. compared to July.

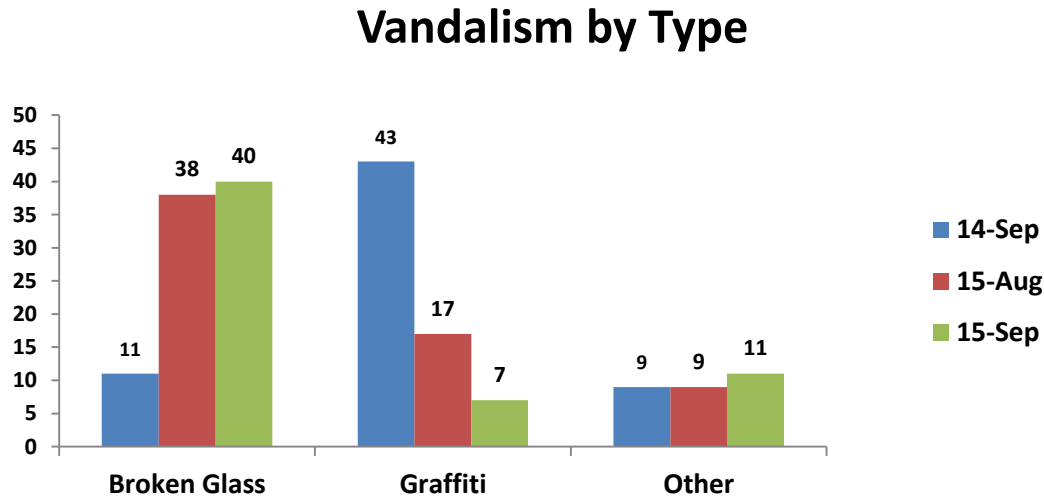
- February and April had the fewest vandalism incidents for the year-to-date.

Compared to Sep. '14, vandalism incidents fell 7%.



# Vandalism by Type

## September 2015



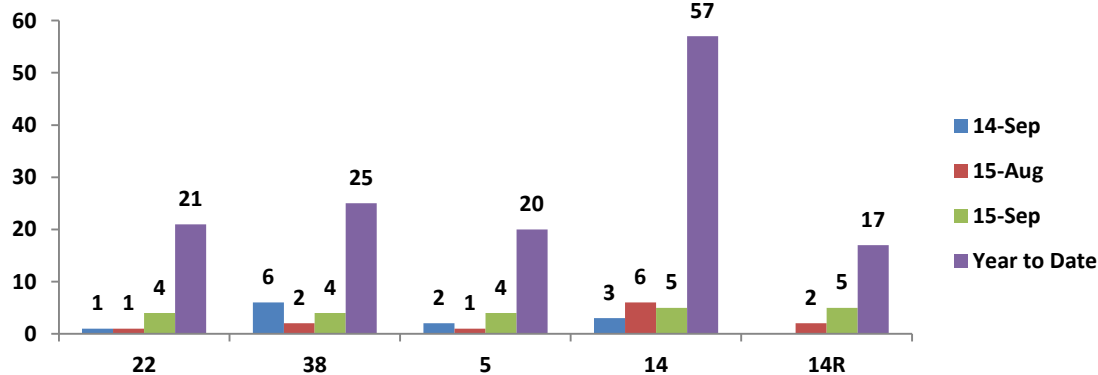
Broken glass remained the most common form of vandalism – 69% of all vandalism incidents in Sept. were broken glass incidents; in Aug., 59% of all vandalism incidents were broken glass.

- Broken glass incidents rose 5% compared to Aug., after dropping 21% in Aug. compared to July. Graffiti incidents fell 59% compared to Aug., after more than doubling in Aug. compared to July.

# Vandalism by Line

## September 2015

### Most Affected Lines – September 2015



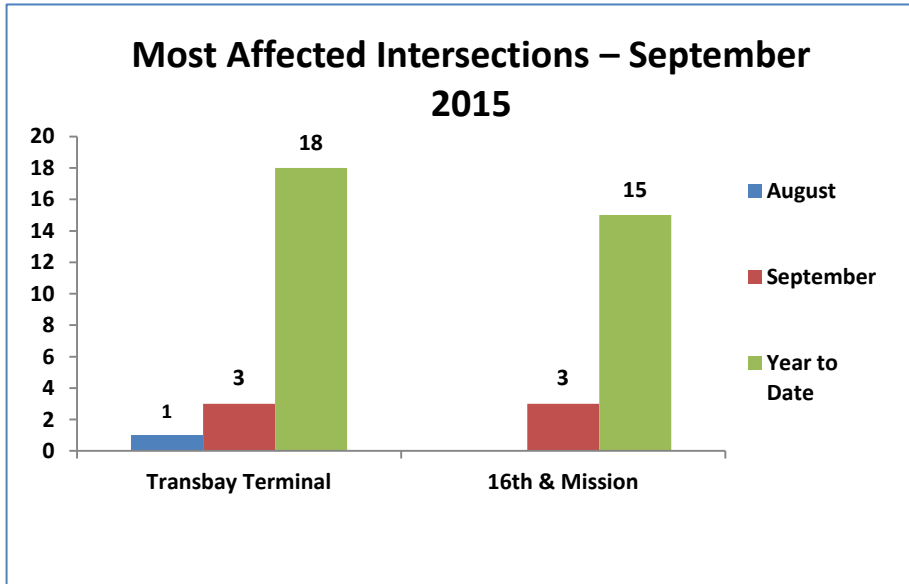
The 14 and 14R overtook the 49 as the line(s) with the most vandalism incidents in Sept.

- 17% of all vandalism incidents in Sept. occurred on these two lines.
- Incidents on the 14 fell by one compared to Aug., while incidents on the 14R more than doubled in Sept. compared to Aug.
- 29% of all vandalism incidents for the year-to-date on the 14R occurred in Sept.
- Vandalism incidents on the 22 and 5 both increased dramatically in Sept. The lines with the most vandalism incidents for the year-to-date were the 14 followed by the 49 and the 9
- Incidents on the 9 increased by one in Sept. compared to Aug.
- Incidents on the 49 dropped significantly compared to Aug. – falling from eight incidents in Aug. to three incidents in Sept.

2015 (Jan-September)		2015 Continued		2014 (Jan-September)	
Line	# of Incidents	Line	# of Incidents	Line	# of Incidents
1	2	8AX	3	1	5
2	1	8BX	3	6	5
3	1	8X	19	5	24
5	20	83X		6	5
6	6	9R	2	9	30
7	6	98X	1	12	2
8	15	F	17	14	43
9	29	J	4	18	1
10	3	KT	16	19	8
12	3	L	4	21	7
14	57	M	4	22	16
17	1	N	18	23	15
18	2	Unknown	46	24	8
19	10			27	3
21	5			28	10
22	21			29	21
23	6			30	11
24	10			31	10
25	2			33	7
27	8			37	1
28	12			38	30
29	9			41	1
30	12			43	4
31	8			44	8
33	8			45	4
36	3			47	6
37	1			48	5
38	25			49	32
41	1			54	13
43	13			71	13
44	7			90	5
45	8			91	5
47	11			94	1
48	7			508	1
49	33			8X	31
52	1			5L	2
54	26			9L	14
56	1			14L	14
61	1			14X	1
67	2			38L	31
71	11			F	18
90	2			KT	1
91	2			L	2
108	1			M	2
508	1			N	3
5L	1			S	1
5R	2				
14L	11				
14R	17				
14X	1				
38B	3				
38L	6				
38R	9				

# Vandalism by Location

## September 2015



September 2015		
Location	#	Line
15 <sup>th</sup> & Market	2	F; 91
16 <sup>th</sup> & Mission	3	22; 14R; 14
24 <sup>th</sup> & Mission	2	12; 14R
Ferry Terminal	2	6; 14
Transbay Terminal	3	38; 5

Year to Date		
Location	#	Line
2 <sup>nd</sup> & Market	5	9; 10
3 <sup>rd</sup> & 20 <sup>th</sup>	4	22
3 <sup>rd</sup> & Hudson	3	44; 54
4 <sup>th</sup> & Townsend	6	30; 47; 45; N
4 <sup>th</sup> & King	3	KT; N
4 <sup>th</sup> & Market	3	9
5 <sup>th</sup> & Market	8	45; 27; 30; F; 5; 5R
5 <sup>th</sup> & Mission	5	27; 14; 14R; 8
5 <sup>th</sup> & King	3	N
6 <sup>th</sup> & King	3	J; N
6 <sup>th</sup> & Market	4	71; F; 9
7 <sup>th</sup> & Market	6	9; 21; F; N
9 <sup>th</sup> & Judah	2	N
9 <sup>th</sup> & Mission	3	14; 14L
11 <sup>th</sup> & Market	2	9; 14
11 <sup>th</sup> & Mission	8	14; 14L; 47; 14R
15 <sup>th</sup> & Market	2	F; 91
19 <sup>th</sup> & Irving	2	28
48 <sup>th</sup> & Ortega	3	7; 71
Bayshore & Silver	2	9; 90
Bryant & Embarcadero	2	
Cabrillo & La Playa	2	5; 31
Chestnut & Fillmore	3	22; 43
Cyril Magnin & Market	3	8; 8AX; 8X
Daly City BART	3	28; 54
Divisadero & Geary	2	24; 38R
Dormitory & Kiska	3	54
Drum & Market	3	F; 31; L
Earl & Kirkwood	2	54;
Embarcadero Station	3	J; M
Galvez & Horn	2	19
Geary & Fillmore	2	38; 22
Geary & Leavenworth	2	38; 38R

The Transbay Terminal and 16<sup>th</sup> & Mission replaced Mission & San Jose and Phelan Loop as the intersections with the most vandalism incidents in Aug.

The Transbay Terminal remained the intersection with the most vandalism incidents for the year-to-date for the fourth consecutive month .

- 3% of all incidents from Jan. to Sept. occurred at this intersection.

See next slide for more intersections

# Vandalism by Location Continued

## September 2015

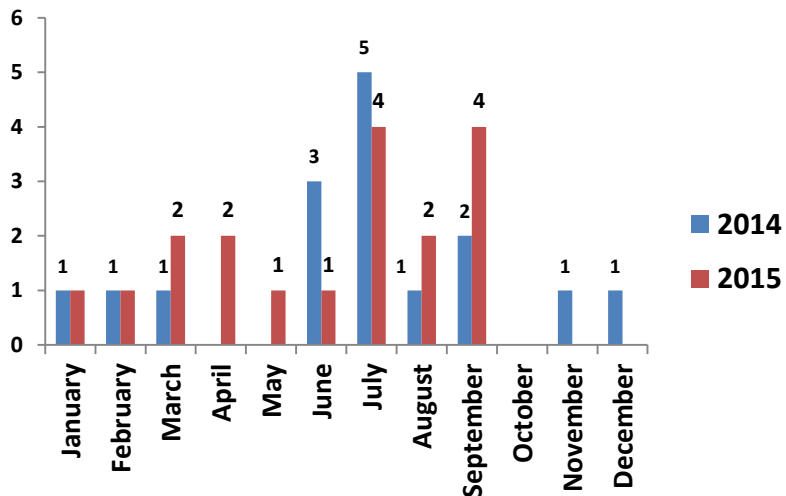
Year to Date (Cont.)		
Location	#	Line
Geary & Presidio	3	38
Geary & Van Ness	2	38R
Geneva & Moscow	3	8X
Geneva & Mission	4	43; 8BX
Geneva & Rio Verde	5	9
Geneva & San Jose	5	29; 8; M
Griffith & Oakdale	2	23
Grove & Van Ness	2	49
Haight & Masonic	5	71; 7; 6; 43
Ferry Terminal	7	21; 14; F; 6
Fort Mason	3	28
Harbor & Northridge	3	54
Hudson & Keith	2	54
Hudson & Newhall	8	54; 44
Judah & La Playa	2	N
Kearny & Market	2	9; 31
Kearny & North Point	5	8; 8AX; 8X
Main & Mission	9	38; 9; 14L; 14R; 9R
Market & Van Ness	4	49; 19
Mcallister & Jones	3	5
McLaren & Sunnysdale	2	9
Mission & 8 <sup>th</sup>	3	14; 14L; 14R
Mission & 14 <sup>th</sup>	3	49; 14
Mission & 16 <sup>th</sup>	15	14; 14L; 22; 49; 14R
Mission & 18 <sup>th</sup>	4	33; 14
Mission & 24 <sup>th</sup>	8	14L; 12; 67; 14; 14R
Mission & 26 <sup>th</sup>	2	14
Mission & 30 <sup>th</sup>	4	14; 49
Mission & Brazil	2	49; 14X
Mission & Chavez	3	27; 14
Mission & Italy	2	14; 29
Mission & Montgomery	2	14
Mission & Percita	2	14R; 49

Year to Date (Cont.)		
Location	#	Line
Mission & San Jose	12	14; 14R
Mission & Silver	2	14
Mission & Steuart	2	14
Mission & Valencia	2	14
Mission & Van Ness	2	14; 49
Montgomery Station	2	KT; F
Ofarrell & Van Ness	3	38; 47
North Point & Van Ness	11	49; 47; 30
Palou & 3 <sup>rd</sup>	8	44; 24; KT; 23
Phelan Loop	8	8X; 49; 8
Point Lobos & 48 <sup>th</sup>	3	38; 38L
Potrero & 16 <sup>th</sup>	4	9; 90; 22
Potrero & 24 <sup>th</sup>	3	48; 9; 33
Potrero & 25 <sup>th</sup>	2	33
Powell & Beach	2	47
Presidio Division	6	45
Sacramento & Van Ness	2	49
Santos & Brookdale	2	9; 8X
Santos & Geneva	3	8X; 508; 8
Stockton & Sacramento	2	30; 45
Stockton & Sutter	2	30; 8BX
Transbay Terminal	18	71; 38; 108; 38L; 38R; 7; 338; 5
Van Ness & Jackson	2	49; 27
Visitacion & Schwerin	2	8X
West Portal & Ulloa	3	48; 91
Winston & 20 <sup>th</sup>	2	17; 29

# Weapons\*

## September 2015

# of Incidents – Weapons



\*Weapons include found firearms, possession of loaded/concealed firearms, tear gas, switchblade knives and imitation of using a laser

Weapon incidents increased by two in Aug., after falling by two in Aug. compared to July.

### Month-on-Month

Aug	Sept
2	4

### Year-on-Year

Sept '14	Sept '15
2	4

### Year to Date

2014	2015
14	18

# Weapons by Line & Location

## September 2015

### Weapons by Line

2015 (Jan-September)	
Line	# of Incidents
14	4
14R	1
31	1
38	3
KT	1
N	1
Unknown	8

2014 (Jan-September)	
Line	# of Incidents
14	3
19	1
38	1
Unknown	8

### Weapons by Location

Year to Date		
Location	#	Line
3 <sup>rd</sup> & Revere	1	
5 <sup>th</sup> & Mission	1	
6 <sup>th</sup> & Geary	1	38
8 <sup>th</sup> & Geary	1	
15 <sup>th</sup> & Mission	1	14
19 <sup>th</sup> & Mission	1	14
22 <sup>nd</sup> & Mission	1	14
24 <sup>th</sup> & Mission	1	
Bay Shore & Cortland	1	
Clay & Stockton	1	
Eddy & Larkin	1	31
Embarcadero Station	1	N
Fillmore & Hayes	1	
Geary & Laguna	1	
Geary & Larkin	1	38
Geary & Taylor	1	38
Geneva & Mission	1	14
Ulloa & West Portal	1	KT

Weapon incidents in Sept. occurred on the N, 14 and KT – each of these lines had a single weapon incident.

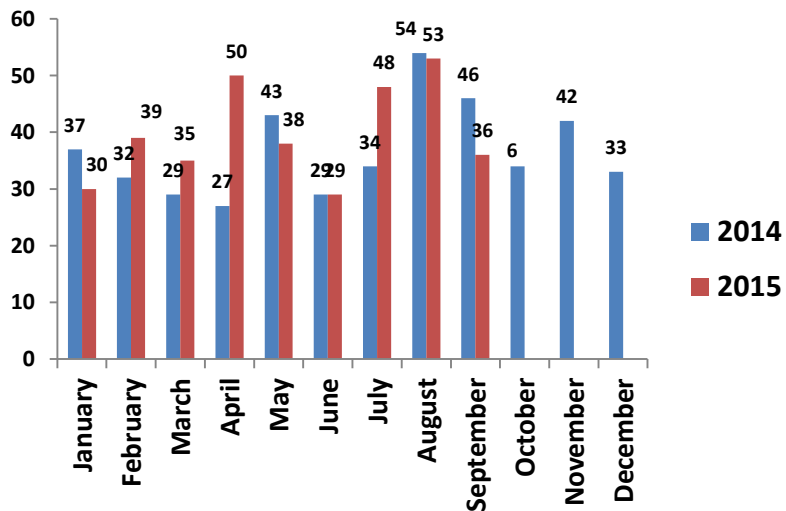
- The 14 and 38 were the lines with the most weapon incidents in the year to date

There were no overlapping locations for where these weapon incidents occurred in Sept. or the year-to-date.

# Verbal Altercation

## September 2015

# of Incidents – Verbal Altercation



Month-on-Month	
Aug	Sept
53	36

Year-on-Year	
Sept '14	Sept '15
46	36

Year to Date	
2014	2015
331	358

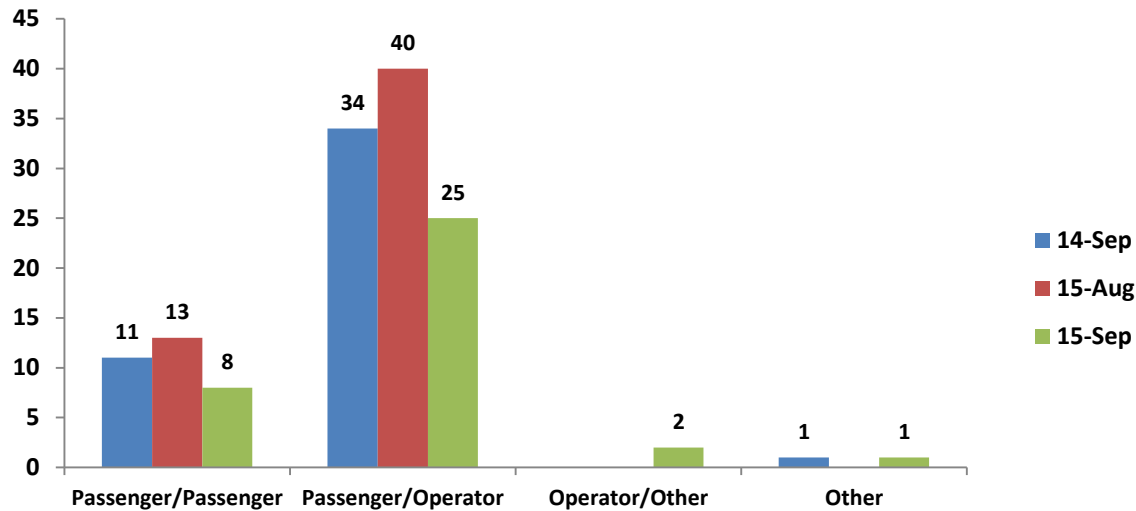
Verbal altercation incidents fell 32% compared to Aug., after rising 10% in Aug. compared to July.

- August had the highest number of verbal altercations in 2015

Compared to Sept. '14, these incidents fell 21%

# Verbal Altercation by Type

## September 2015



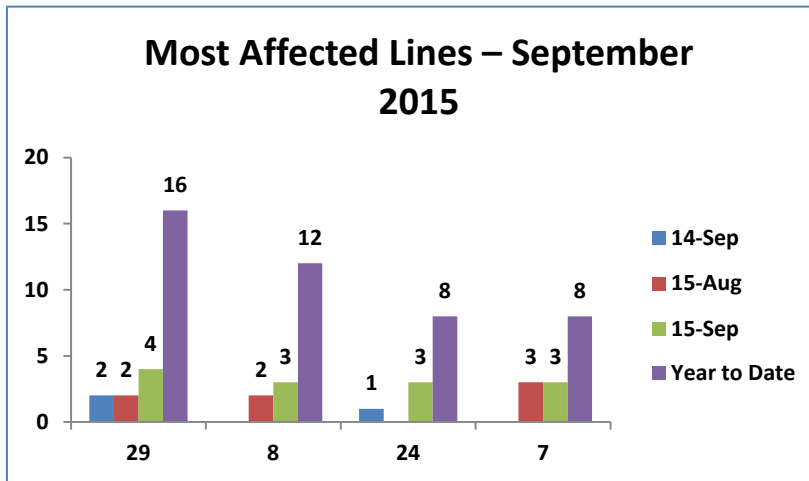
Passenger/Operator incidents remained the most frequent type of verbal altercation in Sept.

- 69% of all verbal altercations in Sept. were Passenger/Operator incidents; in Aug., 75% of these incidents were Passenger/Operator.
- Passenger/Operator incidents dropped 38% compared to Aug., after rising 14% in Aug. compared to July.

Passenger/Passenger verbal altercations fell 38% compared to Aug., after increasing 30% in Aug. compared to July.



# Verbal Altercations by Line September 2015



The 29 replaced the 9 as the line with the most verbal altercation incidents in Sept.

- Incidents on the 24 increased significantly compared to Aug. The 14 was the line with the most verbal altercation incidents in the year-to-date followed by the 9 and the 22.
- In Sept., the 14 and the 9 each had two verbal altercation incidents while the 22 had one incident.

**2015 (Jan-September)**

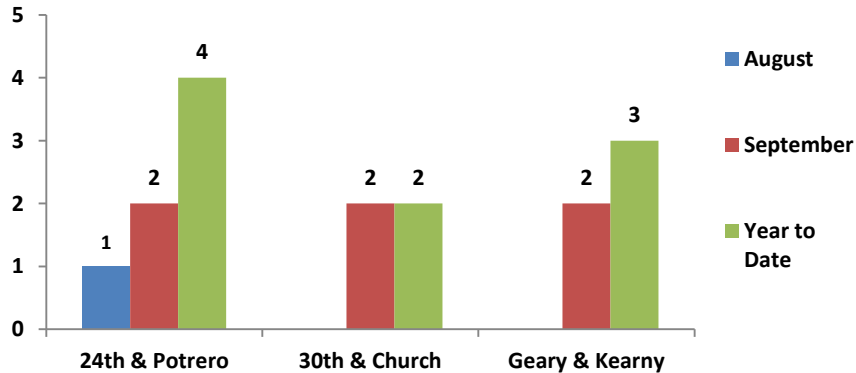
Line	# of Incidents
1	7
2	4
3	2
5	11
6	6
7	8
8	12
9	25
12	3
14	27
18	3
19	13
21	4
22	18
23	6
24	8
25	2
27	7
28	5
29	16
30	9
31	10
33	5
36	1
38	12
43	1
44	7
45	4
47	7
48	4
49	15
52	1
54	4
55	1
59	3
60	4
61	5
67	1
71	6
90	1
91	6
349	1
8X	10
9L	1
9R	7
14L	3
14R	6
30X	1
38L	3
38R	3
F	10
J	1
KT	6
L	4

**2014 (Jan-September)**

Line	# of Incidents
1	8
2	3
3	1
5	20
6	8
9	18
10	1
12	5
14	21
18	1
19	14
21	6
22	19
23	5
24	9
27	7
28	6
29	9
30	12
31	12
33	2
35	2
36	1
37	3
38	11
41	1
43	4
44	3
45	3
47	8
48	3
49	20
54	2
59	3
60	6
61	2
71	10
91	4
108	1
14L	4
14X	1
38L	3
5L	1
8X	20
9L	1
F	9
J	2
KT	3
L	4
M	5
N	4

# Verbal Altercation by Location September 2015

**Most Affected Intersections – September 2015**



24<sup>th</sup> & Potrero, 30<sup>th</sup> & Church and Geary & Kearny replaced 5<sup>th</sup> & Market, 21<sup>st</sup> & Potrero, Daly City BART and Ofarrell & Powell as the intersections with the most verbal altercation incidents in Sept.

- All verbal altercation incidents at the 30<sup>th</sup> & Church intersection for the year-to-date occurred in Sept.

**September 2015**

Location	#	Line
24 <sup>th</sup> & Potrero	2	9
30 <sup>th</sup> & Church	2	24
Geary & Kearny	2	38R; 8

**Year to Date**

Location	#	Line
3 <sup>rd</sup> & 20 <sup>th</sup>	3	22
3 <sup>rd</sup> & Hudson	2	44; 54
4 <sup>th</sup> & Market	6	31; 5; F; 7
5 <sup>th</sup> & Mission	2	8X; 27
6 <sup>th</sup> & Bryant	2	8
6 <sup>th</sup> & Market	3	9; F; 7
8 <sup>th</sup> & Mission	4	14; 14R
11 <sup>th</sup> & Harrison	2	9; 47
11 <sup>th</sup> & Market	2	9; M
11 <sup>th</sup> & Mission	4	9; 14R
14 <sup>th</sup> & Mission	3	49; 14
14 <sup>th</sup> & Quintara	2	6
15 <sup>th</sup> & Mission	4	14; 49
16 <sup>th</sup> & Potrero	3	9R; 9
19 <sup>th</sup> & Buckingham	2	18
19 <sup>th</sup> & Holloway	2	29; 28
21 <sup>st</sup> & Potrero	2	9
23rd & Potrero	2	9; 33
24 <sup>th</sup> & Mission	2	14L; 49
24 <sup>th</sup> & Potrero	4	9R; 33; 9
30 <sup>th</sup> & Church	2	22
Arguello & California	2	2
Arleta & Bay Shore	2	90; 9R
Bacon & San Bruno	2	8; 8X
Baker & Beach	2	29
Bayshore & Cortland	3	9; 24
Beach & Jones	3	F
California & Drum	3	61
Clay & Drumm	2	1
Columbus & Francisco	2	30
Columbus & Stockton	2	30; 45
Daly City BART	2	28; 14R
Ferry Terminal	2	6; 14
Fillmore & Eddy	4	22

See next slide for more intersections

# Verbal Altercation by Location (Cont.)

## September 2015

Year to Date Continued		
Location	#	Line
Fillmore & Geary	4	22; 38L; 38
Fitzgerald & Keith	3	29
Folsom & 9 <sup>th</sup>	2	12
Geary & Kearny	3	38; 38R; 8
Geary & Leavenworth	3	38L; 27; 38
Geary & Van Ness	2	38; 38R
Geneva & San Jose	2	8; 29
Italy & Mission	3	14; 29
Kearny & North Point	2	8
Market & 5 <sup>th</sup>	5	8X; 9L; F; 6; 9R
Market & 9 <sup>th</sup>	3	21; F; 9R
Market & 7 <sup>th</sup>	3	71; 7
Mission & 16 <sup>th</sup>	4	22; 14L; 49
Mission & Lowell	2	14; 14L
Mission & San Jose	3	14
Mission & Otis	3	14
North Point & Polk	2	19
Ofarrell & Powell	3	38; 60
Pacific & Stockton	2	12; 45
Phelan Loop	2	8X; 8
Powell & Sutter	3	59; 3
Stockton & Jackson	2	30
Sunnydale & McLaren	2	9
Transbay Terminal	4	25; 108; 38; 38R
Van Ness & Chestnut	2	47; 49
Van Ness & Market	4	49; 47
Van Ness & Mcallister	2	5; 49
Vincente & Sunset	2	29
West Portal & Ulloa	2	91; M
West Portal Station	2	91