



The Other 9-to-5

flickr; freeside510

IMPROVING LATE NIGHT AND EARLY MORNING TRANSPORTATION FOR SAN FRANCISCO WORKERS, RESIDENTS AND VISITORS

San Francisco Municipal Transportation Agency Board, 4|21|2015


How we got here: April 2014 Late Night Transportation Working Group created

Supervisor Scott Wiener Wants More 24-Hour Transit Options

Posted By Rachel Swan  on Tue, Apr 22, 2014 at 12:40 PM

Weekend bridge closures in the last few years gave us a chance to experience BART the way we'd long envisioned it: as a 24-hour party line.

Ideally, all-night BART would essentially become an extension of San Francisco nightlife, we thought. People would take BART to after-parties and booty calls, passengers would fraternize and fall in love through the Transbay Tube.

Sadly, the idea of a 24-hour BART wasn't exactly what he had expected: It suffered from **lackluster**  The 24-hour party line.

ridership :
mention th
debate about



The 24-hour party

“Let’s Take A Hard Look At Late Night Transit Options” Says Supe, Forms Working Group

BART

MUNI

SCOTT WIENER

by [Bay City News](#) | April 22, 2014 6:46 pm | in [City Hall](#) | [3 Comments](#)



Coalition of industry reps, transportation agencies, and stakeholders met 5 times



AC Transit | BART | GG Transit | Golden Gate Restaurant Assoc. | Hotel Council | Luxor Cab | Mission Pie | Recording Academy | SamTrans | SEIU | sf.citi | SFCTA | SFMTA SF Bar Owners Alliance | SF Council of District Merchants | SF Labor Council | SF Planning | SF Police Dept | SF Produce Mkt | SF Transit Riders Union | SF Travel Assoc | SF Women Against Rape | SPUR | Sunshine Ordinance Task Force | Uber | Virgil's Sea Room



Our Vision for Late Night/Early Morning Transportation Serving SF

Fast and reliable transportation choices that serve late night and early morning workers, residents, and visitors

Twenty-four hour rail service complemented by a network of local and regional buses

A transit network based on both coverage and demand

Improved perceived and actual personal security while waiting for, riding, and walking to and from transit

Safe streets for all road users

Easily accessible information about travel choices in multiple locations

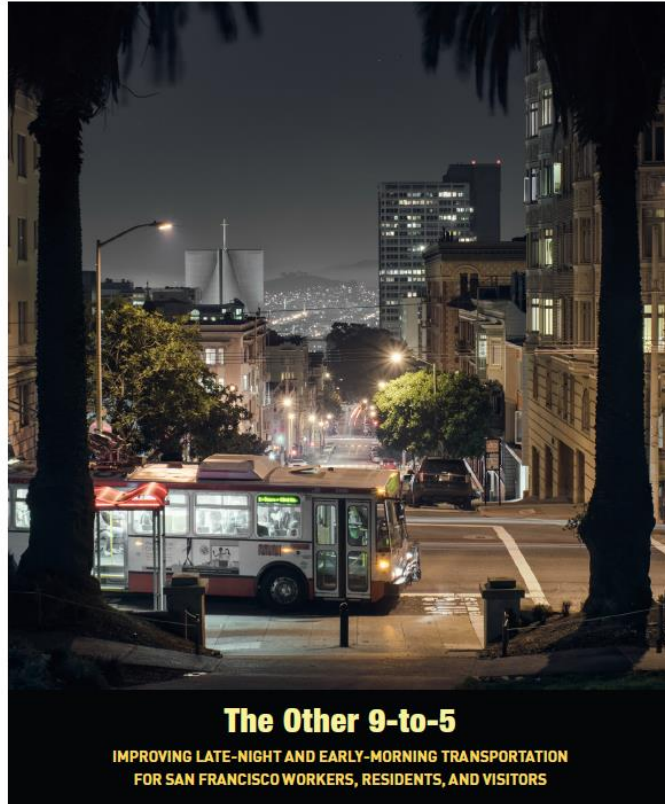
Safe, orderly and convenient passenger loading and unloading

Transportation options that are affordable to all



Report Contents: today's presentation only covers some highlights

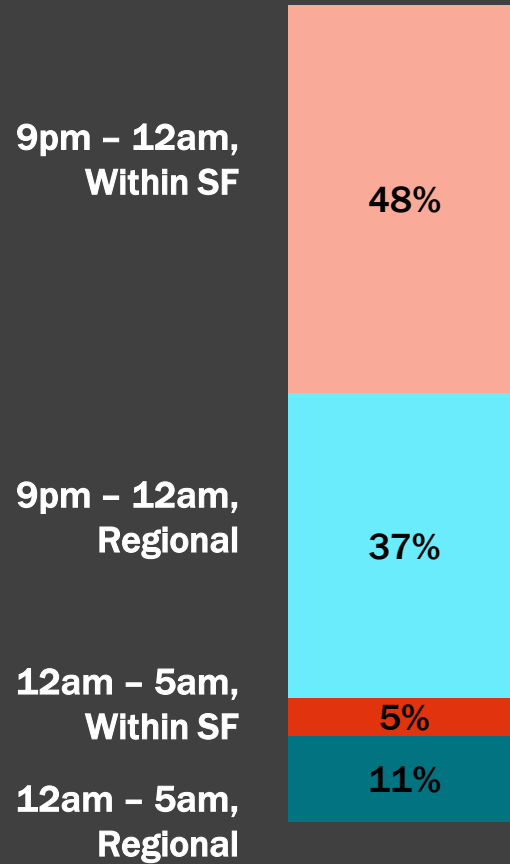
[AVAILABLE AT NIGHTLIFESF.ORG](http://NIGHTLIFESF.ORG)



1. Introduction
 2. Transportation Needs
 3. Findings and Recommendations
 4. Next Steps
- ▶ 15 recommendations
 - ▶ 5 proposed next steps
 - ▶ 2 months of scoping to define roles, responsibilities, budget, schedule



On an average weeknight, there are 1/4 million nighttime trips (excluding out of region visitors)



....Equivalent to 3X the number of trips generated by a Giants game!

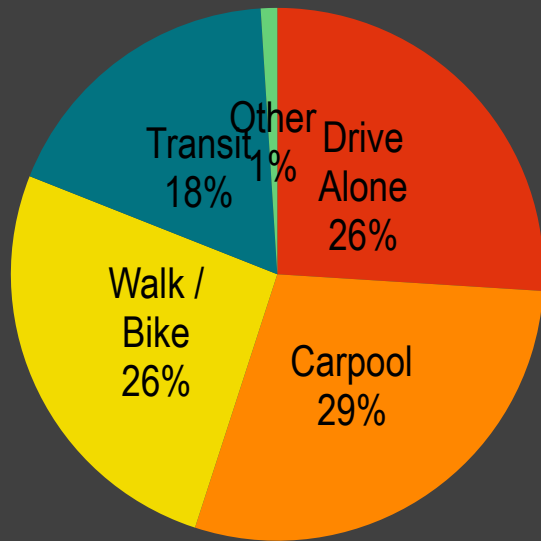
(about 7% of total daily trips)

Source: CHTS, 2010

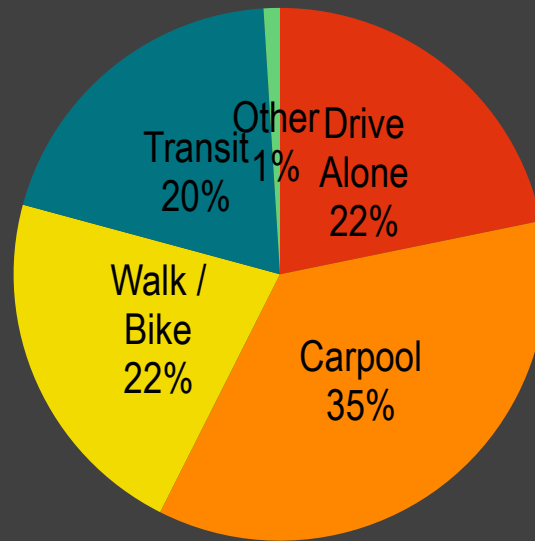


A relatively constant share of trips rely on transit at all times of day

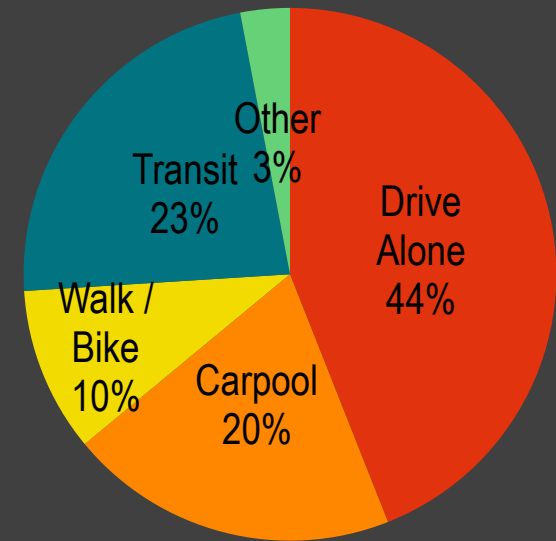
Daytime (5am-9pm)



Late Night (9pm-12am)



Early AM (12am-5am)

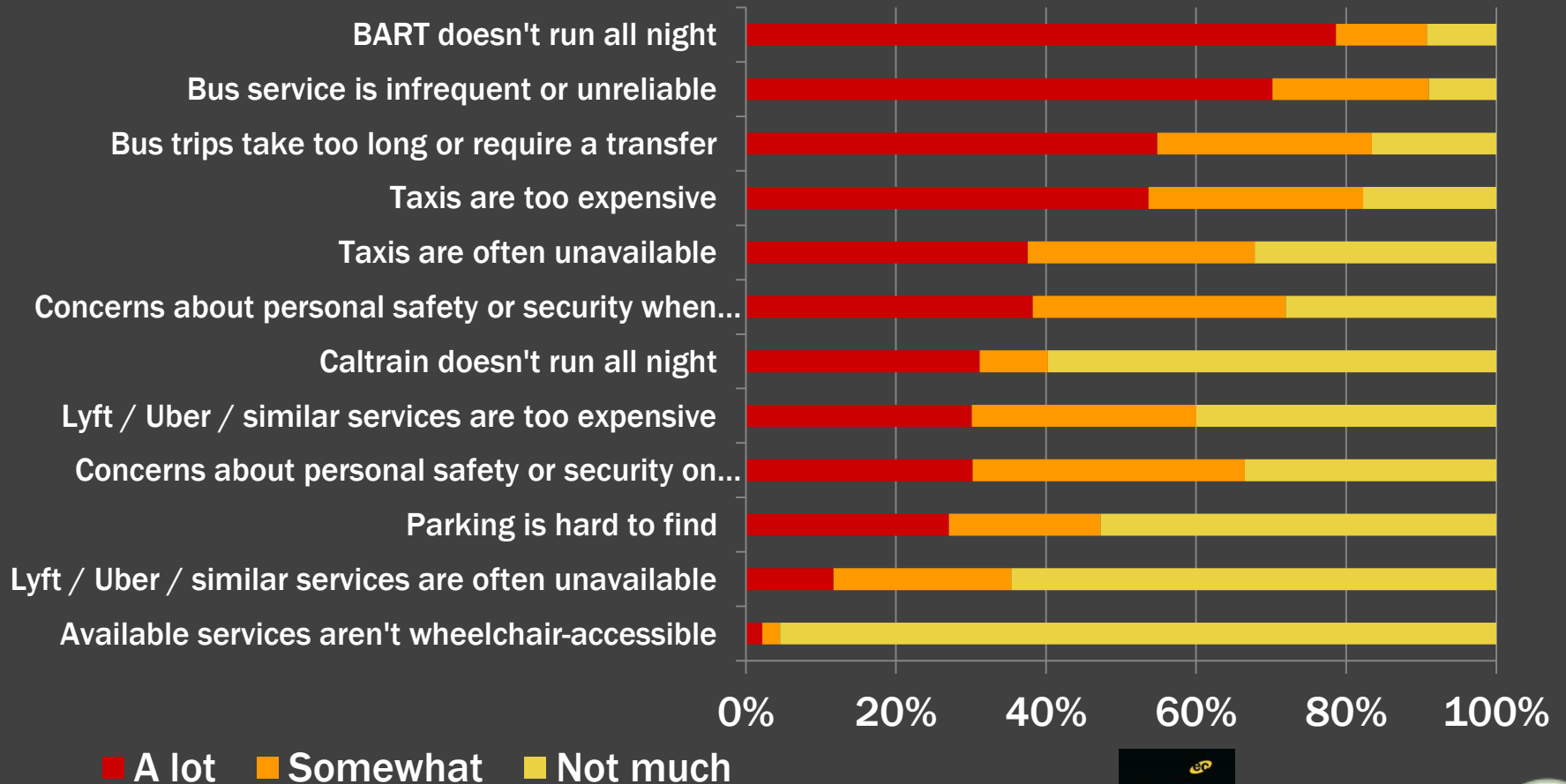


Source: CHTS, 2010



Survey and Stakeholder Interviews Reveal Key Needs

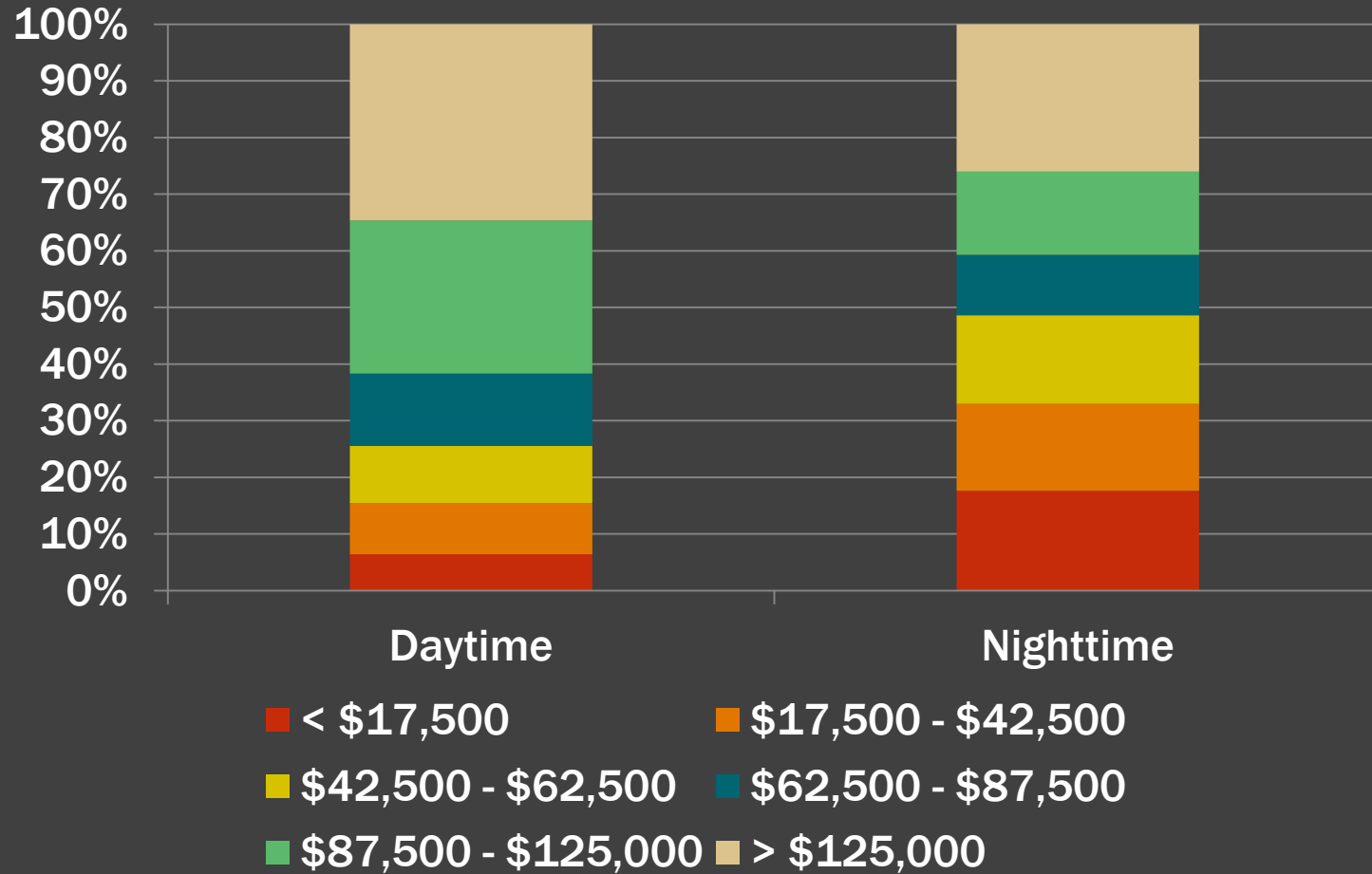
How much do these issues affect the choices you make regarding travel to, from or within San Francisco between midnight and 5 am?



Source: Late Night Transportation Survey Results, Fall 2014



All-night commuters are more likely to be low- and moderate-income.



Source: California Household Travel Survey, 2010



Five major need areas

AVAILABILITY, COVERAGE



SPEED, RELIABILITY



SAFETY, SECURITY



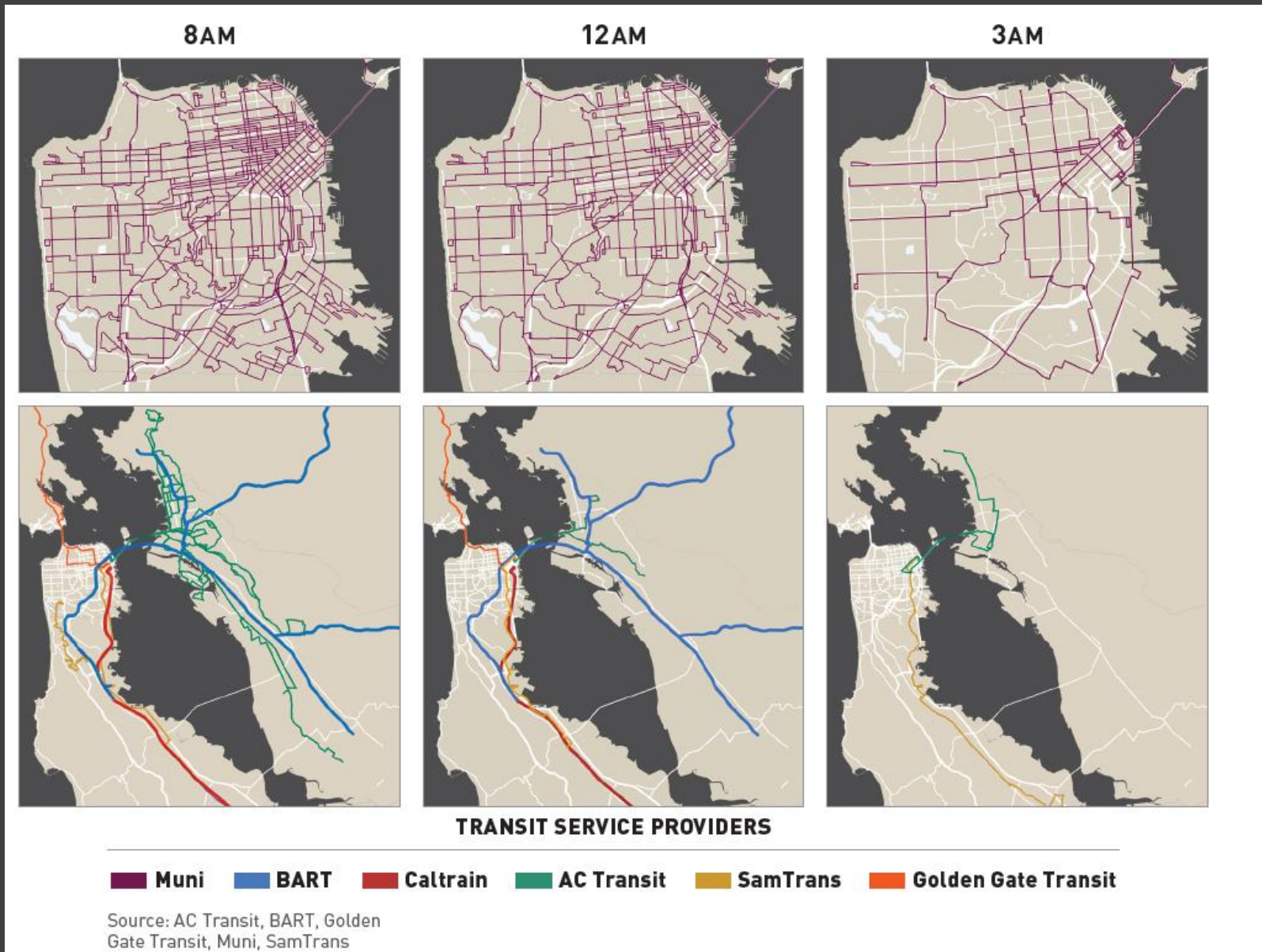
AWARENESS, COMFORT



COST, EQUITY



Less transit coverage over-night; local transit more robust than regional



Two exciting additions to all-night service: AC Transit/BART and Muni



- 1. Begin process to refresh all-night local and regional bus service**
- 2. Pilot program for location-specific improvements using challenge grants**
- 3. Coordinated information campaign to better communicate existing services**
- 4. All-night transportation monitoring practice**
- 5. Continue Late Night Transportation Working Group**

To be further defined through two month scoping period to clarify roles, responsibilities, budget, schedule



- 6. BART, Caltrain, and the SFMTA should produce white papers further documenting the operations constraints preventing longer rail hours**

- 9. SFMTA should identify customer-focused customer amenities that could be used to improve perceptions of personal security at bus and light-rail stops.**

- 14. SFMTA should develop shared-ride taxi regulations.**



Thank you! Questions?

Download report: www.nightlifesf.org

Ben Van Houten, OEWD
Ben.vanhouten@sfgov.org
415.554.7038

Jocelyn Kane, SF
Entertainment Commission
Jocelyn.kane@sfgov.org
415.554.5793

Liz Brisson, SFCTA
liz@sfcta.org
415.522.4838

