



SFMTA

# Building Progress: Potrero Yard Neighborhood Working Group

October 2024 | Meeting #46



## BUILDING PROGRESS

# Detailed Agenda

1. Member & SFMTA Announcements — 10 minutes
2. Public Art – 15 minutes
3. Working Group Update – 15 minutes
4. Community Engagement Update – 10 minutes
5. Project Update – 10 minutes
6. Bus Yard Updates – 10 minutes
7. Next Steps — 5 minutes
8. Public comment - members of the public who wish to participate in the meeting virtually will be placed on mute, regardless of joining via video or by phone, until the Public Comment section.





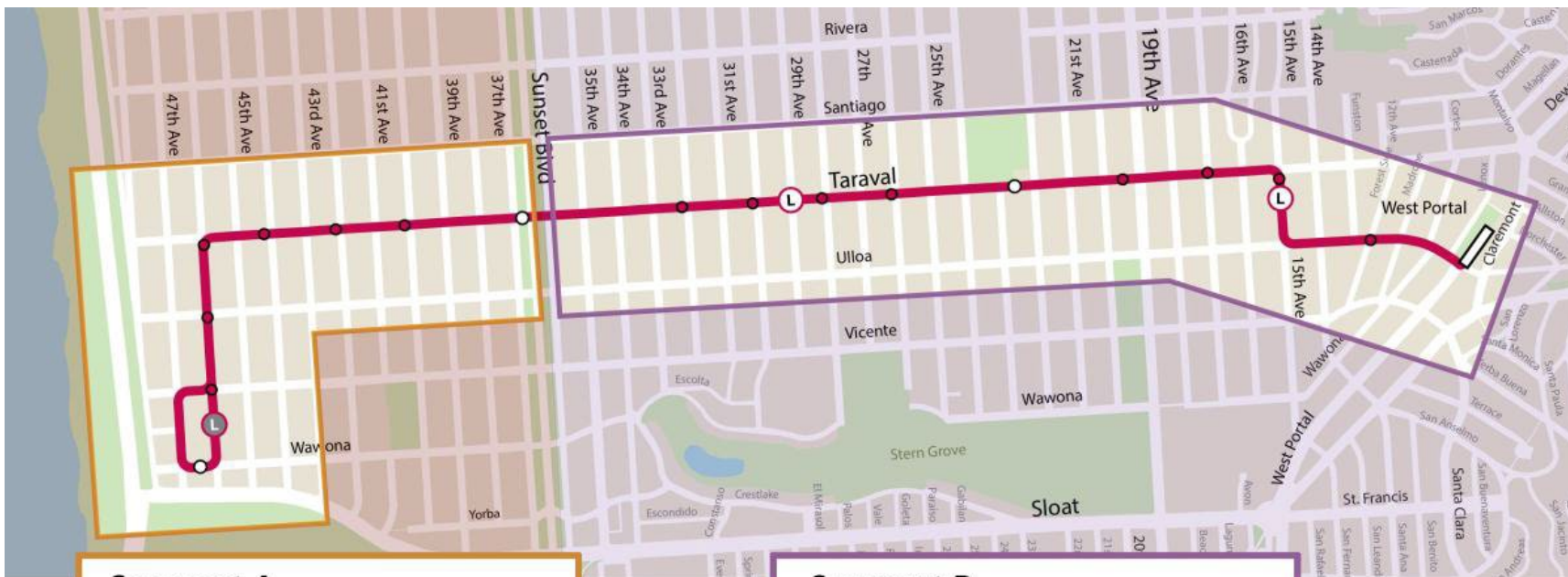
SFMTA

# Member and SFMTA Announcements

John Angelico, SFMTA



# SFMTA Announcement: L Taraval Trains are Back



**Segment A**  
*SF Zoo to Sunset Blvd*  
Construction 2019 - July 2021  
Completed on schedule

**Segment B**  
*Sunset Blvd to West Portal*  
Construction January 2022 - Fall 2024  
Completed on schedule

- On Saturday, Sep. 28, L Taraval trains resumed service between Embarcadero Station and SF Zoo. You will once again be able to enjoy a **one-seat ride from downtown to the beach.**
- Trains are scheduled to arrive every 10 minutes on weekdays and every 12 minutes on weekends.
- Board trains at the platform or street. L Bus service is discontinued.





# **Announcements: Working Group**

Working Group members please share upcoming events or activities with the Working Group, SFMTA, and PNC.



SFMTA

# Public Art Update

Jackie von Treskow, SFAC




Potrero Yard Modernization Public Art Program  
Artist Selection Update | Potrero Yard Neighborhood Working Group | Tuesday, October 8, 2024






**CELESTE BYERS & SPENCER KEETON CUNNINGHAM**  
INTEGRATED GLASS ARTWORK PROPOSAL FOR THE POTRERO YARD BUS RAMP ON 17th STREET




**ARTWORK DESCRIPTION**


The design is a vibrant, abstract composition of organic, flowing shapes in shades of green, yellow, orange, and pink, set against a white background. It is intended for the Potrero Yard Bus Ramp on 17th Street.



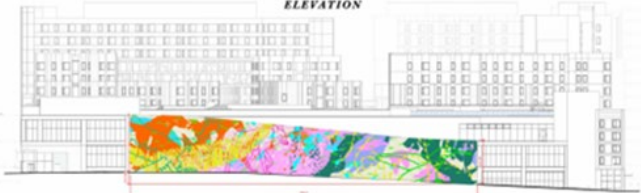
**SYMBOLS: ABSTRACTED ELEMENTS**



**SYMBOLS: DRAWN ELEMENTS**



**ELEVATION**



Celeste Byers & Spencer Keeton Cunningham  
*Migration*

**Integrated Glass Artwork Proposal for the Potrero Yard Bus Ramp on 17th Street**



**This design is dedicated to the city's MUNI employees, and the vehicles and legacy of its public transportation. At the mural's center is a trolley driven by a retired local legend ("Nate"), of whom we learned through a driver union administrator. Left of center is a MUNI map of Potrero Yard; the map and its interconnected bus lines evoke constellations in the night sky above, and the interconnectedness of the city below - maintained by two hard-working MUNI mechanics. A yellow Flicker flies into the night sky from a pre-colonial Bay Area landscape (far left), featuring contemporary Ohlone rowing Tule boats, a precursor to MUNI's legacy. They row in the shadow of a gigantic Matigya Poppy and under a patterned sky, inspired by the contemporary traditional basket weaving of Linda Yamane. To the right of the center, the mural celebrates the strength of San Francisco's early female bus drivers inspired by a historical photo display near Potrero Yard's drivers' break room. Second from right is a bus shelter, before which a Douglas Iris grows, connecting seamlessly to the inside of a bus featuring an Ohlone youth wearing traditional regalia, honoring their continued presence and stewardship of the land. On the far right lies a cityscape with a setting sun inspired by the MUNI Mechanica's union logo. Youth and adult fast passes connect the different generations that ride MUNI. Finally, elements celebrating native flora, native-inspired patterns, historical MUNI transfers through the decades, "legacy drivers," and other historical MUNI contributors can be seen interwoven throughout the mural.**

**Precita Eyes Muralists: Susan Cervantes, Fred Alvarado, Monica Magtoto & Eli Lippert.**

Precita Eyes Muralists Association  
*We Move the City*

**MUNI in Motion**  
*An ode to the routes that raised us in our city by the Bay.*  
TWIN WALLS MURAL COMPANY Elaine Chu and Marina Perez-Wong

Integrated Glass Artwork Proposal for the Potrero Yard Bus Ramp on 17th Street



**In our 20+ years in the city and its modes of transportation have always been reflective of cultural and political changes. Our diversity, our collective struggles and triumphs, the celebrations we share and the care we have for one another are reflected in a way unlike any other part of the world. We aim to celebrate this connectivity by illustrating a woven tapestry of people and places throughout time in San Francisco, starting at Potrero Yard.**

**Our design reads from right to left beginning with an indigenous Klamath-Ohlone landscape and ending with a trolley chugging through a clear city, a symbol of hope for our future and respect for our past. The flow of the urban system shapes the stretch across our mural as inspired by a platform an Ohlone basket weaver Linda Yamane, a friend of the Ohlone tribe.**

**Our primary goal is to foster better elements of this beautiful land we share as well as working on our own personal health and the health of our communities. Connection is an important factor in creating lasting change in many cultures meaning to us an act of recognizing health and wholeness as a root and overarching backbone of our lives. We can't heal cities and by extension the bodies and people within them as well as elements in the natural world as much symbols of how our collective energy is woven into the fabric, or into the soul, of it.**

**The color palette we chose consists of greens, earth tones, reds and orange hues. The greens serve to channel sustainability and healing energy. Earth tones depict the roots that provide stability and foundation. The reds and oranges are a tribute to two colors most associated with our unique city and history of MUNI.**

**The heart of this mural is people, we showcase connections between passengers, bus riders, drivers and pedestrians. We celebrate our human landscape as it shifts, highlighting local communities of color and equitably making San Francisco of the 19th century to the present across space and time.**

**MUNI is not just a mode of transportation for getting from place to place. It is a portal for viewing San Francisco through different lenses. It can be a place of comfort, a place of friendship, a place to rest and reflect, or a place of empowerment. One can take a bus that begins Downtown and ends in the Marina District, having passed by some of the iconic buildings in San Francisco and meeting someone who claims to have "dinner with Socrates in '75." Companies that are unforgettable MUNI story and we are all connected through these gems. MUNI is inseparable from San Francisco and the paths it weaves through an ever-evolving city, connecting us, and, and future. Our intention for this design is to capture the spirit of San Francisco, conveying a visual narrative that celebrates our past, embraces our present, and beckons us towards a brighter future.**

**We were inspired by many artists including Diego Rivera, David Alfaro Siqueiros, Jorge Santiago Campesino, Dr. Rosa Argenteo who grew up in San Francisco and was one of the first Black women to be a MUNI conductor and the muralists Gary NADA, Sheryl Graves and Barbara Carmon who painted "When the Sun Was on the Mountains" on the second location of the American Indian Cultural Center (AIACC) on 14th and Valencia Streets.**

Twin Walls Mural Company  
*Muni in Motion*

POTRERO YARD MODERNIZATION PROJECT | 17<sup>th</sup> STREET BUS RAMP  
ARTIST REVIEW PANEL TWO SUMMARY

**MEETING DATE**

August 28, 2024

**VOTING SELECTION PANELISTS**

Chris Jauregui, Vice President, Plenary Americas (shared vote with Yancey Clayton)  
Fátima Ramirez, Executive Director, Acción Latina  
John Angelico, Public Information Officer, SFMTA (shared vote with Kerstin Magary)  
Jolene Yee, Community Representative, Friends of Franklin Square Park  
Kerstin Magary, Deputy Program Manager, SFMTA (shared vote with John Angelico)  
Mary Chou, Civic Art Collection and Public Art Director, SFAC  
Mary Travis-Allen, Community Representative, American Indian Cultural District  
Rhiannon Evans MacFadyen, Curator, Artist, Consultant  
Trisha Lagaso Goldberg, Independent Curator  
Yancey Clayton, Principal/Associate Director, Arcadis IBI Group (shared vote with Chris Jauregui)

**PROCESS**

Three artist finalists presented their proposals for the Potrero Yard Modernization 17<sup>th</sup> Street Bus Ramp Public Art Project. The Artist Review Panel discussed the finalists' proposals and scored each artist on the following criteria (1= low score):

Artistic Merit (1-10)  
Relevant Skills and Experience (1-5)  
Meets Project and Civic Art Collection Goals (1-10)  
Appropriate to Site (1-5)

**RESULTS**

Twin Walls Mural Company	253
Celeste Byers & Spencer Keeton Cunningham	205
Precita Eyes Muralist Association	203

**Artist Review Panel Two Composition**

**San Francisco Arts Commission**

*Mary Chou, Director of Public Art Program and Civic Art Collection*

**SFMTA Representatives**

*John Angelico, Public Information Officer, Building Progress Program*

*Kerstin Magary, Section Director, CSO Facilities and Real Property Management,  
Deputy Building Progress Program Manager*

**Design Team Representatives**

*Yancey Clayton, Principal/Associate Director, Arcadis IBI Group*

*Chris Jauregui, Vice President, Plenary Americas*

**Arts Professionals**

*Rhiannon Evans MacFadyen, Curator, Artist, Consultant*

*Trisha Lagaso Goldberg, Artist and Independent Curator*

*Fátima Ramirez, Executive Director, Acción Latina*

**Community Representatives**

*Mary Travis-Allen, Potrero Neighborhood Working Group, American Indian Cultural District*

*Jolene Yee, Potrero Neighborhood Working Group, Friends of Franklin Square Park*



## Twin Walls Mural Company



Twin Walls Mural Company (Elaine Chu and Marina Perez-Wong) is committed to addressing the perspectives of community, from human rights, highlighting injustices through the lens of oppressed people and revealing ancestral traumas to celebrating life through culture and color. Manifesting health, healing and connection, TWMC also encourages environmental stewardship.





# MUNI in Motion

*An ode to the routes that raised us in our city by the Bay.*

TWIN WALLS MURAL COMPANY Elaine Chu and Marina Perez-Wong

## Integrated Glass Artwork Proposal for the Potrero Yard Bus Ramp on 17th Street



In our 7x7 universe the city and its modes of transportation have always been reflective of cultural and political changes. Our diversity, our collective struggles and triumphs, the celebrations we share and the care we have for one another are valued in a way unlike any other part of the world. We aim to celebrate this connectivity by illustrating a woven tapestry of people and places throughout time in San Francisco, starting at Potrero Division.

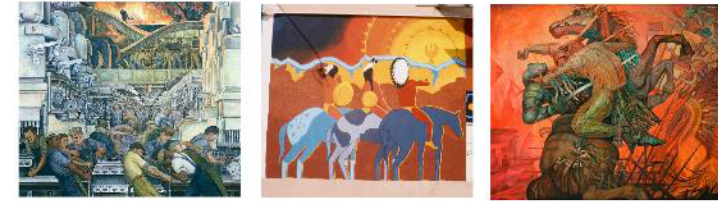
Our design reads from right to left beginning with an indigenous Yelamu Ramaytush Ohlone landscape and ending with native birds soaring through a clear sky, a symbol of hope for our future and respect for our past. The five criss cross pattern shapes that stretch across our mural are inspired by a pattern in an Ohlone basket woven by Linda Yemane, a descendent of the Ohlone tribe.

Our primary goal is to foster better stewards of this beautiful land we share as well as working on our own personal health and the healing of our communities. Connection is an important factor in creating lasting change. In many cultures weaving is an art of recognizing health and wholeness as a root and overcoming blockages of seemingly broken connections. We use lines/ cables and by extension the buses and people within them as well as elements in the natural world as visual symbols of how our collective energy is woven into the fabric, or in this case basket, of life.

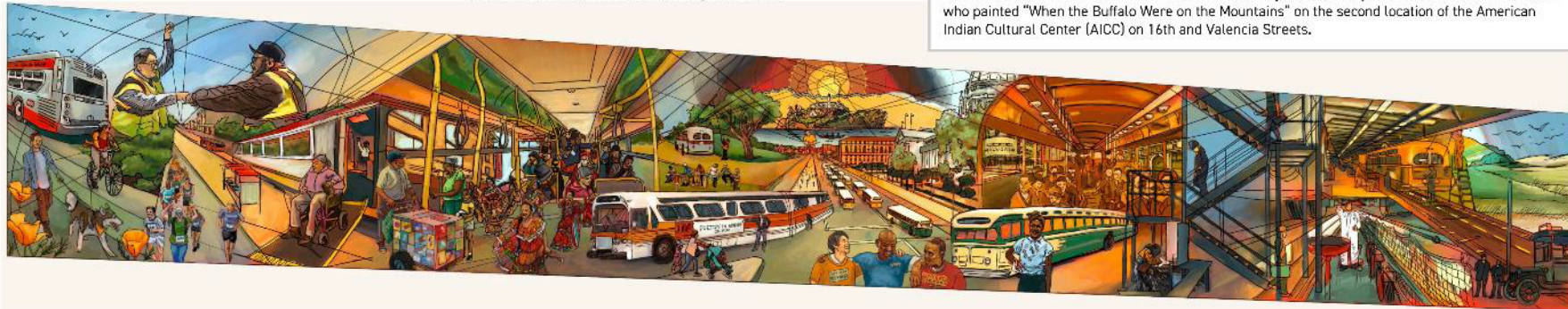
The color palate we chose consists of greens, earth tones, reds and orange hues. The greens serve to channel sustainability and healing energy. Earth tones depict the roots that provide stability and balance. The reds and oranges are a tribute to two colors most associated with our unique city and historic SF MUNI.

The heart of this mural is people; we showcase connections between passengers, bus riders, drivers and pedestrians. We celebrate our home landscape as it shifts, highlighting local communities of today and nostalgically recalling San Francisco of the 1940s up to the present across space and time.

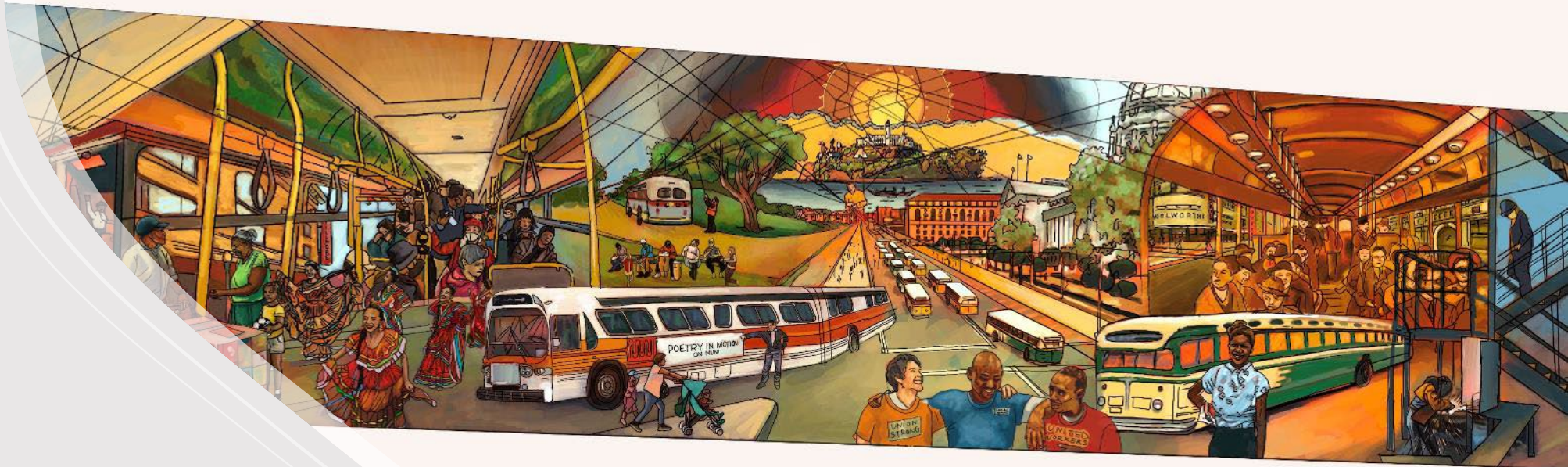
MUNI is not just a mode of transportation for getting from place to place. It is a portal for viewing San Francisco through different lenses. It can be a place of comfort, a place of friendship, a place to rest and reflect, or a place of entertainment. One can take a bus that begins Downtown and ends in the Marina District, having passed by some of the oldest buildings in San Francisco and meeting someone who claims to have "jammed with Santana in '75." Everyone has an unforgettable MUNI story and we are all connected through these gems. MUNI is inseparable from San Francisco and the paths it weaves through on its routes unite communities, art, and history. Our intention for this design is to capture the spirit of San Francisco, composing a visual narrative that celebrates our past, embraces our present, and beckons us towards a brighter future.



We were inspired by many artists including Diego Rivera, David Alfaro Siqueiros, Jorge Gonzalez Camarena, Dr. Maya Angelou who grew up in San Francisco and was one of the first black women to be a Muni conductor and the muralists Gary McGill, Sheryl Graves and Barbara Cameron who painted "When the Buffalo Were on the Mountains" on the second location of the American Indian Cultural Center (AICC) on 16th and Valencia Streets.



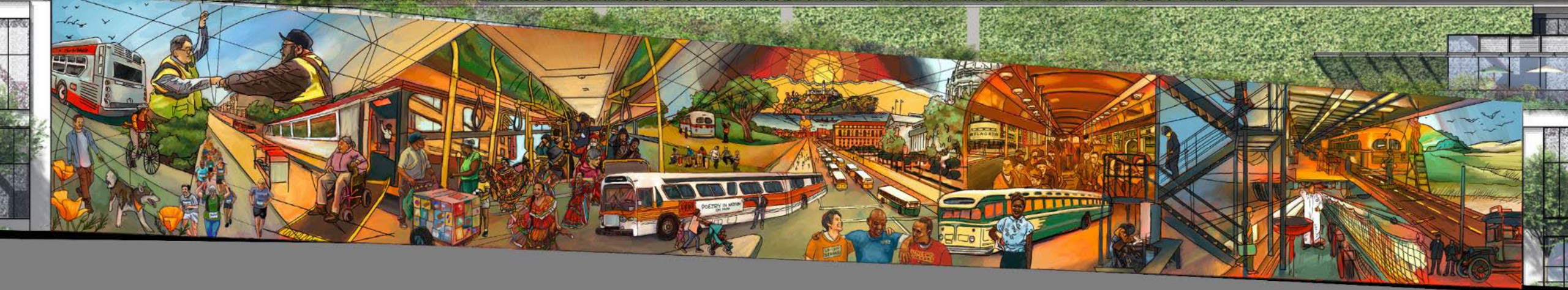














Potrero Yard Modernization Public Art Project  
17<sup>th</sup> Street Bus Ramp Integrated Glass Artwork  
Recommended Artist + Proposal  
Twin Walls Mural Company | *Muni in Motion*





Potrero Yard Modernization Public Art Project  
Mariposa Stairwell Integrated Glass Artwork  
Recommended Artist + Proposal





**Mariposa Stairwell**  
**Artist Conceptual Design Proposals**

**Hogar** | Integrated Glass Artwork for Potrero Yard Stairwell on Mariposa at York Street  
 JET MARTINEZ

**THE STORY**  
 This concept is inspired by Adalberto de Vela (Tito) sculptures from the Central Mexican states of Mexico and Morelos. These clay sculptures feature brightly painted tree trunks with sleeping people, animals and flowers. They represent a way of life in rural towns, biblical scenes or simply colorful representations of nature. In this case, the tree represents the Mission District and the larger San Francisco community. It represents the idea of home, hence the title Hogar (Home).

The actual imagery depicts a familiar Mexican aesthetic that resonates with many of the Latin American cultures represented in the Mission District. While primarily intended as a joyful and uplifting decorative image, it is certainly also a nod to the Mission's beautiful and strong Latino heritage and identity.

The vivid, natural imagery speaks to MUNI's mission of providing clean, more environmentally friendly public transportation for our community.

**SYMMETRY**  
 The structure of the tree features a symmetrical composition. This reinforces an inherent structure harmony. The birds, however, introduce an element of asymmetry, representing disorder and chaos. The notion of creating balance between these two concepts of order and disorder speaks to the idea that our home, our community, and by extension MUNI, is in a constant flow, seeking to create order and harmony amidst the chaos and disorder of our world.

**THE FLOWERS**  
 The flowers represent the vibrant colors and patterns of the Mission District. They are a nod to the traditional Mexican aesthetic of bright, bold colors and intricate patterns.

**THE TREE TRUNK**  
 The tree trunk represents the Mission District and the larger San Francisco community. It is a nod to the traditional Mexican aesthetic of a central, vertical element that supports the structure.

**THE BIRDS**  
 The birds represent the vibrant colors and patterns of the Mission District. They are a nod to the traditional Mexican aesthetic of bright, bold colors and intricate patterns.

**THE GOLD**  
 The gold represents the vibrant colors and patterns of the Mission District. It is a nod to the traditional Mexican aesthetic of bright, bold colors and intricate patterns.

**Jet Martinez**  
**Hogar**

**Potrero Yard Modernization Project:**  
**A Transfer to Tomorrow**  
 Artist: Josué Rojas

**Transfer to tomorrow is a site-specific tribute to the SF Muni workers, the East Mission Neighborhood – past present and future community and the state of the art transportation, housing and educational activities that will take place at the site. The new main yard and housing will take shape in the context of the rich cultural & historical space that is San Francisco. In San Francisco, we hold a strong tradition of creative culture learning and art making. At the same time we are on the cutting edge of technology, innovation in sustainable green practices and the arts.**

**Transfer to tomorrow is a celebration, a tribute and a prayer for a more responsible tomorrow. This mural invites the viewer to think about the natural world, the city of SF and where –and how– we source our energy and transportation.**

Artist Josue Rojas has designed a modern approach to a traditional artform. Emerging from the traditional folk. Specialty in the LaFolla style, the artwork is filled with depictions of wildlife, animals, buses and the natural world. As a reflection of the neighborhood and a tribute through all of its youth, the artist specifically highlights the working class employees and residents of the Muni System. The artist chose both modern and traditional motifs to represent a variety of color and history within a variety of forms and materials. The work is a nod to the neighborhood and the city of San Francisco – it is a tribute to past workers and an honor for future workers and riders of Muni.

Transfer to tomorrow is inspired by the history, current and future culture of the environment and transportation innovation. Muni is a vital service, providing equitable access to mobility and is seen as a vital lifeline for the city. An all-electric fleet of buses to be housed at the site represents a new dawn on the horizon for Muni. This neighborhood and the city of San Francisco – it is a tribute to past workers and an honor for future workers and riders of Muni.

The work will be made of hand-made painting, digital artwork that will be digitally printed, manufactured in glass and installed on the South entrance of the Potrero Modernization Yard. The mural proposal is being and digital, the final artwork will be a combination of hand-painted with digital components. The final stage will be photographed and will be digitally printed on glass.

In preparing for the design of this piece, artist Josue Rojas spoke to neighbors and stakeholders of the project – Jonathan Cohen, Executive Director of the association of the Bay Area Chicanos, Jorge Diaz, veteran SF Muni worker and union rep, Chris Contreras of Hispanic culturalist push services, Perla Martinez of (C)2D Rightswear and Rodrigo Duran, Executive Director of Central SF – San Francisco's largest outdoor festival.

**Sustainable Power:**  
 Hetch Hetchy

**A focus on the future & honoring memory**

**Josué Rojas**  
**A Transfer to Tomorrow**

**MONDAY ON THE 48**  
 Christopher Burch Integrated Glass Artwork for the Potrero Yard Stairwell on Mariposa at York Street

**"Monday on the 48" transcends a bus ride, honoring lives interwoven within this journey. It pays tribute to individuals enriching their neighborhoods despite adversity, celebrating their stories and emphasizing public transportation's integral role in fostering a connected and culturally vibrant San Francisco. This artwork seeks to illuminate unseen yet profound connections between public transportation and cultural resilience, reminding us of the community's power in navigating change.**

**COMMUNITY ENGAGEMENT**  
 Placeholder images in the mock-up will evolve through deeper community engagement. Collaborating with the Potrero Hill Neighborhood House Organization and the residents of the Potrero Terrace and Annex housing developments will ensure the truthful inclusion of residents' photos. Collaboration with Indigenous community members, such as Doreta Doria and Jorge Guillermo Perez Molina, ensures respectful use of their images and integration of Indigenous ceremonial knowledge into the final design.

**Christopher Burch**  
**Monday on the 48**

**Juan R Fuentes** | Integrated Glass Artwork for the Potrero Yard Stairwell on Mariposa at York Street

My concept for this glass mural focuses on a young family in the Mission. They are the future Chicanos or Latinx children whose families may have migrated to San Francisco in search of a better future. They are on Mission Street possibly celebrating Cinco de Mayo, Carnaval, or Día de los Muertos, along with the low-rider community, all a possibility. As a senior artist and grandfather, I'm hoping that when young people in the Mission see this mural and image that they see themselves and it makes them feel proud of their community and culture.

**Cultural Symbols**  
 The mural will feature various cultural symbols, including a sombrero, a maraca, and a guitar. It will also include references to the Mission District and the low-rider community.

**Muni References**  
 The mural will include references to Muni, including the word 'MUNIS' and the Muni logo. It will also include references to the Mission District and the low-rider community.

**Elevation View**  
 The mural will be installed on the South entrance of the Potrero Modernization Yard. It will be a combination of hand-painted with digital components.

**Hand-Crafted and Printed Glass**  
 The mural will be made of hand-made painting, digital artwork that will be digitally printed, manufactured in glass and installed on the South entrance of the Potrero Modernization Yard.

**Juan R. Fuentes**  
**Mariposas en la Misión**



POTRERO YARD MODERNIZATION PROJECT | MARIPOSA STAIRWELL  
ARTIST REVIEW PANEL TWO SUMMARY

**MEETING DATE**

August 29, 2024

**VOTING SELECTION PANELISTS**

Chris Jauregui, Vice President, Plenary Americas (shared vote with Yancey Clayton)  
Fátima Ramirez, Executive Director, Acción Latina  
John Angelico, Public Information Officer, SFMTA (shared vote with Kerstin Magary)  
Jolene Yee, Community Representative, Friends of Franklin Square Park  
Kerstin Magary, Deputy Program Manager, SFMTA (shared vote with John Angelico)  
Mary Chou, Civic Art Collection and Public Art Director, SFAC  
Mary Travis-Allen, Community Representative, American Indian Cultural District  
Rhiannon Evans MacFadyen, Curator, Artist, Consultant  
Trisha Lagaso Goldberg, Independent Curator  
Yancey Clayton, Principal/Associate Director, Arcadis IBI Group (shared vote with Chris Jauregui)

**PROCESS**

Four artist finalists presented their proposals for the Potrero Yard Modernization Mariposa Stairwell Public Art Project. The Artist Review Panel discussed the finalists' proposals and scored each artist on the following criteria (1= low score):

Artistic Merit (1-10)  
Relevant Skills and Experience (1-5)  
Meets Project and Civic Art Collection Goals (1-10)  
Appropriate to Site (1-5)

**RESULTS**

Josué Rojas	230
Jet Martinez	225
Juan R. Fuentes	201
Christopher Burch	186

**Artist Review Panel Two Composition**

**San Francisco Arts Commission**

*Mary Chou, Director of Public Art Program and Civic Art Collection*

**SFMTA Representatives**

*John Angelico, Public Information Officer, Building Progress Program*

*Kerstin Magary, Section Director, CSO Facilities and Real Property Management,*

*Deputy Building Progress Program Manager*

**Design Team Representatives**

*Yancey Clayton, Principal/Associate Director, Arcadis IBI Group*

*Chris Jauregui, Vice President, Plenary Americas*

**Arts Professionals**

*Rhiannon Evans MacFadyen, Curator, Artist, Consultant*

*Trisha Lagaso Goldberg, Artist and Independent Curator*

*Fátima Ramirez, Executive Director, Acción Latina*

**Community Representatives**

*Mary Travis-Allen, Potrero Neighborhood Working Group, American Indian Cultural District*

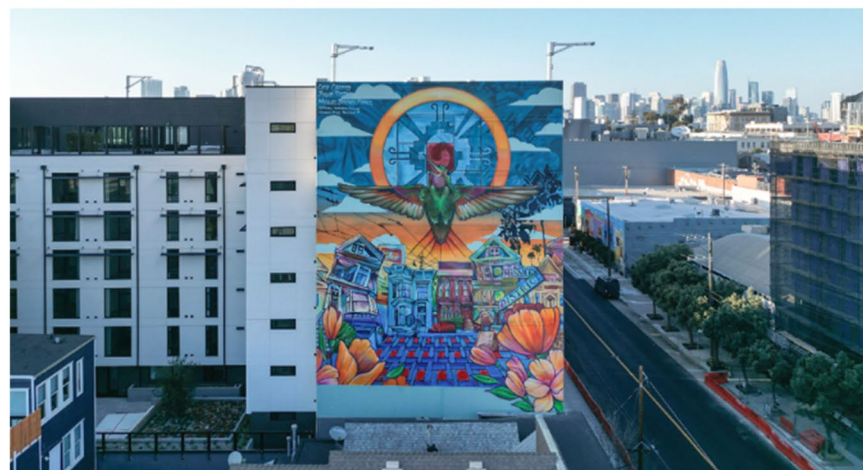
*Jolene Yee, Potrero Neighborhood Working Group, Friends of Franklin Square Park*



## Josué Rojas



As an artist, educator and Mission native, Josué Rojas has more than 20 years of experience in fine arts, community arts, arts leadership, and bilingual and ethnic media in the San Francisco Bay Area. Throughout his many endeavors, his work and vision have been characterized by a commitment to San Francisco's cherished values of community arts and media, civic engagement, social justice and empowerment for migrant communities and marginalized communities at large.





# Potrero Yard Modernization Project: A Transfer to Tomorrow Artist: Josué Rojas

*Transfer to tomorrow* is a site-specific tribute to the SF Muni workers, the East Mission Neighborhood — past present and future community and the state of the art transportation, housing and educational activities that will take place at the site. The new muni yard and housing will take shape in the context of the rich cultural & historical space that is San Francisco. In San Francisco, we hold a strong tradition of creative culture-bearing and art making. At the same time we are on the cutting edge of technology, innovation in sustainable green practices and the arts.

***Transfer to tomorrow: is a celebration, a tribute and a prayer for a more responsible tomorrow.***

**This mural invites the viewer to think about the natural world, the city of SF and where —and how— we source our energy and transportation.**

Artist Josué Rojas has designed a modern approach to a traditional artform. Embarking from the Salvadoran Folk Tapestry in the La Palma style, the artwork is filled with depictions of wildlife, animals, buses and the natural world. As a native of this neighborhood and a Muni rider throughout all of his youth, the artist specifically highlights the working class employees and ridership of the Muni System. The artist utilizes both realistic and posterized imagery for delivery of bright, fun colors. In addition, abstract patterns and formations are woven into a tapestry of color and flowing rainbow — a symbol of hope. This piece is an expression of joy, sure to both tap into nostalgia and inspire young people to know more about their own cultural and natural roots, including the natural history of San Francisco and the Bay Area.

*Transfer to tomorrow* is inspired by the history, current and future culture of the environment and transportation innovation. Muni is a vital service, providing equitable access to mobility and is seen as a vital lifeline for the city. An all-electric fleet of buses to be housed at the site represents a new dawn on the horizon for Muni, this neighborhood and the city of San Francisco — it is a tribute to past workers and an honor for future workers and riders of Muni.

The work will be made of hand-made painting, digital artwork that will be digitally printed/ manufactured in glass and installed on the South entryway of the Potrero Modernization Yard. The mural proposal is analog and digital, the final artwork will be a combination of hand-painted with digital components. The final image will be photographed and will be digitally printed on glass.

In preparing for the design of this piece, artist Josué Rojas spoke to neighbors and stakeholders of the project — Jonathan Corder, Executive Director of the association of the Rmaytush Ohlone, Jorge Elias, veteran SF Muni worker and union rep, Chris Cuadrado of Horizons unlimited youth services, Pendarvis Harshaw of KQED 'Rightnowish' and Rodrigo Duran, Executive Director of Carnaval SF — San Francisco's largest outdoor festival.

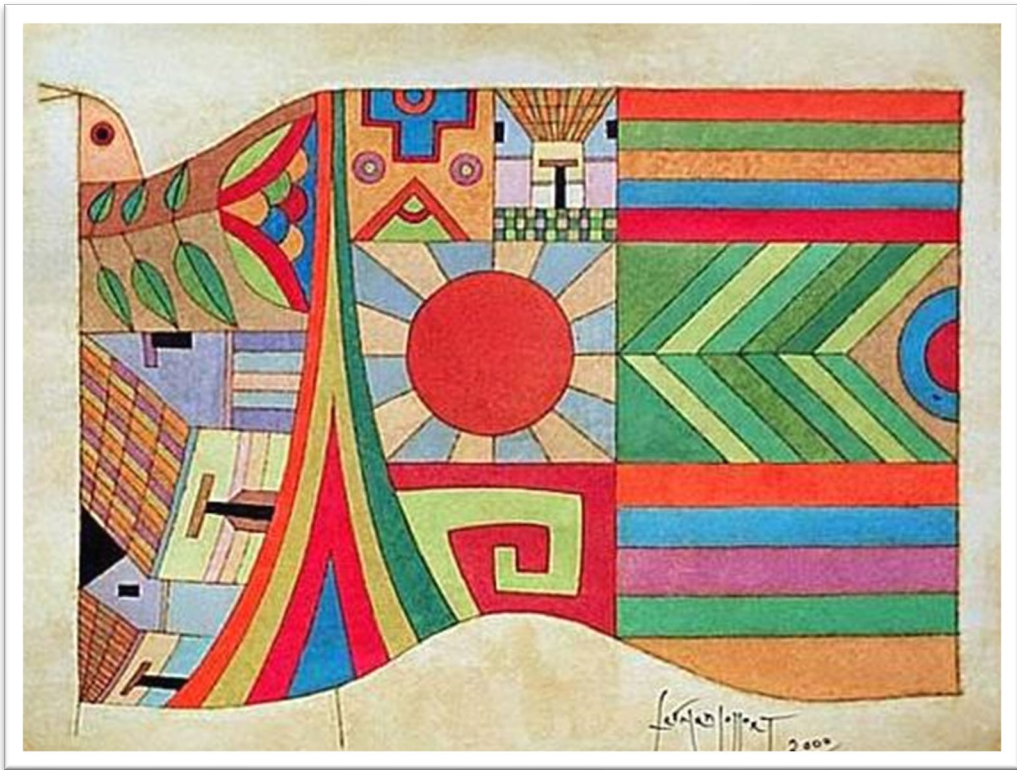
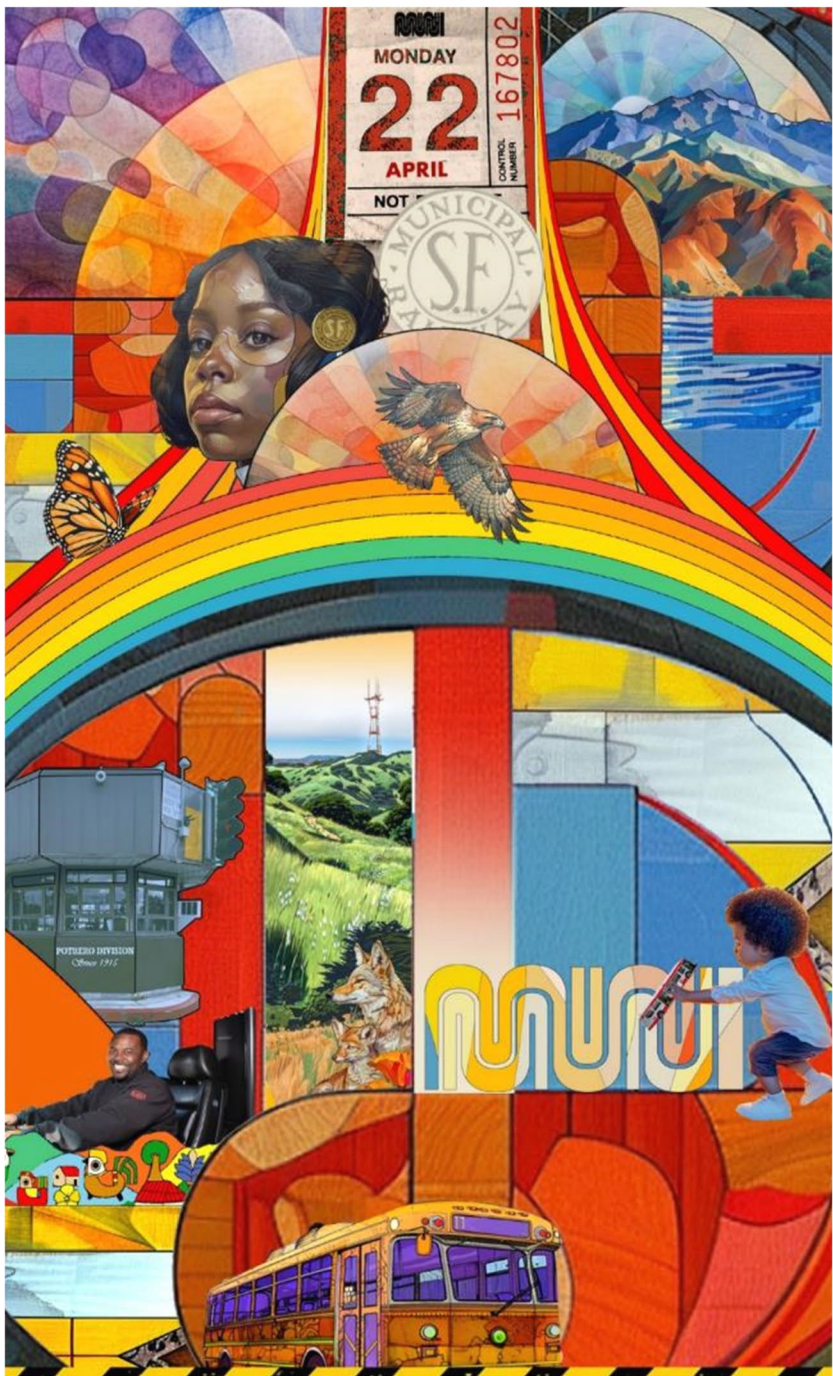


Sustainable Power:  
Hetch Hetchy

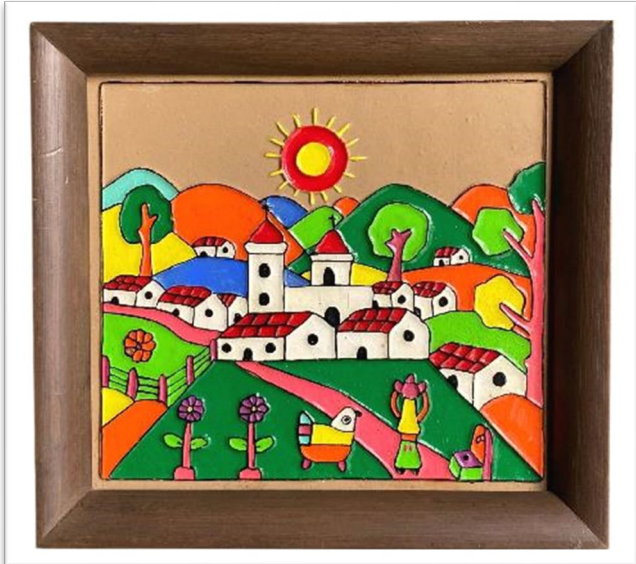


A focus on the future  
& honoring memory

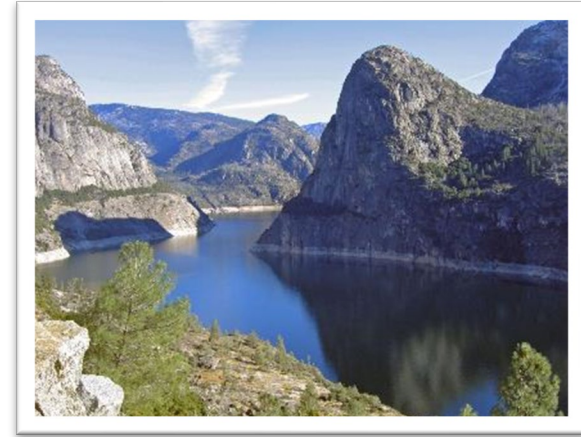




Fernando Llort  
*Herald of the Dawn*









Potrero Yard Modernization Public Art Project  
Mariposa Stairwell Integrated Glass Artwork  
Recommended Artist + Proposal  
Josué Rojas | *A Transfer to Tomorrow*





## Potrero Yard Modernization Project Public Art Timeline

### Glass Artworks

VAC Approval	September 19
Arts Commission Approval	October 7
Artist Contracting	November 30
Design Development	December 2024 – December 2025

### Tile Artwork

Artist Review Panel One	Week of January 13, 2025
Artist Finalist Orientation	Week of January 27
Finalist Proposals Due	March 24
Public Comment Display	April 21 – May 5
Artist Review Panel Two	Week of May 12
VAC Approval	May 21
Art Commission Approval	June 2
Artist Contracting	July 2025

December 2024 – January 2026*	Artwork Design Development phase
January 2026 – June 2026*	Artwork Construction Document phase
July 2026 – March 2027*	Artwork fabrication
Summer/Fall 2027*	Artwork installation

*\*Contingent on project construction schedule. Subject to change.*





SFMTA

# Working Group Updates

Caroline Cabral, SFMTA  
Jackson Smith, PNC



# BUILDING PROGRESS

## New Seat – Youth

- New Youth Seat
  - Students in 9th-12th grade who live and attend school in the city.
  - Priority given to those in ZIP Codes near the project site: 94107, 94110, 94103, and 94124.
- Applications closed on 9/30
  - Outreach: district e-news, on-campus flyers, SF Youth Commission, neighborhood tabling
  - Ten applicants
- Next Steps
  - Interviews the week of October 6
  - Final decisions in time for November onboarding

### Potrero Yard Modernization Project

## **Working Group Youth Seat**



### **Get Involved**

- Youth **ages 14-19** or **grades 9-12** living and attending school in San Francisco. Zip codes **94107, 94110, 94103 and 94124** will be prioritized.
- Meetings are held on the second Tuesday of the month from 5:30-7:30 p.m. with dinner provided.

### **Deadline Extended**

Applications are now due  
**Monday, September 30, 2024 at 11:59 p.m. PT.**

### **Questions?**

Reach out to Caroline Cabral at  
[Caroline.Cabral@SFMTA.com](mailto:Caroline.Cabral@SFMTA.com)

### **What is it?**

A bus yard and community housing project is happening in the Mission. **The Potrero Yard Modernization Project** will replace the obsolete two-story maintenance building and bus yard with a modern bus maintenance and storage garage. The project includes up to 465 units of affordable housing. The Potrero Yard Neighborhood Working Group brings community members, SFMTA staff and the Potrero Neighborhood Collective developer team together to shape public outreach, foster communications and promote community engagement. **The Working Group wants to add a dedicated Youth Seat to incorporate valuable engagement from the perspective of local youth.**

### **Apply**



[SFMTA.com/PotreroYardNeighborhood](https://SFMTA.com/PotreroYardNeighborhood)







SFMTA

# Project Update

Chris Lazaro, PNC



# Current Legislative Action: PDA Amendment

- Second amendment to the Predevelopment Agreement (PDA) to extend the term of the PDA to **July 31, 2025**
- Increase the maximum Termination Payment by \$5,556,566
  - New total maximum = **\$15,546,566**

## Legislative schedule for PDA second amendment

9/24/2024	10/1/2024	10/9/2024	10/22/2024
BOS Legislation Introduction	SFMTA Board	BOS Budget and Finance Committee	Full Board of Supervisors





## BUILDING PROGRESS

# Future Legislative Action: Project Agreements

Project Agreements will be staggered to match Project phasing.

Bus Facility ① will be built first, scheduled to start construction in 2025

- Timing of form of the agreement: Dec. 2024

Housing and Commercial Components are anticipated to be built in phases

- Each phase is dependent upon available funding and market feasibility.
- Bryant Street Affordable Housing ② construction could start as soon as 2027.
- Podium Housing, ③A ③W located on top of the bus facility, could be built no sooner than 2029, following completion of the bus yard.
- Timing of agreements: Spring 2025



# BUILDING PROGRESS

## Overall Project Schedule



✓ SFMTA planning and community outreach and engagement to advance the Potrero Yard Modernization Project

✓ Project pre-planning completed  
 ✓ PNC selected as project Development Team

- ✓ Entitlements granted
- ✓ Updated the Environmental Impact Report (EIR) as part of California Environmental Quality Act (CEQA) requirements
- Contractor procurement for bus yard
- Entering into Project Agreements with city
- Housing developers identify and secure funding for Phase 1 of housing

- Construct new bus yard
- Operations temporarily relocated
- Conduct Contractor Procurement for Phase 1 of housing
- Housing developers continue identifying and securing funding for Phase 1 of housing

- Bus yard opens
- Construction of housing, retail spaces, and other uses





SFMTA

# Community Engagement Update

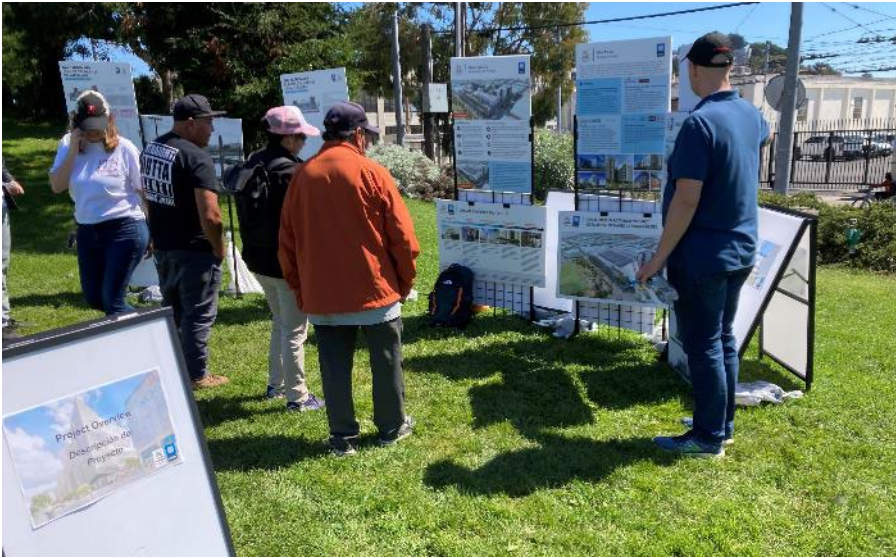
Myrna Ortiz, PNC



# BUILDING PROGRESS

## Community Meeting: Saturday, Sept 14, 2024

On Saturday, September 14, the SFMTA and PNC held a Community Walking Tour of the Potrero Yard.



Neighborhood Collective



# BUILDING PROGRESS

# Community Engagement: Aug & Sept 2024

The SFMTA and PNC participated in the following community activities in August and September 2024:



**Sunday Streets Mission  
on Valencia Street  
Aug. 25**

**Fiesta de las  
Américas on 24th  
Street / Calle 24  
Sept. 21**





# BUILDING PROGRESS

# Community Engagement: Oct 2024

The SFMTA and PNC are looking forward to participating in the following community activities in October 2024:



**Franklin Square  
Clean Up Day**  
Oct. 5

**Coming Up!**  
**Potrero Hill Festival**  
Saturday, October 19,  
10am – 4pm



**Any additional community activities that the Working Group recommends that the SFMTA and PNC participate?**







SFMTA

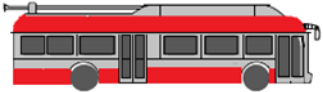
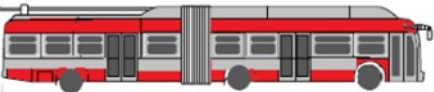
# Bus Yard Updates

Chris Lazaro, SFMTA



## BUILDING PROGRESS

# Bus Yard Capacity Updates

	Nov 2022	Oct 2024
40'  40'	<b>53</b>	<b>153</b> (+100)
60'  60'	<b>160</b>	<b>93</b> (-67) (maintains current capacity)
Total Buses	<b>213</b>	<b>246</b> (+33)
Total Staff	<b>800+</b>	<b>1,100+</b> (Not all staff on site at same time)





SFMTA

# Next Steps

John Angelico, SFMTA



## BUILDING PROGRESS

# Next Steps

PNC and the SFMTA have the following community outreach activities planned (subject to change):

- **Potrero Hill Festival: October 19, 2024** (location TBD)
- **Next Working Group meeting (potential): November 19, 2024** (Hybrid) – 3<sup>rd</sup> Tuesday of November

Please let us know if there are local residents, businesses, organizations, or other community members that may be interested in learning more the Project.





# Public Comment

- Do any members of the public wish to comment?
- If you are joining via a computer, please use the raise your hand feature and we will unmute you.
- Joining by phone? We will unmute folks one at a time and call out the last four digits of your phone number.
- Please state your name and organizational affiliation.

# BUILDING PROGRESS

## Contact Us

### John Angelico

Public Information Officer

[John.Angelico@SFMTA.com](mailto:John.Angelico@SFMTA.com)

415.646.4783

### Bonnie Jean von Krogh

Building Progress Public Affairs Manager

[BonnieJean.vonKrogh@SFMTA.com](mailto:BonnieJean.vonKrogh@SFMTA.com)

415.646.2447

### Chris Lazaro

Program Director in Building Progress - Potrero Yard Modernization Project

[Chris.Lazaro@SFMTA.com](mailto:Chris.Lazaro@SFMTA.com)

### Potrero Neighborhood Collective

[PotreroYard@plenaryamericas.com](mailto:PotreroYard@plenaryamericas.com)

Sign Up for Project Updates

[SFMTA.com/PotreroYard](https://www.sfmta.com/PotreroYard)

