



SFMTA

March 17, 2023

Engineering Public Hearing

<https://sfmta.com/enghearing>

Conference Line: 1-415-915-0757

Conference ID: 177 427 087#

Please sign up to speak at [SFMTA.com/ENGSpeakerCard](https://sfmta.com/ENGSpeakerCard)

Proposed Street Changes

How does a proposed street change get approved?



<https://www.sfmta.com/committees/engineering-public-hearings>

Public Hearing Decision Posting

Results will be posted by
5 PM next Friday

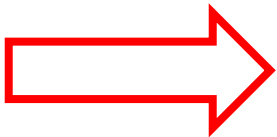
<https://www.sfmta.com/calendar/engineering-public-hearing-meeting-march-17-2023-3>

Referenced Materials

[Engineering Public Hearing Agenda, November 4, 2022](#)

 [Engineering Public Hearing Agenda, November 4, 2022](#)

 [Engineering Public Hearing Results, November 4, 2022](#)





SFMTA

March 17, 2023

Engineering Public Hearing

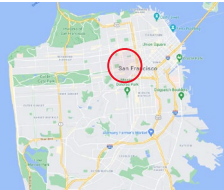
<https://sfmta.com/enghearing>

Conference Line: 1-415-915-0757

Conference ID: 177 427 087#

Please sign up to speak at [SFMTA.com/ENGSpeakerCard](https://sfmta.com/ENGSpeakerCard)

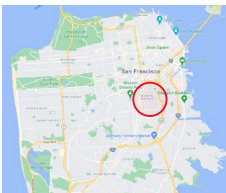
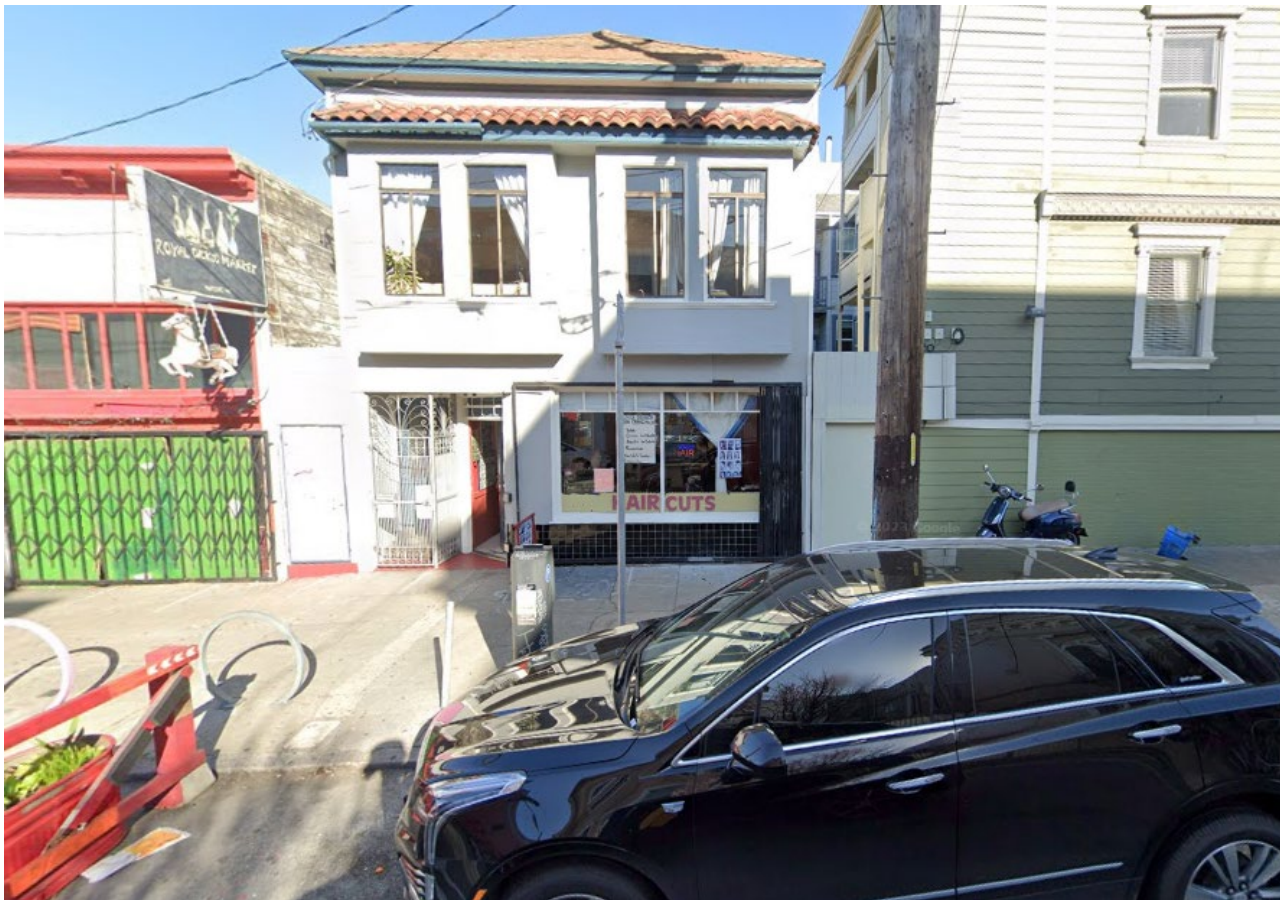
1. ESTABLISH - RESIDENTIAL PERMIT PARKING AREA HV (Eligibility only, no signs)
330-350 Gough Street (Supervisor District 5) (Requires approval by the SFMTA Board) Gerry Porras,
gerry.porras@sfmta.com



Conference Line: **1-415-915-0757** (conference ID: 177 427 087#)
To comment on an item, press *5 to raise hand and *6 to unmute when prompted.

2. ESTABLISH - RESIDENTIAL PERMIT PARKING AREA I (Eligibility only, no signs)

3364-3366 19th Street (Supervisor District 9) (Requires approval by the SFMTA Board) Gerry Porras,
gerry.porras@sfmta.com

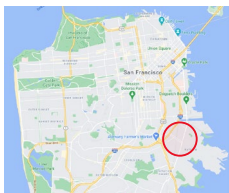
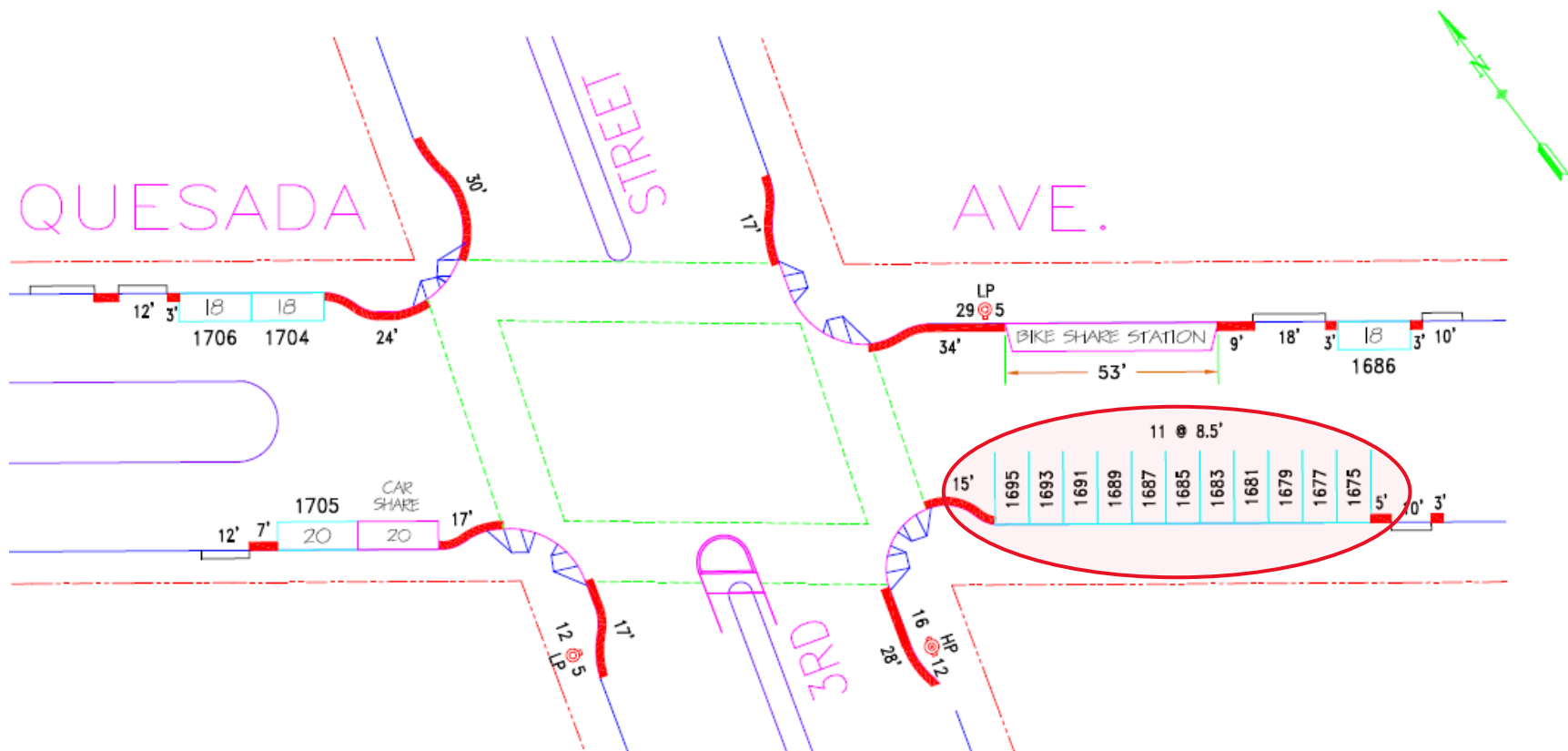


Conference Line: **1-415-915-0757** (conference ID: 177 427 087#)

To comment on an item, press *5 to raise hand and *6 to unmute when prompted.

3. RESCIND – PERPENDICULAR PARKING ESTABLISH – PARALLEL PARKING

Quesada Avenue, south side, at 15 feet to 108.5 feet east of Third Street (Supervisor District 10) (Requires approval by the SFMTA Board) Gerry Porras, gerry.porras@sfmta.com

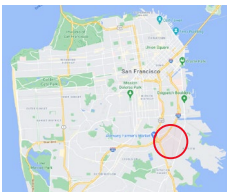
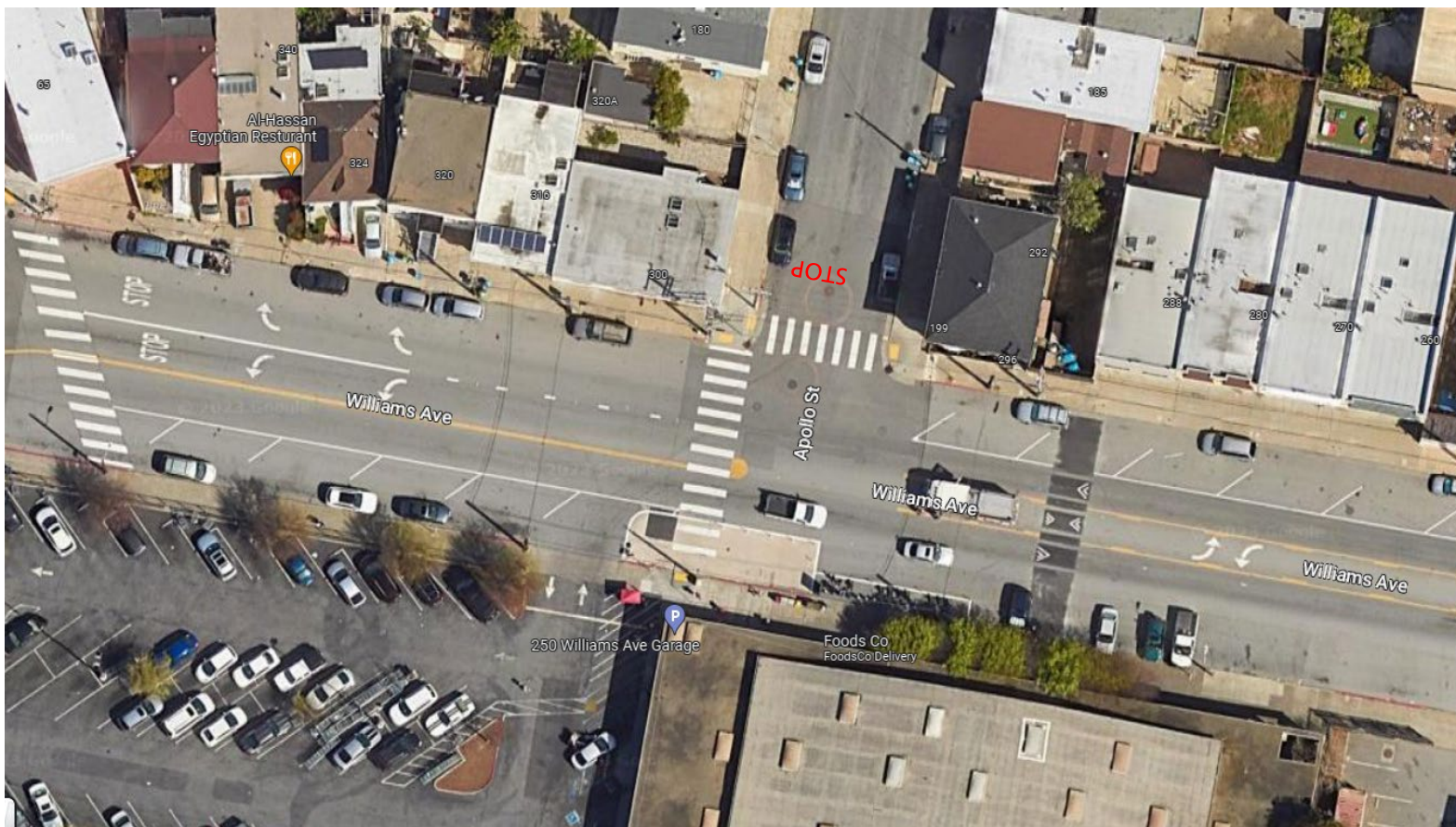


Conference Line: **1-415-915-0757** (conference ID: 177 427 087#)

To comment on an item, press *5 to raise hand and *6 to unmute when prompted.

4. ESTABLISH – STOP SIGN

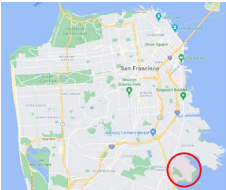
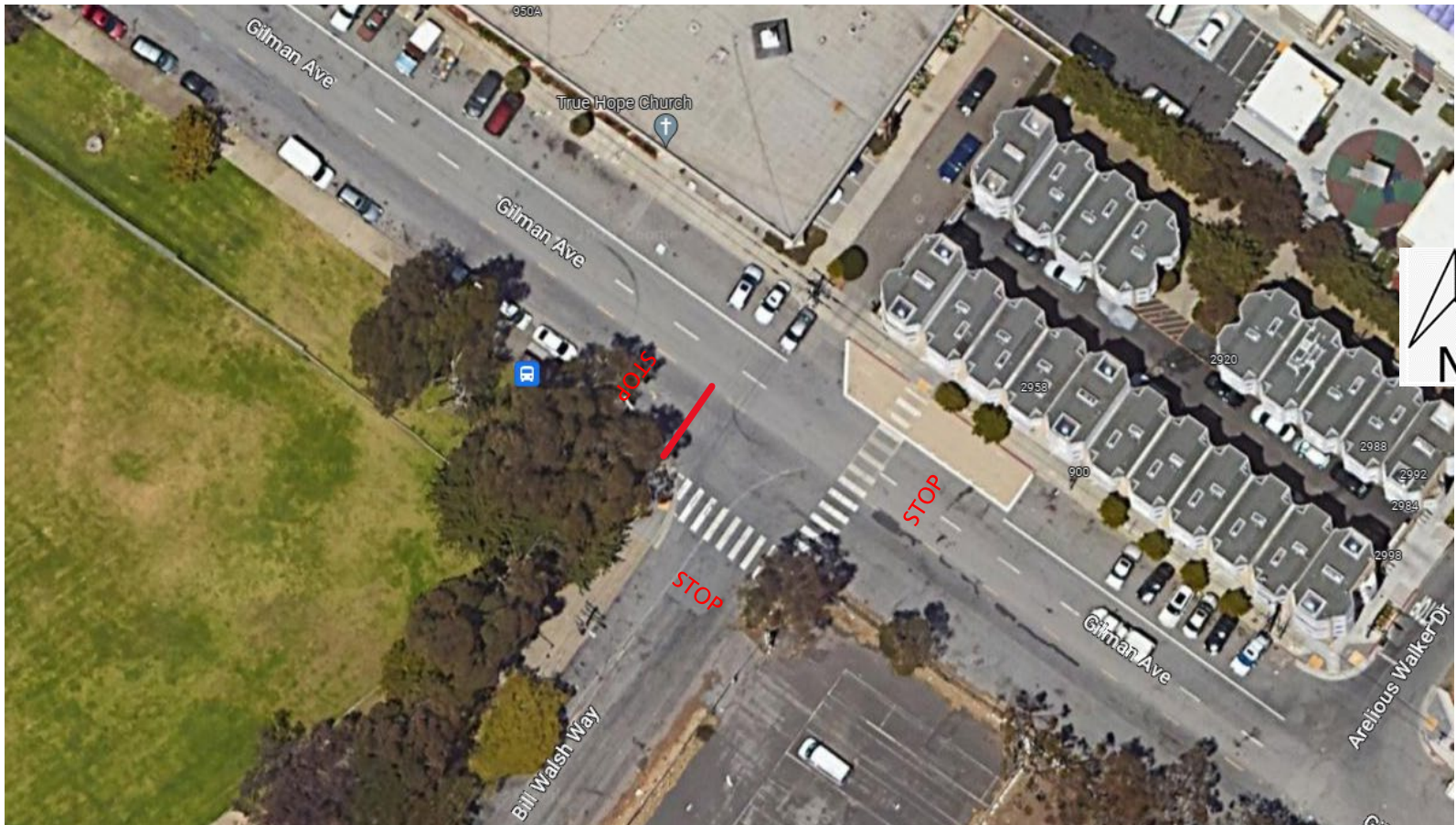
Apollo Street, southbound, at Williams Avenue (Supervisor District 10) (Approvable by the City Traffic Engineer) Edward Tang, edward.tang@sfmta.com



Conference Line: **1-415-915-0757** (conference ID: 177 427 087#)
To comment on an item, press *5 to raise hand and *6 to unmute when prompted.

5. ESTABLISH – STOP SIGNS

Gilman Avenue at Bill Walsh Way, all approaches making this intersection an all-way STOP (Supervisor District 10) (Approvable by the City Traffic Engineer) André Wright, andre.wright@sfmta.com

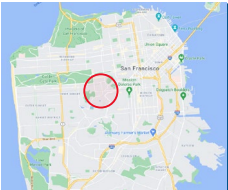


Conference Line: **1-415-915-0757** (conference ID: 177 427 087#)

To comment on an item, press *5 to raise hand and *6 to unmute when prompted.

6. ESTABLISH – STOP SIGN

Belvedere Street, northbound, at Parnassus Avenue (Supervisor District 8) (Approvable by the City Traffic Engineer) Edward Tang, edward.tang@sfmta.com

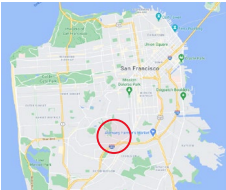
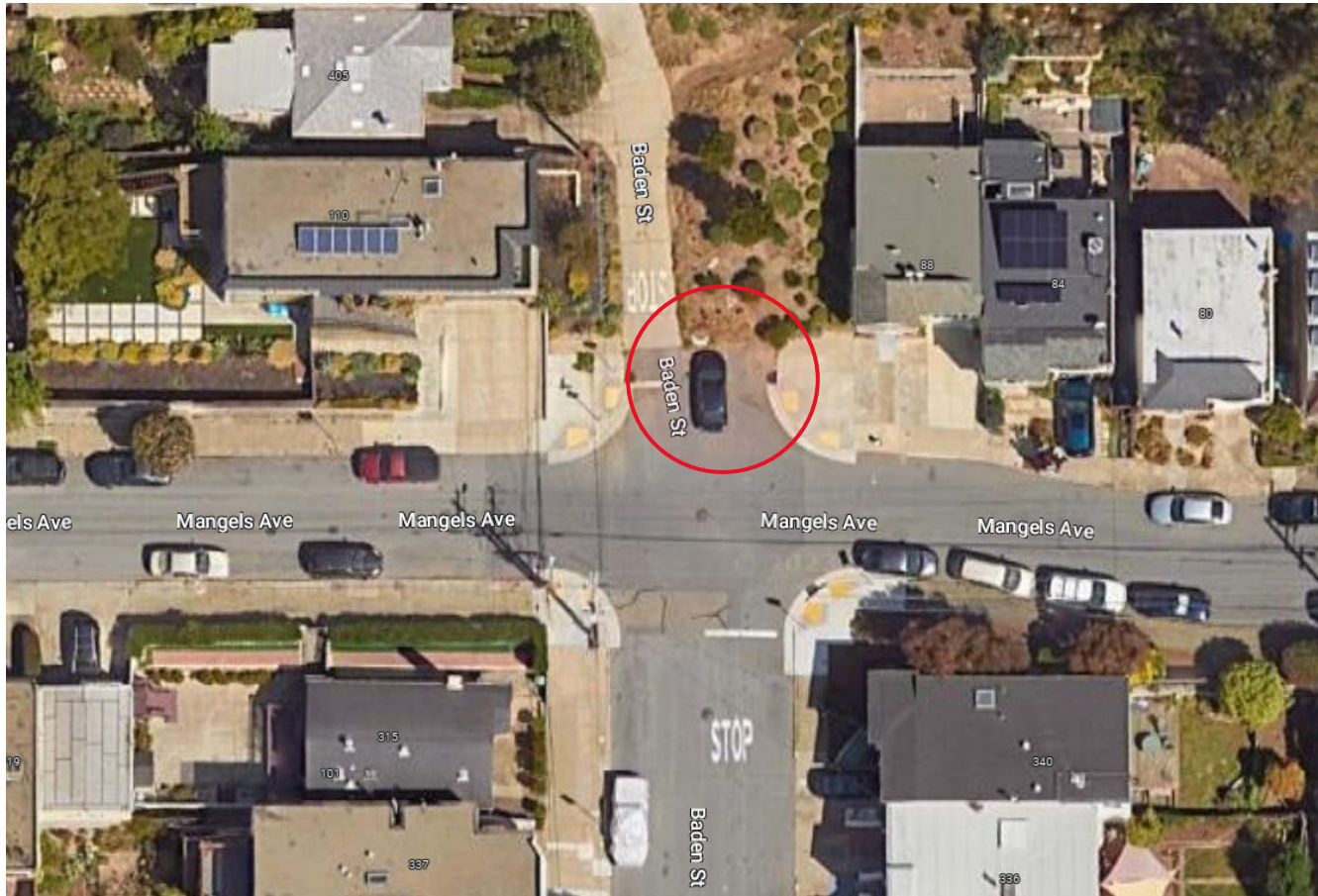


Conference Line: **1-415-915-0757** (conference ID: 177 427 087#)

To comment on an item, press *5 to raise hand and *6 to unmute when prompted.

7. ESTABLISH – NO PARKING ANY TIME

Mangels Avenue, north side, from Baden Street east curb line to 19 feet westerly (Supervisor District 8)
(Requires approval by the SFMTA Board) Edward Tang, edward.tang@sfmta.com

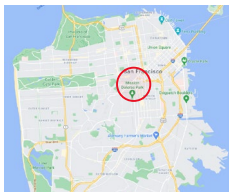
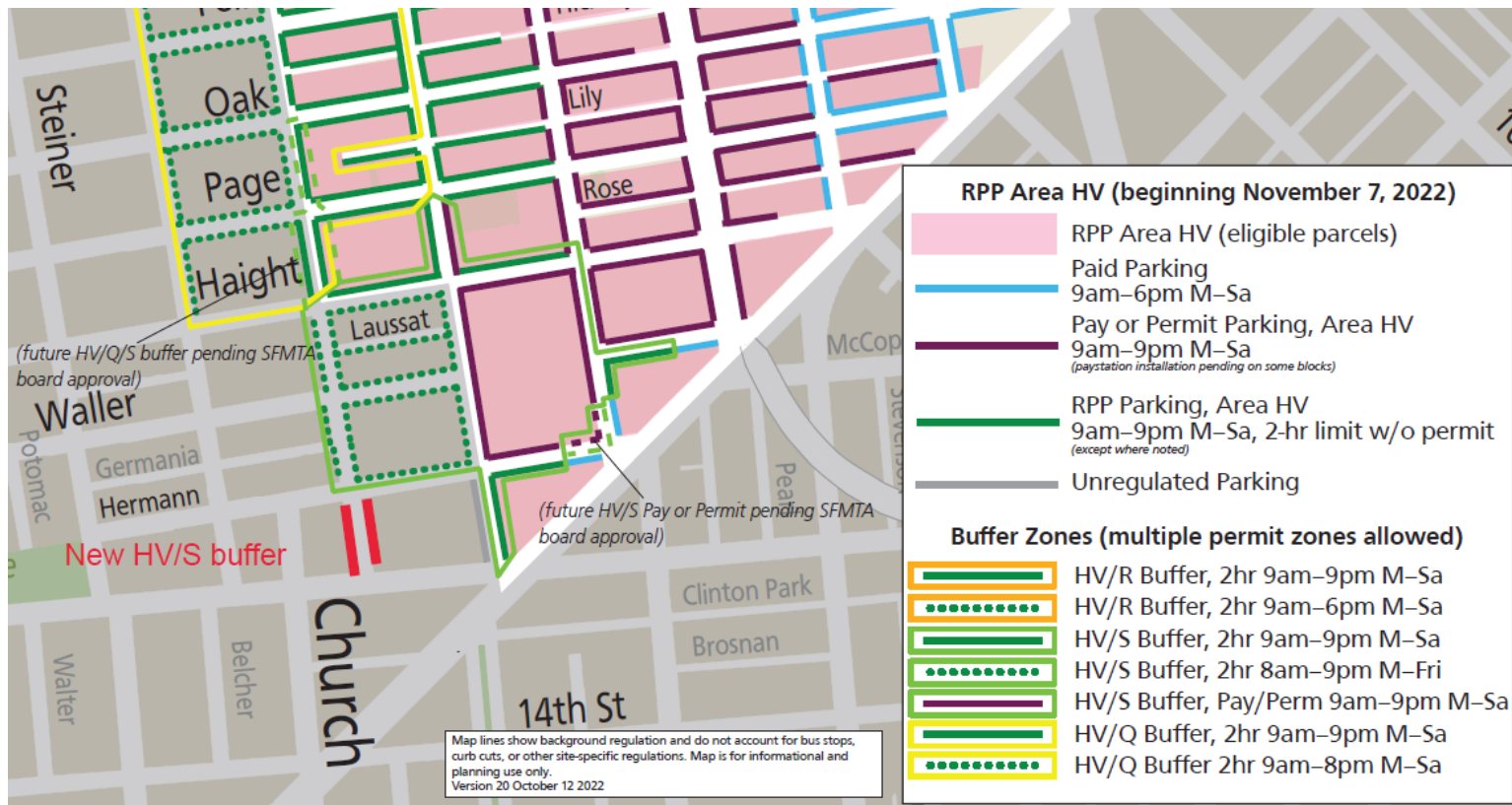


Conference Line: **1-415-915-0757** (conference ID: 177 427 087#)

To comment on an item, press *5 to raise hand and *6 to unmute when prompted.

8. RESCIND – 2-HOUR PARKING, MONDAY THROUGH FRIDAY, 8 AM TO 9 PM, EXCEPT AREA S PERMITS ESTABLISH – 2-HOUR PARKING, MONDAY THROUGH FRIDAY, 8 AM TO 9 PM, EXCEPT AREA S AND AREA HV PERMITS

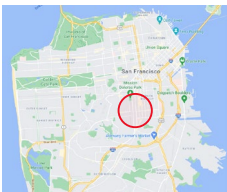
Webster Street, west side and east side, between Hermann Street and Hermann Street south terminus (Supervisor District 8) (Requires approval by the SFMTA Board) Raynell Cooper, raynell.cooper@sfmta.com



Conference Line: **1-415-915-0757** (conference ID: 177 427 087#)
To comment on an item, press *5 to raise hand and *6 to unmute when prompted.

9. ESTABLISH – STOP SIGNS

Castro Street, northbound and southbound, at 21st Street (Supervisor District 8) (Approvable by the City Traffic Engineer) Edward Tang, edward.tang@sfmta.com

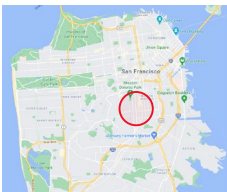


Conference Line: **1-415-915-0757** (conference ID: 177 427 087#)

To comment on an item, press *5 to raise hand and *6 to unmute when prompted.

10. ESTABLISH – RED ZONE

Sanchez Street, west side, from 19th Street to 15 feet northerly (Supervisor District 8) (Approvable by the City Traffic Engineer) Andy Thornley, andy.thornley@sfmta.com

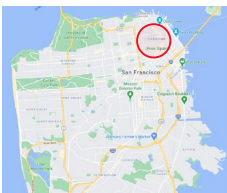


Conference Line: **1-415-915-0757** (conference ID: 177 427 087#)

To comment on an item, press *5 to raise hand and *6 to unmute when prompted.

11. ESTABLISH – NO PARKING ANY TIME

Mark Lane, west side and east side, from Bush Street to Harlan Place (Supervisor District 3) (Requires approval by the SFMTA Board) Simon Qin, simon.qin@sfmta.com

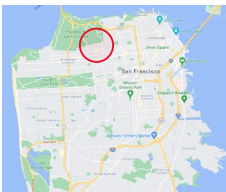
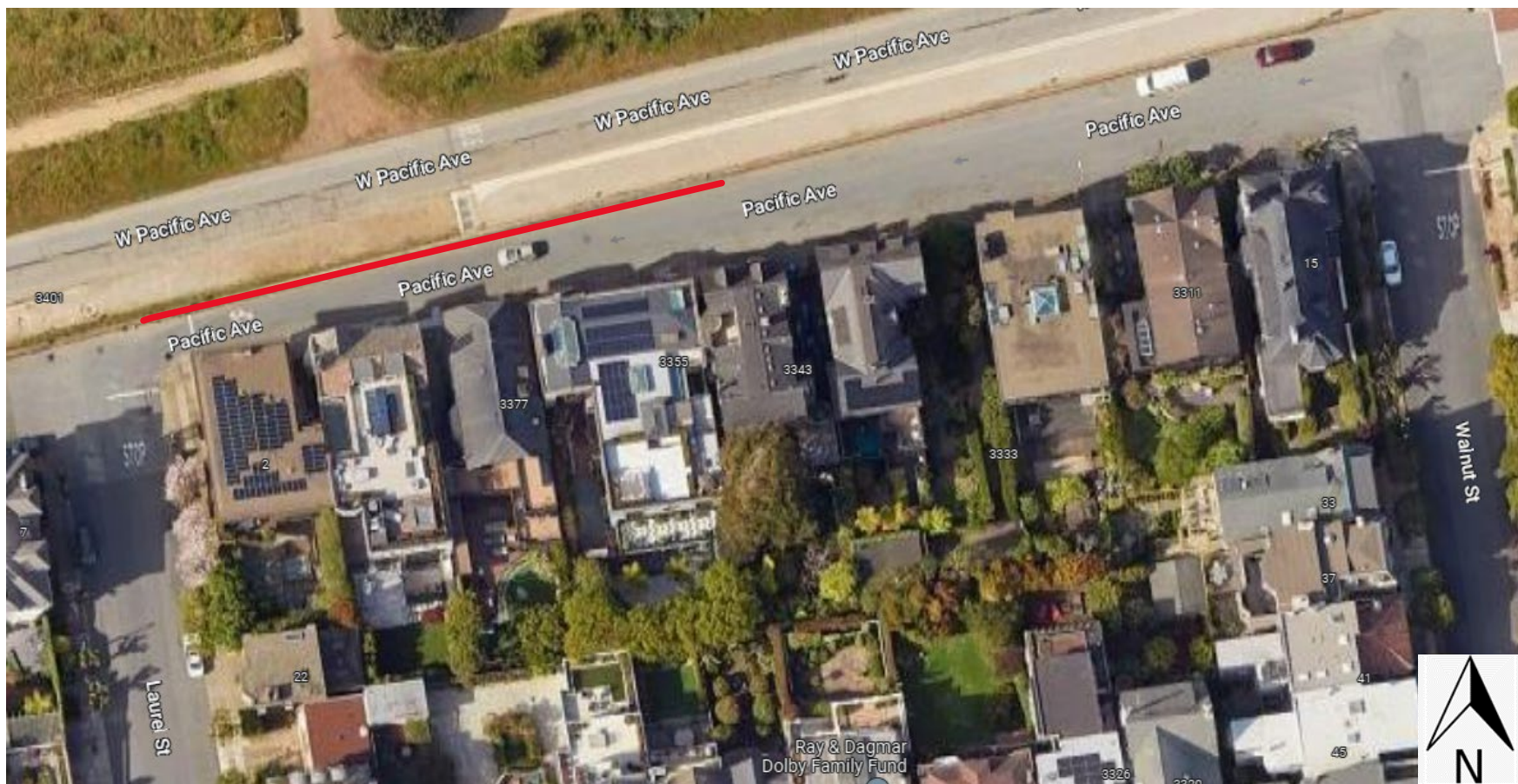


Conference Line: **1-415-915-0757** (conference ID: 177 427 087#)

To comment on an item, press *5 to raise hand and *6 to unmute when prompted.

12. ESTABLISH – TOW AWAY, NO PARKING ANY TIME

Pacific Avenue, north side, from 200 feet east of Laurel Street to 220 feet westerly (220-ft zone) (Supervisor District 2) (Requires approval by the SFMTA Board) Simon Qin, simon.qin@sfmta.com



Conference Line: **1-415-915-0757** (conference ID: 177 427 087#)

To comment on an item, press *5 to raise hand and *6 to unmute when prompted.

13(a). ESTABLISH – CLASS IV BIKEWAY (PARKING PROTECTED BIKEWAY)

Bayshore Boulevard, northbound and southbound, between Silver Avenue and Oakdale Avenue (reclassifying existing Class II bike lanes to Class IV Bikeway) (Approvable by the City Traffic Engineer)

13(b). ESTABLISH – TRANSIT BOARDING ISLAND

Bayshore Boulevard, east side, from 107 feet to 132 feet north of Cortland Avenue (extends existing island 25 feet)
(Approvable by the City Traffic Engineer)

13(c). ESTABLISH – TOW-AWAY, NO STOPPING ANY TIME

Bayshore Boulevard, east side, from Marengo Street to Waterloo Street (removes 9 parking spaces)

Bayshore Boulevard, east side, from Flower Street to Oakdale Avenue (removes 6 parking spaces)

(Requires approval by the SFMTA Board)

13(d). ESTABLISH – TOW-AWAY, NO PARKING ANY TIME

A. Bayshore Boulevard, east side, from 246 feet to 366 feet north of Cortland Avenue (daylighting and low-pressure fire hydrant, removes 4 parking spaces)

B. Bayshore Boulevard, east side, from 456 feet to 516 feet north of Cortland Avenue (low-pressure fire hydrant, removes 3 parking spaces)

C. Bayshore Boulevard, east side, from 300 feet to 338 feet south of Flower Street (removes 2 parking spaces)

D. Bayshore Boulevard, east side, from 157 feet to 211 feet south of Flower Street (removes 1 parking space)

E. Bayshore Boulevard, west side, from Oakdale Avenue to 123 feet southerly (removes 1 parking space)

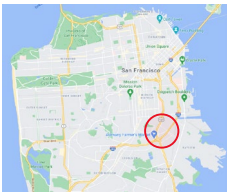
F. Bayshore Boulevard, west side, from 161 feet to 305 feet south of Oakdale Avenue (driveway clearance and low-pressure fire hydrant, removes 4 parking spaces and shortens existing green zone)

G. Bayshore Boulevard, west side, from 386 feet to 679 feet south of Oakdale Street (driveway clearance and low-pressure fire hydrant, removes 9 parking spaces)

H. Bayshore Boulevard, west side, from Cortland Avenue to 103 feet northerly (removes 4 parking spaces)

I. Bayshore Boulevard, west side, from 346 feet to 366 feet north of Cortland Avenue (driveway clearance, removes 1 parking space)

J. Bayshore Boulevard, west side, from 395 feet to 522 feet north of Cortland Avenue (driveway clearance, removes 2 parking spaces) (Requires approval by the SFMTA Board)



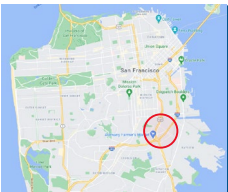
Conference Line: **1-415-915-0757** (conference ID: 177 427 087#)

To comment on an item, press *5 to raise hand and *6 to unmute when prompted.

13(e). ESTABLISH – WHITE ZONE, PASSENGER LOADING, 8:30 AM TO 7:00 PM, EVERYDAY
Bayshore Boulevard, west side, from 522 feet to 604 feet north of Cortland Avenue (Approvable by the City Traffic Engineer)

13(f). ESTABLISH – YELLOW ZONE, COMMERCIAL LOADING, 9:00 AM TO 6:00 PM, MONDAY THROUGH SATURDAY
Bayshore Boulevard, east side, from 112 feet to 194 feet north of Cortland Avenue (moves existing commercial loading zone 20 feet south)
Bayshore Boulevard, west side, from 305 feet to 386 feet south of Oakdale Avenue
(Approvable by the City Traffic Engineer)

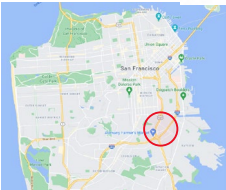
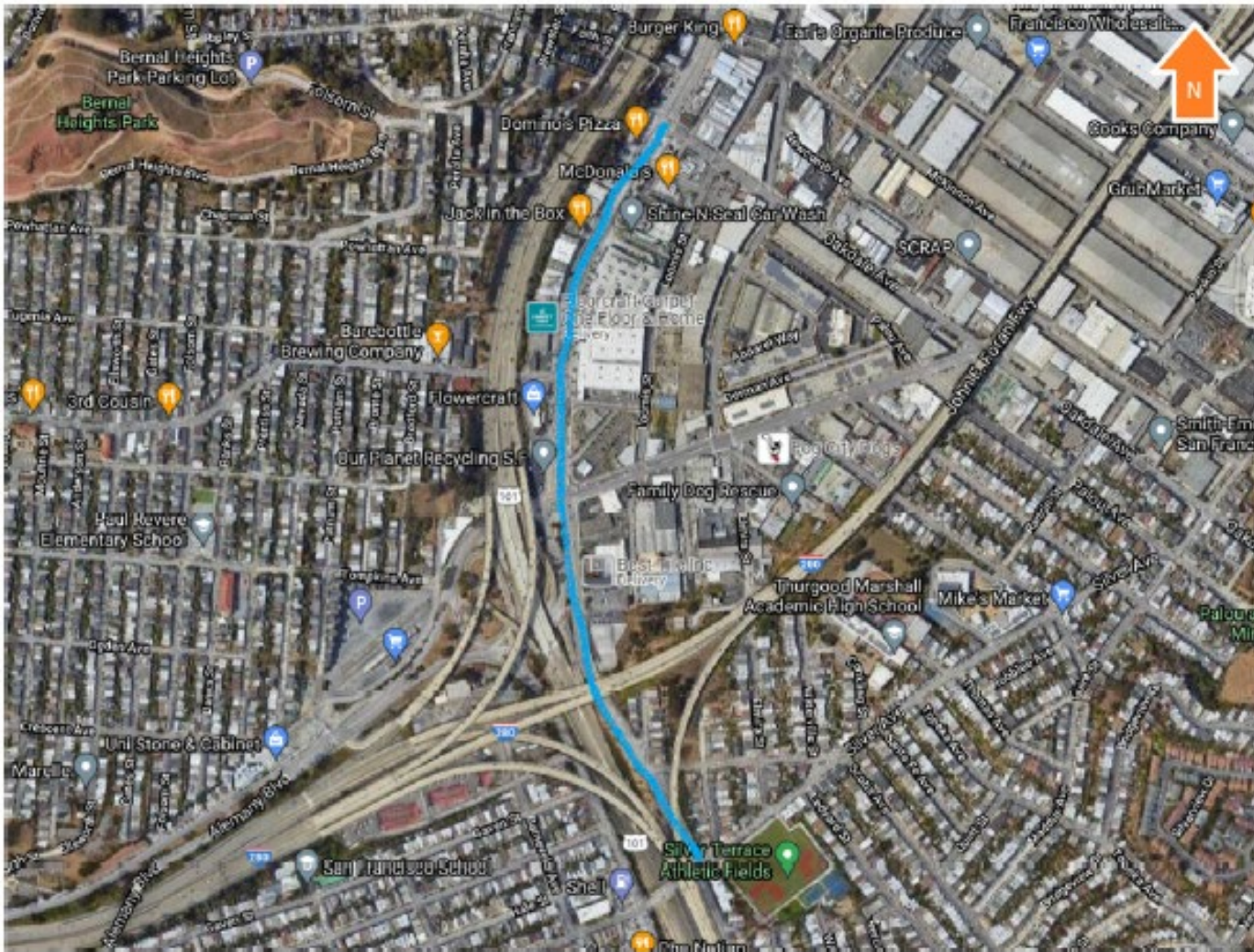
13(g). ESTABLISH – TRAFFIC ISLAND
Bayshore Boulevard from Cortland Avenue to Oakdale Avenue (new concrete median, removes center lane and prevents left turns except at intersections) (Approvable by the City Traffic Engineer)
(Supervisor Districts 9 and 10) Jonathan Chimento, jonathan.chimento@sfmta.com



Conference Line: **1-415-915-0757** (conference ID: 177 427 087#)

To comment on an item, press *5 to raise hand and *6 to unmute when prompted.

Aerial Map Bayshore from Silver to Oakdale



Conference Line: **1-415-915-0757** (conference ID: 177 427 087#)

To comment on an item, press *5 to raise hand and *6 to unmute when prompted.

14(a). ESTABLISH – SPEED CUSHIONS

- A. Cayuga Avenue, between Santa Ynez Avenue and San Juan Avenue (1 3-lump speed cushion)
- B. Cayuga Avenue, between San Juan Avenue and Santa Rosa Avenue (2 3-lump speed cushions)
- C. Cayuga Avenue, between Santa Rosa Avenue and Cotter Street (1 3-lump speed cushion)
- D. Cayuga Avenue, between Lamartine Street and Danton Street (1 3-lump speed cushion)

14(b). ESTABLISH – RIGHT TURN ONLY, EXCEPT BICYCLES

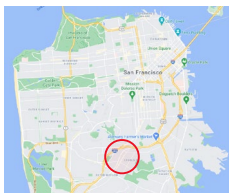
Cayuga Avenue, northbound and southbound, at Geneva Avenue

14(c). ESTABLISH – NO LEFT TURN

Geneva Avenue, eastbound, at Cayuga Avenue

14(d). ESTABLISH – RED ZONE

- A. Cayuga Avenue, east side, from Cotter Street to 15 feet northerly (for painted safety zone, removes one unmetered parking space)
 - B. Cayuga Avenue, west side, from Cotter Street to 15 feet southerly (for painted safety zone, removes one unmetered parking space)
 - C. Cotter Street, south side, from Cayuga Avenue to 10 feet westerly (for painted safety zone, removes one unmetered parking space)
 - D. Cotter Street, north side, from Cayuga Avenue to 10 feet easterly (for painted safety zone, removes one unmetered parking space)
- (Supervisor District 11) (Approvable by the City Traffic Engineer) Ellen Robinson, ellen.robinson@sfmta.com

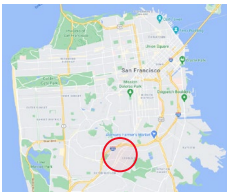
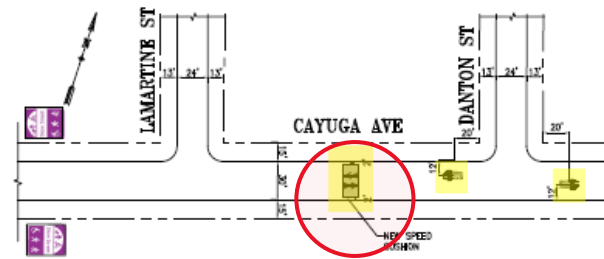
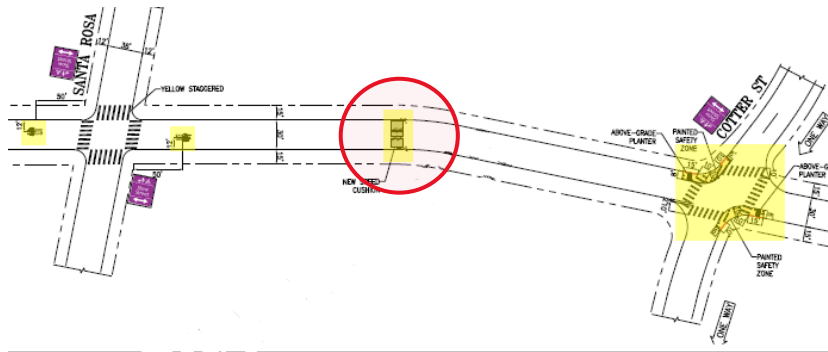
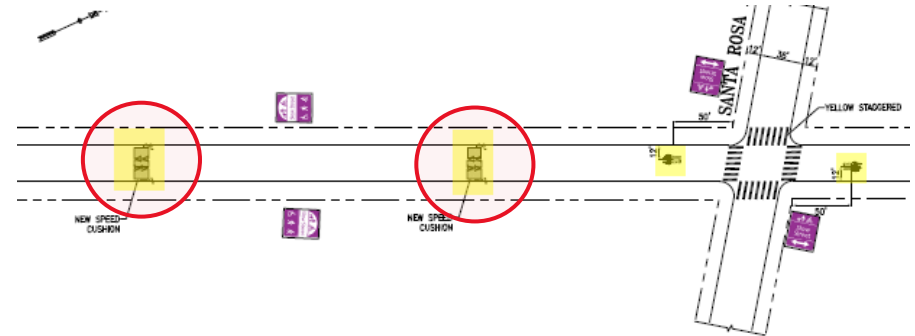
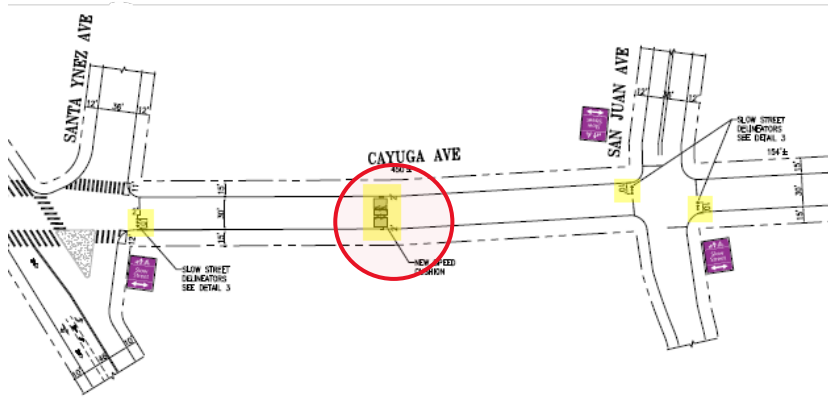


Conference Line: **1-415-915-0757** (conference ID: 177 427 087#)

To comment on an item, press *5 to raise hand and *6 to unmute when prompted.

14(a). ESTABLISH – SPEED CUSHIONS

- A. Cayuga Avenue, between Santa Ynez Avenue and San Juan Avenue (1 3-lump speed cushion)
- B. Cayuga Avenue, between San Juan Avenue and Santa Rosa Avenue (2 3-lump speed cushions)
- C. Cayuga Avenue, between Santa Rosa Avenue and Cotter Street (1 3-lump speed cushion)
- D. Cayuga Avenue, between Lamartine Street and Danton Street (1 3-lump speed cushion)

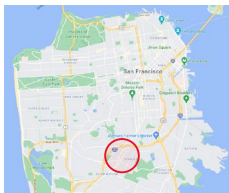
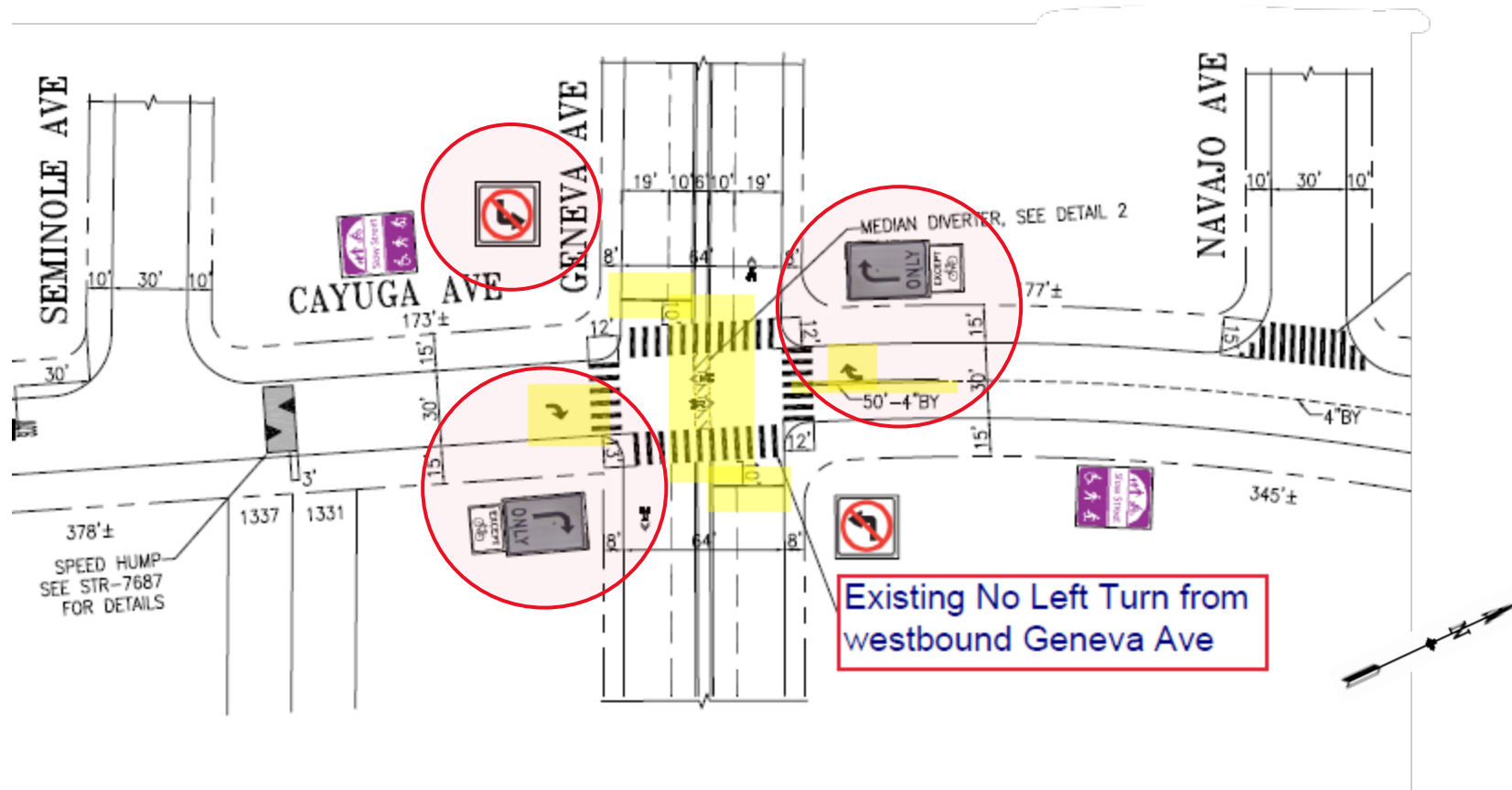


Conference Line: **1-415-915-0757** (conference ID: 177 427 087#)

To comment on an item, press *5 to raise hand and *6 to unmute when prompted.

14(b). ESTABLISH – RIGHT TURN ONLY, EXCEPT BICYCLES
Cayuga Avenue, northbound and southbound, at Geneva Avenue

14(c). ESTABLISH – NO LEFT TURN
Geneva Avenue, eastbound, at Cayuga Avenue

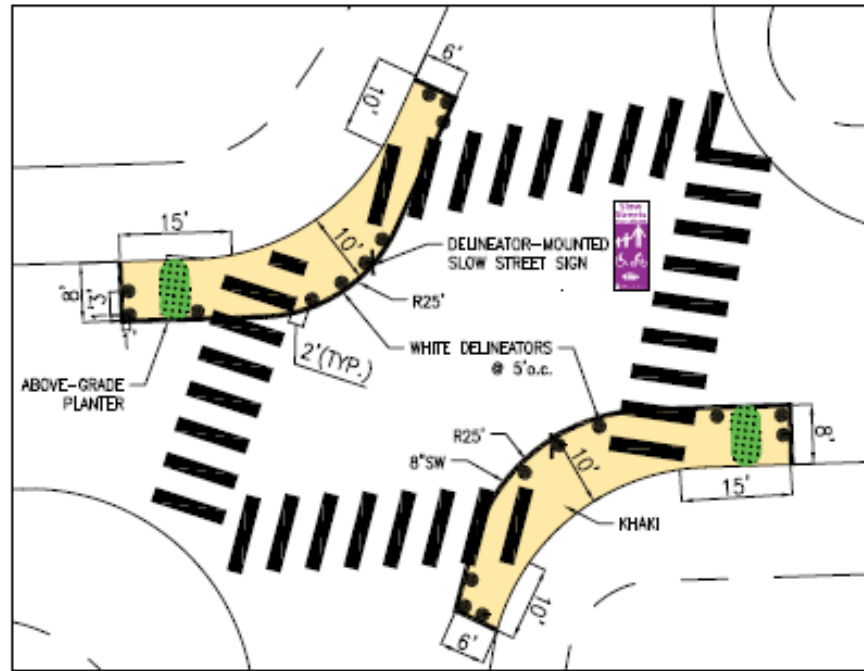
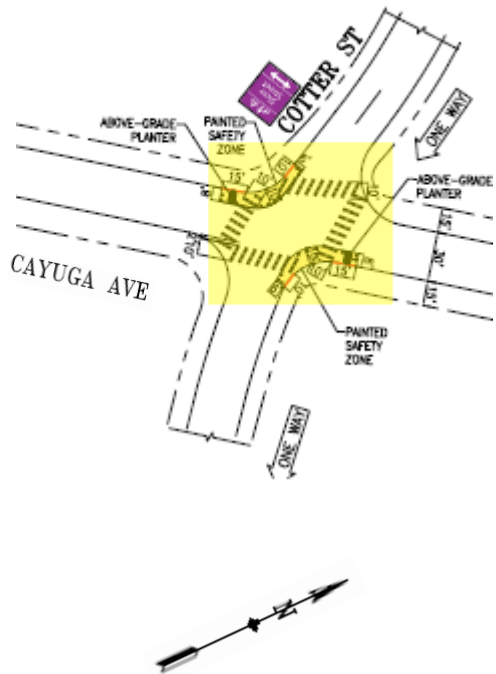


Conference Line: **1-415-915-0757** (conference ID: 177 427 087#)

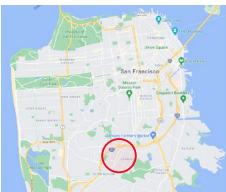
To comment on an item, press *5 to raise hand and *6 to unmute when prompted.

14(d). ESTABLISH – RED ZONE

- A. Cayuga Avenue, east side, from Cotter Street to 15 feet northerly (for painted safety zone, removes one unmetered parking space)
 - B. Cayuga Avenue, west side, from Cotter Street to 15 feet southerly (for painted safety zone, removes one unmetered parking space)
 - C. Cotter Street, south side, from Cayuga Avenue to 10 feet westerly (for painted safety zone, removes one unmetered parking space)
 - D. Cotter Street, north side, from Cayuga Avenue to 10 feet easterly (for painted safety zone, removes one unmetered parking space)
- (Supervisor District 11) (Approvable by the City Traffic Engineer) Ellen Robinson, ellen.robinson@sfmta.com



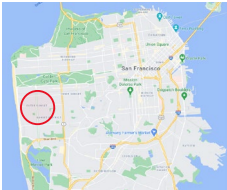
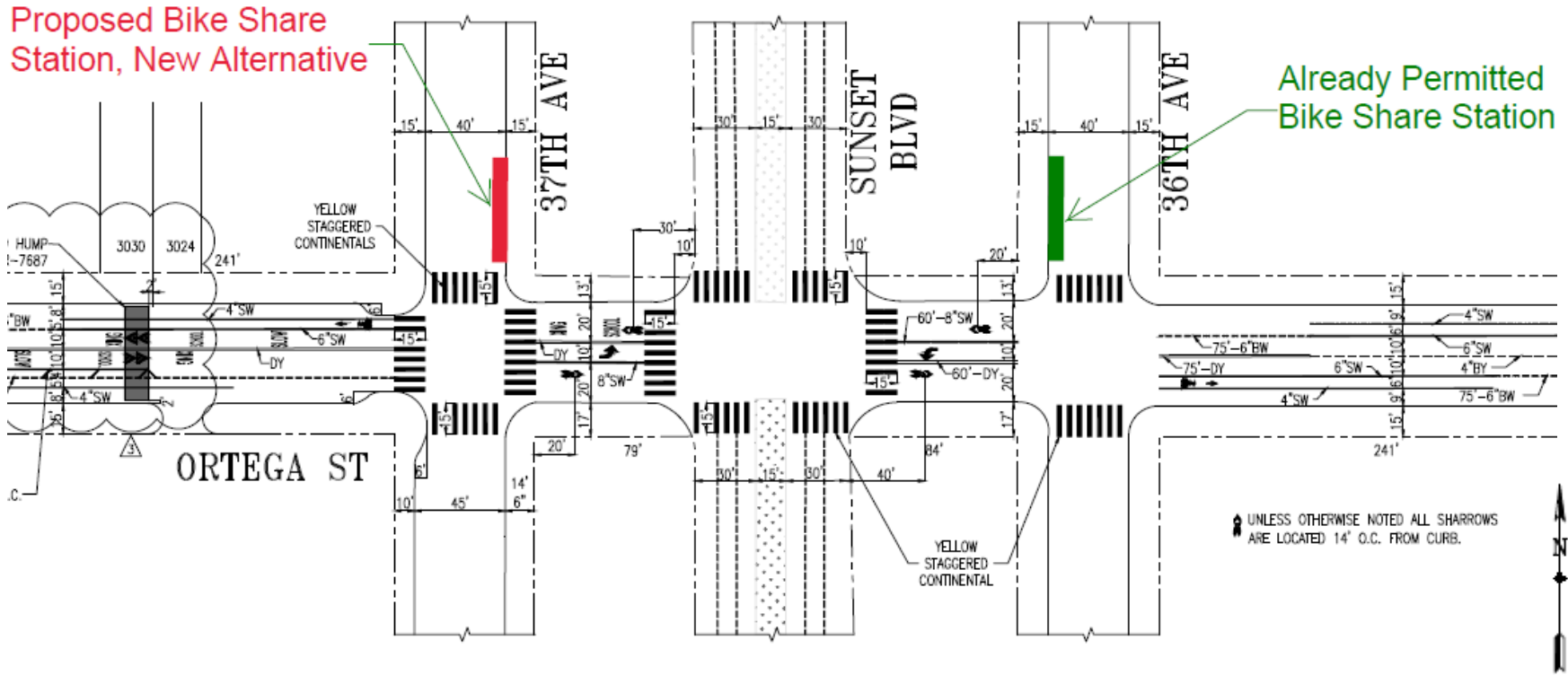
COTTER STREET PAINTED SAFETY ZONE DETAIL
NTS



Conference Line: **1-415-915-0757** (conference ID: 177 427 087#)
To comment on an item, press *5 to raise hand and *6 to unmute when prompted.

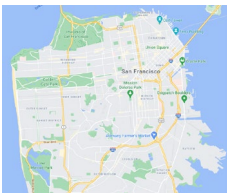
**15. ESTABLISH – NO STOPPING EXCEPT BICYCLES
ESTABLISH – BIKE SHARE STATION**

37th Avenue, east side, from Ortega Street to 61 feet northerly (52-foot bike share station with red zones on each side of the station) (Supervisor District 4) (Approvable by the City Traffic Engineer) Laura Stonehill, laura.stonehill@sfmta.com



Conference Line: 1-415-915-0757 (conference ID: 177 427 087#)
To comment on an item, press *5 to raise hand and *6 to unmute when prompted.

PUBLIC COMMENT



Conference Line: **1-415-915-0757** (conference ID: 177 427 087#)
To comment on an item, press *5 to raise hand and *6 to unmute when prompted.

Public Hearing Decision Posting

Results will be posted by
5 PM next Friday

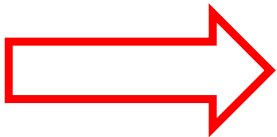
<https://www.sfmta.com/calendar/engineering-public-hearing-meeting-march-17-2023-3>

Referenced Materials

[Engineering Public Hearing Agenda, November 4, 2022](#)

 [Engineering Public Hearing Agenda, November 4, 2022](#)

 [Engineering Public Hearing Results, November 4, 2022](#)





SFMTA

Next Engineering Public Hearing April 7, 2023

<https://sfmta.com/enghearing>

Conference Line: 1-415-915-0757

Conference ID: 177 427 087#