



SFMTA

# August 13, 2021

# Engineering Public Hearing

<https://sfmta.com/enghearing>

Conference Line: 888-398-2342

Participation Code: 8647385#

# Proposed Street Changes

How does a proposed street change get approved?



<https://www.sfmta.com/committees/engineering-public-hearings>


# Public Hearing Decision Posting

Results will be posted by  
5 PM next Friday

<https://www.sfmta.com/calendar/engineering-public-hearing-meeting-august-13-2021>

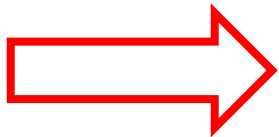
## Referenced Materials

Engineering Public Hearing Agenda, July 17, 2020

 [Engineering Public Hearing Agenda, July 17, 2020](#)

Engineering Public Hearing Results, July 17, 2020

 [Engineering Public Hearing Results, July 17, 2020](#)





SFMTA

# August 13, 2021

# Engineering Public Hearing

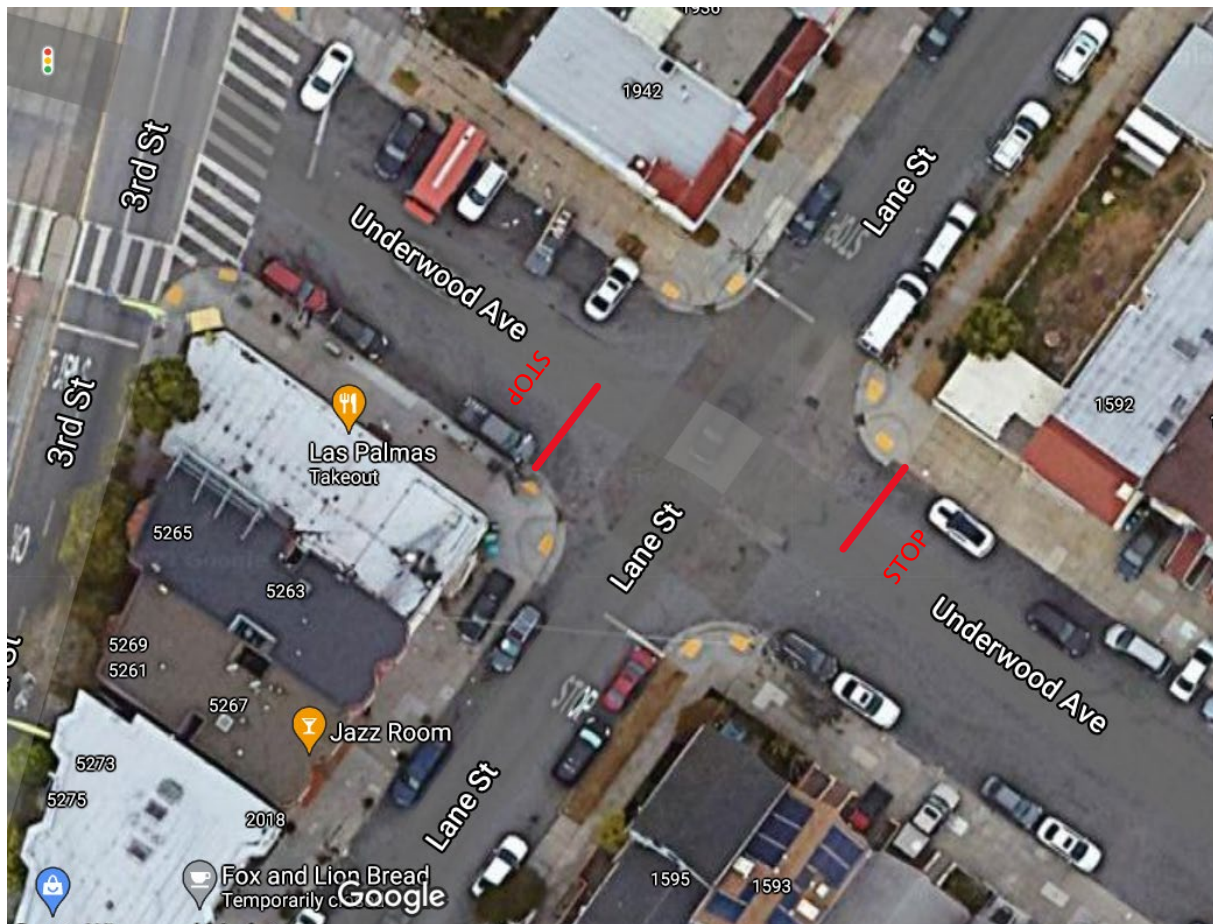
<https://sfmta.com/enghearing>

Conference Line: 888-398-2342

Participation Code: 8647385#

## 1. ESTABLISH – STOP SIGNS

Underwood Avenue, eastbound and westbound, at Lane Street, making this intersection an all-way STOP (Supervisor District 10) (Approvable by the City Traffic Engineer) Amy Chun, amy.chun@sfmta.com



Conference Line: **1-888-398-2342** (use participation code: 8647385)

To comment on an item, press "1" and then "0" when prompted.



## 2. ESTABLISH – STOP SIGNS

Russia Avenue, eastbound and westbound, at Paris Street, making this intersection an all-way STOP (Supervisor District 11) (Approvable by the City Traffic Engineer) Amy Chun, amy.chun@sfmta.com

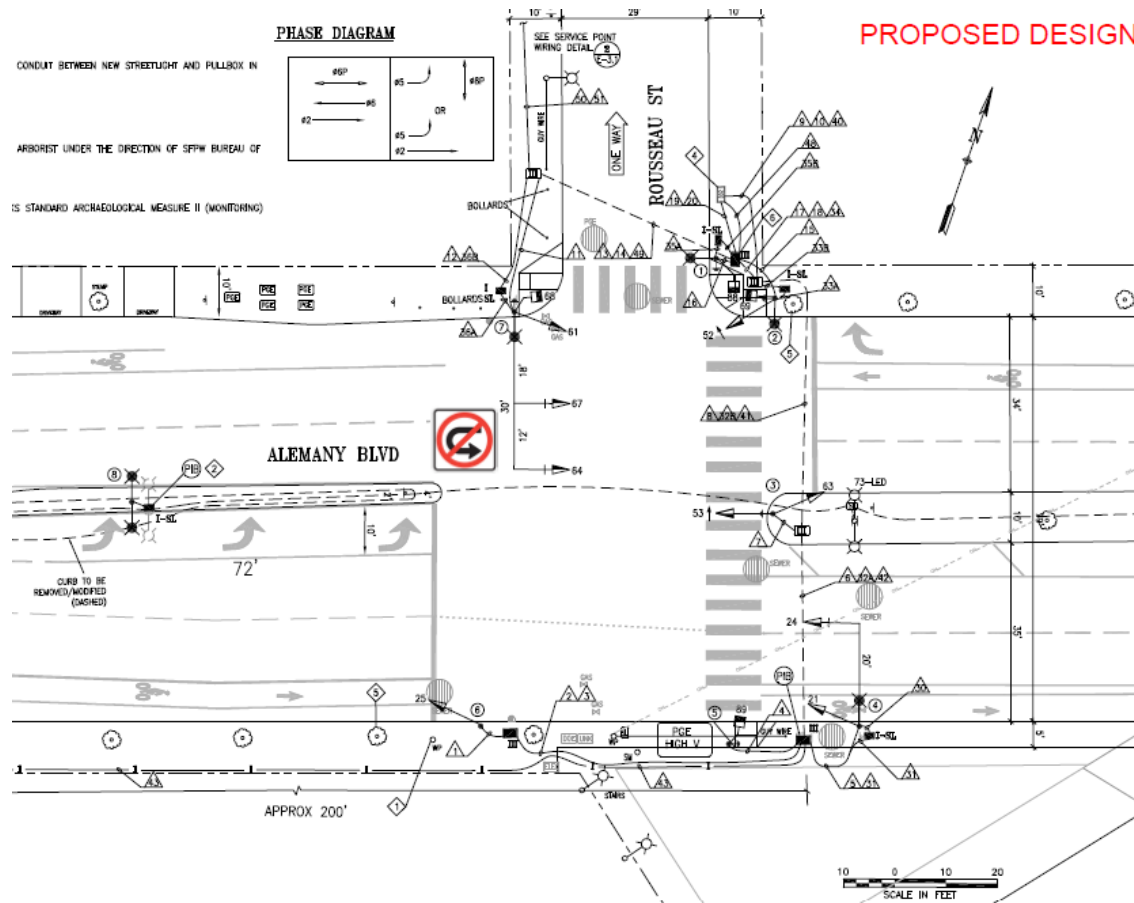


Conference Line: **1-888-398-2342** (use participation code: 8647385)

To comment on an item, press "1" and then "0" when prompted.

### 3. ESTABLISH – NO U-TURN

Alemny Boulevard, southbound, at Rousseau Street (Supervisor Districts 8 and 11) (Approvable by the City Traffic Engineer) Corbin Skerrit, corbin.skerrit@sfmta.com

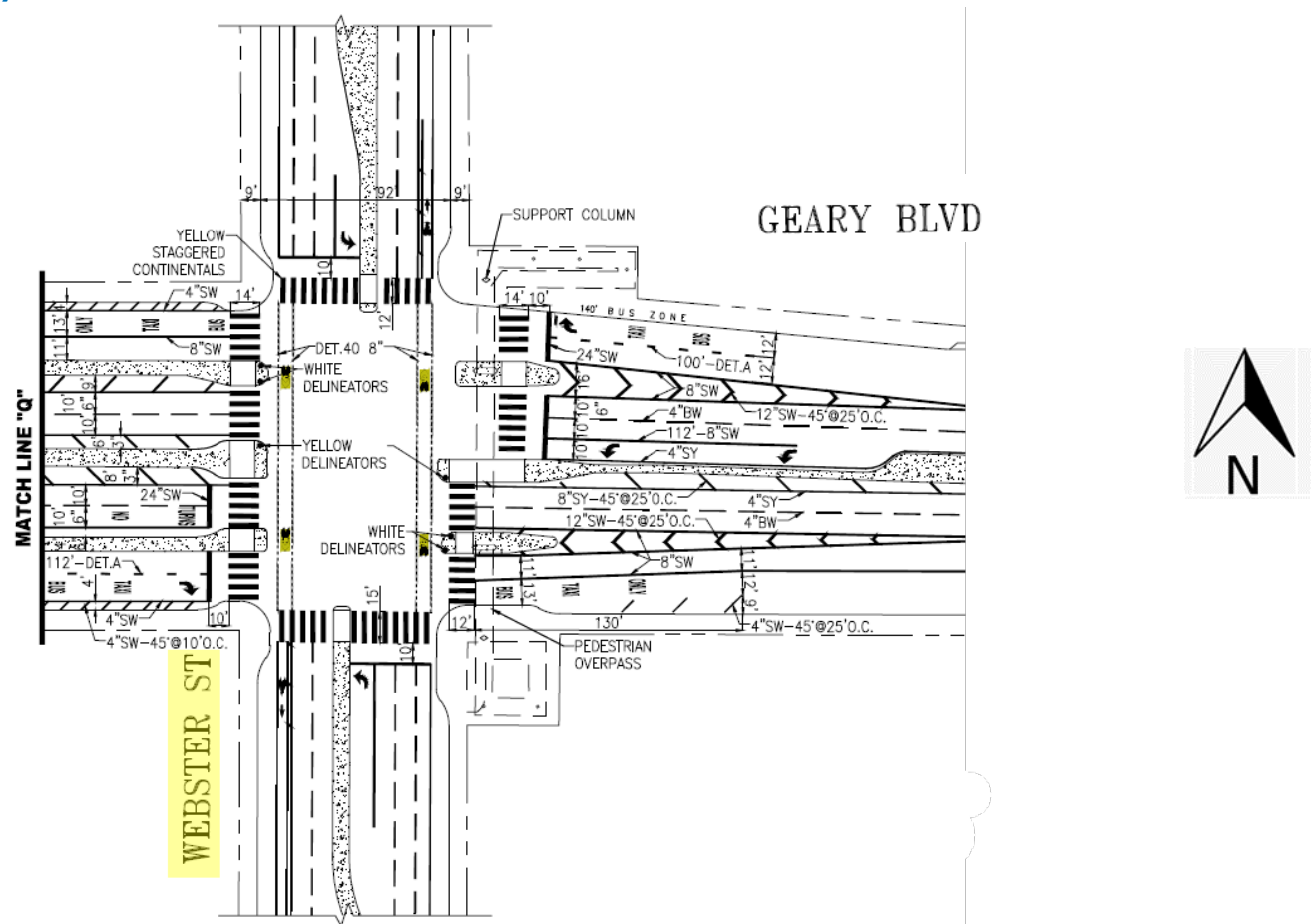


Conference Line: **1-888-398-2342** (use participation code: 8647385)

To comment on an item, press "1" and then "0" when prompted.

#### 4. ESTABLISH – NO TURN ON RED

Webster Street, northbound and southbound, at Geary Boulevard (Supervisor District 5) (Approvable by the City Traffic Engineer) Daniel Mackowski, daniel.mackowski@sfmta.com

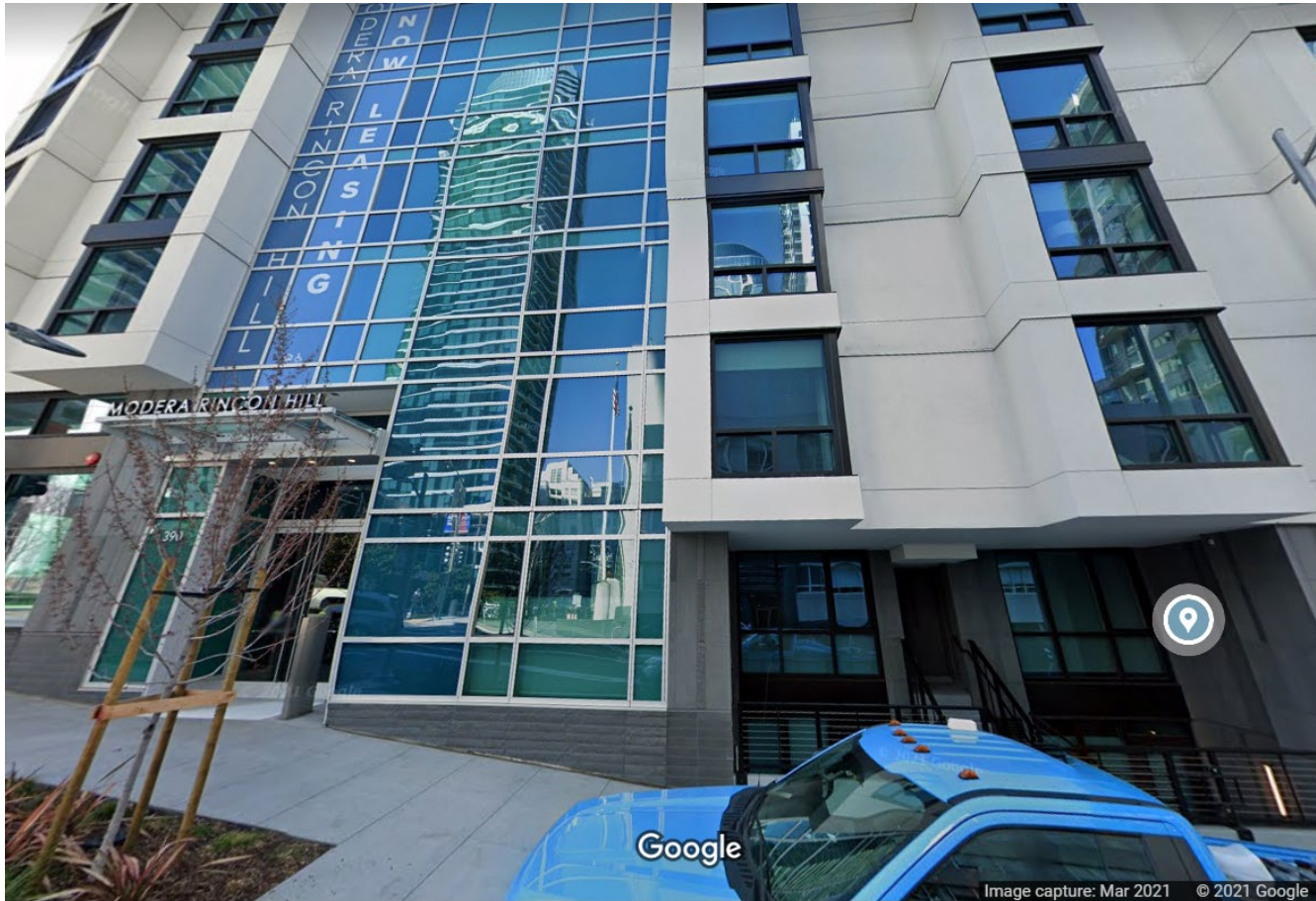


Conference Line: **1-888-398-2342** (use participation code: 8647385)

To comment on an item, press "1" and then "0" when prompted.



**5. ESTABLISH – RESIDENTIAL PERMIT PARKING AREA U**  
**390 1st Street, north of Harrison Street (eligibility only, no signs) (Supervisor District 6) (Requires approval by the SFMTA Board) Gerry Porras, gerry.porras@sfmta.com**



Conference Line: **1-888-398-2342** (use participation code: 8647385)

To comment on an item, press "1" and then "0" when prompted.

## 6. ESTABLISH – RESIDENTIAL PERMIT PARKING AREA S

188 Buchanan Street, south of Waller Street (eligibility only, no signs) (Supervisor District 8) (Requires approval by the SFMTA Board) Gerry Porras, gerry.porras@sfmta.com



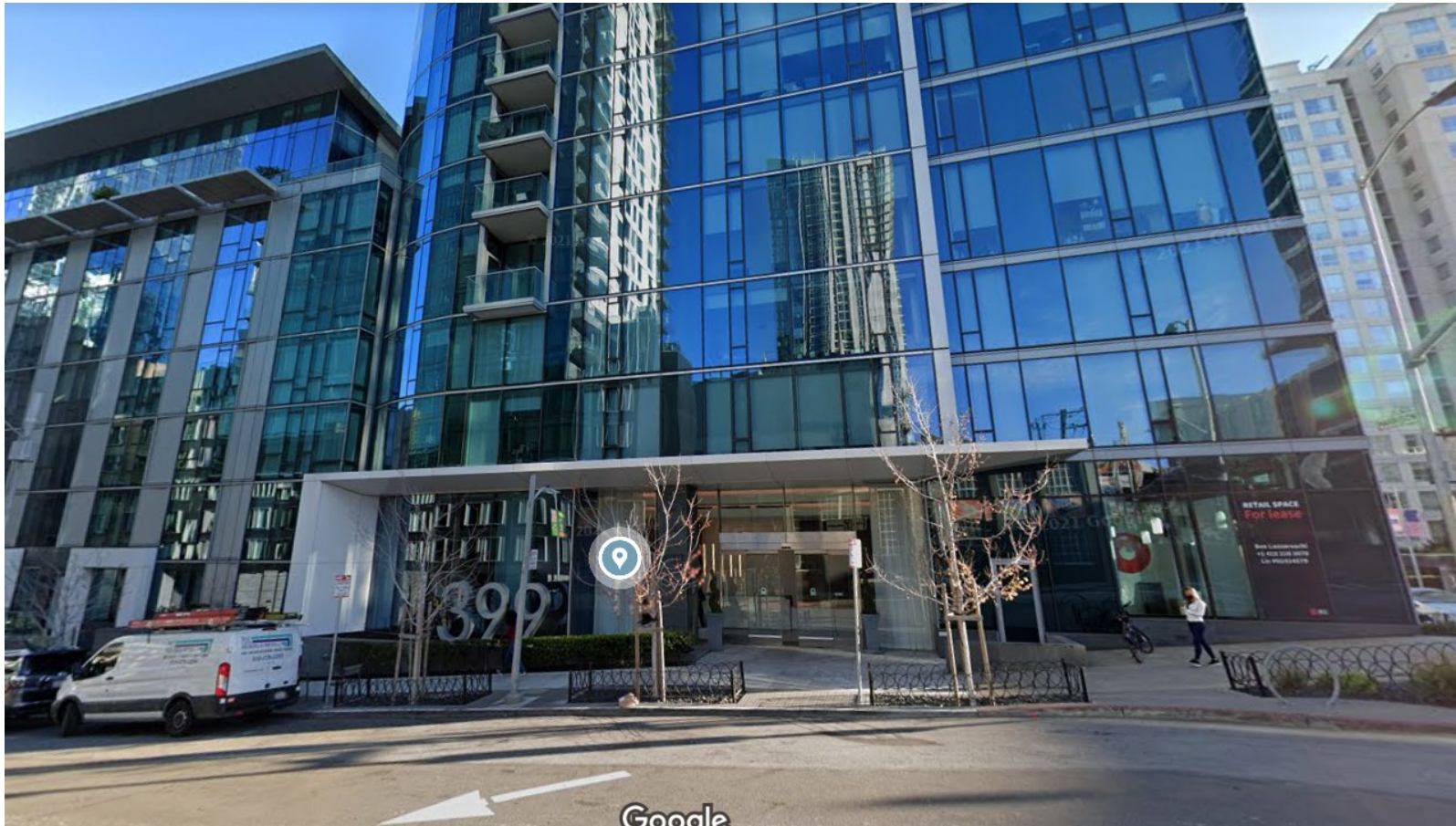
Conference Line: **1-888-398-2342** (use participation code: 8647385)

To comment on an item, press "1" and then "0" when prompted.



## 7. ESTABLISH – RESIDENTIAL PERMIT PARKING AREA Y

399 Fremont Street, north of Harrison Street (eligibility only, no signs) (Supervisor District 6) (Requires approval by the SFMTA Board) Gerry Porras, gerry.porras@sfmta.com

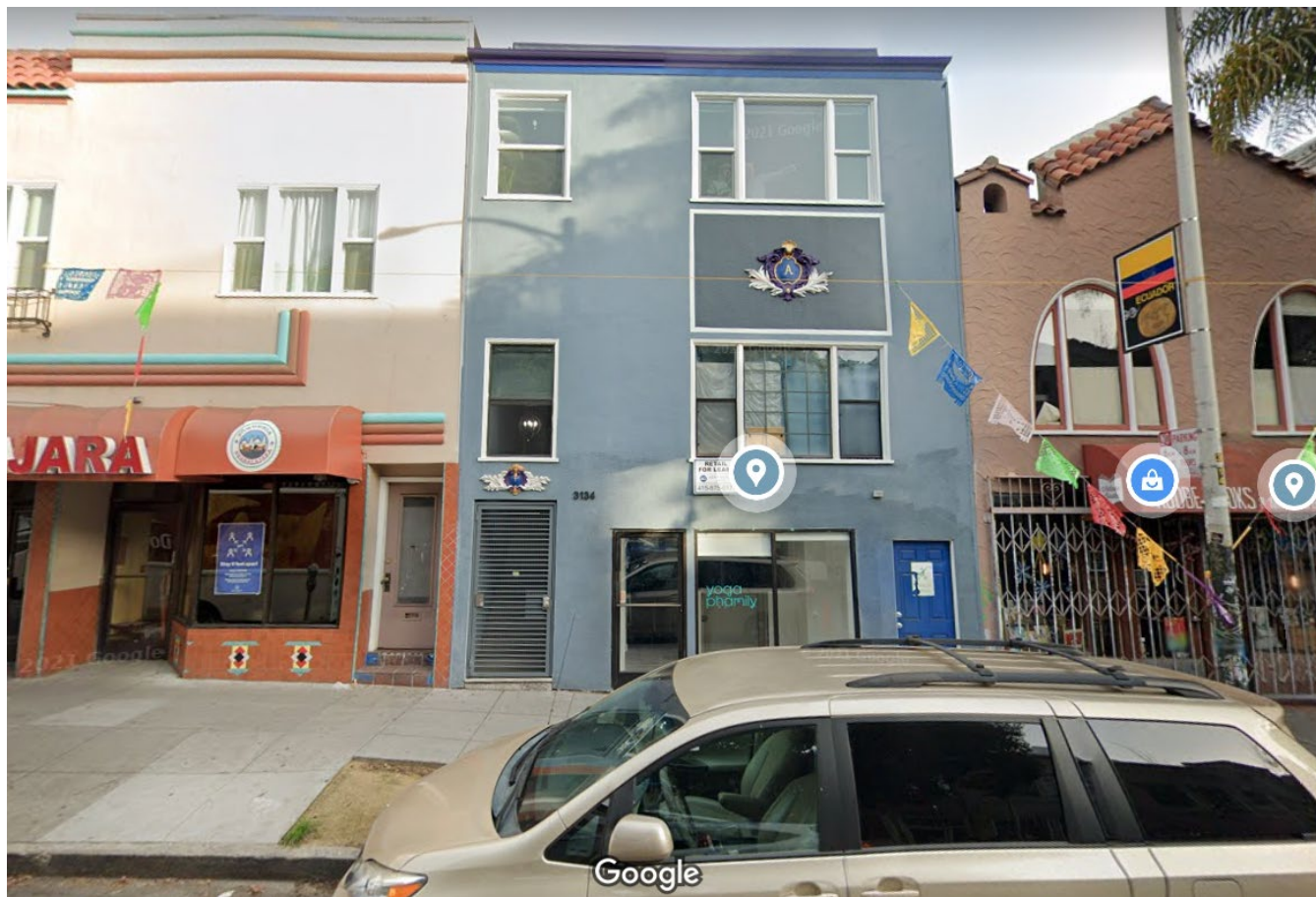


Conference Line: **1-888-398-2342** (use participation code: 8647385)

To comment on an item, press "1" and then "0" when prompted.

## 8. ESTABLISH – RESIDENTIAL PERMIT PARKING AREA I

3134 24th Street, west of Folsom Street (eligibility only, no signs) (Supervisor District 5) (Requires approval by the SFMTA Board) Gerry Porras, gerry.porras@sfmta.com



Conference Line: **1-888-398-2342** (use participation code: 8647385)

To comment on an item, press "1" and then "0" when prompted.



## 9. ESTABLISH – RESIDENTIAL PERMIT PARKING AREA R

414 Gough Street, north of Hayes Street (eligibility only, no signs) (Supervisor District 5) (Requires approval by the SFMTA Board) Gerry Porras, gerry.porras@sfmta.com



Conference Line: **1-888-398-2342** (use participation code: 8647385)

To comment on an item, press "1" and then "0" when prompted.

## 10. ESTABLISH – RESIDENTIAL PERMIT PARKING AREA R

435 Hayes Street, west of Gough Street (eligibility only, no signs) (Supervisor District 5) (Requires approval by the SFMTA Board) Gerry Porras, gerry.porras@sfmta.com



Conference Line: **1-888-398-2342** (use participation code: 8647385)

To comment on an item, press "1" and then "0" when prompted.



## 11. ESTABLISH – RESIDENTIAL PERMIT PARKING AREA G

2130 Post Street, west of Pierce Street (eligibility only, no signs) (Supervisor District 3) (Requires approval by the SFMTA Board) Gerry Porras, gerry.porras@sfmta.com

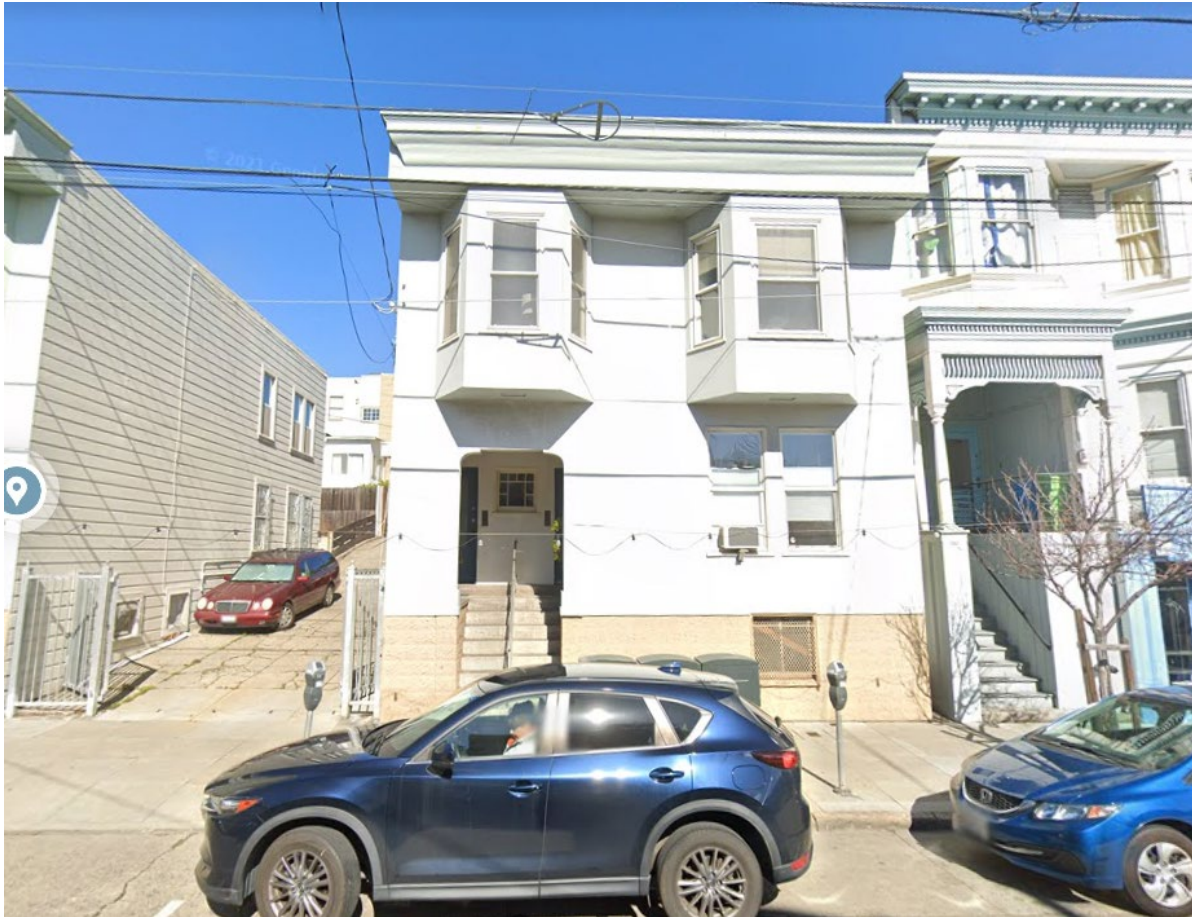


Conference Line: **1-888-398-2342** (use participation code: 8647385)

To comment on an item, press "1" and then "0" when prompted.

## 12. ESTABLISH - RESIDENTIAL PERMIT PARKING AREA S

3882-3884 24th Street, east of Sanchez Street (eligibility only, no signs) (Supervisor District 9) (Requires approval by the SFMTA Board) Gerry Porras, gerry.porras@sfmta.com



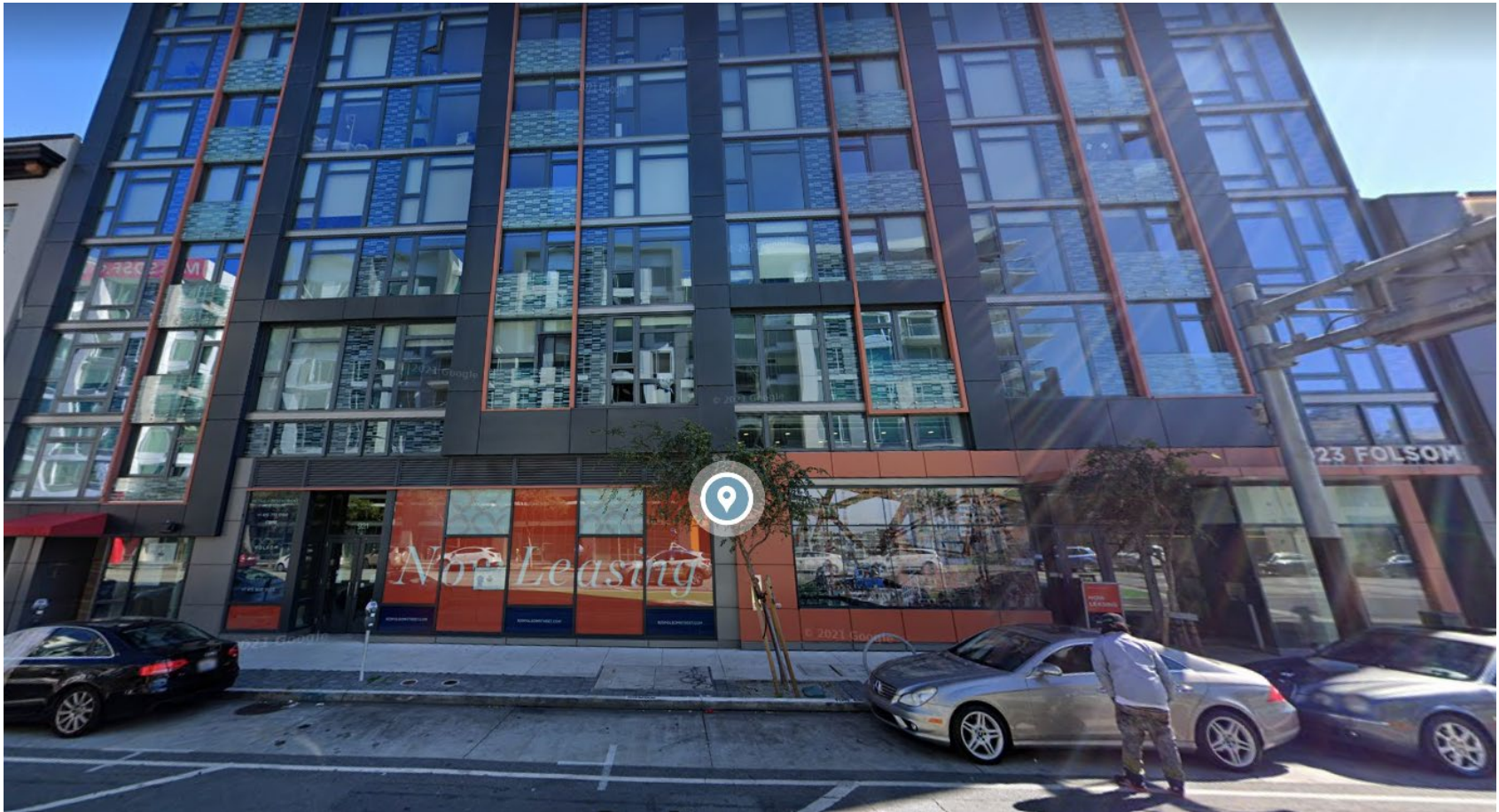
Conference Line: **1-888-398-2342** (use participation code: 8647385)

To comment on an item, press "1" and then "0" when prompted.



### 13. ESTABLISH - RESIDENTIAL PERMIT PARKING AREA U

921-923 Folsom Street, west of 5th Street (Eligibility only, no signs) (Supervisor District 6) (Requires approval by the SFMTA Board) Gerry Porras, gerry.porras@sfmta.com

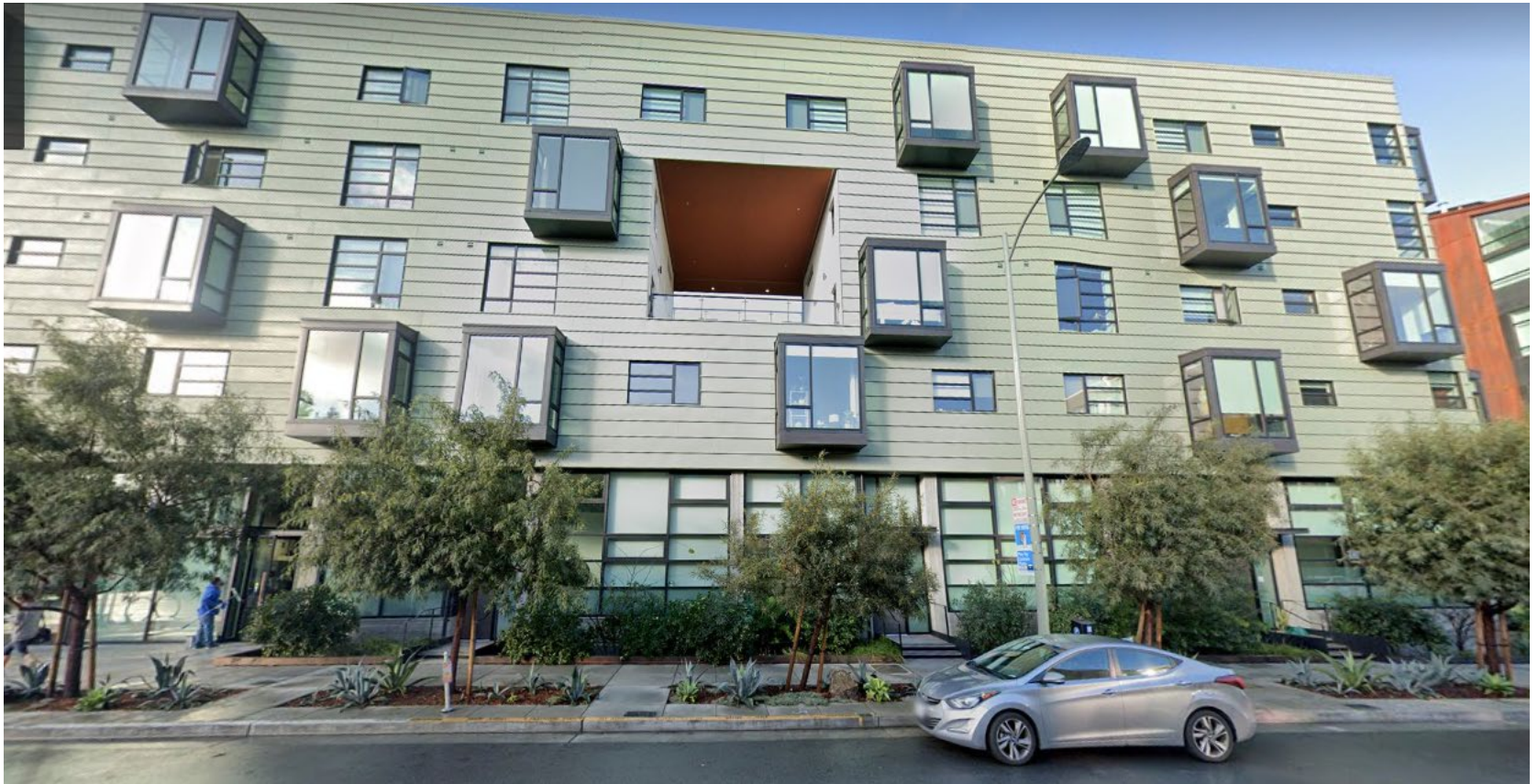


Conference Line: **1-888-398-2342** (use participation code: 8647385)

To comment on an item, press "1" and then "0" when prompted.

#### 14. ESTABLISH - RESIDENTIAL PERMIT PARKING AREA EE

680 Indiana Street, north of 19th Street (Eligibility only, no signs) (Supervisor District 10) (Requires approval by the SFMTA Board) Gerry Porras, [gerry.porras@sfmta.com](mailto:gerry.porras@sfmta.com)



Conference Line: **1-888-398-2342** (use participation code: 8647385)

To comment on an item, press "1" and then "0" when prompted.



## 15. ESTABLISH - RESIDENTIAL PERMIT PARKING AREA A

810-820 Battery Street, between Broadway and Vallejo Street (Eligibility only, no signs) (Supervisor District 3) (Requires approval by the SFMTA Board) Gerry Porras, [gerry.porras@sfmta.com](mailto:gerry.porras@sfmta.com)



Conference Line: **1-888-398-2342** (use participation code: 8647385)

To comment on an item, press "1" and then "0" when prompted.

## 16. ESTABLISH - RESIDENTIAL PERMIT PARKING AREA U

388 5th Street, north of Harrison Street (Eligibility only, no signs) (Supervisor District 6) (Requires approval by the SFMTA Board) Gerry Porras, gerry.porras@sfmta.com



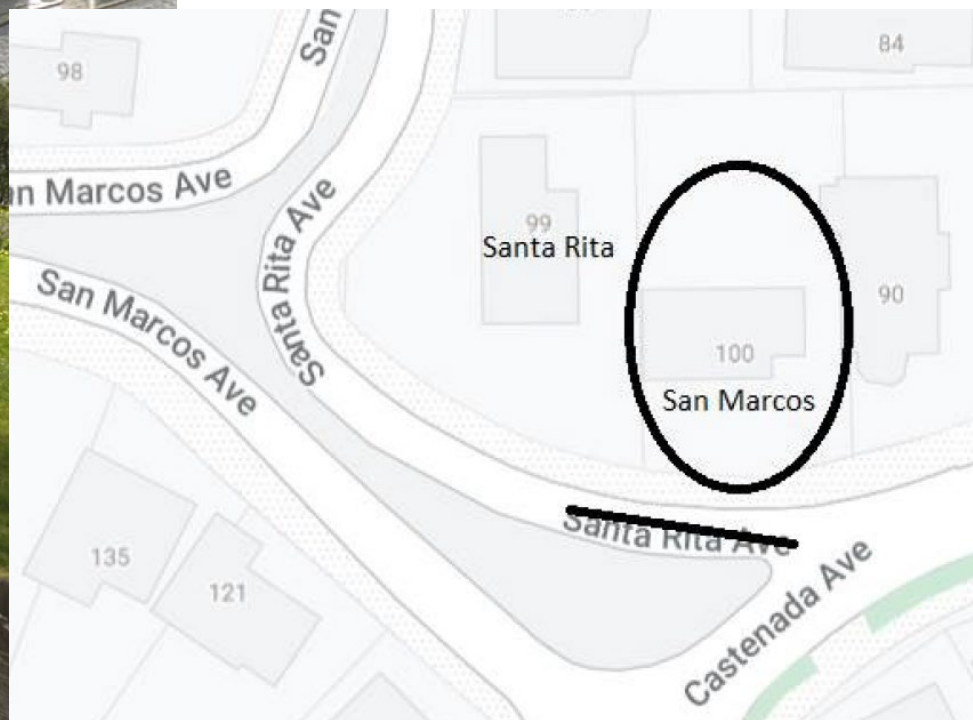
Conference Line: **1-888-398-2342** (use participation code: 8647385)

To comment on an item, press "1" and then "0" when prompted.



## 17. ESTABLISH - RESIDENTIAL PERMIT PARKING AREA T

100 San Marcos Avenue, north of Castenada Avenue (Eligibility only, no signs) (Supervisor District 7)  
(Requires approval by the SFMTA Board) Raynell Cooper, raynell.cooper@sfmta.com

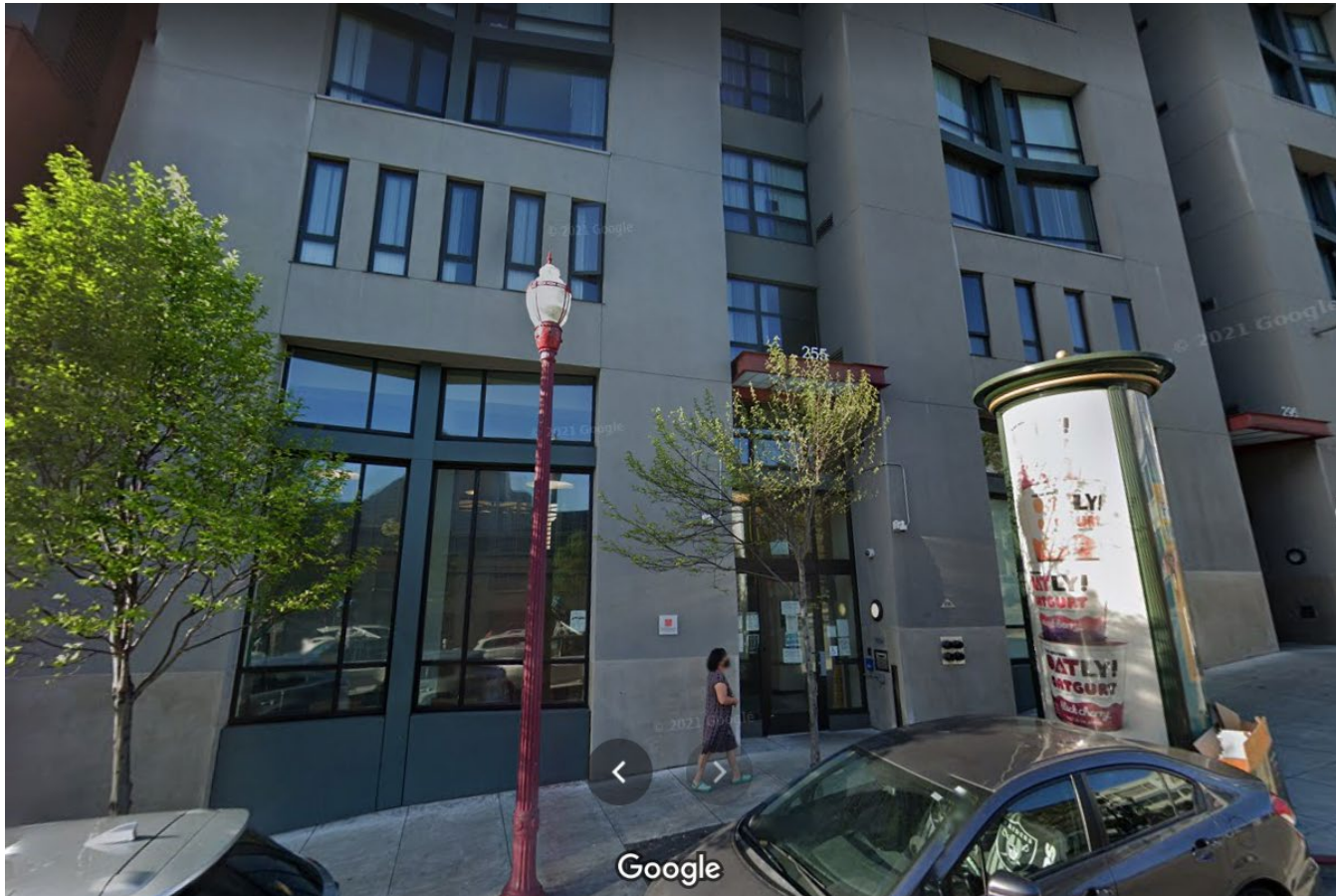


Conference Line: **1-888-398-2342** (use participation code: 8647385)

To comment on an item, press "1" and then "0" when prompted.

## 18. ESTABLISH - RESIDENTIAL PERMIT PARKING AREA A

255 Broadway, east of Sansome Street (Eligibility only, no signs) (Supervisor District 3) (Requires approval by the SFMTA Board) Gerry Porras, gerry.porras@sfmta.com



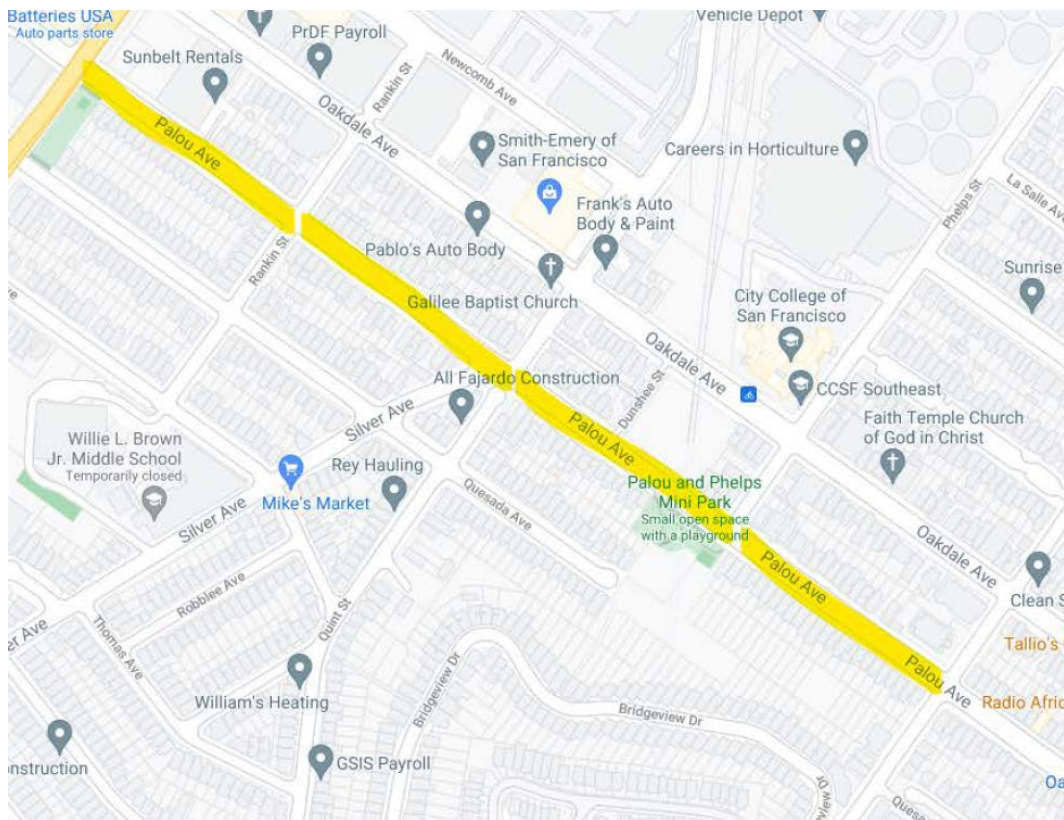
Conference Line: **1-888-398-2342** (use participation code: 8647385)

To comment on an item, press "1" and then "0" when prompted.



## 19. ESTABLISH - SPEED CUSHIONS

- A. Palou Avenue, between Selby Street and Rankin Street (2 speed cushions)
- B. Palou Avenue, between Rankin Street and Quint Street/Silver Avenue (2 speed cushions)
- C. Palou Avenue, between Quint Street/Silver Avenue and Phelps Street (2 speed cushions)
- D. Palou Avenue, between Phelps Street and Newhall Street (2 speed cushions)

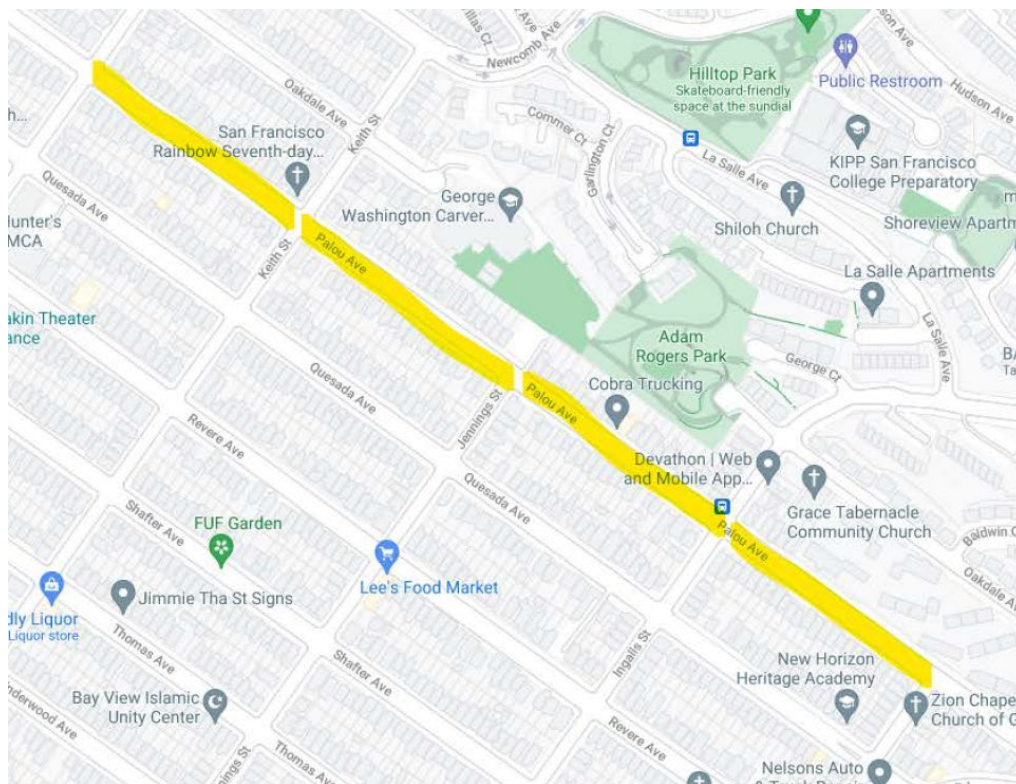


Conference Line: **1-888-398-2342** (use participation code: 8647385)

To comment on an item, press "1" and then "0" when prompted.

## 19. ESTABLISH - SPEED CUSHIONS

- E. Palou Avenue, between Lane Street and Keith Street (2 speed cushions)
  - F. Palou Avenue, between Keith Street and Jennings Street (2 speed cushions)
  - G. Palou Avenue, between Jennings Street and Ingalls Street (2 speed cushions)
  - H. Palou Avenue, between Ingalls Street and Hawes Street (2 speed cushions)
- (Supervisor District 10) (Approvable by the City Traffic Engineer) Daniel Carr, [daniel.carr@sfmta.com](mailto:daniel.carr@sfmta.com)



Conference Line: **1-888-398-2342** (use participation code: 8647385)

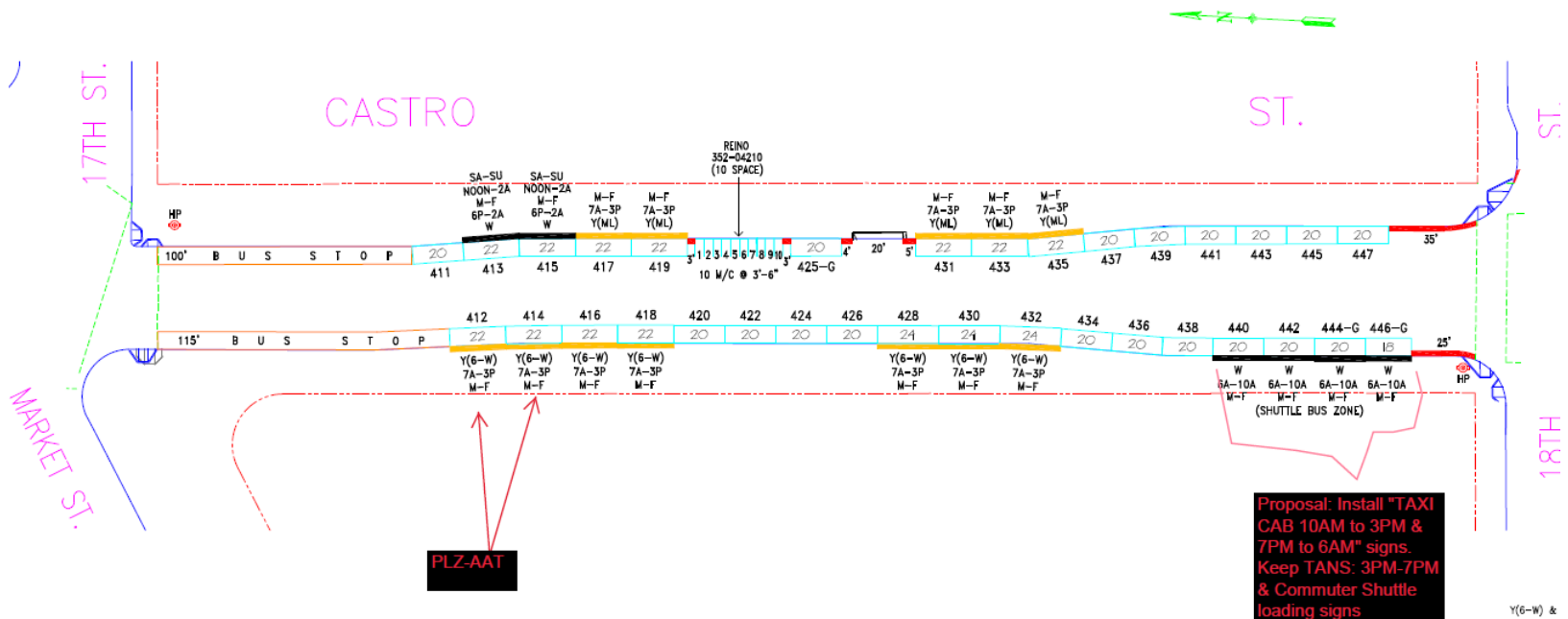
To comment on an item, press "1" and then "0" when prompted.

**20(a). ESTABLISH – TAXI ZONE, 10 AM TO 3 PM, AND 7 PM TO 6 AM, MONDAY THROUGH FRIDAY, AND ALL DAY, SATURDAY AND SUNDAY**

Castro Street, west side, from 25 feet to 103 feet north of 18th Street (keeps AM Commuter Shuttle stop and PM peak hour tow-away during weekdays, whilst creating a 78-foot taxi stand at all other times)  
(Approvable by the City Traffic Engineer)

**20(b). ESTABLISH – PASSENGER LOADING ZONE, AT ALL TIMES**

Castro Street, west side, from 115 feet to 159 feet south of Market Street (new 44-foot white zone)  
(Approvable by the City Traffic Engineer)



Proposal: Install "TAXI CAB 10AM to 3PM & 7PM to 6AM" signs. Keep TANS: 3PM-7PM & Commuter Shuttle loading signs

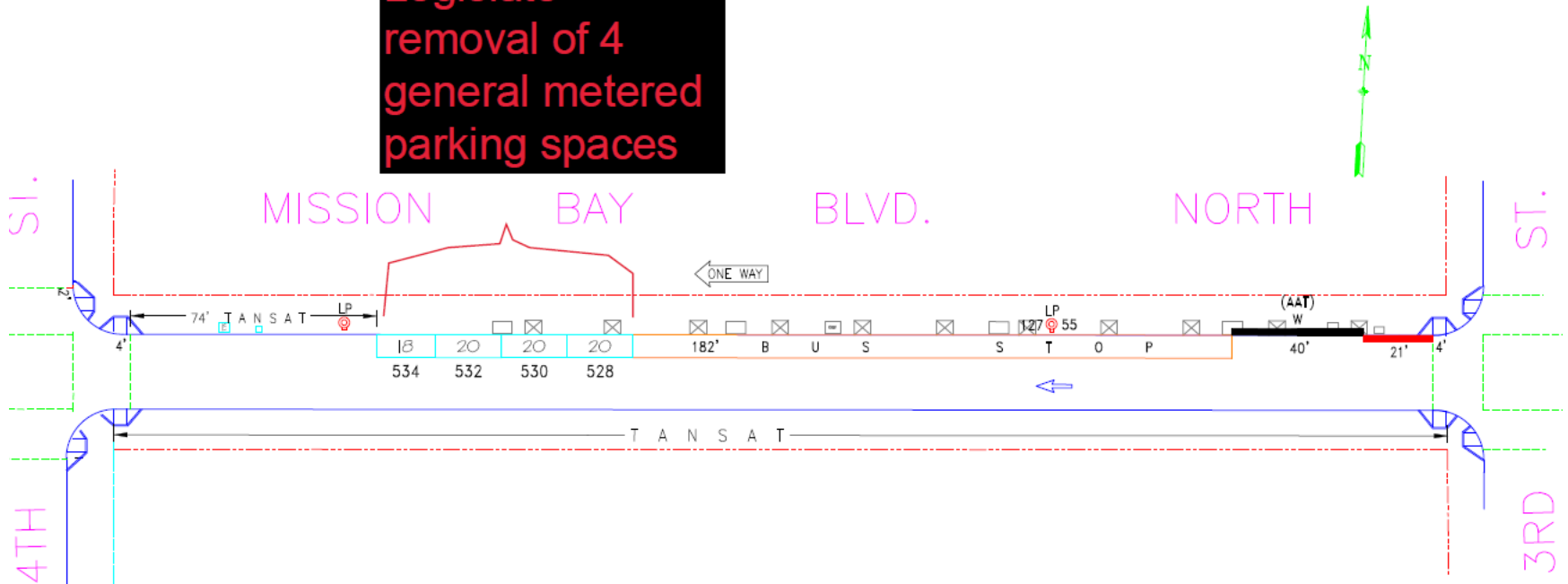
REVISION	DESCRIPTION	BY	DATE	DIR/RES	14	Restore ML#412 & #414 - W/S	JB	8/23/18
SAN FRANCISCO MUNICIPAL TRANSPORTATION								

**Conference Line: 1-888-398-2342 (use participation code: 8647385)**  
 To comment on an item, press "1" and then "0" when prompted.

## 20(c). ESTABLISH – BUS ZONE

Mission Bay Boulevard North, north side, from 74 feet to 150 feet east of 4th Street (extending current bus zone by 76 feet & removing all metered parking on this blockface) (Requires approval by the SFMTA Board)

Legislate  
removal of 4  
general metered  
parking spaces



Conference Line: **1-888-398-2342** (use participation code: 8647385)

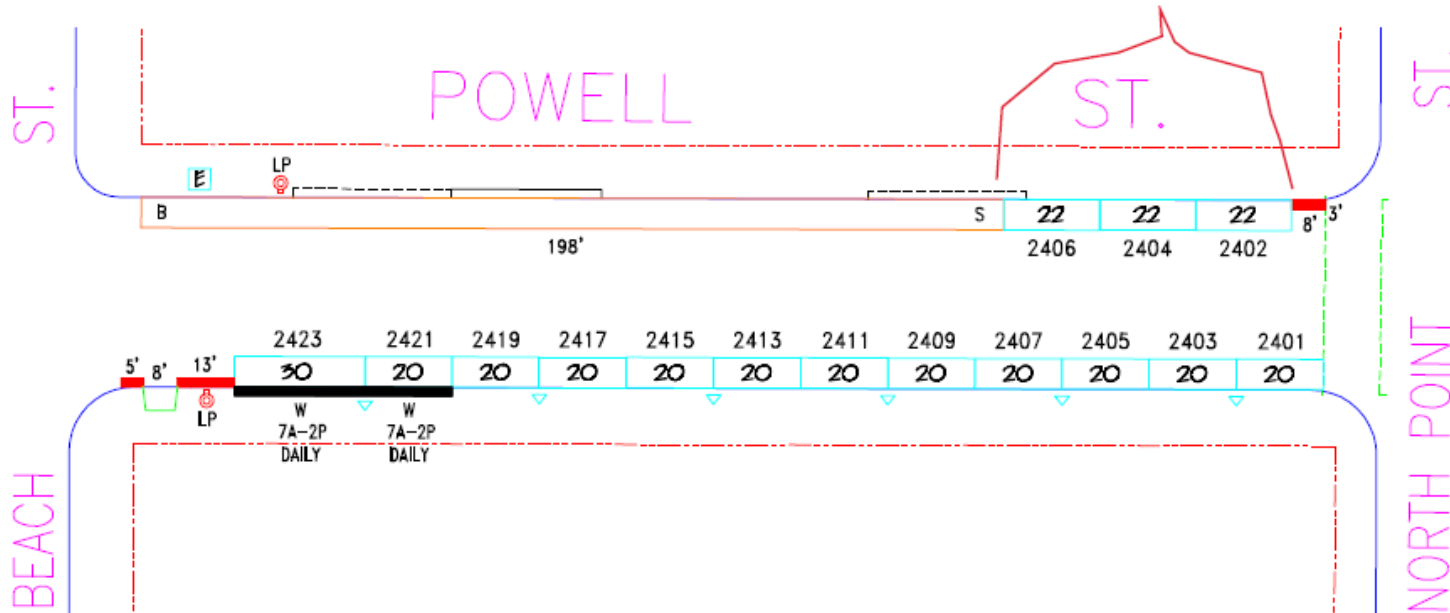
To comment on an item, press "1" and then "0" when prompted.



## 20(c). ESTABLISH – BUS ZONE

Powell Street, east side, from North Point Street to Beach Street (removes three general metered parking and extends existing bus terminal) (Requires approval by the SFMTA Board)

Remove metered parking here to extend bus zone/bus terminal space



Conference Line: **1-888-398-2342** (use participation code: 8647385)

To comment on an item, press "1" and then "0" when prompted.

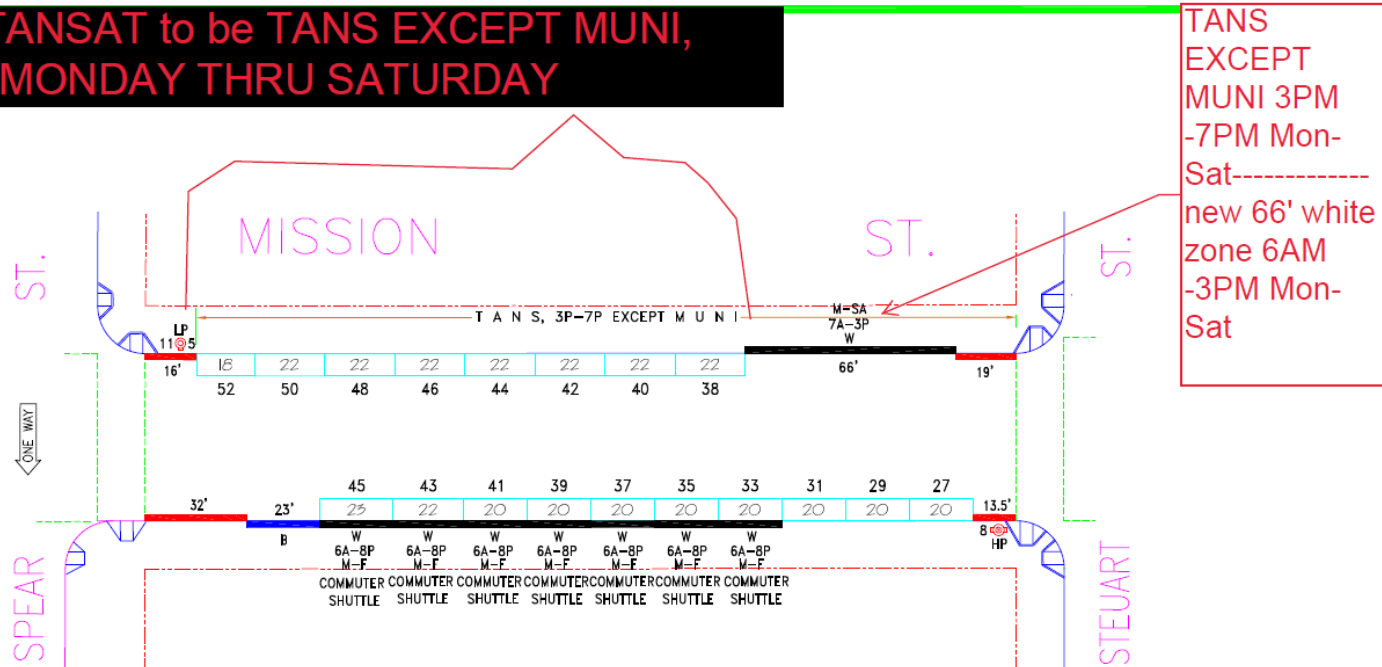
**20(d). ESTABLISH – TOW-AWAY, NO STOPPING, EXCEPT MUNI, 6 AM TO 7 PM, MONDAY THROUGH SATURDAY**

Mission Street, north side, from 16 feet to 188 feet east of Spear Street (Requires approval by the SFMTA Board)

**20(e). ESTABLISH – PASSENGER LOADING ZONE, 6 AM TO 3 PM, MONDAY THROUGH SATURDAY**

**ESTABLISH – TOW-AWAY, NO STOPPING, EXCEPT MUNI, 3 PM TO 7 PM, MONDAY THROUGH SATURDAY**  
 Mission Street, north side, from 19 feet to 85 feet west of Steuart Street (Requires approval by the SFMTA Board)

**Change this TANSAT to be TANS EXCEPT MUNI, 6AM to 7PM, MONDAY THRU SATURDAY**



**TANS EXCEPT MUNI 3PM -7PM Mon-Sat-----**  
**new 66' white zone 6AM -3PM Mon-Sat**

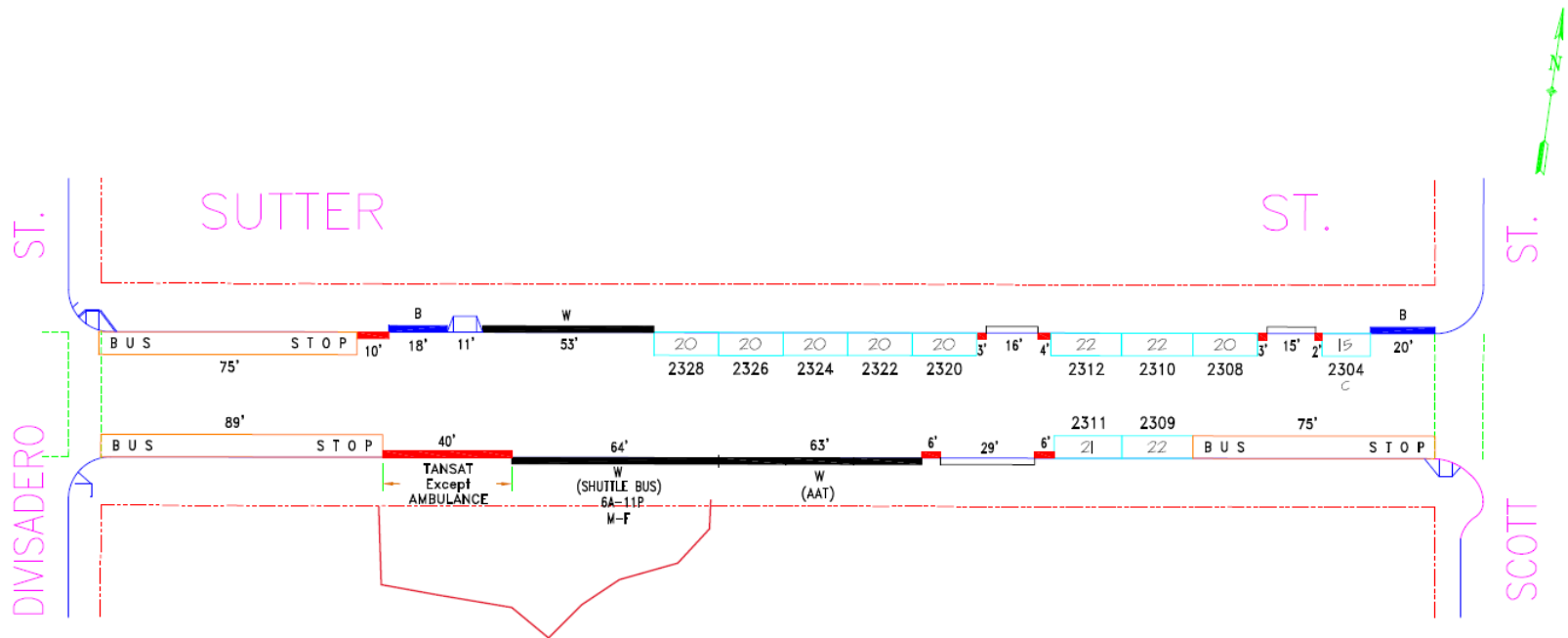
Conference Line: **1-888-398-2342** (use participation code: 8647385)  
 To comment on an item, press "1" and then "0" when prompted.

**20(f). ESTABLISH – TOW-AWAY, NO STOPPING ANYTIME, EXCEPT AMBULANCES**

Sutter Street, south side, from 89 feet to 129 feet east of Divisadero Street (Requires approval by the SFMTA Board)

**20(g). ESTABLISH – TOW-AWAY, NO STOPPING, 6 AM TO 11 PM, MONDAY THROUGH FRIDAY, EXCEPT SHUTTLE BUSES**

Sutter Street, south side, from 129 feet to 193 feet east of Divisadero Street (Requires approval by the SFMTA Board)



**Make these changes permanent (already installed in the field)**

Conference Line: **1-888-398-2342** (use participation code: 8647385)  
To comment on an item, press "1" and then "0" when prompted.

**20(h). ESTABLISH – BLUE ZONE**

Jennings Street, west side, from Armstrong Ave to 20 feet southerly

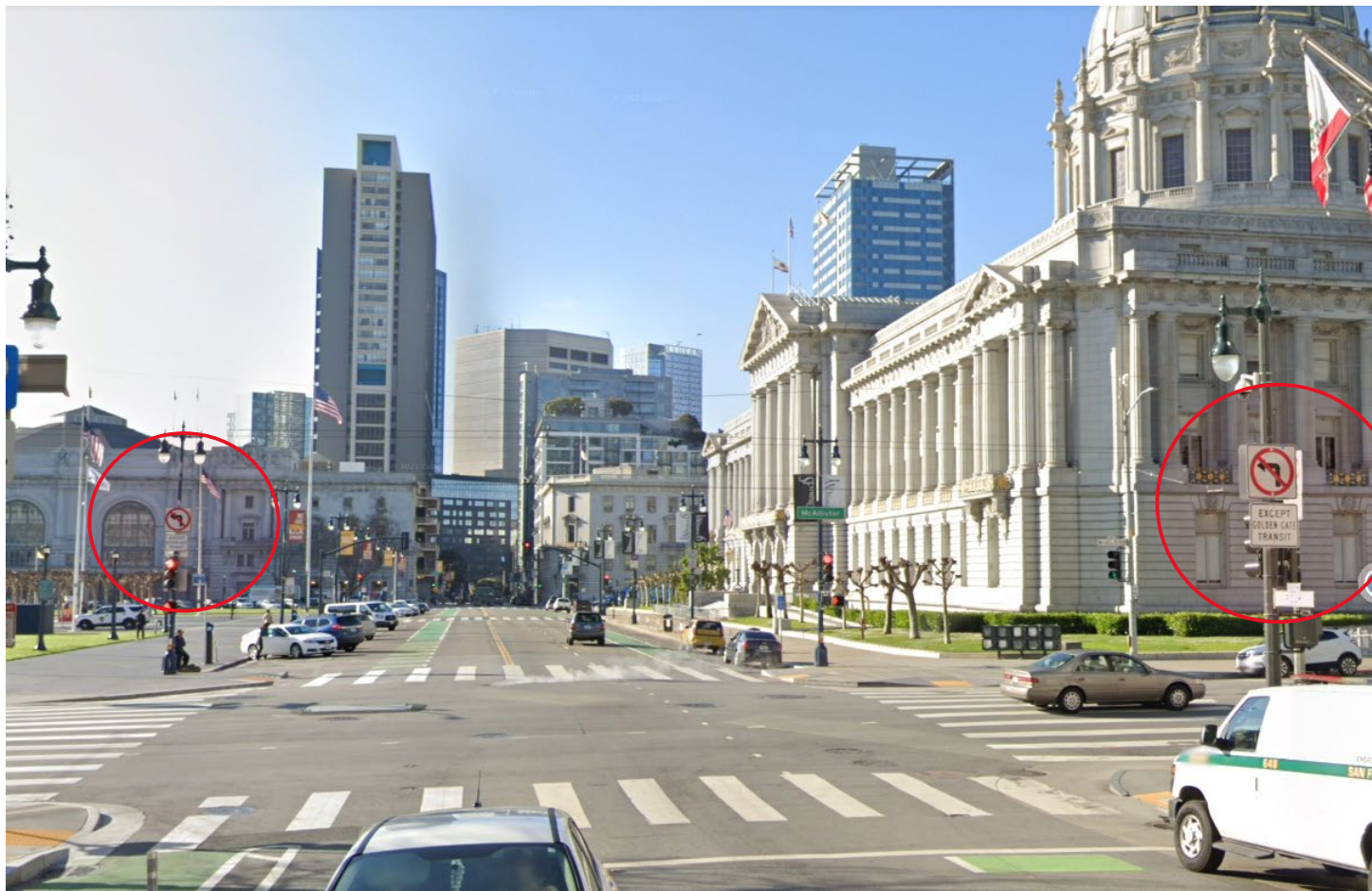
Jennings Street, east side, from 6 feet to 26 feet north of Armstrong Avenue (Approvable by the City Traffic Engineer)



Conference Line: **1-888-398-2342** (use participation code: 8647385)

To comment on an item, press "1" and then "0" when prompted.

**20(i). ESTABLISH – NO LEFT TURN EXCEPT GOLDEN GATE TRANSIT**  
**Polk Street, southbound, at McAllister Street (Approvable by the City Traffic Engineer)**

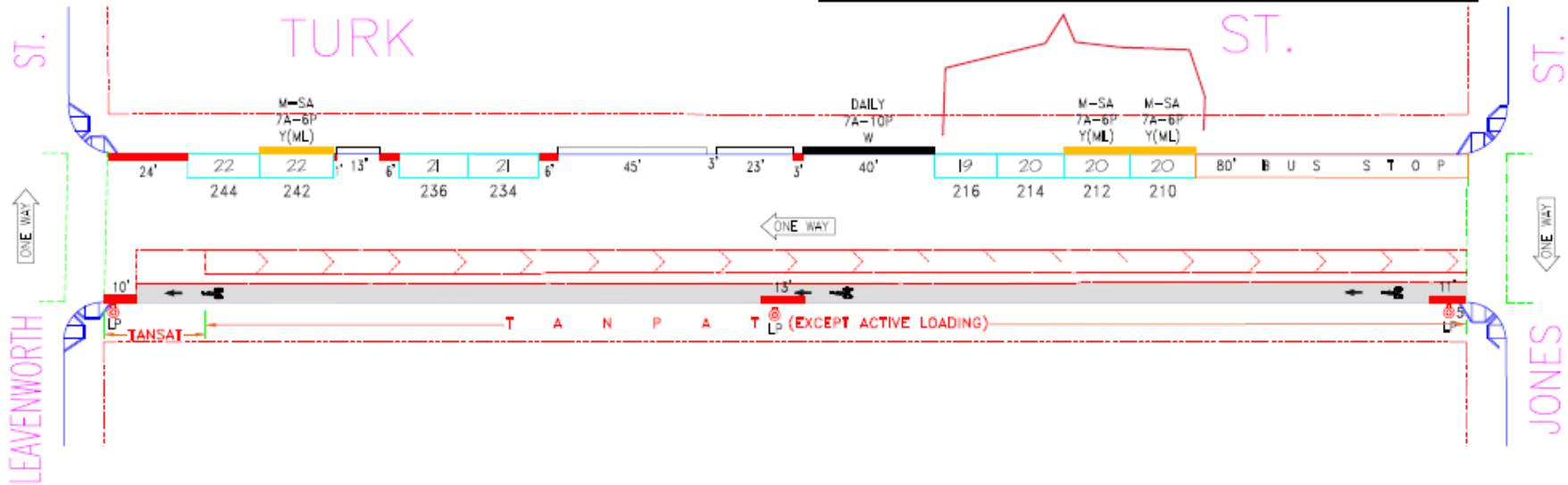


Conference Line: **1-888-398-2342** (use participation code: 8647385)

To comment on an item, press "1" and then "0" when prompted.

**20(j). ESTABLISH – METERED YELLOW ZONE, 6-WHEEL COMMERCIAL LOADING, 7 AM TO 6 PM, MONDAY THROUGH SATURDAY**  
**Turk Street, north side, from 80 feet west of Jones Street (Approvable by the City Traffic Engineer)**

Convert these 4 metered spaces to be 6-wheel commercial metered loading (becomes three --26 foot spaces)

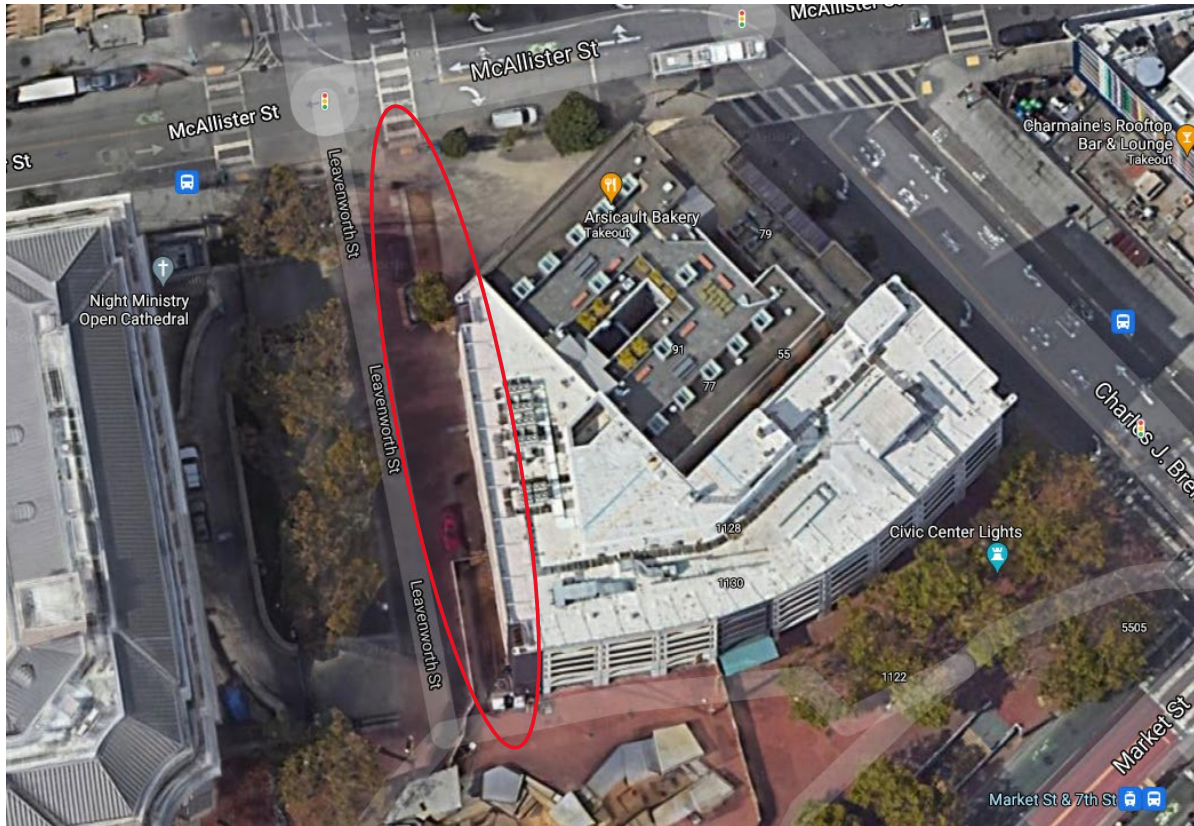


Conference Line: **1-888-398-2342** (use participation code: 8647385)  
 To comment on an item, press "1" and then "0" when prompted.



**20(k). ESTABLISH – TOW-AWAY, NO PARKING ANYTIME**

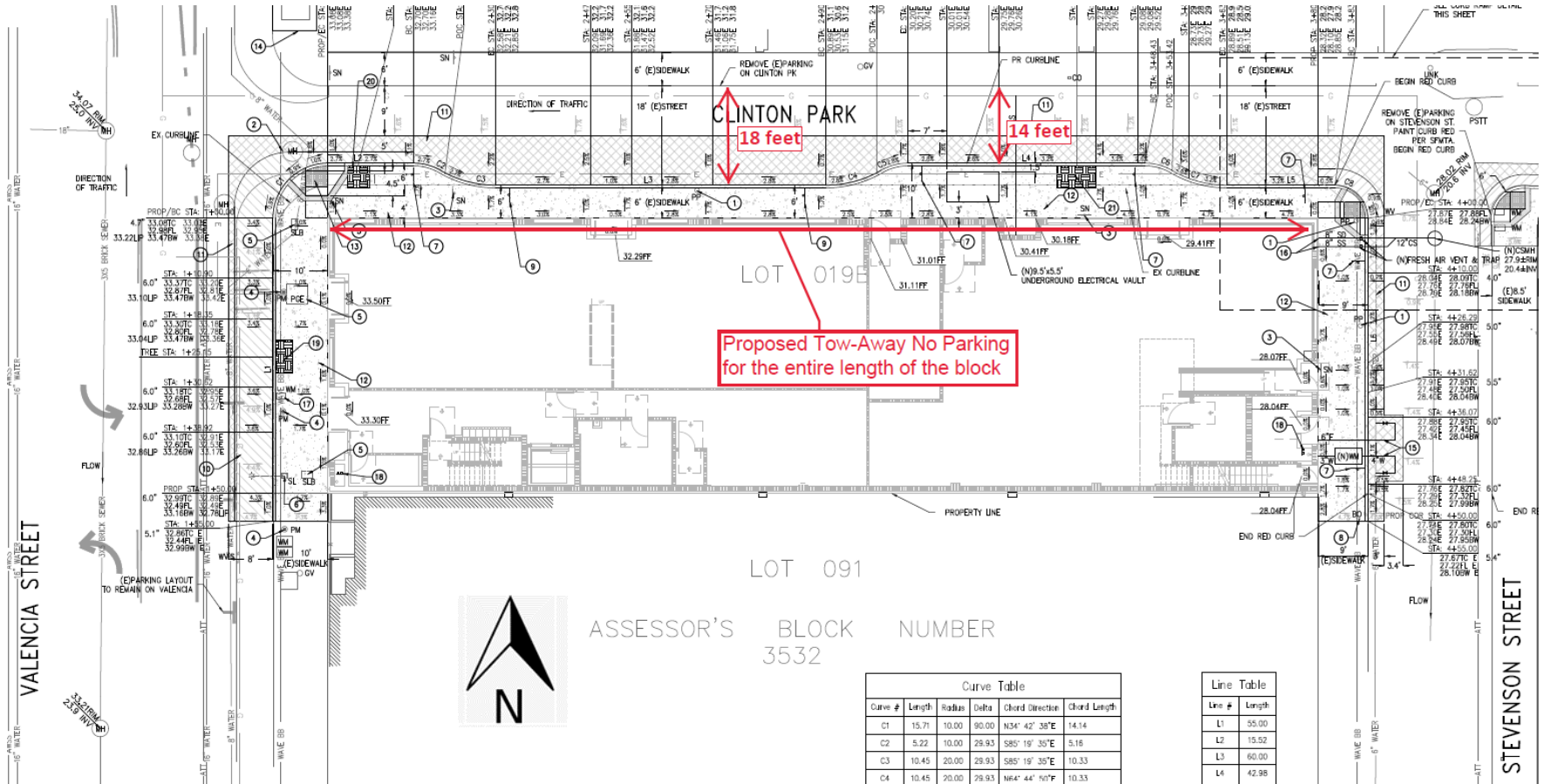
Leavenworth Street, east side, from McAllister to 159 feet southerly (per business, SFPD, and Department of Homeland Security request. Removes the TANSAT on one side of the street whilst keeping vehicles from parking on the plaza) (Supervisor Districts 3, 6, 8, and 10) (Requires approval by the SFMTA Board) Ian Trout, [ian.trout@sfmta.com](mailto:ian.trout@sfmta.com)



Conference Line: **1-888-398-2342** (use participation code: 8647385)

To comment on an item, press "1" and then "0" when prompted.

**21. ESTABLISH – TOW-AWAY NO PARKING ANYTIME**  
**Clinton Park, south side, from Valencia Street to Stevenson Street (Supervisor District 6) (Requires approval by the SFMTA Board) Larry Yee, larry.yee@sfmta.com**



**Conference Line: 1-888-398-2342 (use participation code: 8647385)**  
 To comment on an item, press "1" and then "0" when prompted.

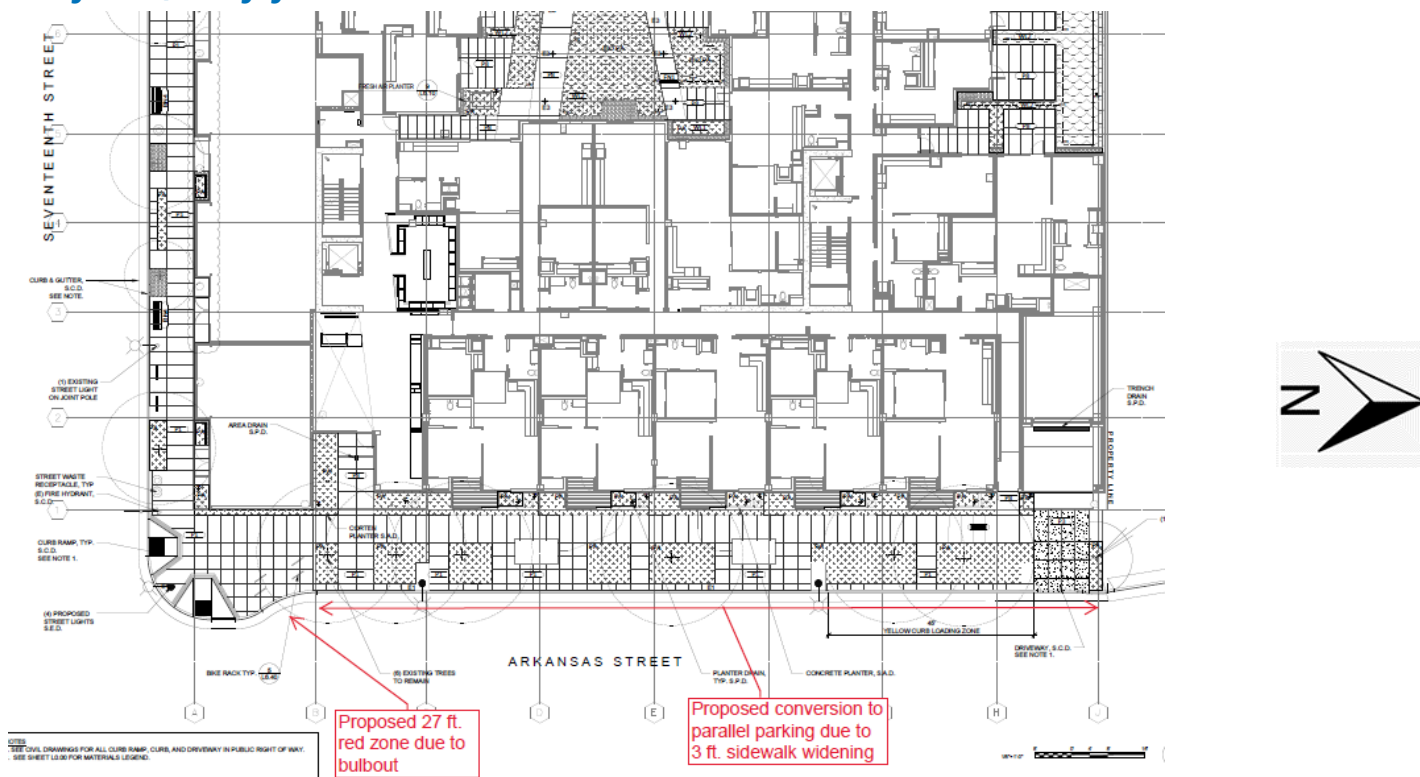
**22(a). ESTABLISH – RED ZONE**

Arkansas Street, west side, from 17th Street to 27 feet northerly (Approvable by the City Traffic Engineer)

**22(b). RESCIND – PERPENDICULAR PARKING**

**ESTABLISH – PARALLEL PARKING**

Arkansas Street, west side, from 27 feet to 218 feet northerly (Supervisor District 10) (Requires approval by the SFMTA Board) Larry Yee, larry.yee@sfmta.com



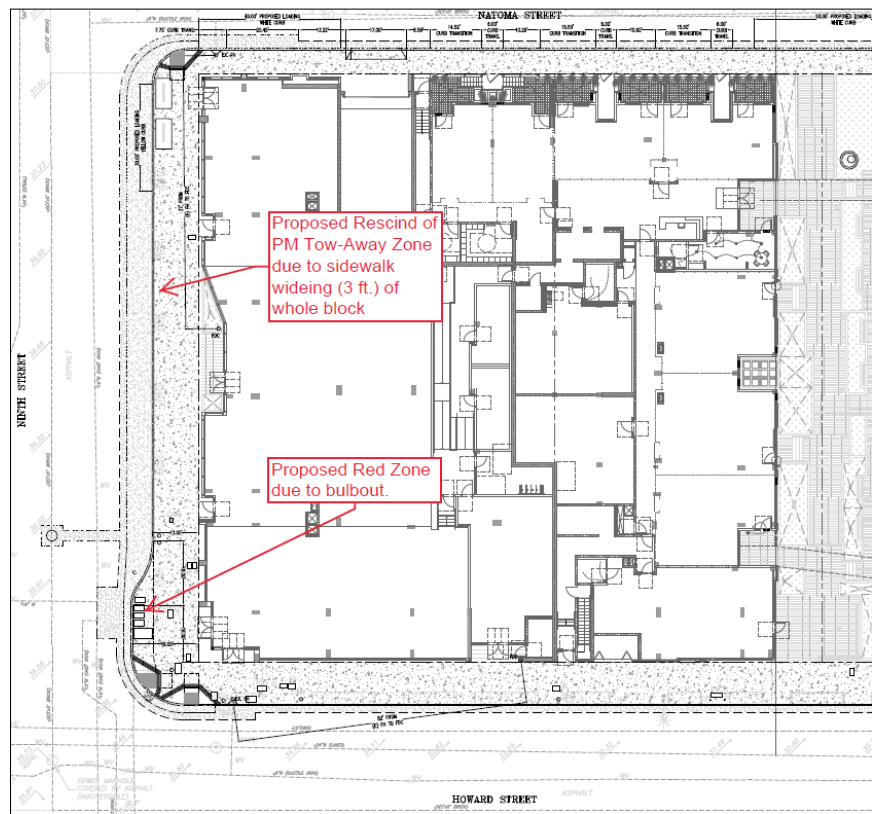
Conference Line: **1-888-398-2342** (use participation code: 8647385)  
To comment on an item, press "1" and then "0" when prompted.



23(a). RESCIND – TOW-AWAY, NO STOPPING, 4 PM TO 7 PM, MONDAY THROUGH FRIDAY  
9th Street, east side, between Howard Street and Natoma Street (Requires approval by the SFMTA Board)

23(b). ESTABLISH – RED ZONE

9th Street, east side, from Howard Street to 32 feet northerly (removes 2 metered spaces)  
(Supervisor District 6) (Approvable by the City Traffic Engineer) Larry Yee, larry.yee@sfmta.com



Conference Line: **1-888-398-2342** (use participation code: 8647385)

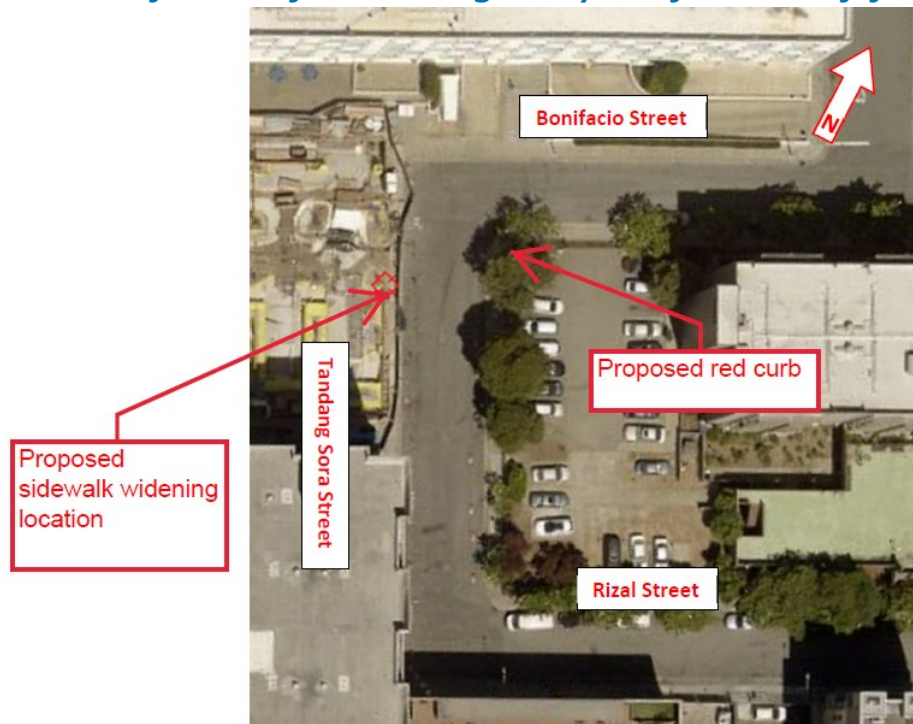
To comment on an item, press "1" and then "0" when prompted.

**24(a). ESTABLISH – TOW AWAY NO STOPPING ANYTIME  
ESTABLISH – SIDEWALK WIDENING**

Tandang Sora Street, west side, from Bonifacio Street to 108 feet southerly (4.5-foot sidewalk widening, removes 4 parking spaces) (Requires approval by the SFMTA Board)

**24(b). ESTABLISH – RED ZONE**

Tandang Sora Street, east side, from Bonifacio Street to 20 feet southerly  
Bonifacio Street, south side, from Tandang Sora Street to 20 feet easterly  
(Supervisor District 6) (Approvable by the City Traffic Engineer) Larry Yee, [larry.yee@sfmta.com](mailto:larry.yee@sfmta.com)



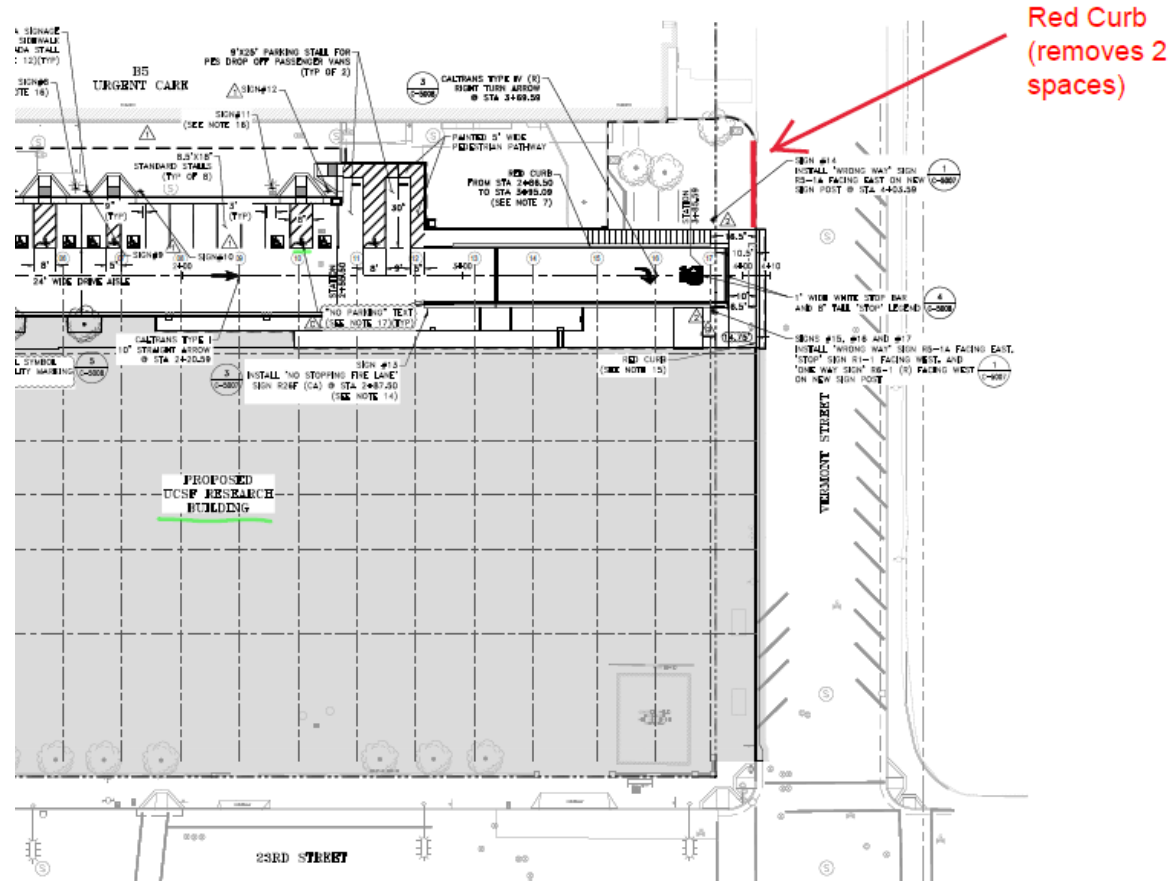
Conference Line: **1-888-398-2342** (use participation code: 8647385)

To comment on an item, press "1" and then "0" when prompted.

## 25. ESTABLISH – RED ZONE

Vermont Street, west side, from 195 to 225 feet north of 23rd Street

(Supervisor District 10) (Approvable by the City Traffic Engineer) Norman Wong, [norman.wong@sfmta.com](mailto:norman.wong@sfmta.com)



Conference Line: **1-888-398-2342** (use participation code: 8647385)

To comment on an item, press "1" and then "0" when prompted.



# Public Hearing Decision Posting

Results will be posted by  
5 PM next Friday

<https://www.sfmta.com/calendar/engineering-public-hearing-meeting-august-13-2021>

## Referenced Materials

Engineering Public Hearing Agenda, July 17, 2020

 [Engineering Public Hearing Agenda, July 17, 2020](#)

Engineering Public Hearing Results, July 17, 2020

 [Engineering Public Hearing Results, July 17, 2020](#)





SFMTA

# Next Engineering Public Hearing September 3, 2021

<https://sfmta.com/enghearing>

Conference Line: 888-398-2342

Participation Code: 8647385#