



Mission Street SoMa Transit Improvements

SFMTA Board of Directors
June 15, 2021



Project Background



Project Area



- 11th Street to 1st Street
- Muni 14 Mission, 14R Mission Rapid (& 14X pre-COVID), plus Golden Gate Transit, SamTrans regional express buses
- Other Muni routes (9 San Bruno, 9R San Bruno Rapid) during Better Market Street construction

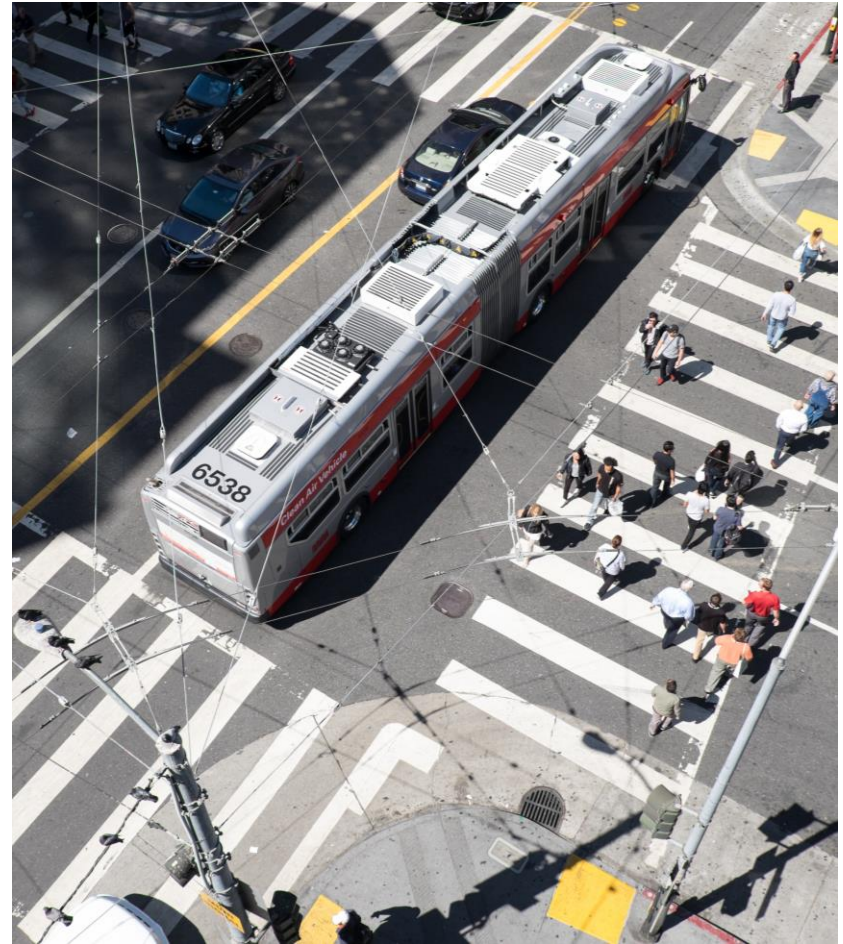
Transit Performance (Current & Pre-COVID)

- Muni buses per hour, each way (current): 25
- Avg speed, PM rush hour (14, pre-COVID): < 6 mph
- Headway adherence (14, April 2020): ~65%



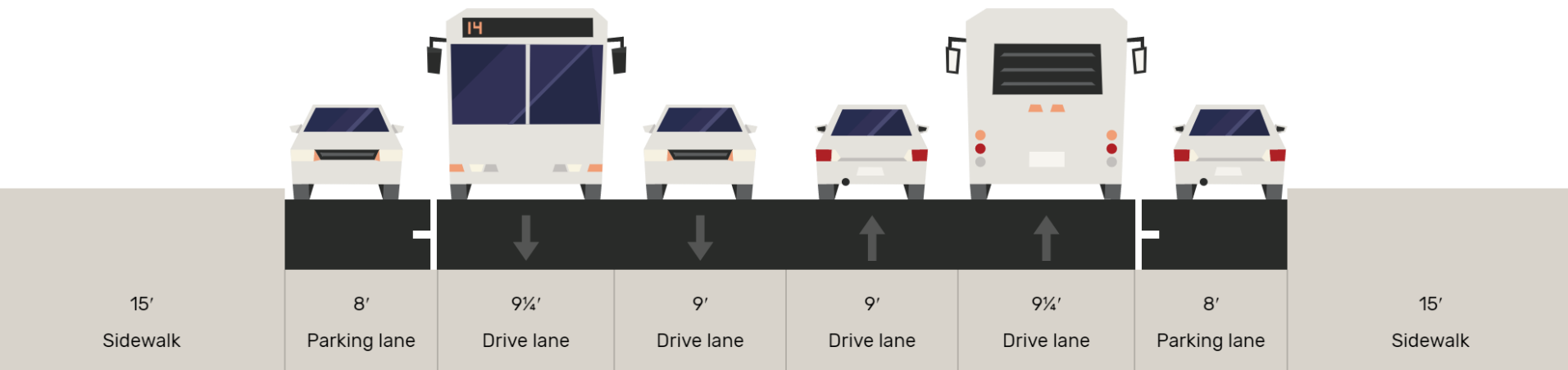
Project Goals and Potential Benefits

- Reduce delay for transit, improving travel times and reliability
- Increase capacity for transit
- Make operations safer and more efficient
- Improve pedestrian safety
- Focus investment on corridor with high number of riders of color



Previous Street Design

- Narrow lanes
- Part-time bus lanes
- Tow-away restrictions on parking and loading when bus lanes in effect

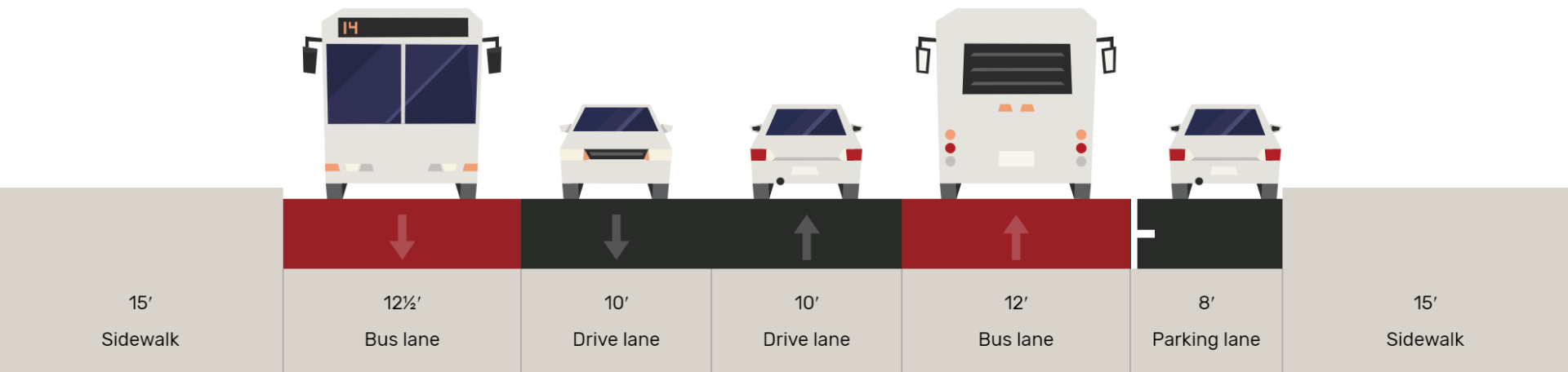


Previous Street Design



Temporary Transit Lanes Design

- Parking and loading removed on one side of the street (varying by block)
- Parking and loading **allowed at all times** on other side
- Bus lanes made **full-time** (not yet red)



Temporary Transit Lanes Design



Outreach Program

- **Virtual Open Houses (pre- and post-Temporary Emergency Transit Lane - TETL)**
 - Included narrated presentation
 - Virtual office hours with live Q&A
 - Language interpretation as requested
- **Digital Platforms**
 - Project webpage, blog posts, email updates, social media and radio ads

Outreach Program

Direct outreach to businesses, social service providers and schools

- Mailed loading zone survey in Spanish, Chinese, Filipino to every business and non-profit
- Phone calls to all businesses and non-profits
- As-needed direct conversations with businesses and non-profits to discuss loading needs, impacts and mitigations

Evaluation Methods

- **Technical evaluation**
 - Collected data on project benefits and impacts
- **Community survey**
 - Questions on perceptions of project benefits and impacts
- **Merchant loading zone survey**
 - Questions on loading needs and opportunity to provide feedback on TETL changes
- **Operator survey**
 - Questions on project performance/operational impacts

Initial Evaluation Results

- Transit travel times declined by 18-20%
- Hours of yellow zone availability increased by nearly 40%
- In public survey, 65% support for making lanes permanent

Initial Evaluation Results

- **Double-parking** citations more than doubled post-project; also cited by operators as a challenge
- Route-level **headway adherence** steady at 80-85%
- Numbers of **transit-involved collisions** have remained low since onset of COVID-19
- Numbers of **vehicular collisions** declined by nearly 60%, and **ped-involved collisions** by 40%

Initial Evaluation Results

- In **public survey**, large pluralities said Muni service had improved, driving, parking and loading had worsened
- 68% of respondents to **loading survey** said their business or property had been impacted

Other Project Elements

- Refinements to parking and loading based on feedback
- Red lanes for transit
- Room for more buses at stops
- Wider sidewalk at 4th
- Stop moved across intersection inbound at 11th
- Turn restrictions and requirements at Washburn, 11th



Today's Legislation

- Conversion of part-time to **full-time transit lanes**
- **Parking and loading changes**
 - Net reduction of approximately 175 parking spaces in 1½ miles (most already removed, and towaway restrictions rescinded on remaining)
 - Slight increase in commercial (+1), decrease in passenger (-8) loading spaces (many spaces relocated)
- **Relocate bus stop** across street at 11th
- **Left- turn restriction WB** at Washburn and **right-turn requirement EB** at 11th

Next Steps

- **Permanent legislation critical** to maintain current benefits, as TETL will expire 120 days after emergency order is lifted
- Quick build project in place, further implementation starting **this year**
- May be **phased** based on funding (e.g., colorization, 4th St bulb can be added later)

Thank You

- Questions?

