



SFMTA
Municipal
Transportation
Agency

Inner Sunset Streetscape Improvement Project

Operations and Customer Service Committee

July 11, 2017



Inner Sunset Streetscape Improvement Project

Irving Street and N Judah Overview

Photo by Flickr user telesle17

- Vibrant commercial and dense residential
- One wide lane in each direction
- 40,000+ daily N Judah riders
- 8 mph average speed outside subway



Opportunities on Irving

- Repaving - spring 2015
- Transit Effectiveness Project
- WalkFirst
- Transit signal priority



Tools – Sidewalk Widening / Transit Bulbs

- Faster safer boarding
- Encourages boarding from all doors, less front-door crowding
- Improves pedestrian safety
- Added space for streetscape amenities

Carl/Cole - Before



Carl/Cole - After



Streetscape Amenity Options



Bicycles and Transit Bulbs



Past Public Outreach as Muni Forward (TEP)

- 18 Public Workshops
- 100+ meetings with community groups b/w 2006-2008
- Two N-Judah Muni Forward workshops in Spring 2012
- Open House for Inner Sunset Muni Forward on January 30, 2014
- All draft proposals available at www.sfmta.com/irving
- Conducted surveys, presentations, neighborhood walks and participated in street fairs from June 2014 up to present
- Public Meeting to review concept designs on April 23, 2015

Project Overview

The project will create new transit loading areas, curb ramps, replace sewers and water lines, improve landscape and traffic lights, and pave streets:

- Irving Street from Arguello Boulevard to 19th Avenue
- 9th Avenue from Irving Street to Judah Street
- 10th Avenue from Irving Street to Judah Street
- Cole Valley at Carl and Cole streets, and Carl and Stanyan streets



9th Avenue

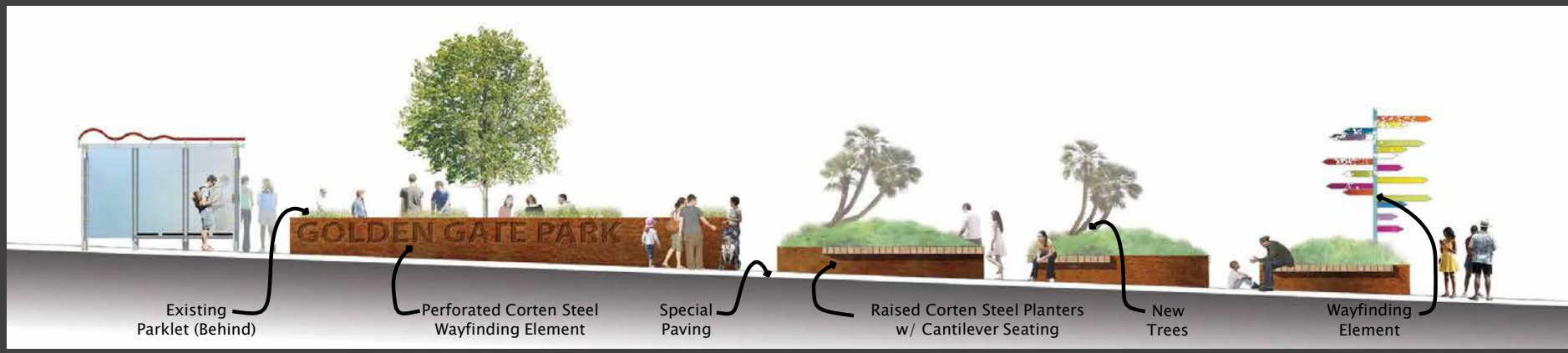
Arizmendi Bakery

Golden Gate Aquatics Center

May Arne

Nabe

SoCovMadine TheCuisine



8th Avenue

Citibank

Supercuts

Yumma's
Mediterranean Grill

Wells Fargo

8TH AVENUE

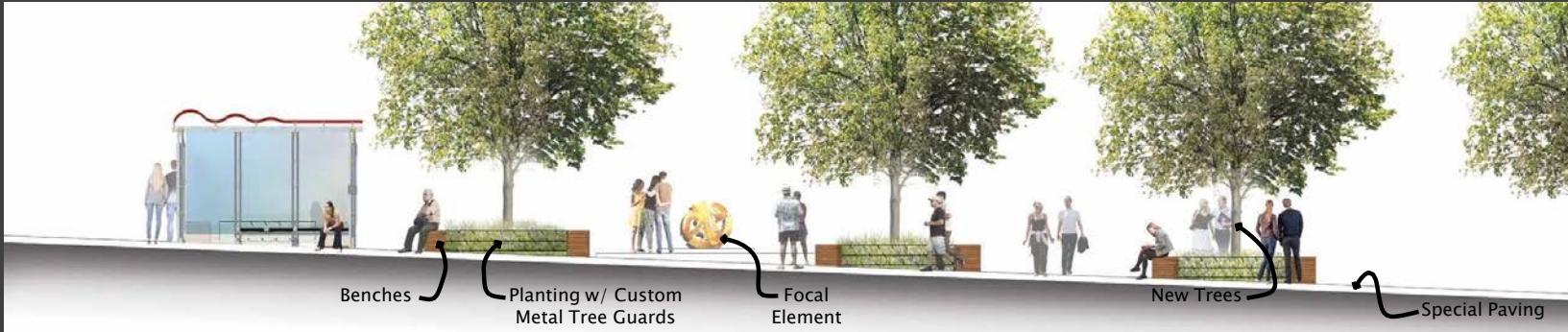
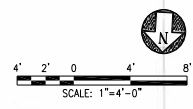


Bus Shelter

4'

IRVING STREET

(E) Tree
to Remain



Benches

Planting w/
Custom
Metal Tree
Guards

Focal
Element

New Trees

Special Paving

6th Avenue

6TH

Lime Tree
Southeast Asian
Kitchen

(E) Tree
to Remain

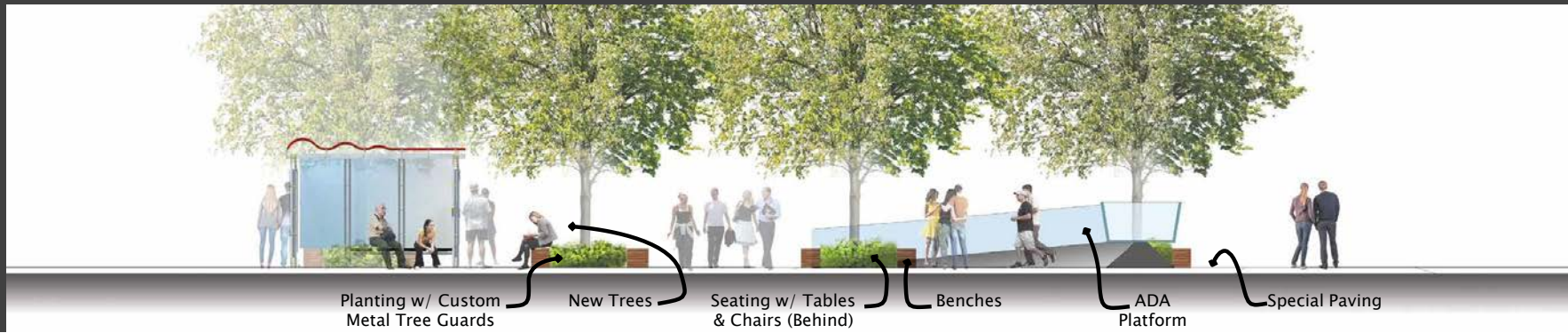
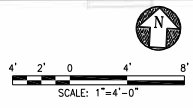
Bus Shelter

ADA Platform

IRVING STREET

4'

10.5'



Planting w/ Custom
Metal Tree Guards

New Trees

Seating w/ Tables
& Chairs (Behind)

Benches

ADA
Platform

Special Paving

5th Avenue

Martha & Bros. Coffee

Shin Dig



Carl and Cole Streets



Carl Street

PADRECITO

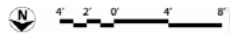
MANE ATTRACTION

LAVANDE NAIL SUPPLY

PLAN



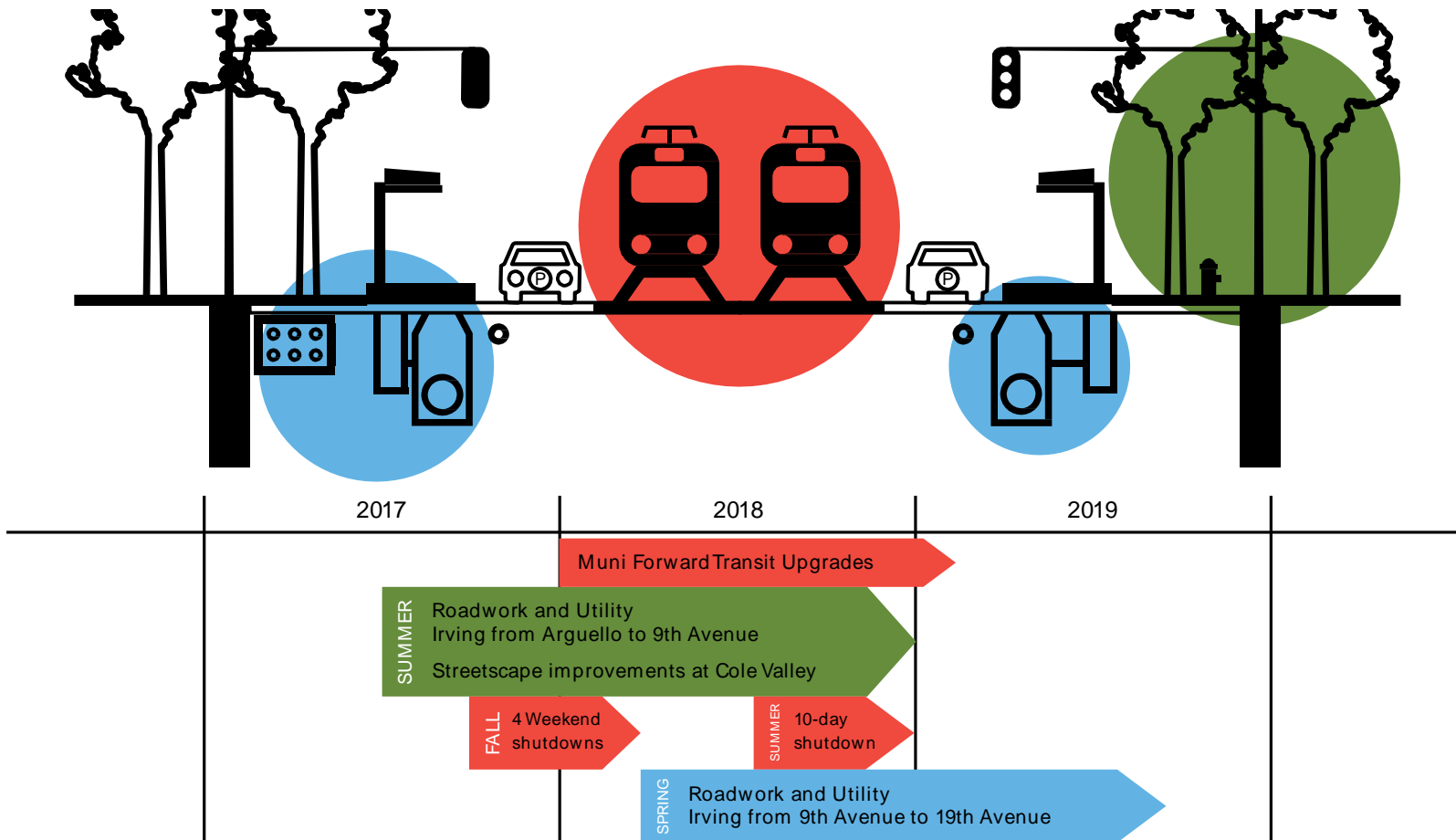
CARL STREET



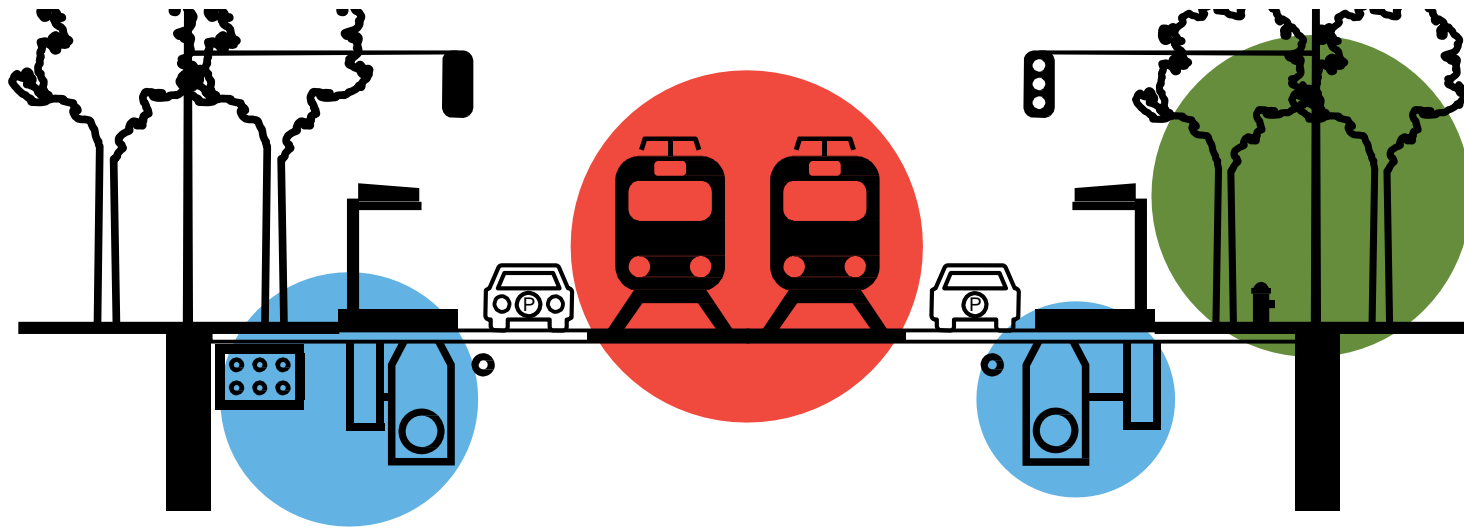
ELEVATION



Proposed Construction Timeline



Construction Elements



Muni Forward Transit Improvements and Streetscape Upgrades

Creating transit loading areas on 9th Avenue between Irving and Judah and along Irving at 5th, 6th, 8th avenues and constructing two new accessible platforms. Streetscape elements at all transit bulbouts, as well as existing stops at Carl & Cole and Carl & Stanyan.

Utility Upgrades

Sewer repair and water line replacement, replacing a segment of the emergency firefighting water system, installing traffic light system, Department of Technology fiber optic cable, then sidewalk improvements.

Pedestrian Safety Improvements and Road Work

Building sidewalk extensions, painting crosswalks, repaving the streets and curb ramp upgrades.

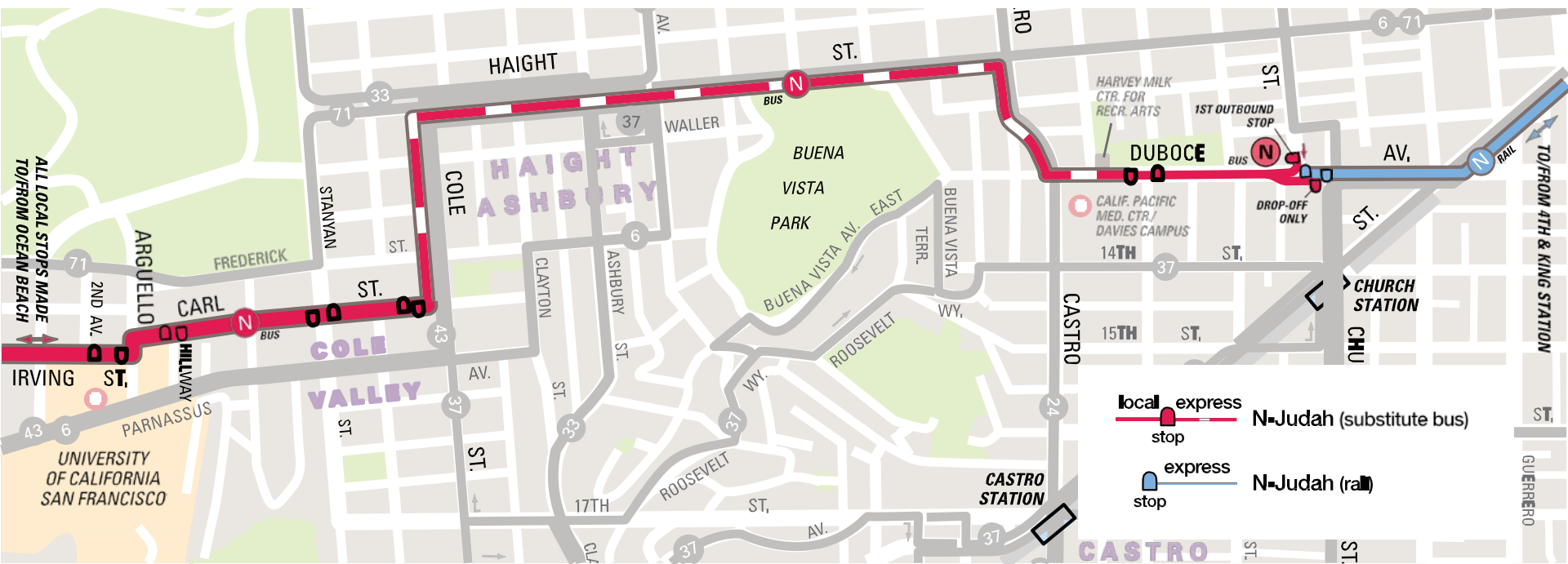
What to expect during construction

Due to construction neighborhoods will experience short-term inconveniences:

- Bus substitution for the N-Judah Line on four weekends and during a 10-day shutdown near the end of construction for road repaving.
- Temporary relocation of bus stops, street parking removal, and traffic lane and sidewalk closures
- Noise during excavation

Proposed Service Adjustments

Bus shuttle will provide substitution service during N Judah shutdowns



Ongoing Public Outreach and Engagement

- Pre-construction Open House
- Communications via email, mail, site meetings
- Work with neighborhood and merchant groups

