

# Howard Streetscape Project

Open House | November 16, 2024 | 10 – 1 pm

The presentation will begin around 10:30am...



# INTRODUCTION

## **SAN FRANCISCO MUNICIPAL TRANSPORTATION AGENCY**

- ALAN UY – PROJECT MANAGER
- ASHLEY HONG – TRANSPORTATION PLANNER
- SHAYDA HAGHGOO – TRANSPORTATION PLANNER
- BOBBY LEE – PUBLIC RELATIONS OFFICER

## **SAN FRANCISCO PUBLIC WORKS**

- CAROL HUANG – PROJECT MANAGER
- RUBY YU – ASSISTANT PROJECT MANAGER
- KATY TAYLOR – LANDSCAPE ARCHITECT

## **CIVIC EDGE CONSULTING**

# ABOUT THIS OPEN HOUSE

***WE DESIGNED THIS OPEN HOUSE TO HAVE SPECIFIC STATIONS TO ADDRESS YOUR QUESTIONS/COMMENTS AFTER THE PRESENTATION.***

THE PURPOSE OF TODAY'S OPEN HOUSE IS TO:

- PROVIDE PROJECT UPDATES
- SHARE THE LATEST DESIGN DEVELOPED WITH STAKEHOLDER COLLABORATION
- DISCUSS PROJECT TIMELINE AND UPCOMING MILESTONES

# AGENDA

POST-MEETING SURVEY/FEEDBACK – 2 MIN

PROJECT OVERVIEW & PROJECT STATUS – 3 MIN

PROJECT TIMELINE – 5 MIN

DESIGN PRESENTATION – 5 MIN

# OPEN HOUSE FEEDBACK

**STAFF ARE HERE TO ASSIST WITH QUESTIONS YOU HAVE!**

**AT END OF PRESENTATION PROCEED TO THE BOARDS FOR ADDITIONAL CONVERSATION. IF YOU HAVE A SPECIFIC QUESTION, PLEASE FIND THE BOARD MOST RELEVANT.**

## **OPEN HOUSE SURVEY**

- **COMMENTS/QUESTIONS CAN BE SUBMITTED THROUGH THE POST-MEETING SURVEY UNTIL **11/22/2024****
- **A SUMMARY OF THE SURVEY RESULTS WILL BE AVAILABLE ON THE PROJECT WEBSITE AND WILL BE SENT TO LISTSERVE SUBSCRIBERS**

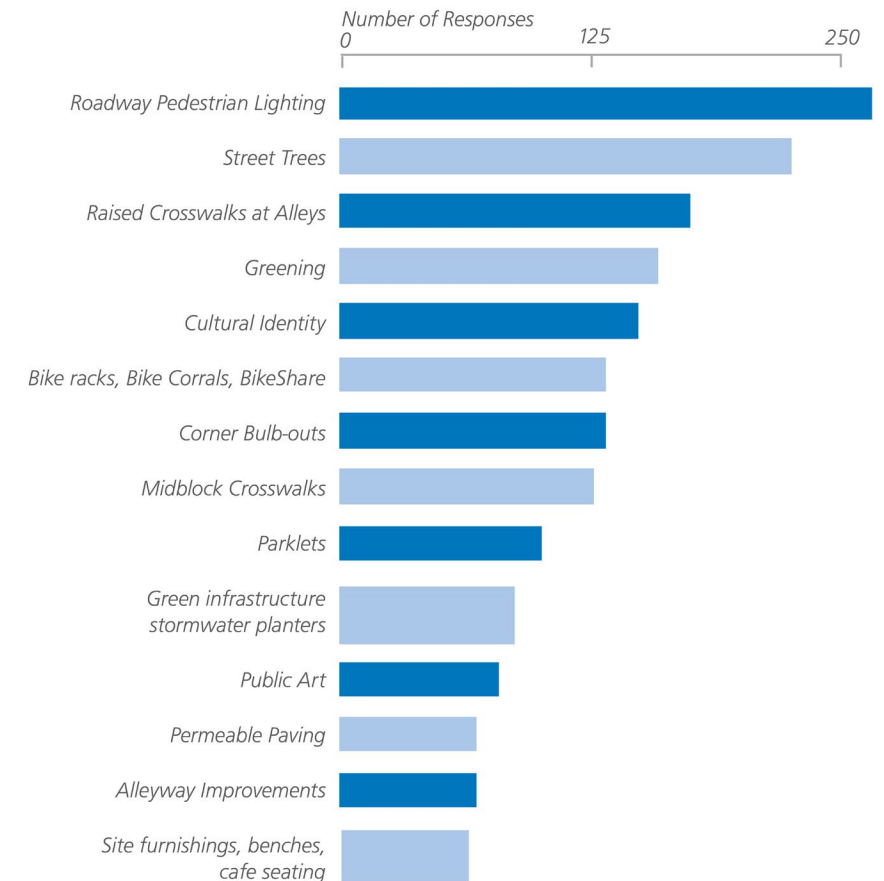
# PROJECT IMPROVEMENTS

## ***HOWARD STREET BETWEEN 4<sup>TH</sup> & 11<sup>TH</sup> STREETS:***

- TRAFFIC SIGNAL UPGRADES
- BULB-OUTS
- RAISED CROSSWALKS AT ALLEYS
- UNIQUE CULTURAL MARKERS
- LANDSCAPING IMPROVEMENTS  
(SUPPLEMENT/INFILL TREE PLANTINGS)
- NEW AND UPGRADED STREET LIGHTS
- ROADWAY BASE REPAIR & RESURFACING
- UTILITY AND DRAINAGE IMPROVEMENTS
- TWO-WAY BIKEWAYS

## **FEEDBACK FROM PREVIOUS OUTREACH**

**Roadway pedestrian lighting, street trees, and raised crosswalks at alleys are the priorities for the community enhancements.**



# PROJECT STATUS

- CURRENTLY @ 95% DESIGN
- DESIGN COMPLETION ANTICIPATED AROUND MID-YEAR 2025
- PROJECT TEAM HAS BEEN COORDINATING WITH THE FOLLOWING KEY STAKEHOLDERS ON DESIGN DEVELOPMENT:
  - ❖ LEATHER & LGBTQ CULTURAL DISTRICT
  - ❖ SOMA PILIPINAS CULTURAL HERITAGE DISTRICT
  - ❖ SOUTH OF MARKET COMMUNITY ACTION NETWORK (SOMCAN)
  - ❖ YERBA BUENA COMMUNITY BENEFIT DISTRICT
  - ❖ SOMA WEST COMMUNITY BENEFIT DISTRICT
  - ❖ SF PARK ALLIANCE

# PROJECT TIMELINE

WE ARE HERE





# PROJECT GOALS & OBJECTIVES

- 1. IMPROVE SAFETY FOR ALL USERS**
- 2. MAKE WALKING, BIKING, AND RIDING TRANSIT MORE COMFORTABLE**
- 3. REFLECT THE CULTURAL DIVERSITY AND VIBRANCY IN SOMA**
- 4. ENHANCE THE PUBLIC WAY**
- 5. SUPPORT THE HEALTH OF OUR URBAN FOREST**

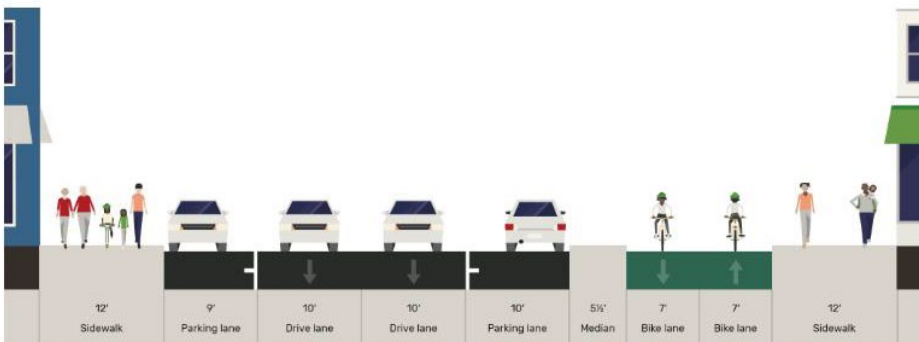
# PROJECT GOALS & OBJECTIVES

## 1. IMPROVE SAFETY FOR ALL USERS

## 2. MAKE WALKING, BIKING, AND RIDING TRANSIT MORE COMFORTABLE

- ✓ PROTECTED BIKE LANE
- ✓ SIDEWALK BULBOUTS AND SHORTER STREET CROSSINGS
- ✓ PEDESTRIAN LIGHTING

Proposed



PROTECTED BIKE LANE



CORNER CURB BULB OUT



PEDESTRIAN LIGHTING

# PROJECT GOALS & OBJECTIVES

**3. REFLECT THE CULTURAL DIVERSITY AND VIBRANCY IN SOMA**

**4. ENHANCE THE PUBLIC WAY**

**5. SUPPORT THE HEALTH OF OUR URBAN FOREST**

- ✓ LOCAL NEIGHBORHOOD FEATURES
- ✓ EXPANDED SIDEWALK WITH PAVERS AND SEATING
- ✓ NEW PLANTING AND EXPANDED TREE WELLS AT EXISTING TREES



DECORATIVE CROSSWALKS

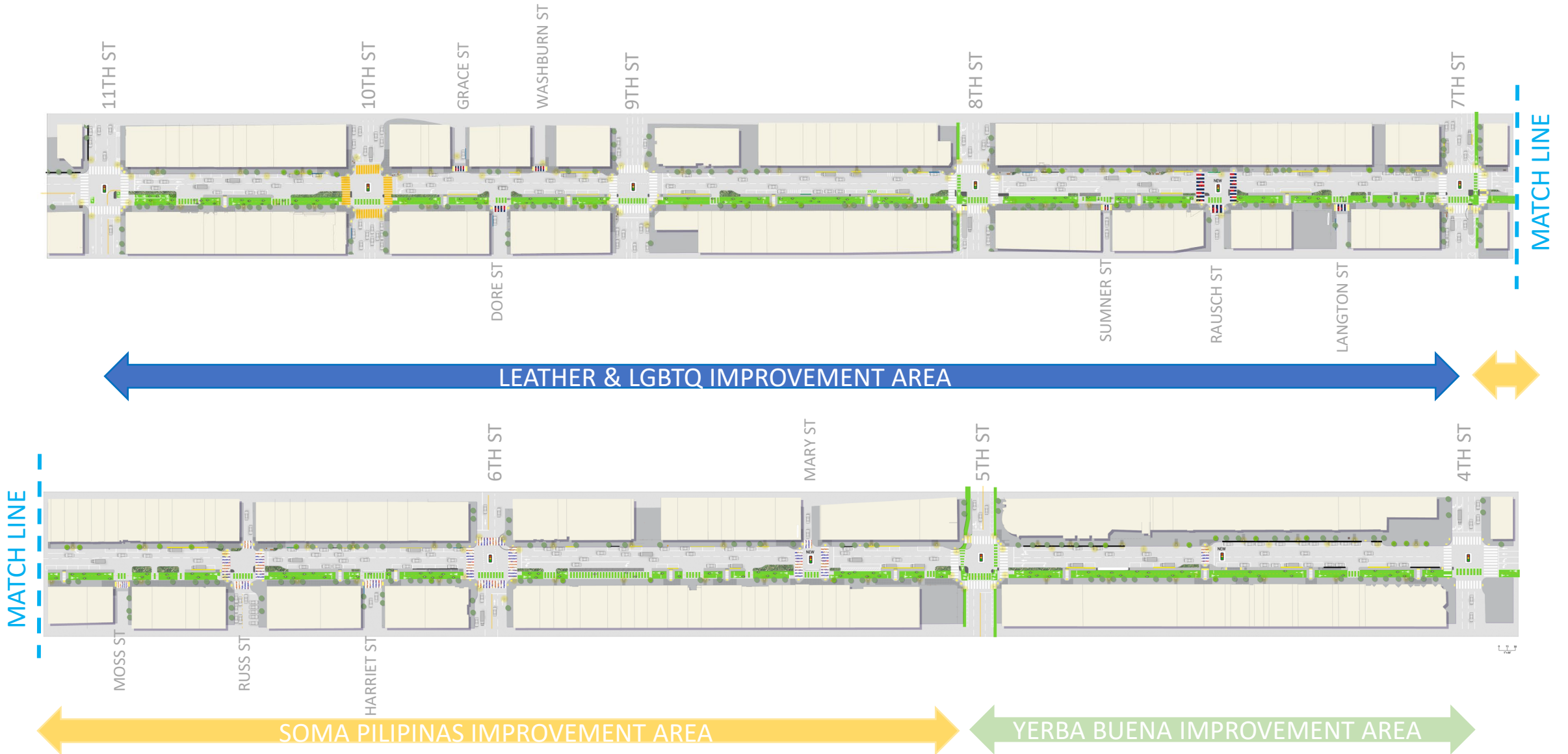


PAVERS AND BENCHES



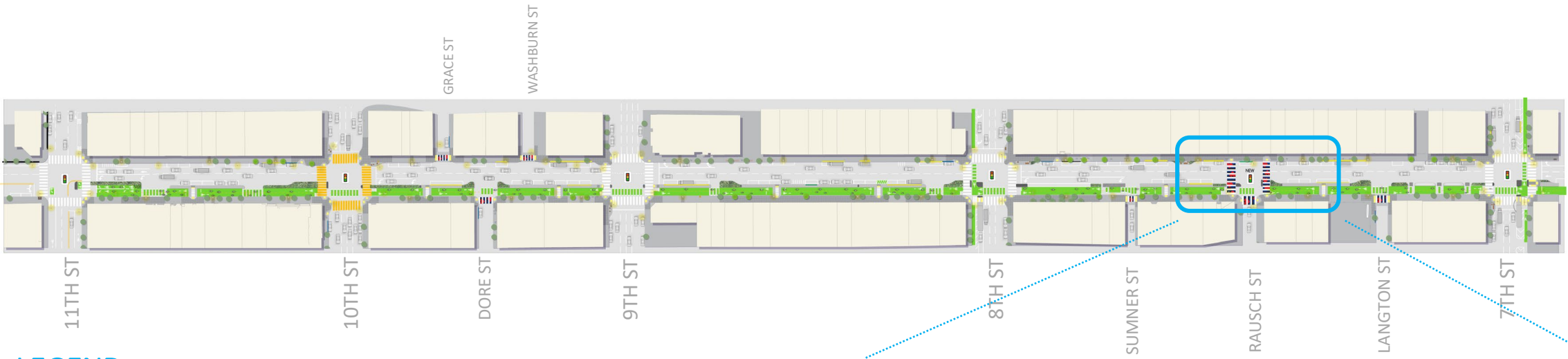
TREES AND GROUNDCOVER

# PROJECT PLAN



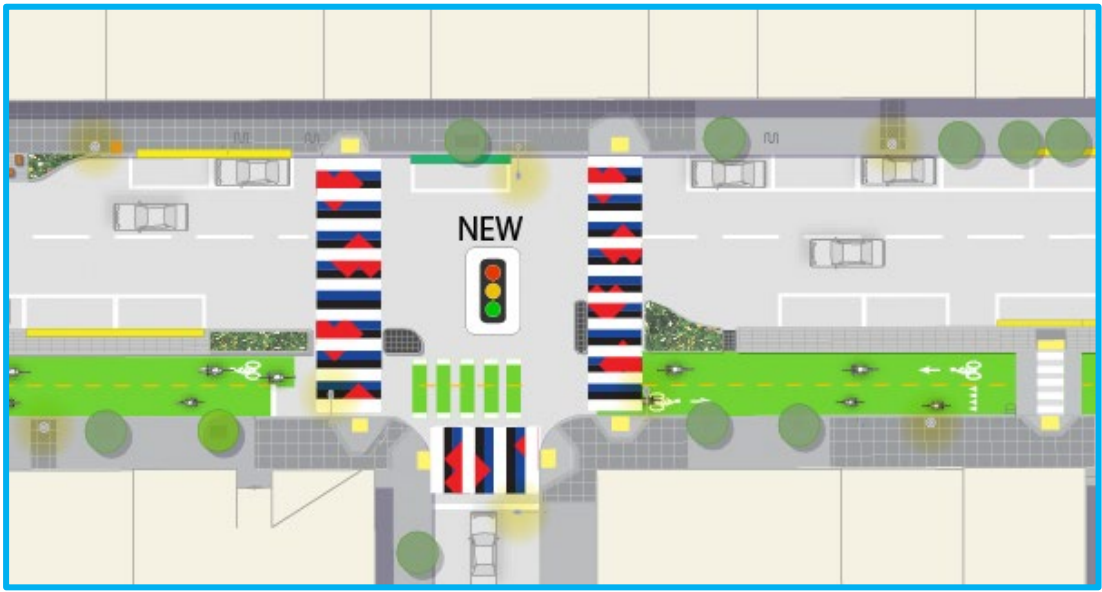


# LEATHER & LGBTQ IMPROVEMENT AREA



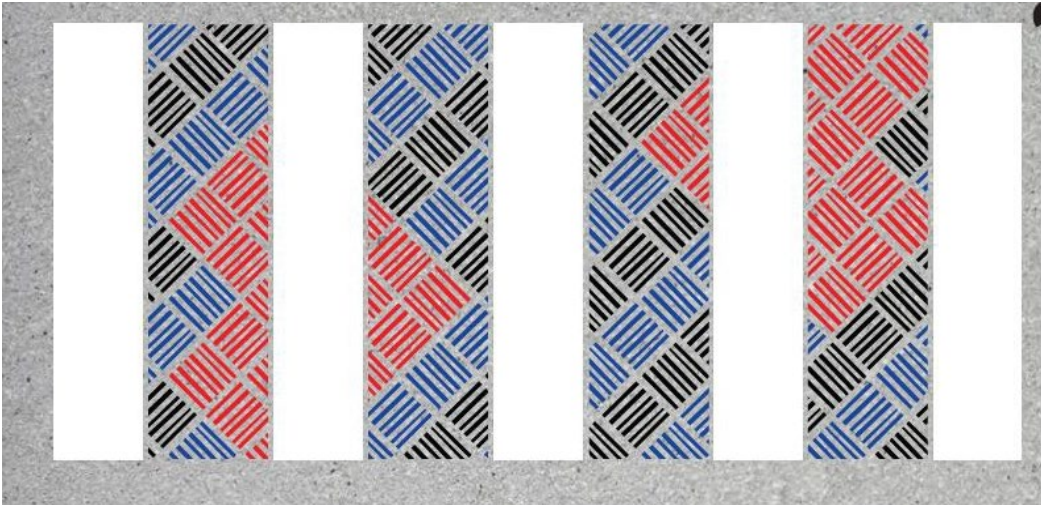
## LEGEND

- |                      |  |                 |  |
|----------------------|--|-----------------|--|
| NEW CONCRETE PAVING  |  | LOW PLANTING    |  |
| PAVERS               |  | EXISTING TREE   |  |
| DECORATIVE CROSSWALK |  | NEW TREE        |  |
| RAISED CROSSWALK     |  | BENCH           |  |
| TRUNCATED DOMES      |  | BIKE RACK       |  |
| PEDESTRIAN LIGHT     |  | CULTURAL PLAQUE |  |

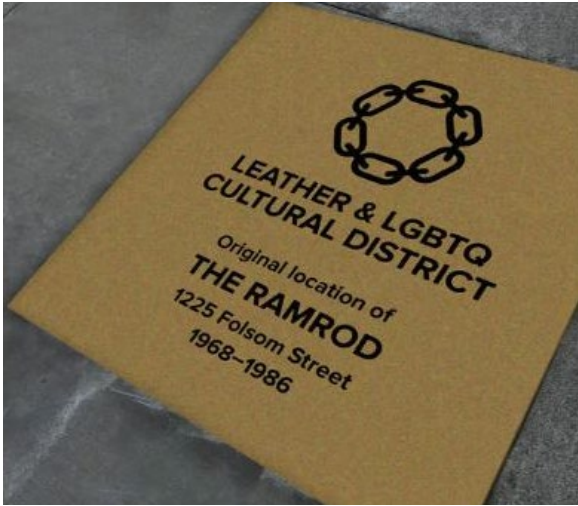


HOWARD ST & RAUSCH ST

# LEATHER & LGBTQ AREA FEATURES



DECORATIVE CROSSWALK DESIGN



CULTURAL PLAQUE



POLE WRAP

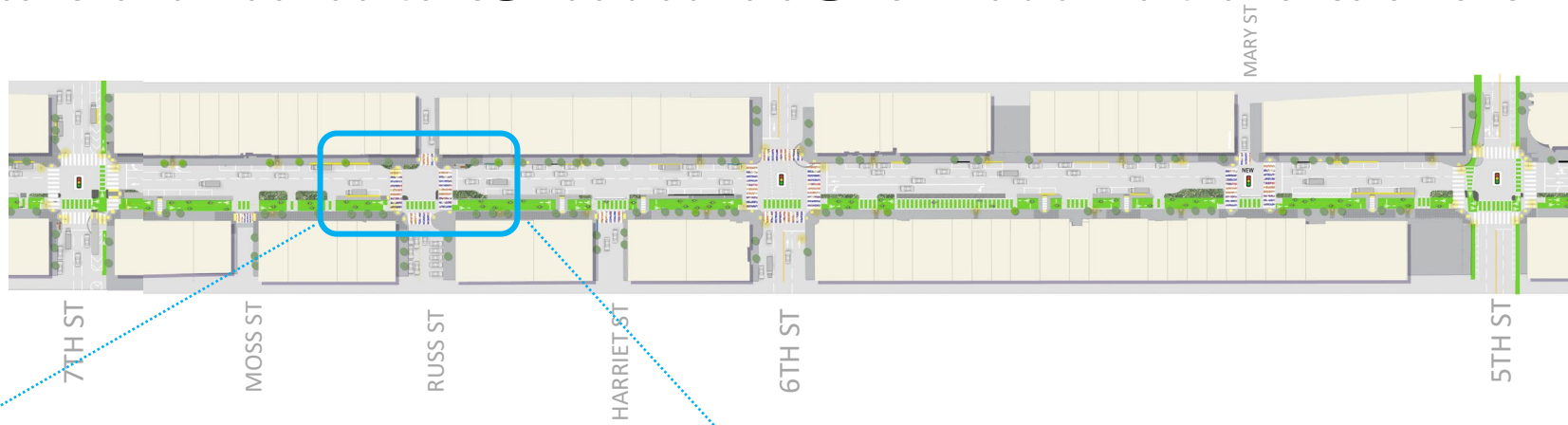


BENCH/SEAT Model: Landscape Forms Plainwell



BIKE RACK

# SOMA PILIPINAS IMPROVEMENT AREA



HOWARD ST & RUSS ST

## LEGEND

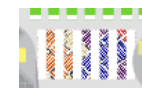
NEW CONCRETE PAVING



PAVERS



DECORATIVE CROSSWALK



RAISED CROSSWALK



TRUNCATED DOMES



PEDESTRIAN LIGHT



LOW PLANTING



EXISTING TREE



NEW TREE



BENCH



BIKE RACK



CULTURAL PLAQUE





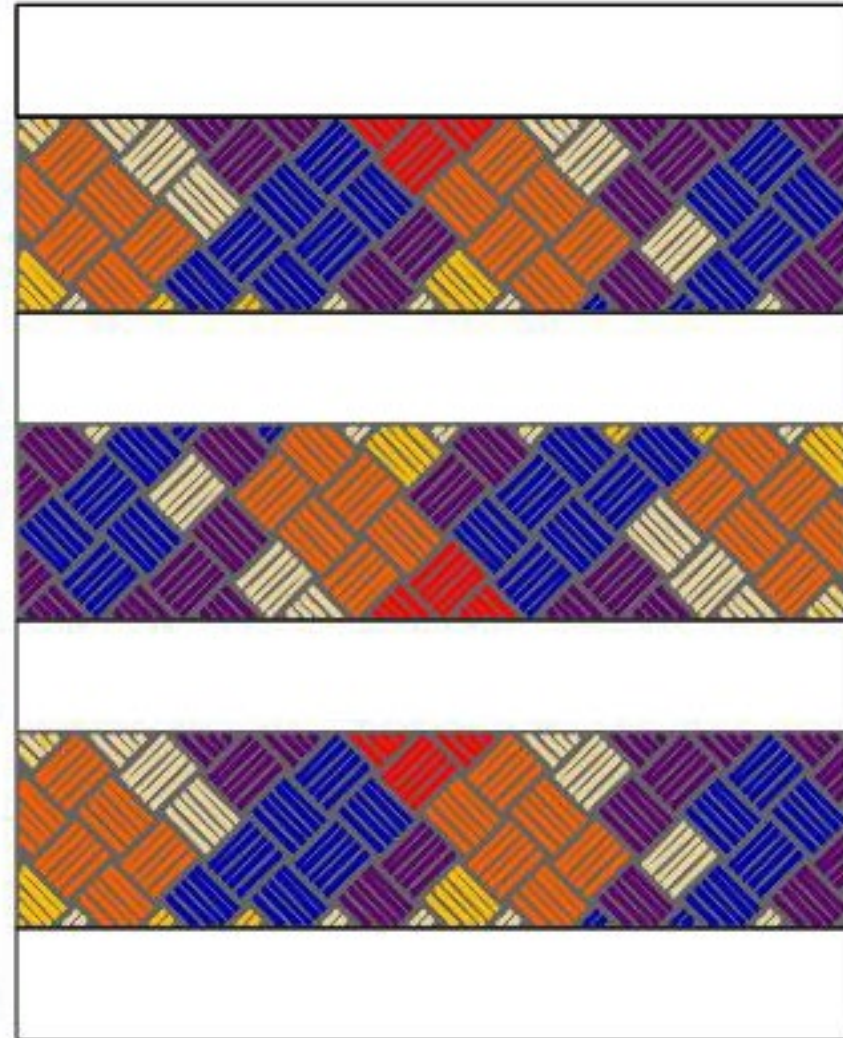
# SOMA PILIPINAS AREA FEATURES



BENCH/SEAT MODEL: LANDSCAPE FORMS PARK VUE

**SOMA Pilipinas**  
**Filipino Cultural Heritage District**

CULTURAL DISTRICT SIGN- POLE MOUNTED



DECORATIVE CROSSWALK DESIGN



# YERBA BUENA IMPROVEMENT AREA



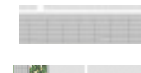
HOWARD BETWEEN 4TH AND 5TH

## LEGEND

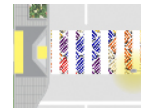
NEW CONCRETE PAVING



PAVERS



DECORATIVE CROSSWALK



RAISED CROSSWALK



TRUNCATED DOMES



PEDESTRIAN LIGHT



LOW PLANTING



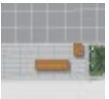
EXISTING TREE



NEW TREE



BENCH



BIKE RACK



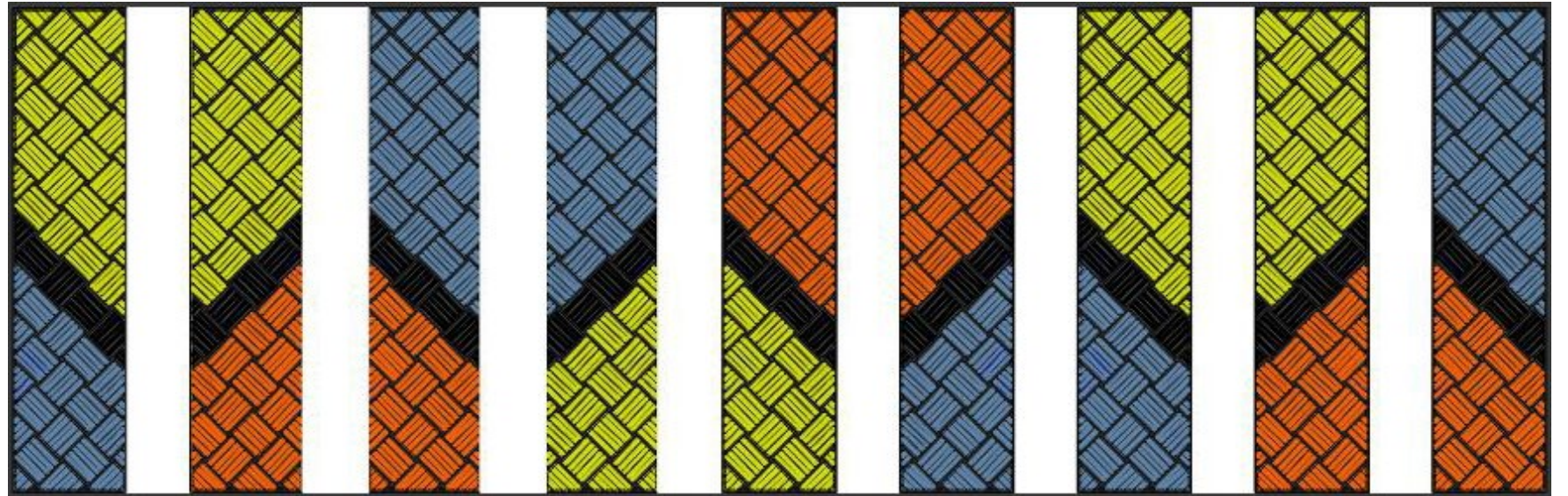
CULTURAL PLAQUE



# YERBA BUENA AREA FEATURES



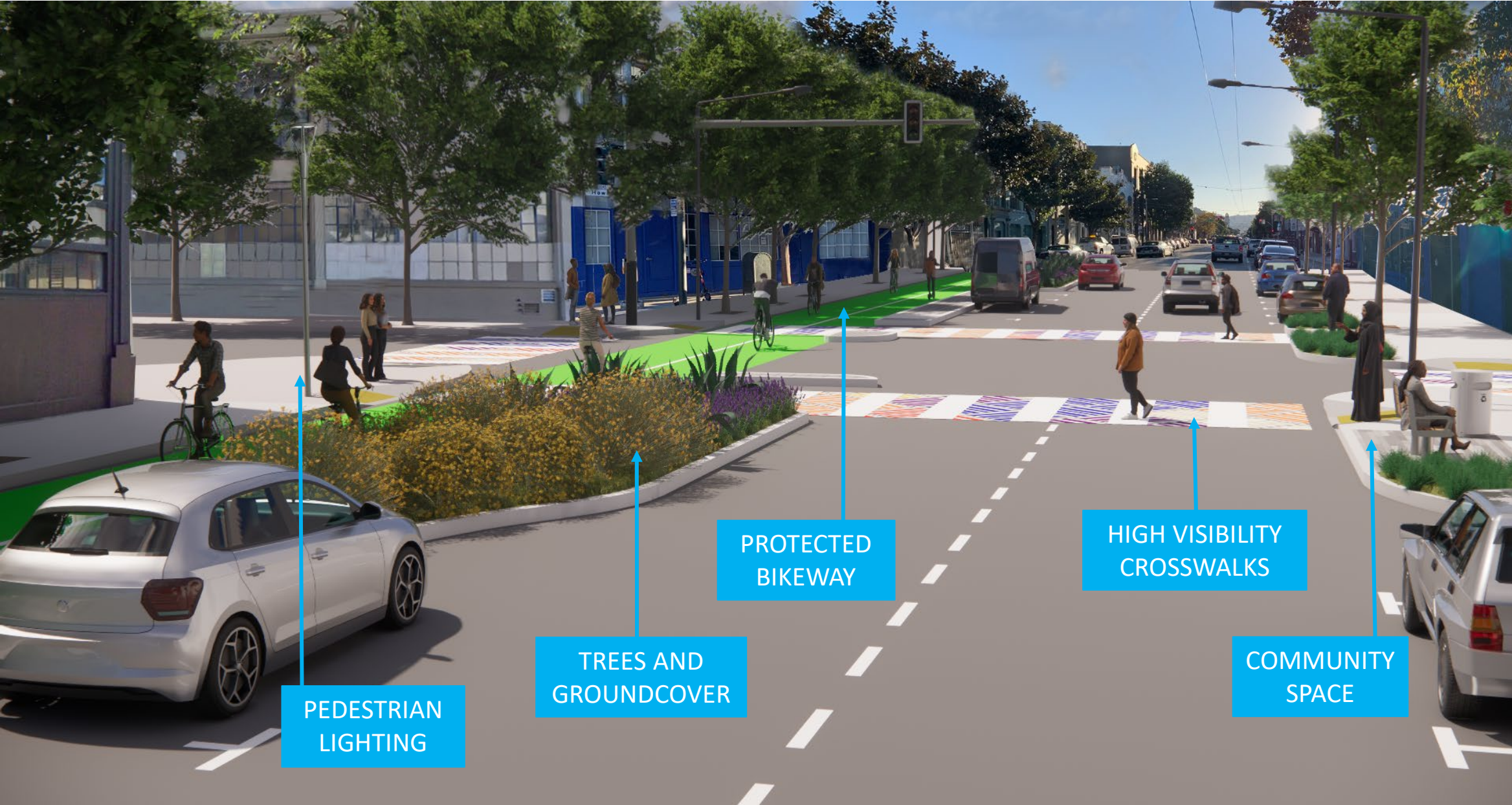
BIKE RACK



DECORATIVE CROSSWALK DESIGN



# COMMUNITY ENHANCEMENTS



# CONTACT & COMMENTS

FOR REGULAR PROJECT UPDATES, VISIT THE PROJECT WEBSITE:

<https://www.sfmta.com/projects/folsom-howard-streetscape-project>

FOR QUESTIONS OR MORE INFORMATION, PLEASE SEND EMAIL TO

[howard@sfmta.com](mailto:howard@sfmta.com)

# POST-MEETING SURVEY

PLEASE VISIT OUR TABLES TO OBTAIN THE SURVEY/SURVEY LINKS AND LEAVE US YOUR COMMENTS/QUESTIONS.

# TABLING SESSION

- PROJECT OVERVIEW - **ASHLEY HONG & BOBBY LEE**
- SAFETY & OUTREACH - **ASHLEY HONG & BOBBY LEE**
  
- COMMUNITY ENHANCEMENTS - **KATY TAYLOR**
- PARKING & BUSINESS NEEDS - **SHAYDA HAGHGOO**
- SURVEYS & MERCHANT ENGAGEMENT SHEETS
  
- HOWARD PROJECT MAP SCROLL (LARGE TABLE) - **ALAN UY & CAROL HUANG**
- CONSTRUCTION - **RUBY YU**

**THANK YOU FOR YOUR ATTENDING AND WE  
APPRECIATE YOUR SUPPORT!**

