



SFMTA

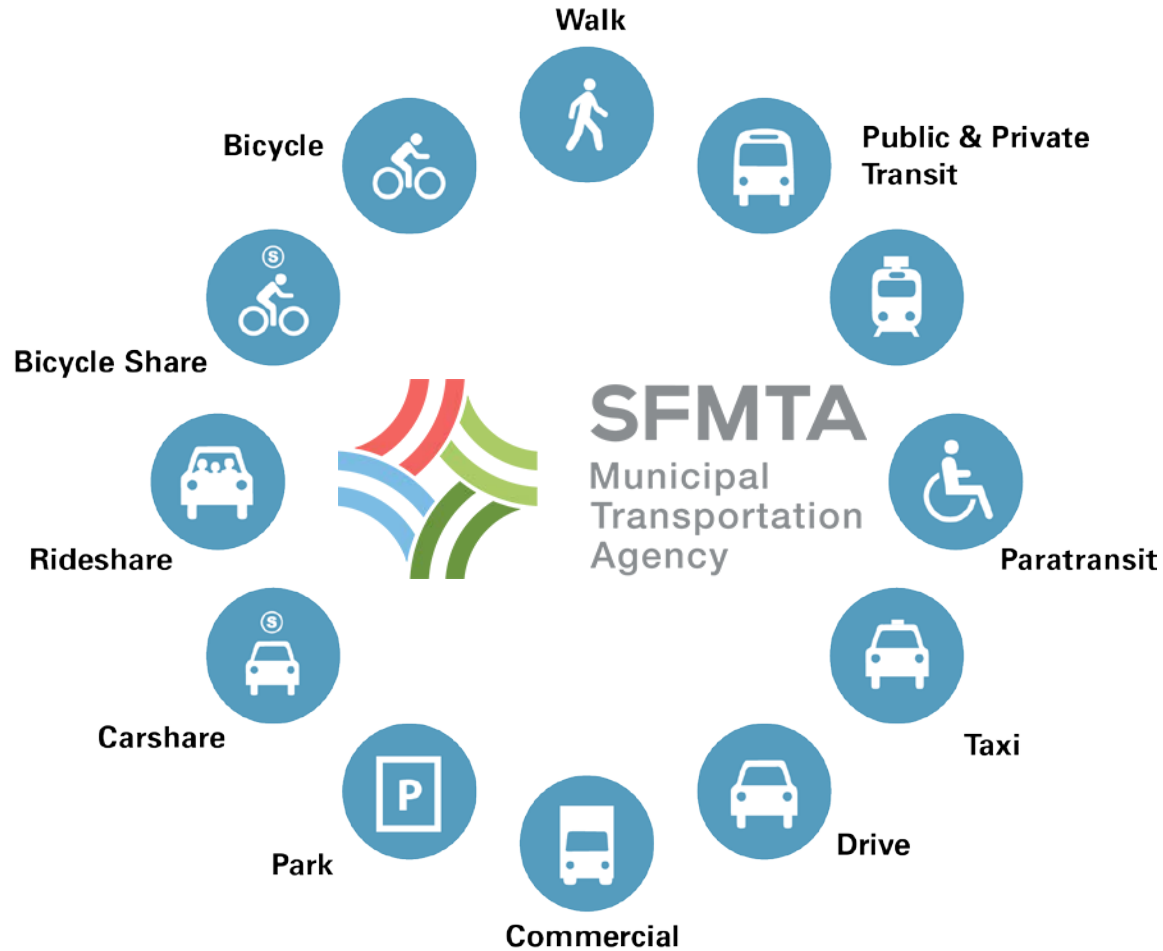
Municipal
Transportation
Agency

Sunset Tunnel Trackway Improvement Project

01/29/14

**SAN FRANCISCO,
CALIFORNIA**

What is SFMTA ?



The San Francisco Municipal Transportation Agency (SFMTA) keeps the City moving.

SFMTA's Transit Fixed Guideway Capital Improvement Program

Investment in the Muni system by working to maintain its infrastructure in a state of good repair.

**REPAIRING,
RENEWING &
IMPROVING
YOUR MUNI
SYSTEM**

**CHURCH
& DUBOCE**
TRACK & STREET IMPROVEMENT PROJECT



**JANUARY 3 TO
SUMMER 2011**

Due to Phase Two of the California Street Cable Car Infrastructure Improvement Project

**Muni Bus Shuttles will
Substitute for the California
Street Cable Car Line**

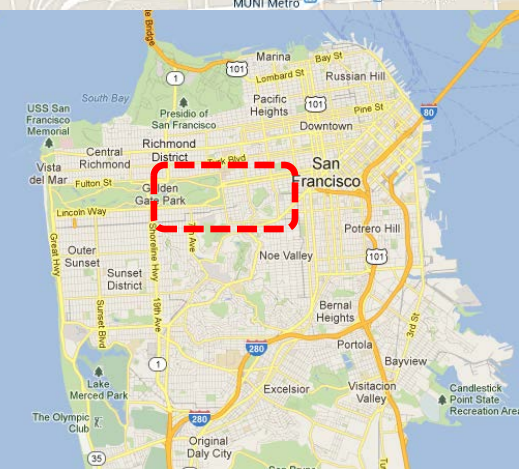
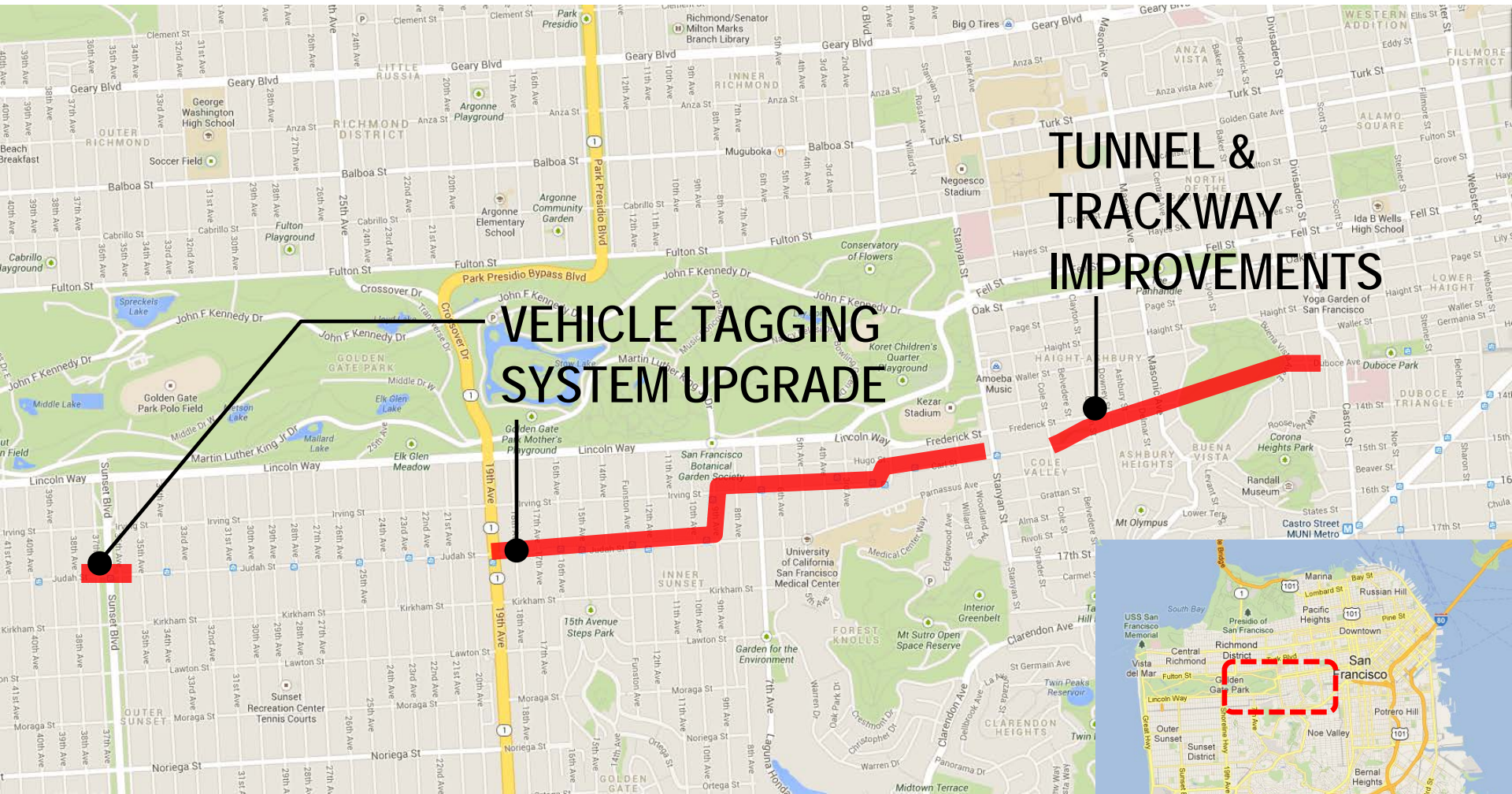
Thank you for your continued support and patience as we renew your Muni system.

For further information, please visit
www.sfmta.com/cablecar or call 311.

SFMTA Municipal Transportation Agency
For More info, schedule, bus and accessible services information please visit www.sfmta.com or call 311



Project Areas



Project Benefits

- Enhance system reliability and efficiency
- Reduce infrastructure maintenance
- Upgrade the seismic performance of tunnel structures
- Improve travel times and on-time performance

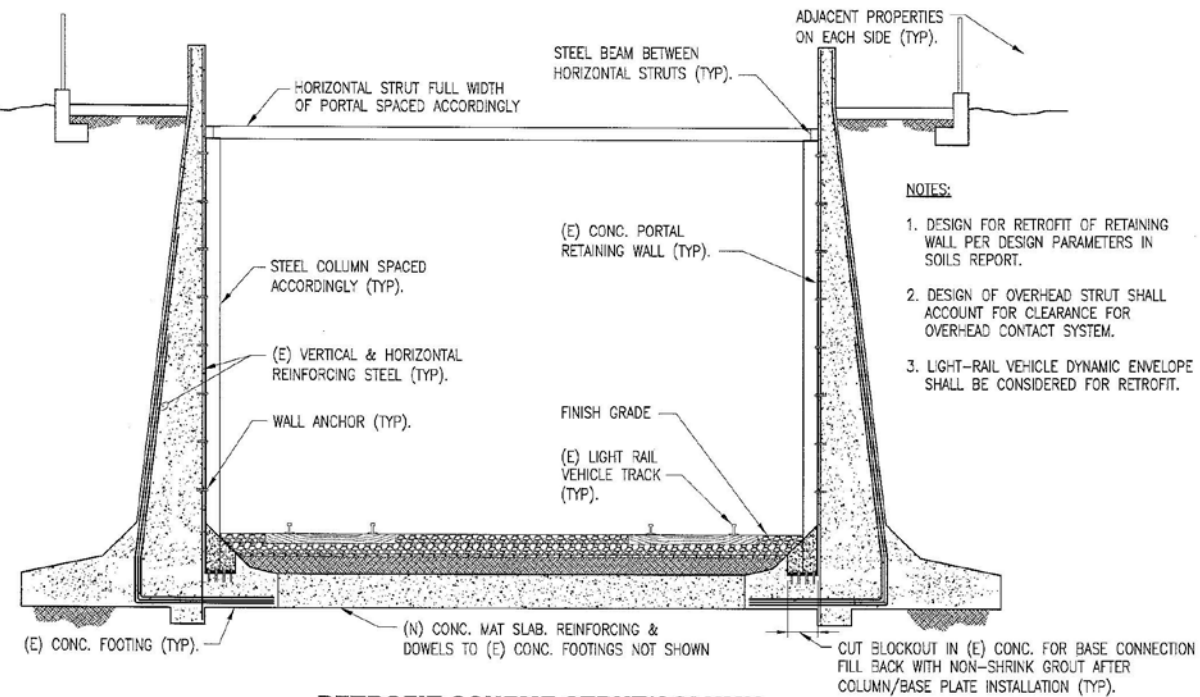
Highlights of Project Scope

- Rail replacement
- Overhead Contact System replacement
- Seismic improvements in the Sunset tunnel
- Fire safety system upgrades
- Signal upgrades at nine intersections along the N Judah Metro Line

Existing Conditions

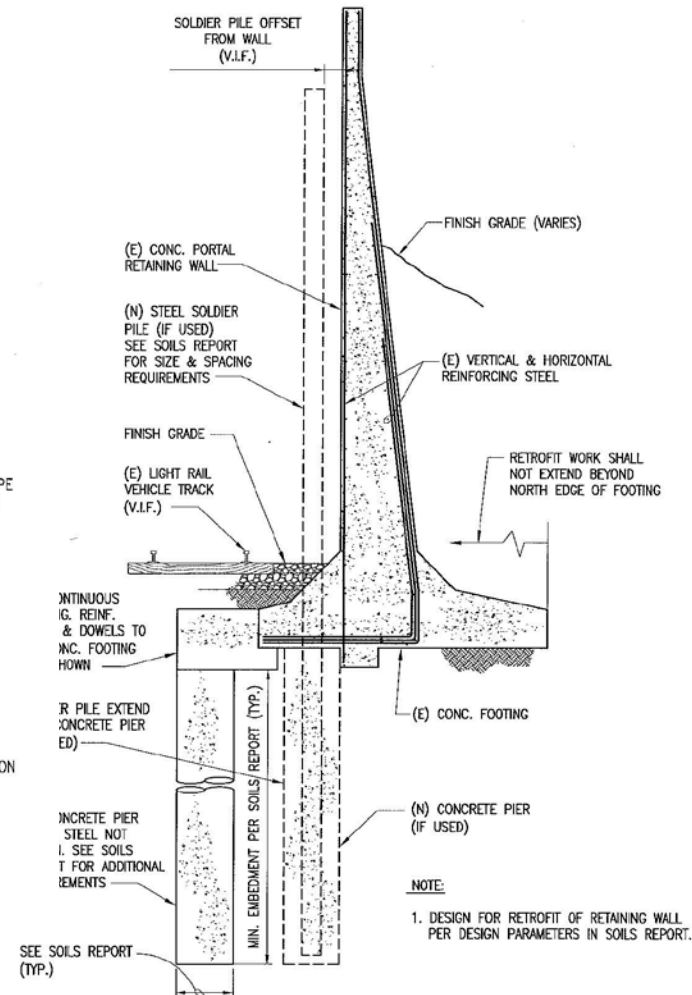


Seismic Upgrades to Portal Walls



**RETROFIT SCHEME-STRUT/COLUMN
 & MAT SLAB OPTION @ WEST PORTAL**

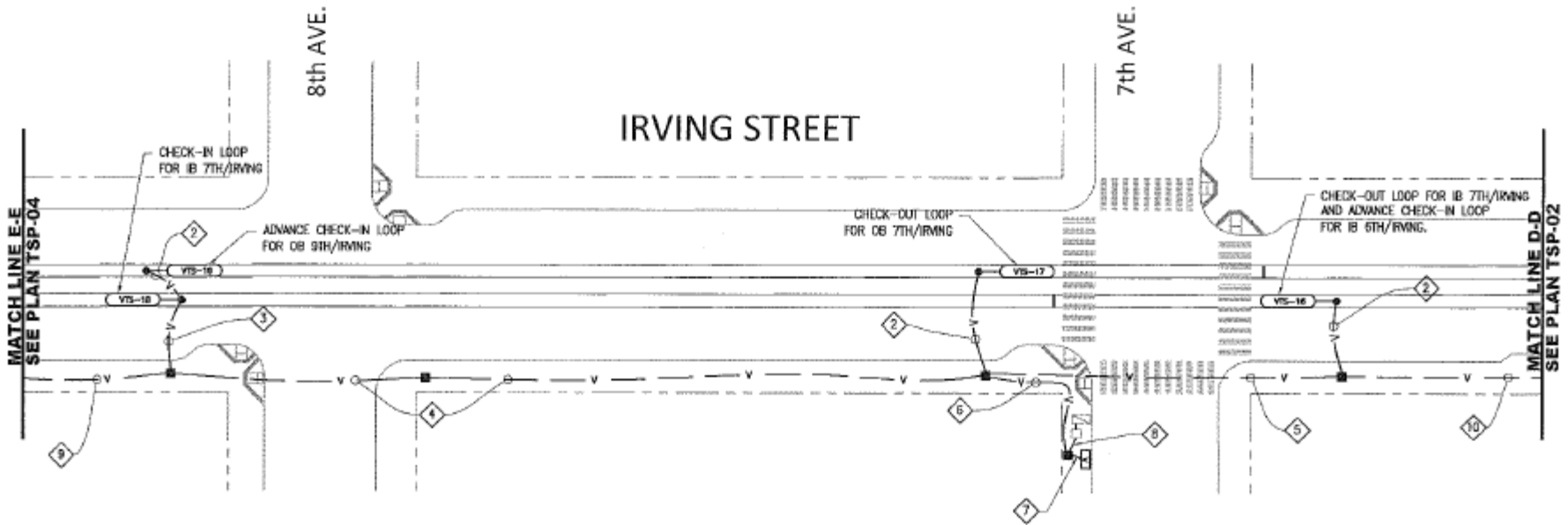
N. T. S.



**RETROFIT SCHEME-FOOTING/PIER & SOLDIER
 PILE OPTION @ NORTH WALL OF EAST PORTAL**

N. T. S.

Signal System Upgrades at Nine Intersections



- Carl/Stanyan
- 4th/Irving
- 6th/Irving
- 7th/Irving
- 9th/Irving
- 9th/Judah
- 18th/Judah
- 19th/Judah
- Sunset/Judah

Project Schedule

- Complete Advertisement, Bid & Award:
January 2014
- Notice to Proceed: February 2014
- Start Construction: April/May 2014
(estimated)

Project Impacts

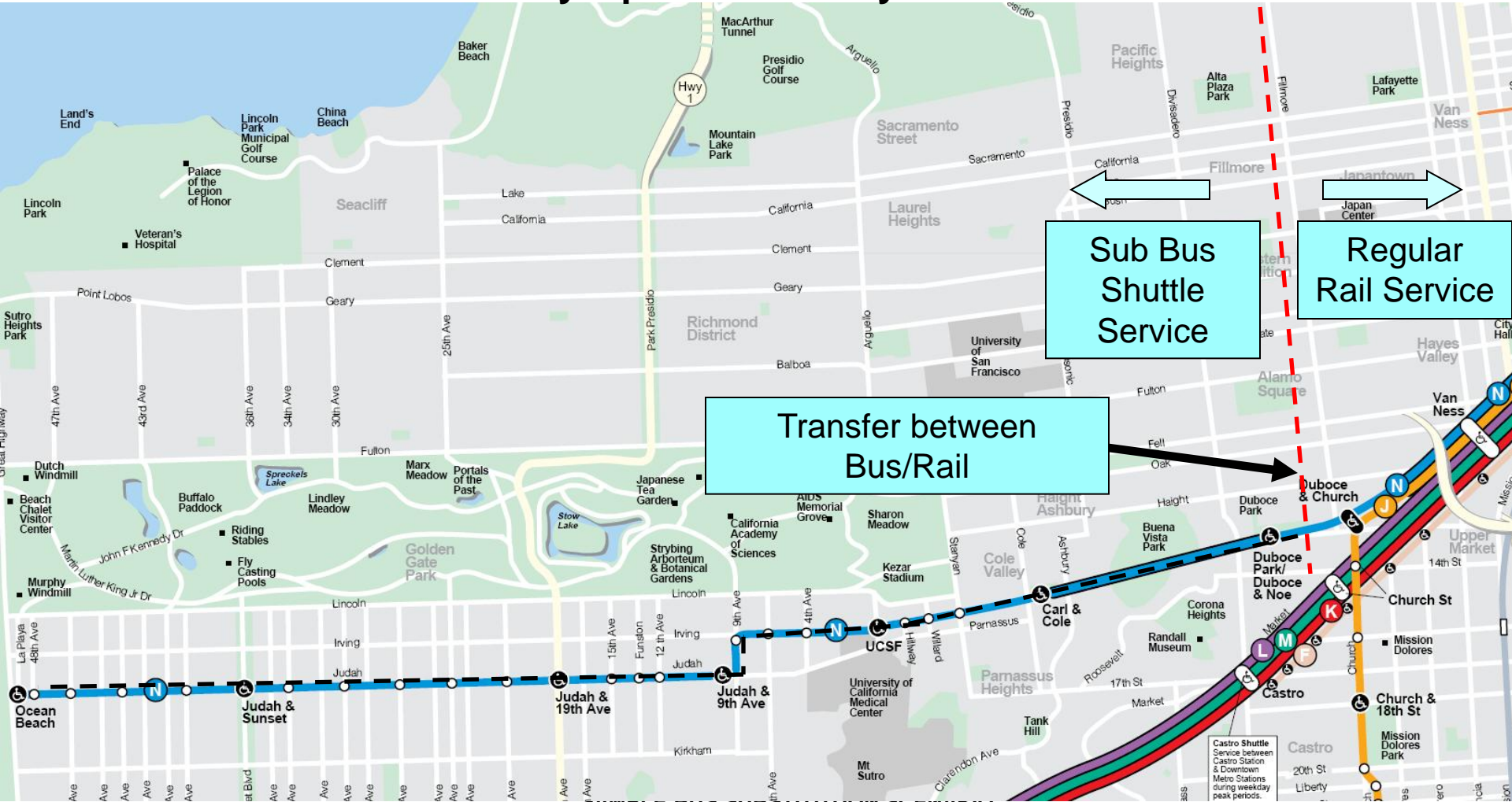
- Bus Substitution for 15 weekends during N-Line shutdown
- Construction Equipment and Staging
- Noise and Disruption from construction activities
- Temporary parking removal around the tunnel and at transit signal work locations

What to Expect: Transit

- Rail service affected:
 - Temporary partial rail service shutdowns
 - Multiple partial weekend shutdowns on portions of the N Line
 - Beginning spring 2014 through fall 2015
- Increased transit travel times
- N Line bus shuttle substitution
- Rail to bus transfers for some N Line destinations

N Line Service Adjustments: A Sample Scenario

Friday 7 p.m. to Monday 4 a.m.



SAMPLE BUS SUBSTITUTION SCENARIO

Measures to Minimize Inconveniences

- Traffic control officers on-site
- Signage to direct customers to transfer points
- Businesses remain open during construction
- SFMTA Ambassadors
- Proactive notification

Coordinated, Multilingual Customer Information Campaign

- Community Outreach
- Printed materials
- Dedicated web page
- Electronic messaging
- Signs and banners
- Newspaper advertisements
- SFMTA Ambassadors

Customer Information & Project Updates

www.sfmta.com/sunsettunnel

 311: 中文 / Español / Français / 日本語 / 한국어 / Italiano / русский / tiếng Việt / Tagalog / عربي

Thank You for Your Participation

Tess Kavanagh, Project Manager

415.701.4212

Tess.kavanagh@sfmta.com

Jay Lu, Public Relations Officer

415.701.4387

Jay.lu@sfmta.com